

15 August 2021 Daily Report on COVID-19

(1) Number of COVID-19 Cases

Figure 1.1: Breakdown of New Confirmed Cases in the Past 14 Days

Press Release Date	Imported			Non-Imported Cases														All Cases
				Community Cases								Dorm Residents ¹						
	Isolated before Detection	Detected through Surveillance ²	Sub-Total	Isolated before Detection ³				Detected through Surveillance ⁴				Sub-Total	Incidence Rate ⁵ (per 100,000)	Isolated before Detection ³	Detected through Surveillance ⁴	No. of Cases	Incidence Rate ⁵ (per 100,000)	
				SC/PR	G or F	Visitor	Sub-Total	SC/PR	G or F	Visitor	Sub-Total							
Before 2-Aug	4,697	333	5,030	1,477	708	21	2,206	2,202	1,064	44	3,310	5,516	-	54,556		54,556	-	65,102
2-Aug	5	0	5	51	11	0	62	32	8	0	40	102	1.9	3	1	4	1.2	111
3-Aug	4	0	4	35	10	0	45	31	16	0	47	92	1.7	1	5	6	1.9	102
4-Aug	3	0	3	43	6	0	49	23	12	2	37	86	1.6	5	1	6	1.9	95
5-Aug	2	0	2	25	12	0	37	41	12	1	54	91	1.7	1	4	5	1.5	98
6-Aug	4	0	4	29	14	0	43	20	11	1	32	75	1.4	13	5	18	5.6	97
7-Aug	6	0	6	26	9	0	35	13	8	0	21	56	1	15	4	19	5.9	81
8-Aug	5	0	5	30	9	0	39	25	5	0	30	69	1.3	4	0	4	1.2	78
9-Aug	3	0	3	25	8	1	34	21	2	0	23	57	1.1	5	7	12	3.7	72
10-Aug	1	0	1	21	5	0	26	18	3	0	21	47	0.87	5	1	6	1.9	54
11-Aug	2	0	2	23	2	0	25	22	6	0	28	53	0.98	8	0	8	2.5	63
12-Aug	0	0	0	17	5	0	22	26	7	0	33	55	1	4	0	4	1.2	59
13-Aug	4	0	4	16	2	0	18	13	12	0	25	43	0.8	2	0	2	0.62	49
14-Aug	1	0	1	20	6	0	26	21	6	0	27	53	0.98	3	1	4	1.2	58
15-Aug	3	0	3	20	9	0	29	14	3	0	17	46	0.85	1	3	4	1.2	53
Total since start of outbreak	4,740	333	5,073	1,858	816	22	2,696	2,522	1,175	48	3,745	6,441	-	54,658		54,658	-	66,172
Population at risk												5,381,000				323,000		5,704,000
Prevalence												0.12%				16.92%		1.16%

Notes
¹ Includes PRs and visitors residing in dorms. Breakdown of dorm cases into those detected through surveillance and those isolated before detection is not available before 24 Aug.
² 272 cases were reported before early Apr, and constitute the 1st wave of imported cases.
³ Cases who were already quarantined and tested during quarantine to determine their status.
⁴ Cases who were identified through surveillance testing, such as the bi-weekly Rostered Routine Testing (RRT) of at-risk workers and testing of those with Acute Respiratory Illness (ARI) symptoms.
⁵ Incidence rates are rounded to two significant figures.

Figure 1.2: Epidemic Curve of the COVID-19 Outbreak by Press Release Date

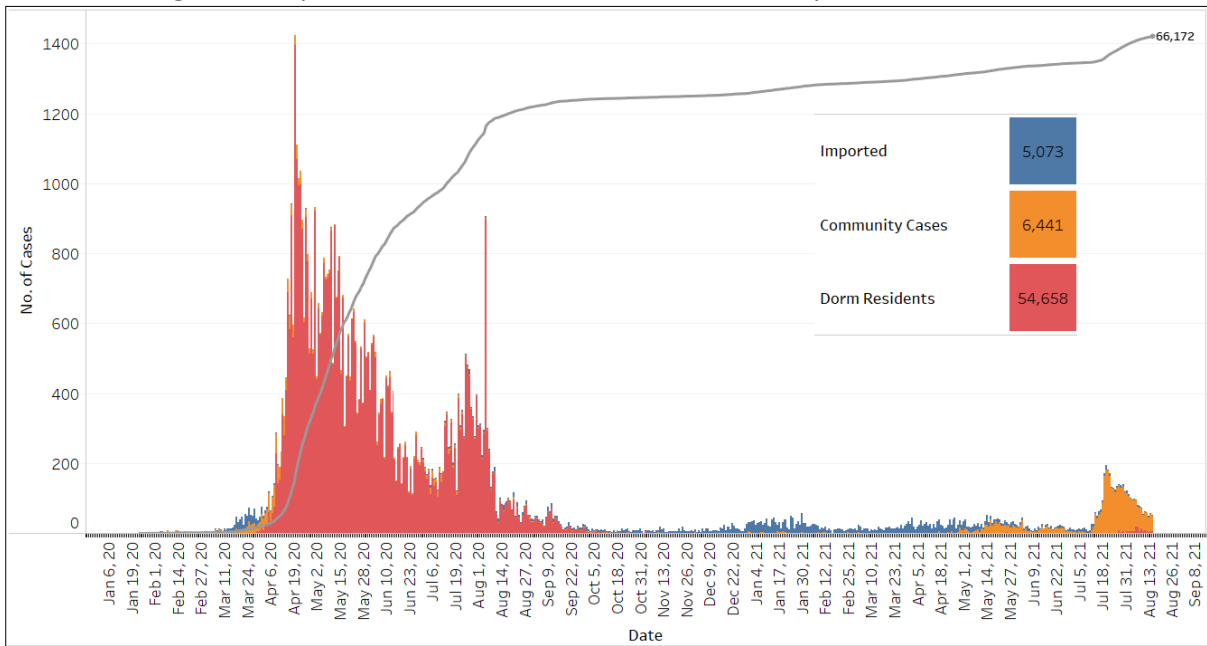


Figure 1.3: Epidemic Split Curve of the COVID-19 Outbreak by Press Release Date

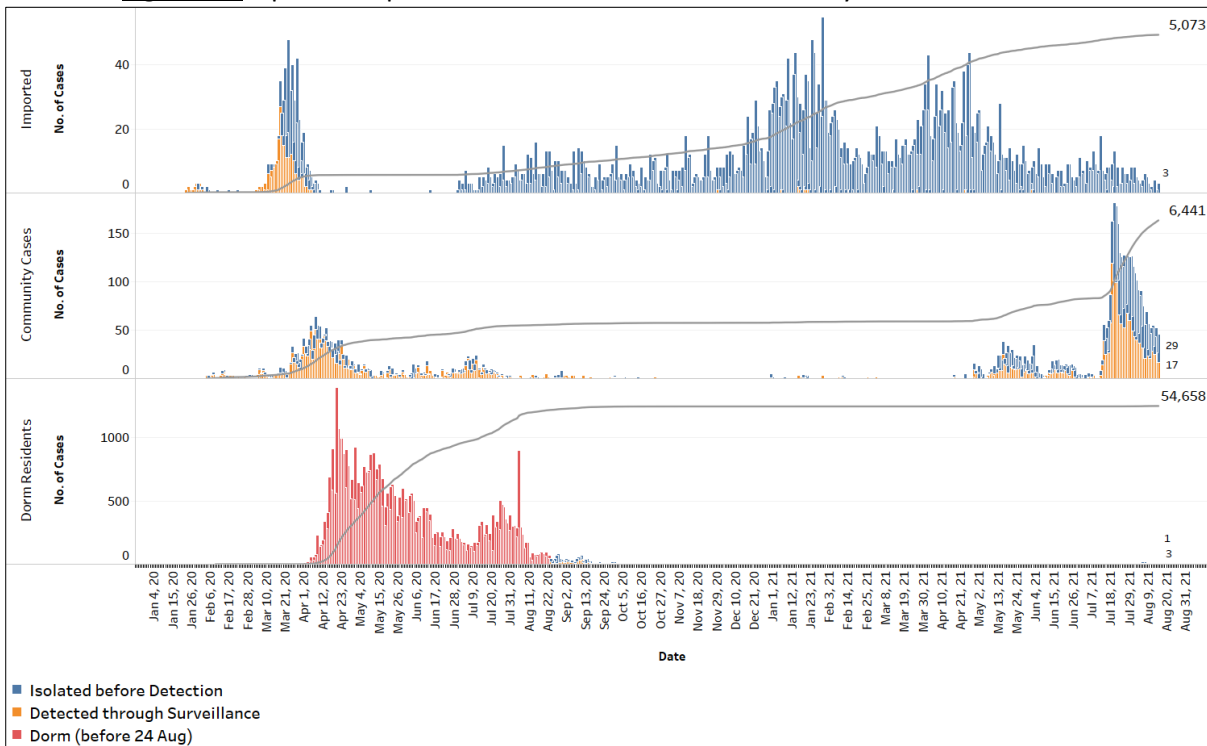


Figure 1.4: Epidemic Curve of COVID-19 Re-infections by Press Release Date

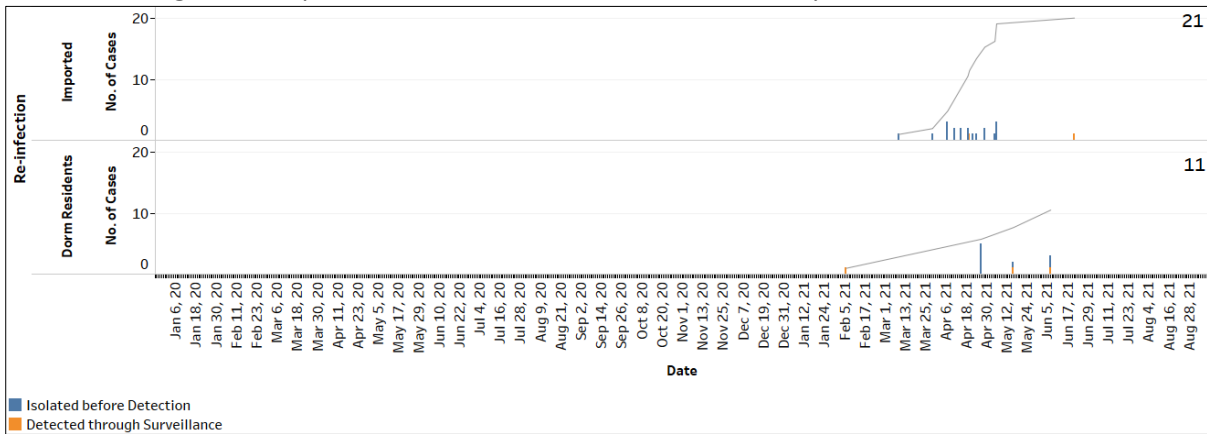


Figure 1.5: Epidemic Curve of Imported Cases by Press Release Date (left panel) and Arrival Date (right panel)

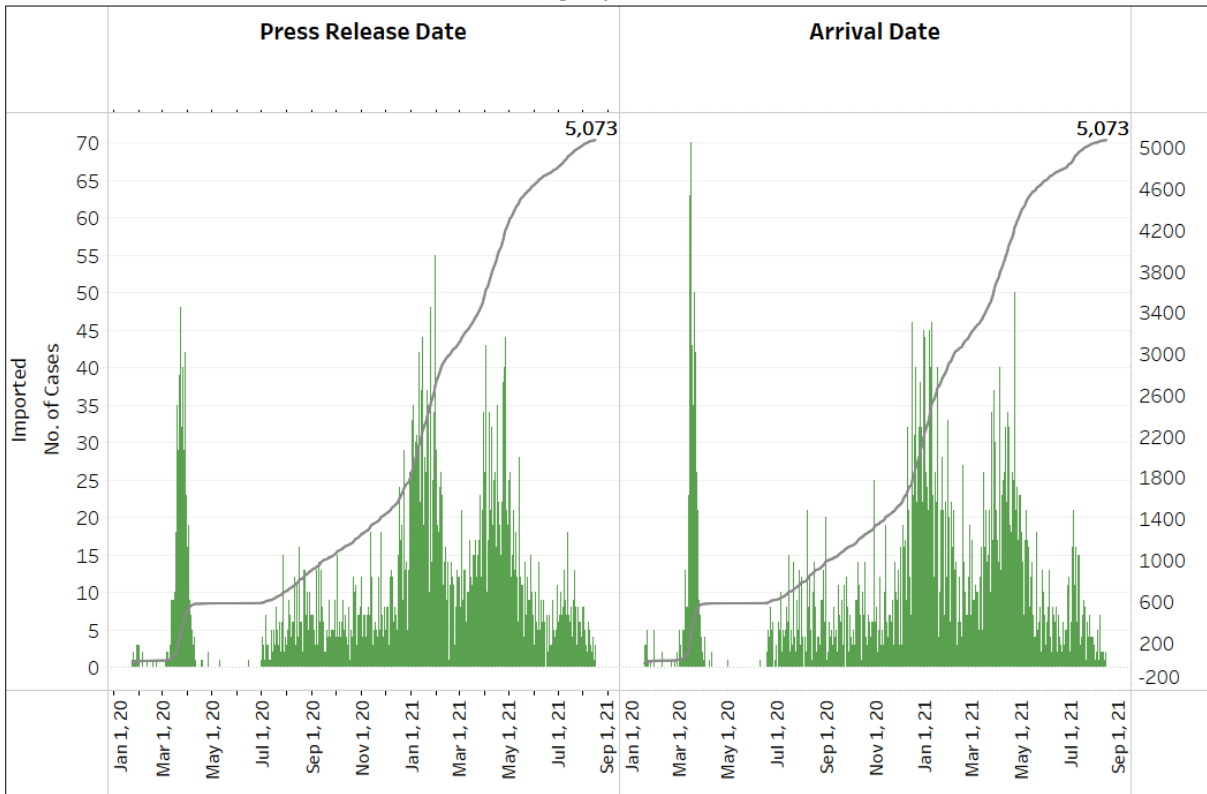


Figure 1.6: Epidemic Curve of Community Cases by Press Release Date (left panel) and by Symptom Onset or Notification Date⁶ (right panel)

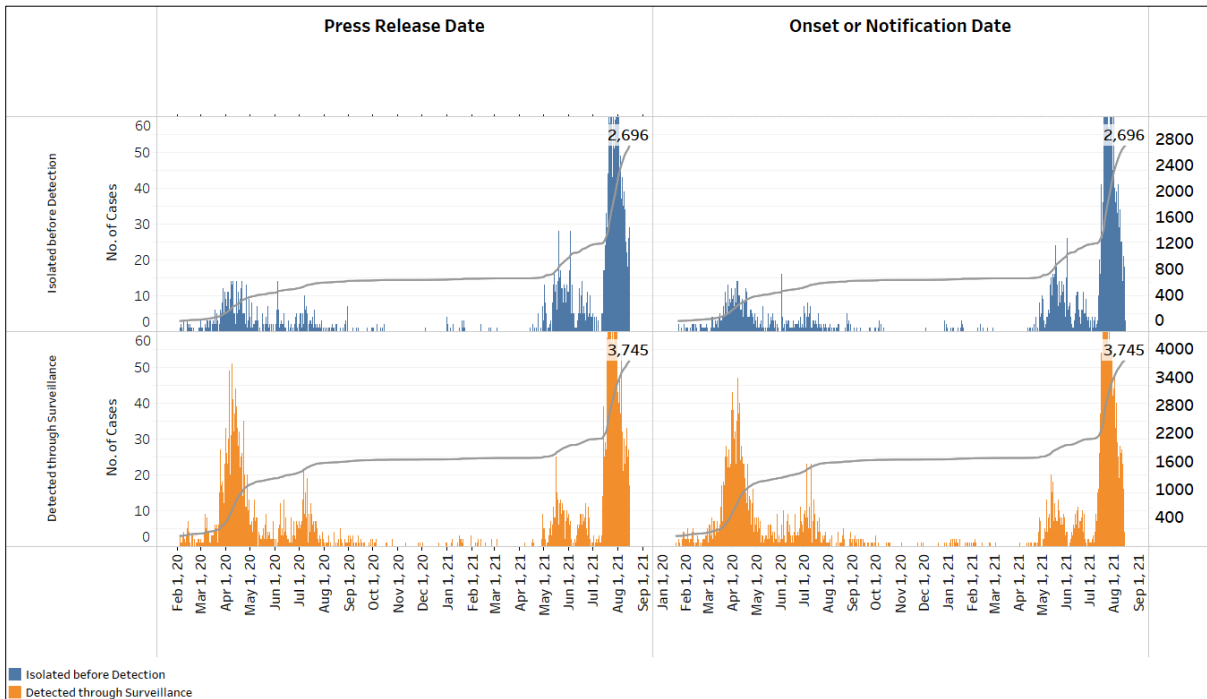
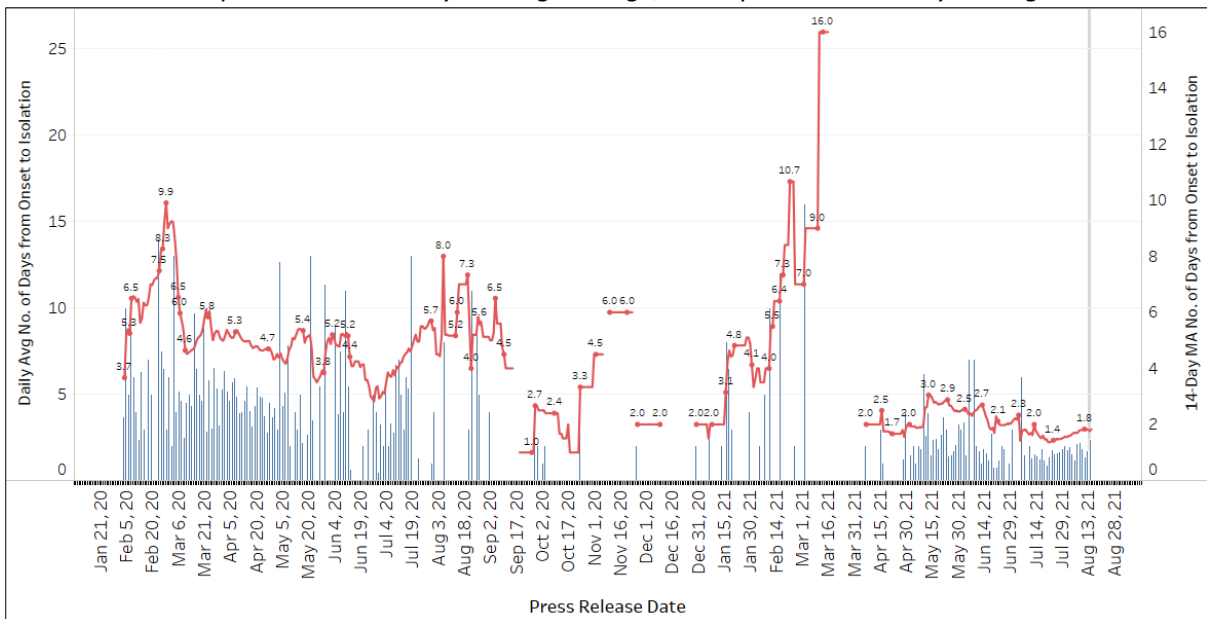


Figure 1.7: Average Number of Days from Onset of Symptoms to Isolation (QO, hospital admission or notification to MOH) for Community Cases Detected through Surveillance in Each Day. Line represents the 14-day moving average; Bar represents the daily average⁷



⁶ Date of notification was used for cases that did not display any symptoms. The numbers with onset in the past few days may see an increase as more cases are notified.

⁷ Area in grey demarcates data points for the past 3 days where some cases may still be pending epidemiological investigation. The bar graph shows the daily average number of days from symptoms onset to isolation, while the line graph shows the moving average for the past 14 days. Both graphs exclude cases with no onset date (asymptomatic) in the computation of the average. Community cases with symptoms who are isolated on the same day that symptoms occurred would have an isolation time of 0. There is a gap in the line graph from 16 to 18 Sep as there are no symptomatic cases in the preceding 14 days.

Figure 1.8: Weekly Reclassifications of Previously Reported Cases (next update will be on 16 Aug)

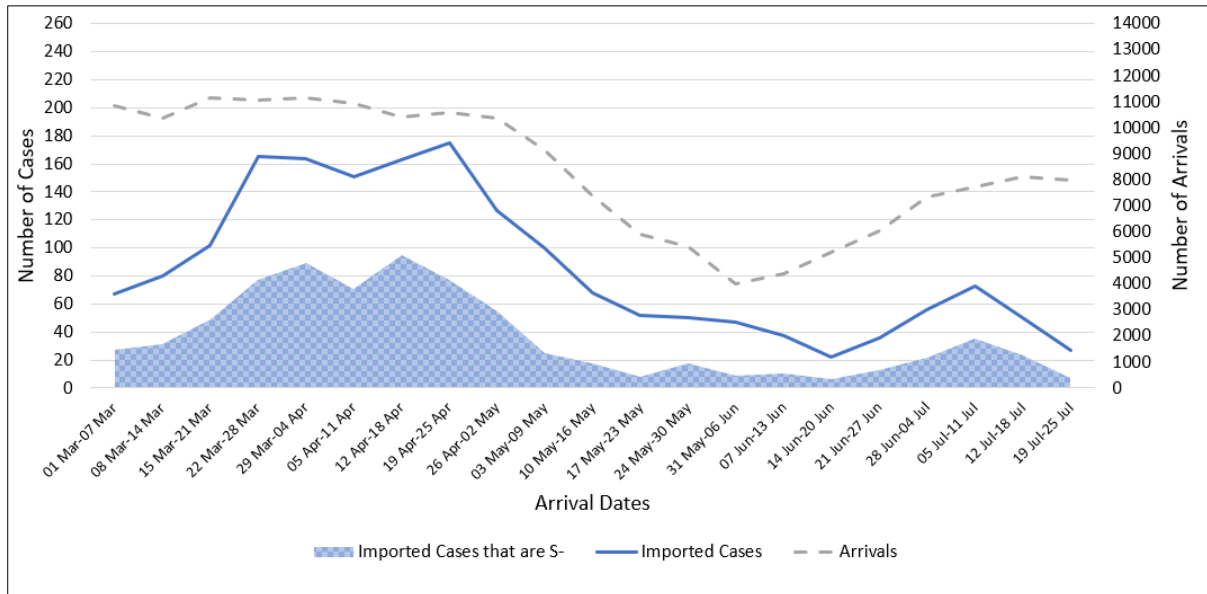
	Imported	Community Linked	Community Unlinked	Dorm Residents	Total
Total number of cases as at 02 Aug	5,035	4,266	1,352	54,560	65,213
Cases reported 03 Aug - 09 Aug	27	352	174	70	623
Net reclassifications of previously reported cases, incorporated 03 Aug - 09 Aug	0	49	-49	0	0
Total number of cases as at 09 Aug	5,062	4,667	1,477	54,630	65,836

(2) Imported COVID 19 Cases

Figure 2.1: Serology and Symptom Status of Imported Cases Reported from 02 Aug to 08 Aug

Symptoms	S+	S-	Not Serology Tested	Pending Serology Result	Total No. of Cases
Asymptomatic	15	2	0	1	18
Symptomatic	6	3	0	2	11
Total	21	5	0	3	29

Figure 2.2: Weekly Total Number of Imported Cases, Imported Cases that are S- and Arrivals from 1 Mar 21 to 25 Jul 21⁸ (next update will be on 16 Aug)



⁸ Data from the past 2 weeks are excluded as cases on SHN who arrived in the past 2 weeks may not have their test results yet. "Imported Cases that are S-" comprises imported cases who are (a) serology negative; or (b) not tested for serology.

(3) Number of COVID 19 Cases in Hospitals and Community Care Facilities**Figure 3.1:** Summary of Confirmed Cases by Status in the Past 14 Days

Press Release Date	Currently Admitted in Hospitals		In Care Facilities ⁹	Total Recovered		Total Demised	Total
	ICU	General Wards		Completed Isolation	Discharged from Hospital		
2-Aug	7	595	1,540	59,226	3,807	38	65,213
3-Aug	7	585	1,433	59,420	3,832	38	65,315
4-Aug	7	548	1,459	59,507	3,850	39	65,410
5-Aug	8	569	1,434	59,592	3,865	40	65,508
6-Aug	7	539	1,482	59,654	3,882	41	65,605
7-Aug	4	525	1,457	59,752	3,906	42	65,686
8-Aug	8	534	1,322	59,937	3,921	42	65,764
9-Aug	10	517	1,205	60,112	3,950	42	65,836
10-Aug	11	497	1,188	60,179	3,973	42	65,890
11-Aug	8	500	1,109	60,304	3,989	43	65,953
12-Aug	9	461	1,119	60,365	4,015	43	66,012
13-Aug	10	478	992	60,505	4,032	44	66,061
14-Aug	9	442	955	60,603	4,066	44	66,119
15-Aug	8	435	893	60,700	4,092	44	66,172

⁹ Community Care Facilities (i.e. D'Resort, Tuas South, AMK ITE, Village Hotel Sentosa, CSC Loyang), Community Hospitals (i.e. Bright Vision Hospital) and other care facilities.

(4) Number of Stay Home Notice (SHN) Issued

Figure 4.1: Daily Number of SHN issued (19 Feb 2020 to 14 Aug 2021)

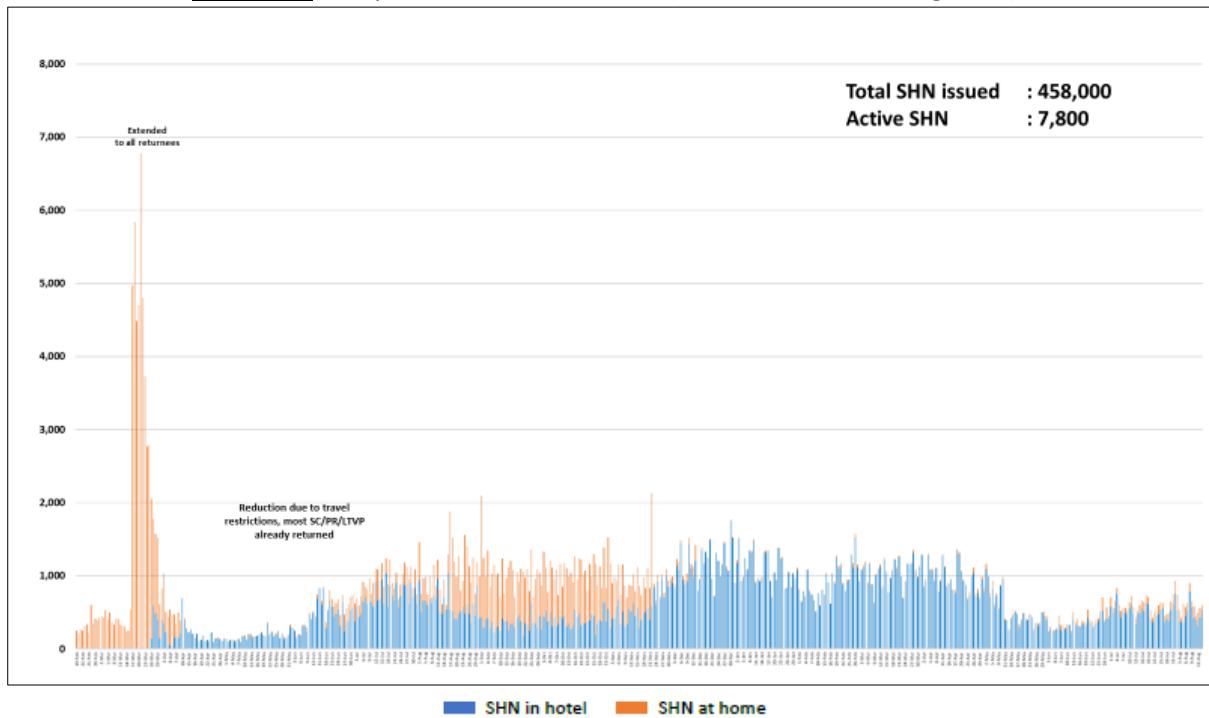
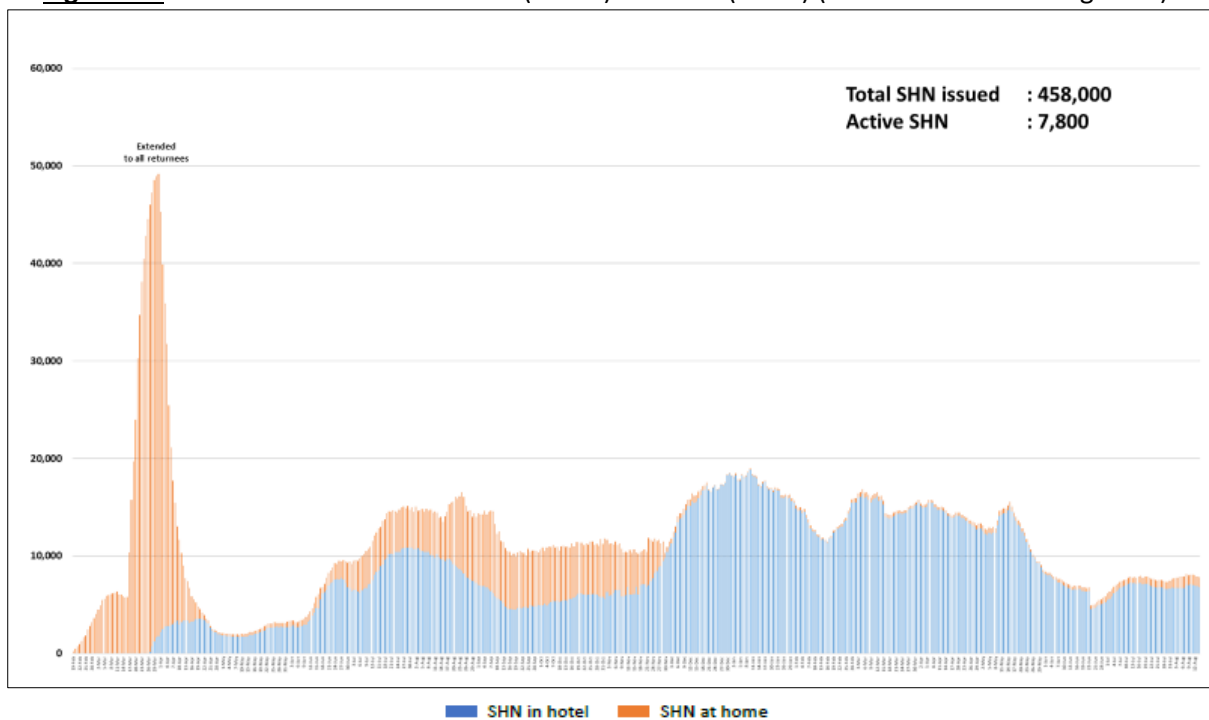


Figure 4.2: Active Stock Number of SHN (Home) and SHN (Hotel) (19 Feb 2020 to 14 Aug 2021)



(5) Number of Quarantine Orders (QO) Generated

Figure 5.1: Daily Number of QOs Generated

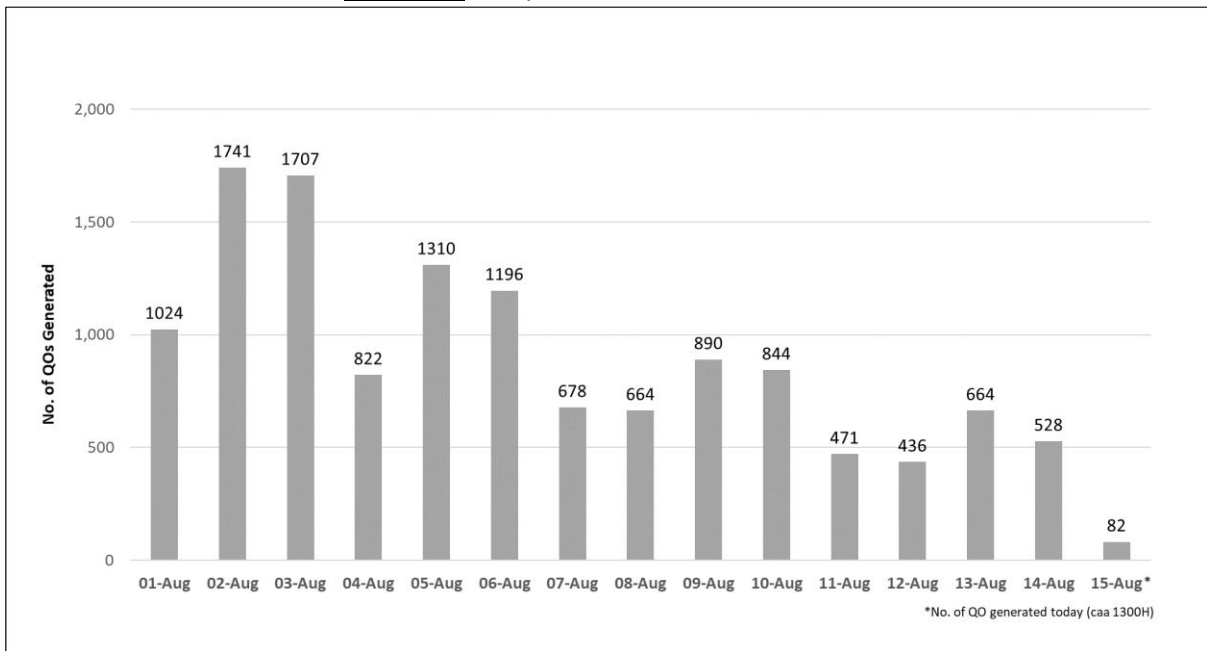


Figure 5.2: Active Number of Persons Under Quarantine (PUQs)

