

20 August 2021 Daily Report on COVID-19

(1) Local COVID-19 Cases

Figure 1.1: Summary Statistics for the Past 3 Weeks

| | Number of local cases | | | Percentage of local cases | | |
|---|----------------------------------|-------------------------------|------------------------------|----------------------------------|-------------------------------|------------------------------|
| | 2 weeks before (31 Jul-6 Aug) | Week before (7 Aug-13 Aug) | Past week (14 Aug-20 Aug) | 2 weeks before (31 Jul-6 Aug) | Week before (7 Aug-13 Aug) | Past week (14 Aug-20 Aug) |
| Linked and Already Quarantined | 396 | 242 | 179 | 55% | 56% | 56% |
| Linked and Detected through Surveillance | 130 | 91 | 56 | 18% | 21% | 17% |
| Unlinked | 189 | 102 | 86 | 26% | 23% | 27% |
| | | | | | | |
| Total Local Cases | 715 | 435 | 321 | 100% | 100% | 100% |
| Local Linked | 526 | 333 | 235 | 74% | 77% | 73% |
| Local Unlinked | 189 | 102 | 86 | 26% | 23% | 27% |
| | | | | | | |
| Household Transmission Cases (as a percentage of local linked cases) | 347 | 244 | 158 | 66% | 73% | 67% |

Figure 1.2: Number of Local Cases by Already Quarantined/ Detected from Surveillance¹
(24 Jul – 20 Aug)

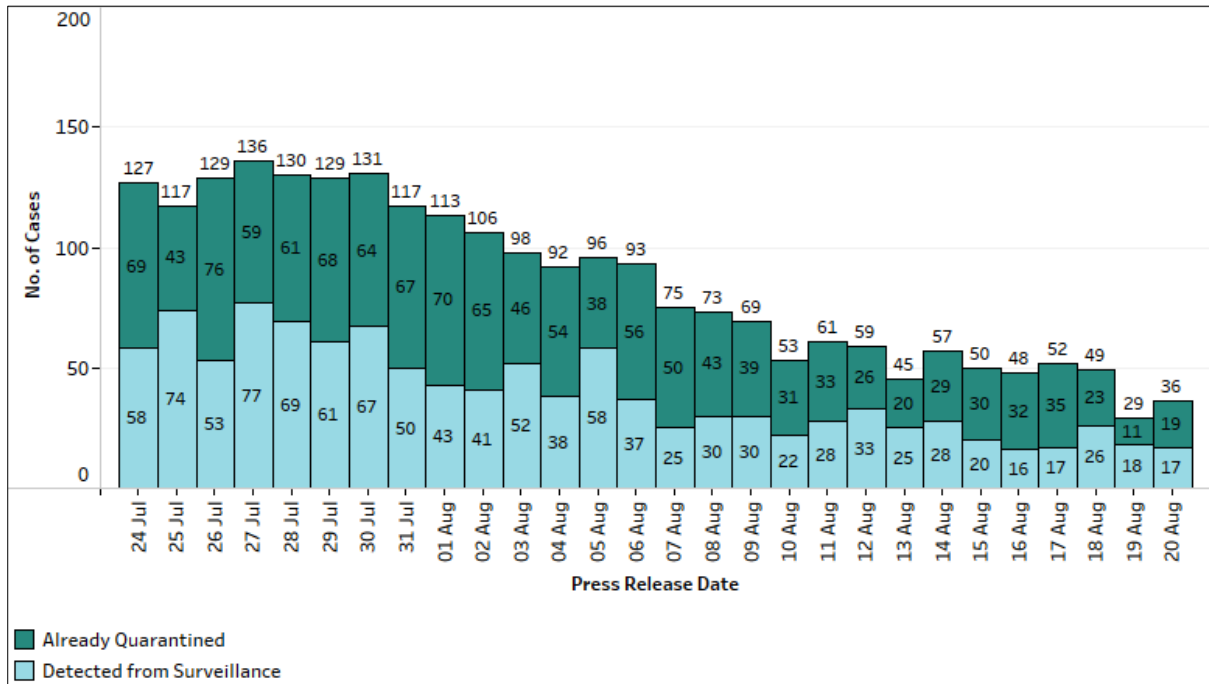
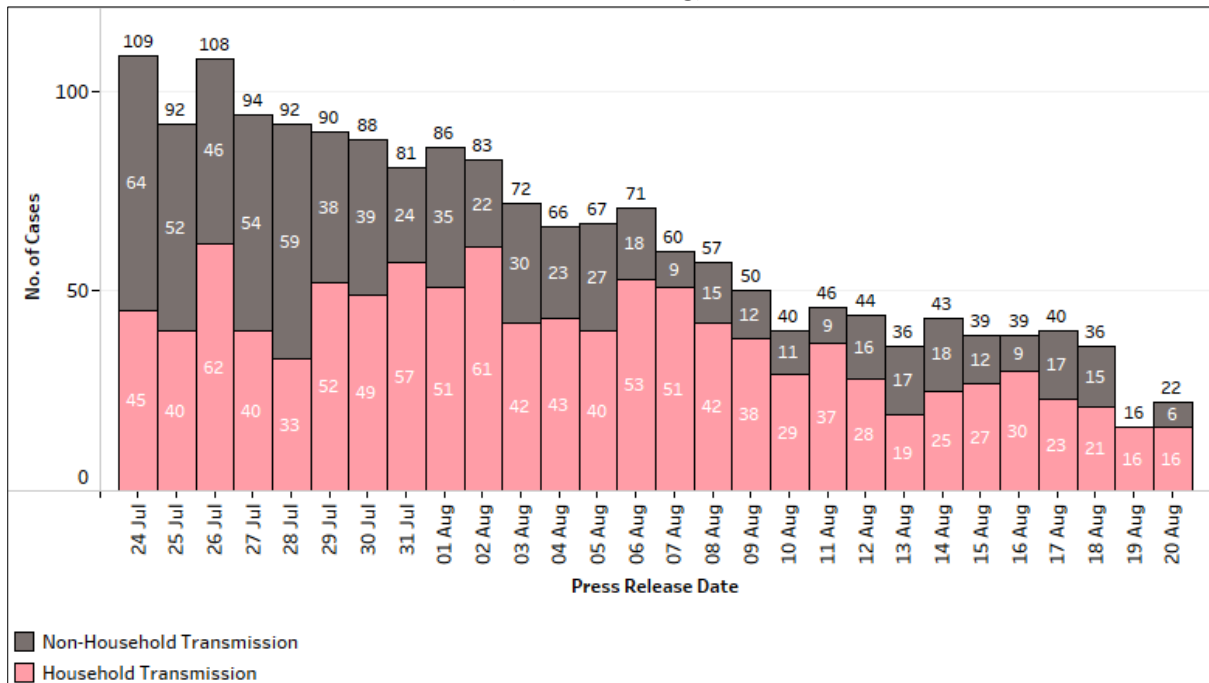


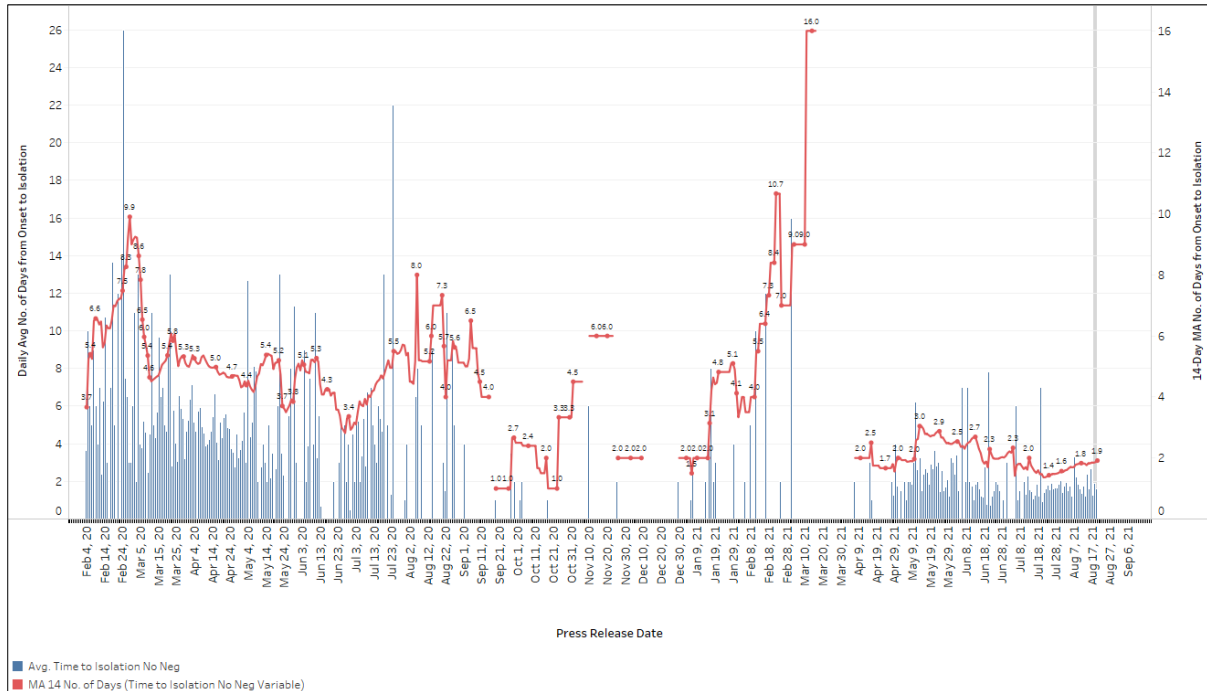
Figure 1.3: Number of Local Linked Cases by Household/ Non-Household Transmission¹
(24 Jul – 20 Aug)



¹ Incorporates re-classifications of earlier reported cases.

(2) Community COVID-19 Cases

Figure 2.1: Average Number of Days from Onset of Symptoms to Isolation (QO, hospital admission or notification to MOH) for Community Cases Detected through Surveillance in Each Day
Line represents the 14-day moving average; Bar represents the daily average²



(3) Imported COVID-19 Cases

Figure 3.1: Serology and Symptom Status of Imported Cases Reported from 7 Aug to 13 Aug

| Symptoms | S+ | S- | Not Serology Tested | Pending Serology Result | Total No. of Cases |
|--------------|-----------|----------|---------------------|-------------------------|--------------------|
| Asymptomatic | 10 | 4 | 0 | 1 | 15 |
| Symptomatic | 4 | 2 | 0 | 0 | 6 |
| Total | 14 | 6 | 0 | 1 | 21 |

² Area in grey demarcates data points for the past 3 days where some cases may still be pending epidemiological investigation. The bar graph shows the daily average number of days from symptoms onset to isolation, while the line graph shows the moving average for the past 14 days. Both graphs exclude cases with no onset date (asymptomatic) in the computation of the average. Community cases with symptoms who are isolated on the same day that symptoms occurred would have an isolation time of 0. There is a gap in the line graph from 16 to 18 Sep as there are no symptomatic cases in the preceding 14 days.

(4) Number of COVID-19 Cases in Hospitals and Community Care Facilities**Figure 4.1:** Summary of Confirmed Cases by Status in the Past 14 Days

| Press Release Date | Currently Admitted in Hospitals | | In Care Facilities ³ | Total Recovered | | Total Demised | Total |
|--------------------|---------------------------------|---------------|---------------------------------|---------------------|--------------------------|---------------|--------|
| | ICU | General Wards | | Completed Isolation | Discharged from Hospital | | |
| 7-Aug | 4 | 525 | 1,457 | 59,752 | 3,906 | 42 | 65,686 |
| 8-Aug | 8 | 534 | 1,322 | 59,937 | 3,921 | 42 | 65,764 |
| 9-Aug | 10 | 517 | 1,205 | 60,112 | 3,950 | 42 | 65,836 |
| 10-Aug | 11 | 497 | 1,188 | 60,179 | 3,973 | 42 | 65,890 |
| 11-Aug | 8 | 500 | 1,109 | 60,304 | 3,989 | 43 | 65,953 |
| 12-Aug | 9 | 461 | 1,119 | 60,365 | 4,015 | 43 | 66,012 |
| 13-Aug | 10 | 478 | 992 | 60,505 | 4,032 | 44 | 66,061 |
| 14-Aug | 9 | 442 | 955 | 60,603 | 4,066 | 44 | 66,119 |
| 15-Aug | 8 | 435 | 893 | 60,700 | 4,092 | 44 | 66,172 |
| 16-Aug | 7 | 419 | 853 | 60,789 | 4,113 | 44 | 66,225 |
| 17-Aug | 6 | 398 | 770 | 60,924 | 4,138 | 45 | 66,281 |
| 18-Aug | 6 | 396 | 734 | 60,997 | 4,155 | 46 | 66,334 |
| 19-Aug | 8 | 383 | 687 | 61,058 | 4,184 | 46 | 66,366 |
| 20-Aug | 7 | 373 | 577 | 61,198 | 4,204 | 47 | 66,406 |

³ Community Care Facilities (i.e. D'Resort, Tuas South, AMK ITE, Village Hotel Sentosa, CSC Loyang), Community Hospitals (i.e. Bright Vision Hospital) and other care facilities.