

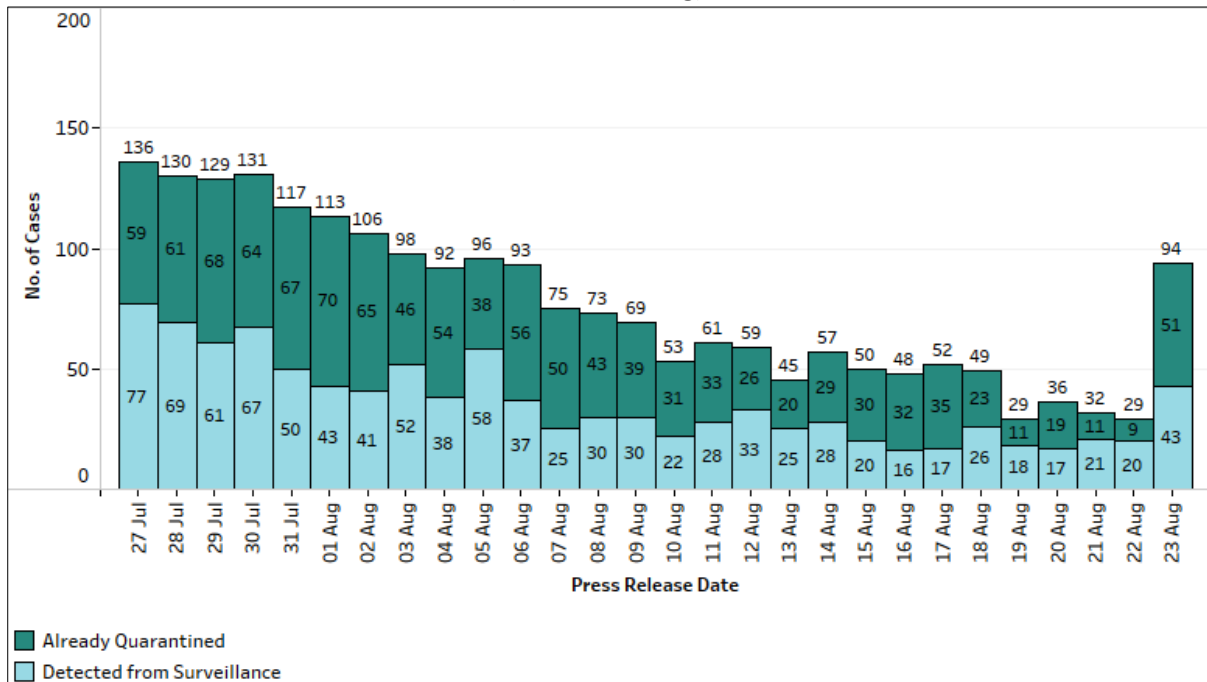
**23 August 2021 Daily Report on COVID-19**

**(1) Local COVID-19 Cases**

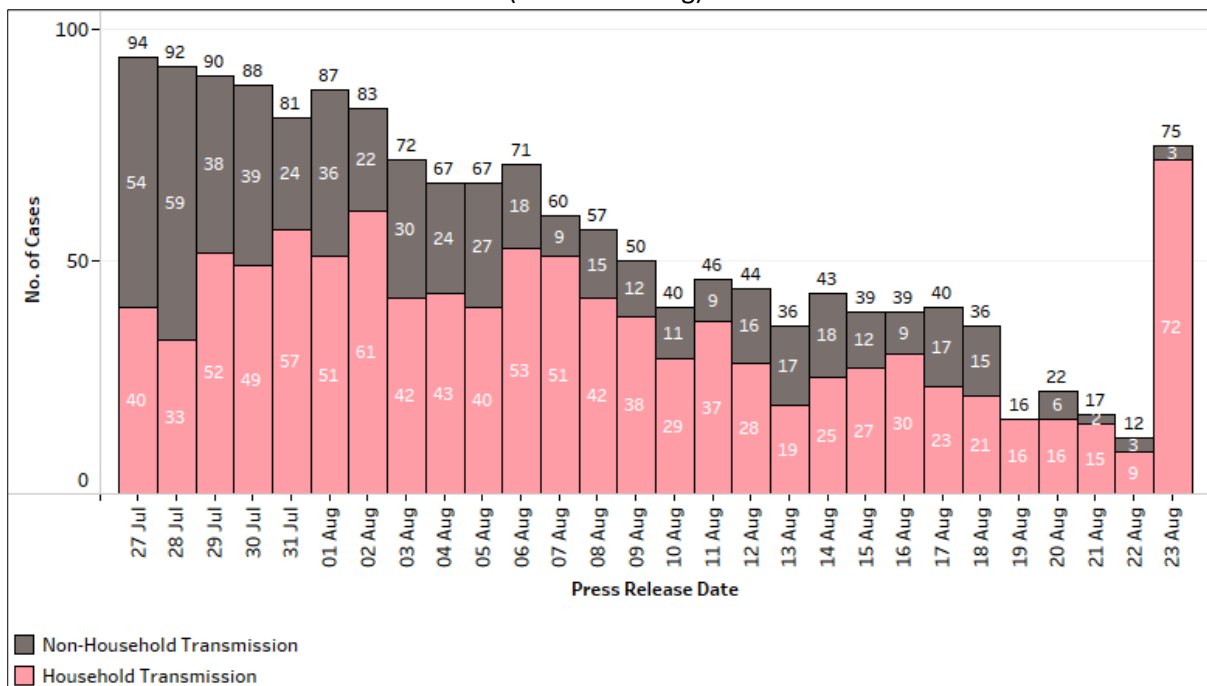
**Figure 1.1:** Summary Statistics for the Past 3 Weeks

	Number of local cases			Percentage of local cases		
	2 weeks before (3 Aug-9 Aug)	Week before (10 Aug-16 Aug)	Past week (17 Aug-23 Aug)	2 weeks before (3 Aug-9 Aug)	Week before (10 Aug-16 Aug)	Past week (17 Aug-23 Aug)
Linked and Already Quarantined	326	201	159	55%	54%	50%
Linked and Detected through Surveillance	118	86	59	20%	23%	18%
Unlinked	152	86	103	26%	23%	32%
Total Community Cases	596	373	321	100%	100%	100%
Community Linked	444	287	218	74%	77%	68%
Community Unlinked	152	86	103	26%	23%	32%
Household Transmission cases (as a percentage of community linked cases)	309	195	173	70%	68%	79%

**Figure 1.2:** Number of Local Cases by Already Quarantined/ Detected from Surveillance<sup>6</sup>  
(27 Jul – 23 Aug)



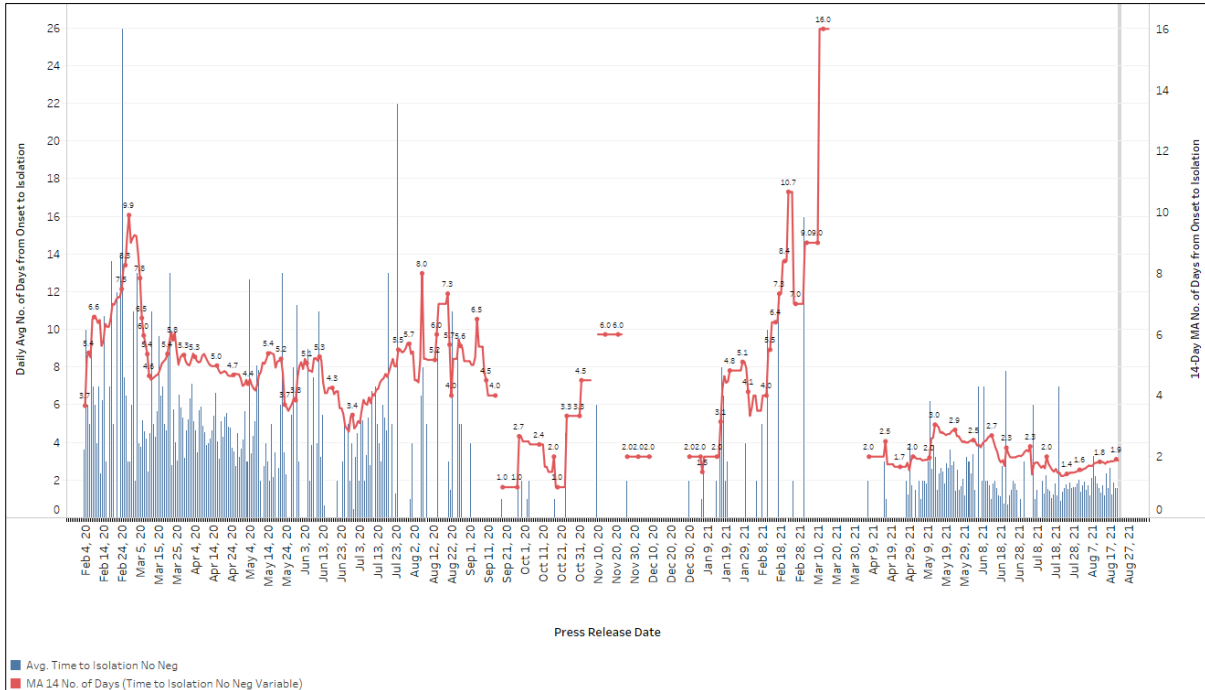
**Figure 1.3:** Number of Local Linked Cases by Household/ Non-Household Transmission<sup>6</sup>  
(27 Jul – 23 Aug)



<sup>6</sup> Incorporates re-classifications of earlier reported cases.

## (2) Community COVID-19 Cases

**Figure 2.1:** Average Number of Days from Onset of Symptoms to Isolation (QO, hospital admission or notification to MOH) for Community Cases Detected through Surveillance in Each Day  
Line represents the 14-day moving average; Bar represents the daily average<sup>2</sup>



## (3) Imported COVID-19 Cases

**Figure 3.1:** Serology and Symptom Status of Imported Cases Reported from 10 Aug to 16 Aug

Symptoms	S+	S-	Not Serology Tested	Pending Serology Result	Total No. of Cases
Asymptomatic	8	5	0	1	14
Symptomatic	1	1	0	0	2
<b>Total</b>	<b>9</b>	<b>6</b>	<b>0</b>	<b>1</b>	<b>16</b>

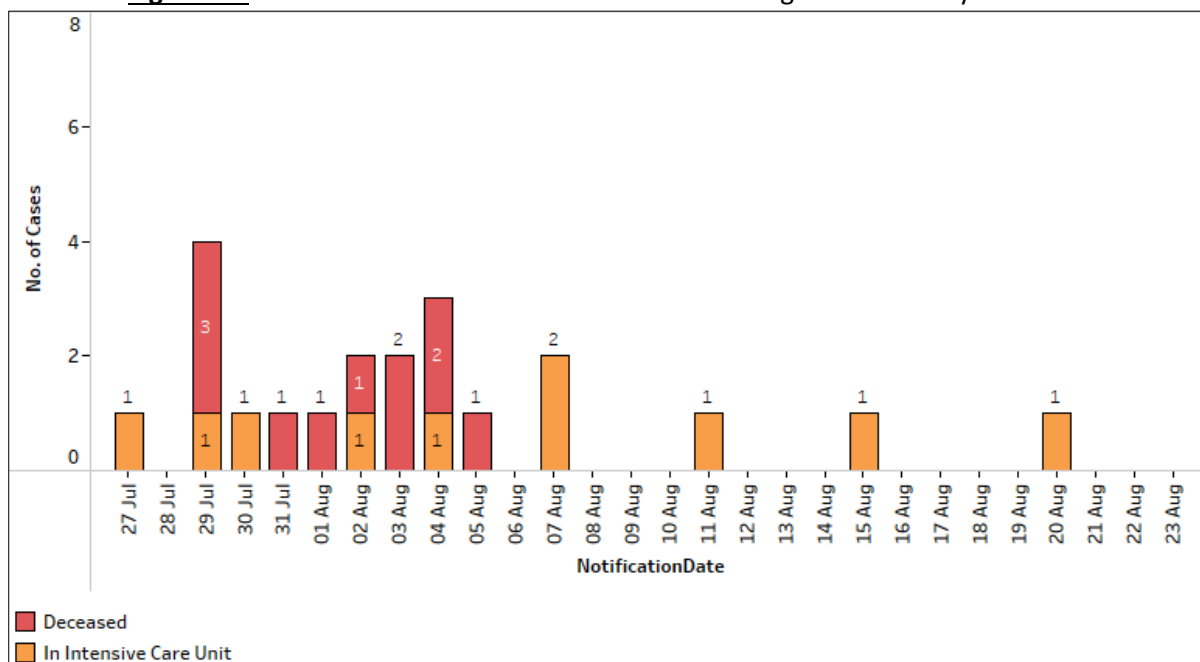
<sup>2</sup> Area in grey demarcates data points for the past 3 days where some cases may still be pending epidemiological investigation. The bar graph shows the daily average number of days from symptoms onset to isolation, while the line graph shows the moving average for the past 14 days. Both graphs exclude cases with no onset date (asymptomatic) in the computation of the average. Community cases with symptoms who are isolated on the same day that symptoms occurred would have an isolation time of 0. There is a gap in the line graph from 16 to 18 Sep as there are no symptomatic cases in the preceding 14 days.

**(4) Number of COVID-19 Cases in Hospitals and Community Care Facilities**

**Figure 4.1:** Summary of Confirmed Cases by Status in the Past 14 Days

Press Release Date	Currently Admitted in Hospitals		In Care Facilities <sup>3</sup>	Total Recovered		Total Demised	Total
	ICU	General Wards		Completed Isolation	Discharged from Hospital		
10-Aug	11	497	1,188	60,179	3,973	42	65,890
11-Aug	8	500	1,109	60,304	3,989	43	65,953
12-Aug	9	461	1,119	60,365	4,015	43	66,012
13-Aug	10	478	992	60,505	4,032	44	66,061
14-Aug	9	442	955	60,603	4,066	44	66,119
15-Aug	8	435	893	60,700	4,092	44	66,172
16-Aug	7	419	853	60,789	4,113	44	66,225
17-Aug	6	398	770	60,924	4,138	45	66,281
18-Aug	6	396	734	60,997	4,155	46	66,334
19-Aug	8	383	687	61,058	4,184	46	66,366
20-Aug	7	373	577	61,198	4,204	47	66,406
21-Aug	7	357	504	61,293	4,235	47	66,443
22-Aug	7	339	482	61,348	4,253	49	66,478
23-Aug	7	329	490	61,417	4,283	50	66,576

**Figure 4.2:** Deaths and New Admissions into ICU Among Local Cases by Notification Date



<sup>3</sup> Community Care Facilities (i.e. D'Resort, Tuas South, AMK ITE, Village Hotel Sentosa, CSC Loyang), Community Hospitals (i.e. Bright Vision Hospital) and other care facilities.