

25 August 2021 Daily Report on COVID-19

(1) Local COVID-19 Cases

Figure 1.1: Summary Statistics for the Past 3 Weeks

	Number of local cases			Percentage of local cases		
	2 weeks before (5 Aug-11 Aug)	Week before (12 Aug-18 Aug)	Past week (19 Aug-25 Aug)	2 weeks before (5 Aug-11 Aug)	Week before (12 Aug-18 Aug)	Past week (19 Aug-25 Aug)
Linked and Already Quarantined	290	195	193	56%	54%	43%
Linked and Detected through Surveillance	101	82	122	19%	23%	27%
Unlinked	129	83	134	25%	23%	30%
Total Community Cases	520	360	449	100%	100%	100%
Community Linked	391	277	315	75%	77%	70%
Community Unlinked	129	83	134	25%	23%	30%
Household Transmission cases (as a percentage of community linked cases)	290	173	222	74%	62%	70%

Figure 1.2: Number of Local Cases by Already Quarantined/ Detected from Surveillance¹
(29 Jul – 25 Aug)

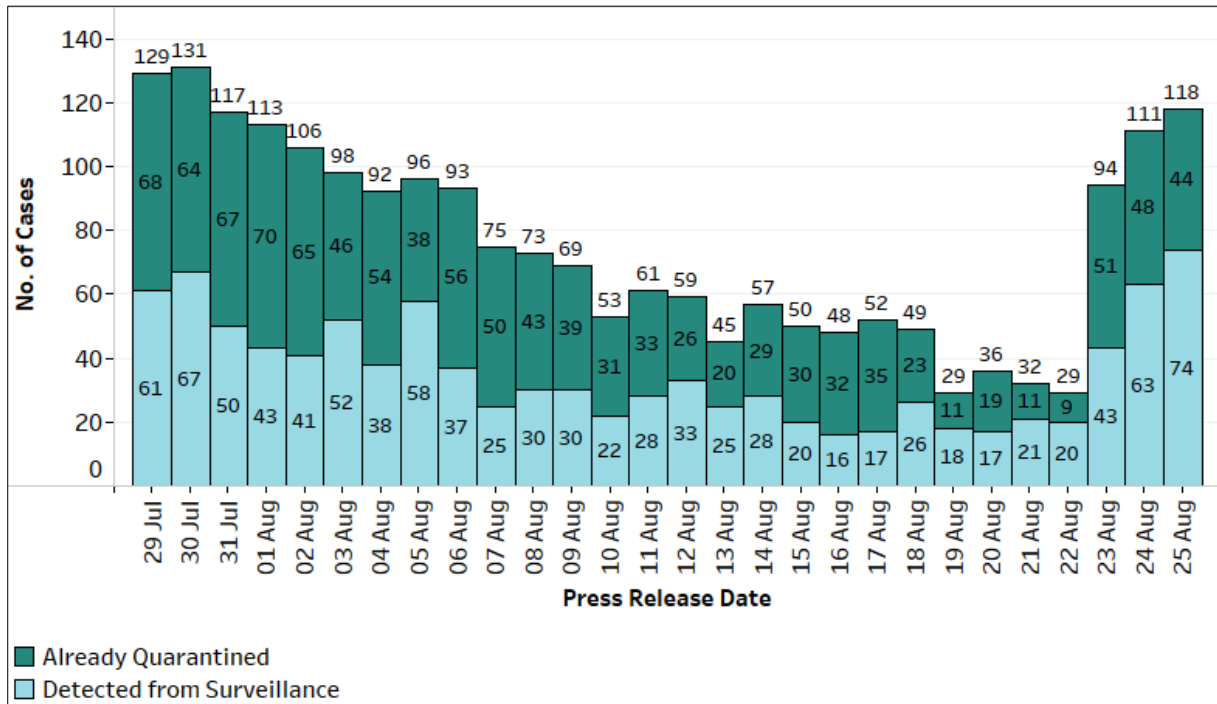
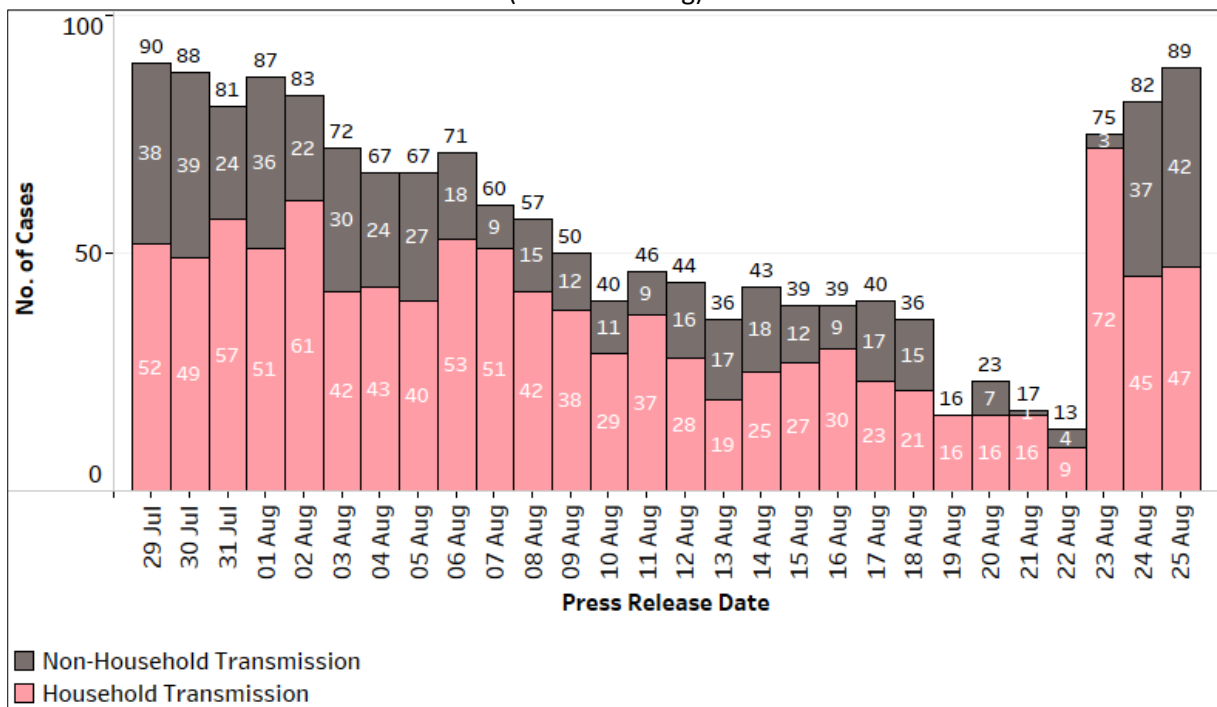


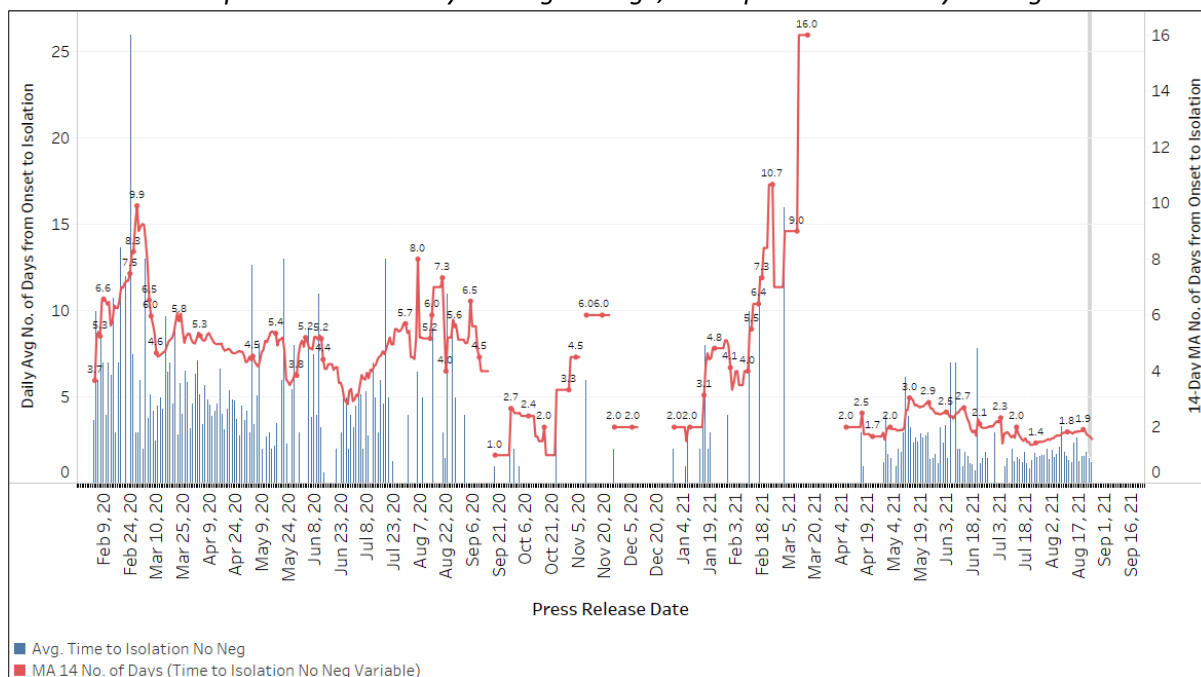
Figure 1.3: Number of Local Linked Cases by Household/ Non-Household Transmission¹
(29 Jul – 25 Aug)



¹ Incorporates re-classifications of earlier reported cases.

(2) Community COVID-19 Cases

Figure 2.1: Average Number of Days from Onset of Symptoms to Isolation (QO, hospital admission or notification to MOH) for Community Cases Detected through Surveillance in Each Day
Line represents the 14-day moving average; Bar represents the daily average²



(3) Imported COVID-19 Cases

Figure 3.1: Serology and Symptom Status of Imported Cases Reported from 12 Aug to 18 Aug

Symptoms	S+	S-	Not Serology Tested	Pending Serology Result	Total No. of Cases
Asymptomatic	12	3	0	1	16
Symptomatic	3	2	0	0	5
Total	15	5	0	1	21

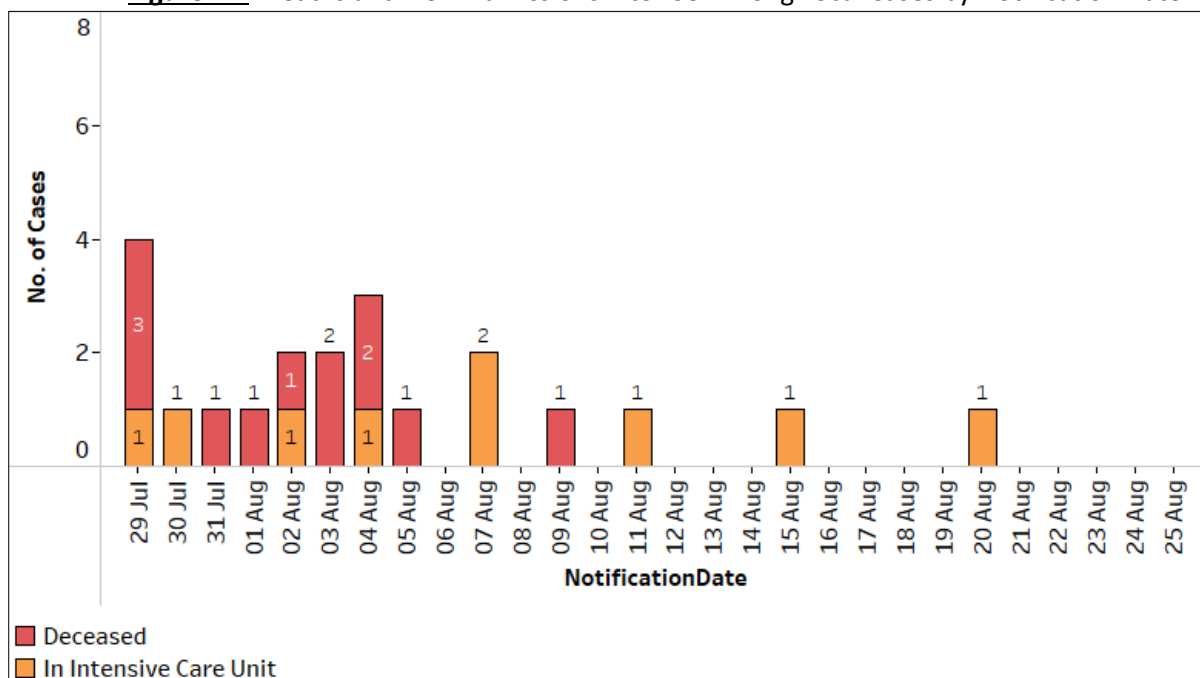
² Area in grey demarcates data points for the past 3 days where some cases may still be pending epidemiological investigation. The bar graph shows the daily average number of days from symptoms onset to isolation, while the line graph shows the moving average for the past 14 days. Both graphs exclude cases with no onset date (asymptomatic) in the computation of the average. Community cases with symptoms who are isolated on the same day that symptoms occurred would have an isolation time of 0. There is a gap in the line graph from 16 to 18 Sep as there are no symptomatic cases in the preceding 14 days.

(4) Number of COVID-19 Cases in Hospitals and Community Care Facilities

Figure 4.1: Summary of Confirmed Cases by Status in the Past 14 Days

Press Release Date	Currently Admitted in Hospitals		In Care Facilities ³	Total Recovered		Total Demised	Total
	ICU	General Wards		Completed Isolation	Discharged from Hospital		
12-Aug	9	461	1,119	60,365	4,015	43	66,012
13-Aug	10	478	992	60,505	4,032	44	66,061
14-Aug	9	442	955	60,603	4,066	44	66,119
15-Aug	8	435	893	60,700	4,092	44	66,172
16-Aug	7	419	853	60,789	4,113	44	66,225
17-Aug	6	398	770	60,924	4,138	45	66,281
18-Aug	6	396	734	60,997	4,155	46	66,334
19-Aug	8	383	687	61,058	4,184	46	66,366
20-Aug	7	373	577	61,198	4,204	47	66,406
21-Aug	7	357	504	61,293	4,235	47	66,443
22-Aug	7	339	482	61,348	4,253	49	66,478
23-Aug	7	329	490	61,417	4,283	50	66,576
24-Aug	7	332	531	61,475	4,297	50	66,692
25-Aug	7	343	585	61,509	4,316	52	66,812

Figure 4.2: Deaths and New Admissions into ICU Among Local Cases by Notification Date



³ Community Care Facilities (i.e. D'Resort, Tuas South, AMK ITE, Village Hotel Sentosa, CSC Loyang), Community Hospitals (i.e. Bright Vision Hospital) and other care facilities.