

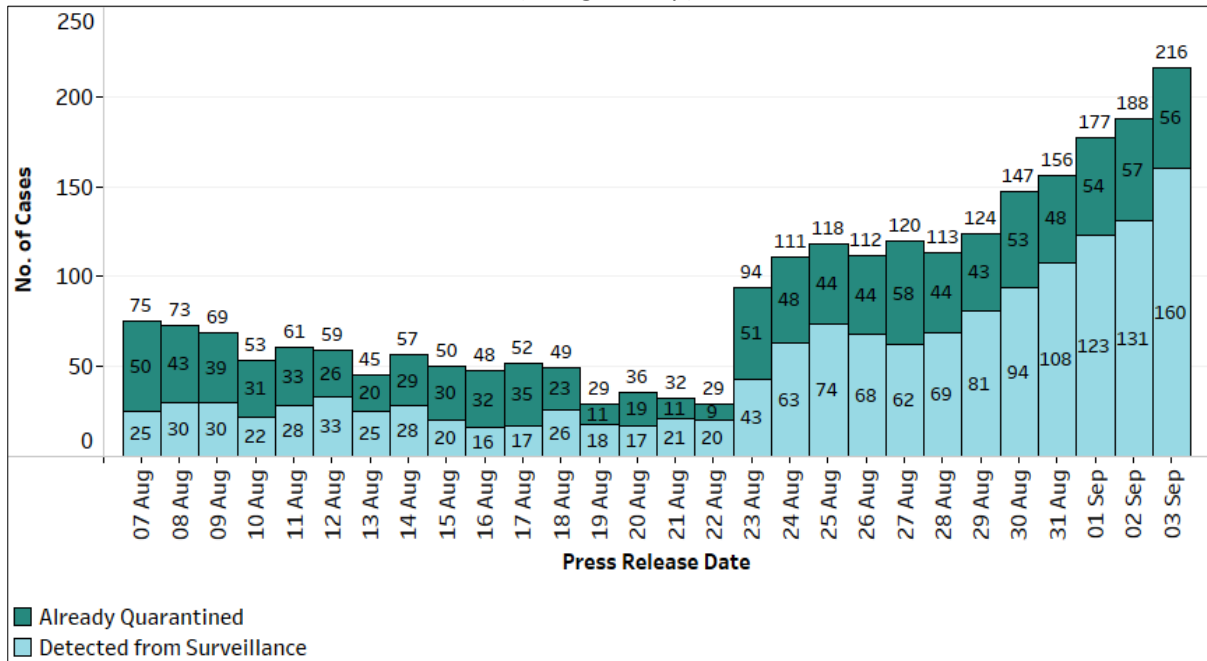
**3 September 2021 Daily Report on COVID-19**

**(1) Local COVID-19 Cases**

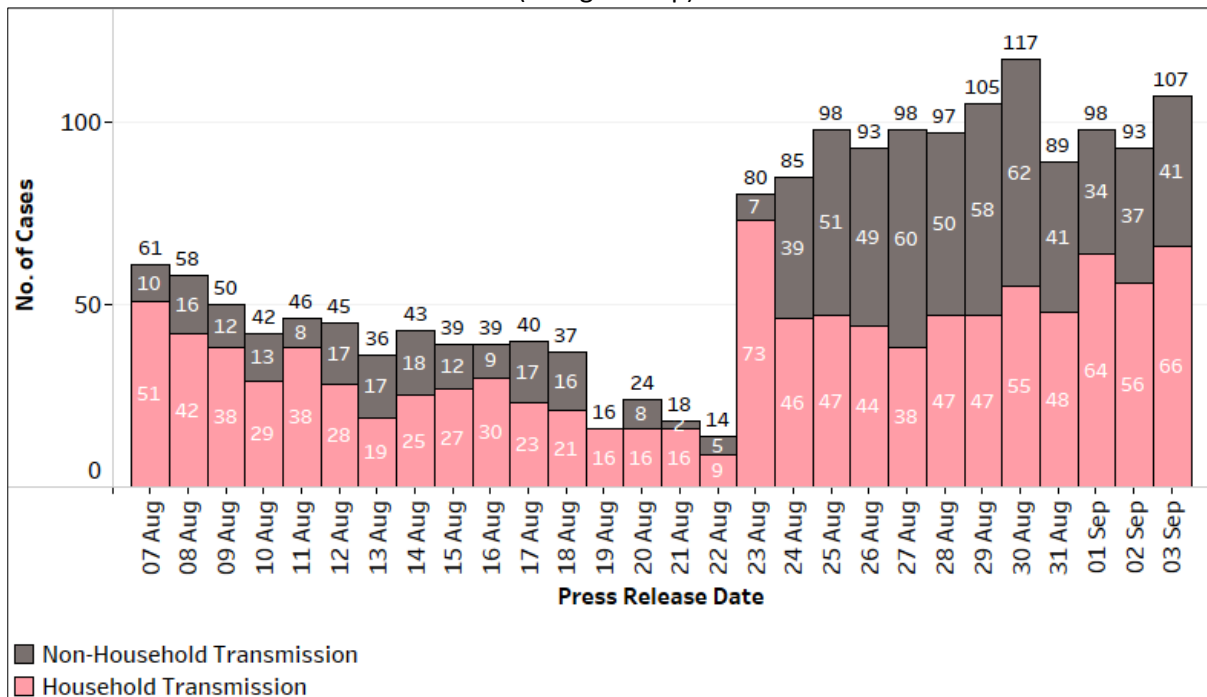
**Figure 1.1:** Summary Statistics for the Past 3 Weeks

	Number of local cases			Percentage of local cases		
	2 weeks before (14 Aug-20 Aug)	Week before (21 Aug-27 Aug)	Past week (28 Aug-3 Sep)	2 weeks before (14 Aug-20 Aug)	Week before (21 Aug-27 Aug)	Past week (28 Aug-3 Sep)
Linked and Already Quarantined	179	265	354	56%	43%	32%
Linked and Detected through Surveillance	59	221	352	18%	36%	31%
Unlinked	83	130	415	26%	21%	37%
<b>Total Local Cases</b>	<b>321</b>	<b>616</b>	<b>1121</b>	<b>100%</b>	<b>100%</b>	<b>100%</b>
Local Linked	238	486	706	74%	79%	63%
Local Unlinked	83	130	415	26%	21%	37%
Household Transmission cases (as a percentage of community linked cases)	159	273	383	67%	56%	54%

**Figure 1.2:** Number of Local Cases by Already Quarantined/ Detected from Surveillance<sup>1</sup>  
(7 Aug – 3 Sep)



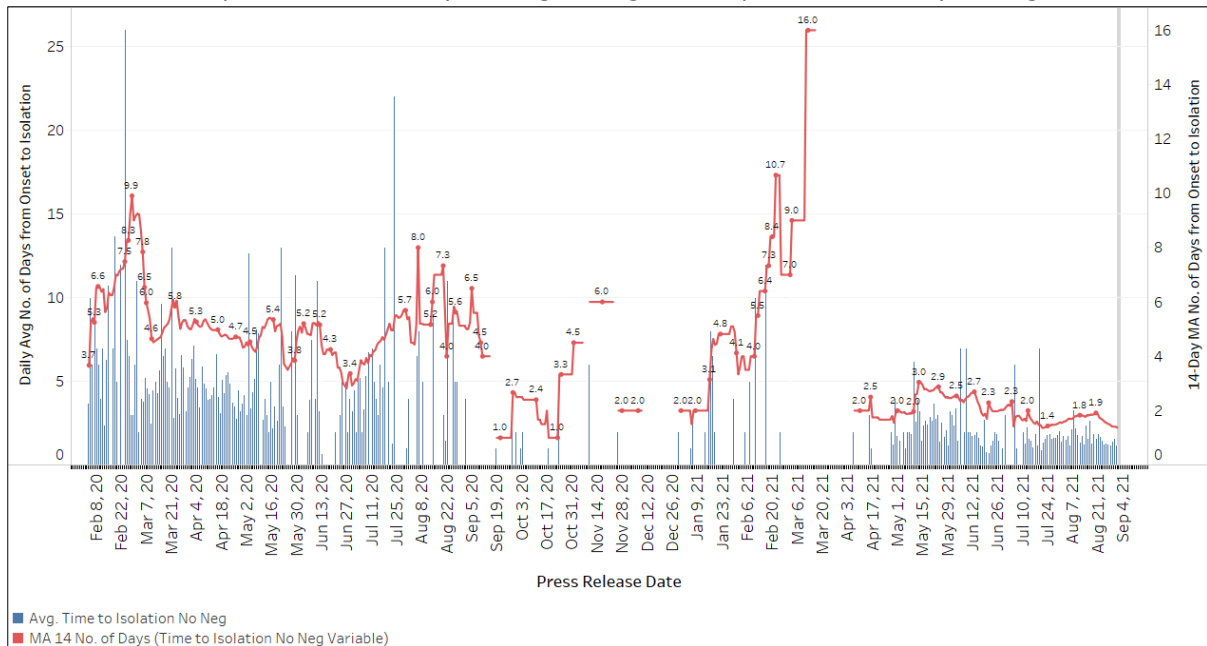
**Figure 1.3:** Number of Local Linked Cases by Household/ Non-Household Transmission<sup>1</sup>  
(7 Aug – 3 Sep)



<sup>1</sup> Incorporates re-classifications of earlier reported cases.

**(2) Community COVID-19 Cases**

**Figure 2.1:** Average Number of Days from Onset of Symptoms to Isolation (QO, hospital admission or notification to MOH) for Community Cases Detected through Surveillance in Each Day  
 Line represents the 14-day moving average; Bar represents the daily average<sup>2</sup>



**(3) Imported COVID-19 Cases**

**Figure 3.1:** Serology and Symptom Status of Imported Cases Reported from 21 Aug to 27 Aug

Symptoms	S+	S-	Not Serology Tested	Pending Serology Result	Total No. of Cases
Asymptomatic	16	4	0	4	24
Symptomatic	3	1	0	0	4
<b>Total</b>	<b>19</b>	<b>5</b>	<b>0</b>	<b>4</b>	<b>28</b>

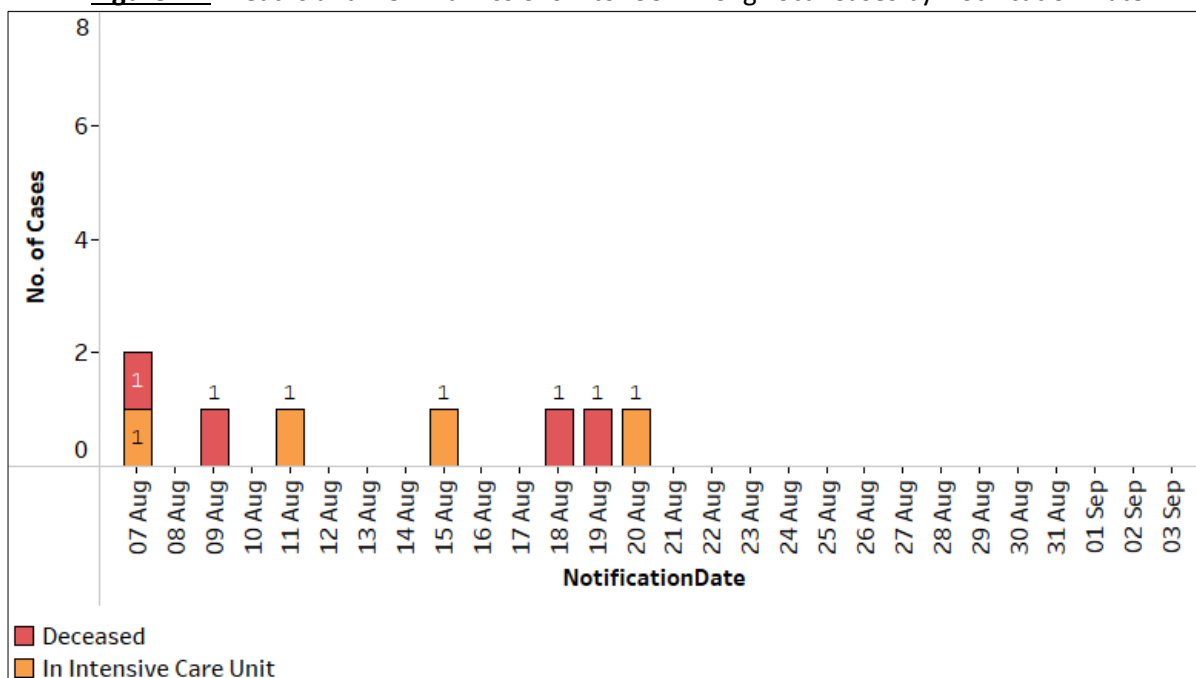
<sup>2</sup> Area in grey demarcates data points for the past 3 days where some cases may still be pending epidemiological investigation. The bar graph shows the daily average number of days from symptoms onset to isolation, while the line graph shows the moving average for the past 14 days. Both graphs exclude cases with no onset date (asymptomatic) in the computation of the average. Community cases with symptoms who are isolated on the same day that symptoms occurred would have an isolation time of 0. There is a gap in the line graph from 16 to 18 Sep as there are no symptomatic cases in the preceding 14 days.

**(4) Number of COVID-19 Cases in Hospitals and Community Care Facilities**

**Figure 4.1:** Summary of Confirmed Cases by Status in the Past 14 Days

Press Release Date	Currently Admitted in Hospitals		In Care Facilities <sup>3</sup>	Total Recovered		Total Demised	Total
	ICU	General Wards		Completed Isolation	Discharged from Hospital		
21-Aug	7	357	504	61,293	4,235	47	66,443
22-Aug	7	339	482	61,348	4,253	49	66,478
23-Aug	7	329	490	61,417	4,283	50	66,576
24-Aug	7	332	531	61,475	4,297	50	66,692
25-Aug	7	343	585	61,509	4,316	52	66,812
26-Aug	7	336	624	61,562	4,347	52	66,928
27-Aug	6	363	658	61,611	4,357	55	67,050
28-Aug	6	383	705	61,648	4,374	55	67,171
29-Aug	6	408	743	61,697	4,395	55	67,304
30-Aug	5	436	831	61,716	4,416	55	67,459
31-Aug	5	458	928	61,743	4,431	55	67,620
1-Sep	5	494	1,024	61,781	4,441	55	67,800
2-Sep	5	523	1,096	61,849	4,463	55	67,991
3-Sep	5	575	1,207	61,890	4,478	55	68,210

**Figure 4.2:** Deaths and New Admissions into ICU Among Local Cases by Notification Date



<sup>3</sup> Community Care Facilities (i.e. D'Resort, Tuas South, AMK ITE, Village Hotel Sentosa, CSC Loyang, Connect@Changi), Community Hospitals (i.e. Bright Vision Hospital) and other care facilities.