

13 September 2021 Daily Report on COVID-19

Figure 1: Summary Statistics for the Past 3 Weeks

	Number of local cases			Percentage of local cases		
	2 weeks before (24 Aug-30 Aug)	Week before (31 Aug-6 Sep)	Past week (7 Sep-13 Sep)	2 weeks before (24 Aug-30 Aug)	Week before (31 Aug-6 Sep)	Past week (7 Sep-13 Sep)
Linked and Already Quarantined	334	450	1003	40%	32%	30%
Linked and Detected through Surveillance	360	392	641	43%	28%	19%
Unlinked	151	569	1713	18%	40%	51%
Household Transmission cases (as a percentage of local linked cases)	324	486	1215	47%	58%	74%

Figure 2: Number of Local Cases by Already Quarantined/ Detected from Surveillance¹
(17 Aug – 13 Sep)

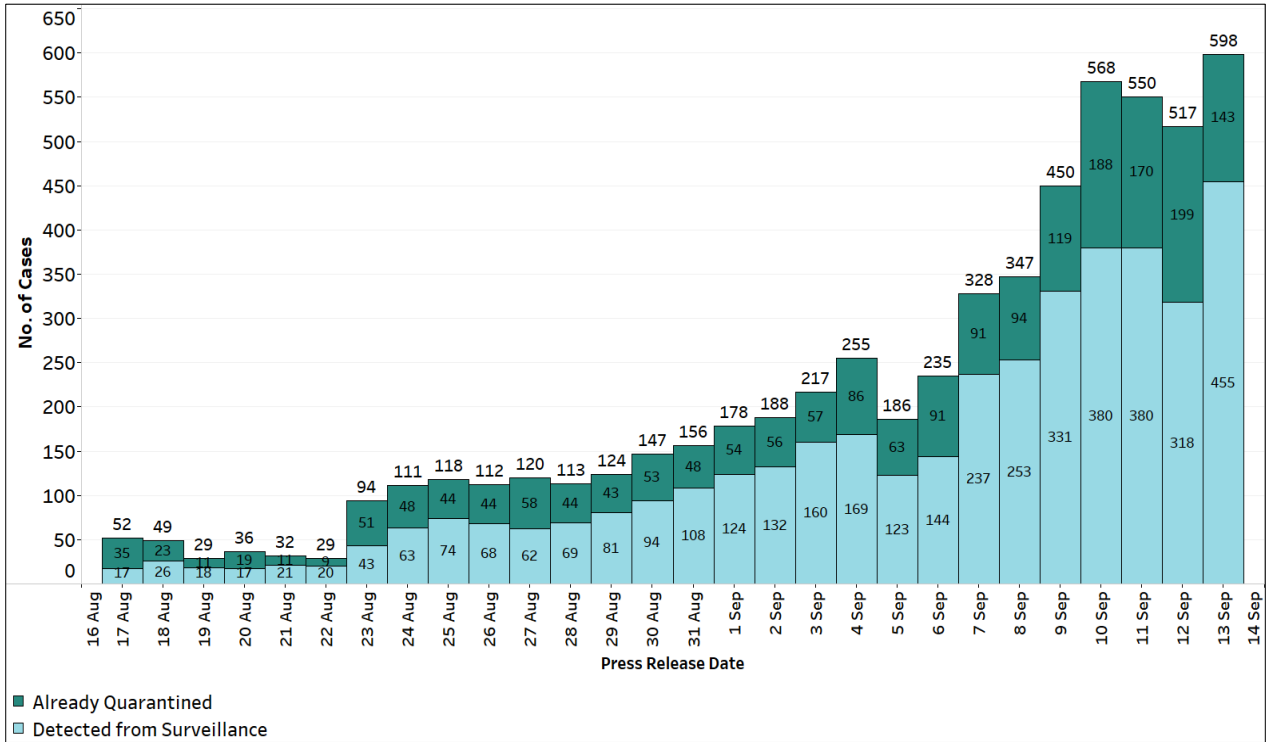
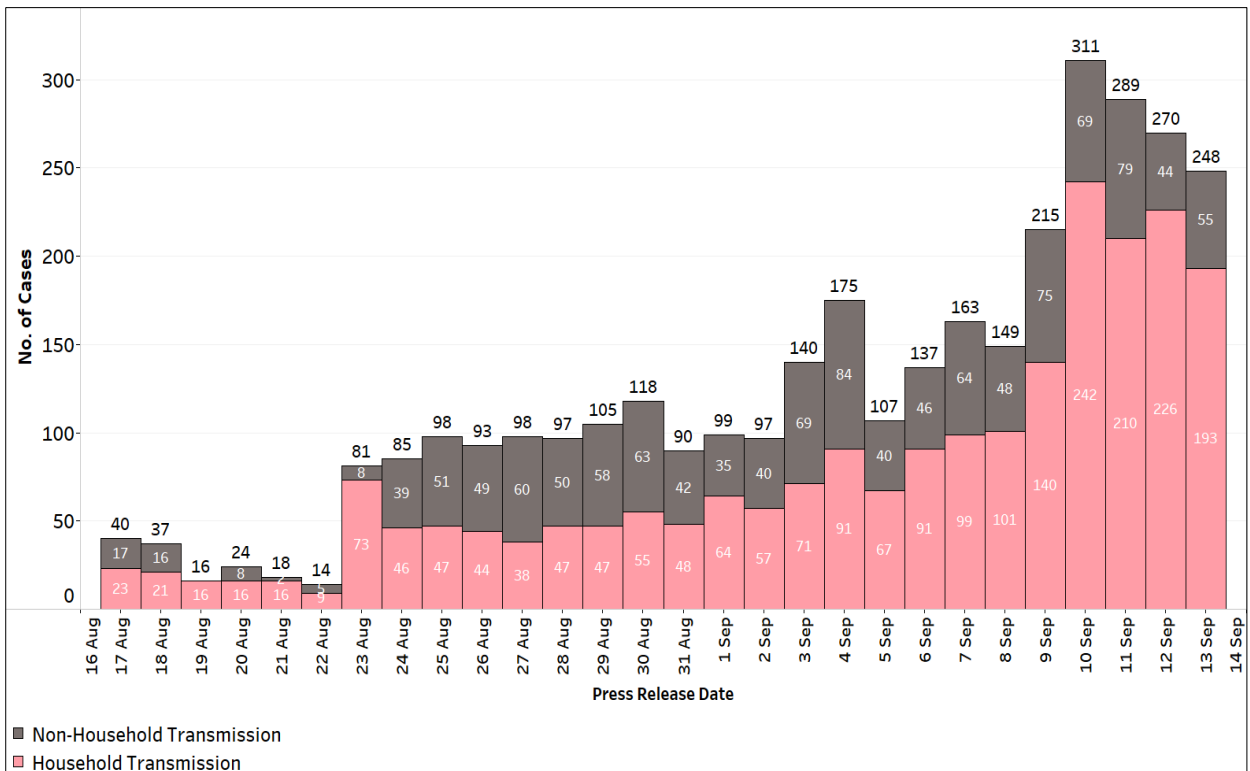


Figure 3: Number of Local Linked Cases by Household/ Non-Household Transmission¹
(17 Aug – 13 Sep)



¹ Incorporates re-classifications of earlier reported cases.

Figure 4: Number of Local Cases by Age (14 Jul – 13 Sep)

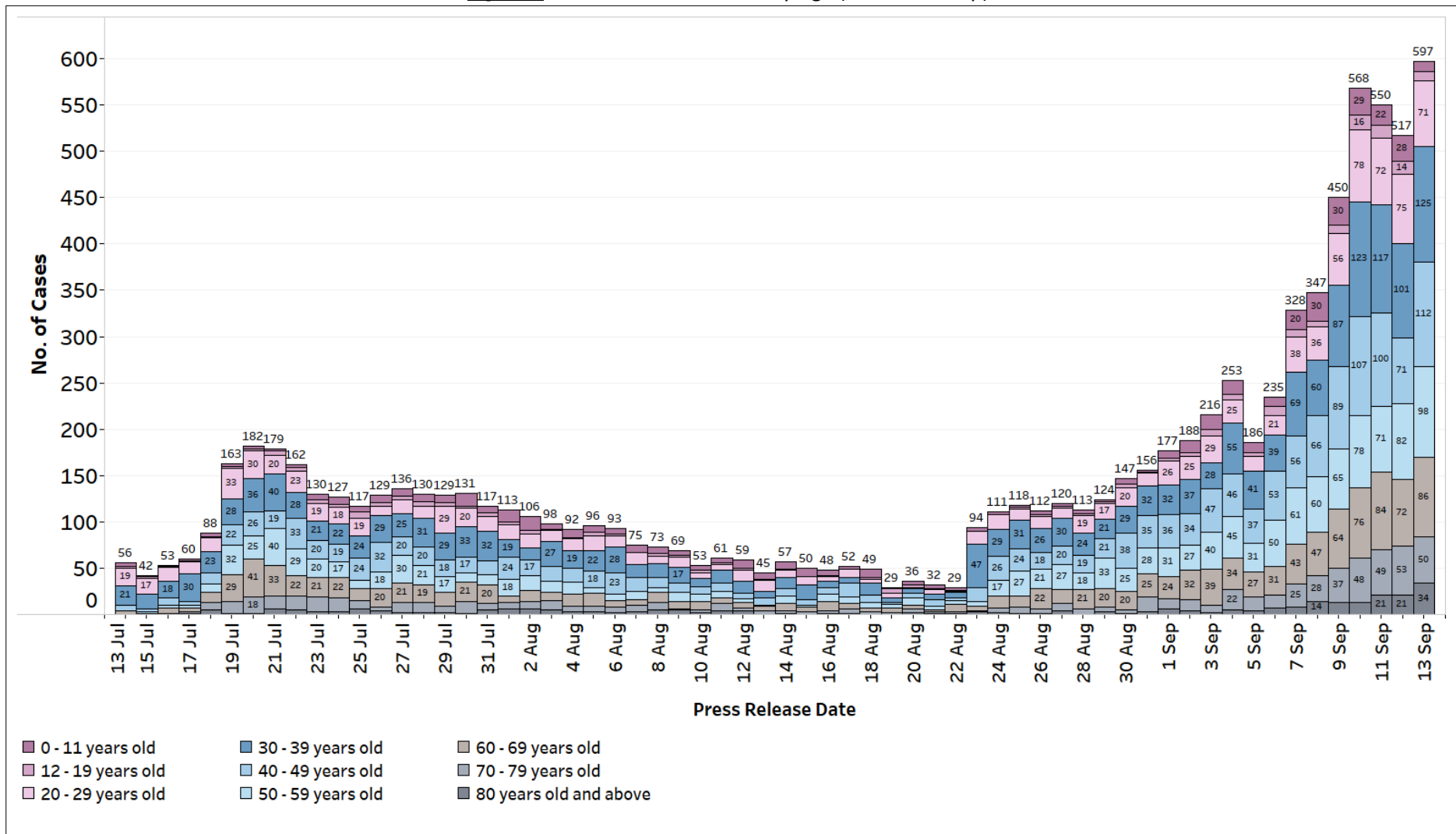
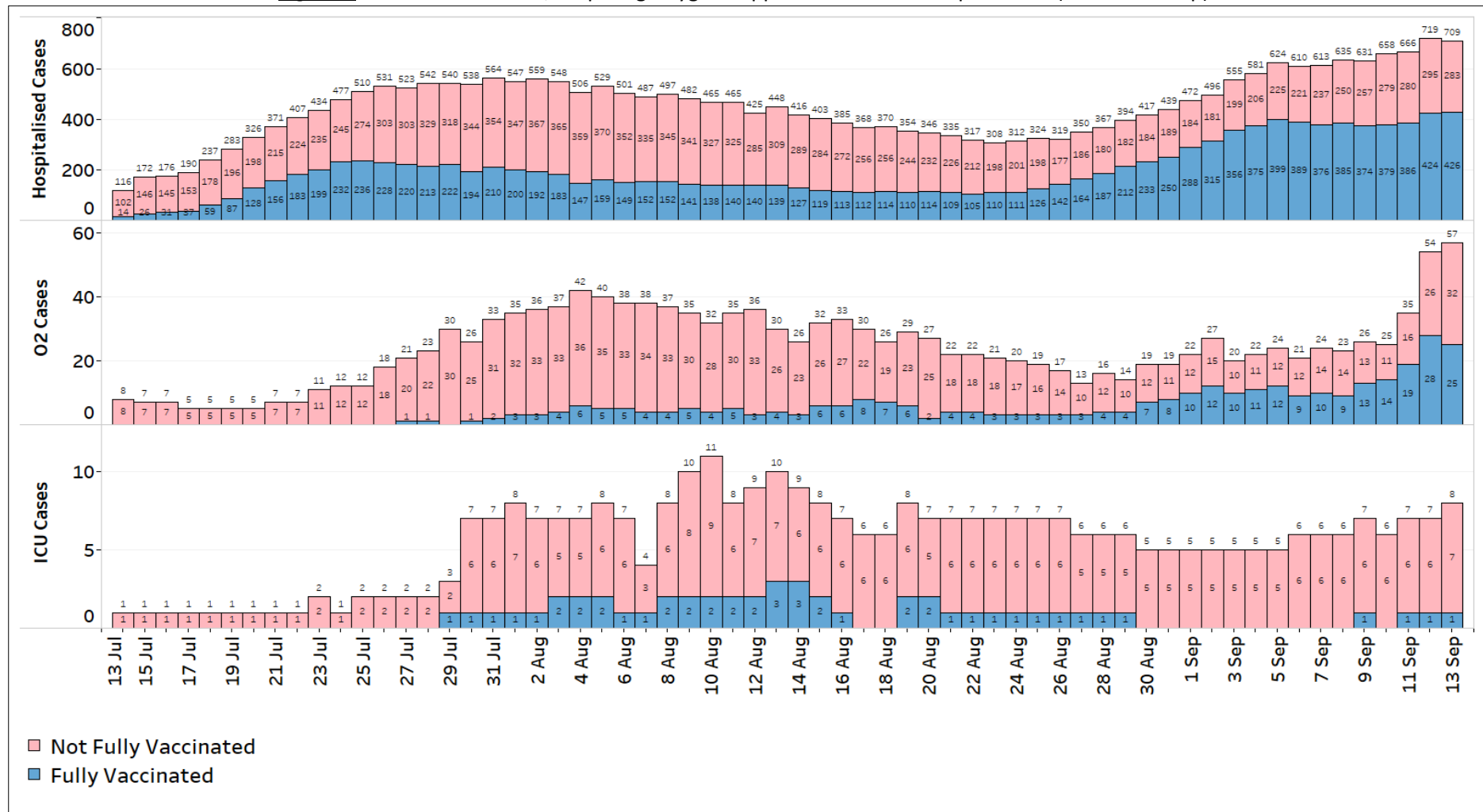


Figure 5: Active Cases in ICU, Requiring Oxygen Supplementation or Hospitalised² (14 Jul – 13 Sep)



² Not fully vaccinated status includes persons who are partially vaccinated and completely unvaccinated.

Figure 6: Average Number of Days from Onset of Symptoms to Isolation (QO, hospital admission or notification to MOH) for Community Cases Detected through Surveillance in Each Day
 Line represents the 14-day moving average; Bar represents the daily average³

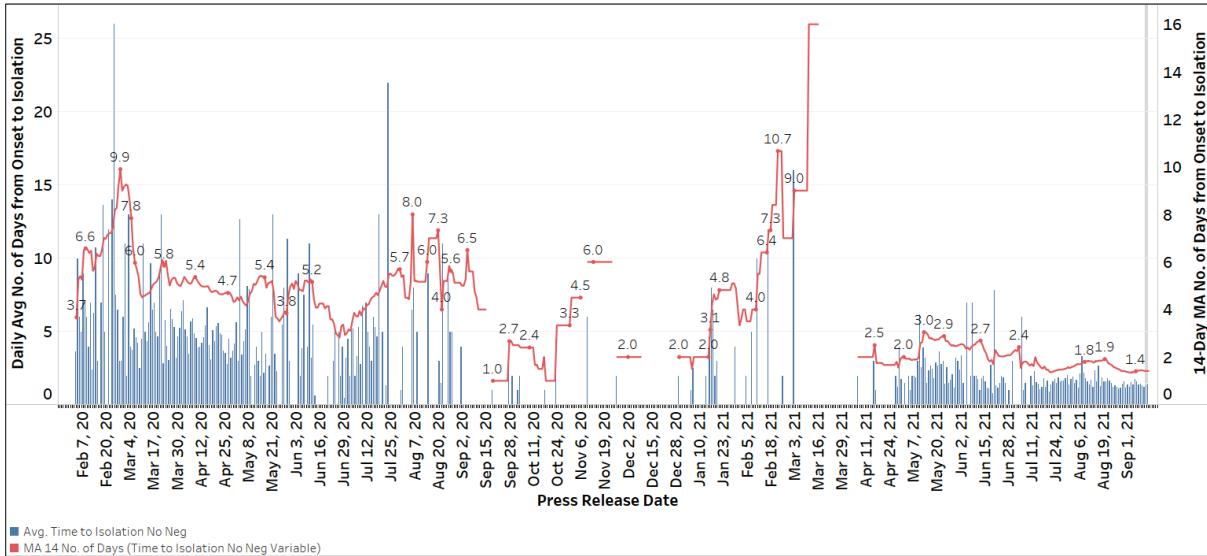


Figure 7: Serology and Symptom Status of Imported Cases Reported from 31 Aug to 6 Sep

Symptoms	S+	S-	Not Serology Tested	Pending Serology Result	Total No. of Cases
Asymptomatic	11	5	0	1	17
Symptomatic	6	6	0	2	14
Total	17	11	0	3	31

³ Area in grey demarcates data points for the past 3 days where some cases may still be pending epidemiological investigation. The bar graph shows the daily average number of days from symptoms onset to isolation, while the line graph shows the moving average for the past 14 days. Both graphs exclude cases with no onset date (asymptomatic) in the computation of the average. Community cases with symptoms who are isolated on the same day that symptoms occurred would have an isolation time of 0. There is a gap in the line graph from 16 to 18 Sep as there are no symptomatic cases in the preceding 14 days.

Figure 8: Deaths and New Admissions into ICU Among Local Cases by Notification Date

