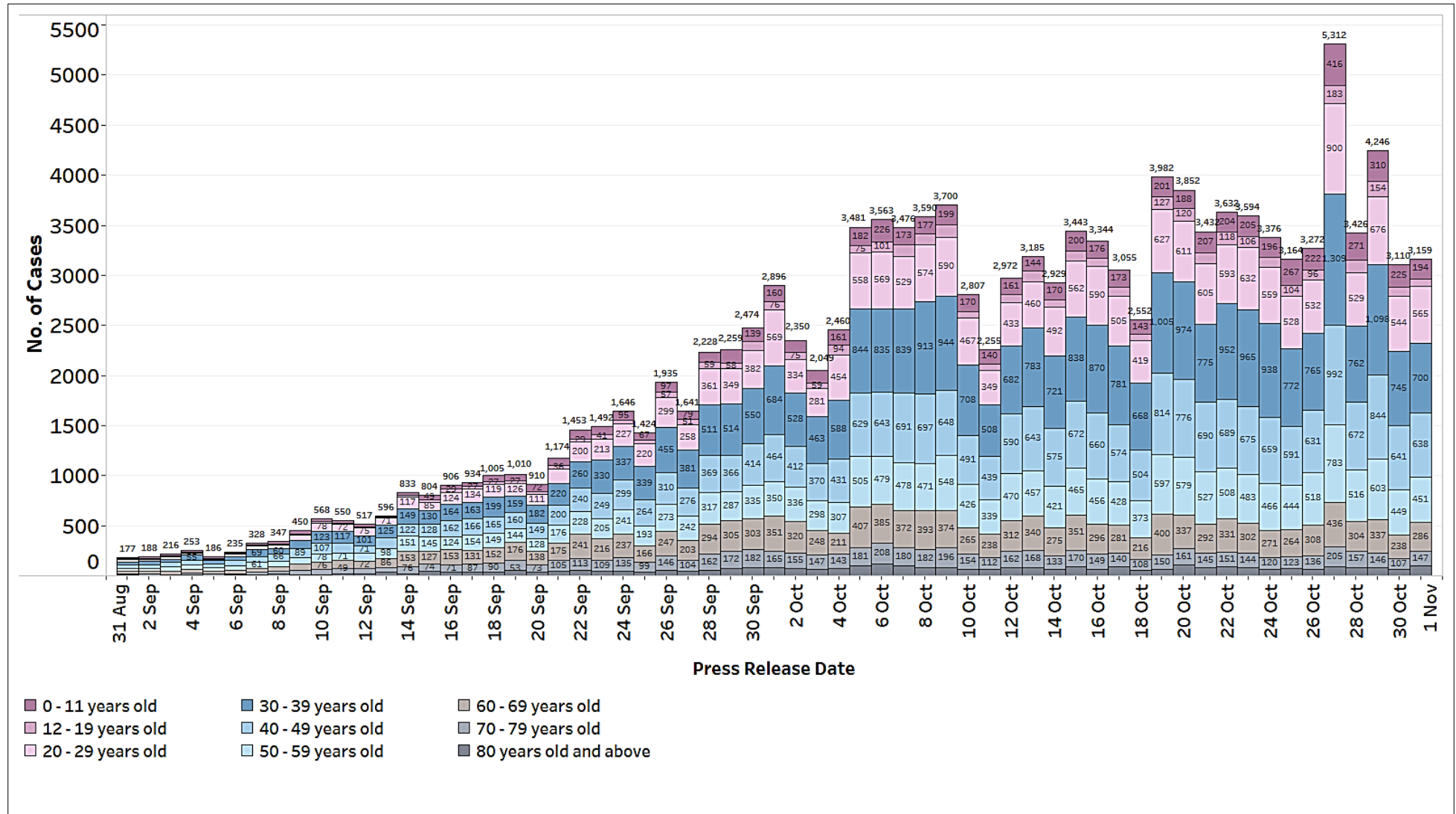
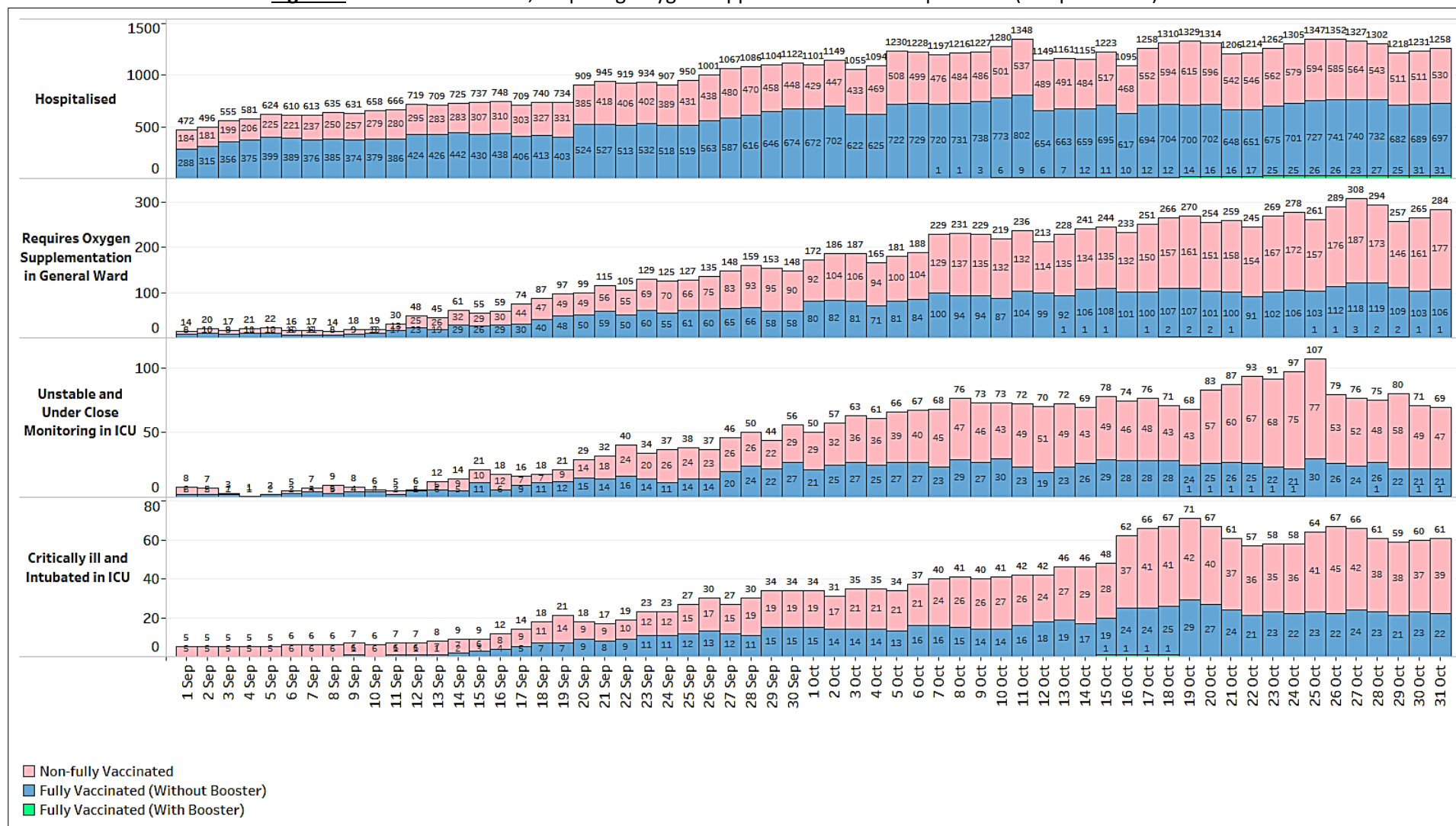


### 31 October 2021 Daily Report on COVID-19

**Figure 1:** Number of Local Cases by Age (1 Sep – 31 Oct)

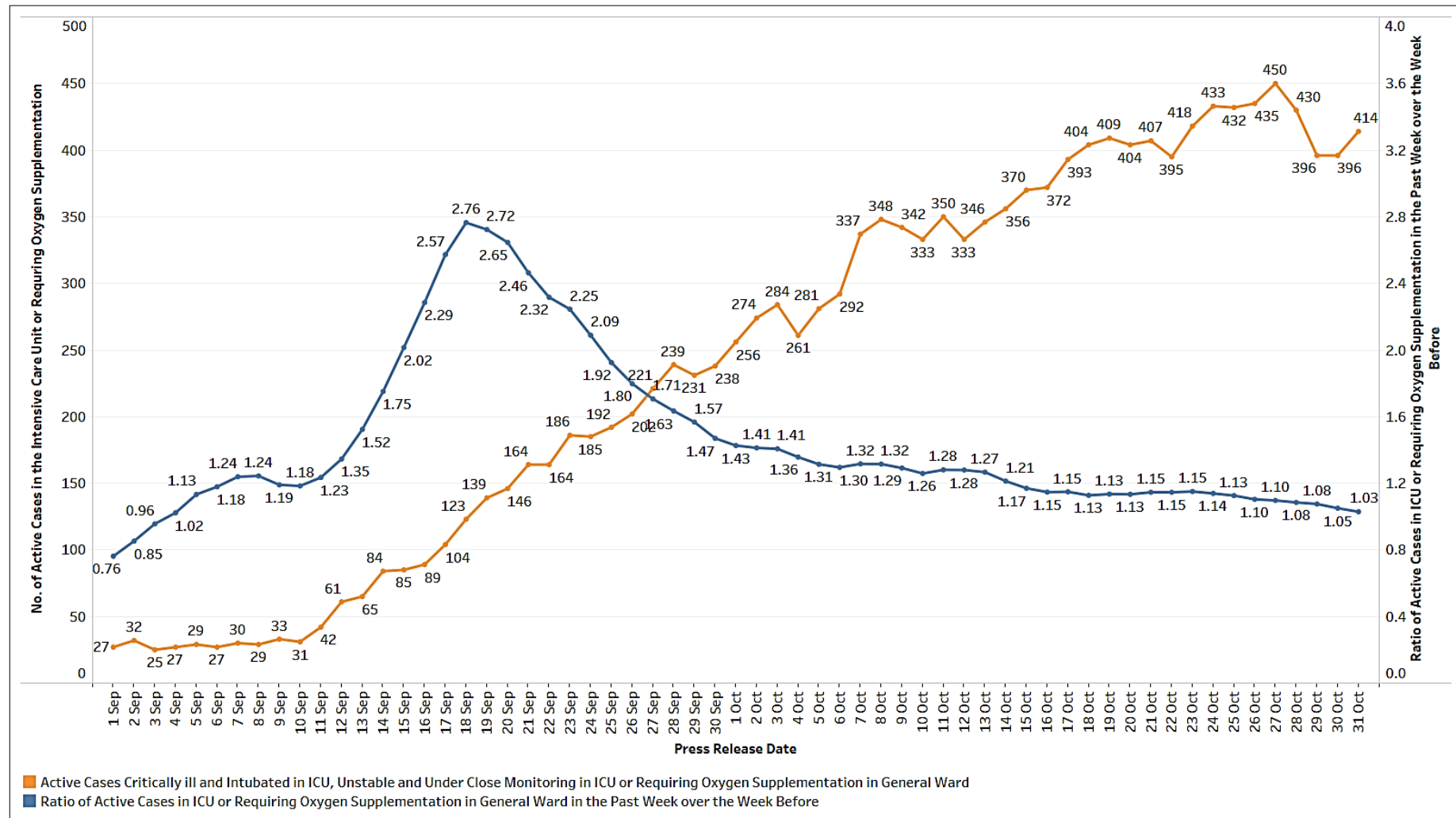


**Figure 2:** Active Cases in ICU, Requiring Oxygen Supplementation or Hospitalised<sup>1</sup> (1 Sep – 31 Oct)

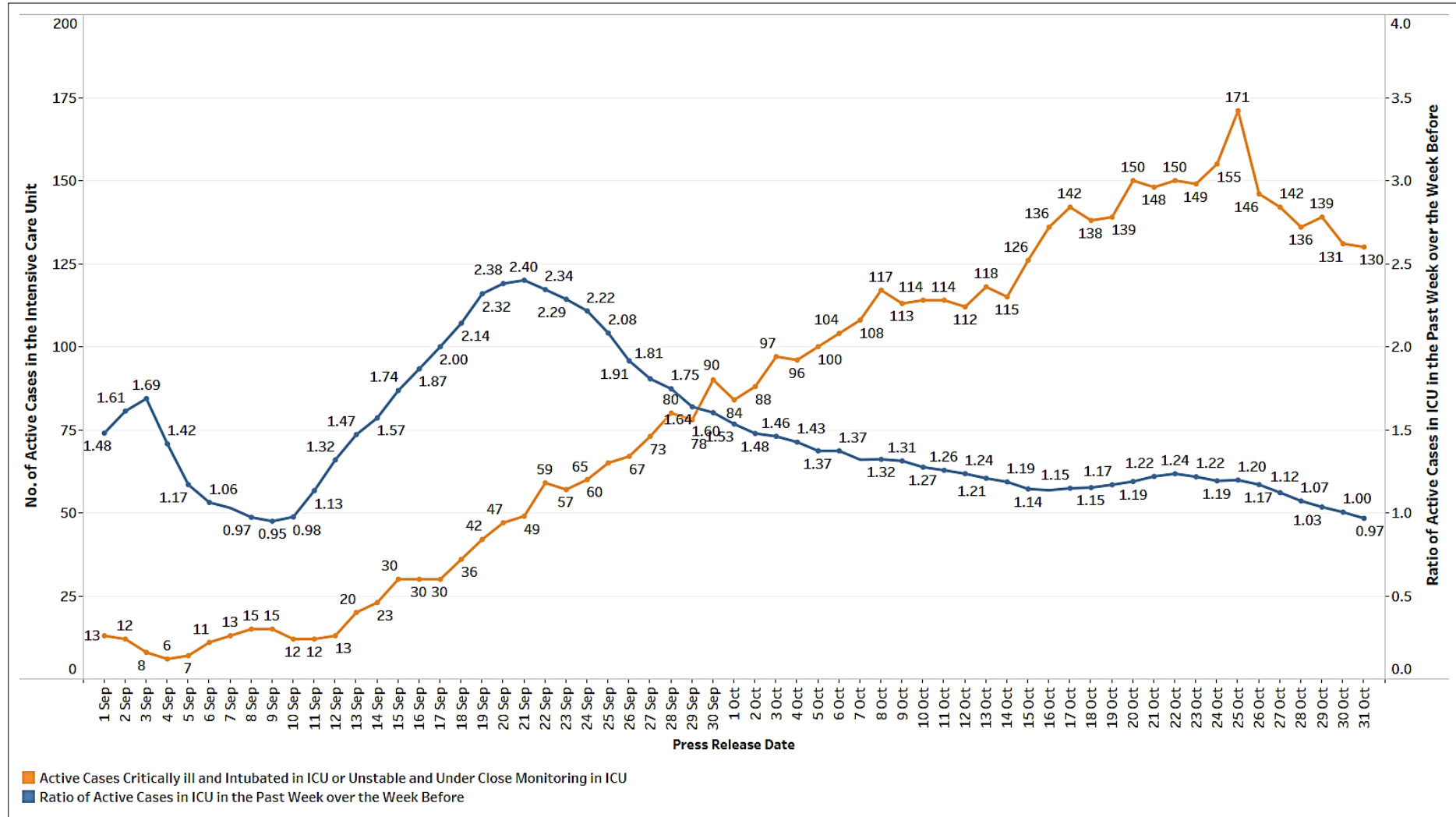


<sup>1</sup> Not fully vaccinated status includes persons who are partially vaccinated and completely unvaccinated.

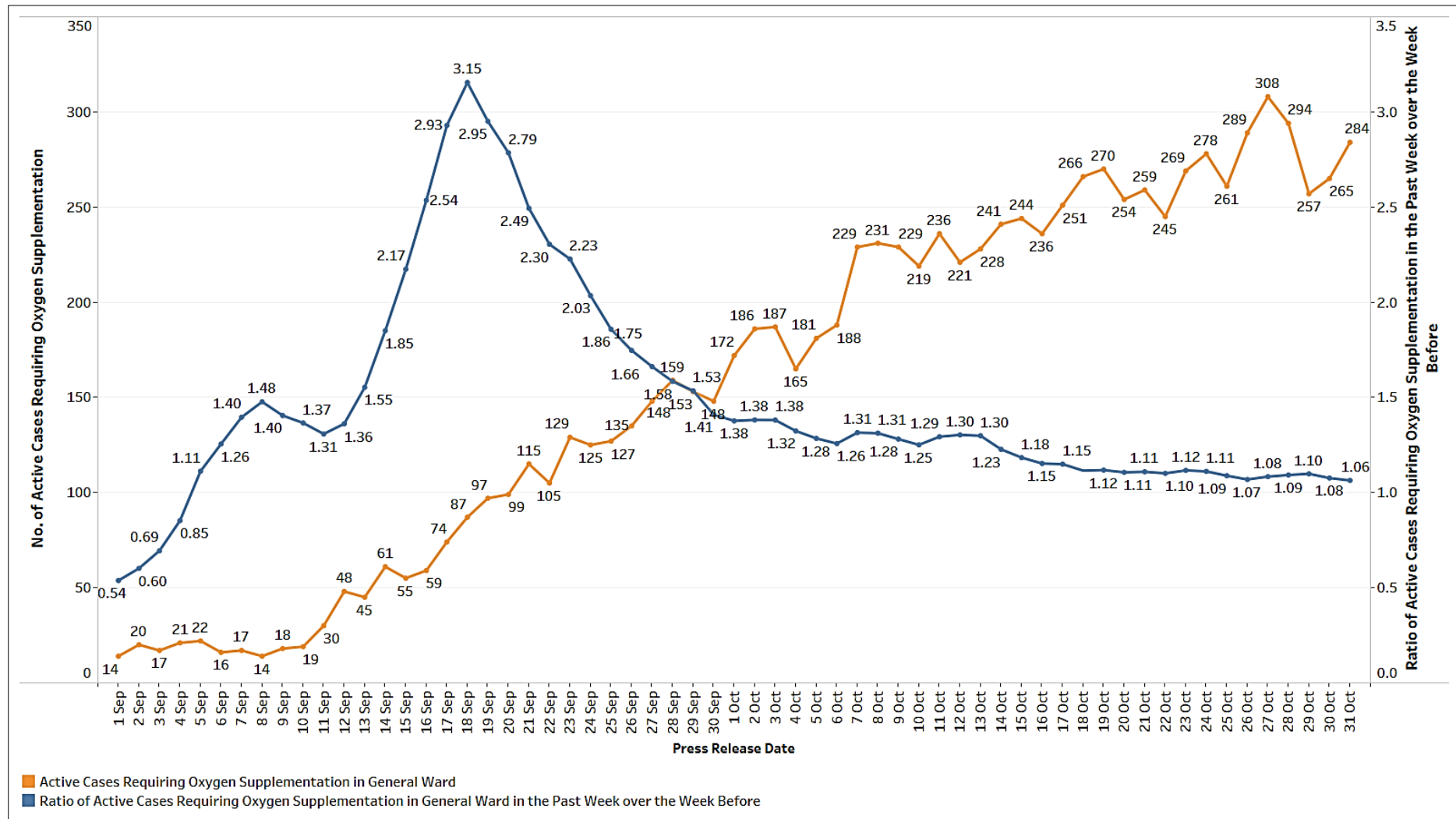
**Figure 3:** Active Cases Critically ill and Intubated in ICU, Unstable and Under Close Monitoring in ICU or Requiring Oxygen Supplementation in General Ward, and Ratio of Active Cases in ICU or Requiring Oxygen Supplementation in General Ward in the Past Week over the Week Before (1 Sep – 31 Oct)



**Figure 4:** Active Cases Critically ill and Intubated in ICU or Unstable and Under Close Monitoring in ICU, and Ratio of Active Cases in ICU in the Past Week over the Week Before (1 Sep – 31 Oct)



**Figure 5:** Active Cases Requiring Oxygen Supplementation in General Ward, and Ratio of Active Cases Requiring Oxygen Supplementation in General Ward in the Past Week over the Week Before (1 Sep – 31 Oct)



**Figure 6:** Deaths, Admissions into ICU and Discharges from ICU  
Among Local Cases by Notification Date

