

4 December 2021 Daily Report on COVID-19

Figure 1: Number of Local Cases by Age (5 Oct – 4 Dec)

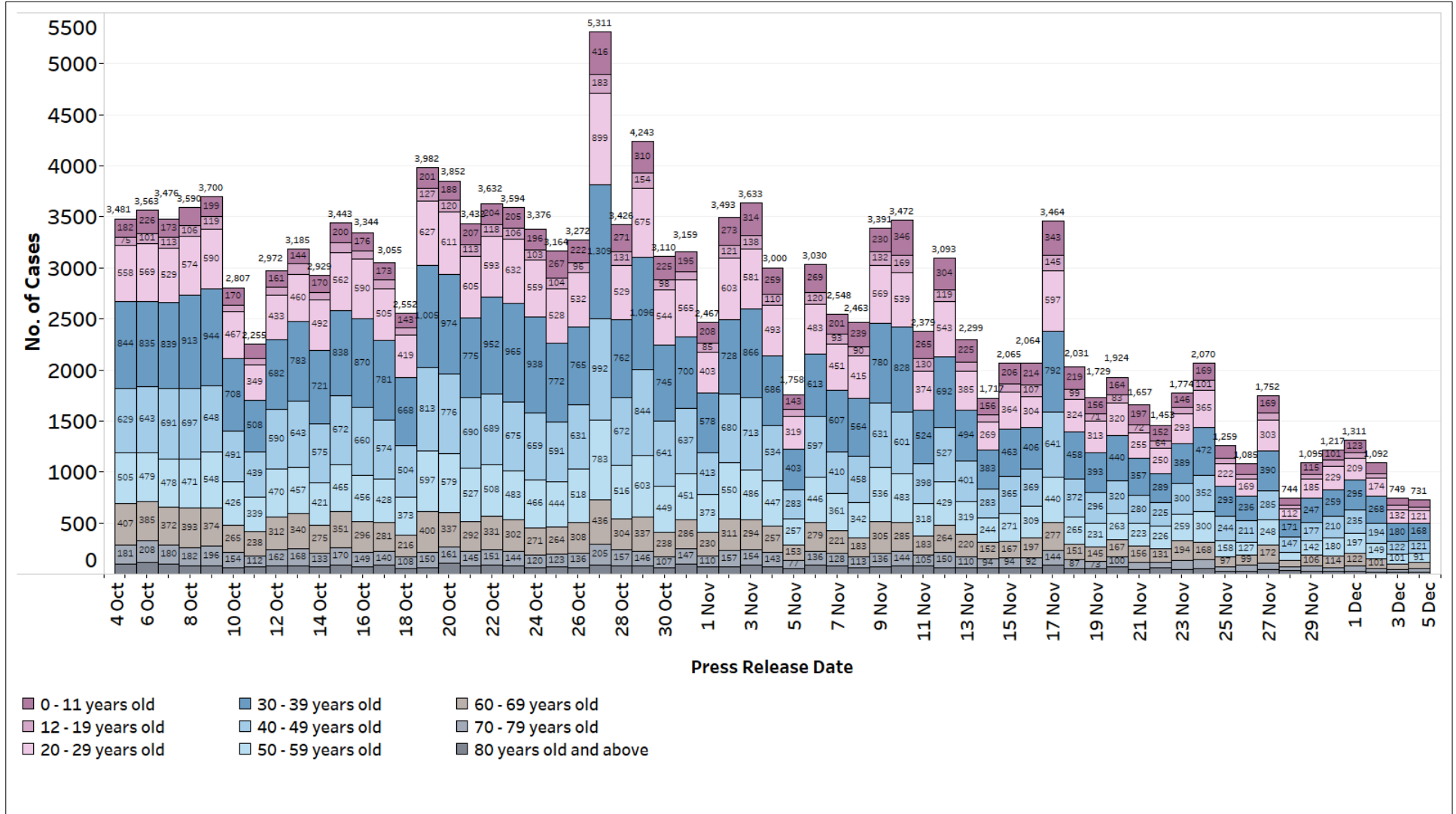
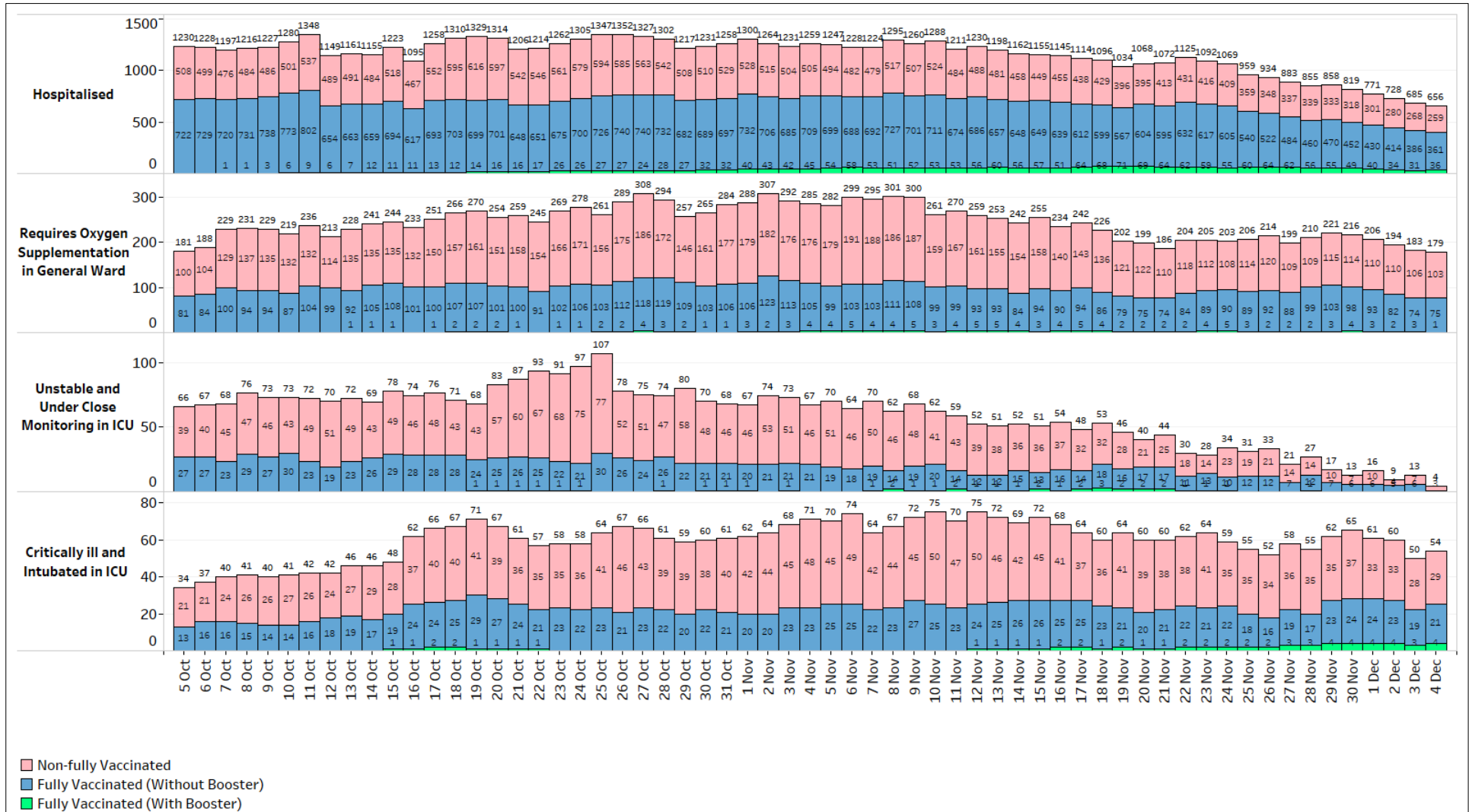


Figure 2: Active Cases in ICU, Requiring Oxygen Supplementation or Hospitalised¹ (5 Oct – 4 Dec)



¹ Non-fully vaccinated status includes persons who are partially vaccinated and completely unvaccinated.

Figure 3: 7-Day Moving Average of Number of Active Cases between 60 – 69, and 70 years old and Above that are Critically ill and Intubated in ICU, per 100,000 Population by Vaccination Status (9 Oct – 4 Dec)

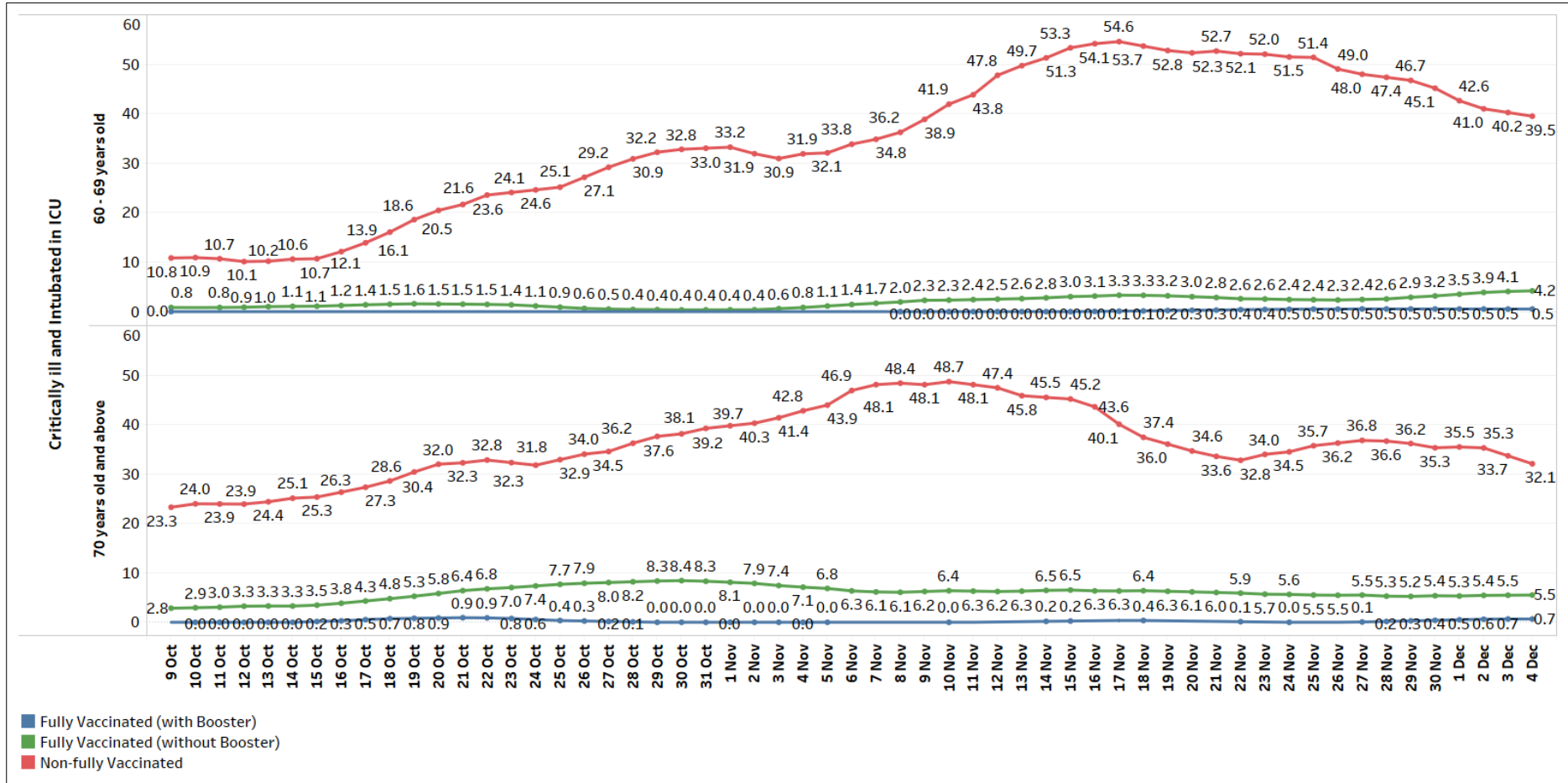


Figure 4: 7-Day Moving Average of Number of Deaths between 60 – 69, and 70 years old and Above, per 100,000 Population by Vaccination Status (9 Oct – 4 Dec)

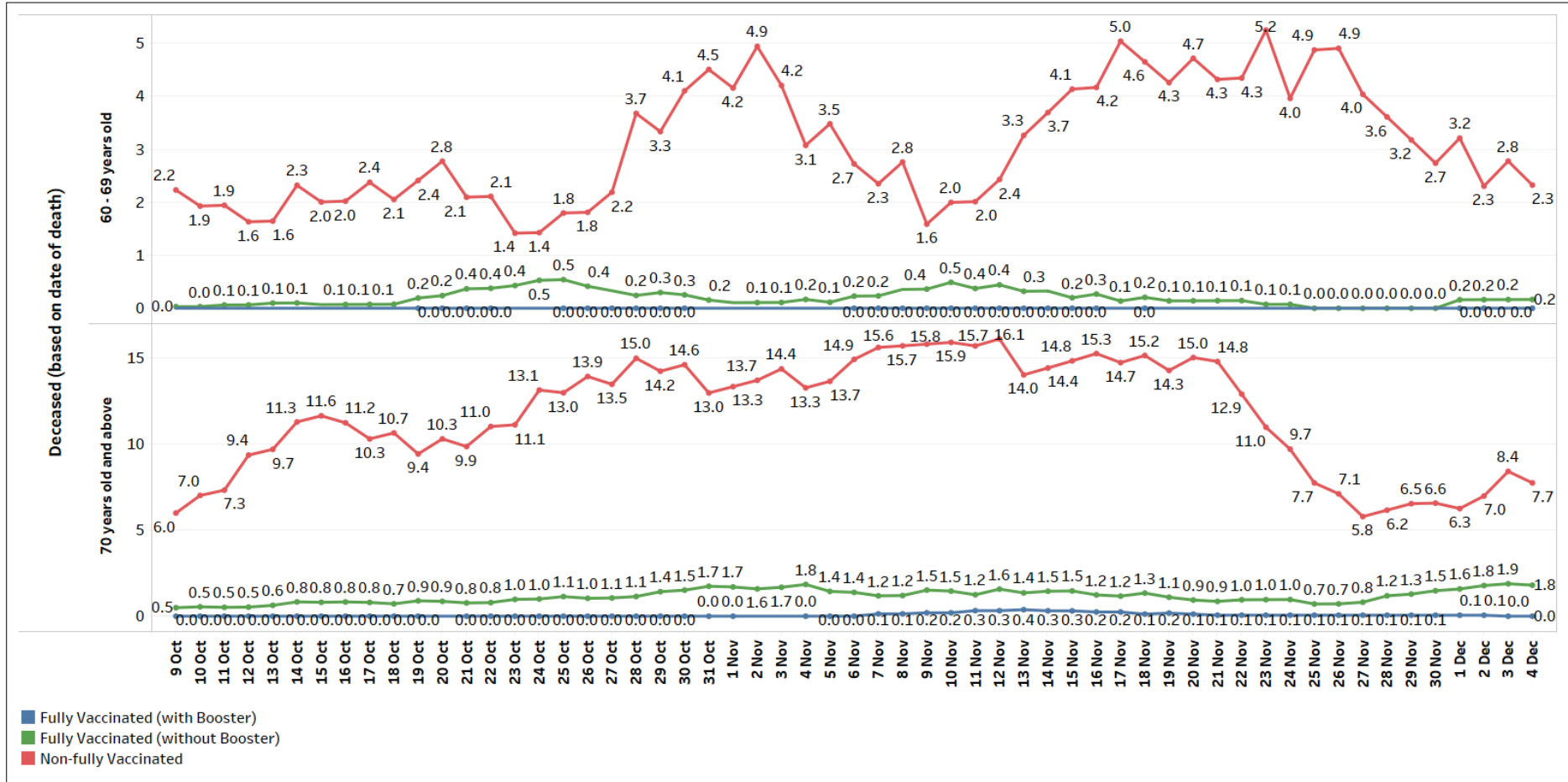


Figure 5: General Wards O2 + ICU (Intubated + Close Monitoring), Number of Cases and Week-on-Week Ratio of Cases (5 Oct – 4 Dec)

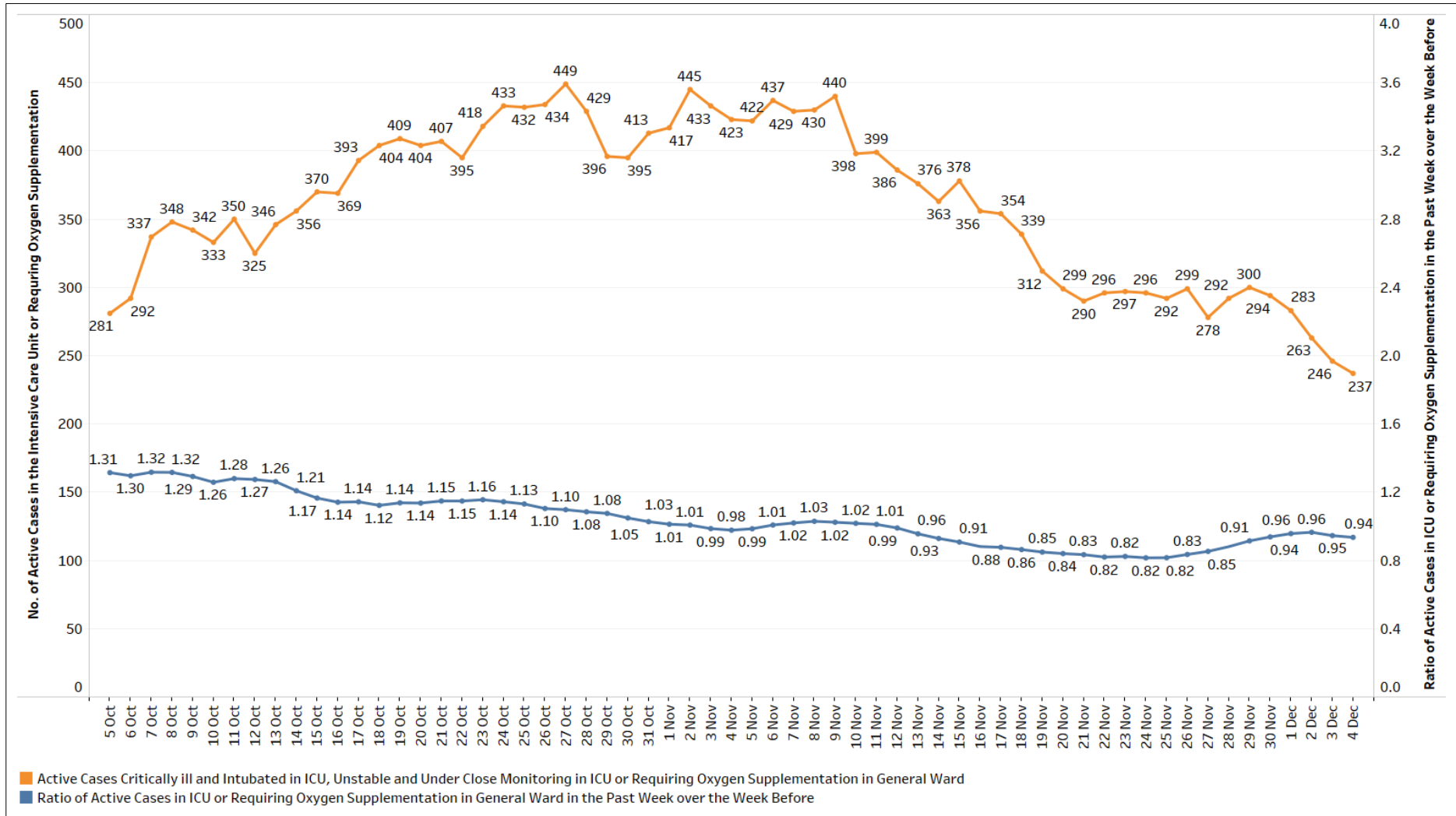


Figure 6: ICU (Intubated + Close Monitoring), Number of Cases and Week-on-Week Ratio of Cases (5 Oct – 4 Dec)

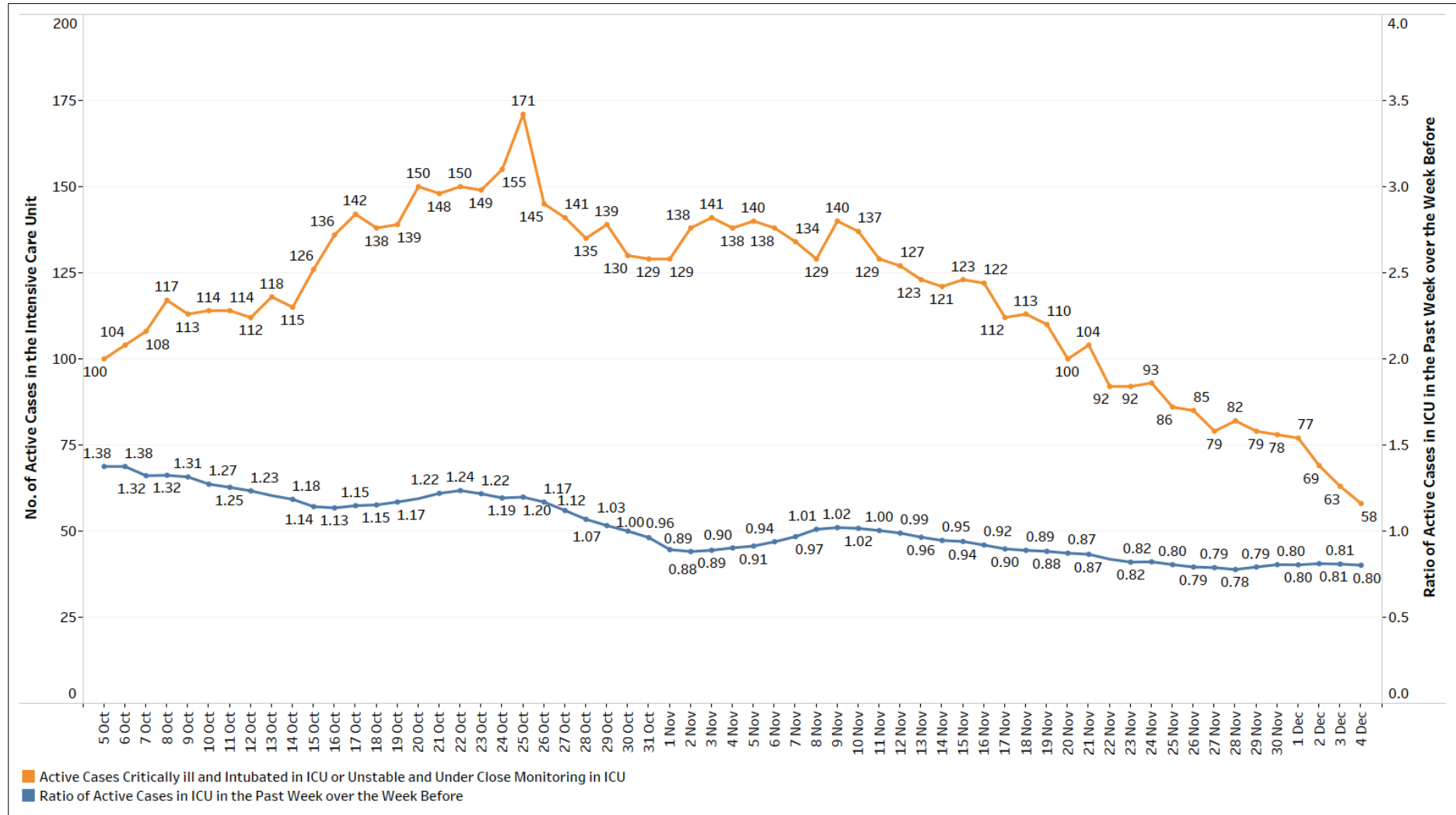


Figure 7: Deaths, Admissions into ICU and Discharges from ICU Among Local Cases by Notification Date

