

16 January 2022 Daily Report on COVID-19

Figure 1: Number of Local C+ Cases by Age (17 Nov – 16 Jan)

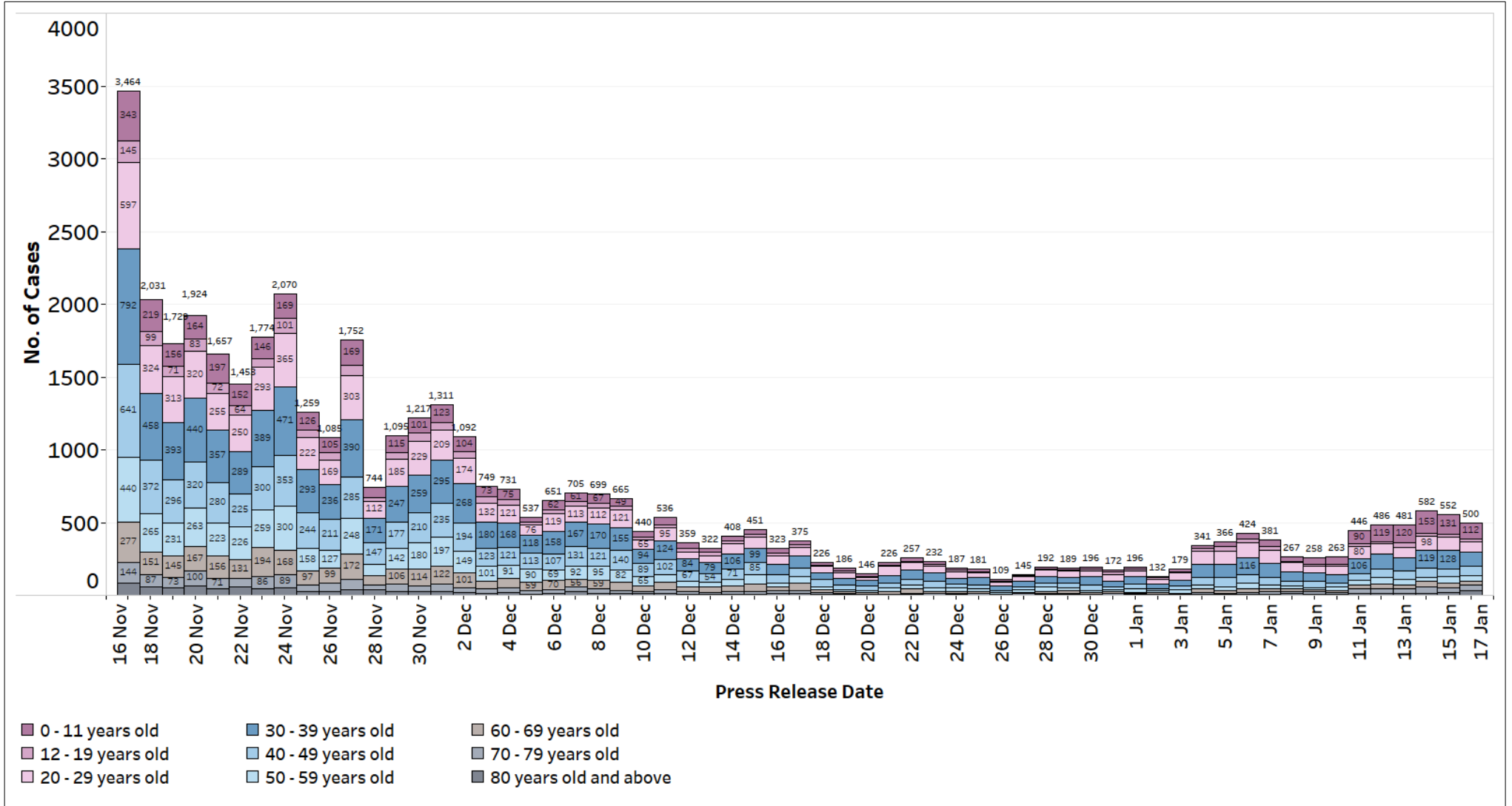
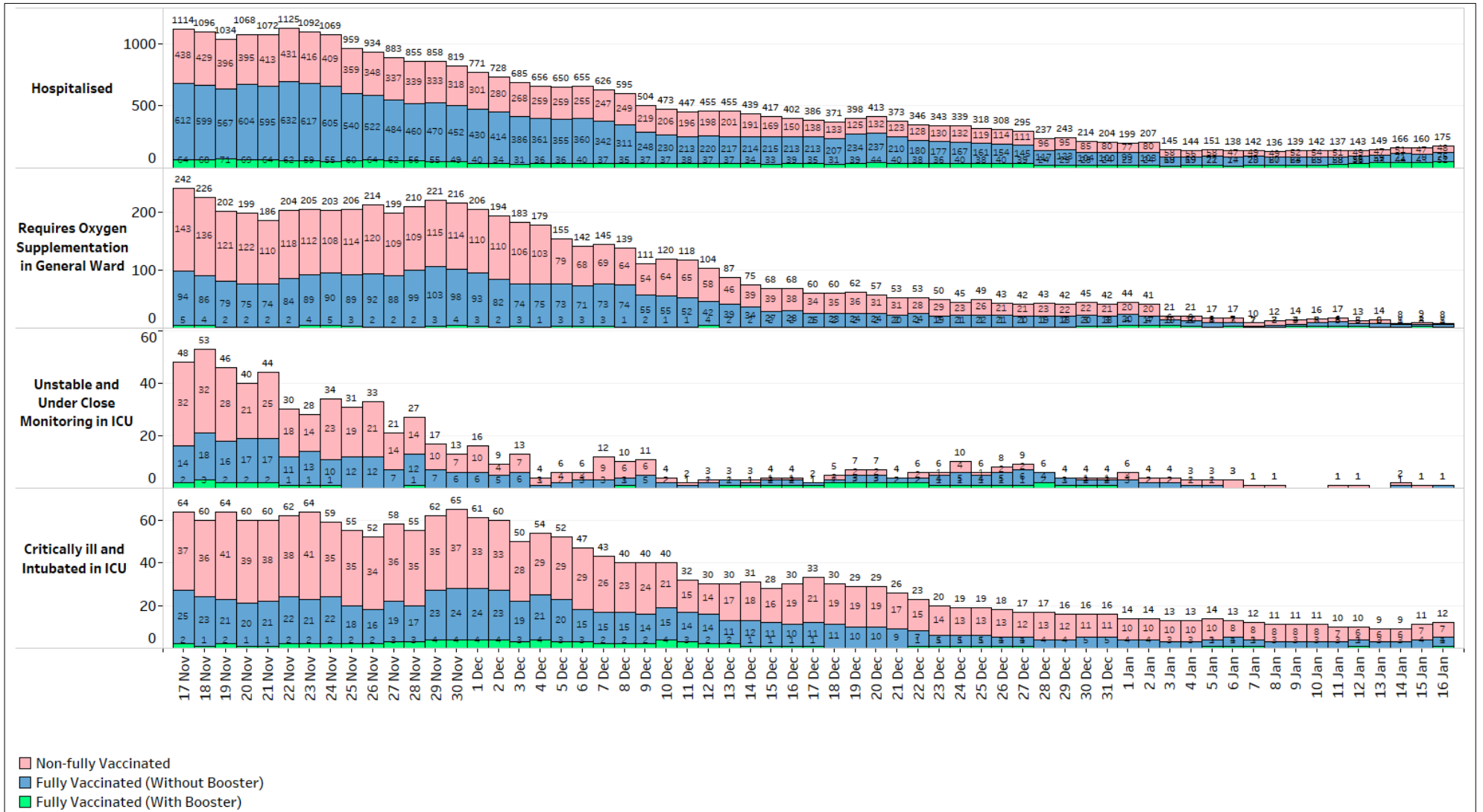


Figure 2: Active C+ Cases in ICU, Requiring Oxygen Supplementation or Hospitalised¹ (17 Nov – 16 Jan)



¹ Non-fully vaccinated status includes persons who are partially vaccinated and completely unvaccinated.

Figure 3: 7-Day Moving Average of Number of Active C+ Cases between 60 – 69, and 70 years old and Above that are Critically ill and Intubated in ICU, per 100,000 Population by Vaccination Status (17 Nov – 16 Jan)

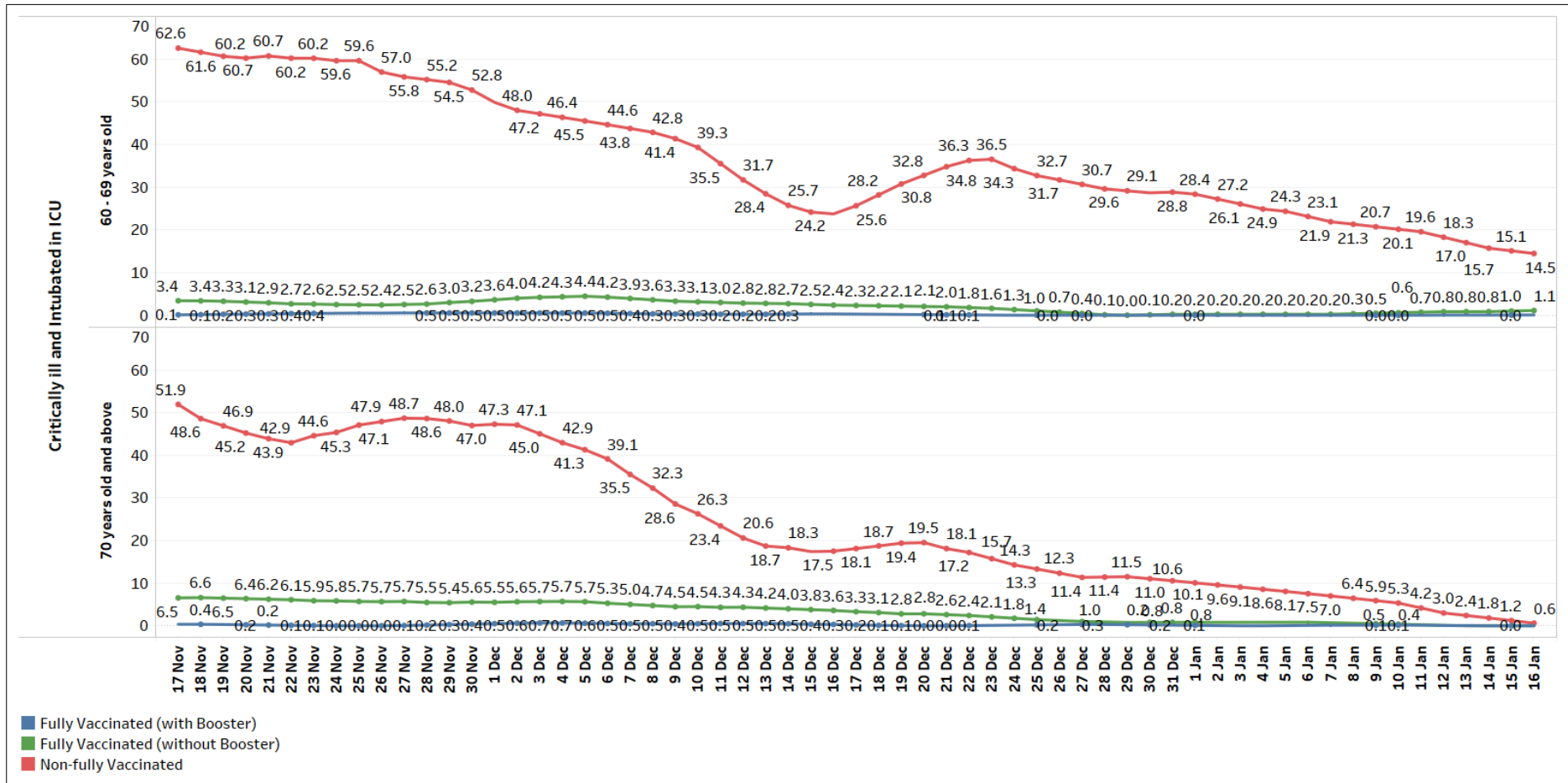


Figure 4: 7-Day Moving Average of Number of Deaths between 60 – 69, and 70 years old and Above, per 100,000 Population by Vaccination Status (17 Nov – 16 Jan)

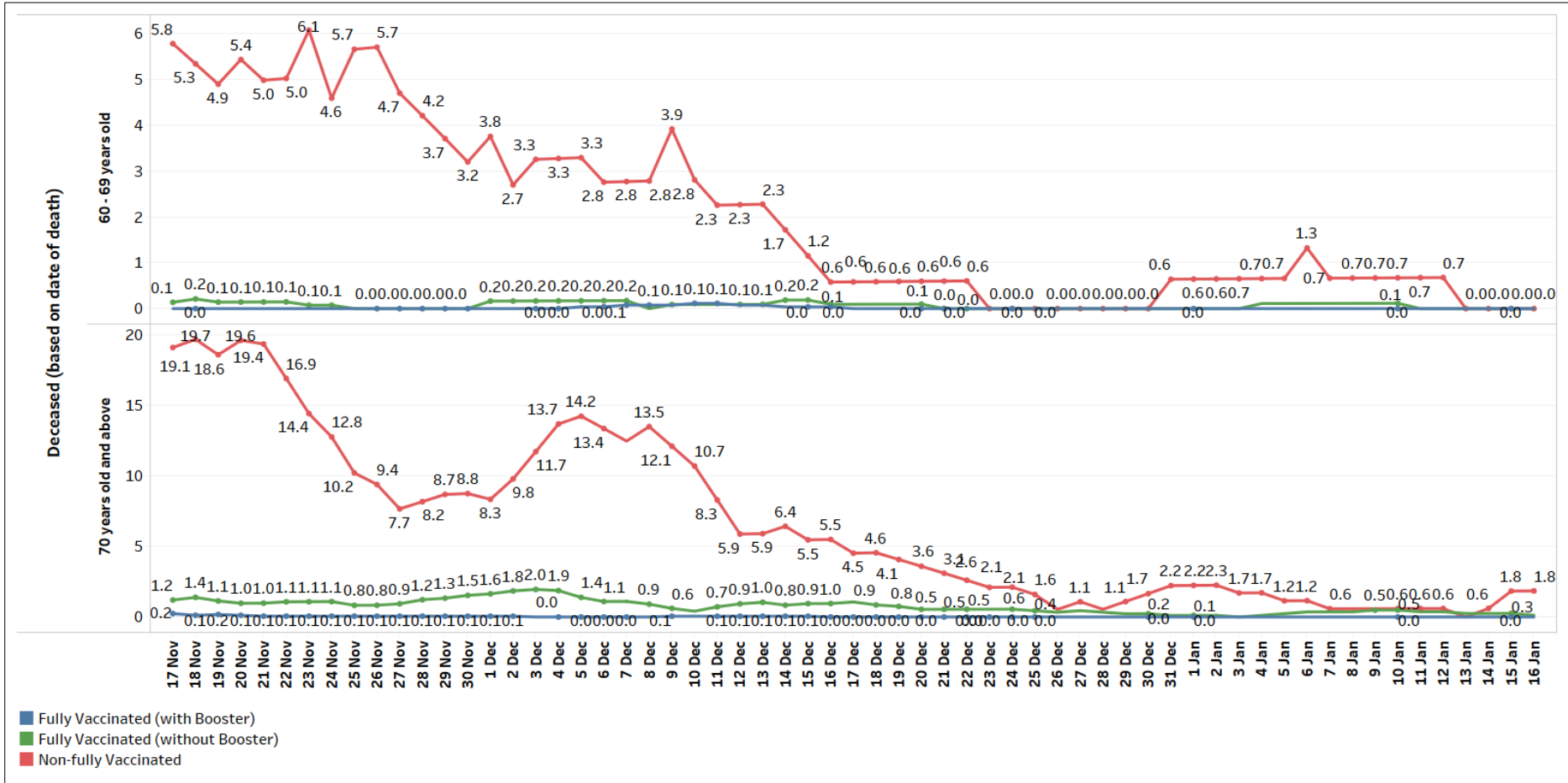


Figure 5: General Wards O2 + ICU (Intubated + Close Monitoring), Number of C+ Cases and Week-on-Week Ratio of C+ Cases (17 Nov – 16 Jan)

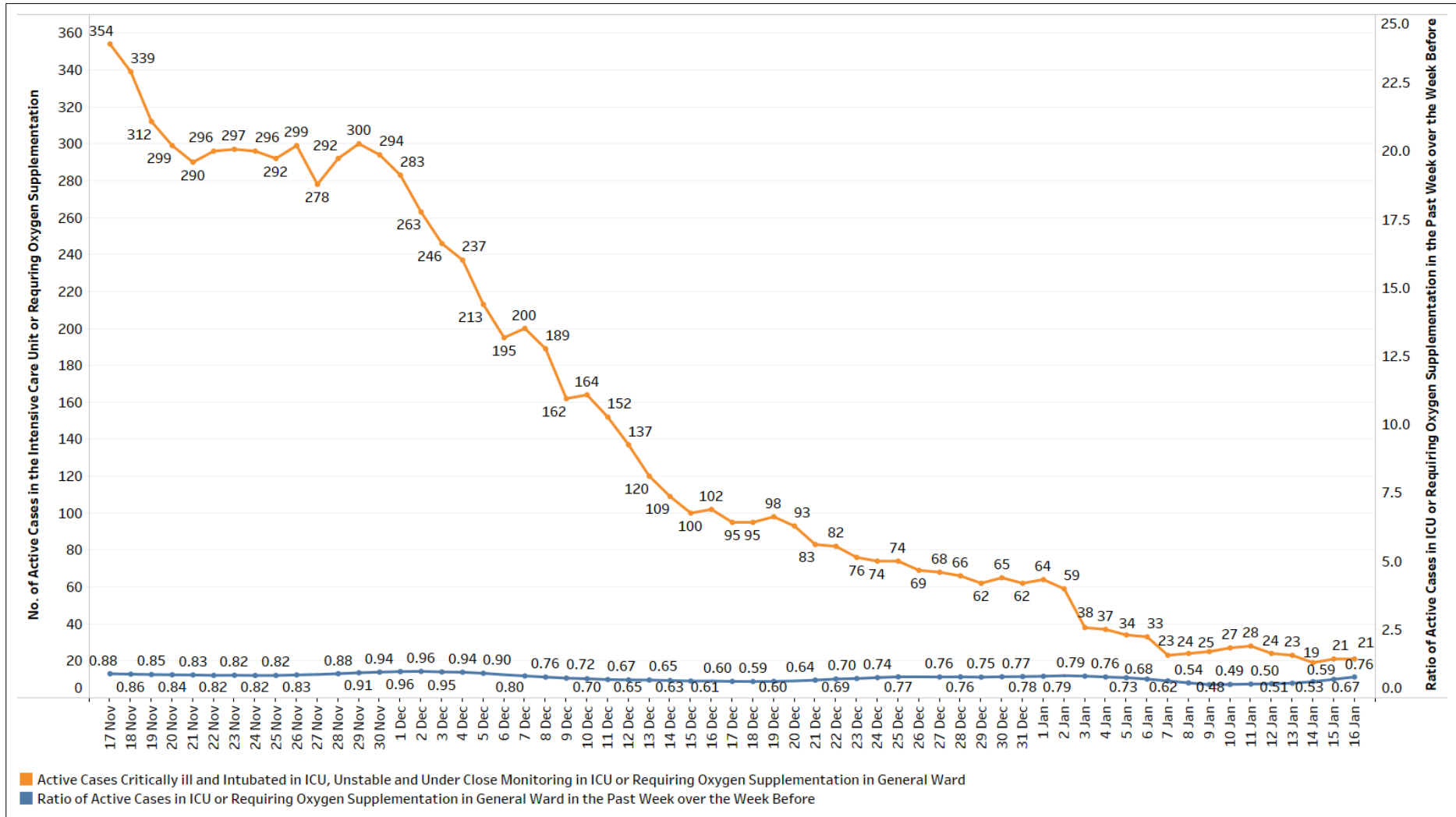


Figure 6: ICU (Intubated + Close Monitoring), Number of C+ Cases and Week-on-Week Ratio of C+ Cases (17 Nov – 16 Jan)

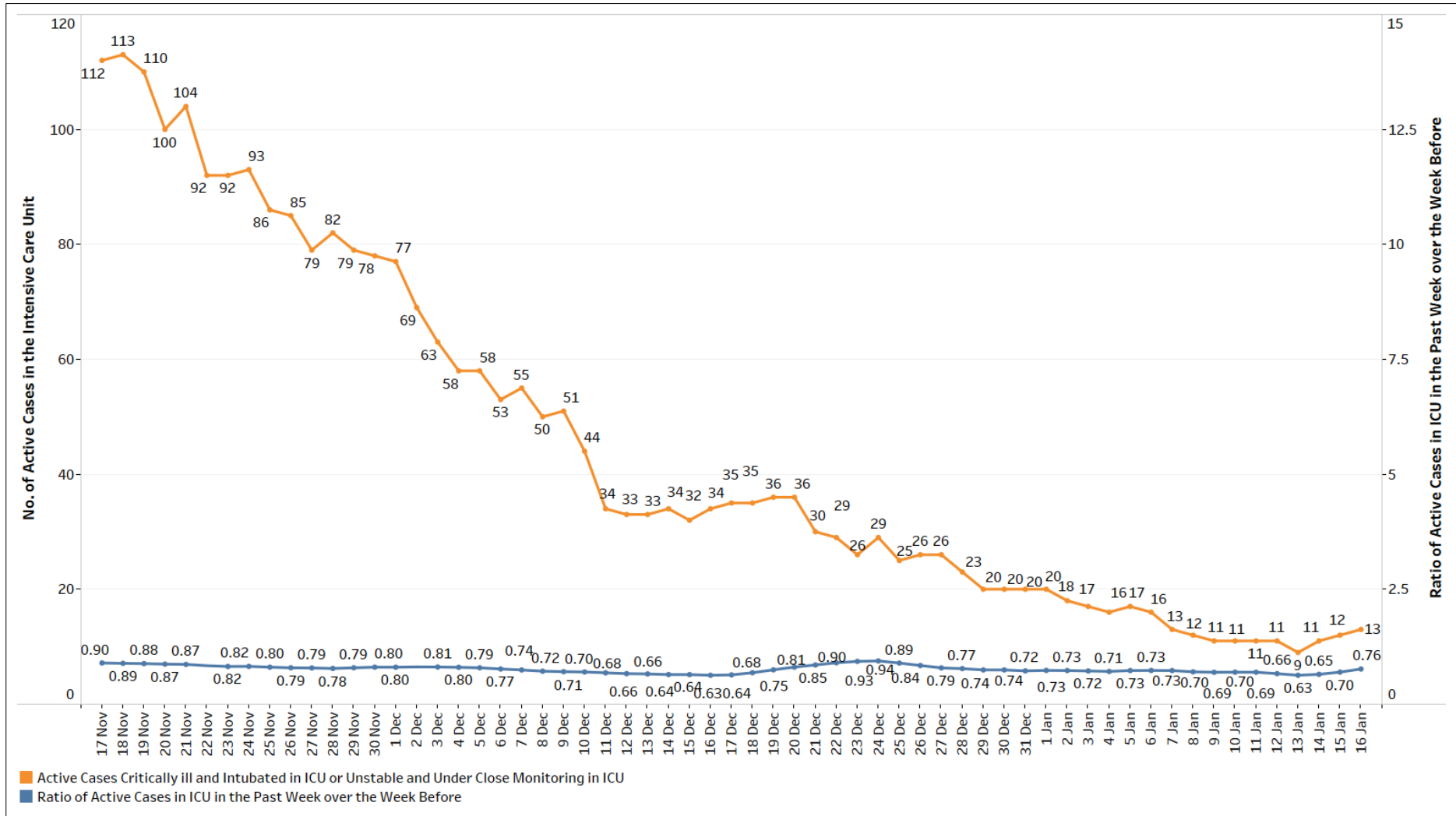


Figure 7: Deaths, Admissions into ICU and Discharges from ICU Among Local C+ Cases by Notification Date

