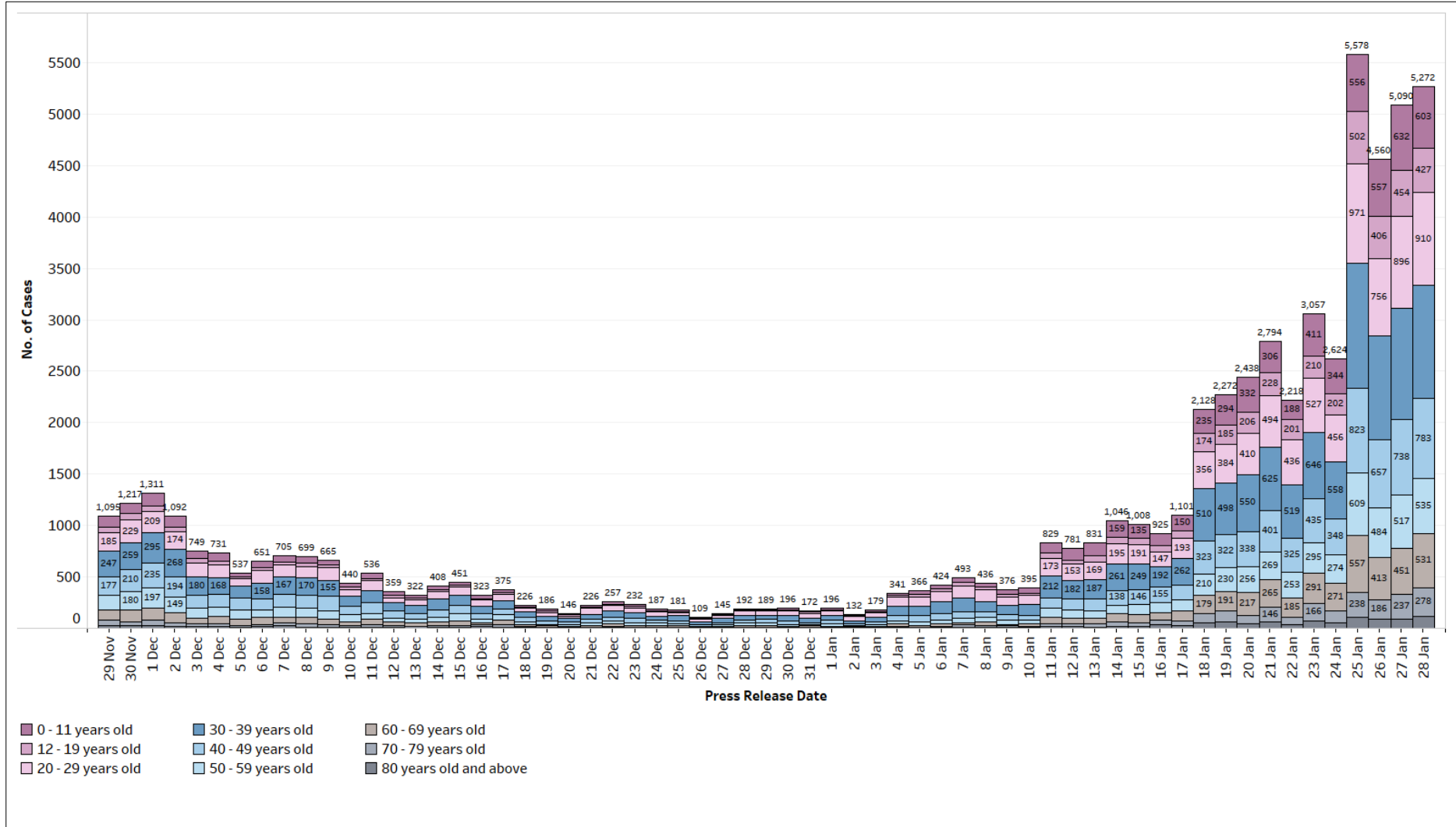
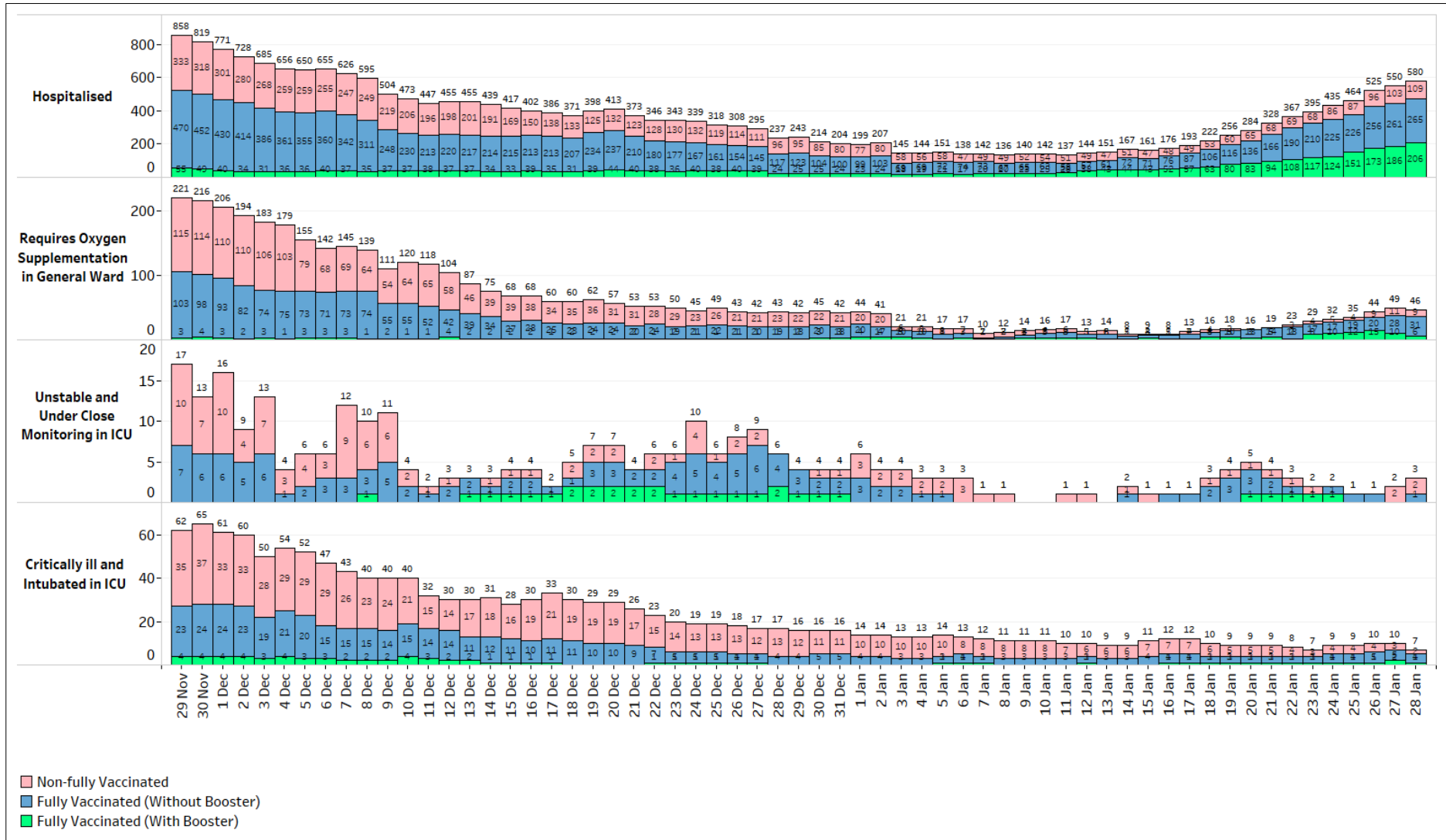


## 28 January 2022 Daily Report on COVID-19

**Figure 1:** Number of Local PCR+ and ART+ Cases by Age (29 Nov – 28 Jan)

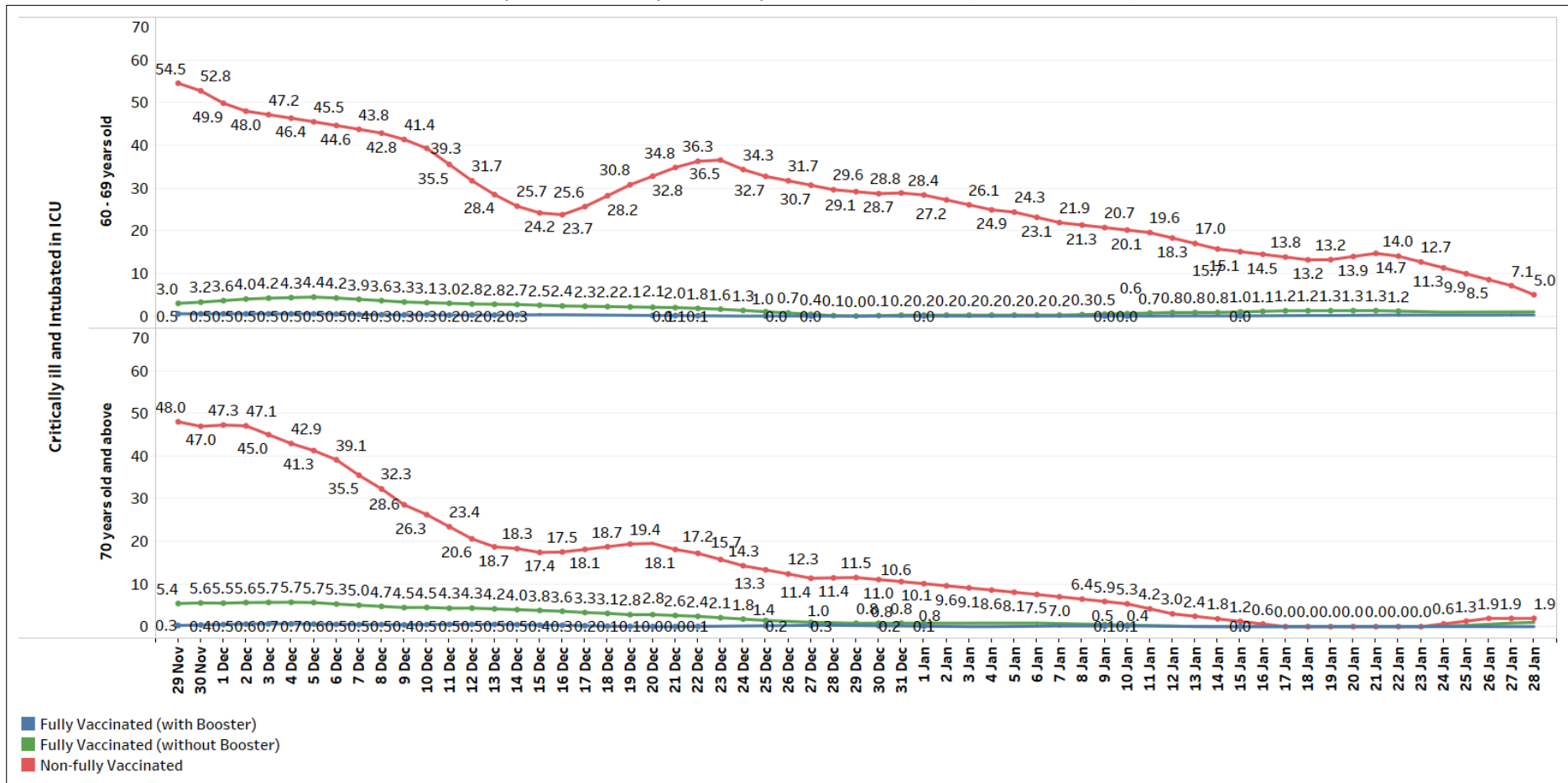


**Figure 2:** Active PCR+ and ART+ Cases in ICU, Requiring Oxygen Supplementation or Hospitalised<sup>1</sup> (29 Nov – 28 Jan)

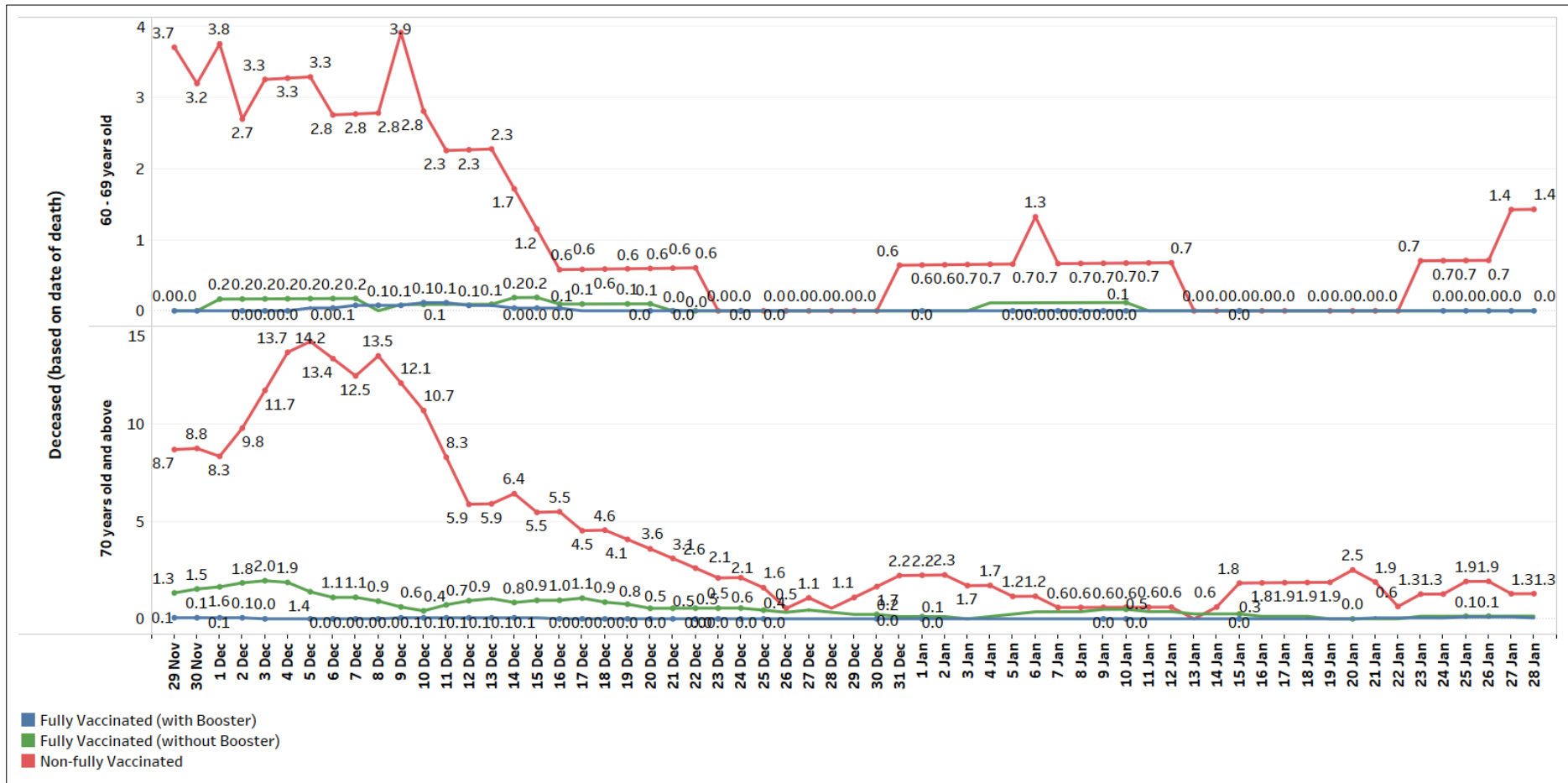


<sup>1</sup> Non-fully vaccinated status includes persons who are partially vaccinated and completely unvaccinated.

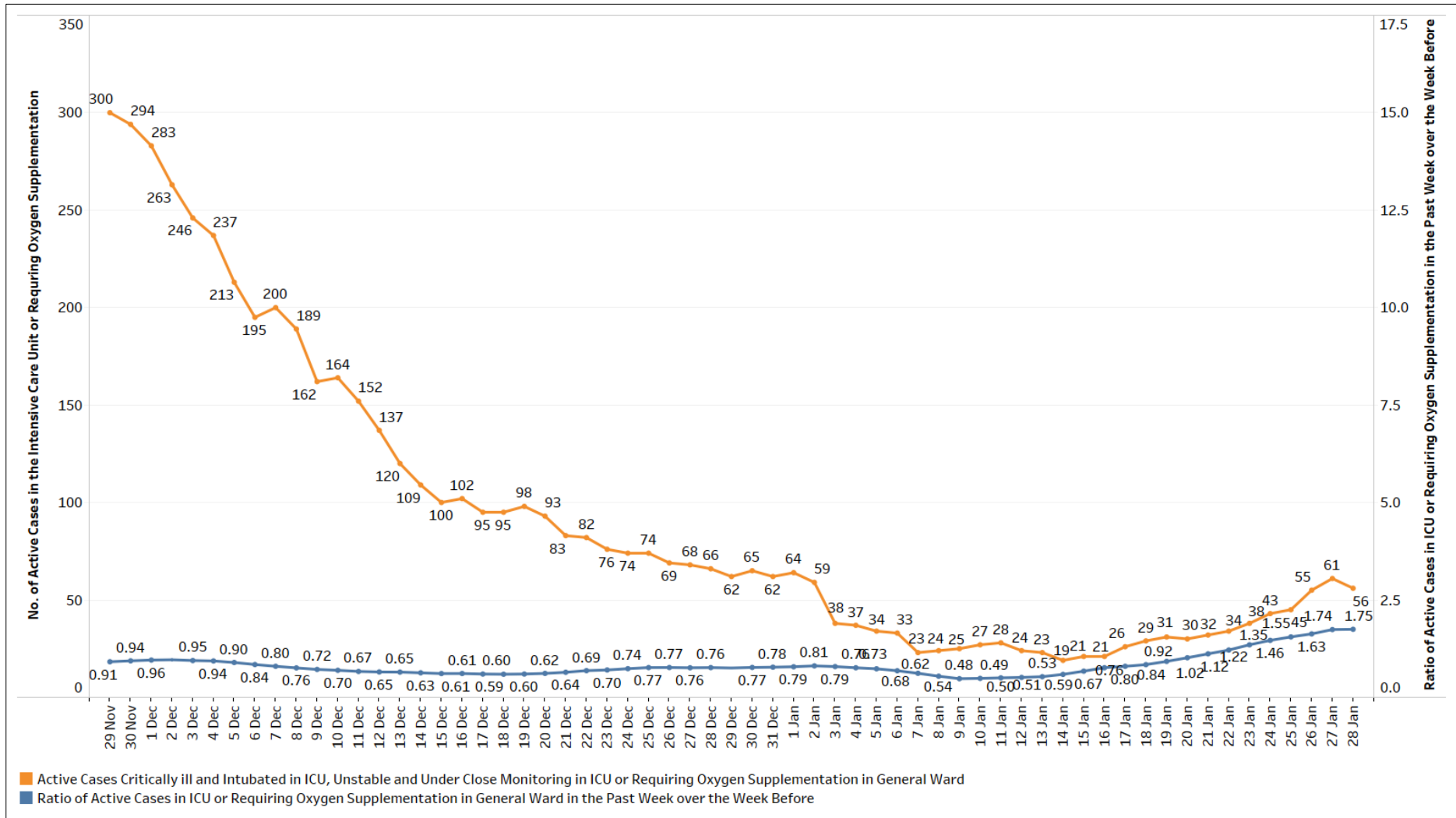
**Figure 3: 7-Day Moving Average of Number of Active PCR+ and ART+ Cases between 60 – 69, and 70 years old and Above that are Critically ill and Intubated in ICU, per 100,000 Population by Vaccination Status (29 Nov – 28 Jan)**



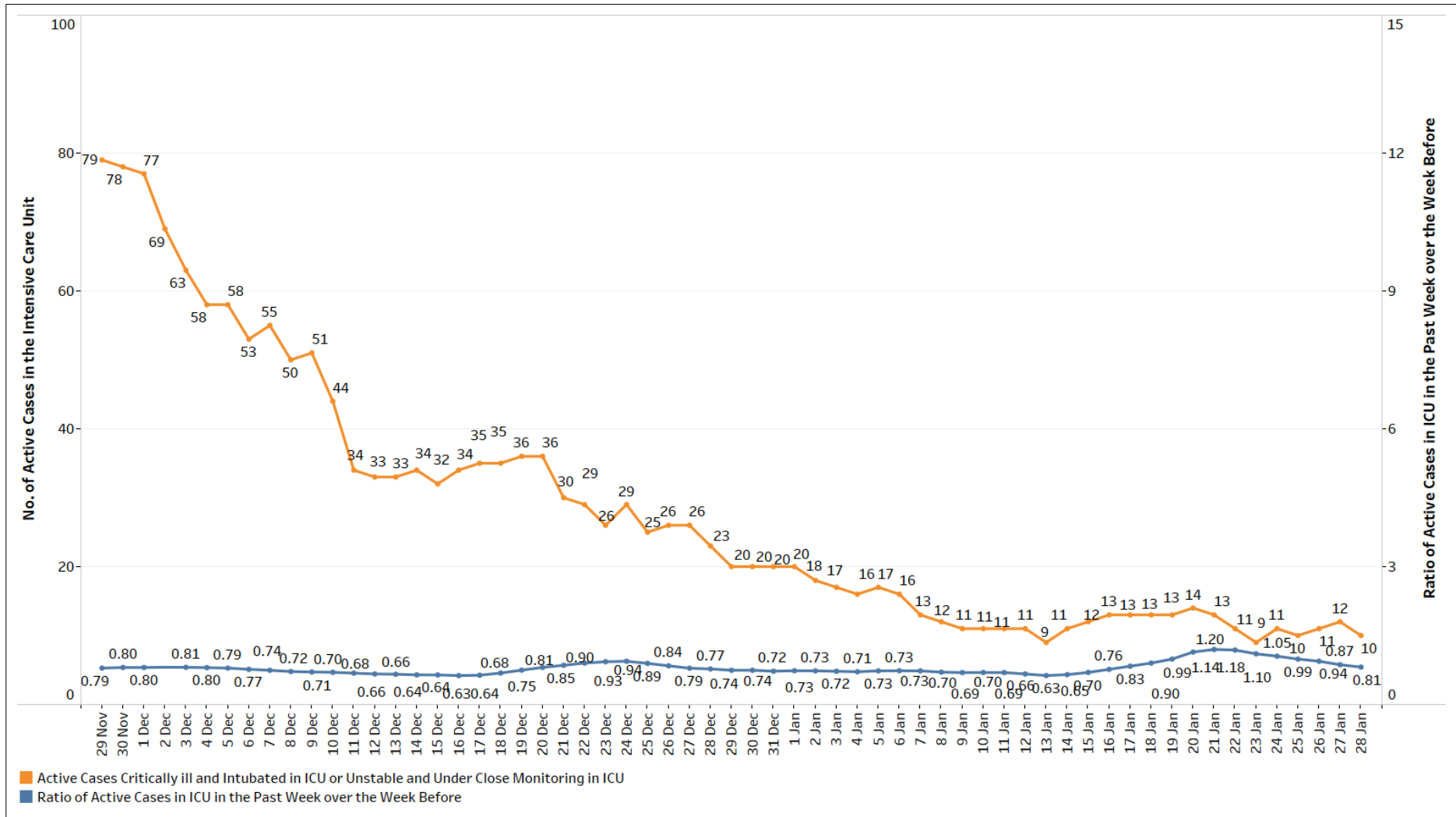
**Figure 4:** 7-Day Moving Average of Number of Deaths Among PCR+ and ART+ Cases between 60 – 69, and 70 years old and Above, per 100,000 Population by Vaccination Status (29 Nov – 28 Jan)



**Figure 5:** General Wards O2 + ICU (Intubated + Close Monitoring), Number of PCR+ and ART+ Cases and Week-on-Week Ratio of PCR+ and ART+ Cases (29 Nov – 28 Jan)



**Figure 6:** ICU (Intubated + Close Monitoring), Number of PCR+ and ART+ Cases and Week-on-Week Ratio of PCR+ and ART+ Cases (29 Nov – 28 Jan)



**Figure 7:** Deaths, Admissions into ICU and Discharges from ICU  
Among Local PCR+ and ART+ Cases by Notification Date

