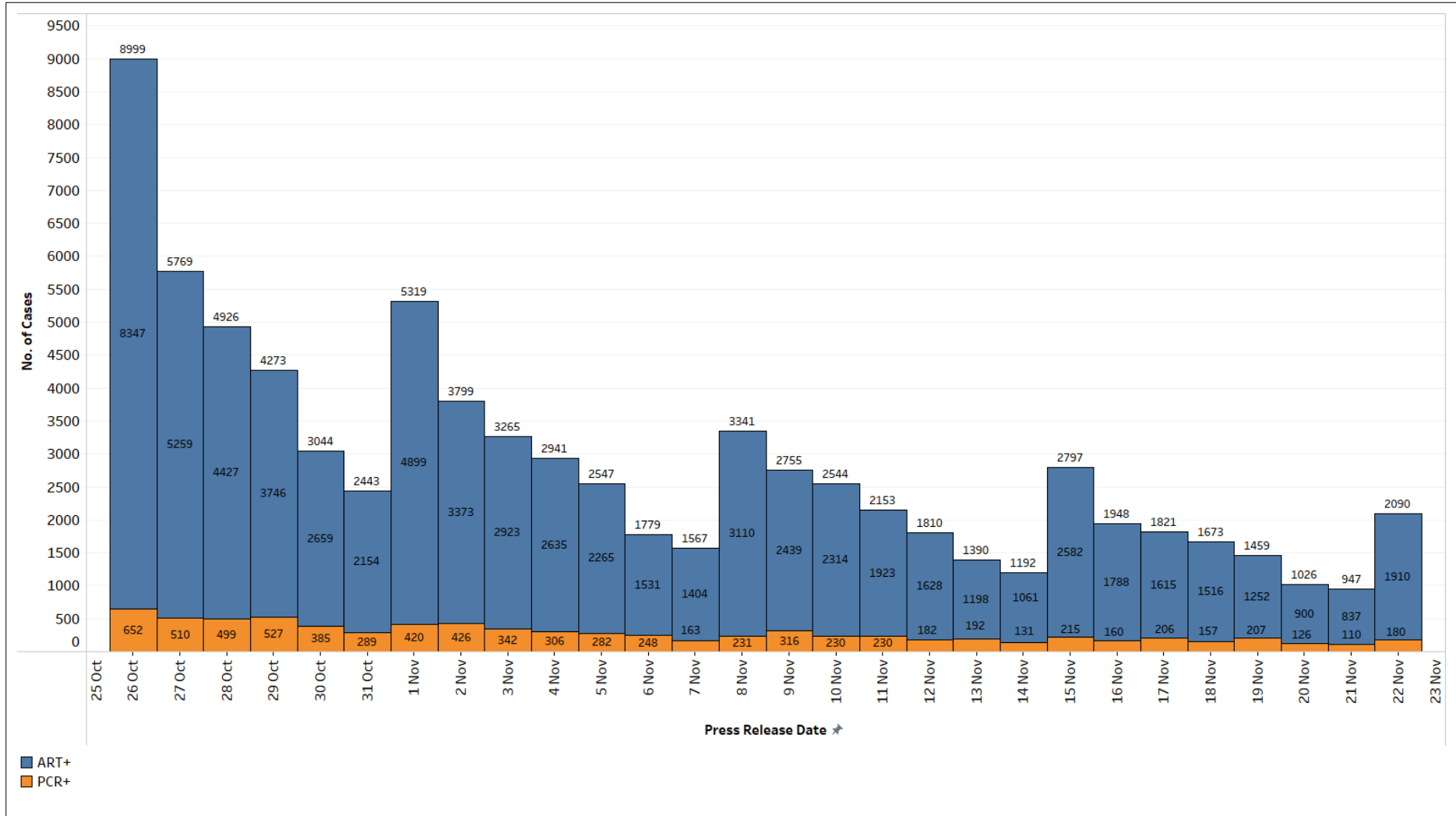
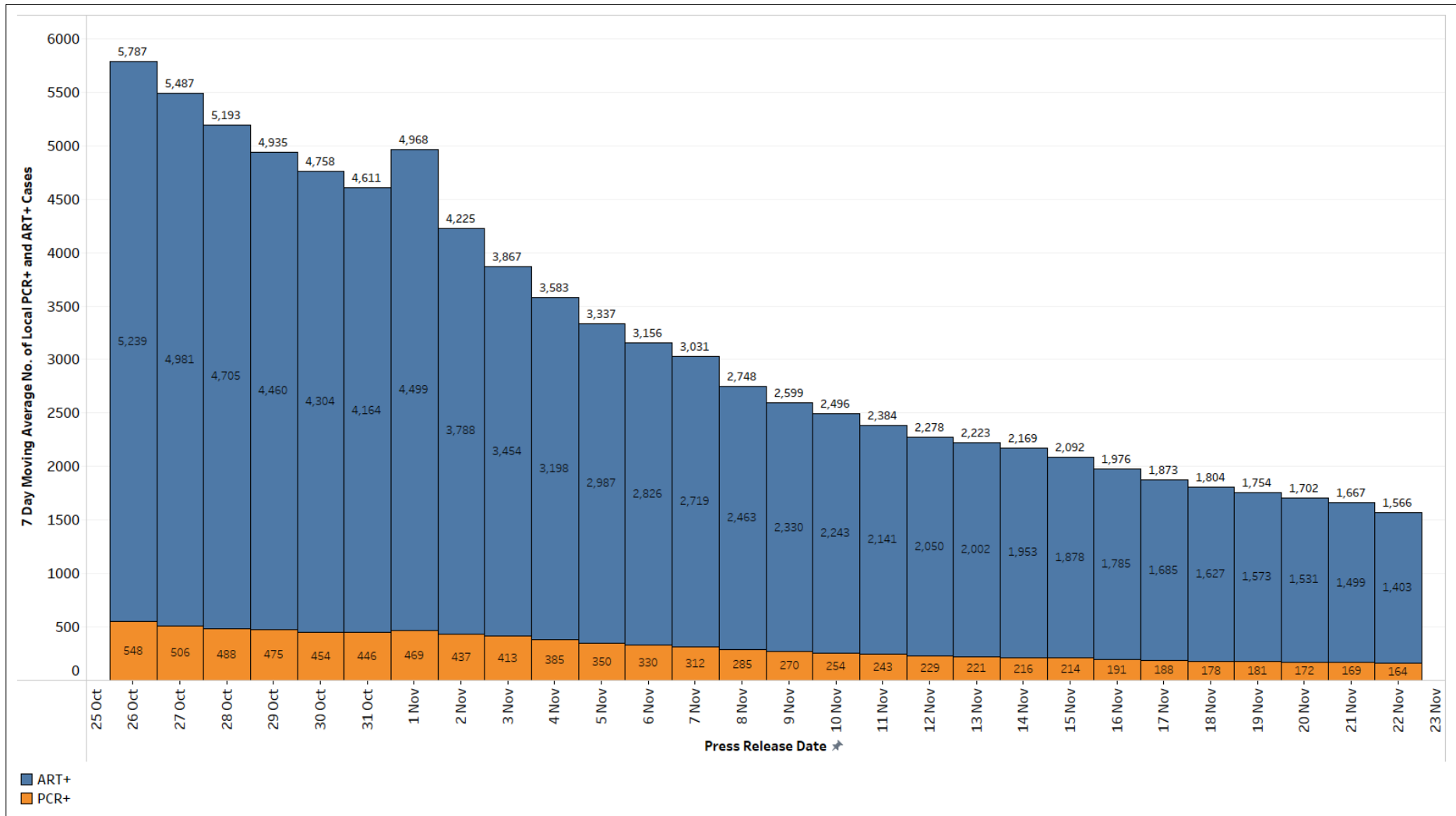


### 23 November 2022 Weekly Report on COVID-19

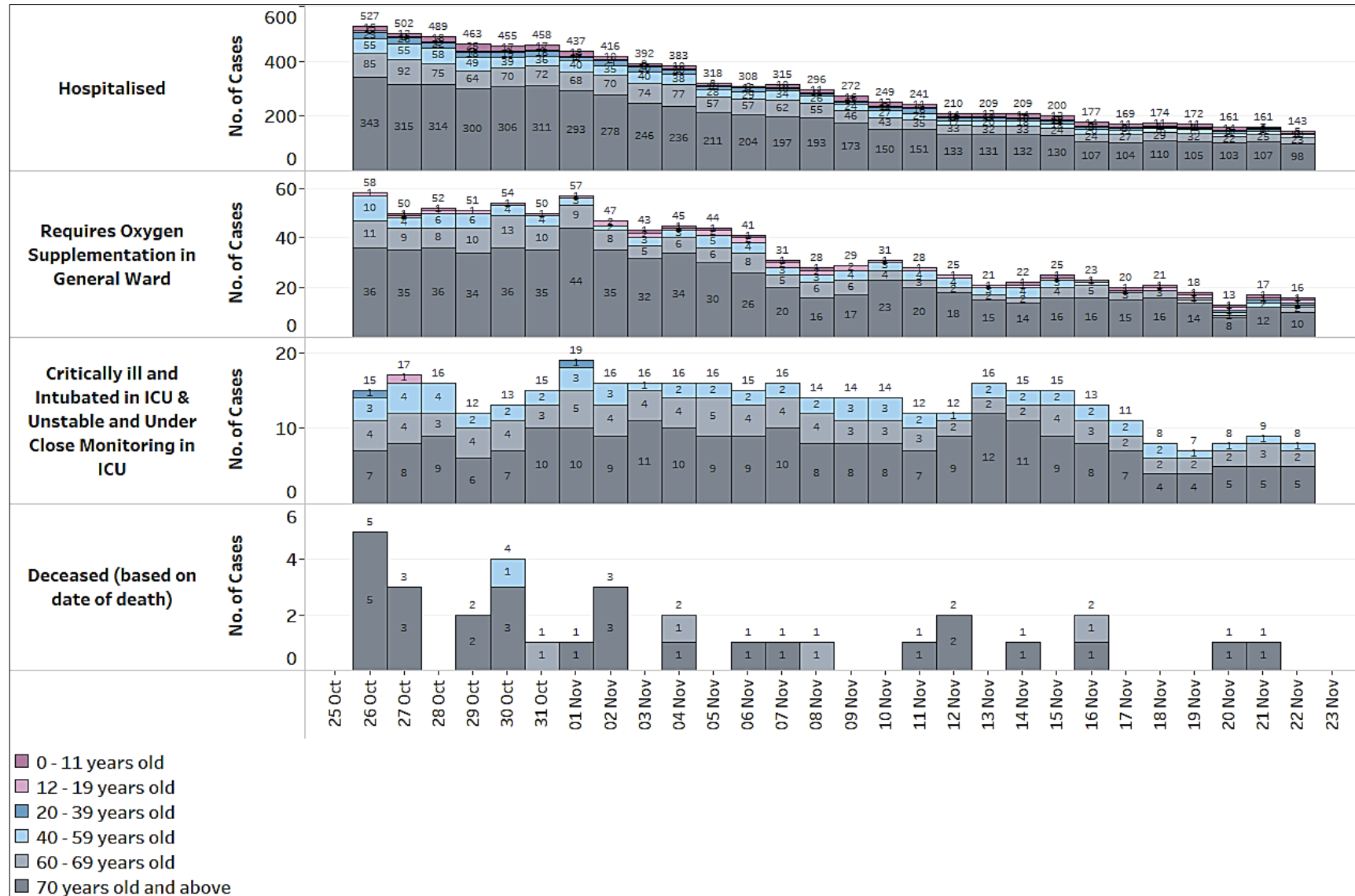
**Figure 1:** Daily Number of Local Cases (26 Oct – 22 Nov)



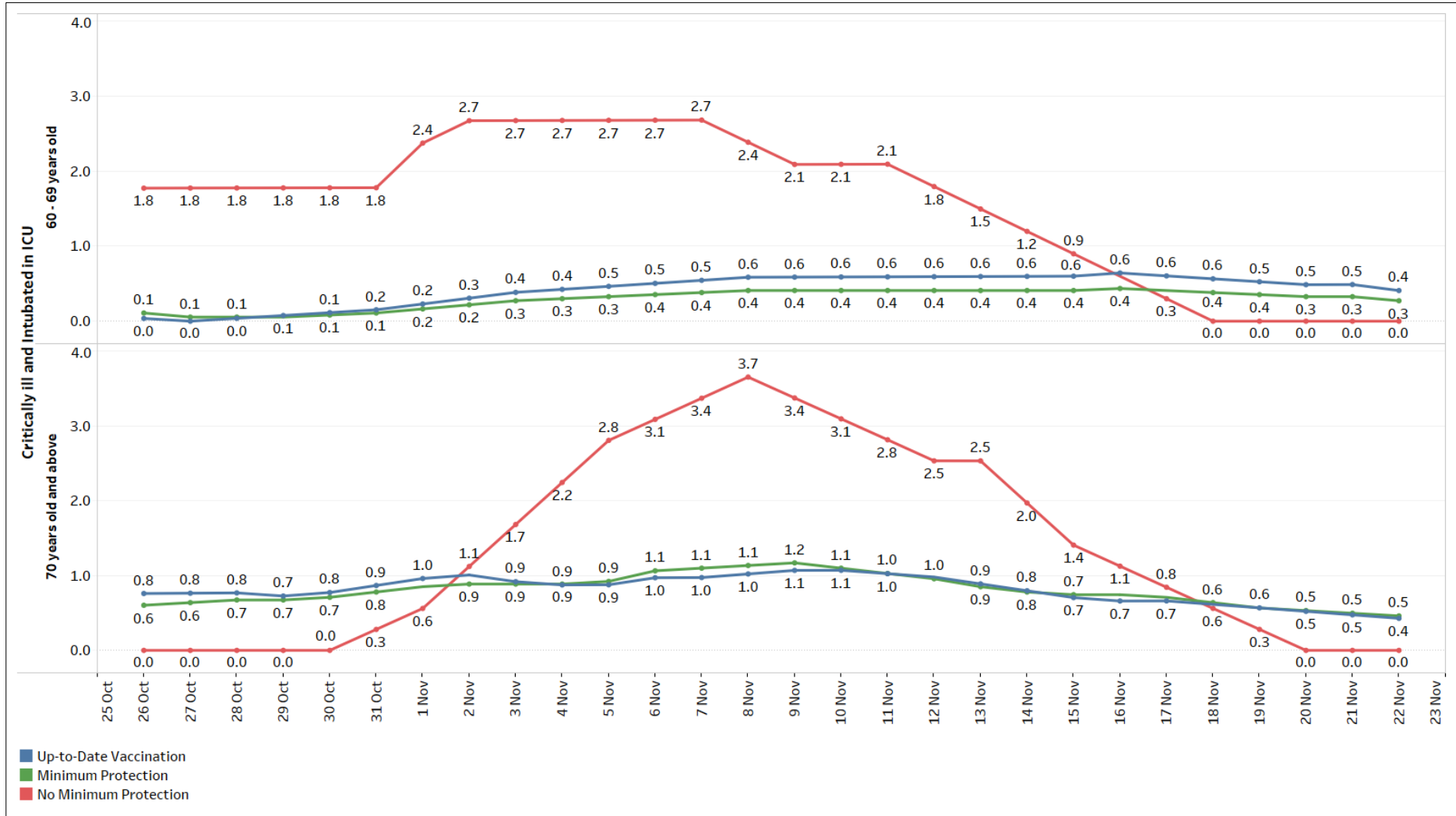
**Figure 2: 7-day Moving Average Local Cases by day (26 Oct – 22 Nov)**



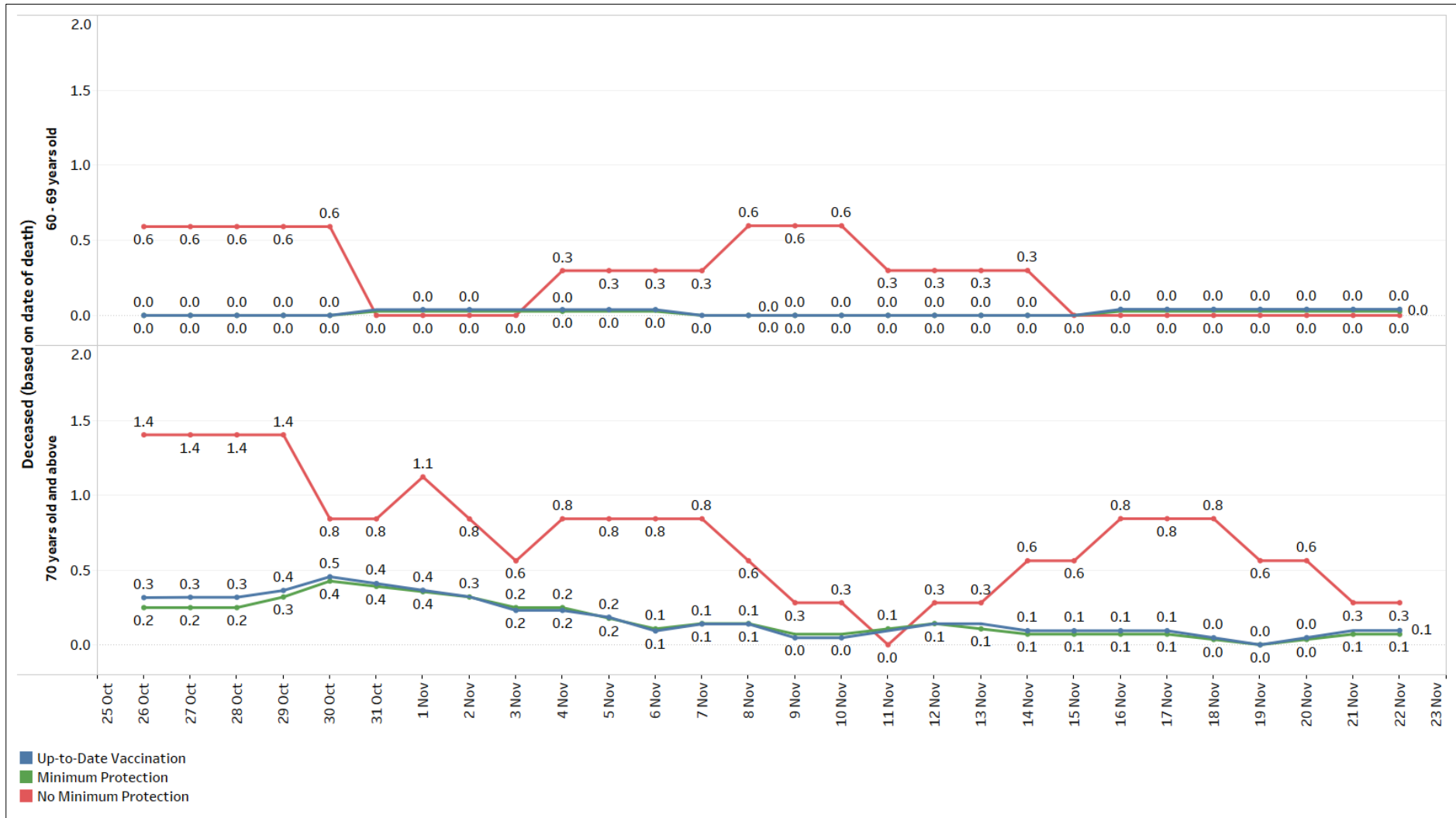
**Figure 3: COVID-19 Patients Needing Oxygen Supplementation, ICU Care or Died, by Age Groups (26 Oct – 22 Nov)**



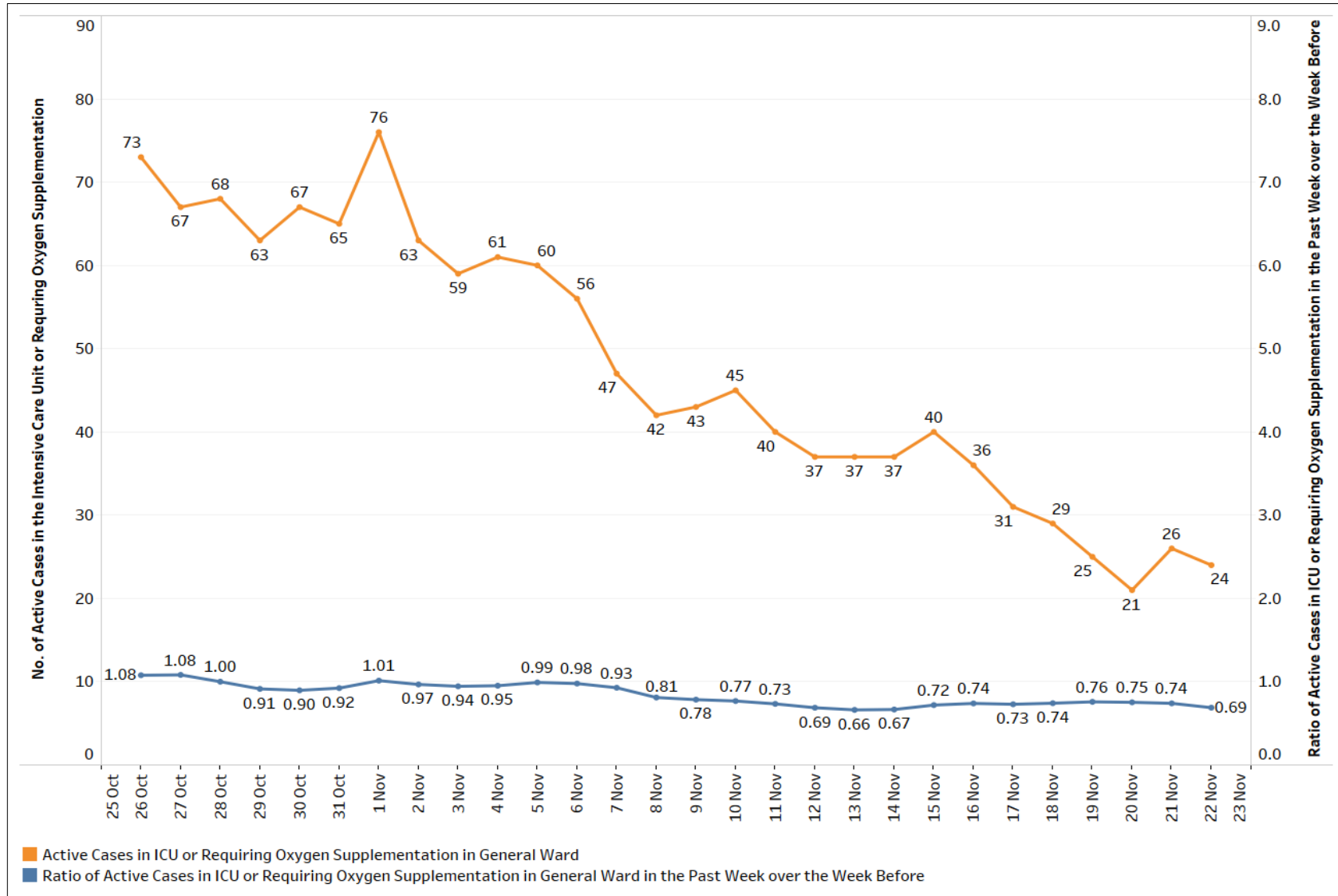
**Figure 4:** 7-Day Moving Average Number of Active Cases between 60 – 69, and 70 years old and above that are Critically ill and Intubated in ICU, per 100,000 Population by Vaccination Status (26 Oct – 22 Nov)



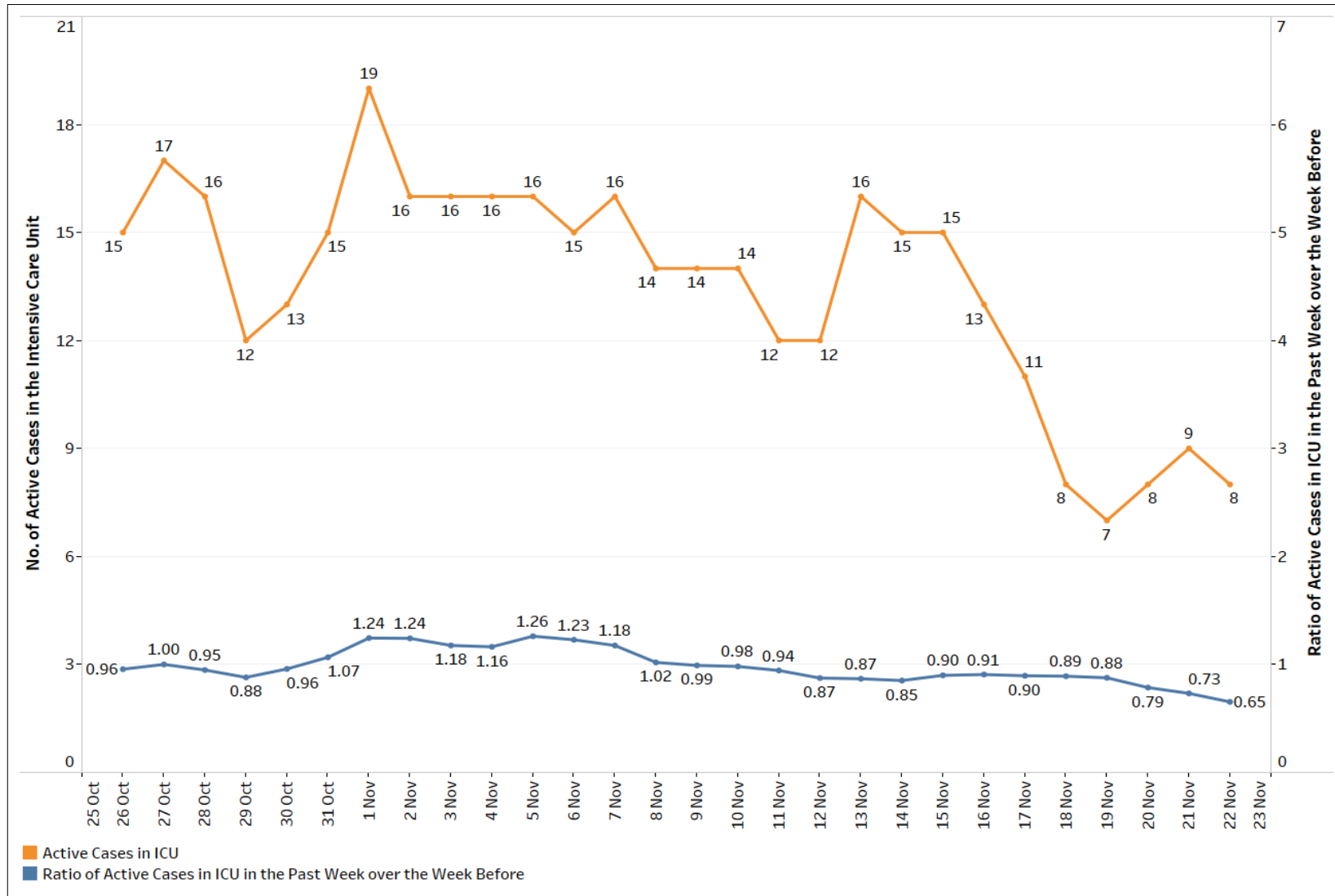
**Figure 5: 7-Day Moving Average Number of Deaths Among Cases between 60 – 69, and 70 years old and above, per 100,000 Population by Vaccination Status (26 Oct – 22 Nov)**



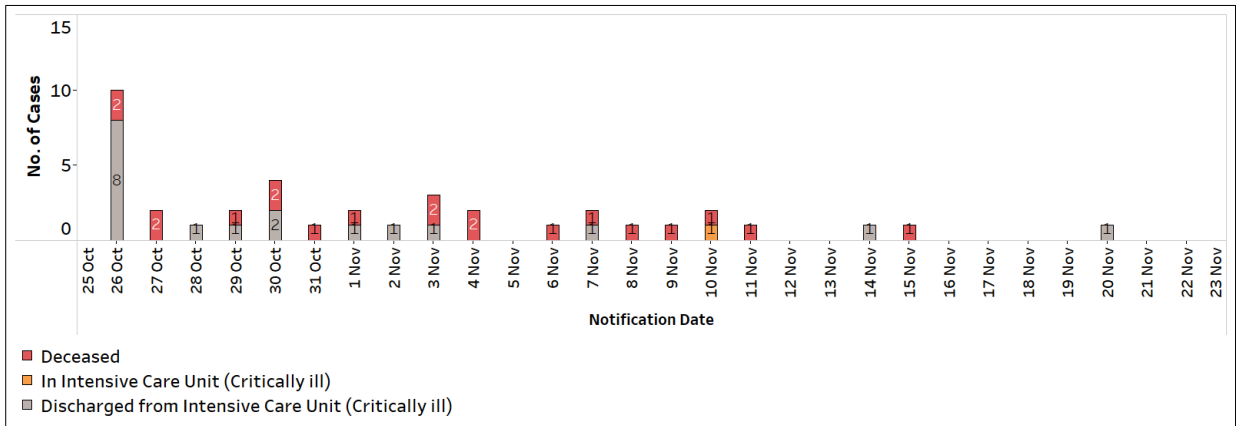
**Figure 6:** Number and Week-on-Week Ratio of General Wards O2 + ICU (Intubated + Close Monitoring) Cases (26 Oct – 22 Nov)



**Figure 7:** Number and Week-on-Week Ratio of ICU (Intubated + Close Monitoring) Cases (26 Oct – 22 Nov)



**Figure 8:** Deaths, Admissions into ICU and Discharges from ICU Among Local Cases by Notification Date (26 Oct – 22 Nov)





**Figure 9:** COVID-19 Cases and Virus Level in Wastewater over time (1 Jul 2021 – 20 Nov 2022)  
 The line graph (in black) reflects the daily 3-day moving average (3DMA) of the wastewater COVID-19 virus levels from all testing sites in the community. The stacked area chart (in pink) reflects the daily number of COVID-19 cases reported in the community.

