

28 December 2022 Weekly Report on COVID-19

Figure 1: Daily Number of Local Cases (30 Nov – 27 Dec)

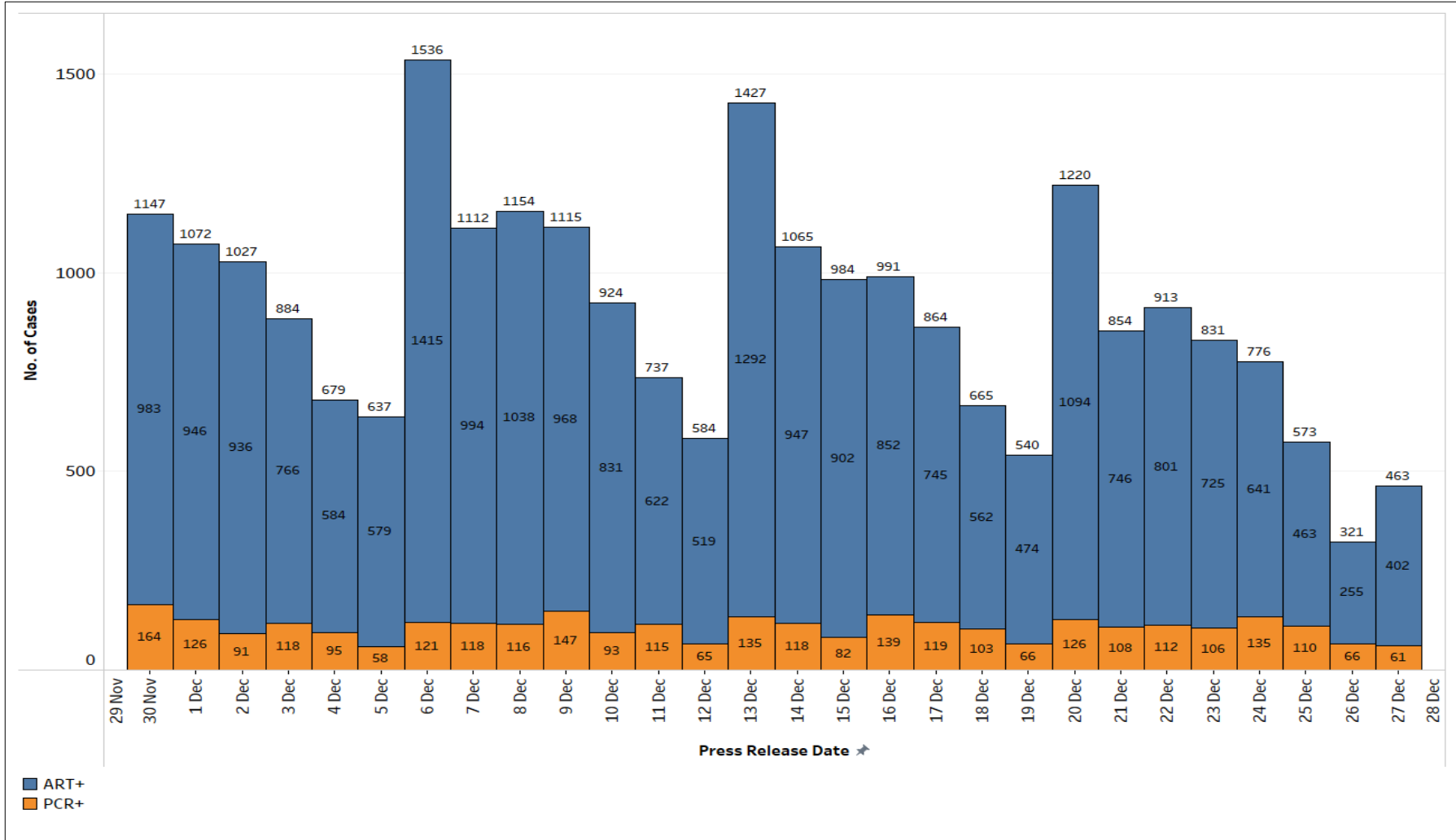


Figure 2: 7-day Moving Average Local Cases by day (30 Nov – 27 Dec)

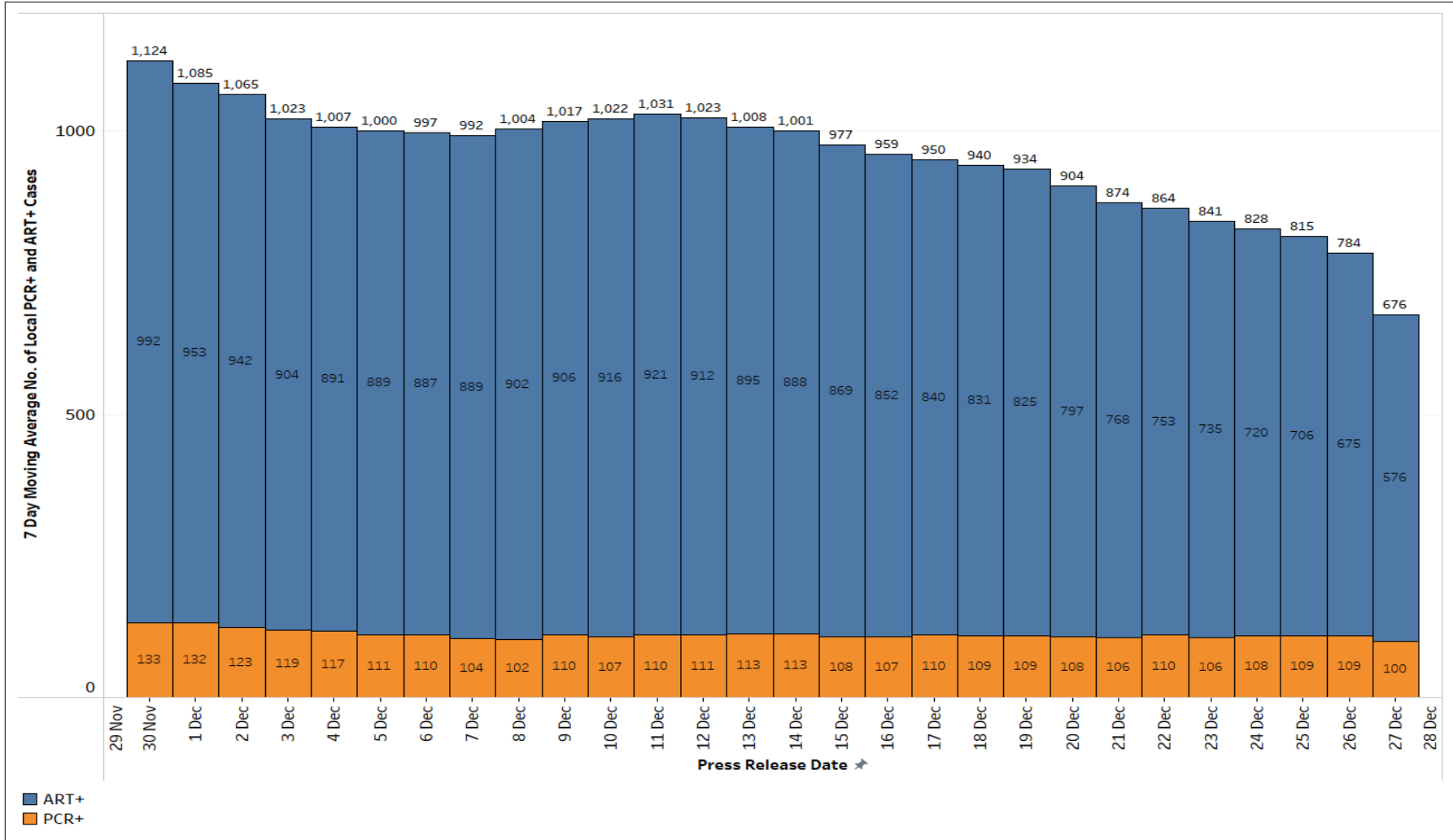


Figure 3: COVID-19 Patients Needing Oxygen Supplementation, ICU Care or Died, by Age Groups (30 Nov – 27 Dec)

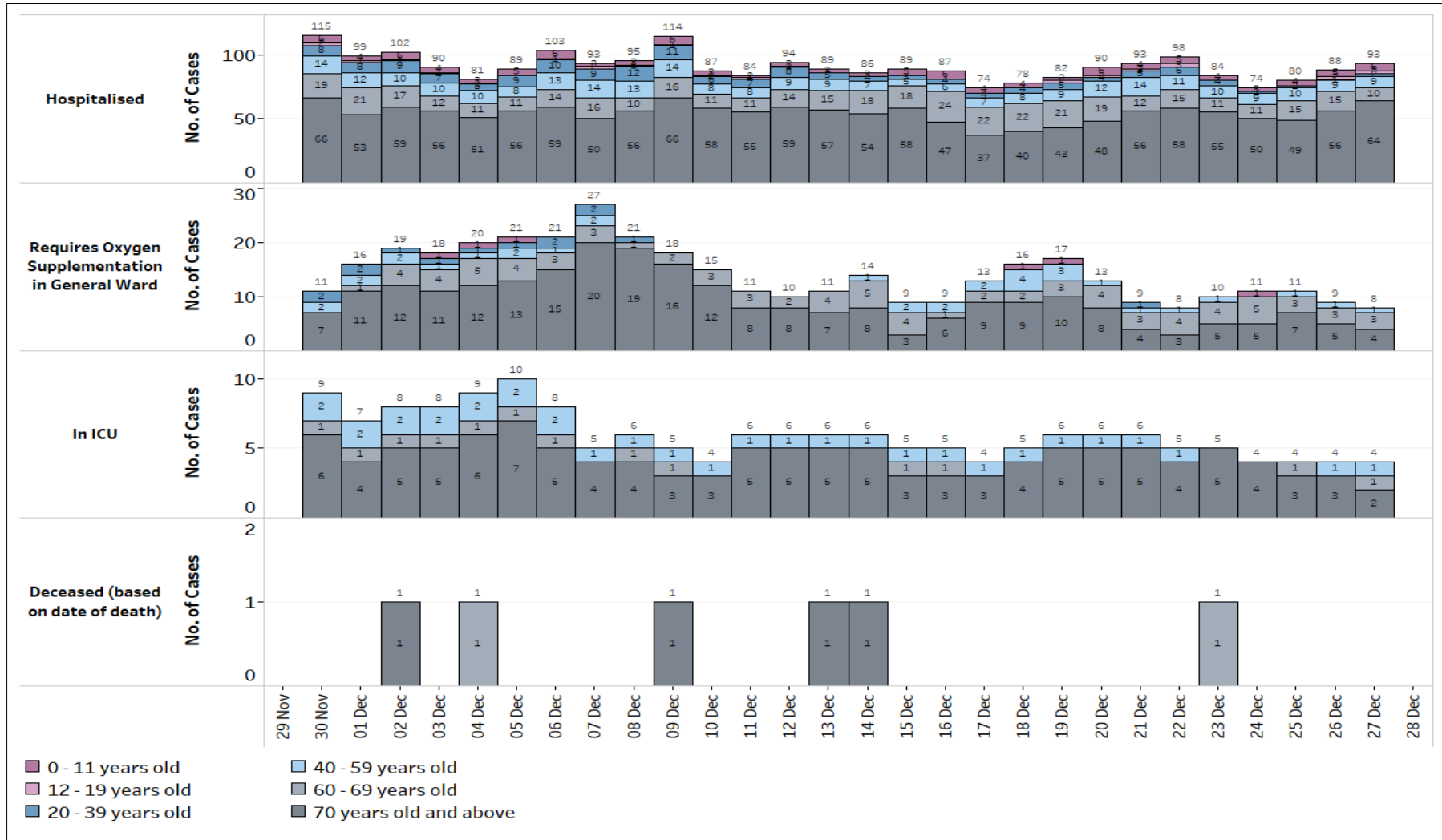


Figure 4: 7-Day Moving Average Number of Active Cases between 60 – 69, and 70 years old and above that are Critically ill and Intubated in ICU, per 100,000 Population by Vaccination Status (30 Nov – 27 Dec)

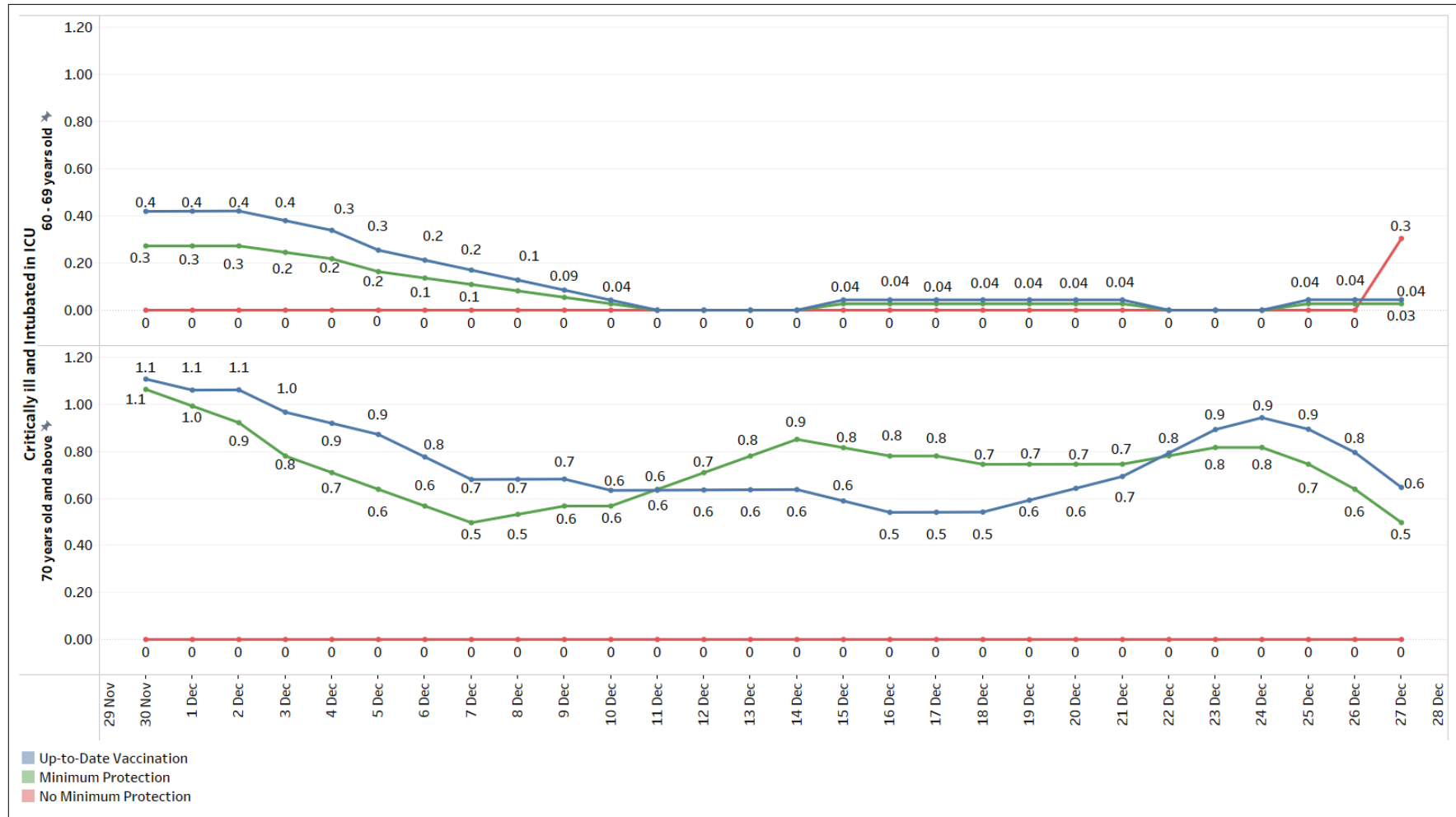


Figure 5: 7-Day Moving Average Number of Deaths Among Cases between 60 – 69, and 70 years old and above, per 100,000 Population by Vaccination Status (30 Nov – 27 Dec)

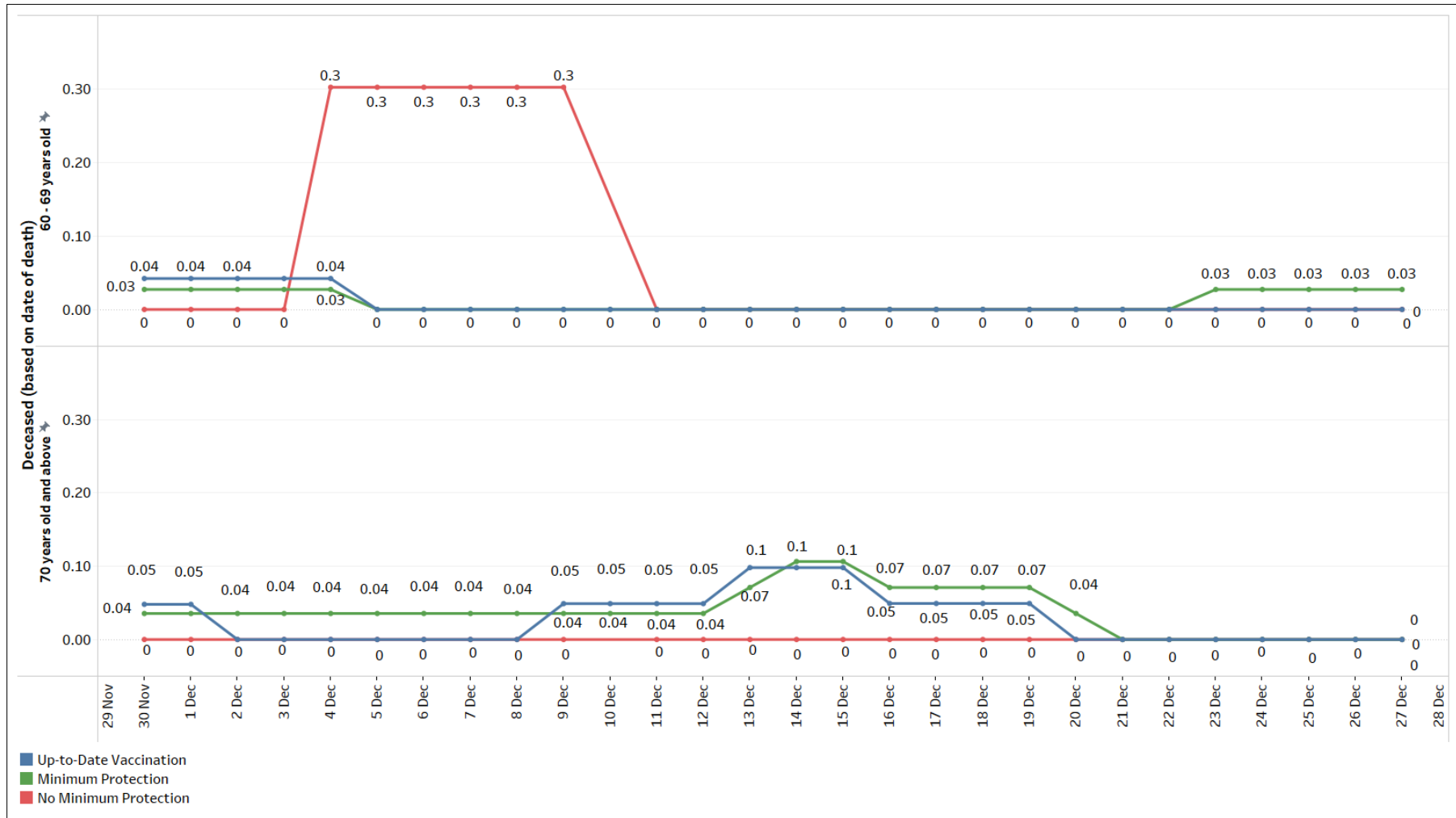


Figure 6: Number and Week-on-Week Ratio of General Wards O2 + ICU (Intubated + Close Monitoring) Cases (30 Nov – 27 Dec)

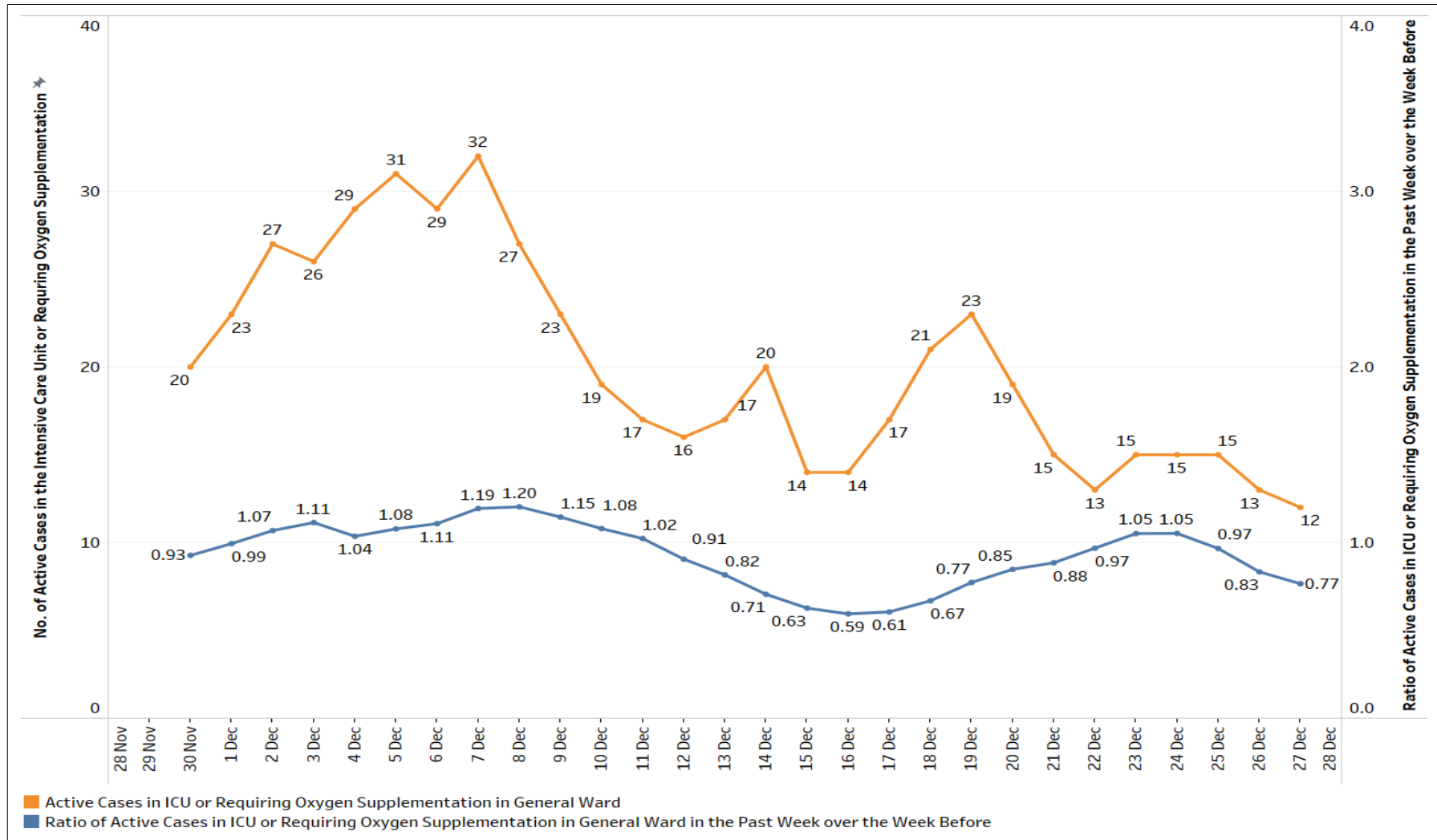


Figure 7: Number and Week-on-Week Ratio of ICU (Intubated + Close Monitoring) Cases (30 Nov – 27 Dec)

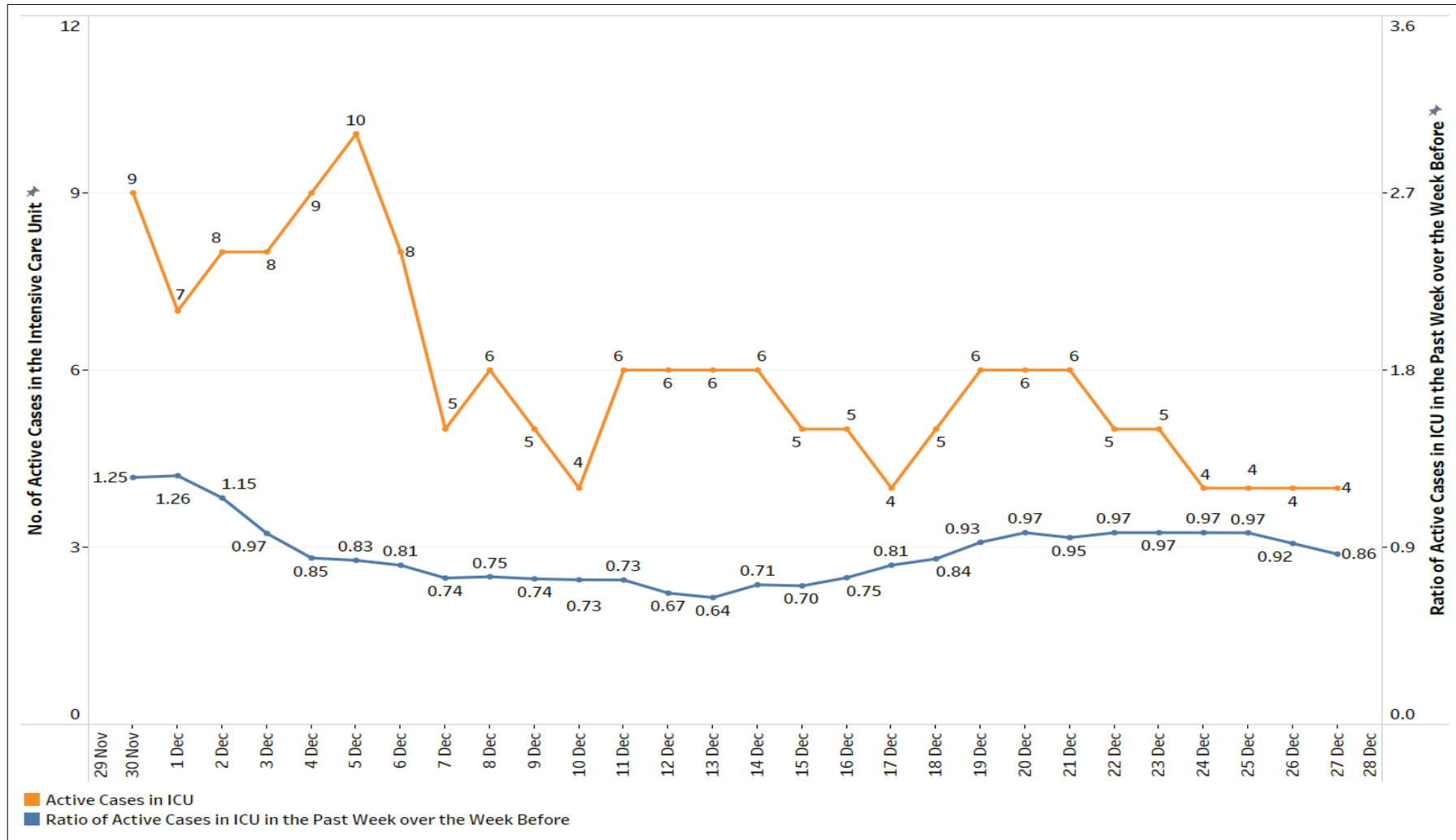


Figure 8: Deaths, Admissions into ICU and Discharges from ICU Among Local Cases by Notification Date (30 Nov – 27 Dec)

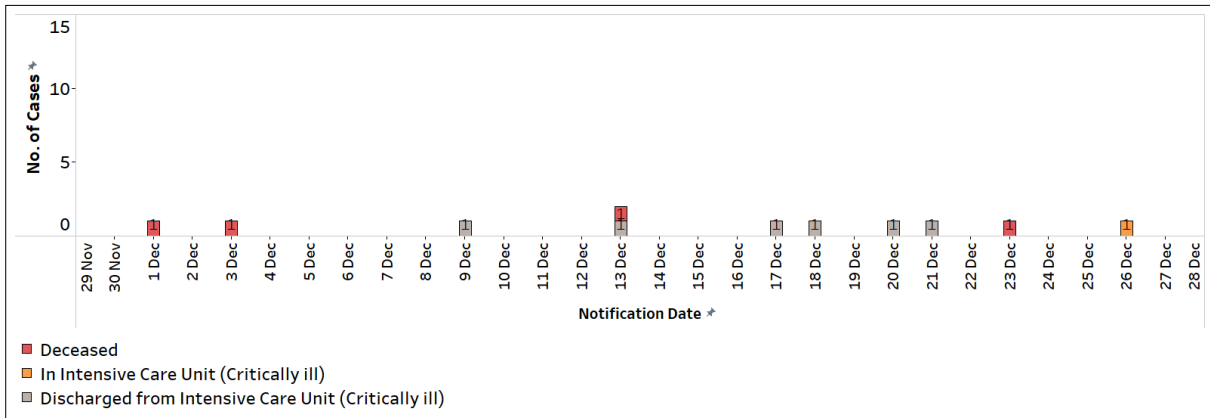


Figure 9: COVID-19 Cases and Virus Level in Wastewater over time (1 Jul 2021 – 25 Dec 2022)
The line graph (in black) reflects the daily 3-day moving average (3DMA) of the wastewater COVID-19 virus levels from all testing sites in the community. The stacked area chart (in pink) reflects the daily number of COVID-19 cases reported in the community.

