

12 June 2021 Daily Report on COVID-19**(1) Number of COVID-19 Cases****Figure 1.1:** Breakdown of New Confirmed Cases in the Past 14 Days

Press Release Date	Imported			Non-Imported Cases													All Cases	
	Isolated before Detection	Detected through Surveillance ²	Sub-Total	Community Cases								Dorm Residents ¹						
				Isolated before Detection ³				Detected through Surveillance ⁴				Sub-Total	Incidence Rate ⁵ (per 100,000)	Isolated before Detection ³	Detected through Surveillance ⁴	No. of Cases		Incidence Rate ⁵ (per 100,000)
				SC/PR	G or F	Visitor	Sub-Total	SC/PR	G or F	Visitor	Sub-Total							
Before 30-May	4,293	328	4,621	605	340	4	949	1,180	719	10	1,909	2,858	-	54,524		54,524	-	62,003
30-May	6	0	6	6	5	0	11	4	3	1	8	19	0.35	0	0	0	0	25
31-May	7	0	7	10	1	0	11	4	1	0	5	16	0.30	0	0	0	0	23
1-Jun	2	1	3	3	2	1	6	7	2	0	9	15	0.28	0	0	0	0	18
2-Jun	7	0	7	13	4	0	17	5	2	0	7	24	0.45	0	0	0	0	31
3-Jun	10	0	10	21	6	1	28	6	1	0	7	35	0.65	0	0	0	0	45
4-Jun	6	0	6	4	1	0	5	2	0	0	2	7	0.13	0	0	0	0	13
5-Jun	5	0	5	7	5	1	13	0	0	0	0	13	0.24	0	0	0	0	18
6-Jun	14	0	14	3	2	0	5	1	0	0	1	6	0.11	0	0	0	0	20
7-Jun	9	0	9	5	0	0	5	0	0	0	0	5	0.093	0	0	0	0	14
8-Jun	5	0	5	1	0	0	1	1	1	0	2	3	0.056	0	1	1	0.31	9
9-Jun	2	0	2	0	1	0	1	0	1	0	1	2	0.037	0	0	0	0	4
10-Jun	9	0	9	1	0	0	1	1	2	0	3	4	0.074	0	0	0	0	13
11-Jun	6	0	6	0	0	0	0	2	1	0	3	3	0.056	0	0	0	0	9
12-Jun	9	0	9	0	3	0	3	3	3	0	6	9	0.17	0	0	0	0	18
Total since start of outbreak	4,390	329	4,719	679	370	7	1,056	1,216	736	11	1,963	3,019	-	54,525		54,525	-	62,263
Population at risk												5,381,000				323,000		5,704,000
Prevalence												0.06%				16.88%		1.09%

Notes

¹ Includes PRs and visitors residing in dorms. Breakdown of dorm cases into those detected through surveillance and those isolated before detection is not available before 24 Aug.

² 272 cases were reported before early Apr, and constitute the 1st wave of imported cases.

³ Cases who were already quarantined and tested during quarantine to determine their status.

⁴ Cases who were identified through surveillance testing, such as the bi-weekly Rostered Routine Testing (RRT) of at-risk workers and testing of those with Acute Respiratory Illness (ARI) symptoms.

⁵ Incidence rates are rounded to two significant figures.

Figure 1.2: Epidemic Curve of the COVID-19 Outbreak by Press Release Date

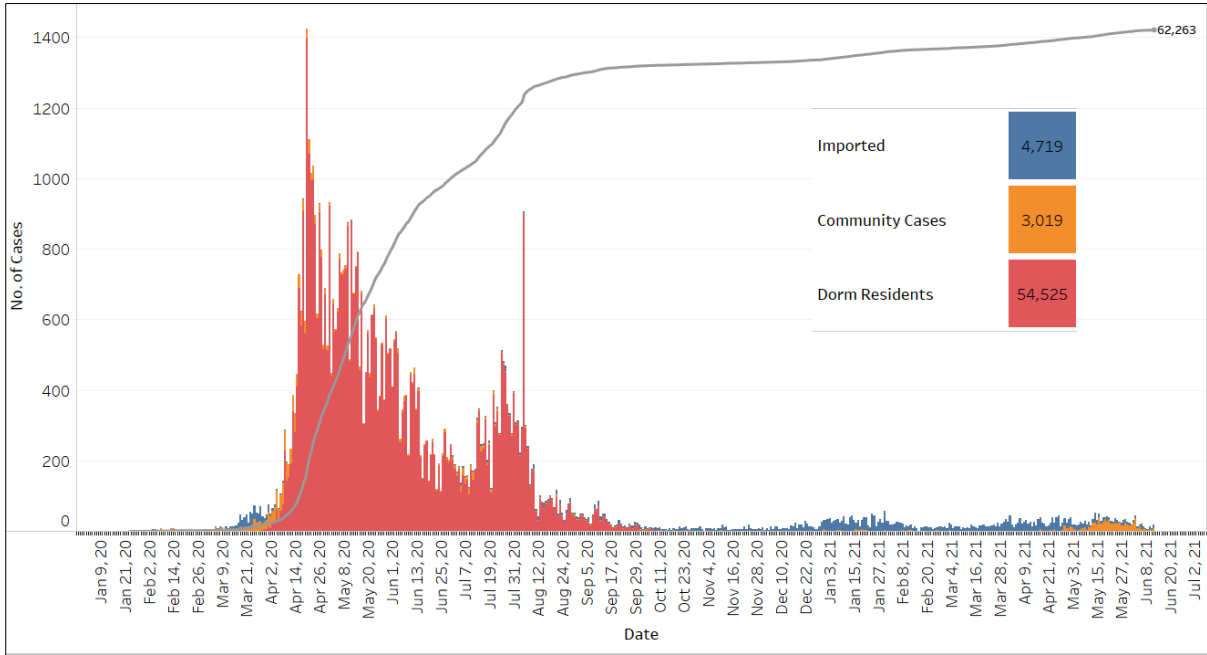


Figure 1.3: Epidemic Split Curve of the COVID-19 Outbreak by Press Release Date

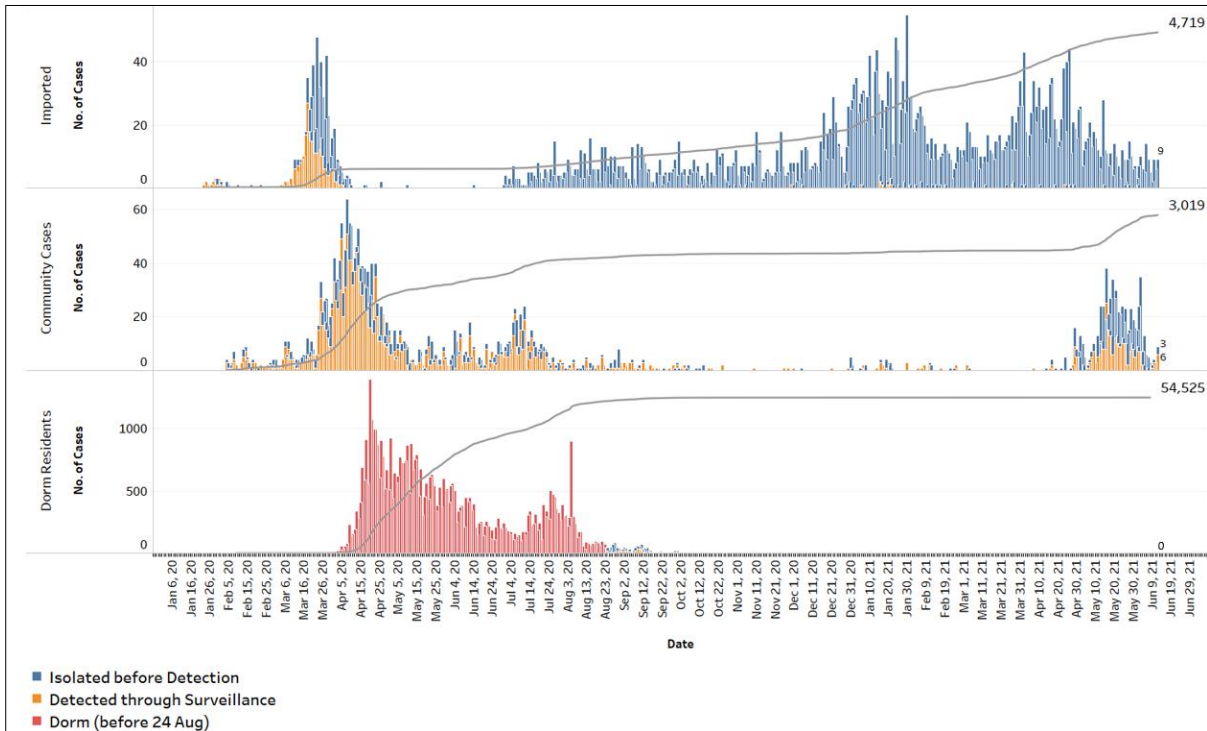


Figure 1.4: Epidemic Curve of COVID-19 Re-infections by Press Release Date

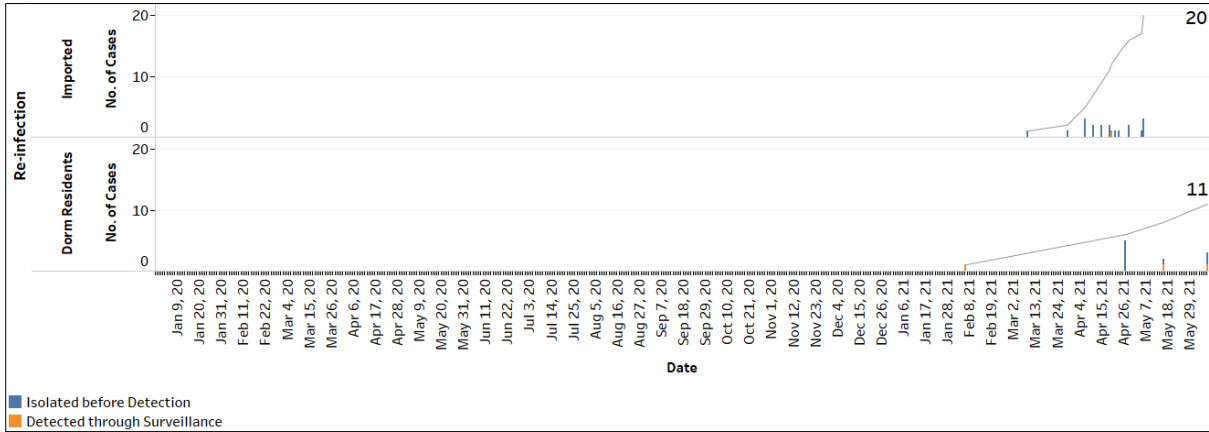


Figure 1.5: Epidemic Curve of Imported Cases by Press Release Date (left panel) and Arrival Date (right panel)

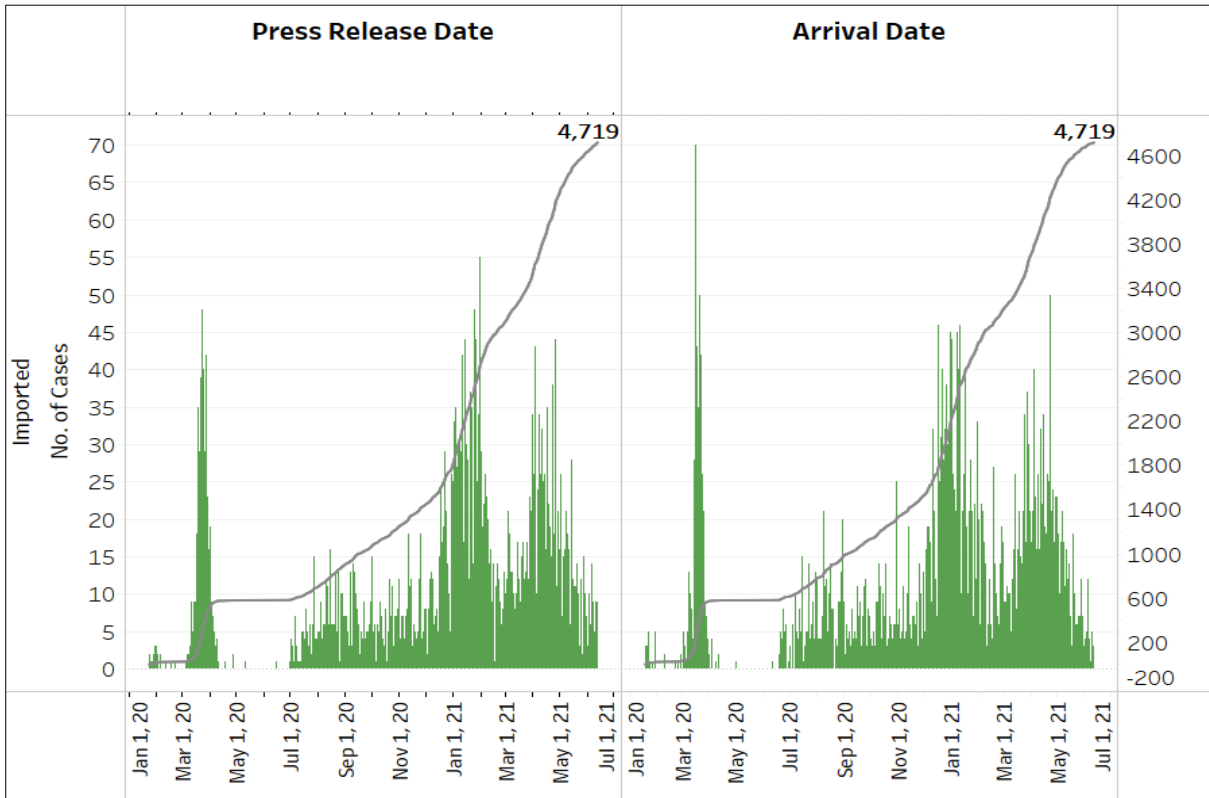


Figure 1.6: Epidemic Curve of Community Cases by Press Release Date (left panel) and by Symptom Onset or Notification Date⁶ (right panel)

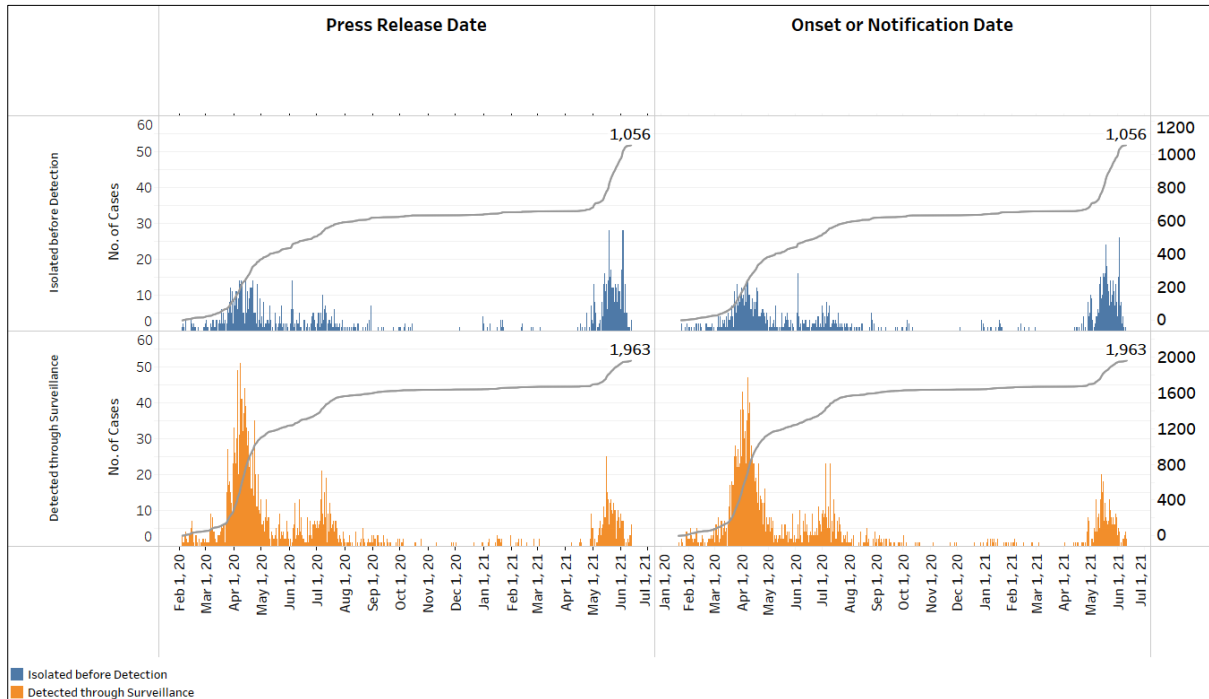
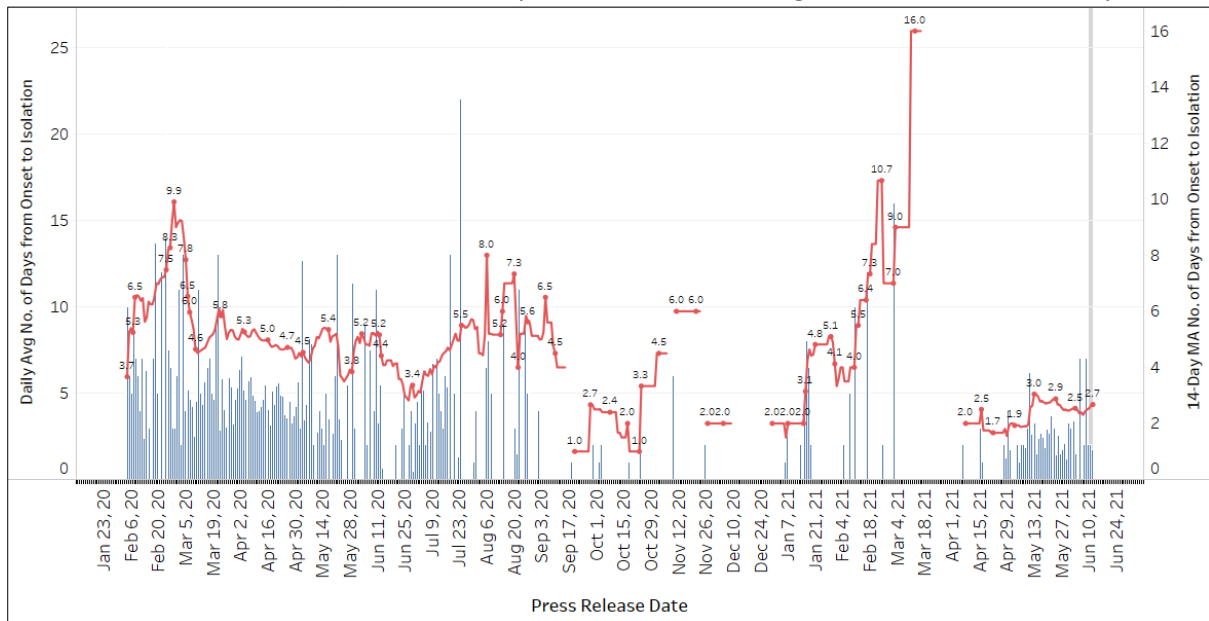


Figure 1.7: Average Number of Days from Onset of Symptoms to Isolation (QO, hospital admission or notification to MOH) for Community Cases Detected through Surveillance in Each Day



Line represents the 14-day moving average; Bar represents the daily average⁷

⁶ Date of notification was used for cases that did not display any symptoms. The numbers with onset in the past few days may see an increase as more cases are notified.

⁷ Area in grey demarcates data points for the past 3 days where some cases may still be pending epidemiological investigation. The bar graph shows the daily average number of days from symptoms onset to isolation, while the line graph shows the moving average for the past 14 days. Both graphs exclude cases with no onset date (asymptomatic) in the computation of the average. Community cases with symptoms who are isolated on the same day that symptoms occurred would have an isolation time of 0. There is a gap in the line graph from 16 to 18 Sep as there are no symptomatic cases in the preceding 14 days.

Figure 1.8: Weekly Reclassifications of Previously Reported Cases (*next update will be on 14 Jun*)

	Imported	Community Linked	Community Unlinked	Dorm Residents	Total
Total number of cases as at 31 May	4,633	2,004	890	54,524	62,051
Cases reported 1 Jun - 7 Jun	54	89	16	0	159
Net reclassifications of previously reported cases, incorporated 1 Jun - 7 Jun	1	17	-18	0	0
Total number of cases as at 7 Jun	4,688	2,110	888	54,524	62,210

Case Number	PR date	Occupation	Link Reclassification	Rationale for Link Reclassification
62439	5 Jun 21	Student	Community Unlinked → Imported (UK) - Overseas infection	Case has recent travel history to UK. She is likely an intermittent shedder previously infected overseas.
62688	5 Jun 21	Manager	Community Unlinked → Community Linked (62371)	Case 62688 is phylogenetically linked to case 62371 who was an imported case from Chennai. Both cases stayed at the same hotel.
62873	6 May 21	Cleaner At T3 Changi Airport	Community Unlinked → Community Linked (62654)	Case is the index case of his cluster. He is phylogenetically linked to imported case 62654 and there was transient contact between both cases at the airport.
63127	5 Jun 21	Domestic Worker	Community Unlinked → Community Linked (Cluster 63127)	Case is phylogenetically linked to other cases linked to White Sands mall. She had visited White Sands mall during the same period as other confirmed cases during their infectious period.
63147	5 Jun 21	Domestic Worker	Community Unlinked → Community Linked (Cluster 63127)	Case is phylogenetically linked to other cases linked to White Sands mall.
63166	5 Jun 21	Cook	Community Unlinked → Community Linked (White Sands)	Case is the index case of his cluster and is phylogenetically linked to other cases linked to White Sands mall. He had visited White Sands mall during the same period as other confirmed cases during their infectious period.

Case Number	PR date	Occupation	Link Reclassification	Rationale for Link Reclassification
63286	3 Jun 21	Unemployed	Community Unlinked → Community Linked (Cluster 63289)	Case stays at 506 Hougang Ave 8 and is linked to 63055 who also stays in the same block.
63290	16 May 21	Unemployed	Community Unlinked → Community Linked (JEM/WG)	Case visited JEM on 10 May 21.
63292	3 Jun 21	Digital Web Designer	Community Unlinked → Community Linked (Cluster 63289)	Case was visiting his parent's family who stayed at 506 Hougang Ave 8. He is phylogenetically linked to Cluster 63286.
63354	3 Jun 21	Teacher	Community Unlinked → Community Linked (Cluster 63335)	Case is phylogenetically linked to the 63335 cluster. Case had visited the office of Pacific Law Corporation in the infectious period of other cases from the company.
63379	5 Jun 21	Registry Officer	Community Unlinked → Community Linked (Cluster 63127)	Case is phylogenetically linked to other cases linked to White Sands mall. She had visited White Sands mall during the same period as other confirmed cases during their infectious period.
63392	3 Jun 21	Finance Manager	Community Unlinked → Community Linked (Cluster 63289)	Case stays at 506 Hougang Ave 8 and is phylogenetically linked to Cluster 63286.
63543	5 Jun 21	Operations Manager	Community Unlinked → Community Linked (White Sands)	Case is the index case of his cluster and is phylogenetically linked to other cases linked to White Sands mall. He had visited White Sands mall during the same period as other confirmed cases during their infectious period.
63609	3 Jun 21	Housewife	Community Unlinked → Community Linked (Cluster 63289)	Case stays at 506 Hougang Ave 8 and is phylogenetically linked to Cluster 63286.

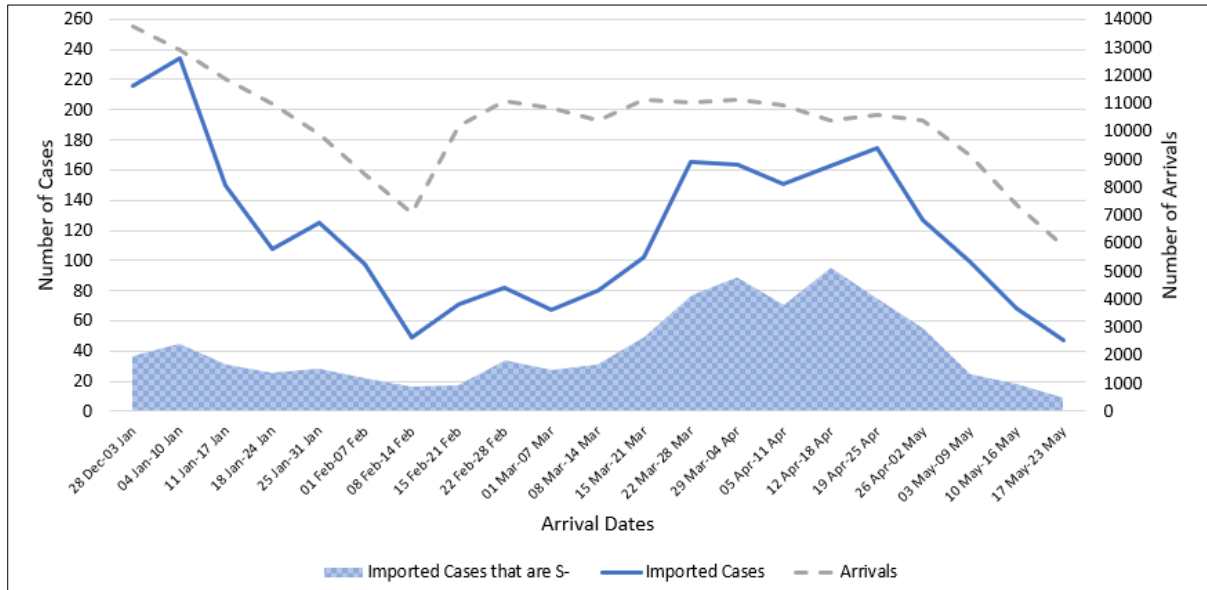
Case Number	PR date	Occupation	Link Reclassification	Rationale for Link Reclassification
63757	3 Jun 21	Retiree	Community Unlinked → Community Linked (Cluster 63289)	Case stays at 506 Hougang Ave 8 and is phylogenetically linked to Cluster 63286.
63876	3 Jun 21	Media Content Producer	Community Unlinked → Community Linked (Cluster 63806)	Case works at A'Posh BizHub.
63908	31 May 21	Operations Support Officer	Community Unlinked → Community Linked (Cluster 63887)	Given that the Case (Daughter 3 of case 63940) has visited case multiple times during the infectious period (on 23 and 26 May), it is likely that 63908 (onset on 28 May) acquired the infection from 63940. As such, 63908 (local unlinked) will be linked to Cluster 63887.
63999	30 May 21	Housewife	Community Unlinked → Community Linked (Cluster 63286)	Case stays at 506 Hougang Avenue 8.

(2) Imported COVID 19 Cases

Figure 2.1: Serology and Symptom Status of Imported Cases Reported from 30 May to 5 Jun

Symptoms	S+	S-	Not Serology Tested	Pending Serology Result	Total No. of Cases
Asymptomatic	31	7	0	1	39
Symptomatic	4	1	0	0	5
Total	35	8	0	1	44

Figure 2.2: Weekly Total Number of Imported Cases, Imported Cases that are S- and Arrivals from 28 Dec 20 to 23 May 21 (next update will be on 14 June)⁸



⁸ Data from the past 2 weeks are excluded as arrivals on SHN who arrived in the past 2 weeks may not have their SHN exit test results yet. "Imported Cases that are S-" comprises imported cases who are (a) serology negative; or (b) not tested for serology. "Imported Cases with Ct values 30 and below" have low Ct values which are suggestive of high viral load. Notwithstanding, Ct values should be interpreted with caution along with other epidemiological and clinical factors.

Number of COVID 19 Cases in Hospitals and Community Care Facilities

Figure 3.1: Summary of Confirmed Cases by Status in the Past 14 Days

Press Release Date	Currently Admitted in Hospitals		In Care Facilities ⁹	Total Recovered		Total Demised	Total
	ICU	General Wards		Completed Isolation	Discharged from Hospital		
30-May	3	219	339	58,005	3,429	33	62,028
31-May	2	221	336	58,021	3,438	33	62,051
1-Jun	2	215	338	58,037	3,444	33	62,069
2-Jun	2	214	328	58,069	3,454	33	62,100
3-Jun	2	229	324	58,093	3,464	33	62,145
4-Jun	2	227	316	58,110	3,470	33	62,158
5-Jun	2	205	323	58,133	3,480	33	62,176
6-Jun	2	205	321	58,145	3,490	33	62,196
7-Jun	2	202	313	58,166	3,494	33	62,210
8-Jun	2	185	296	58,197	3,505	34	62,219
9-Jun	1	157	291	58,231	3,509	34	62,223
10-Jun	1	149	287	58,251	3,514	34	62,236
11-Jun	1	132	279	58,272	3,527	34	62,245
12-Jun	1	124	266	58,301	3,537	34	62,263

⁹ Community Care Facilities (i.e. D'Resort, EXPO, Tuas South), Private Hospitals (i.e. Concord International Hospital, Mt Elizabeth Hospital, Gleneagles Hospital, Mt Elizabeth Novena Hospital, Parkway East Hospital), Community Hospitals (i.e. Bright Vision Hospital) and other care facilities.

(3) Number of Stay Home Notice (SHN) Issued

Figure 4.1: Daily Number of SHN issued (19 Feb 2020 to 11 June 2021)

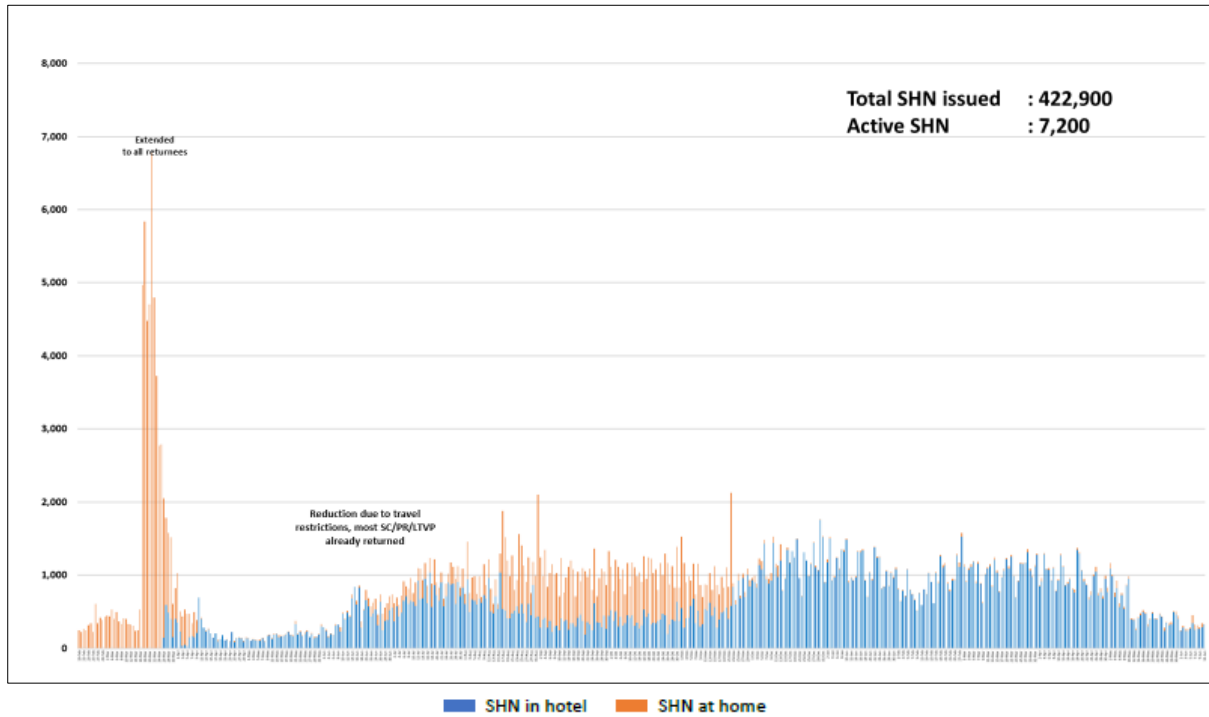
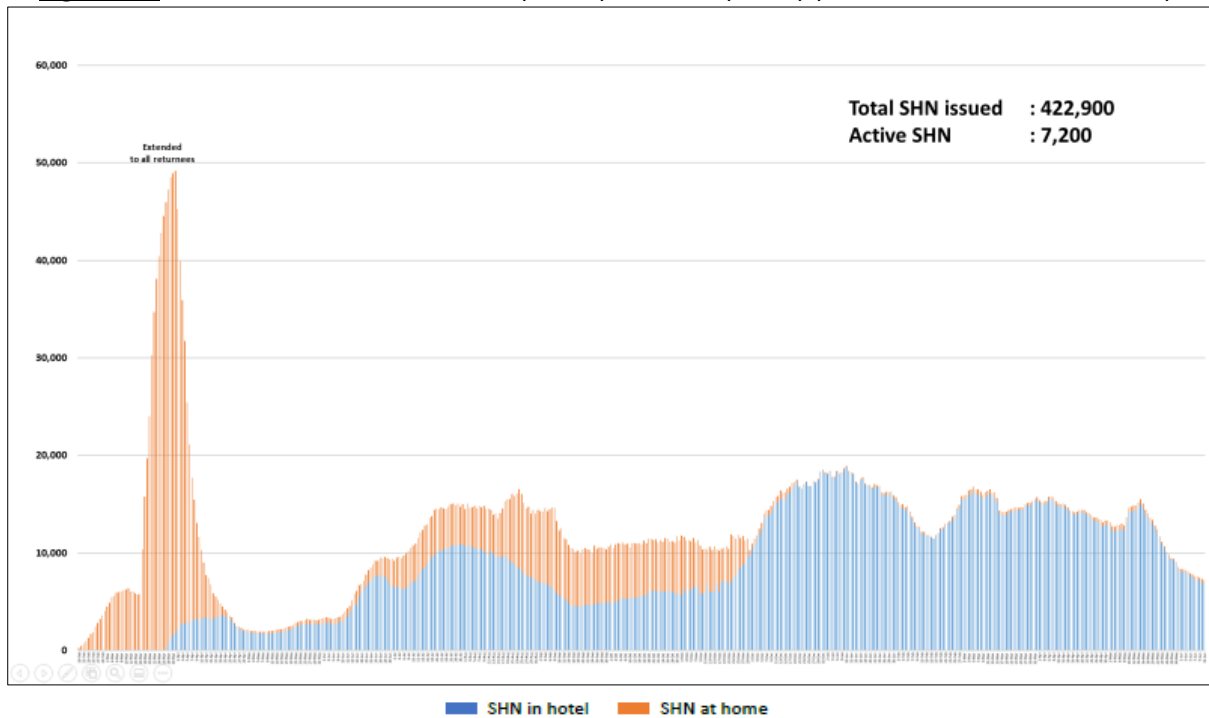


Figure 4.2: Active Stock Number of SHN (Home) and SHN (Hotel) (19 Feb 2020 to 11 June 2021)



(4) Number of Quarantine Orders (QO) Generated

Figure 5.1: Daily Number of QOs Generated

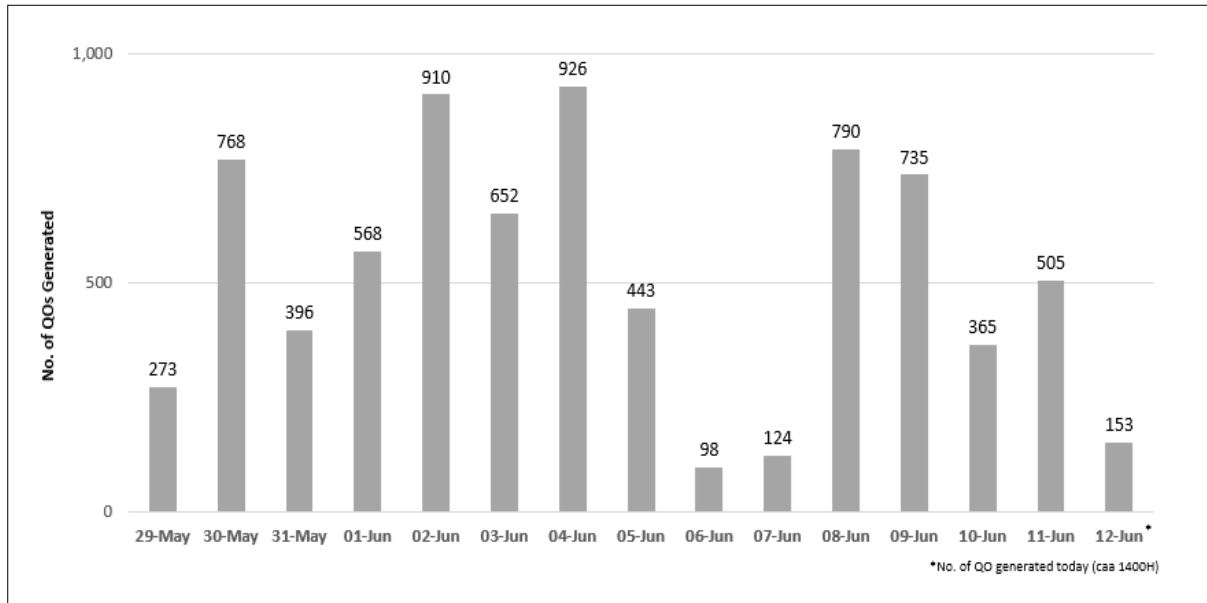


Figure 5.2: Active Number of Persons Under Quarantine (PUQs)

