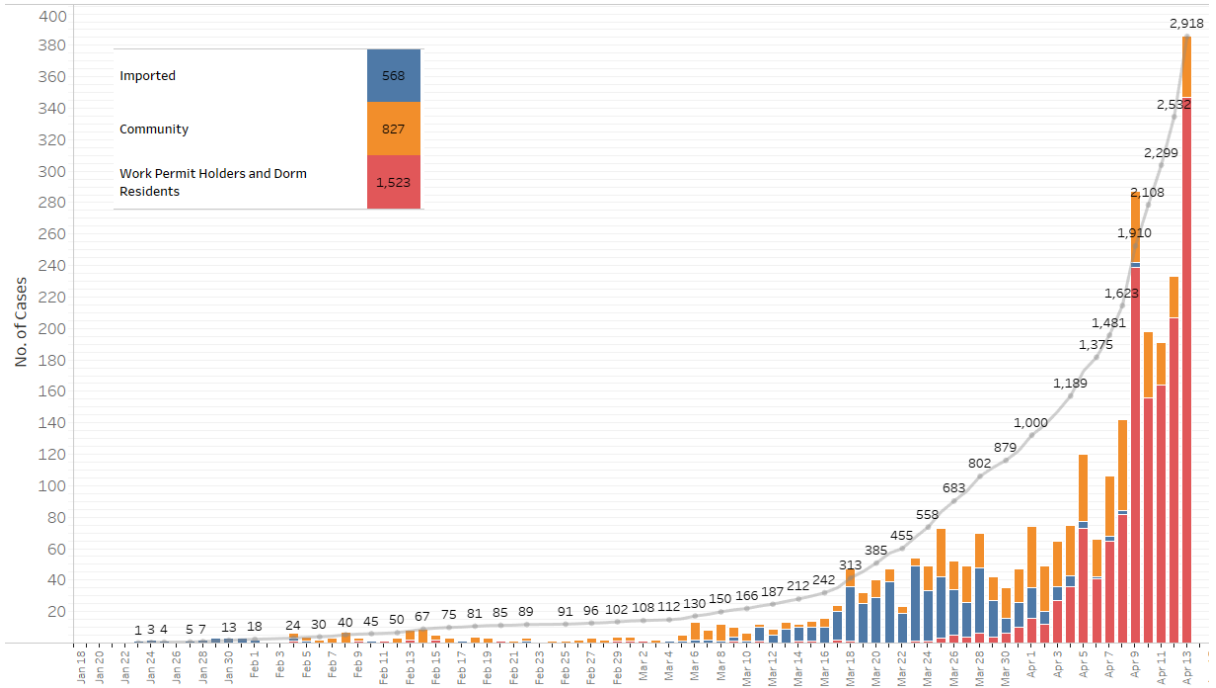


**13 April 2020 Daily Report on COVID-19****(1) Number of COVID-19 Cases****Figure 1.1:** Number of Cases Reported over the Past 14 Days

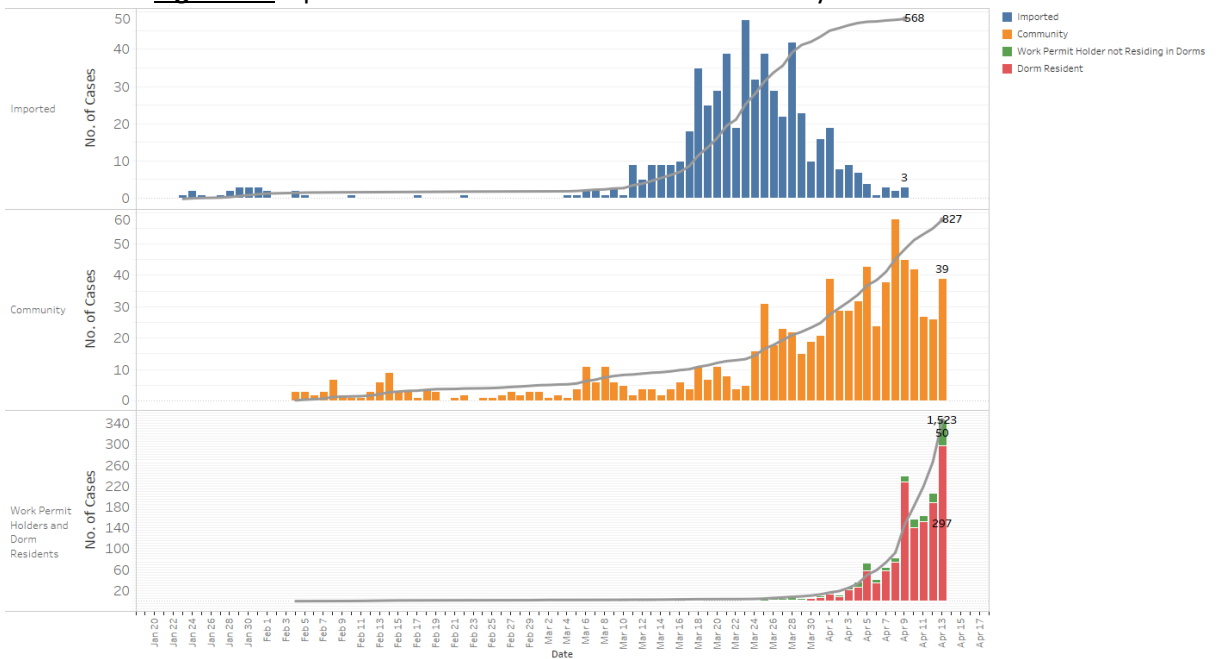
Press Release Date	Local Cases								Imported Cases	Total Cases	Local Cases Residing in Dorms <sup>1</sup>	Work Permit Holders not Residing in Dorms <sup>2</sup>	Community Cases <sup>3</sup>
	SC/PR			Long-Term Passholders				Others <sup>4</sup>					
	Linked Cases	Pending Investigations	Sub-Total	Linked to Dorm / Construction Clusters <sup>5</sup>	Linked to Other Clusters	Pending Investigations	Sub-Total						
Before 31-Mar	213	84	297	5	59	21	85	1	496	879	11	37	335
31-Mar	9	10	19	5	4	3	12	0	16	47	6	4	21
01-Apr	21	13	34	10	4	7	21	0	19	74	13	3	39
02-Apr	18	9	27	6	5	3	14	0	8	49	8	4	29
03-Apr	16	9	25	22	8	1	31	0	9	65	22	5	29
04-Apr	15	14	29	29	4	6	39	0	7	75	27	9	32
05-Apr	19	19	38	60	7	10	77	1	4	120	58	15	43
06-Apr	11	10	21	34	5	4	43	1	1	66	34	7	24
07-Apr	22	14	36	49	5	13	67	0	3	106	57	8	38
08-Apr	24	27	51	67	6	14	87	2	2	142	74	8	58
09-Apr	23	20	43	221	5	15	241	0	3	287	228	11	45
10-Apr	19	21	40	131	10	16	157	1	0	198	141	15	42
11-Apr	7	17	24	115	3	48	166	1	0	191	152	12	27
12-Apr	7	16	23	163	11	36	210	0	0	233	188	19	26
13-Apr	8	21	29	276	6	73	355	2	0	386	297	50	39
31 Mar-13 Apr	219	220	439	1188	83	249	1520	8	72	2039	1305	170	492
% of Total	51%	72%	60%	100%	58%	92%	95%	89%	13%	70%	99%	82%	59%
Total since start of outbreak	432	304	736	1193	142	270	1605	9	568	2918	1316	207	827

<sup>1</sup> Number of confirmed cases residing in dormitories. Source: MOM.<sup>2</sup> Number of confirmed work permit cases not residing in dormitories. Source: ICA.<sup>3</sup> Based on the date that MOH informed MOM of the cases.<sup>4</sup> Others include short-term visitors and those pending details.<sup>5</sup> Dorm and Construction Clusters include S11 Dorm, Tenda Dorm, Tampines Dorm, Kranji Lodge, Sungei Tengah Lodge, Westlite Toh Guan, Toh Guan Dorm, Cochrane Lodge 1, Cochrane Lodge 2, Shaw Lodge, Acacia Lodge, Homestay Lodge, Penjuru, North Coast Lodge, KAKIKO Group, Sungei Kadut Tendah Dorm, Westlite Woodlands, 85 Kallang Dorm, Tuas View Dorm, Project Glory, Construction Site @ 6 Battery Road, NUH Renovation Sites, Kenyon / UBS Site Project, Chin Kiong Construction Engineering

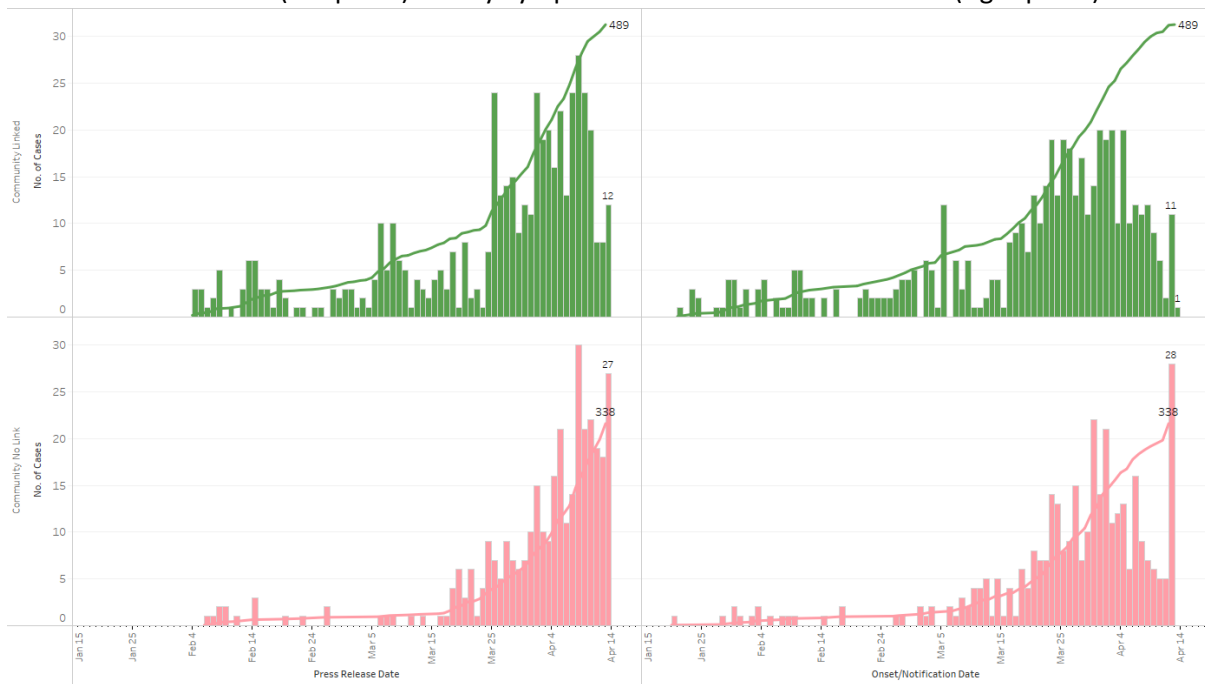
**Figure 1.2:** Epidemic Curve of the COVID-19 Outbreak by Press Release Date



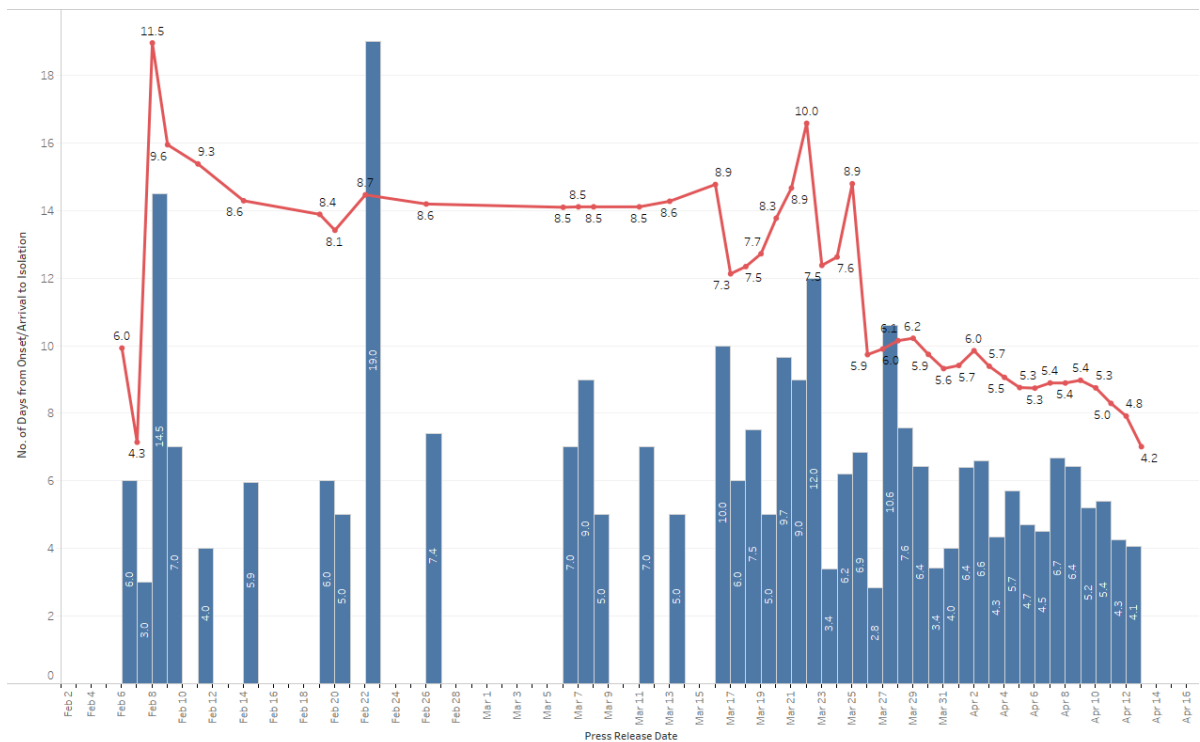
**Figure 1.3:** Epidemic Curve of the COVID-19 Outbreak by Press Release Date



**Figure 1.4:** Epidemic Curve of Community Cases with Breakdown by Link and Unlink cases by Press Release Date (left panel) and by Symptom Onset or Notification Date<sup>6</sup> (right panel)



**Figure 1.5:** Average Number of Days from Onset of Symptoms to Isolation for Local Unlinked Cases in Each Day (by Press Release Date)



Line represents the 14-day moving average, Bar represents the daily average.

<sup>6</sup> Date of notification was used for cases that did not display any symptoms. The numbers with onset in the past few days may see an increase as more cases are notified.

**(2) Number of COVID-19 Cases in Hospitals and Community Isolation Facilities****Figure 2.1: Summary of Cases by Status (Past 14 Days)**

Press Release Date	Currently Admitted		Decanted <sup>7</sup>		Discharged	Demised	Total
	ICU	General Wards	In Isolation	Completed Isolation			
31 Mar	22	401	260	32	208	3	<b>926</b>
1 Apr	24	437	291	34	211	3	<b>1000</b>
2 Apr	23	441	315	42	224	4	<b>1049</b>
3 Apr	25	448	354	47	235	5	<b>1114</b>
4 Apr	26	474	386	55	242	6	<b>1189</b>
5 Apr	25	544	414	68	252	6	<b>1309</b>
6 Apr	25	546	454	81	263	6	<b>1375</b>
7 Apr	29	598	471	101	276	6	<b>1481</b>
8 Apr	29	640	542	115	291	6	<b>1623</b>
9 Apr	29	855	559	146	315*	6*	<b>1910</b>
10 Apr	32	843 <sup>8</sup>	734 <sup>9</sup>	172	320	7	<b>2108</b>
11 Apr	31	912	820	199	329	8	<b>2299</b>
12 Apr	31	945	988	217	343	8	<b>2532</b>
13 Apr	29	1129	1165	239	347	9	<b>2918</b>

\* A patient passed away from ischaemic heart disease on 8 Apr, not due to complications from COVID-19. This case has been reclassified from "Demised" to "Discharged".

<sup>7</sup> Decanted to Community Isolation Facilities (i.e. D' Resort, EXPO), Private Hospitals (i.e. Concord International Hospital, Mt Elizabeth Hospital, Gleneagles Hospital, Mt Alvernia Hospital, Mt Elizabeth Novena Hospital), and Community Hospitals (Bright Vision Hospital, St Andrew's Community Hospital).

<sup>8</sup> S11 confirmed cases were classified on 9 Apr under "General Ward".

<sup>9</sup> S11 confirmed cases were re-classified on 10 Apr under "Decanted and in isolation".

(3) Number of Stay-Home-Notice (SHN) Issued

Figure 3.1: Daily Number of SHN issued

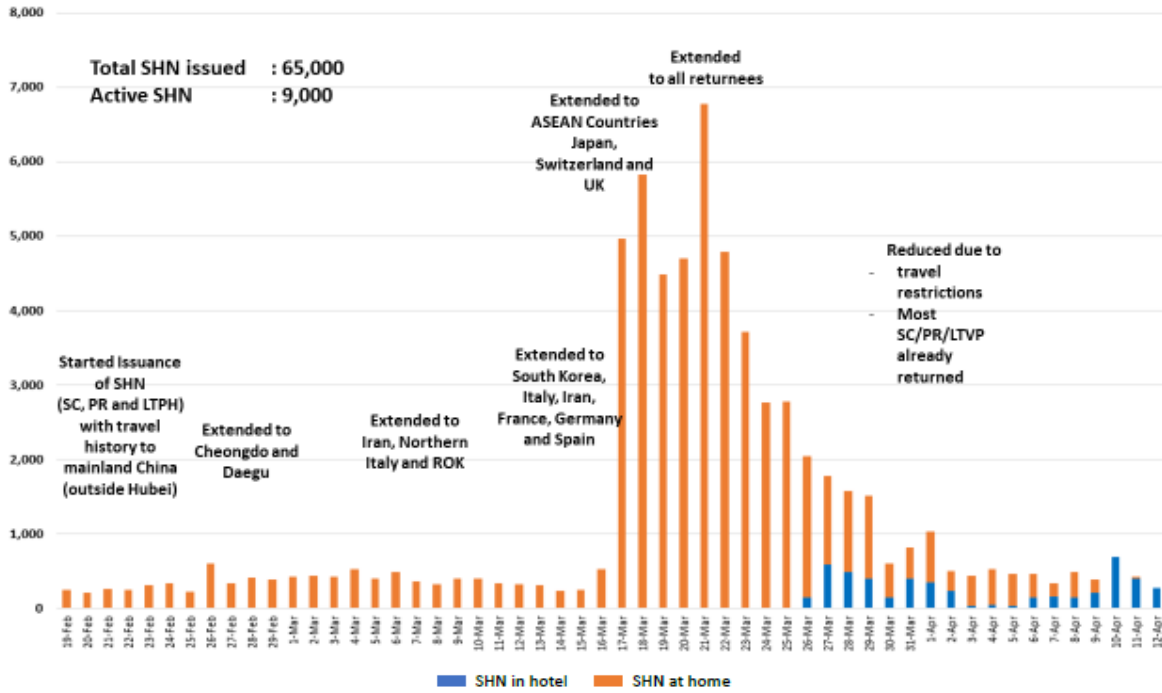
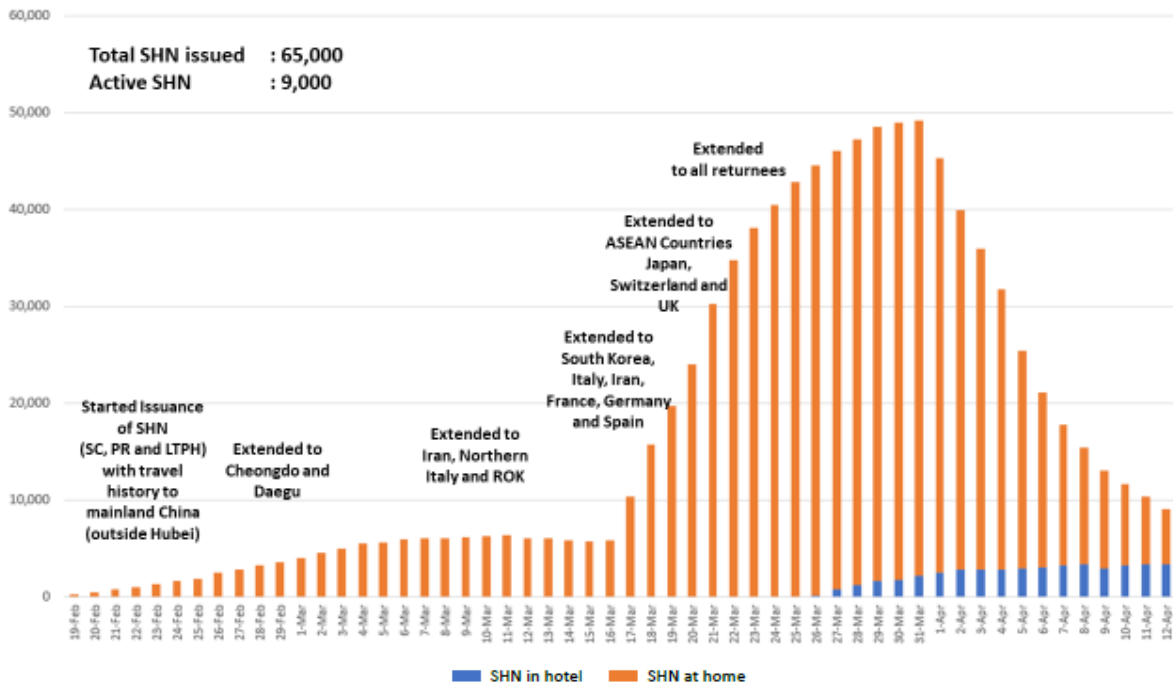
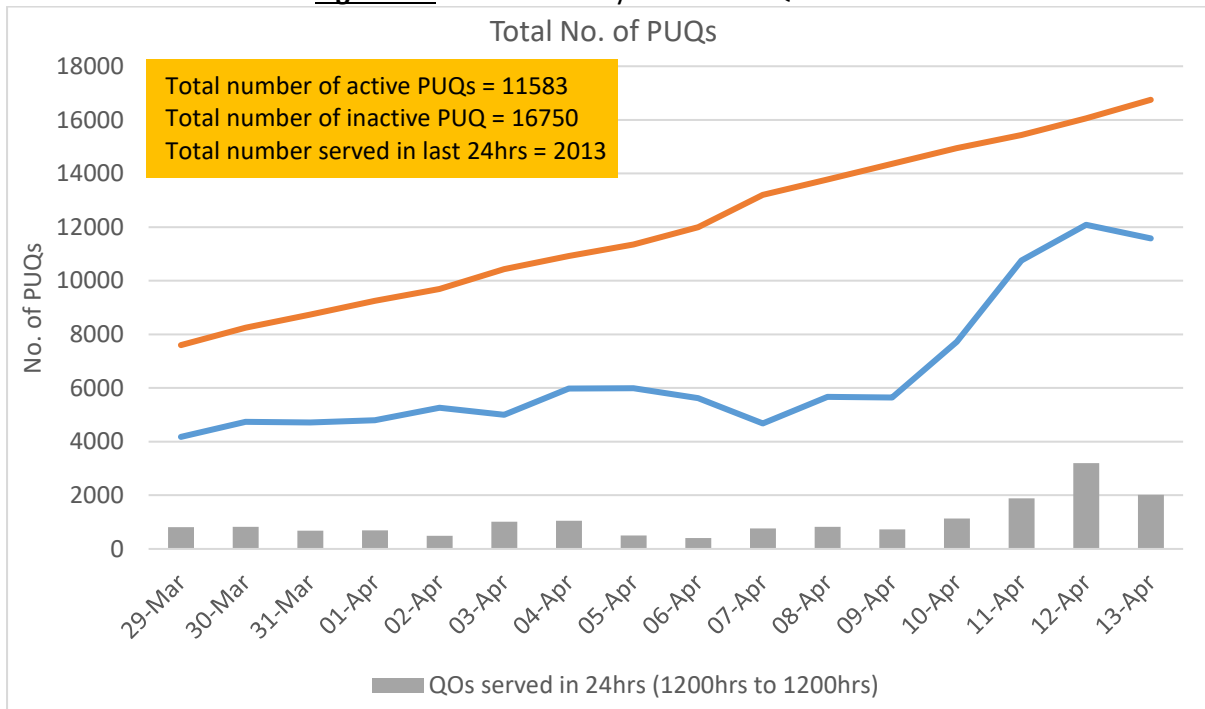


Figure 3.2: Active Stock Number of SHN (Home) and SHN (Hotel)

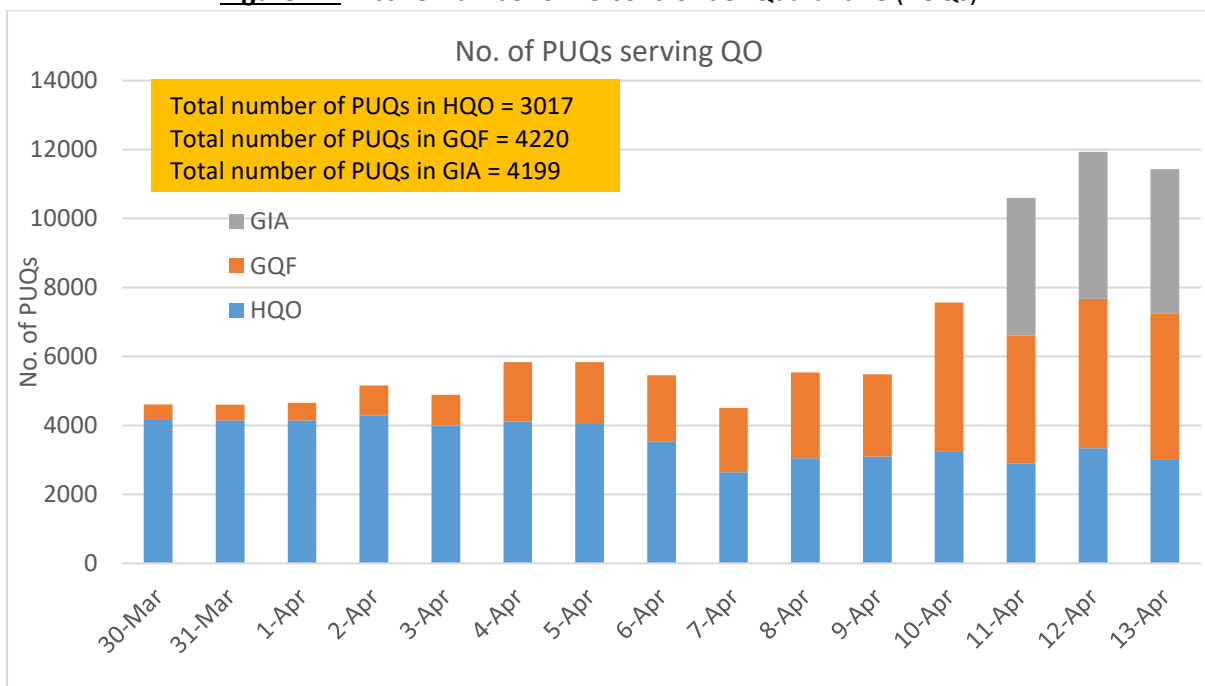


**(4) Number of Quarantine Order (QO) Issued**

**Figure 4.1:** Total and Daily Number of QOs Issued



**Figure 4.2:** Active Number of Persons Under Quarantine (PUQs)<sup>10</sup>



HQO = Home Quarantine Order  
 GQF = Government Quarantine Facility  
 GIA = Gazetted Isolation Area

<sup>10</sup> Excludes PUQs admitted to hospitals.