

17 April 2020 Daily Report on COVID-19**(1) Number of COVID-19 Cases****Figure 1.1: Number of Cases Reported over the Past 14 Days¹**

Press Release Date	Imported	Non-Imported Cases															Total Cases	
		Community Cases (residents & pass holders excluding work permit holders and dorm residents)										Work permit holders not residing in dorms			Dorm Residents			
		Linked Cases				Unlinked Cases ²				Sub-Total	Incidence Rate (per 100,000)	Linked Cases	Unlinked Cases ³	Sub-Total	Incidence Rate (per 100,000)	No. of Cases		Incidence Rate (per 100,000)
		SC/SPR	G or F	Visitor	Sub-Total	SC/SPR	G or F	Visitor	Sub-Total									
Before 4-Apr	548	277	38	0	315	125	12	1	138	453	-	41	11	52	-	61	-	1,114
4-Apr	7	15	1	0	16	14	2	0	16	32	0.68	8	2	10	1.5	26	8.0	75
5-Apr	4	20	2	0	22	19	1	1	21	43	0.91	8	7	15	2.3	58	18	120
6-Apr	1	11	2	0	13	10	1	0	11	24	0.51	4	3	7	1.1	34	11	66
7-Apr	3	22	2	0	24	14	0	0	14	38	0.81	4	4	8	1.2	57	18	106
8-Apr	2	25	3	1	29	26	2	1	29	58	1.2	4	4	8	1.2	74	23	142
9-Apr	3	23	1	0	24	20	1	0	21	45	0.95	6	5	11	1.7	228	71	287
10-Apr	0	19	1	0	20	21	0	1	22	42	0.89	10	5	15	2.3	141	44	198
11-Apr	0	7	1	0	8	17	2	0	19	27	0.57	3	10	13	2.0	151	47	191
12-Apr	0	7	1	0	8	16	2	0	18	26	0.55	12	7	19	2.9	188	58	233
13-Apr	0	8	4	0	12	21	5	0	26	38	0.81	8	6	14	2.1	334	103	386
14-Apr	0	13	2	0	15	23	2	0	25	40	0.85	13	6	19	2.9	275	85	334
15-Apr	0	8	0	0	8	22	7	0	29	37	0.78	1	3	4	0.6	406	126	447
16-Apr	0	6	1	0	7	16	3	0	19	26	0.55	11	15	26	3.9	676 ⁴	209	728
17-Apr	1	6	0	0	6	16	4	1	21	27	0.57	17	20	37	5.6	558	173	623
Total since start of outbreak	569	467	59	1	527	380	44	5	429	956	-	150	108	258	-	3267	-	5,050
Population at risk ⁵										4,717,000				664,000		323,000		5,704,000
Prevalence										0.02%				0.04%		1.01%		0.09%

¹ Table format updated to reflect the breakdown between (i) imported cases which are managed through our Stay-Home Notice regime; (ii) community cases which are managed through our circuit breaker measures; (iii) work permit holder cases not residing in dorms which are managed through targeted measures with the employers; and (iv) cases residing in dorms which are managed through the full suite of measures in dormitories.

² Includes cases pending epi-investigation.

³ Includes cases pending epi-investigation.

⁴ Includes 22 cases which were previously classified under 'community' as identification details were pending, but have since been identified and re-classified as dorm residents.

⁵ Population at risk for community cases includes SC/PRs and other types of passes holders not residing in dormitories. Source: MOM and Singstat.

Figure 1.2: Epidemic Curve of the COVID-19 Outbreak by Press Release Date

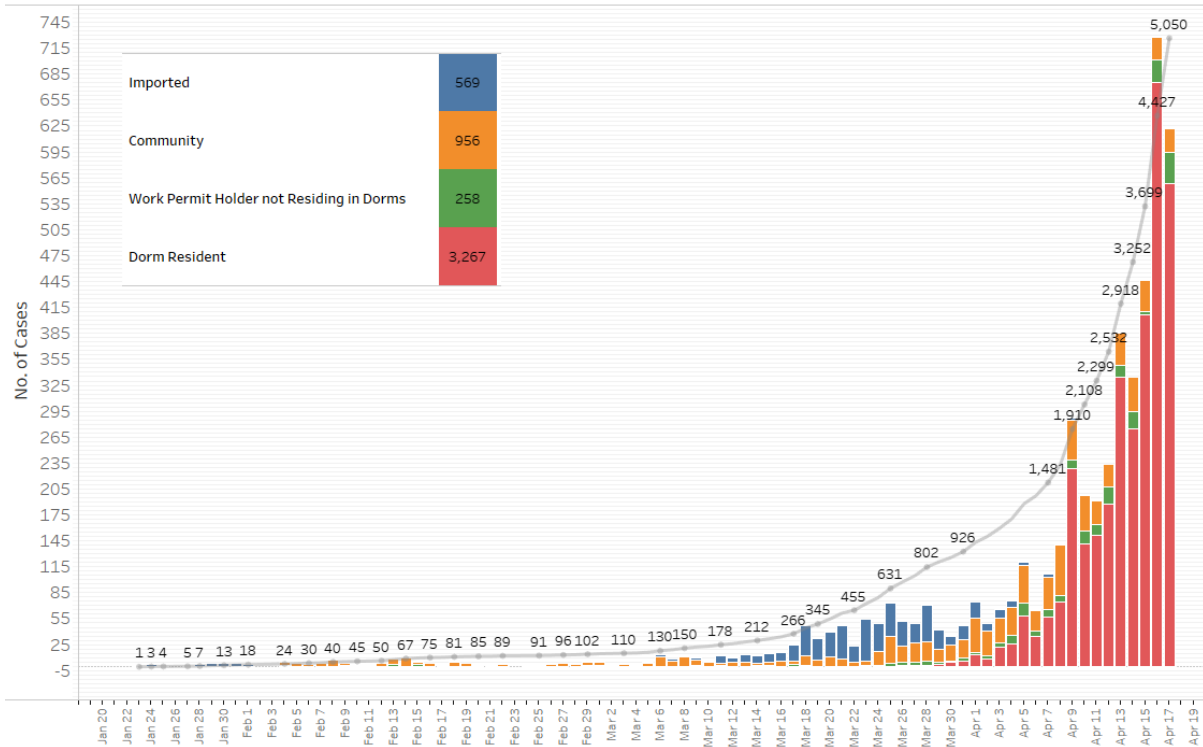
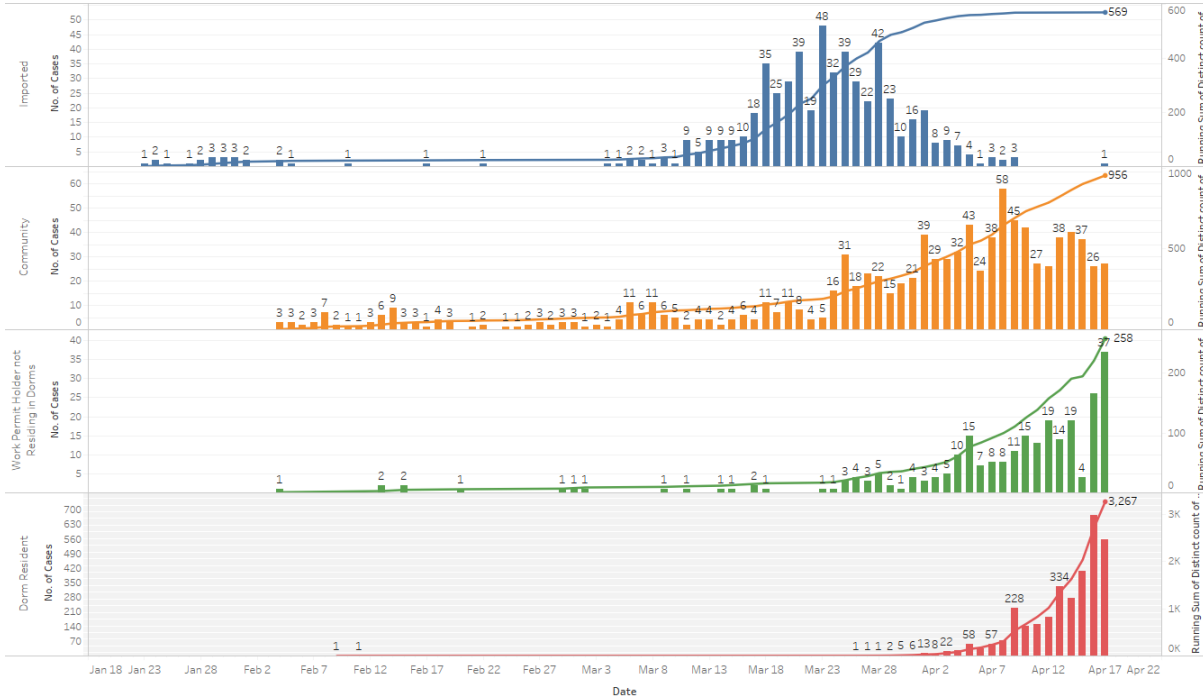


Figure 1.3: Epidemic Curve of the COVID-19 Outbreak by Press Release Date⁶



⁶ Chart format updated to reflect the breakdown between (i) imported cases which are managed through our Stay-Home Notice regime; (ii) community cases which are managed through our circuit breaker measures; (iii) work permit holder cases not residing in dorms which are managed through targeted measures with the employers; and (iv) cases residing in dorms which are managed through the full suite of measures in dormitories.

Figure 1.4: Epidemic Curve of Community Linked and Community Unlinked Cases by Press Release Date (left panel) and by Symptom Onset or Notification Date⁷ (right panel)

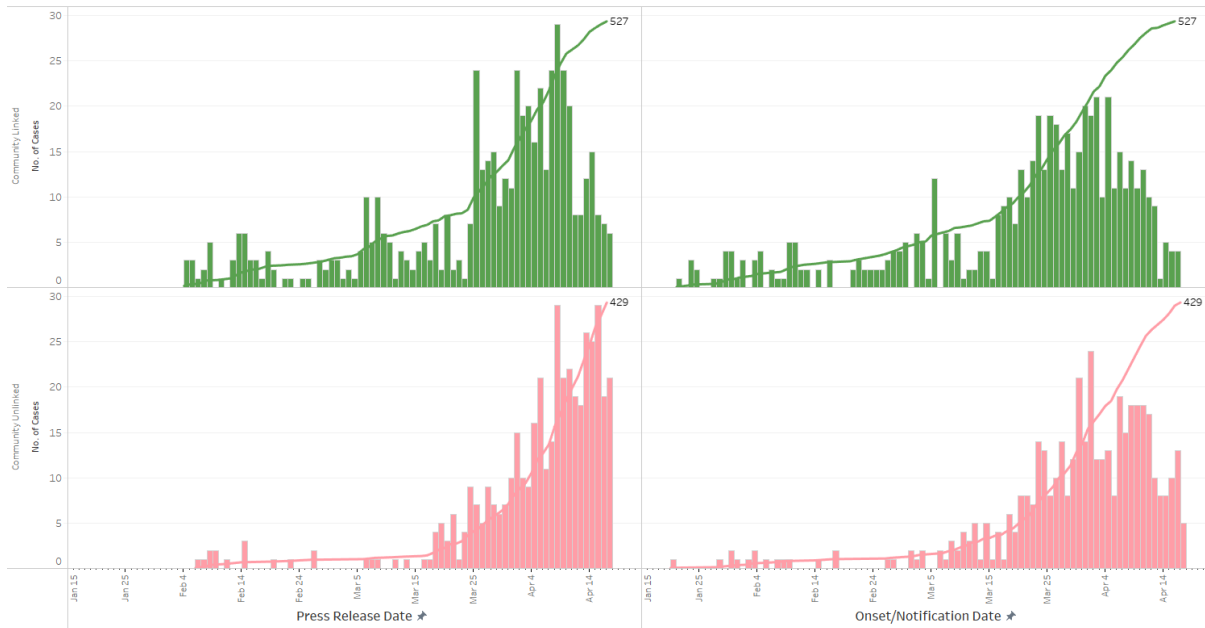
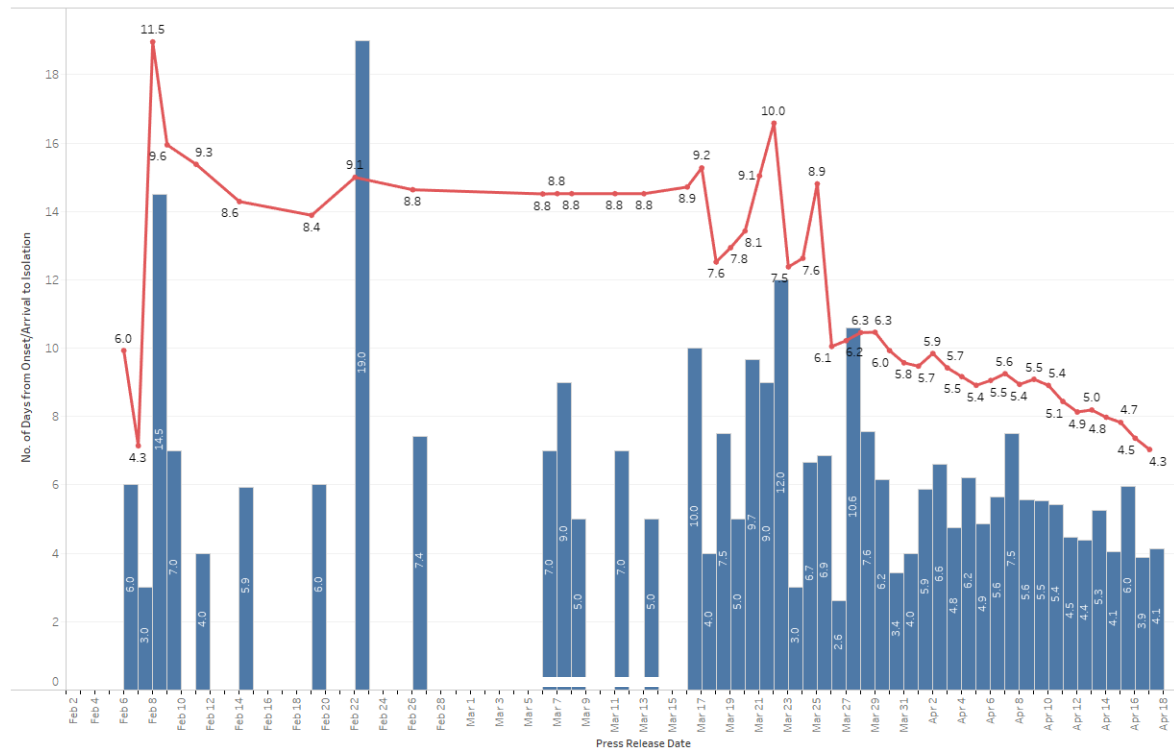


Figure 1.5: Average Number of Days from Onset of Symptoms to Isolation for Community Unlinked Cases in Each Day (by Press Release Date)



Line represents the 14-day moving average, Bar represents the daily average.

⁷ Date of notification was used for cases that did not display any symptoms. The numbers with onset in the past few days may see an increase as more cases are notified.

(2) Number of COVID-19 Cases in Hospitals and Community Isolation Facilities**Figure 2.1:** Summary of Cases by Status (Past 14 Days)

Press Release Date	Currently Admitted		Decanted ⁸		Discharged	Demised	Total
	ICU	General Wards	In Isolation	Completed Isolation			
4 Apr	26	474	386	55	242	6	1,189
5 Apr	25	544	414	68	252	6	1,309
6 Apr	25	546	454	81	263	6	1,375
7 Apr	29	598	471	101	276	6	1,481
8 Apr	29	640	542	115	291	6	1,623
9 Apr	29	855	559	146	315*	6*	1,910
10 Apr	32	843 ⁹	734 ¹⁰	172	320	7	2,108
11 Apr	31	912	820	199	329	8	2,299
12 Apr	31	945	988	217	343	8	2,532
13 Apr	29	1,129	1,165	239	347	9	2,918
14 Apr	28	1,287	1,316	259	352	10	3,252
15 Apr	26	1,470	1,541	284	368	10	3,699
16 Apr	23	1,863	1,848	309	374	10	4,427
17 Apr	22	2,091	2,218	312	396	11	5,050

* A patient passed away from ischaemic heart disease on 8 Apr, not due to complications from COVID-19. This case has been reclassified from "Demised" to "Discharged".

⁸ Decanted to Community Isolation Facilities (i.e. D' Resort, EXPO), Private Hospitals (i.e. Concord International Hospital, Mt Elizabeth Hospital, Gleneagles Hospital, Mt Alvernia Hospital, Mt Elizabeth Novena Hospital, Parkway East Hospital, Farrer Park Hospital), and Community Hospitals (Bright Vision Hospital, St. Andrew's Community Hospital, Yishun Community Hospital, Jurong Community Hospital).

⁹ S11 confirmed cases were classified on 9 Apr under "General Ward".

¹⁰ S11 confirmed cases were re-classified on 10 Apr under "Decanted and in isolation".

(3) Number of Stay-Home-Notice (SHN) Issued

Figure 3.1: Daily Number of SHN issued

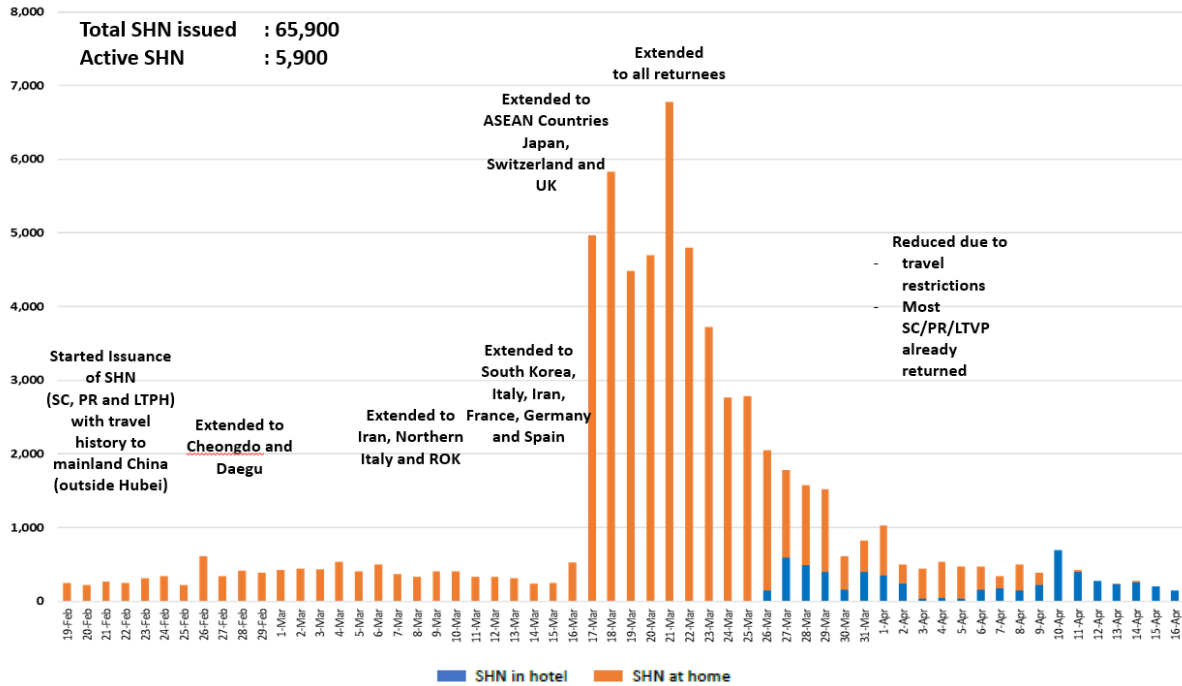
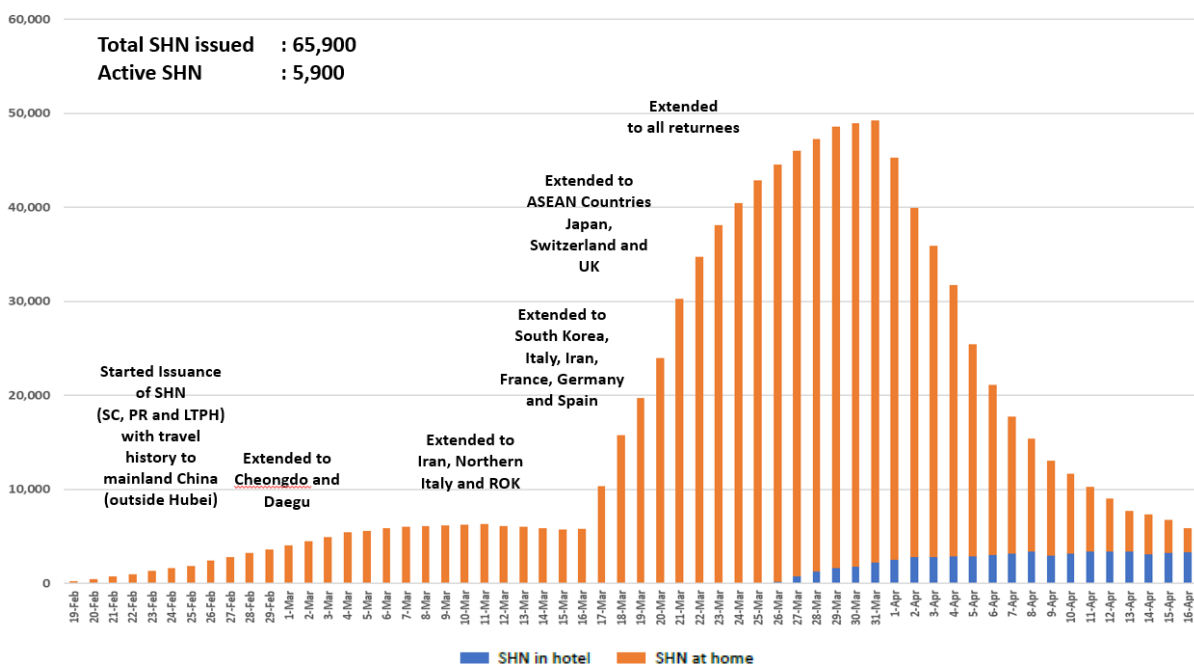


Figure 3.2: Active Stock Number of SHN (Home) and SHN (Hotel)



(4) Number of Quarantine Order (QO) Issued

Figure 4.1: Total and Daily Number of QOs Issued

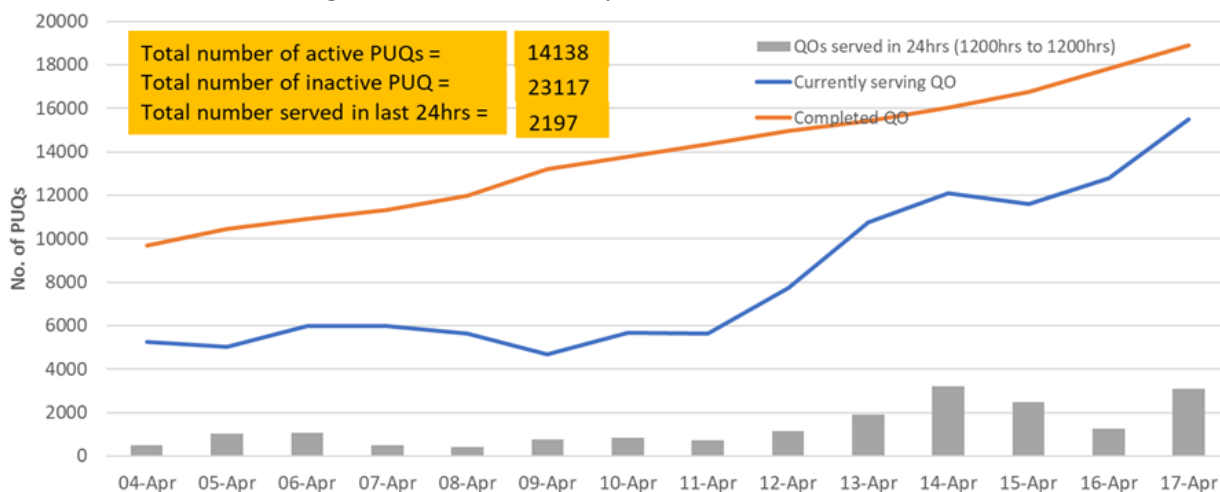
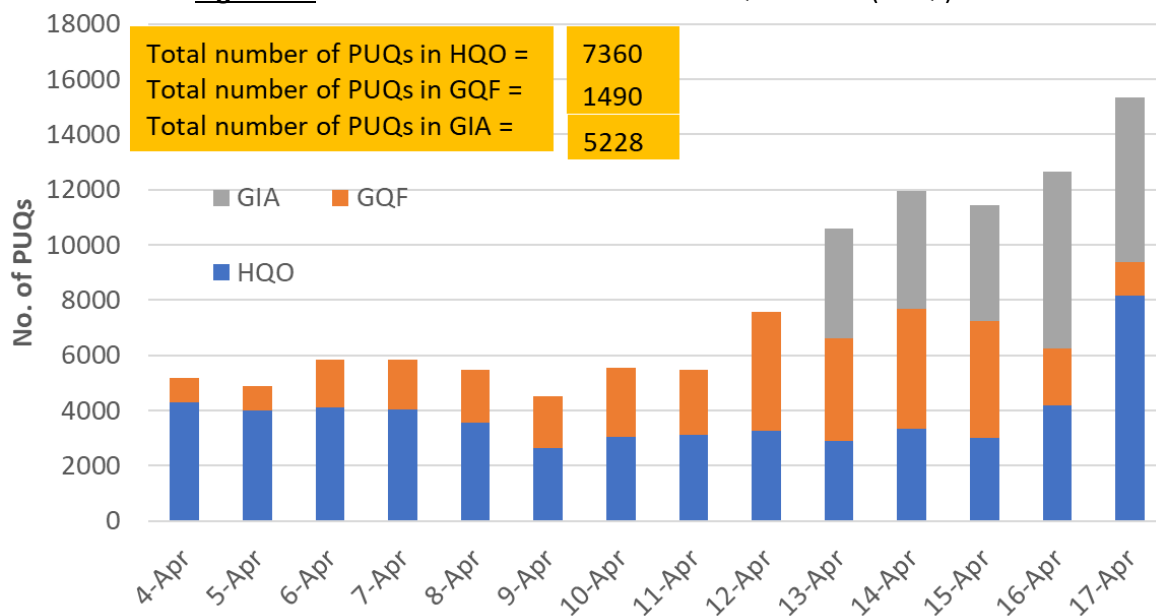


Figure 4.2: Active Number of Persons Under Quarantine (PUQs)¹¹



HQO = Home Quarantine Order
 GQF = Government Quarantine Facility
 GIA = Gazetted Isolation Area

¹¹ Excludes PUQs admitted to hospitals.