

19 December 2020 Daily Report on COVID-19**(1) Number of COVID-19 Cases****Figure 1.1:** Breakdown of New Confirmed Cases in the Past 14 Days

Press Release Date	Imported			Non-Imported Cases														All Cases		
	Isolated before Detection	Detected through Surveillance ²	Sub-Total	Community Cases										Dorm Residents ¹						
				Isolated before Detection ³				Detected through Surveillance ⁴						Sub-Total	Incidence Rate ⁵ (per 100,000)	Isolated before Detection ³	Detected through Surveillance ⁴		No. of Cases	Incidence Rate ⁵ (per 100,000)
				SC/PR	G or F	Visitor	Sub-Total	SC/PR	G or F	Visitor	Sub-Total									
Before 6-Dec	1,201	275	1,476	367	265	2	634	993	637	11	1,641	2,275	-	54,504		54,504	-	58,255		
6-Dec	5	0	5	0	0	0	0	0	0	0	0	0	0	0	0	0	0	0	5	
7-Dec	13	0	13	0	0	0	0	0	0	0	0	0	0	0	0	0	0	0	13	
8-Dec	12	0	12	0	0	0	0	0	0	0	0	0	0	0	0	0	0	0	12	
9-Dec	6	0	6	0	0	0	0	0	0	0	0	0	0	0	0	0	0	0	6	
10-Dec	6	0	6	0	0	0	0	0	0	0	0	0	0	0	0	0	0	0	6	
11-Dec	7	0	7	0	0	0	0	0	0	0	0	0	0	0	0	1	1	0.31	7	
12-Dec	8	0	8	0	0	0	0	0	0	0	0	0	0	0	0	0	0	0	8	
13-Dec	7	0	7	0	0	0	0	0	0	0	0	0	0	0	0	0	0	0	7	
14-Dec	5	0	5	0	0	0	0	0	0	0	0	0	0	0	0	0	0	0	5	
15-Dec	15	0	15	0	0	0	0	0	0	0	0	0	0	0	0	1	1	0.31	15	
16-Dec	12	0	12	0	0	0	0	0	0	0	0	0	0	0	0	0	0	0	12	
17-Dec	24	0	24	0	0	0	0	0	0	0	0	0	0	0	0	0	0	0	24	
18-Dec	9	0	9	0	0	0	0	0	0	0	0	0	0	0	0	0	0	0	9	
19-Dec	17	0	17	0	0	0	0	0	0	0	0	0	0	0	0	0	0	0	17	
Total since start of outbreak	1,347	275	1,622	367	265	2	634	993	637	11	1,641	2,275	-	54,506		54,506	-	58,403		
Population at risk												5,381,000				323,000		5,704,000		
Prevalence												0.04%				16.87%		1.02%		

Notes

¹ Includes PRs and visitors residing in dorms. Breakdown of dorm cases into those detected through surveillance and those isolated before detection is not available before 24 Aug.

² 272 cases were reported before early Apr, and constitute the 1st wave of imported cases. 1 case in Oct tested negative during his 14-day SHN and was subsequently identified as a positive case through a pre-departure swab test.

³ Cases who were already quarantined and tested during quarantine to determine their status.

⁴ Cases who were identified through surveillance testing, such as the bi-weekly Rostered Routine Testing (RRT) of at-risk workers and testing of those with Acute Respiratory Illness (ARI) symptoms.

⁵ Incidence rates are rounded to two significant figures.

Figure 1.2: Epidemic Curve of the COVID-19 Outbreak by Press Release Date

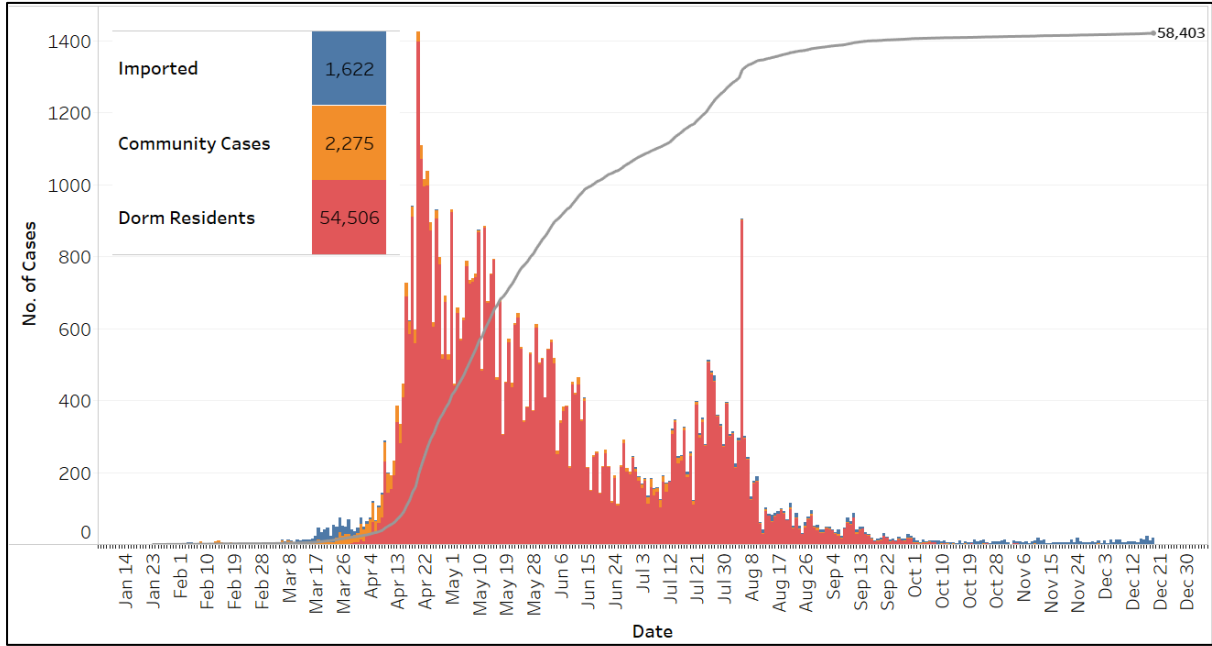


Figure 1.3: Epidemic Split Curve of the COVID-19 Outbreak by Press Release Date

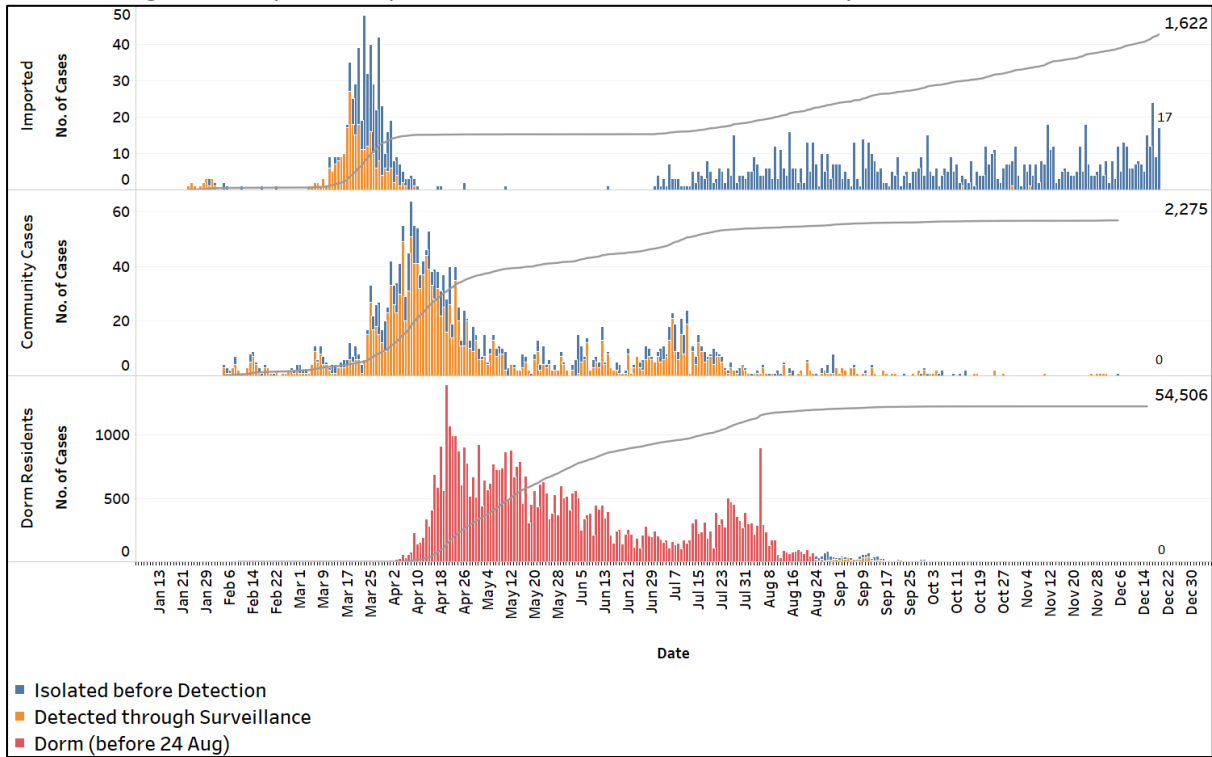


Figure 1.4: Epidemic Curve of Imported Cases by Press Release Date (left panel) and Arrival Date (right panel)

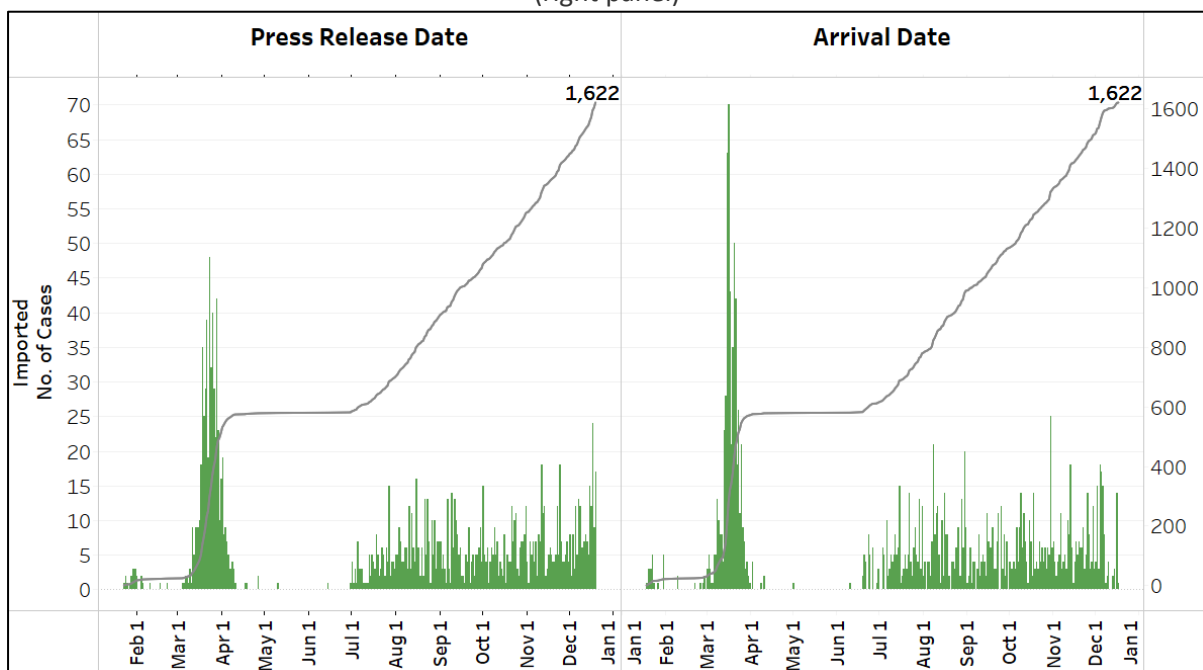
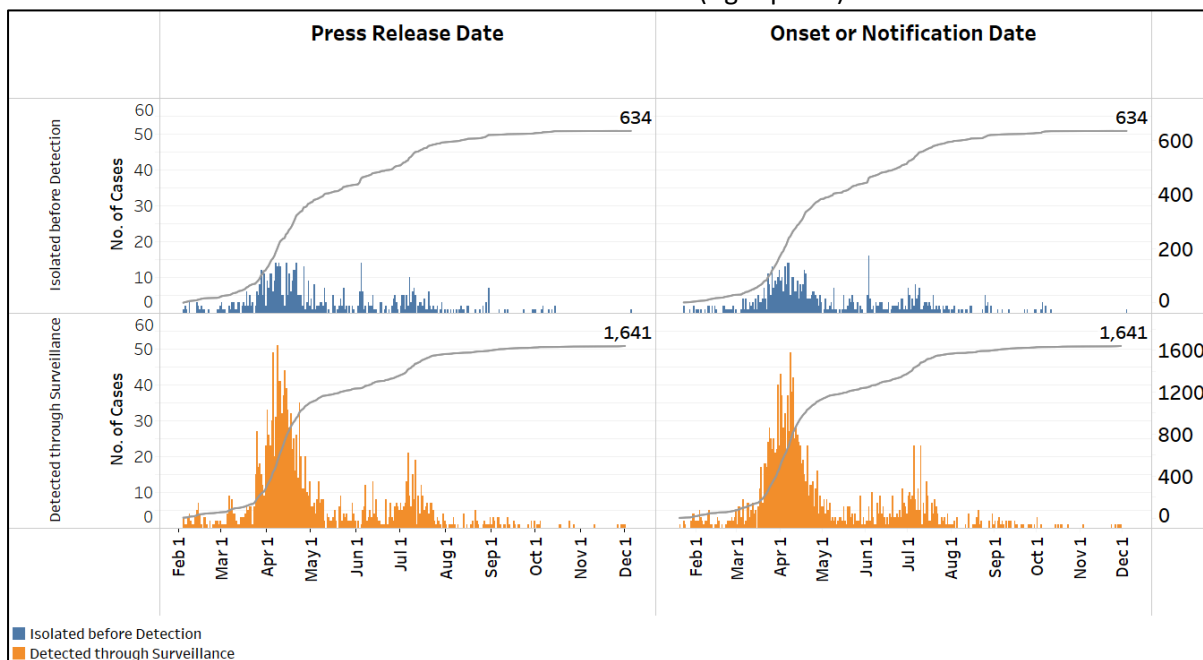
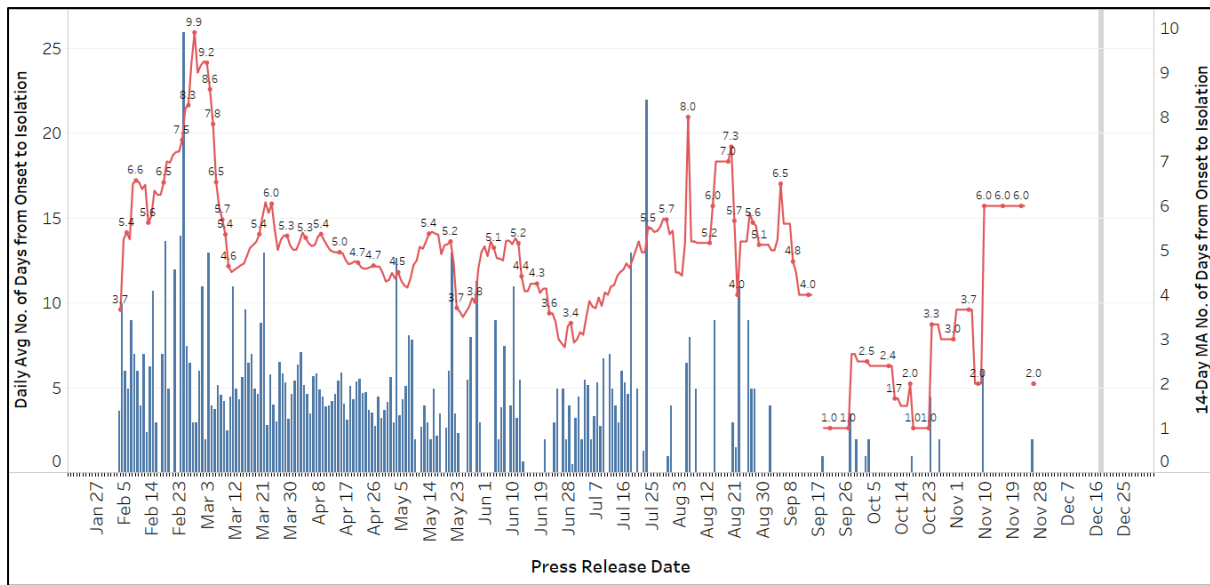


Figure 1.5: Epidemic Curve of Community Cases by Press Release Date (left panel) and by Symptom Onset or Notification Date¹ (right panel)



¹ Date of notification was used for cases that did not display any symptoms. The numbers with onset in the past few days may see an increase as more cases are notified.

Figure 1.6: Average Number of Days from Onset of Symptoms to Isolation (QO, hospital admission or notification to MOH) for Community Cases Detected through Surveillance in Each Day



Line represents the 14-day moving average; Bar represents the daily average²

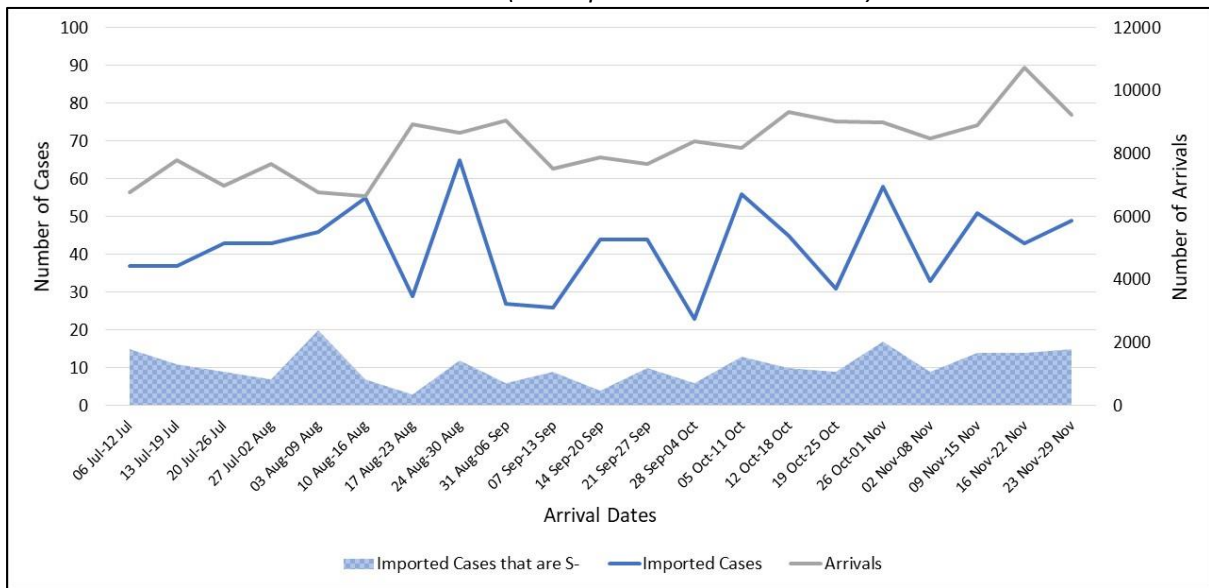
² Area in grey demarcates data points for the past 3 days where some cases may still be pending epidemiological investigation. The bar graph shows the daily average number of days from symptoms onset to isolation, while the line graph shows the moving average for the past 14 days. Both graphs exclude cases with no onset date (asymptomatic) in the computation of the average. Community cases with symptoms who are isolated on the same day that symptoms occurred would have an isolation time of 0. There is a gap in the line graph from 16 to 18 Sep as there are no symptomatic cases in the preceding 14 days.

(2) Imported COVID-19 Cases

Figure 2.1: Serology and Symptom Status of Imported Cases Reported from 6 Dec to 12 Dec

Symptoms	S+	S-	Not Serology Tested	Pending Serology Result	Total No. of Cases
Asymptomatic	36	11	0	0	47
Symptomatic	3	2	5	0	10
Total	39	13	5	0	57

Figure 2.2: Weekly Total Number of Imported Cases, Imported Cases that are S- and Arrivals from 6 Jul to 29 Nov³ (next update will be on 21 Dec)



³ Data from the past 2 weeks are excluded as cases on SHN who arrived in the past 2 weeks may not have their test results yet. "Imported Cases that are S-" comprises imported cases who are (a) serology negative; or (b) not tested for serology.

(3) Number of COVID-19 Cases in Hospitals and Community Care Facilities

Figure 3.1: Summary of Confirmed Cases by Status in the Past 14 Days

Press Release Date	Currently Admitted in Hospitals		In Care Facilities ⁴	Total Recovered		Total Demised	Total
	ICU	General Wards		Completed Isolation	Discharged from Hospital		
6-Dec	0	27	44	55,436	2,724	29	58,260
7-Dec	0	28	48	55,442	2,726	29	58,273
8-Dec	0	23	57	55,448	2,728	29	58,285
9-Dec	0	20	60	55,448	2,734	29	58,291
10-Dec	0	20	60	55,453	2,735	29	58,297
11-Dec	0	29	55	55,456	2,736	29	58,305
12-Dec	0	28	59	55,459	2,738	29	58,313
13-Dec	0	21	62	55,465	2,743	29	58,320
14-Dec	0	22	64	55,465	2,745	29	58,325
15-Dec	0	25	54	55,485	2,748	29	58,341
16-Dec	0	25	61	55,489	2,749	29	58,353
17-Dec	0	33	63	55,497	2,755	29	58,377
18-Dec	0	36	56	55,502	2,763	29	58,386
19-Dec	0	38	62	55,507	2,767	29	58,403

⁴ Community Care Facilities (i.e. D'Resort, EXPO, Tuas South), Private Hospitals (i.e. Concord International Hospital, Mt Elizabeth Hospital, Gleneagles Hospital, Mt Elizabeth Novena Hospital, Parkway East Hospital), Community Hospitals (i.e. Bright Vision Hospital) and other care facilities.

(4) Number of Stay-Home-Notice (SHN) Issued

Figure 4.1: Daily Number of SHN issued (19 Feb to 18 Dec 2020)

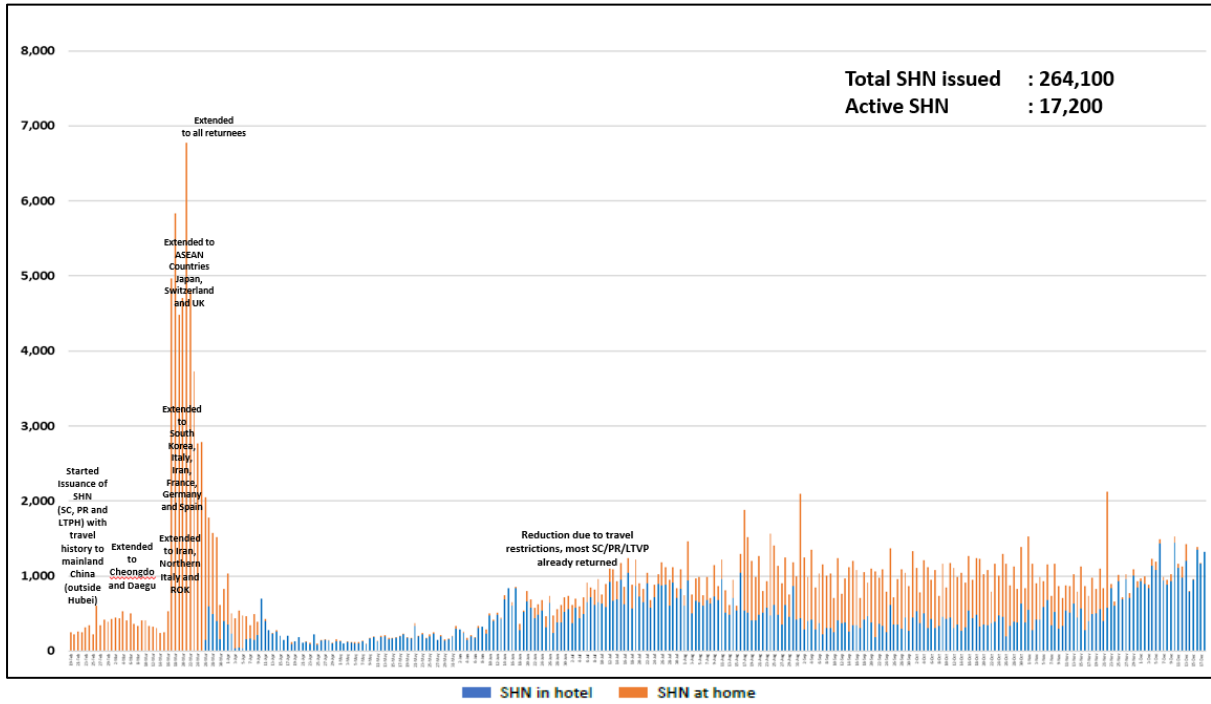
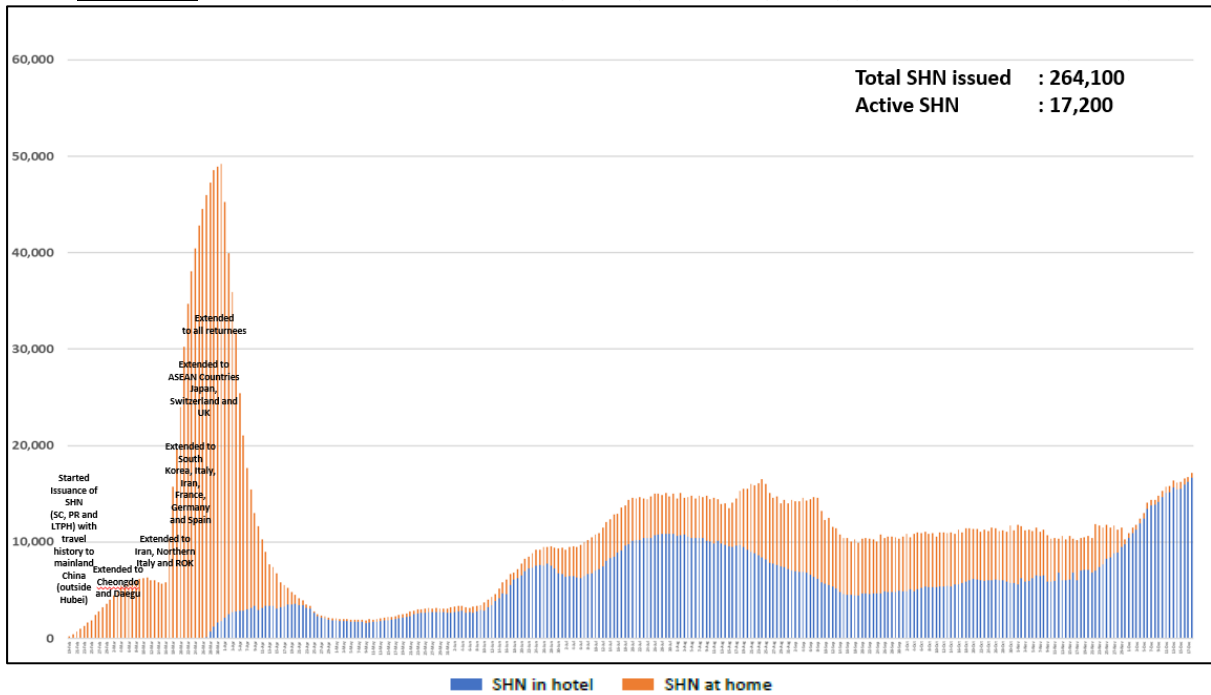


Figure 4.2: Active Stock Number of SHN (Home) and SHN (Hotel) (19 Feb to 18 Dec 2020)



(5) Number of Quarantine Orders (QO) Issued

Figure 5.1: Daily Number of QOs Issued

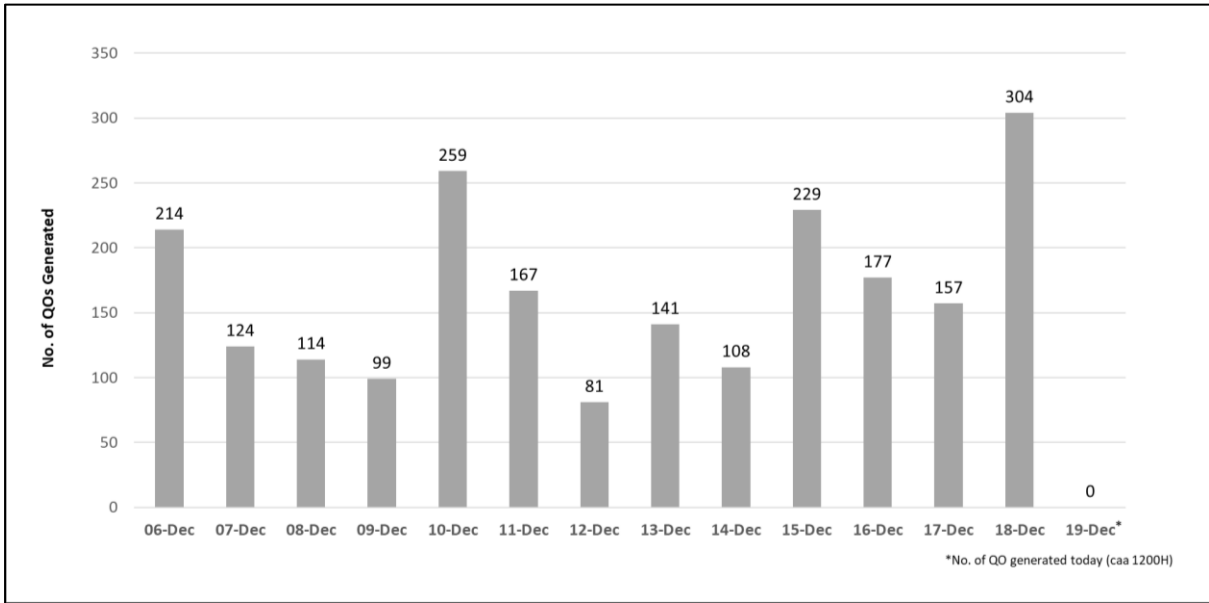


Figure 5.2: Active Number of Persons Under Quarantine (PUQs)

