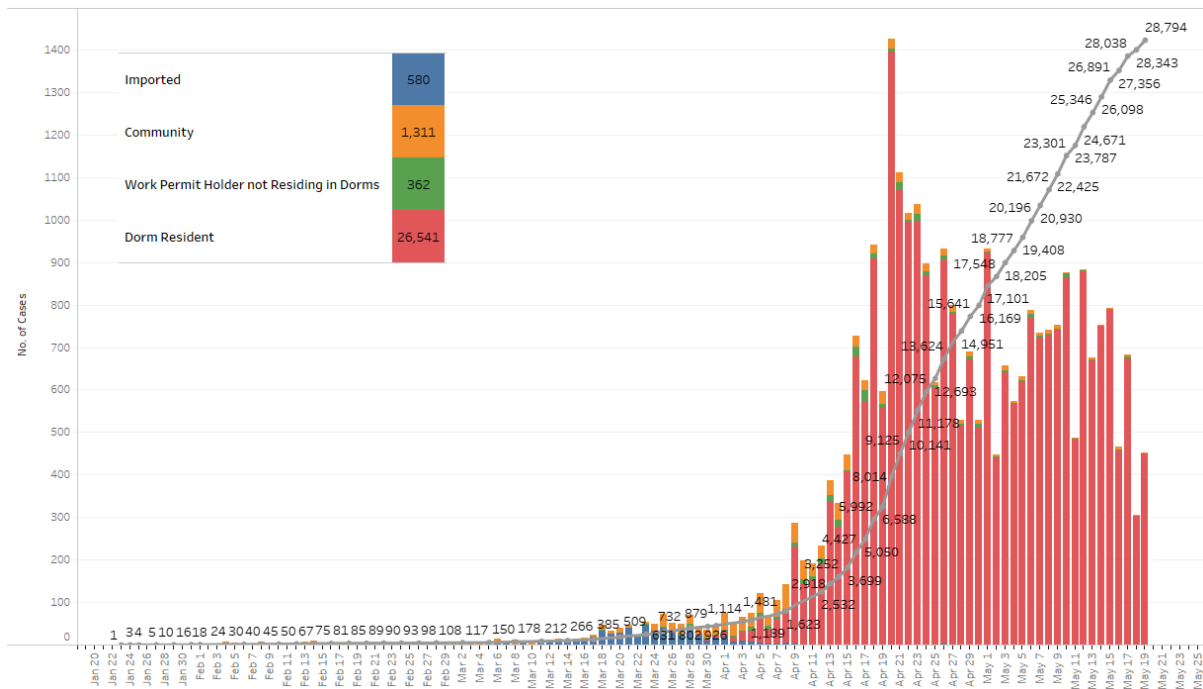


**19 May 2020 Daily Report on COVID-19****(1) Number of COVID-19 Cases****Figure 1.1:** Number of Cases Reported over the Past 14 Days

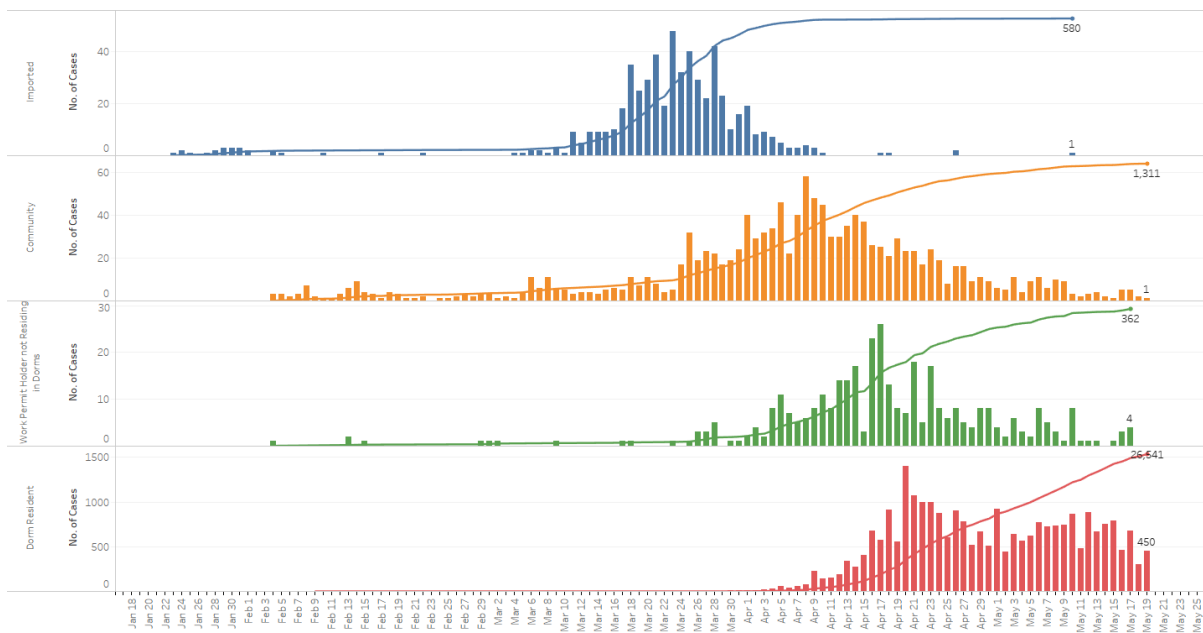
Press Release Date	Imported	Non-Imported Cases																Total Cases
		Community Cases (residents & pass holders excluding work permit holders and dorm residents)										Work permit holders not residing in dorms				Dorm Residents		
		Linked Cases				Unlinked Cases <sup>1</sup>				Sub-Total	Incidence Rate (per 100,000)	Linked Cases	Unlinked Cases <sup>2</sup>	Sub-Total	Incidence Rate (per 100,000)	No. of Cases	Incidence Rate (per 100,000)	
		SC/SPR	G or F	Visitor	Sub-Total	SC/SPR	G or F	Visitor	Sub-Total									
Before 6-May	579	648	124	4	776	402	65	4	471	1,247	-	221	105	326	-	17,256	-	19,408
6-May	0	8	0	0	8	3	0	0	3	11	0.23	4	4	8	1.2	769	240	788
7-May	0	2	2	0	4	2	0	0	2	6	0.13	2	3	5	0.75	723	220	734
8-May	0	6	0	0	6	4	0	0	4	10	0.21	1	2	3	0.45	729	230	742
9-May	0	7	0	0	7	2	0	0	2	9	0.19	1	0	1	0.15	743	230	753
10-May	1	2	0	0	2	0	1	0	1	3	0.064	7	1	8	1.2	864	270	876
11-May	0	2	0	0	2	0	0	0	0	2	0.042	1	0	1	0.15	483	150	486
12-May	0	1	0	0	1	2	0	0	2	3	0.064	1	0	1	0.15	880	270	884
13-May	0	1	0	0	1	1	2	0	3	4	0.085	0	1	1	0.15	670	210	675
14-May	0	2	0	0	2	0	0	0	0	2	0.042	0	0	0	0	750	230	752
15-May	0	0	0	0	0	1	0	0	1	1	0.021	1	0	1	0.15	791	240	793
16-May	0	4	0	0	4	0	1	0	1	5	0.11	3	0	3	0.45	457	140	465
17-May	0	1	0	0	1	3	1	0	4	5	0.11	2	2	4	0.60	673	210	682
18-May	0	1	0	0	1	1	0	0	1	2	0.042	0	0	0	0	303	94	305
19-May	0	1	0	0	1	0	0	0	0	1	0.021	0	0	0	0	450	140	451
Total since start of outbreak	580	686	126	4	816	421	70	4	495	1,311	-	244	118	362	-	26,541	-	28,794
Population at risk <sup>3</sup>										4,717,000				664,000		323,000		5,704,000
Prevalence										0.03%				0.05%		8.22%		0.50%

<sup>1</sup> Includes cases pending epi-investigation.<sup>2</sup> Includes cases pending epi-investigation.<sup>3</sup> Population at risk for community cases includes SC/PRs and other types of passes holders not residing in dormitories. Source: MOM and Singstat.

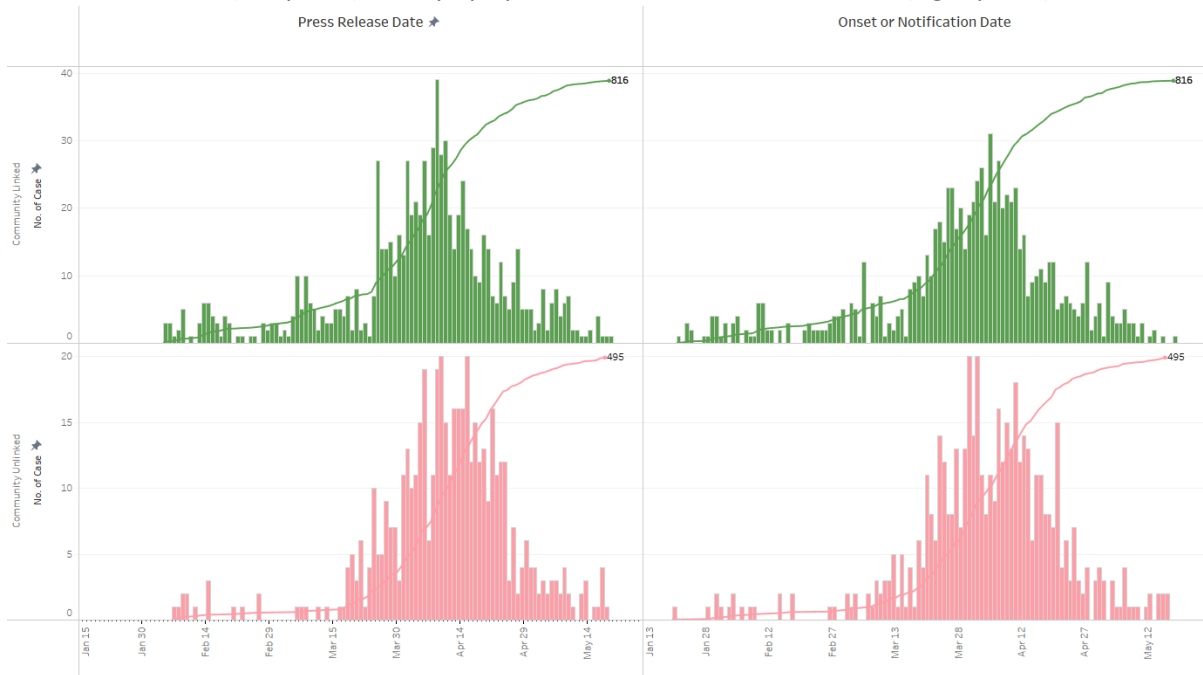
**Figure 1.2:** Epidemic Curve of the COVID-19 Outbreak by Press Release Date



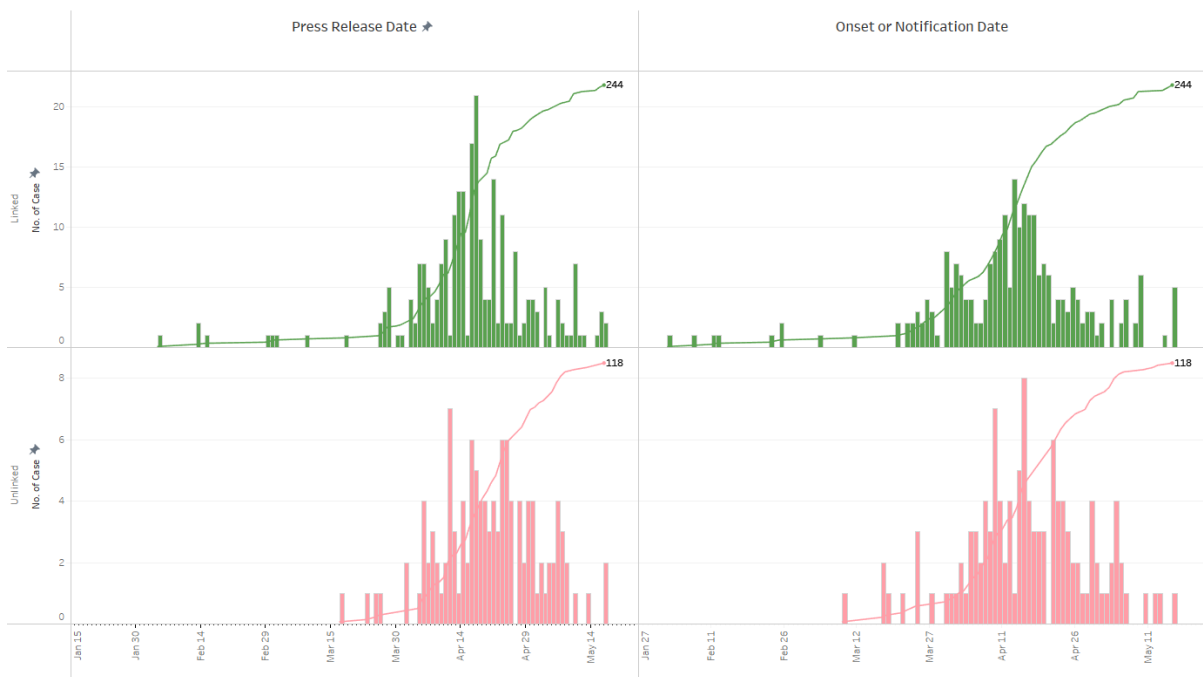
**Figure 1.3:** Epidemic Curve of the COVID-19 Outbreak by Press Release Date



**Figure 1.4:** Epidemic Curve of Linked and Unlinked Cases among the Community by Press Release Date (left panel) and by Symptom Onset or Notification Date<sup>4</sup> (right panel)



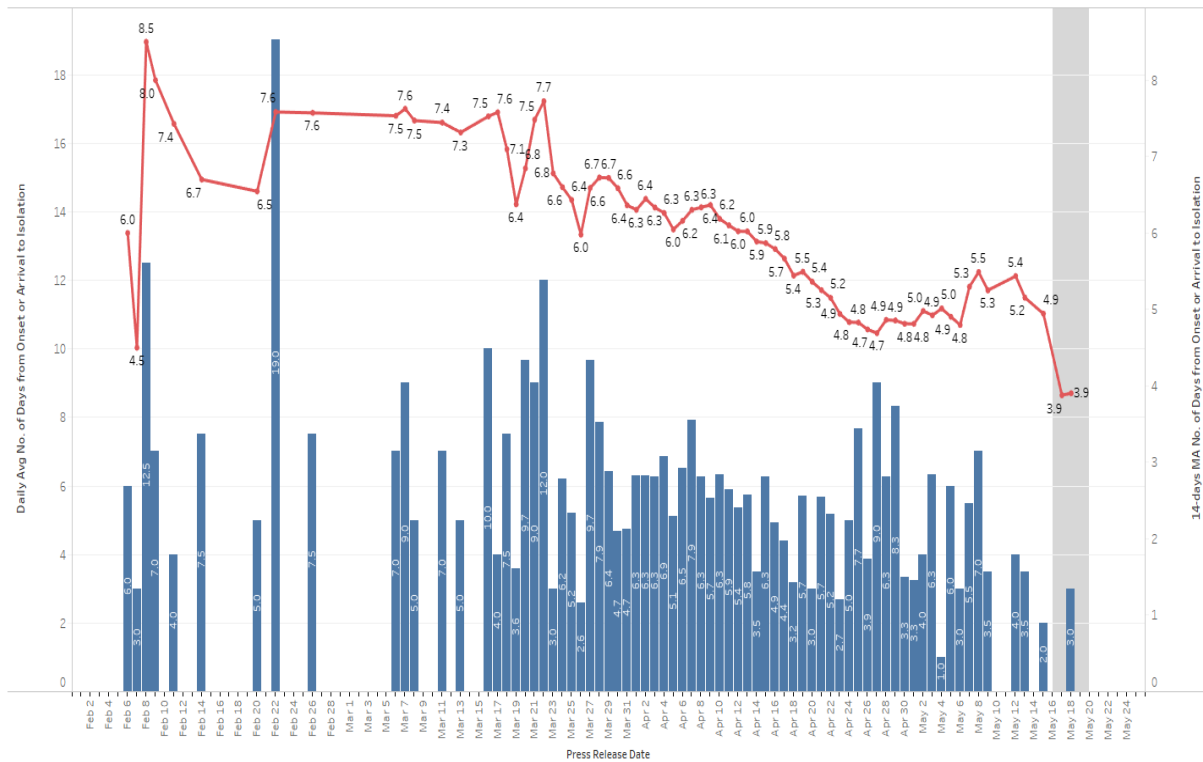
**Figure 1.5:** Epidemic Curve of Linked and Unlinked Cases among Work Permit Holders not Residing in Dorms by Press Release Date (left panel) and by Symptom Onset or Notification Date<sup>5</sup> (right panel)



<sup>4</sup> Date of notification was used for cases that did not display any symptoms. The numbers with onset in the past few days may see an increase as more cases are notified.

<sup>5</sup> Date of notification was used for cases that did not display any symptoms. The numbers with onset in the past few days may see an increase as more cases are notified.

**Figure 1.6:** Average Number of Days from Onset of Symptoms to Isolation (QO, MOH contact, notification or admission) for Community Unlinked Cases in Each Day<sup>6</sup>



Line represents the 14-day moving average, Bar represents the daily average.

<sup>6</sup> Area in grey demarcates the data points for the past 3 days where some cases are still pending investigation. The bar chart shows the daily average number of days from onset date to isolation, while the line chart shows the moving average for the past 14 days. Both charts exclude cases with missing onset dates in the computation of the average.

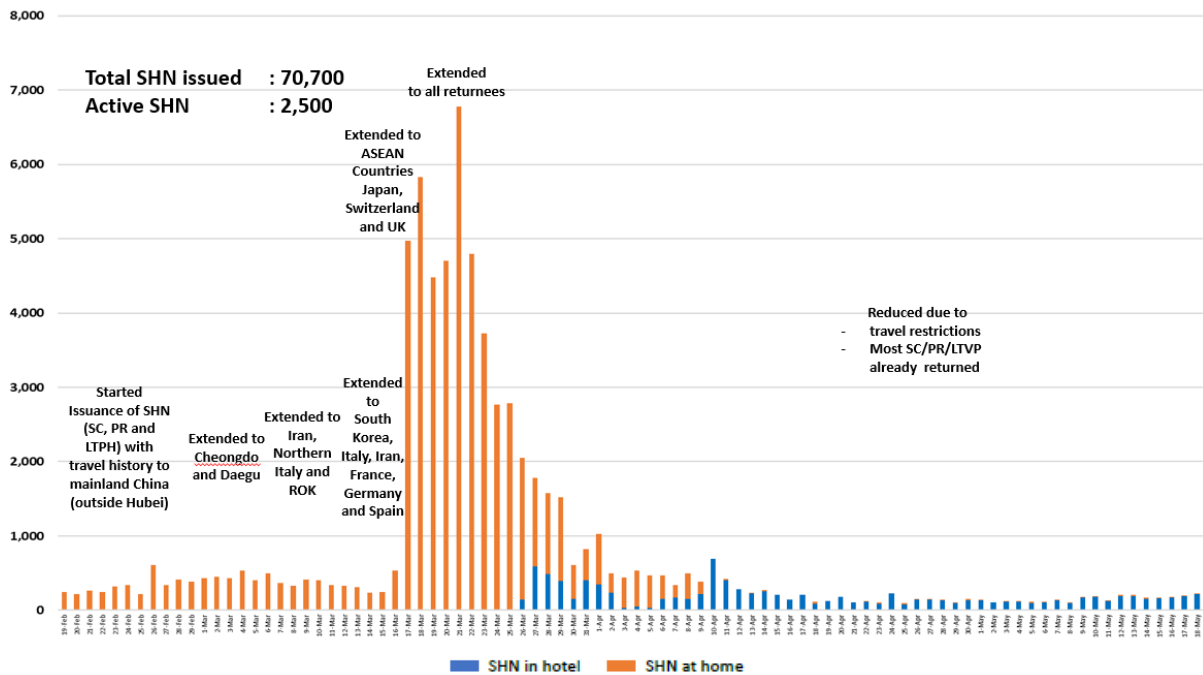
**(2) Number of COVID-19 Cases in Hospitals and Community Care Facilities****Figure 2.1:** Summary of Confirmed Cases by Status in the Past 14 Days

Press Release Date	Currently Admitted in Hospitals		In Care Facilities <sup>7</sup>	Total Recovered		Total Demised	Total
	ICU	General Wards		Completed Isolation	Discharged from Hospital		
6-May	23	1,439	17,082	860	774	20	20,198
7-May	19	1,357	17,831	896	816	20	20,939
8-May	22	1,223	18,402	1,205	835	20	21,707
9-May	23	1,101	19,020	1,442	854	20	22,460
10-May	22	1,075	19,498	1,836	885	20	23,336
11-May	24	1,069	19,448	2,322	903	21	23,787
12-May	20	1,112	19,667	2,927	924	21	24,671
13-May	19	1,018	19,479	3,858	951	21	25,346
14-May	20	1,052	19,032	4,978	995	21	26,098
15-May	18	1,106	18,498	6,229	1,019	21	26,891
16-May	16	1,095	17,881	7,309	1,033	22	27,356
17-May	16	1,194	17,466	8,286	1,054	22	28,038
18-May	12	1,024	17,450	8,776	1,059	22	28,343
19-May	10	994	17,403	9,284	1,081	22	28,794

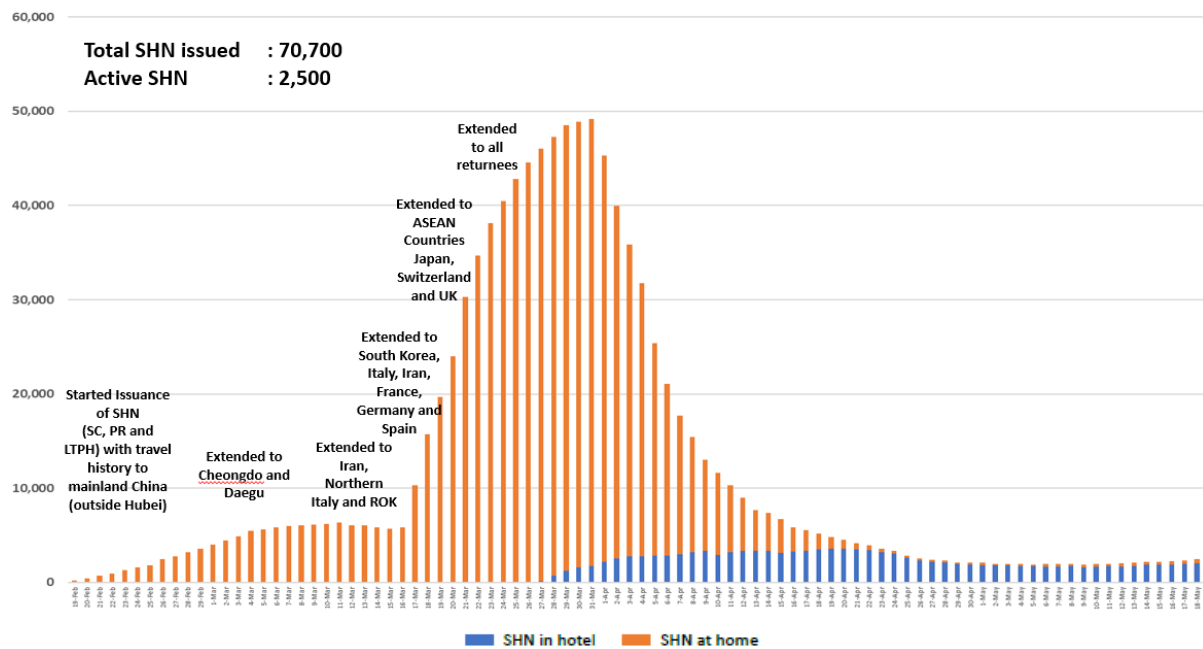
<sup>7</sup> Community Care Facilities (i.e. D'Resort, EXPO, Changi Exhibition Centre, Tuas South), Private Hospitals (i.e. Concord International Hospital, Mt Elizabeth Hospital, Gleneagles Hospital, Mt Alvernia Hospital, Mt Elizabeth Novena Hospital, Parkway East Hospital, Farrer Park Hospital), Community Hospitals (i.e. Bright Vision Hospital, St. Andrew's Community Hospital, Yishun Community Hospital, Jurong Community Hospital, Sengkang Community Hospital) and other care facilities.

### (3) Number of Stay-Home-Notice (SHN) Issued

**Figure 3.1:** Daily Number of SHN issued

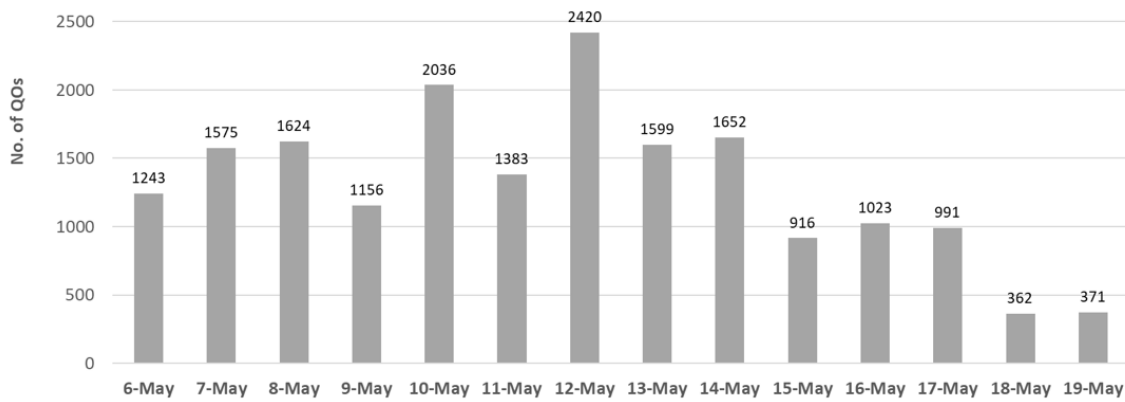


**Figure 3.2:** Active Stock Number of SHN (Home) and SHN (Hotel)



#### (4) Number of Quarantine Order (QO) Issued

**Figure 4.1:** Daily Number of QOs Issued



**Figure 4.2:** Active Number of Persons Under Quarantine (PUQs)

