

21 November 2020 Daily Report on COVID-19

(1) Number of COVID-19 Cases

Figure 1.1: Breakdown of New Confirmed Cases in the Past 14 Days

Press Release Date	Imported			Non-Imported Cases														All Cases	
	Isolated before Detection	Detected through Surveillance ²	Sub-Total	Community Cases								Dorm Residents ¹							
				Isolated before Detection ³				Detected through Surveillance ⁴				Sub-Total	Incidence Rate ⁵ (per 100,000)	Isolated before Detection ³	Detected through Surveillance ⁴	No. of Cases	Incidence Rate ⁵ (per 100,000)		
				SC/PR	G or F	Visitor	Sub-Total	SC/PR	G or F	Visitor	Sub-Total								
Before 8-Nov	1,010	273	1,283	367	265	1	633	991	635	11	1,637	2,270	-	54,501		54,501	-	58,054	
8-Nov	2	0	2	0	0	0	0	0	0	0	0	0	0	0	0	0	0	0	2
9-Nov	8	0	8	0	0	0	0	0	0	0	0	0	0	0	0	0	0	0	8
10-Nov	7	0	7	0	0	0	0	0	1	0	1	1	0.019	0	1	1	0.31	9	
11-Nov	18	0	18	0	0	0	0	0	0	0	0	0	0	0	0	0	0	18	
12-Nov	11	0	11	0	0	0	0	0	0	0	0	0	0	0	0	0	0	11	
13-Nov	12	0	12	0	0	0	0	0	0	0	0	0	0	0	0	0	0	12	
14-Nov	2	0	2	0	0	0	0	0	0	0	0	0	0	0	0	0	0	2	
15-Nov	3	0	3	0	0	0	0	0	0	0	0	0	0	0	0	0	0	3	
16-Nov	5	0	5	0	0	0	0	0	0	0	0	0	0	0	0	0	0	5	
17-Nov	6	0	6	0	0	0	0	0	0	0	0	0	0	0	0	0	0	6	
18-Nov	5	0	5	0	0	0	0	0	0	0	0	0	0	0	0	0	0	5	
19-Nov	4	0	4	0	0	0	0	0	0	0	0	0	0	0	0	0	0	4	
20-Nov	4	0	4	0	0	0	0	0	0	0	0	0	0	0	0	0	0	4	
21-Nov	5	0	5	0	0	0	0	0	0	0	0	0	0	0	0	0	0	5	
Total since start of outbreak	1,102	273	1,375	367	265	1	633	991	636	11	1,638	2,271	-	54,502		54,502	-	58,148	
Population at risk												5,381,000				323,000		5,704,000	
Prevalence												0.04%				16.87%		1.02%	

Notes
¹ Includes PRs and visitors residing in dorms. Breakdown of dorm cases into those detected through surveillance and those isolated before detection is not available before 24 Aug.
² 272 cases were reported before early Apr, and constitute the 1st wave of imported cases. 1 case in Oct tested negative during his 14-day SHN and was subsequently identified as a positive case through a pre-departure swab test.
³ Cases who were already quarantined and tested during quarantine to determine their status.
⁴ Cases who were identified through surveillance testing, such as the bi-weekly Rostered Routine Testing (RRT) of at-risk workers and testing of those with Acute Respiratory Illness (ARI) symptoms.
⁵ Incidence rates are rounded to two significant figures.

Figure 1.2: Epidemic Curve of the COVID-19 Outbreak by Press Release Date

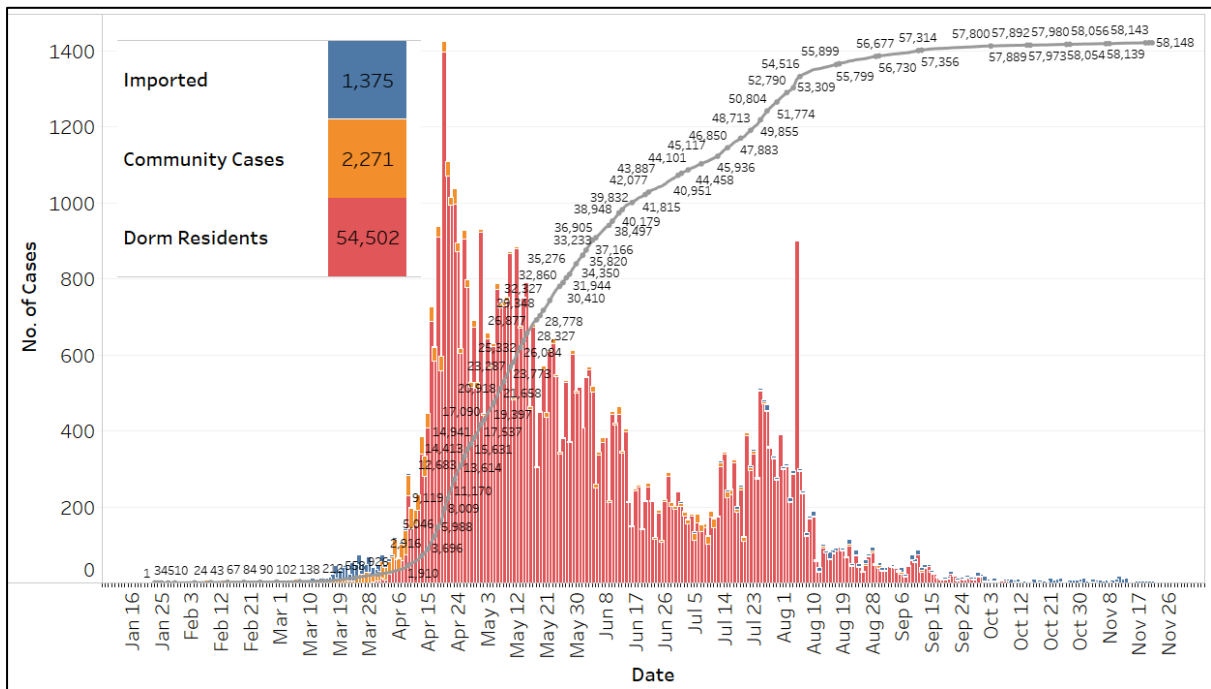


Figure 1.3: Epidemic Split Curve of the COVID-19 Outbreak by Press Release Date

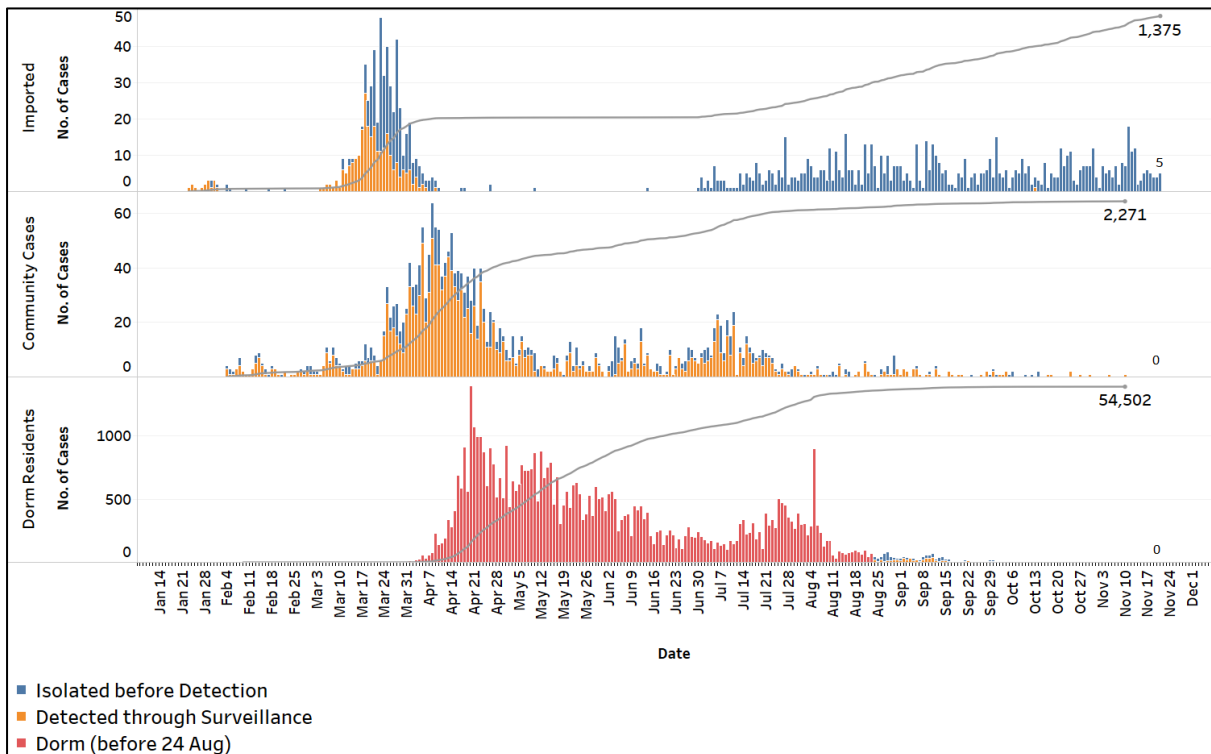


Figure 1.4: Epidemic Curve of Imported Cases by Press Release Date (left panel) and Arrival Date (right panel)

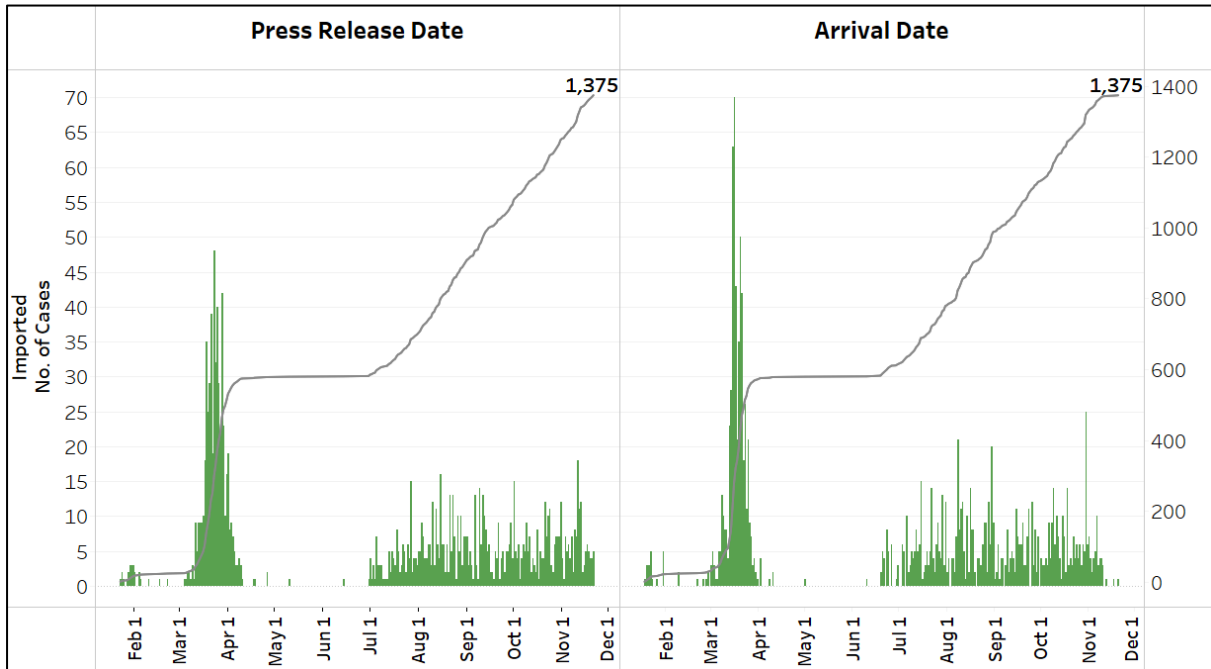
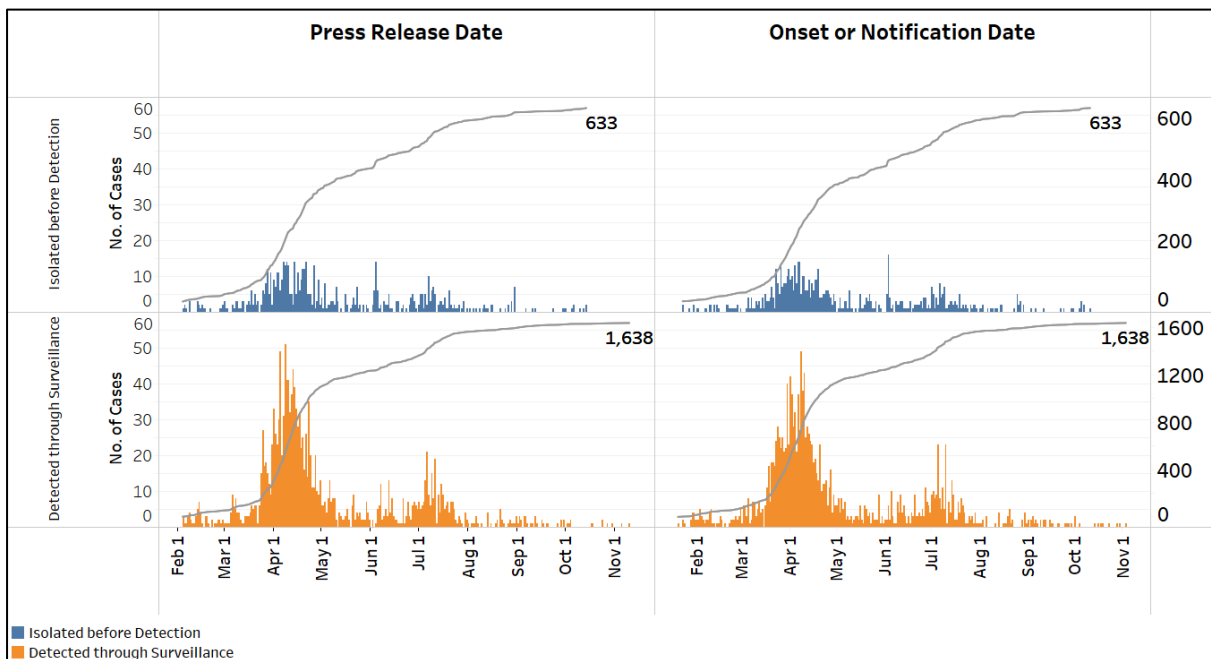
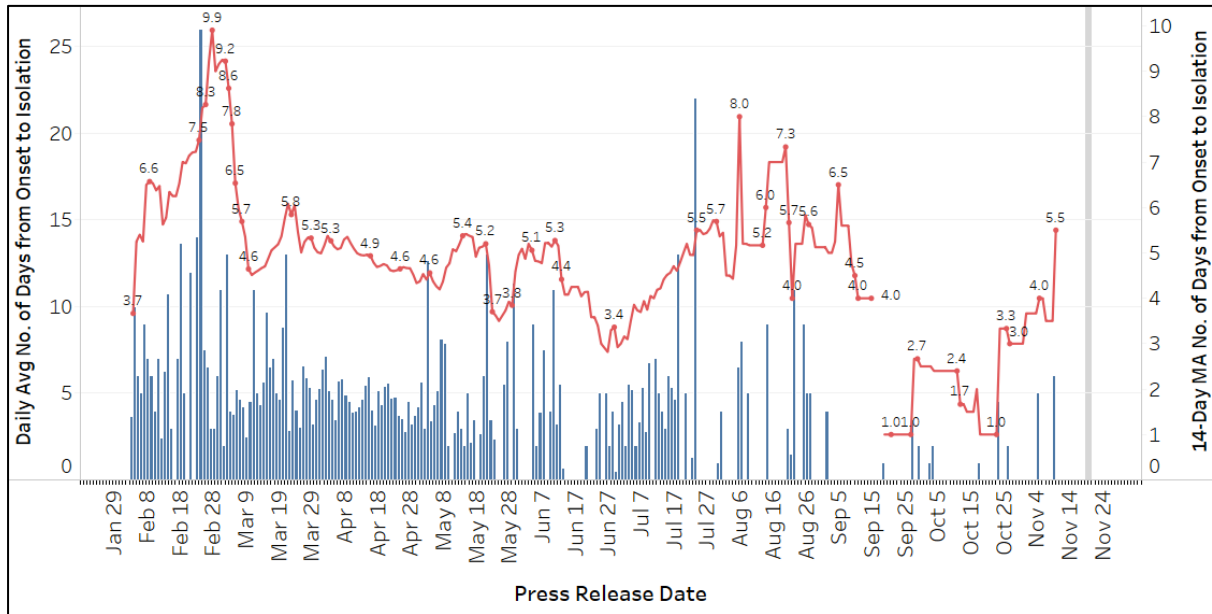


Figure 1.5: Epidemic Curve of Community Cases by Press Release Date (left panel) and by Symptom Onset or Notification Date¹ (right panel)



¹ Date of notification was used for cases that did not display any symptoms. The numbers with onset in the past few days may see an increase as more cases are notified.

Figure 1.6: Average Number of Days from Onset of Symptoms to Isolation (QO, hospital admission or notification to MOH) for Community Cases Detected through Surveillance in Each Day



Line represents the 14-day moving average; Bar represents the daily average²

² Area in grey demarcates data points for the past 3 days where some cases may still be pending epidemiological investigation. The bar graph shows the daily average number of days from symptoms onset to isolation, while the line graph shows the moving average for the past 14 days. Both graphs exclude cases with no onset date (asymptomatic) in the computation of the average. Community cases with symptoms who are isolated on the same day that symptoms occurred would have an isolation time of 0. There is a gap in the line graph from 16 to 18 Sep as there are no symptomatic cases in the preceding 14 days.

(2) Number of COVID-19 Cases in Hospitals and Community Care Facilities**Figure 2.1:** Summary of Confirmed Cases by Status in the Past 14 Days

Press Release Date	Currently Admitted in Hospitals		In Care Facilities ³	Total Recovered		Total Demised	Total
	ICU	General Wards		Completed Isolation	Discharged from Hospital		
8-Nov	0	33	20	55,348	2,627	28	58,056
9-Nov	0	34	21	55,353	2,628	28	58,064
10-Nov	0	40	20	55,355	2,630	28	58,073
11-Nov	0	33	40	55,358	2,632	28	58,091
12-Nov	0	48	24	55,363	2,639	28	58,102
13-Nov	0	50	28	55,365	2,643	28	58,114
14-Nov	0	47	22	55,366	2,653	28	58,116
15-Nov	0	41	21	55,369	2,660	28	58,119
16-Nov	0	40	23	55,369	2,664	28	58,124
17-Nov	0	37	26	55,370	2,669	28	58,130
18-Nov	0	33	28	55,375	2,671	28	58,135
19-Nov	1	27	31	55,378	2,674	28	58,139
20-Nov	1	25	31	55,381	2,677	28	58,143
21-Nov	1	21	34	55,384	2,680	28	58,148

³ Community Care Facilities (i.e. D'Resort, EXPO), Private Hospitals (i.e. Concord International Hospital, Mt Elizabeth Hospital, Gleneagles Hospital, Mt Elizabeth Novena Hospital, Parkway East Hospital), Community Hospitals (i.e. Bright Vision Hospital) and other care facilities.

(3) Number of Stay-Home-Notice (SHN) Issued

Figure 3.1: Daily Number of SHN issued

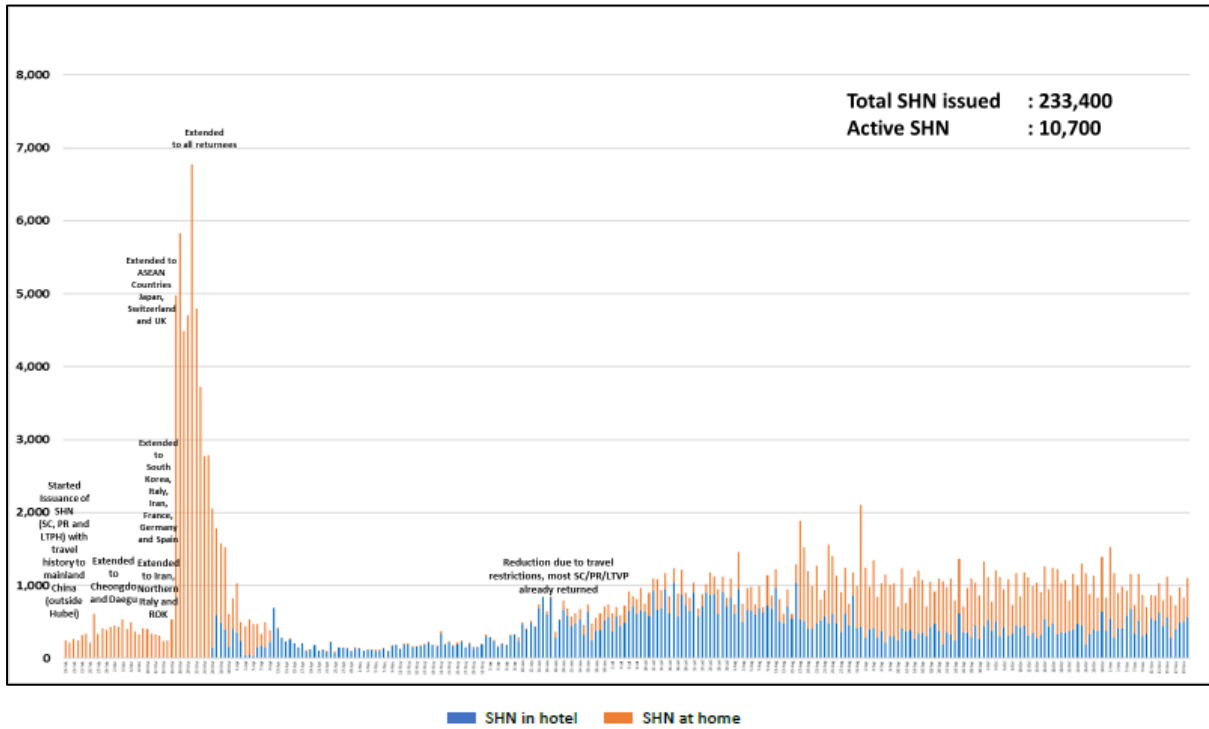
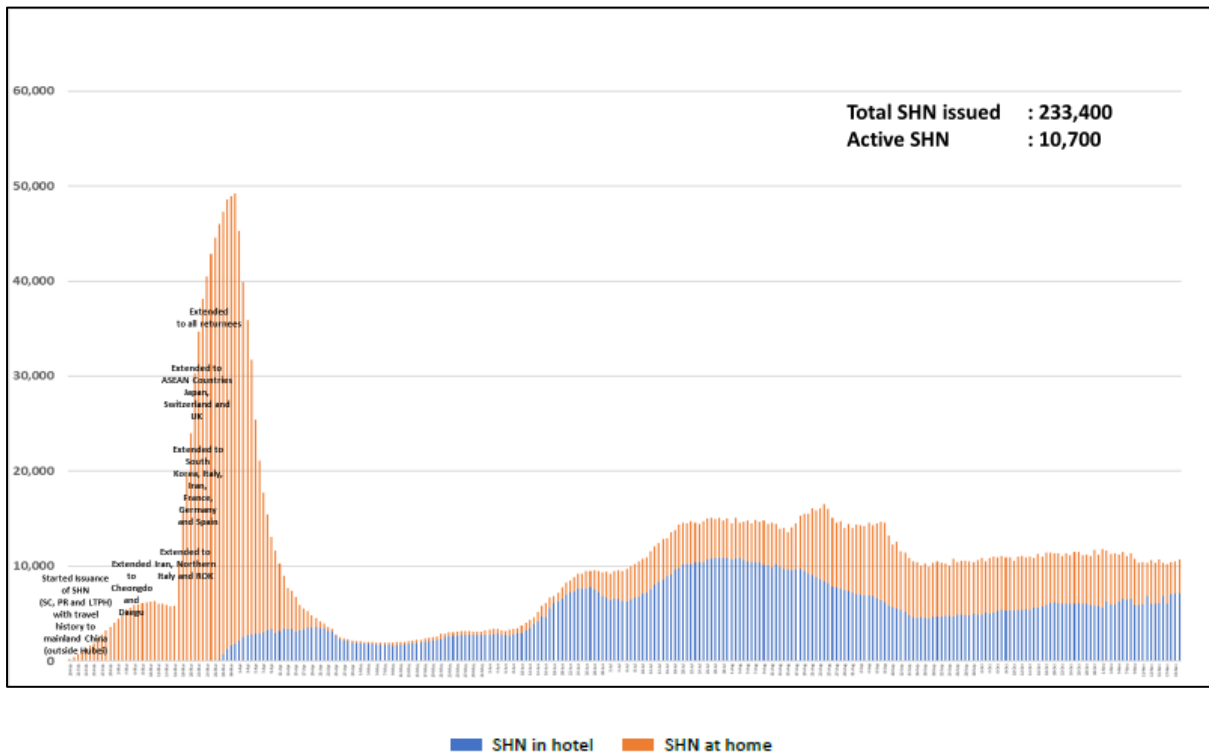


Figure 3.2: Active Stock Number of SHN (Home) and SHN (Hotel)



(4) Number of Quarantine Orders (QO) Issued

Figure 4.1: Daily Number of QOs Issued

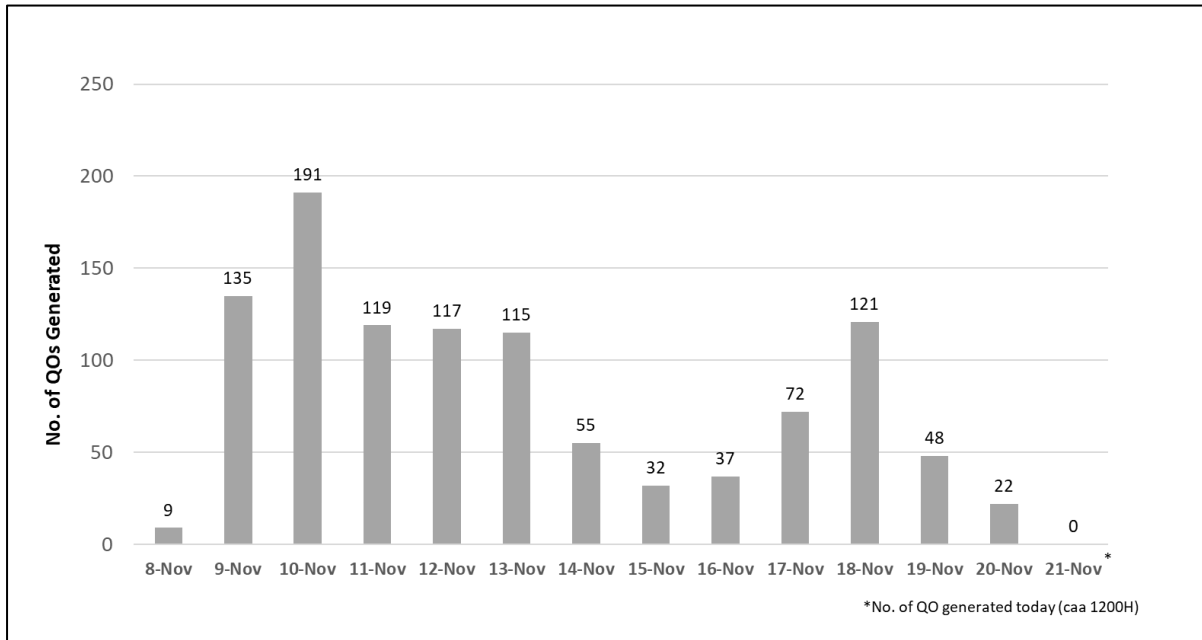


Figure 4.2: Active Number of Persons Under Quarantine (PUQs)

