

21 October 2020 Daily Report on COVID-19**(1) Number of COVID-19 Cases****Figure 1.1:** Breakdown of New Confirmed Cases in the Past 14 Days

Press Release Date	Imported			Non-Imported Cases														All Cases
				Community Cases								Dorm Residents ¹						
	Isolated before Detection	Detected through Surveillance ²	Sub-Total	Isolated before Detection ³				Detected through Surveillance ⁴				Sub-Total	Incidence Rate ⁵ (per 100,000)	Isolated before Detection ³	Detected through Surveillance ⁴	No. of Cases	Incidence Rate ⁵ (per 100,000)	
				SC/PR	G or F	Visitor	Sub-Total	SC/PR	G or F	Visitor	Sub-Total							
Before 8-Oct	834	272	1,106	364	264	1	629	988	633	9	1,630	2,259	-	54,475		54,475	-	57,840
8-Oct	5	0	5	0	0	0	0	0	0	0	0	0	0	1	3	4	1.2	9
9-Oct	9	0	9	0	0	0	0	0	0	0	0	0	0	1	0	1	0.31	10
10-Oct	5	0	5	1	0	0	1	0	0	0	0	1	0.019	0	1	1	0.31	7
11-Oct	7	0	7	0	0	0	0	0	0	0	0	0	0	2	1	3	0.93	10
12-Oct	2	0	2	0	1	0	1	0	0	0	0	1	0.019	1	0	1	0.31	4
13-Oct	3	1	4	0	0	0	0	0	0	0	0	0	0	0	0	0	0	4
14-Oct	3	0	3	2	0	0	2	0	0	0	0	2	0.037	0	0	0	0	5
15-Oct	2	0	2	0	0	0	0	0	0	0	0	0	0	0	1	1	0.31	3
16-Oct	8	0	8	0	0	0	0	0	0	0	0	0	0	0	1	1	0.31	9
17-Oct	1	0	1	0	0	0	0	0	1	0	1	1	0.019	0	1	1	0.31	3
18-Oct	5	0	5	0	0	0	0	0	1	0	1	1	0.019	0	1	1	0.31	7
19-Oct	4	0	4	0	0	0	0	0	0	0	0	0	0	0	0	0	0	4
20-Oct	4	0	4	0	0	0	0	0	0	0	0	0	0	1	1	2	0.62	6
21-Oct	12	0	12	0	0	0	0	0	0	0	0	0	0	0	0	0	0	12
Total since start of outbreak	904	273	1,177	367	265	1	633	988	635	9	1,632	2,265	-	54,491		54,491	-	57,933
Population at risk												5,381,000				323,000		5,704,000
Prevalence												0.04%				16.87%		1.02%

Notes

¹ Includes PRs and visitors residing in dorms. Breakdown of dorm cases into those detected through surveillance and those isolated before detection is not available before 24 Aug.

² 272 cases were reported before early Apr, and constitute the 1st wave of imported cases. 1 case in Oct tested negative during his 14-day SHN and was subsequently identified as a positive case through a pre-departure swab test.

³ Cases who were already quarantined and tested during quarantine to determine their status.

⁴ Cases who were identified through surveillance testing, such as the bi-weekly Rostered Routine Testing (RRT) of at-risk workers and testing of those with Acute Respiratory Illness (ARI) symptoms.

⁵ Incidence rates are rounded to two significant figures.

Figure 1.2: Epidemic Curve of the COVID-19 Outbreak by Press Release Date

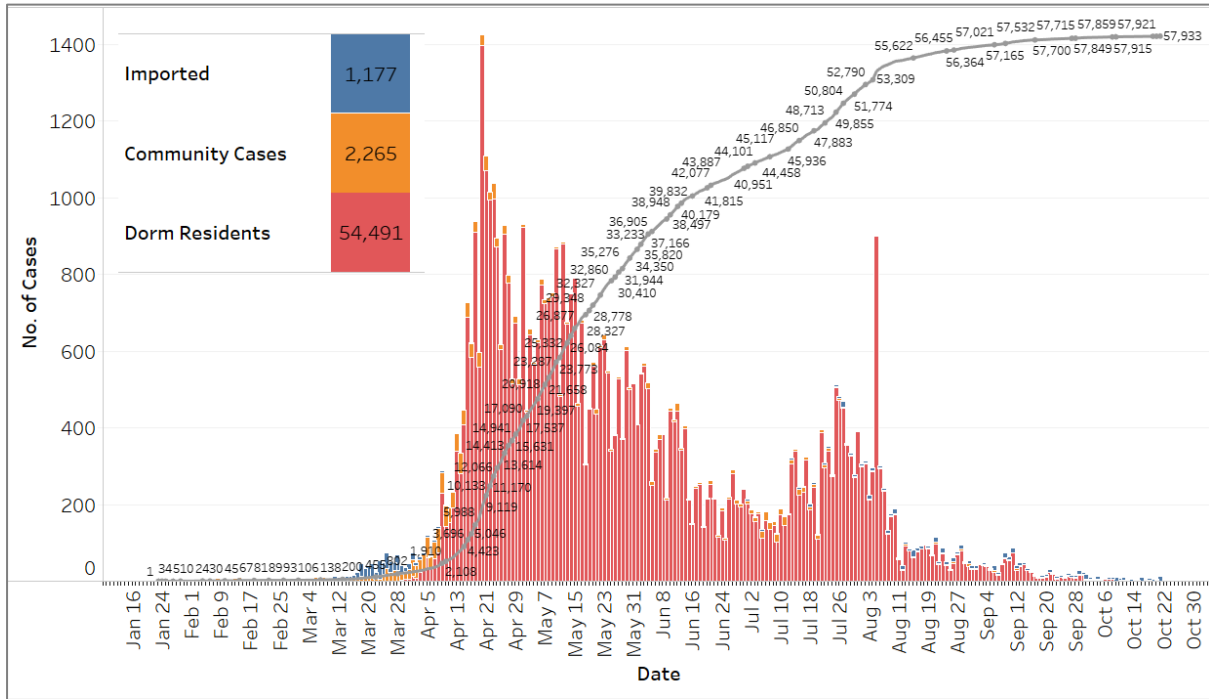


Figure 1.3: Epidemic Split Curve of the COVID-19 Outbreak by Press Release Date

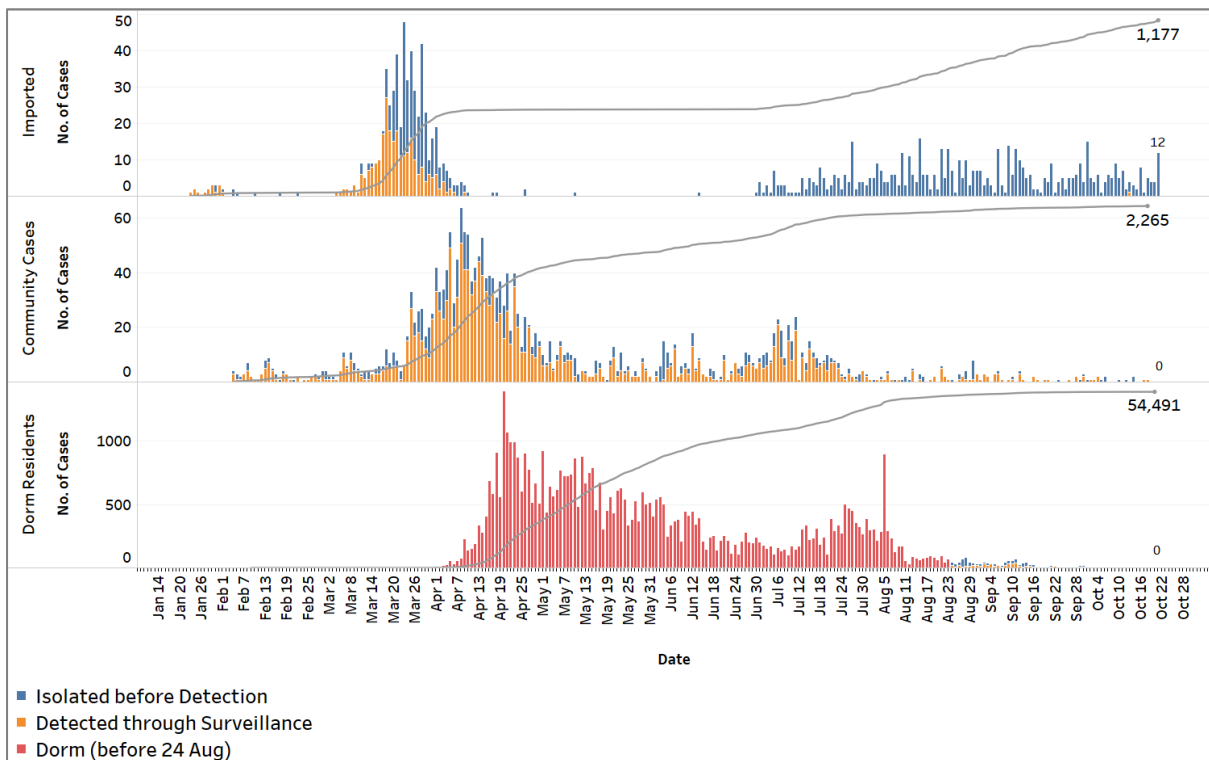


Figure 1.4: Epidemic Curve of Imported Cases by Press Release Date (left panel) and Arrival Date (right panel)

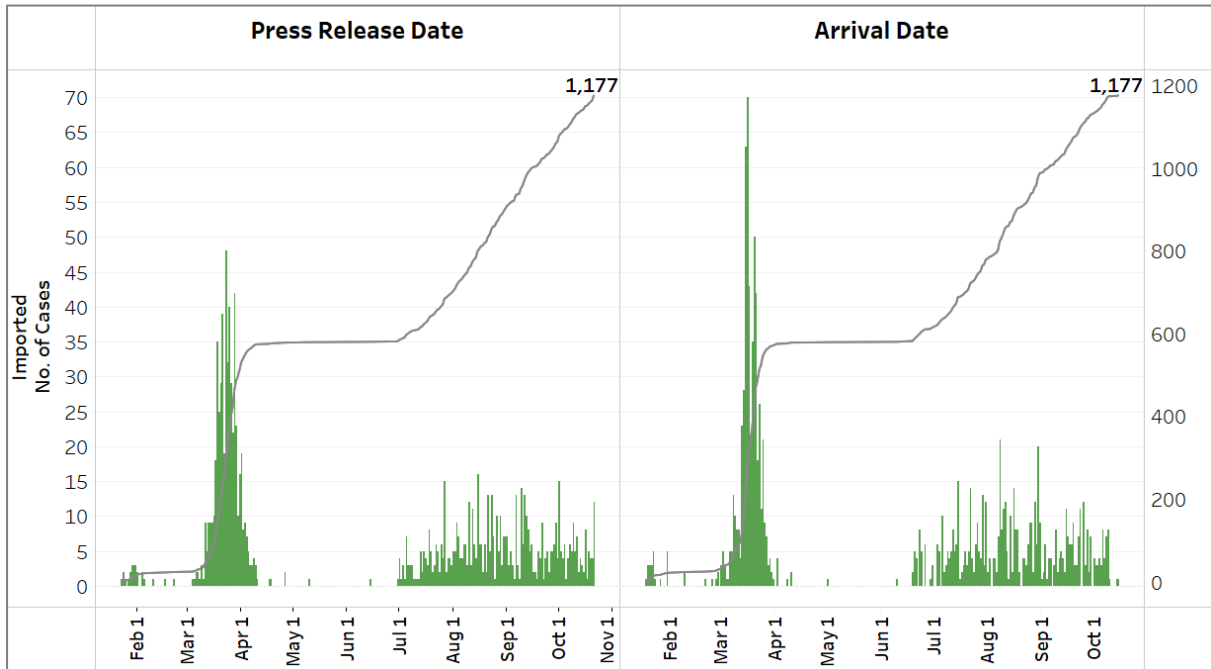
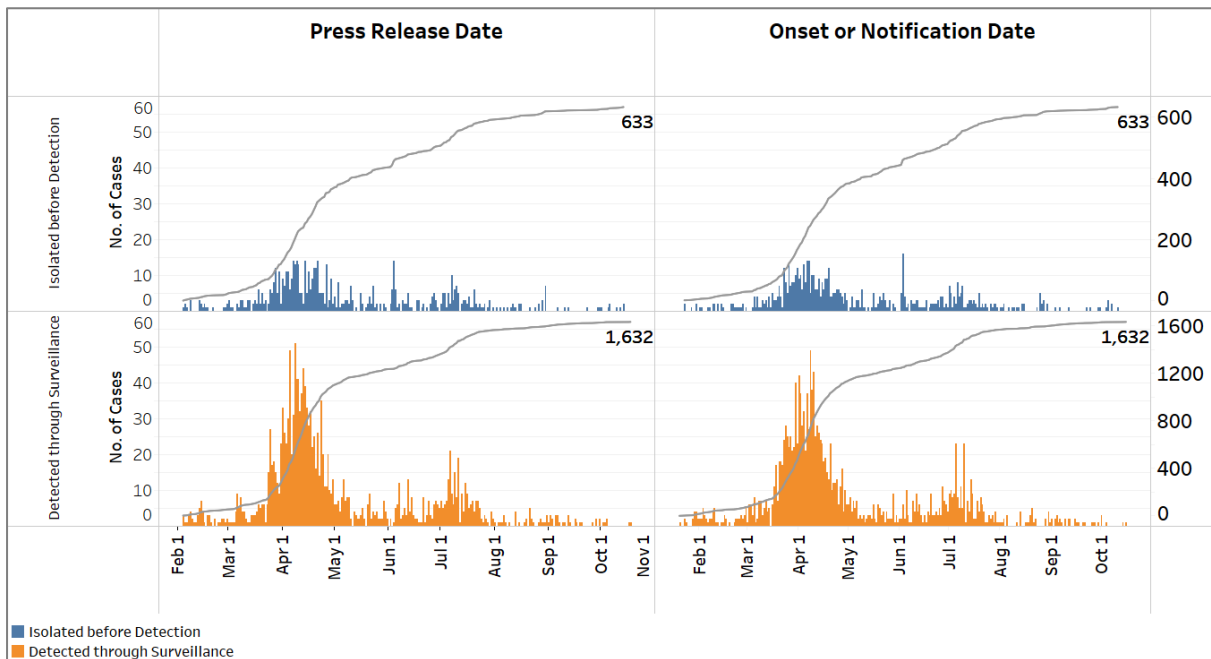
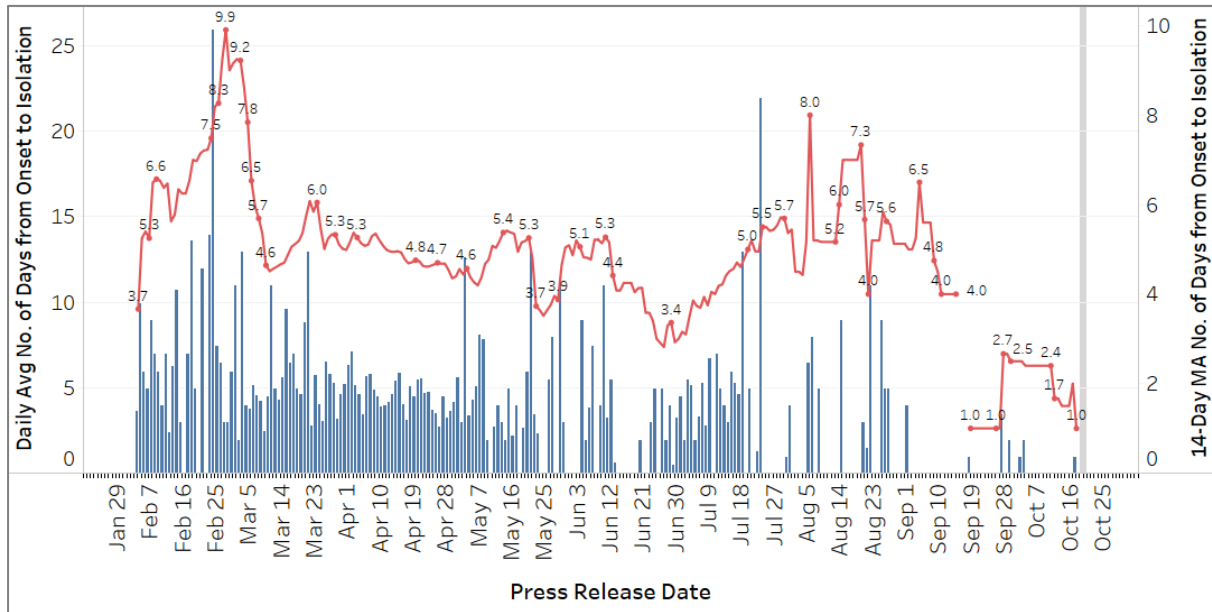


Figure 1.5: Epidemic Curve of Community Cases by Press Release Date (left panel) and by Symptom Onset or Notification Date¹ (right panel)



¹ Date of notification was used for cases that did not display any symptoms. The numbers with onset in the past few days may see an increase as more cases are notified.

Figure 1.6: Average Number of Days from Onset of Symptoms to Isolation (QO, hospital admission or notification to MOH) for Community Cases Detected through Surveillance in Each Day



Line represents the 14-day moving average; Bar represents the daily average²

² Area in grey demarcates data points for the past 3 days where some cases may still be pending epidemiological investigation. The bar graph shows the daily average number of days from symptoms onset to isolation, while the line graph shows the moving average for the past 14 days. Both graphs exclude cases with no onset date (asymptomatic) in the computation of the average. Community cases with symptoms who are isolated on the same day that symptoms occurred would have an isolation time of 0. There is a gap in the line graph from 16 to 18 Sep as there are no symptomatic cases in the preceding 14 days.

(2) Number of COVID-19 Cases in Hospitals and Community Care Facilities

Figure 2.1: Summary of Confirmed Cases by Status in the Past 14 Days

Press Release Date	Currently Admitted in Hospitals		In Care Facilities ³	Total Recovered		Total Demised	Total
	ICU	General Wards		Completed Isolation	Discharged from Hospital		
8-Oct	1	34	119	55,171	2,497	27	57,849
9-Oct	1	36	120	55,173	2,502	27	57,859
10-Oct	1	39	101	55,192	2,506	27	57,866
11-Oct	1	43	100	55,196	2,509	27	57,876
12-Oct	0	48	76	55,215	2,513	28	57,880
13-Oct	0	35	81	55,223	2,517	28	57,884
14-Oct	0	39	70	55,231	2,521	28	57,889
15-Oct	0	36	64	55,239	2,525	28	57,892
16-Oct	0	30	59	55,257	2,527	28	57,901
17-Oct	0	37	41	55,270	2,528	28	57,904
18-Oct	0	40	36	55,278	2,529	28	57,911
19-Oct	0	34	34	55,281	2,538	28	57,915
20-Oct	0	38	36	55,281	2,538	28	57,921
21-Oct	0	43	41	55,283	2,538	28	57,933

³ Community Care Facilities (i.e. D'Resort, EXPO, Big Box), Private Hospitals (i.e. Concord International Hospital, Mt Elizabeth Hospital, Gleneagles Hospital, Mt Elizabeth Novena Hospital, Parkway East Hospital), Community Hospitals (i.e. Bright Vision Hospital) and other care facilities.

(3) Number of Stay-Home-Notice (SHN) Issued

Figure 3.1: Daily Number of SHN issued

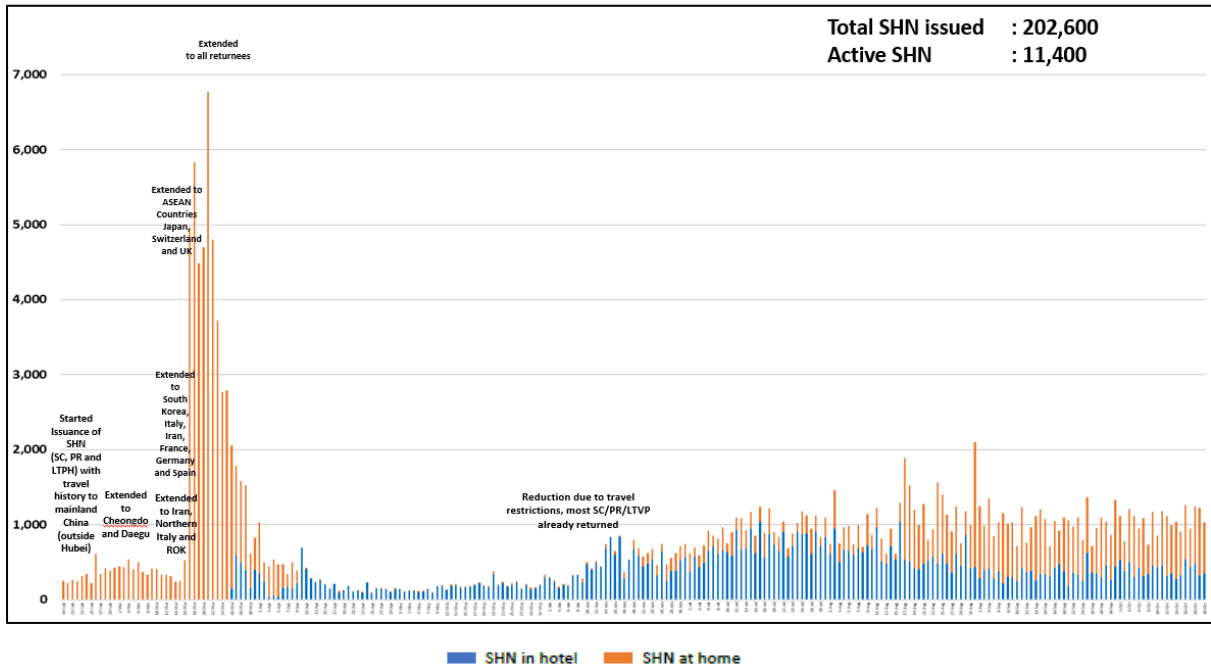
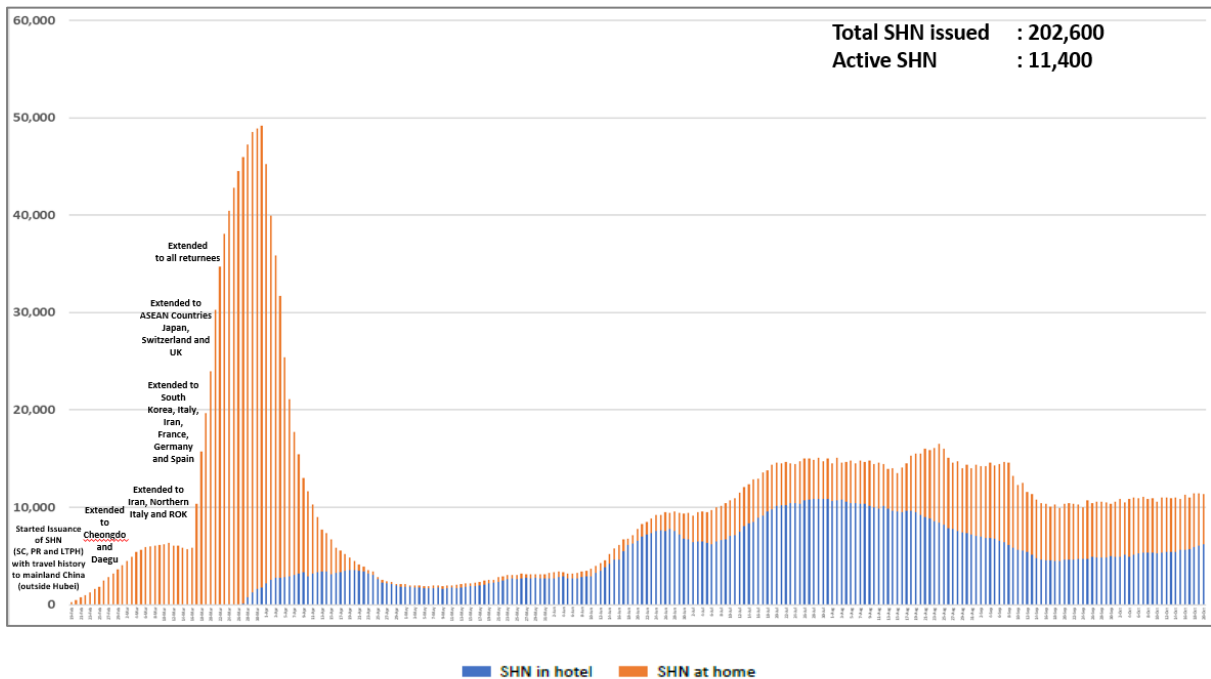


Figure 3.2: Active Stock Number of SHN (Home) and SHN (Hotel)



(4) Number of Quarantine Order (QO) Issued

Figure 4.1: Daily Number of QOs Issued

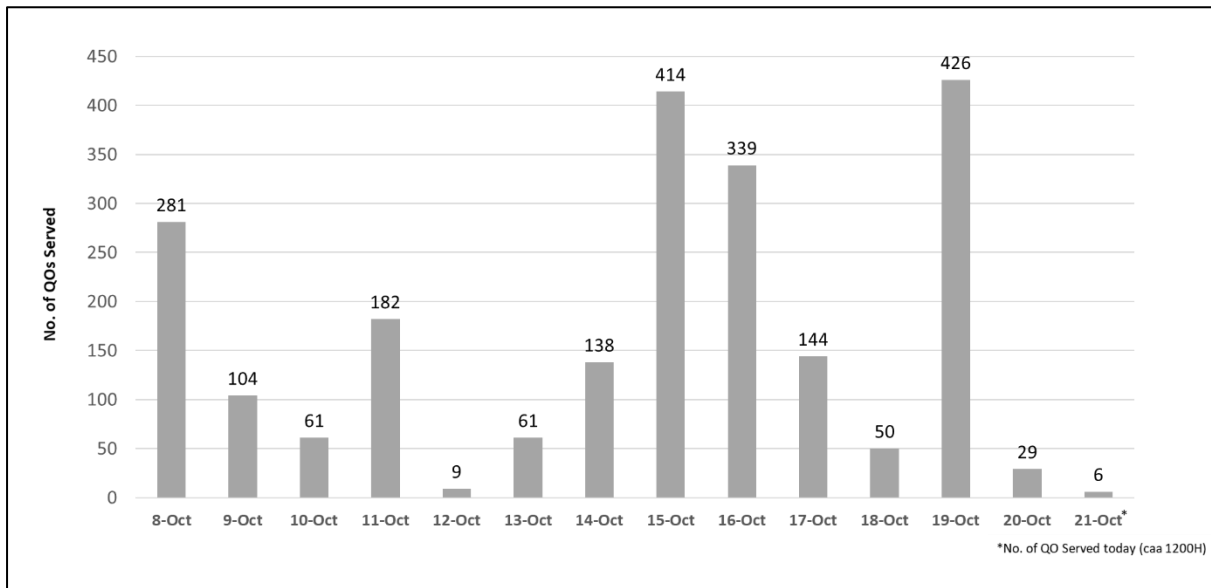


Figure 4.2: Active Number of Persons Under Quarantine (PUQs)

