

**23 June 2021 Daily Report on COVID-19****(1) Number of COVID-19 Cases****Figure 1.1:** Breakdown of New Confirmed Cases in the Past 14 Days

| Press Release Date            | Imported                  |                                            |           | Non-Imported Cases                     |        |         |           |                                            |        |         |           |                             |                                           |                                        |                                            |              |                                           | All Cases |
|-------------------------------|---------------------------|--------------------------------------------|-----------|----------------------------------------|--------|---------|-----------|--------------------------------------------|--------|---------|-----------|-----------------------------|-------------------------------------------|----------------------------------------|--------------------------------------------|--------------|-------------------------------------------|-----------|
|                               |                           |                                            |           | Community Cases                        |        |         |           |                                            |        |         |           | Dorm Residents <sup>1</sup> |                                           |                                        |                                            |              |                                           |           |
|                               | Isolated before Detection | Detected through Surveillance <sup>2</sup> | Sub-Total | Isolated before Detection <sup>3</sup> |        |         |           | Detected through Surveillance <sup>4</sup> |        |         |           | Sub-Total                   | Incidence Rate <sup>5</sup> (per 100,000) | Isolated before Detection <sup>3</sup> | Detected through Surveillance <sup>4</sup> | No. of Cases | Incidence Rate <sup>5</sup> (per 100,000) |           |
|                               |                           |                                            |           | SC/PR                                  | G or F | Visitor | Sub-Total | SC/PR                                      | G or F | Visitor | Sub-Total |                             |                                           |                                        |                                            |              |                                           |           |
| Before 10-Jun                 | 4,366                     | 329                                        | 4,695     | 678                                    | 367    | 7       | 1,052     | 1,210                                      | 730    | 11      | 1,951     | 3,003                       | -                                         | 54,525                                 |                                            | 54,525       | -                                         | 62,223    |
| 10-Jun                        | 9                         | 0                                          | 9         | 1                                      | 0      | 0       | 1         | 1                                          | 2      | 0       | 3         | 4                           | 0.074                                     | 0                                      | 0                                          | 0            | 0                                         | 13        |
| 11-Jun                        | 6                         | 0                                          | 6         | 0                                      | 0      | 0       | 0         | 2                                          | 1      | 0       | 3         | 3                           | 0.056                                     | 0                                      | 0                                          | 0            | 0                                         | 9         |
| 12-Jun                        | 9                         | 0                                          | 9         | 0                                      | 3      | 0       | 3         | 3                                          | 3      | 0       | 6         | 9                           | 0.17                                      | 0                                      | 0                                          | 0            | 0                                         | 18        |
| 13-Jun                        | 3                         | 0                                          | 3         | 4                                      | 1      | 0       | 5         | 3                                          | 2      | 0       | 5         | 10                          | 0.19                                      | 0                                      | 0                                          | 0            | 0                                         | 13        |
| 14-Jun                        | 6                         | 0                                          | 6         | 7                                      | 5      | 0       | 12        | 5                                          | 0      | 1       | 6         | 18                          | 0.33                                      | 1                                      | 0                                          | 1            | 0.31                                      | 25        |
| 15-Jun                        | 0                         | 0                                          | 0         | 3                                      | 2      | 0       | 5         | 7                                          | 2      | 0       | 9         | 14                          | 0.26                                      | 0                                      | 0                                          | 0            | 0                                         | 14        |
| 16-Jun                        | 5                         | 0                                          | 5         | 9                                      | 1      | 0       | 10        | 6                                          | 3      | 0       | 9         | 19                          | 0.35                                      | 0                                      | 0                                          | 0            | 0                                         | 24        |
| 17-Jun                        | 7                         | 0                                          | 7         | 10                                     | 2      | 2       | 14        | 6                                          | 0      | 0       | 6         | 20                          | 0.37                                      | 0                                      | 0                                          | 0            | 0                                         | 27        |
| 18-Jun                        | 2                         | 0                                          | 2         | 5                                      | 0      | 0       | 5         | 7                                          | 2      | 0       | 9         | 14                          | 0.26                                      | 0                                      | 0                                          | 0            | 0                                         | 16        |
| 19-Jun                        | 7                         | 0                                          | 7         | 6                                      | 1      | 0       | 7         | 4                                          | 3      | 0       | 7         | 14                          | 0.26                                      | 0                                      | 0                                          | 0            | 0                                         | 21        |
| 20-Jun                        | 2                         | 0                                          | 2         | 2                                      | 1      | 0       | 3         | 5                                          | 1      | 0       | 6         | 9                           | 0.17                                      | 0                                      | 0                                          | 0            | 0                                         | 11        |
| 21-Jun                        | 3                         | 0                                          | 3         | 3                                      | 2      | 0       | 5         | 5                                          | 3      | 0       | 8         | 13                          | 0.24                                      | 0                                      | 0                                          | 0            | 0                                         | 16        |
| 22-Jun                        | 3                         | 0                                          | 3         | 3                                      | 0      | 0       | 3         | 9                                          | 3      | 0       | 12        | 15                          | 0.28                                      | 0                                      | 0                                          | 0            | 0                                         | 18        |
| 23-Jun                        | 9                         | 0                                          | 9         | 7                                      | 1      | 0       | 8         | 5                                          | 0      | 0       | 5         | 13                          | 0.24                                      | 0                                      | 0                                          | 0            | 0                                         | 22        |
| Total since start of outbreak | 4,437                     | 329                                        | 4,766     | 738                                    | 386    | 9       | 1,133     | 1,278                                      | 755    | 12      | 2,045     | 3,178                       | -                                         | 54,526                                 |                                            | 54,526       | -                                         | 62,470    |
| Population at risk            |                           |                                            |           |                                        |        |         |           |                                            |        |         |           | 5,381,000                   |                                           |                                        |                                            | 323,000      |                                           | 5,704,000 |
| Prevalence                    |                           |                                            |           |                                        |        |         |           |                                            |        |         |           | 0.06%                       |                                           |                                        |                                            | 16.88%       |                                           | 1.10%     |

**Notes**

<sup>1</sup> Includes PRs and visitors residing in dorms. Breakdown of dorm cases into those detected through surveillance and those isolated before detection is not available before 24 Aug.

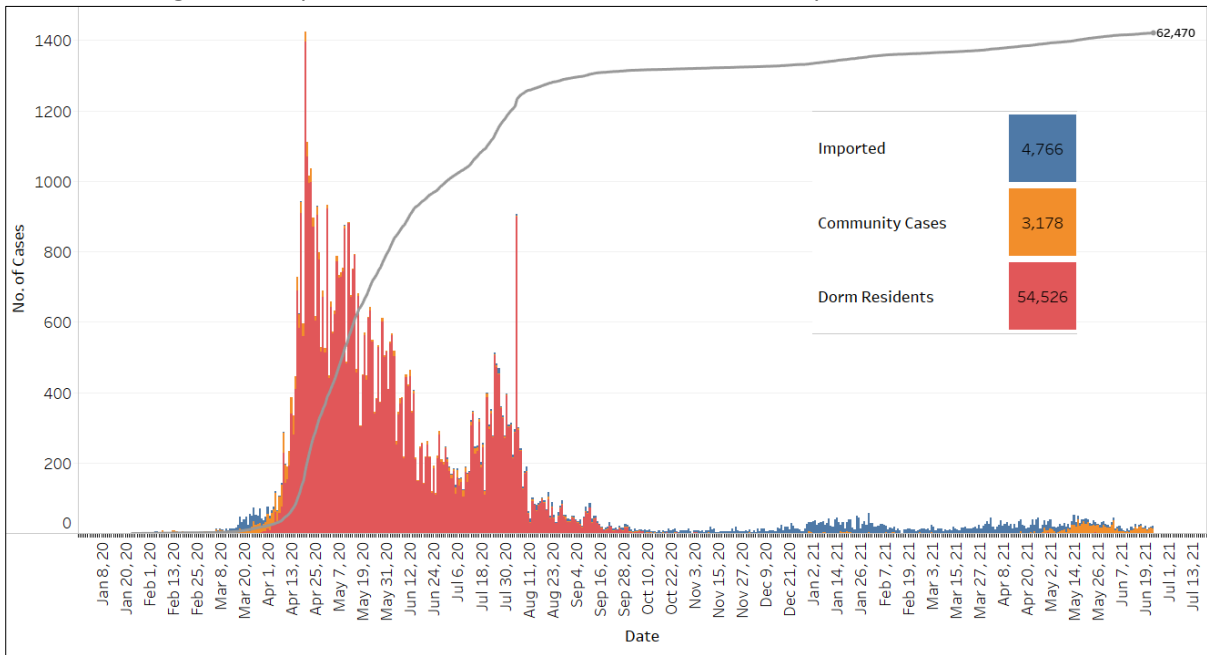
<sup>2</sup> 272 cases were reported before early Apr, and constitute the 1<sup>st</sup> wave of imported cases.

<sup>3</sup> Cases who were already quarantined and tested during quarantine to determine their status.

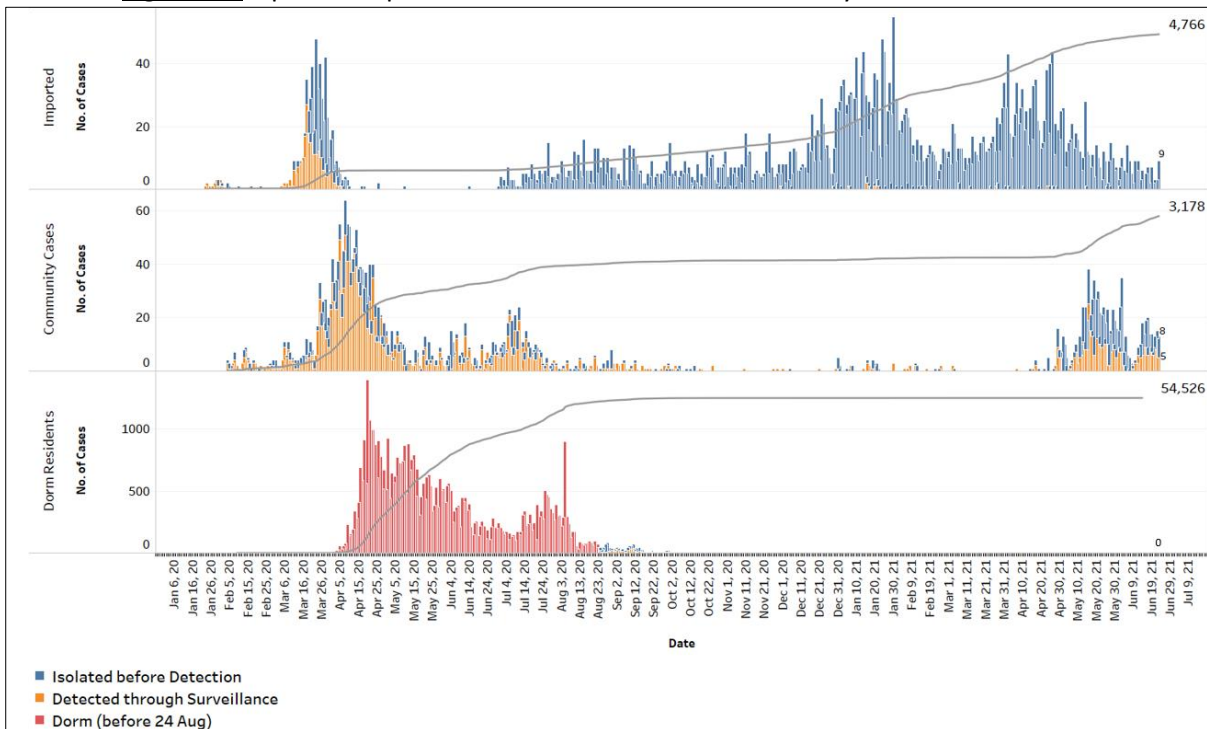
<sup>4</sup> Cases who were identified through surveillance testing, such as the bi-weekly Rostered Routine Testing (RRT) of at-risk workers and testing of those with Acute Respiratory Illness (ARI) symptoms.

<sup>5</sup> Incidence rates are rounded to two significant figures.

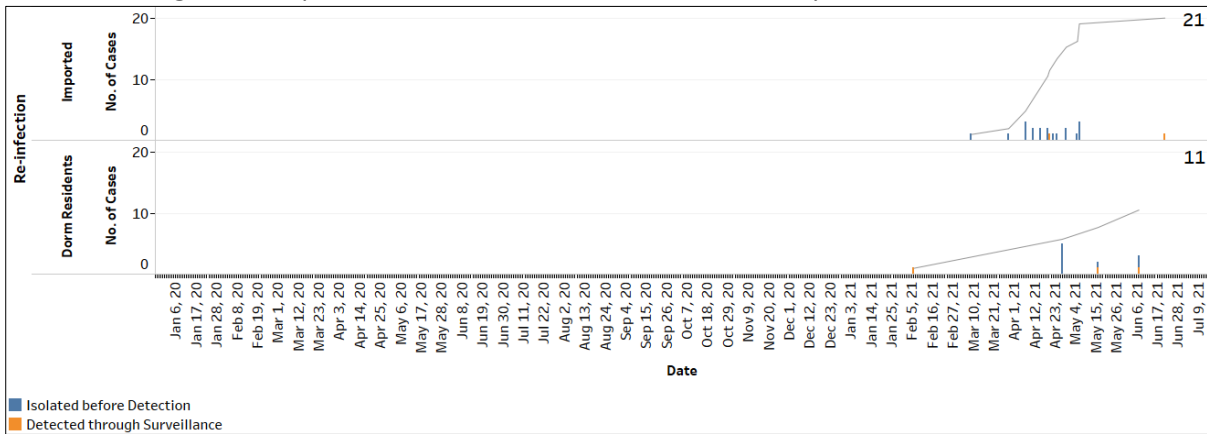
**Figure 1.2:** Epidemic Curve of the COVID-19 Outbreak by Press Release Date



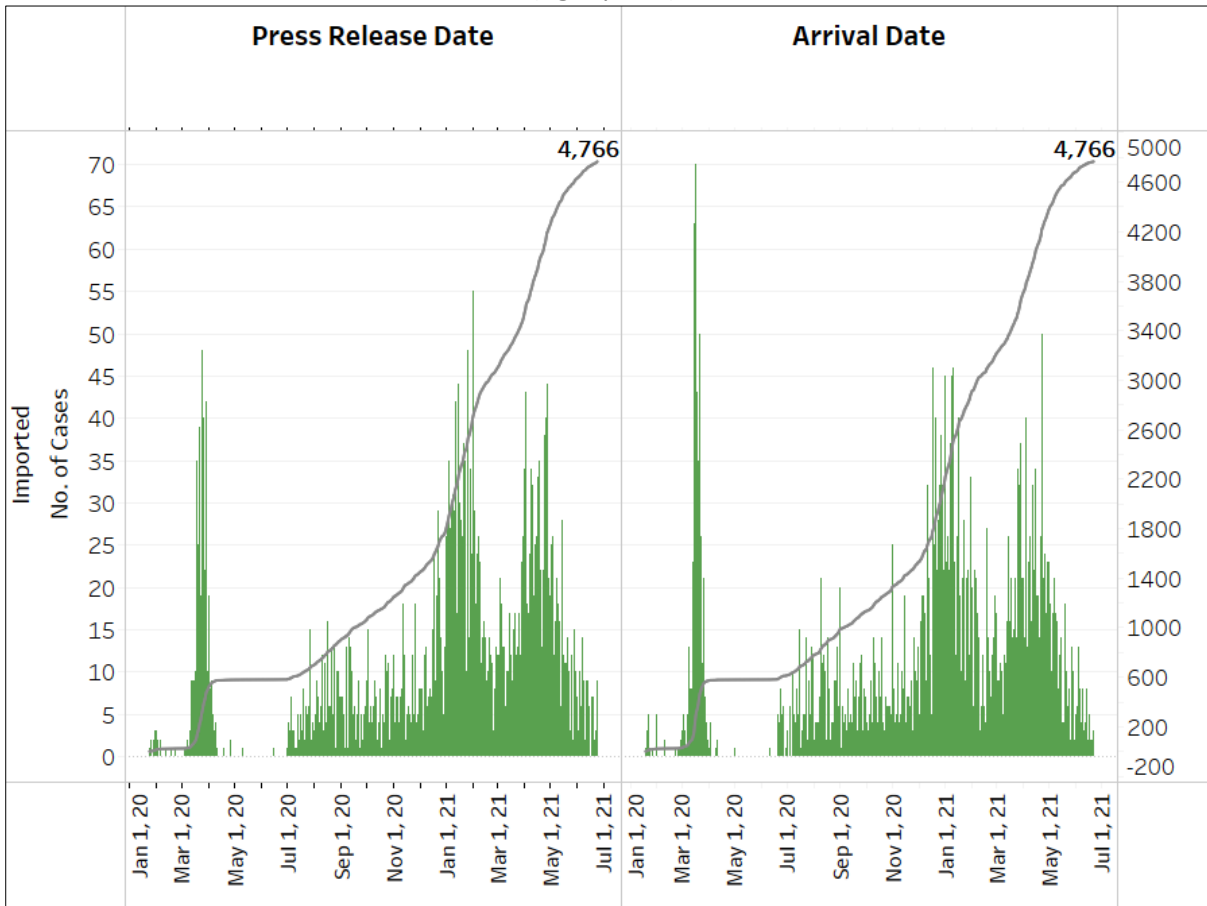
**Figure 1.3:** Epidemic Split Curve of the COVID-19 Outbreak by Press Release Date



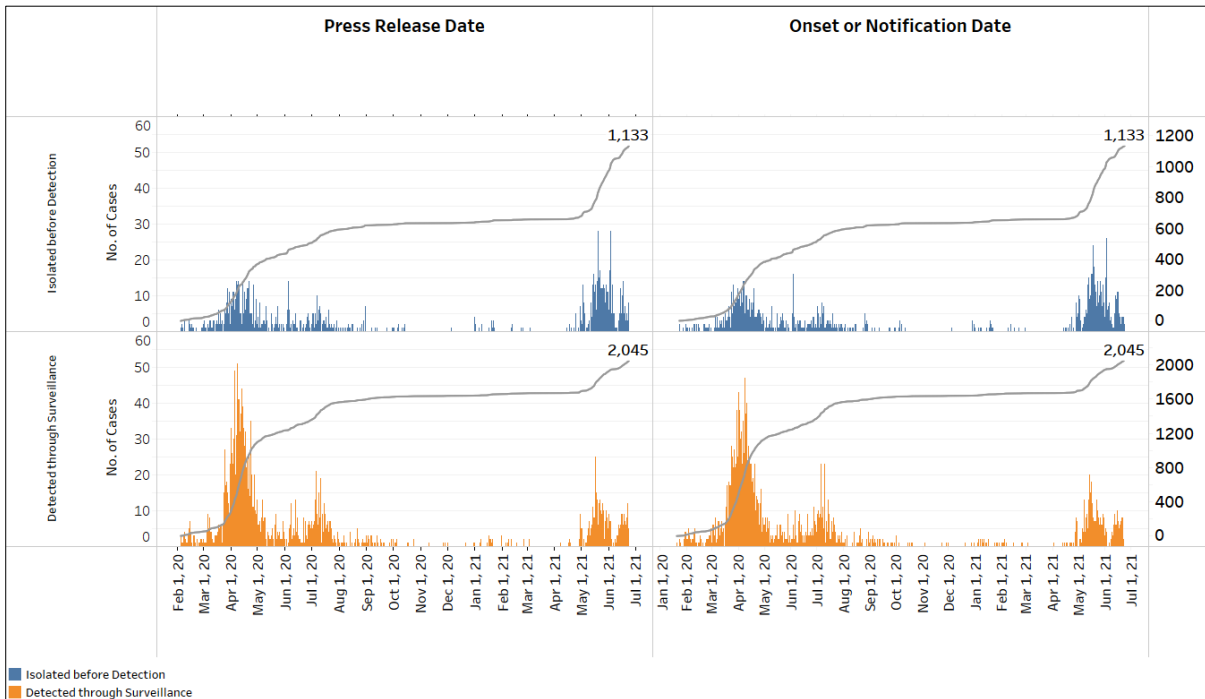
**Figure 1.4:** Epidemic Curve of COVID-19 Re-infections by Press Release Date



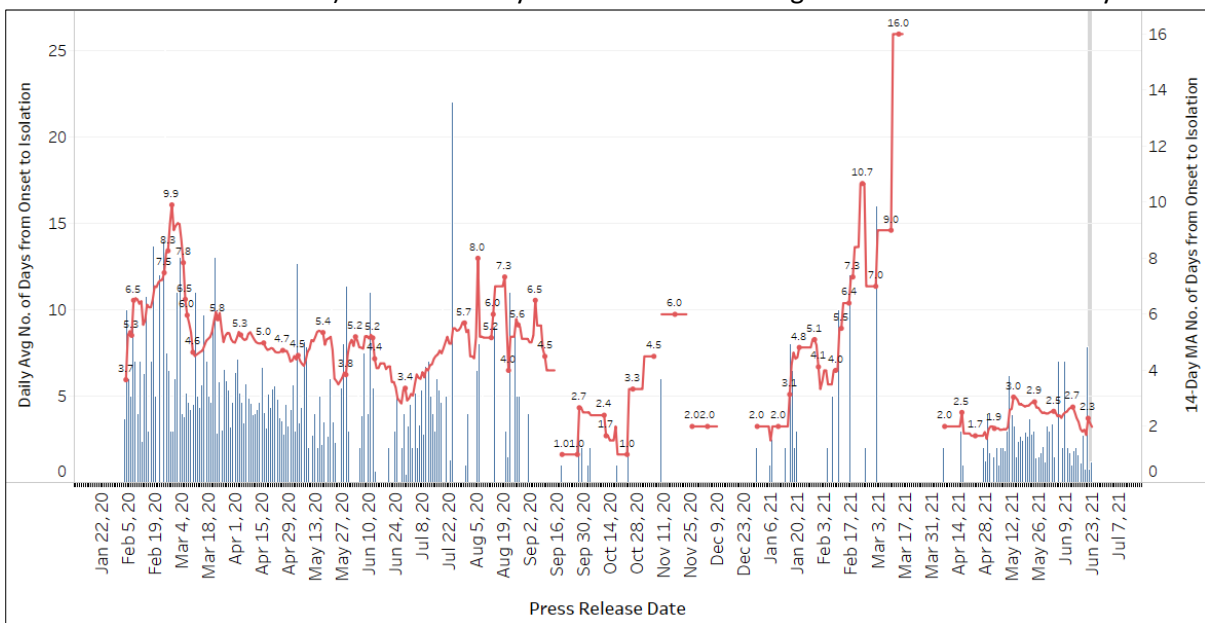
**Figure 1.5:** Epidemic Curve of Imported Cases by Press Release Date (left panel) and Arrival Date (right panel)



**Figure 1.6:** Epidemic Curve of Community Cases by Press Release Date (left panel) and by Symptom Onset or Notification Date<sup>6</sup> (right panel)



**Figure 1.7:** Average Number of Days from Onset of Symptoms to Isolation (QO, hospital admission or notification to MOH) for Community Cases Detected through Surveillance in Each Day



*Line represents the 14-day moving average; Bar represents the daily average<sup>7</sup>*

<sup>6</sup> Date of notification was used for cases that did not display any symptoms. The numbers with onset in the past few days may see an increase as more cases are notified.

<sup>7</sup> Area in grey demarcates data points for the past 3 days where some cases may still be pending epidemiological investigation. The bar graph shows the daily average number of days from symptoms onset to isolation, while the line graph shows the moving average for the past 14 days. Both graphs exclude cases with no onset date (asymptomatic) in the computation of the average. Community cases with symptoms who are isolated on the same day that symptoms occurred would have an isolation time of 0. There is a gap in the line graph from 16 to 18 Sep as there are no symptomatic cases in the preceding 14 days.

**Figure 1.8:** Weekly Reclassifications of Previously Reported Cases (next update will be on 28 Jun)

|                                                                                  | Imported | Community Linked | Community Unlinked | Dorm Residents | Total         |
|----------------------------------------------------------------------------------|----------|------------------|--------------------|----------------|---------------|
| Total number of cases as at 14 Jun                                               | 4,728    | 2,146            | 901                | 54,526         | <b>62,301</b> |
| Cases reported 15 Jun - 21 Jun                                                   | 26       | 79               | 24                 | 0              | <b>129</b>    |
| Net reclassifications of previously reported cases, incorporated 15 Jun - 21 Jun | 0        | 8                | -8                 | 0              | <b>0</b>      |
| Total number of cases as at 21 Jun                                               | 4,754    | 2,233            | 917                | 54,526         | <b>62,430</b> |

| Case Number | PR date     | Occupation              | Link Reclassification                                            | Rationale for Link Reclassification                                                                                                                           |
|-------------|-------------|-------------------------|------------------------------------------------------------------|---------------------------------------------------------------------------------------------------------------------------------------------------------------|
| 63320       | 16 May 2021 | Casino Dealer           | Community Unlinked → Community Linked (Case 63350)               | Case 64217 is wife of 64270 who visits the 115 BMV Market often. 64270 likely passed to her as his symptom onset was earlier, although he was detected later. |
| 63348       | 17 May 2021 | Tax Officer             | Community Unlinked → Community Linked (Case 63178)               | Case is the index of his cluster 63320. He is linked to case 63350, a social contact with an earlier symptom onset.                                           |
| 63446       | 19 May 2021 | Service Engineer        | Community Unlinked → Community Linked (Case 63178)               | Case is phylogenetically linked to case 63511, a workplace contact.                                                                                           |
| 64217       | 14 Jun 2021 | Cleaner                 | Community Unlinked → Community Linked (Cluster 64132)            | Case had dined at the same dining establishment as 63178.                                                                                                     |
| 64326       | 19 Jun 2021 | Homemaker               | Community Unlinked → Community Unlinked (Index of Cluster 64326) | Case is the index case of the cluster.                                                                                                                        |
| 64330       | 19 Jun 2021 | Retiree                 | Community Unlinked → Community Unlinked (Index of Cluster 64330) | Case is the index case of the cluster.                                                                                                                        |
| 64333       | 19 Jun 2021 | Foreign Domestic Worker | Community Unlinked → Community Linked (Cluster 64326)            | Case and the index case of the cluster, 64326, stay at the same residential location.                                                                         |
| 64342       | 20 Jun 2021 | Retiree                 | Community Unlinked → Community Linked (Cluster 64330)            | Case and the index case of the cluster, 64330, stay at the same residential location.                                                                         |
| 64345       | 20 Jun 2021 | Unemployed              | Community Unlinked → Community Linked (Cluster 64330)            | Case and the index case of the cluster, 64330, stay at the same residential location.                                                                         |

Data updated as at 23 June 2021, 1200 hrs

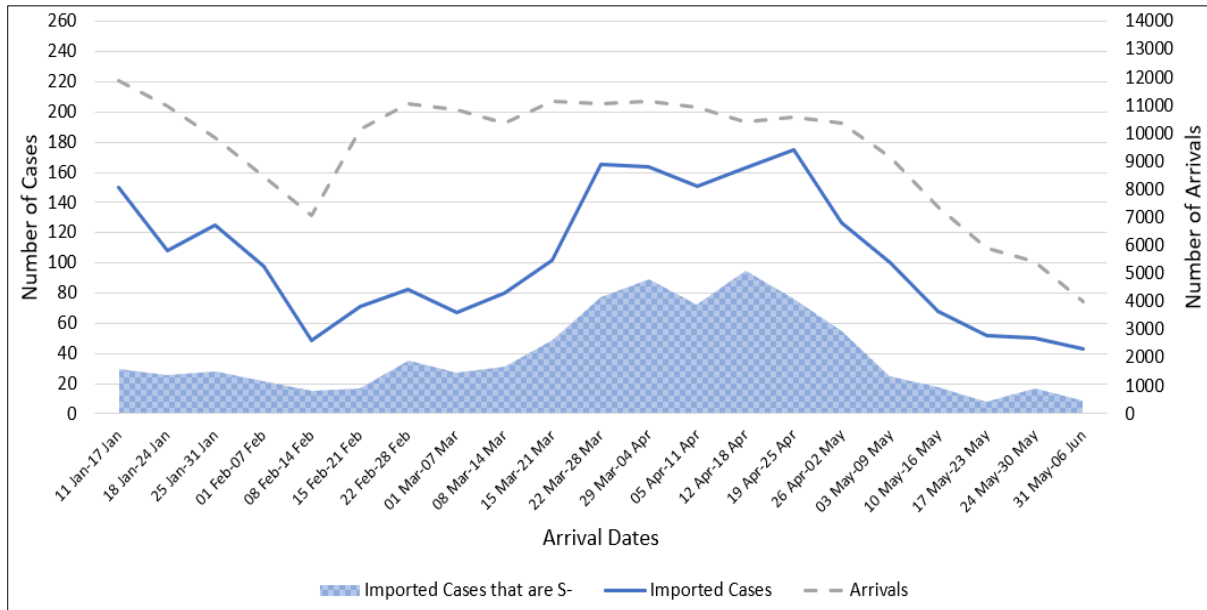
| Case Number | PR date     | Occupation | Link Reclassification                                       | Rationale for Link Reclassification                                                   |
|-------------|-------------|------------|-------------------------------------------------------------|---------------------------------------------------------------------------------------|
| 64353       | 20 Jun 2021 | Engineer   | Community Unlinked<br>→ Community Linked<br>(Cluster 64326) | Case and the index case of the cluster, 64326, stay at the same residential location. |

(2) Imported COVID 19 Cases

**Figure 2.1:** Serology and Symptom Status of Imported Cases Reported from 10 Jun to 16 Jun

| Symptoms     | S+ | S- | Not Serology Tested | Pending Serology Result | Total No. of Cases |
|--------------|----|----|---------------------|-------------------------|--------------------|
| Asymptomatic | 27 | 6  | 0                   | 1                       | 34                 |
| Symptomatic  | 0  | 4  | 0                   | 0                       | 4                  |
| <b>Total</b> | 27 | 10 | 0                   | 1                       | 38                 |

**Figure 2.2:** Weekly Total Number of Imported Cases, Imported Cases that are S- and Arrivals from 11 Jan 21 to 6 Jun 21 (next update will be on 28 Jun)<sup>8</sup>



<sup>8</sup> Data from the past 2 weeks are excluded as cases on SHN who arrived in the past 2 weeks may not have their test results yet. "Imported Cases that are S-" comprises imported cases who are (a) serology negative; or (b) not tested for serology.

**(3) Number of COVID 19 Cases in Hospitals and Community Care Facilities**

**Figure 3.1:** Summary of Confirmed Cases by Status in the Past 14 Days

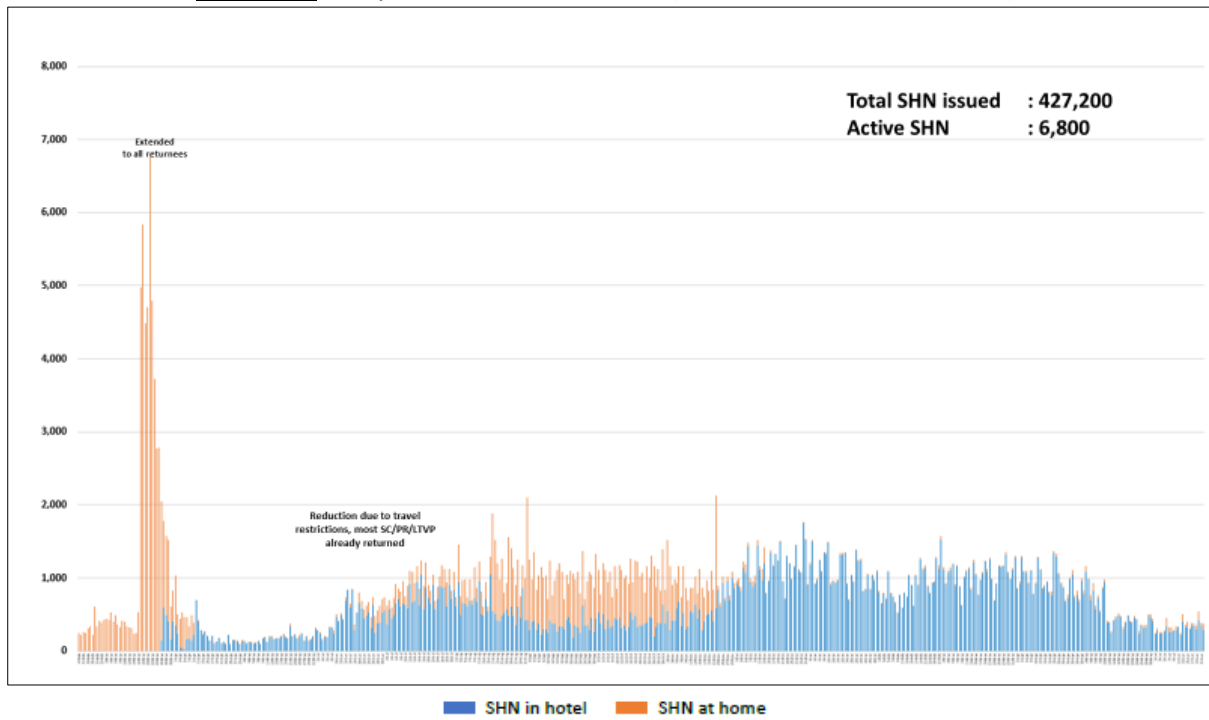
| Press Release Date | Currently Admitted in Hospitals |               | In Care Facilities <sup>9</sup> | Total Recovered     |                          | Total Demised | Total         |
|--------------------|---------------------------------|---------------|---------------------------------|---------------------|--------------------------|---------------|---------------|
|                    | ICU                             | General Wards |                                 | Completed Isolation | Discharged from Hospital |               |               |
| 10-Jun             | 1                               | 149           | 287                             | 58,251              | 3,514                    | 34            | <b>62,236</b> |
| 11-Jun             | 1                               | 132           | 279                             | 58,272              | 3,527                    | 34            | <b>62,245</b> |
| 12-Jun             | 1                               | 124           | 266                             | 58,301              | 3,537                    | 34            | <b>62,263</b> |
| 13-Jun             | 1                               | 129           | 243                             | 58,323              | 3,546                    | 34            | <b>62,276</b> |
| 14-Jun             | 2                               | 136           | 235                             | 58,341              | 3,553                    | 34            | <b>62,301</b> |
| 15-Jun             | 2                               | 135           | 233                             | 58,351              | 3,560                    | 34            | <b>62,315</b> |
| 16-Jun             | 1                               | 145           | 228                             | 58,366              | 3,565                    | 34            | <b>62,339</b> |
| 17-Jun             | 1                               | 150           | 221                             | 58,388              | 3,572                    | 34            | <b>62,366</b> |
| 18-Jun             | 1                               | 151           | 209                             | 58,409              | 3,578                    | 34            | <b>62,382</b> |
| 19-Jun             | 1                               | 152           | 193                             | 58,438              | 3,585                    | 34            | <b>62,403</b> |
| 20-Jun             | 1                               | 141           | 196                             | 58,450              | 3,592                    | 34            | <b>62,414</b> |
| 21-Jun             | 0                               | 134           | 191                             | 58,459              | 3,611                    | 35            | <b>62,430</b> |
| 22-Jun             | 2                               | 140           | 173                             | 58,486              | 3,612                    | 35            | <b>62,448</b> |
| 23-Jun             | 5                               | 136           | 181                             | 58,496              | 3,617                    | 35            | <b>62,470</b> |

<sup>9</sup> Community Care Facilities (i.e. D'Resort, EXPO, Tuas South), Private Hospitals (i.e. Concord International Hospital, Mt Elizabeth Hospital, Gleneagles Hospital, Mt Elizabeth Novena Hospital, Parkway East Hospital), Community Hospitals (i.e. Bright Vision Hospital) and other care facilities.

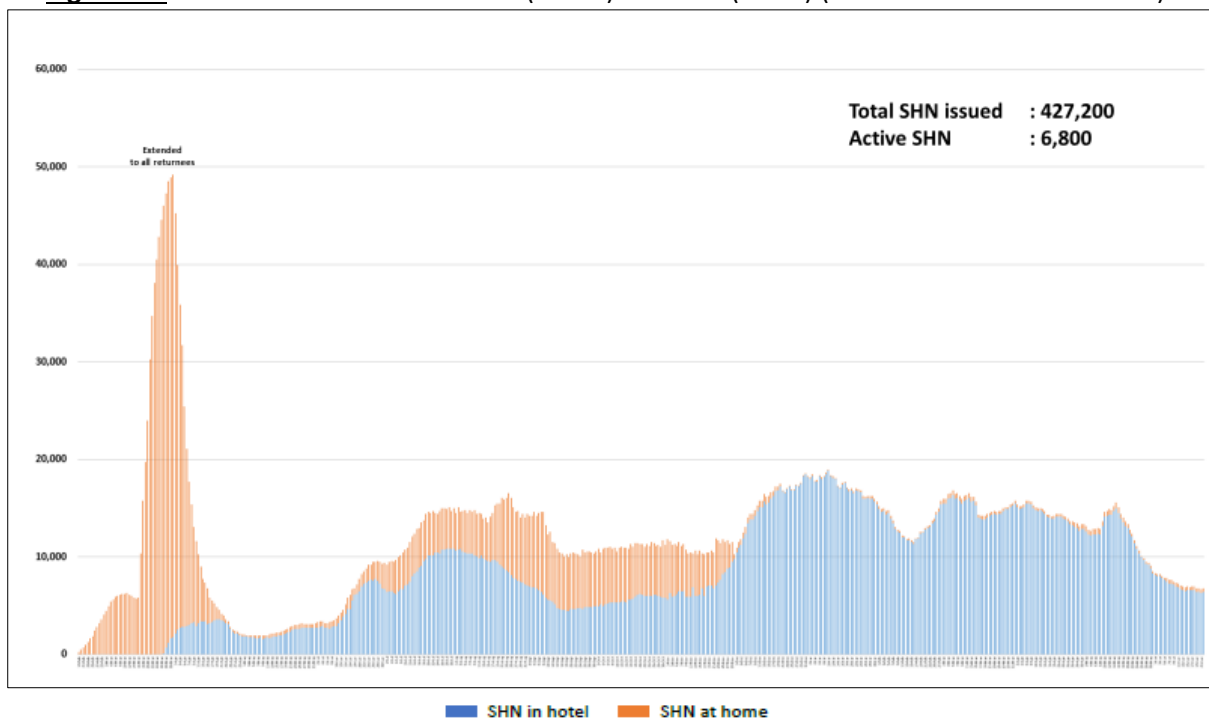


#### (4) Number of Stay Home Notice (SHN) Issued

**Figure 4.1:** Daily Number of SHN issued (19 Feb 2020 to 22 Jun 2021)

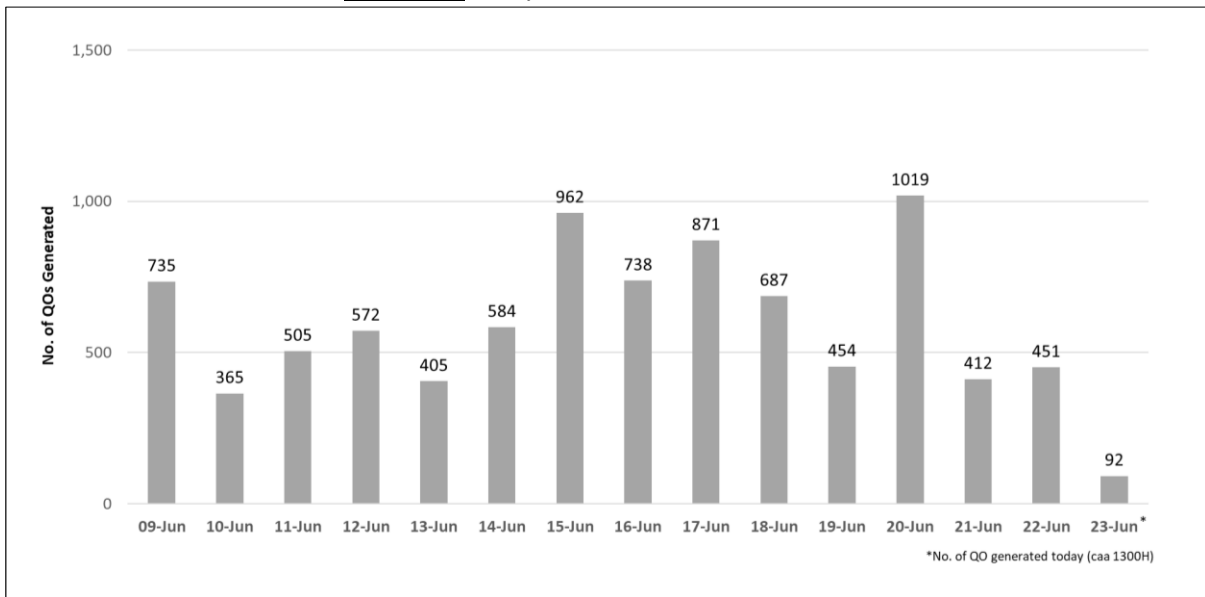


**Figure 4.2:** Active Stock Number of SHN (Home) and SHN (Hotel) (19 Feb 2020 to 22 Jun 2021)



(5) Number of Quarantine Orders (QO) Generated

**Figure 5.1:** Daily Number of QOs Generated



**Figure 5.2:** Active Number of Persons Under Quarantine (PUQs)

