

26 September 2020 Daily Report on COVID-19**(1) Number of COVID-19 Cases****Figure 1.1:** Breakdown of New Confirmed Cases in the Past 14 Days

Press Release Date	Imported			Non-Imported Cases														All Cases
	Isolated	Not Isolated ³	Sub-Total	Community Cases								Dorm Residents ^{1,2}						
				Isolated before Detection ⁴				Detected through Surveillance ⁵				Sub-Total	Incidence Rate ⁶ (per 100,000)	Isolated before Detection ⁶	Detected through Surveillance ⁷	No. of Cases	Incidence Rate ⁸ (per 100,000)	
				SC/PR	G or F	Visitor	Sub-Total	SC/PR	G or F	Visitor	Sub-Total							
Before 13-Sep	710	272	982	363	258	1	622	986	620	9	1,615	2,237	-	54,137		54,137	-	57,356
13-Sep	8	0	8	0	0	0	0	0	1	0	1	1	0.019	31	9	40	12	49
14-Sep	5	0	5	0	0	0	0	0	0	0	0	0	0	29	14	43	13	48
15-Sep	6	0	6	0	0	0	0	0	0	0	0	0	0	13	15	28	8.7	34
16-Sep	2	0	2	0	0	0	0	0	2	0	2	2	0.037	17	6	23	7.1	27
17-Sep	2	0	2	0	0	0	0	0	1	0	1	1	0.019	10	5	15	4.6	18
18-Sep	1	0	1	0	0	0	0	0	0	0	0	0	0	5	4	9	2.8	10
19-Sep	5	0	5	0	0	0	0	1	0	0	1	1	0.019	6	3	9	2.8	15
20-Sep	4	0	4	0	0	0	0	0	1	0	1	1	0.019	5	8	13	4.0	18
21-Sep	9	0	9	0	0	0	0	0	0	0	0	0	0	16	6	22	6.8	31
22-Sep	1	0	1	0	0	0	0	0	0	0	0	0	0	6	14	20	6.2	21
23-Sep	4	0	4	0	1	0	1	0	0	0	0	1	0.019	4	3	7	2.2	12
24-Sep	5	0	5	0	0	0	0	0	0	0	0	0	0	5	5	10	3.1	15
25-Sep	2	0	2	0	0	0	0	0	0	0	0	0	0	7	2	9	2.8	11
26-Sep	5	0	5	0	0	0	0	0	1	0	1	1	0.019	7	7	14	4.3	20
Total since start of outbreak	769	272	1,041	363	259	1	623	987	626	9	1,622	2,245	-	54,399		54,399	-	57,685
Population at risk												5,381,000				323,000		5,704,000
Prevalence												0.04%				16.84%		1.01%

¹ Includes PRs and visitors residing in dorms.² Breakdown of dorm cases into those detected through surveillance and those isolated before detection is not available before 24 Aug.³ All of these cases were reported before early Apr, and constitute the first wave of imported cases.⁴ Cases who were already quarantined and tested during quarantine to determine their status.⁵ Cases who were identified through surveillance testing, such as the bi-weekly Rostered Routine Testing (RRT) of at-risk workers and testing of those with Acute Respiratory Illness (ARI) symptoms.⁶ Incidence rates are rounded to two significant figures.

Figure 1.2: Epidemic Curve of the COVID-19 Outbreak by Press Release Date

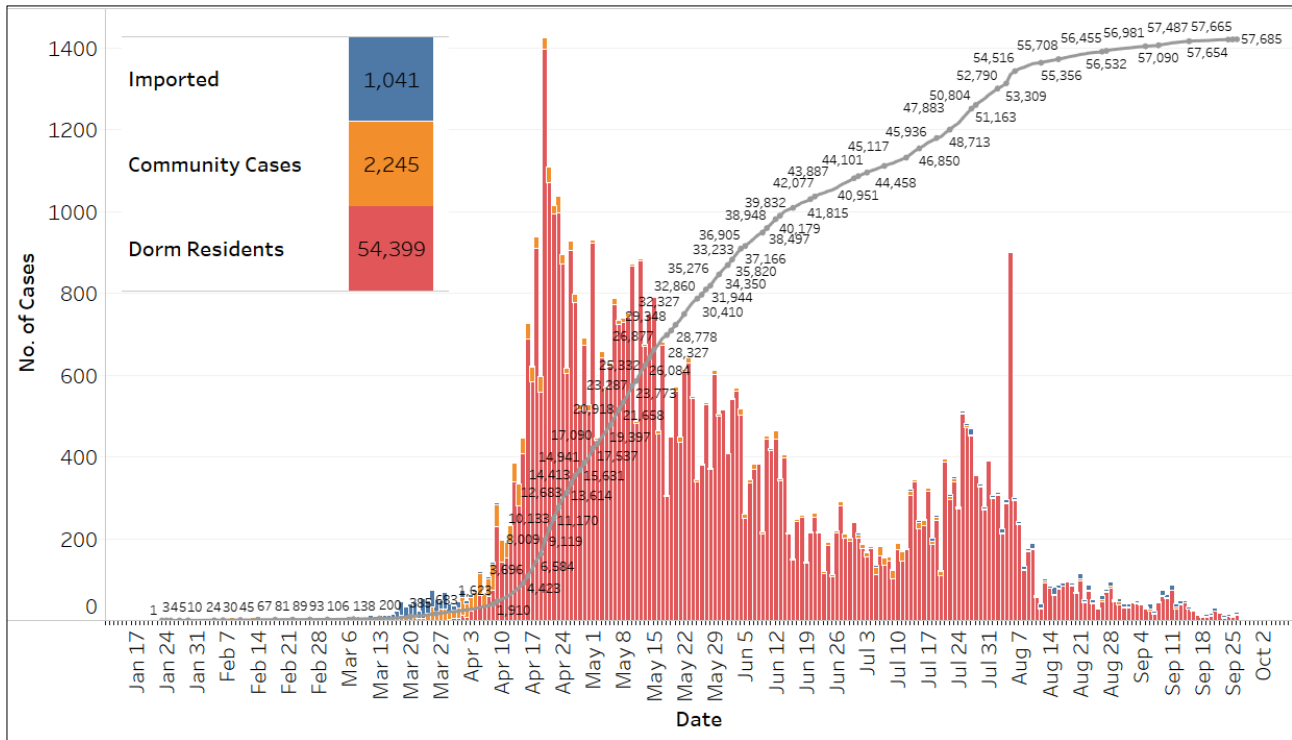


Figure 1.3: Epidemic Split Curve of the COVID-19 Outbreak by Press Release Date

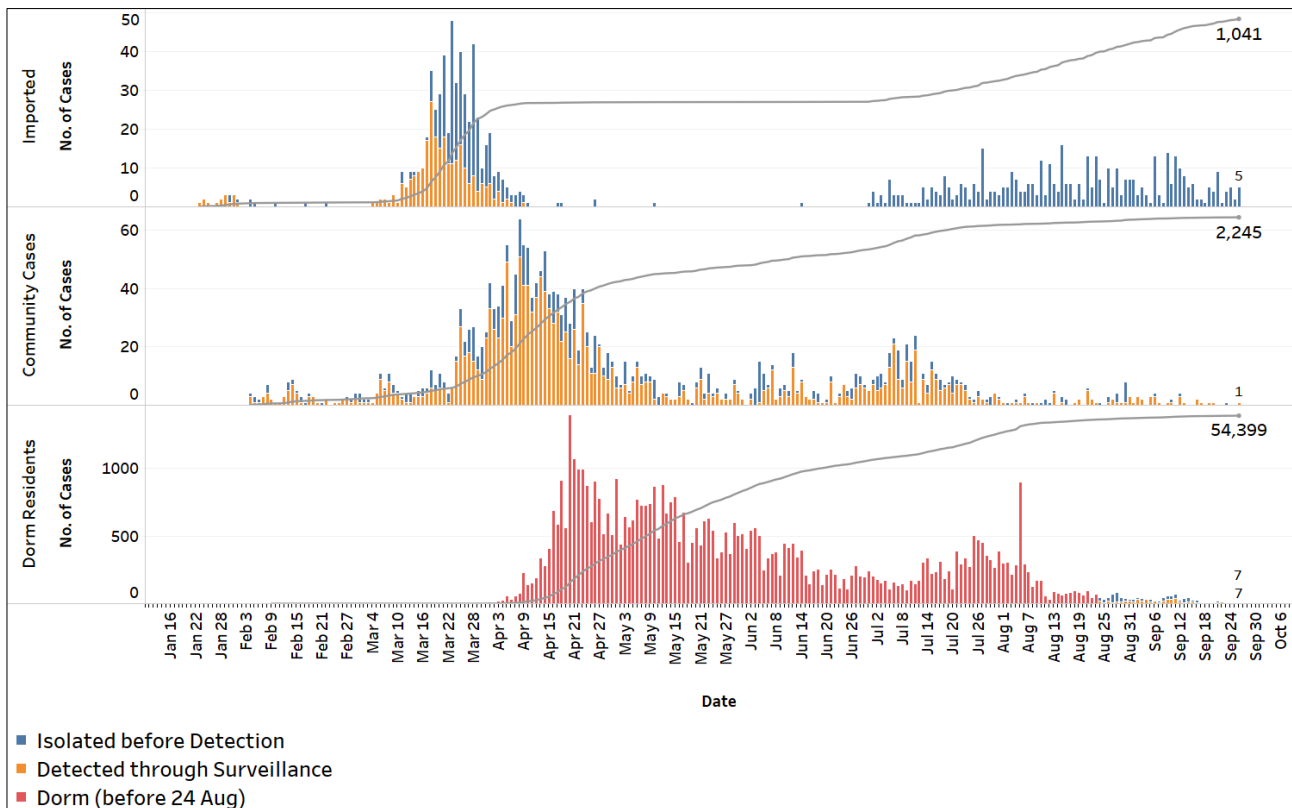


Figure 1.4: Epidemic Curve of Imported Cases by Press Release Date (left panel) and Arrival Date (right panel)

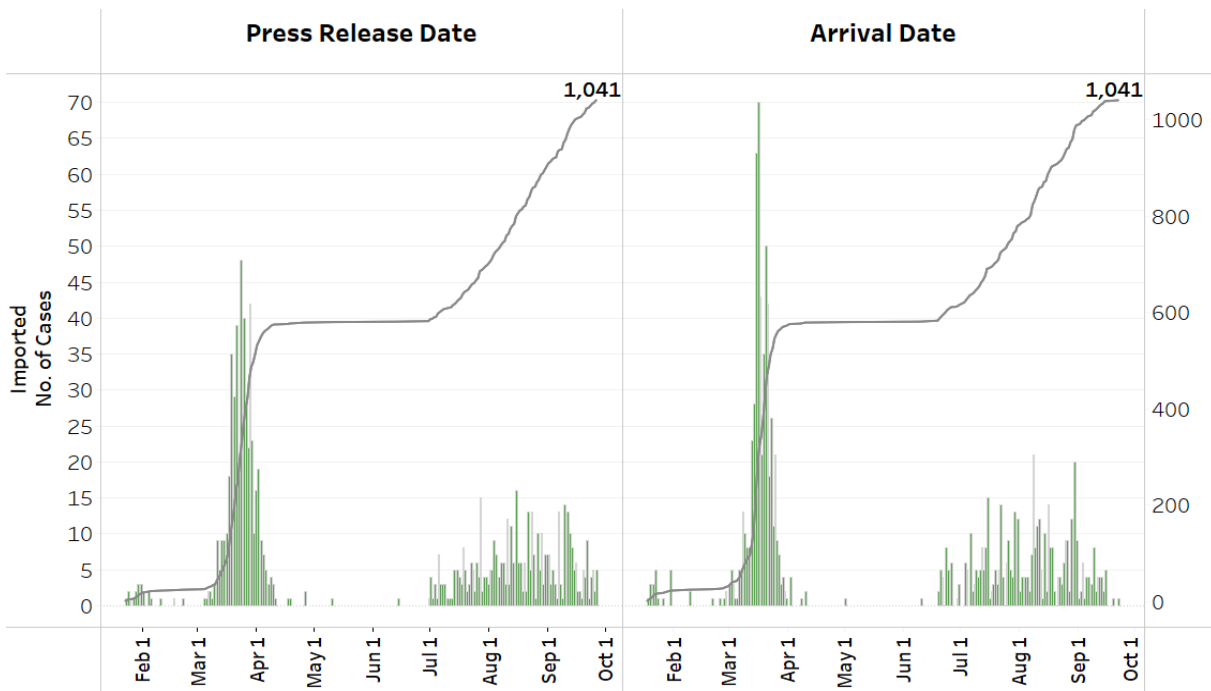
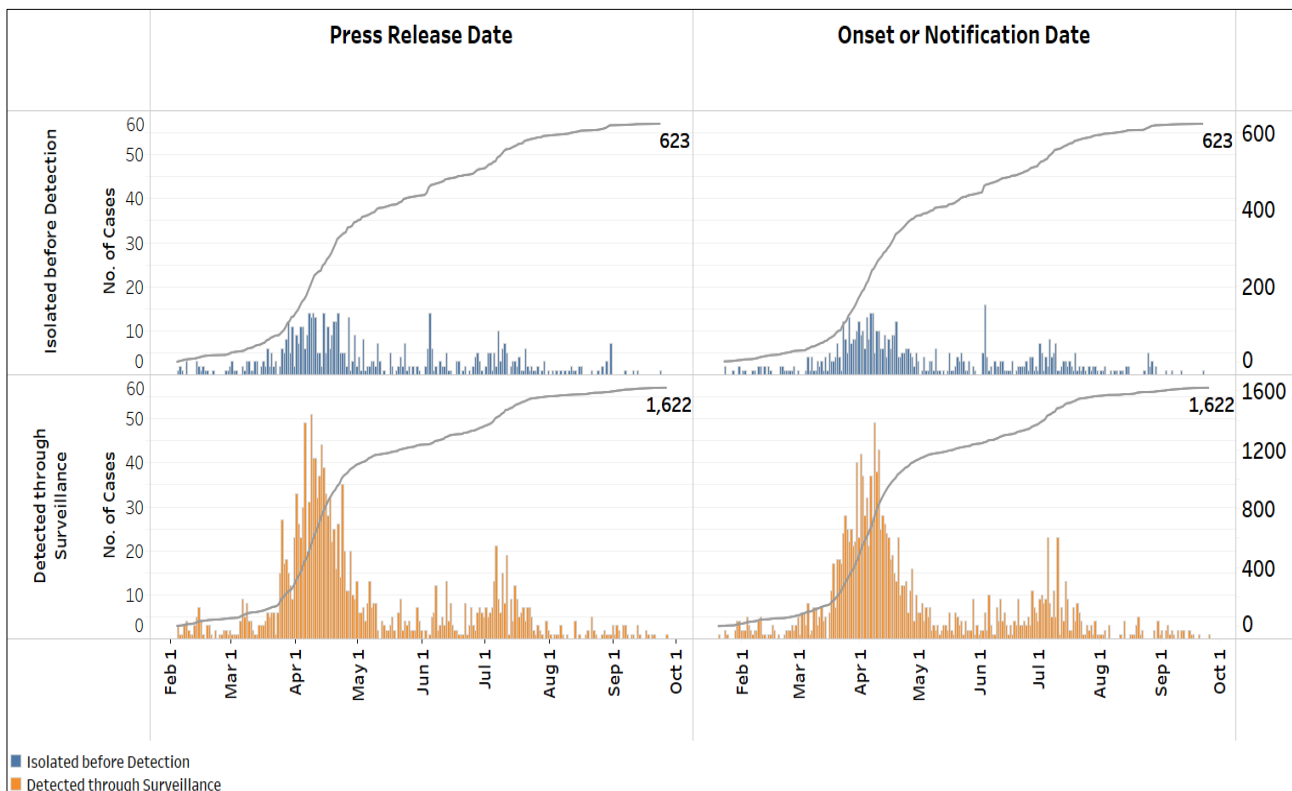
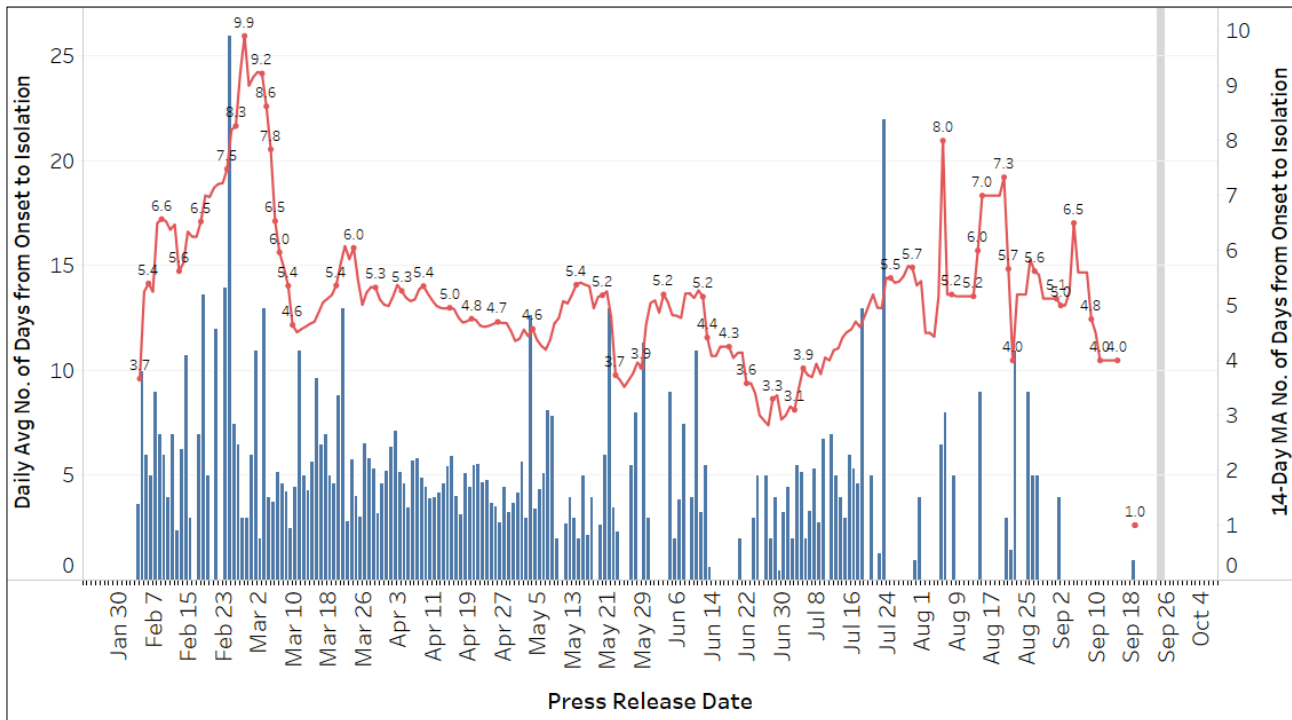


Figure 1.5: Epidemic Curve of Community Cases by Press Release Date (left panel) and by Symptom Onset or Notification Date⁷ (right panel)



⁷ Date of notification was used for cases that did not display any symptoms. The numbers with onset in the past few days may see an increase as more cases are notified.

Figure 1.6: Average Number of Days from Onset of Symptoms to Isolation (QO, hospital admission or notification to MOH) for Community Cases Detected through Surveillance in Each Day



Line represents the 14-day moving average; Bar represents the daily average⁸

⁸ Area in grey demarcates data points for the past 3 days where some cases may still be pending epidemiological investigation. The bar graph shows the daily average number of days from symptoms onset to isolation, while the line graph shows the moving average for the past 14 days. Both graphs exclude cases with no onset date (asymptomatic) in the computation of the average. Community cases with symptoms who are isolated on the same day that symptoms occurred would have an isolation time of 0. There is a gap in the line graph from 16 to 18 Sep as there are no symptomatic cases in the preceding 14 days. There are no community cases detected through surveillance who are symptomatic after 19 Sep.

(2) Number of COVID-19 Cases in Hospitals and Community Care Facilities

Figure 2.1: Summary of Confirmed Cases by Status in the Past 14 Days

Press Release Date	Currently Admitted in Hospitals		In Care Facilities ⁹	Total Recovered		Total Demised	Total
	ICU	General Wards		Completed Isolation	Discharged from Hospital		
13-Sep	0	60	555	54,387	2,377	27	57,406
14-Sep	0	53	572	54,415	2,387	27	57,454
15-Sep	0	51	526	54,495	2,389	27	57,488
16-Sep	0	42	490	54,556	2,399	27	57,514
17-Sep	0	43	423	54,634	2,405	27	57,532
18-Sep	0	38	407	54,658	2,413	27	57,543
19-Sep	0	27	362	54,720	2,422	27	57,558
20-Sep	0	30	338	54,756	2,425	27	57,576
21-Sep	0	36	302	54,817	2,424*	27	57,606
22-Sep	0	37	301	54,833	2,429	27	57,627
23-Sep	0	36	285	54,856	2,435	27	57,639
24-Sep	0	28	266	54,887	2,446	27	57,654
25-Sep	0	30 ⁺	268	54,893	2,447 ⁺	27	57,665
26-Sep	0	25	274	54,910	2,449	27	57,685

*Case 57679 was expunged as it was reclassified as a non-Covid infection by the ID expert panel.

+ Case 57694 was reclassified from Discharged from Hospital to Admitted in GW

⁹ Community Care Facilities (i.e. D'Resort, EXPO, Big Box), Private Hospitals (i.e. Concord International Hospital, Mt Elizabeth Hospital, Gleneagles Hospital, Mt Elizabeth Novena Hospital, Parkway East Hospital), Community Hospitals (i.e. Bright Vision Hospital) and other care facilities.

(3) Number of Stay-Home-Notice (SHN) Issued

Figure 3.1: Daily Number of SHN issued

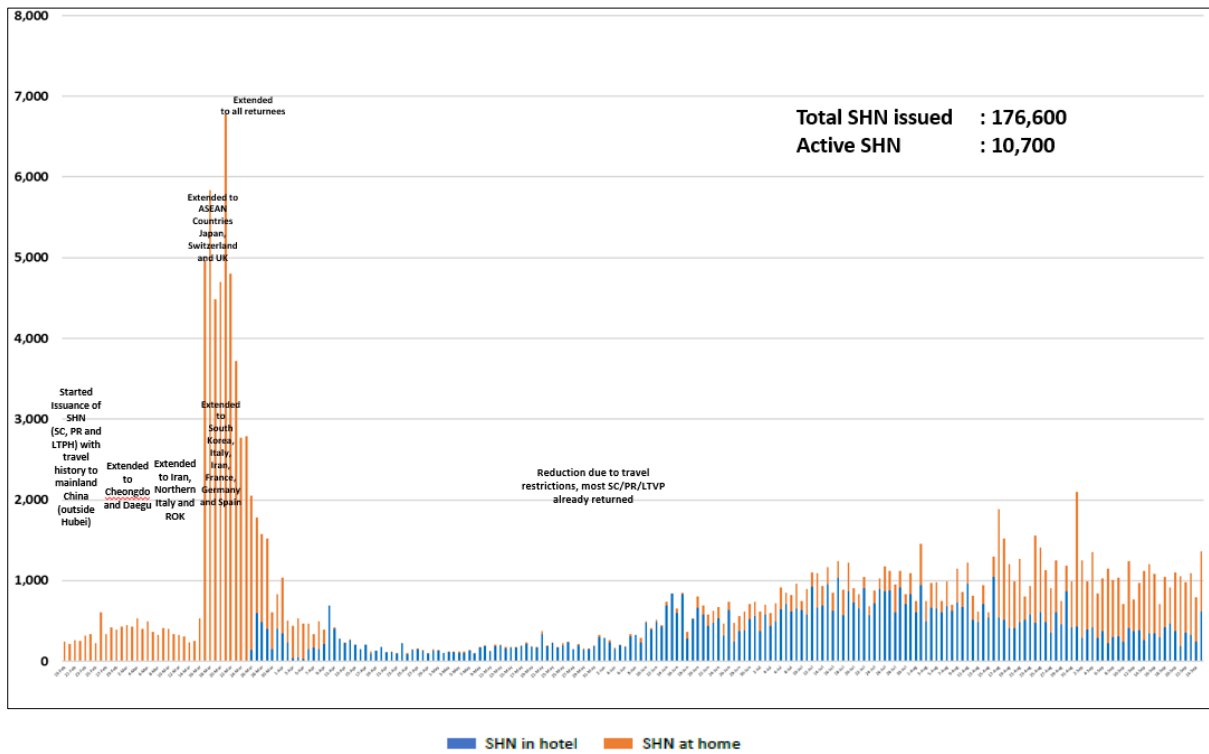
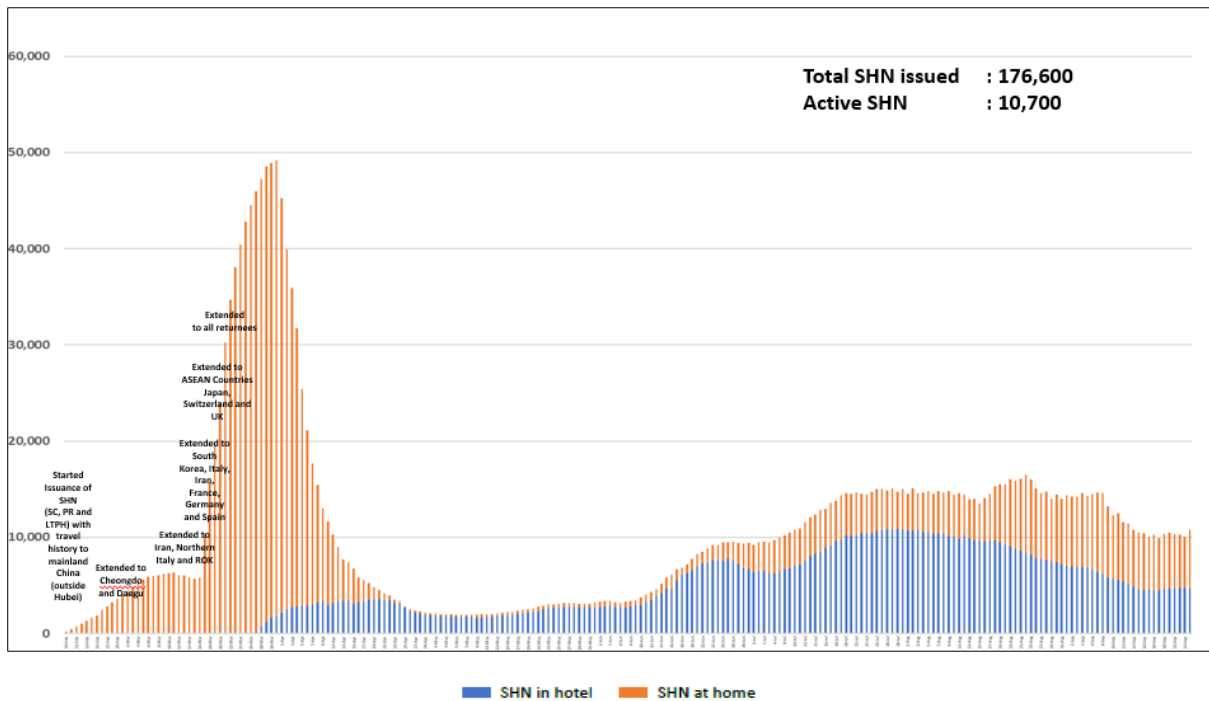


Figure 3.2: Active Stock Number of SHN (Home) and SHN (Hotel)



(4) Number of Quarantine Order (QO) Issued

Figure 4.1: Daily Number of QOs Issued

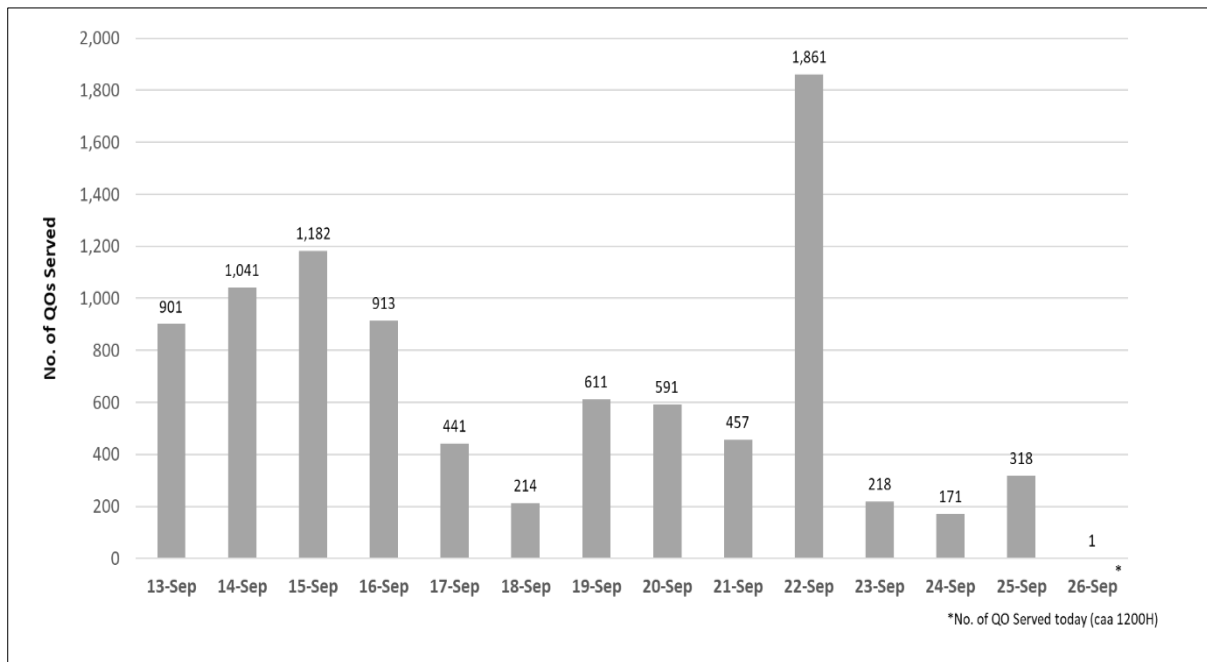


Figure 4.2: Active Number of Persons Under Quarantine (PUQs)

