

28 April 2021 Daily Report on COVID-19

(1) Number of COVID-19 Cases

Figure 1.1: Breakdown of New Confirmed Cases in the Past 14 Days

Press Release Date	Imported			Non-Imported Cases														All Cases	
				Community Cases								Dorm Residents ¹							
	Isolated before Detection	Detected through Surveillance ²	Sub-Total	Isolated before Detection ³				Detected through Surveillance ⁴				Sub-Total	Incidence Rate ⁵ (per 100,000)	Isolated before Detection ³	Detected through Surveillance ⁴	No. of Cases	Incidence Rate ⁵ (per 100,000)		
				SC/PR	G or F	Visitor	Sub-Total	SC/PR	G or F	Visitor	Sub-Total								
Before 15-Apr	3,557	319	3,876	385	271	3	659	1,016	646	10	1,672	2,331	-	54,512		54,512	-	60,719	
15-Apr	16	0	16	0	0	0	0	0	0	0	0	0	0	0	0	0	0	0	16
16-Apr	32	0	32	0	0	0	0	0	1	1	2	2	0.037	0	0	0	0	0	34
17-Apr	35	0	35	0	2	0	2	2	0	0	2	4	0.074	0	0	0	0	0	39
18-Apr	21	1	22	0	0	0	0	0	1	0	1	1	0.019	0	0	0	0	0	23
19-Apr	19	0	19	1	0	0	1	0	0	0	0	1	0.019	0	0	0	0	0	20
20-Apr	13	0	13	0	0	0	0	0	0	0	0	0	0	0	1	1	0.31	14	
21-Apr	14	0	14	0	0	0	0	1	0	0	1	1	0.019	0	0	0	0	15	
22-Apr	22	0	22	0	1	0	1	0	0	0	0	1	0.019	1	0	1	0.31	24	
23-Apr	36	0	36	0	0	0	0	0	1	1	2	2	0.037	0	1	1	0.31	39	
24-Apr	17	1	18	1	4	0	5	0	0	0	0	5	0.093	0	0	0	0	23	
25-Apr	40	0	40	0	0	0	0	0	0	0	0	0	0	0	0	0	0	40	
26-Apr	43	0	43	0	0	0	0	1	0	0	1	1	0.019	1	0	1	0.31	45	
27-Apr	11	0	11	0	1	0	1	0	0	0	0	1	0.019	0	0	0	0	12	
28-Apr	20	0	20	0	0	0	0	2	1	0	3	3	0.056	0	0	0	0	23	
Total since start of outbreak	3,896	321	4,217	387	279	3	669	1,022	650	12	1,684	2,353	-	54,516		54,516	-	61,086	
Population at risk												5,381,000				323,000		5,704,000	
Prevalence												0.04%				16.88%		1.07%	

Notes

¹ Includes PRs and visitors residing in dorms. Breakdown of dorm cases into those detected through surveillance and those isolated before detection is not available before 24 Aug.

² 272 cases were reported before early Apr, and constitute the 1st wave of imported cases.

³ Cases who were already quarantined and tested during quarantine to determine their status.

⁴ Cases who were identified through surveillance testing, such as the bi-weekly Rostered Routine Testing (RRT) of at-risk workers and testing of those with Acute Respiratory Illness (ARI) symptoms.

⁵ Incidence rates are rounded to two significant figures.

Figure 1.2: Epidemic Curve of the COVID-19 Outbreak by Press Release Date

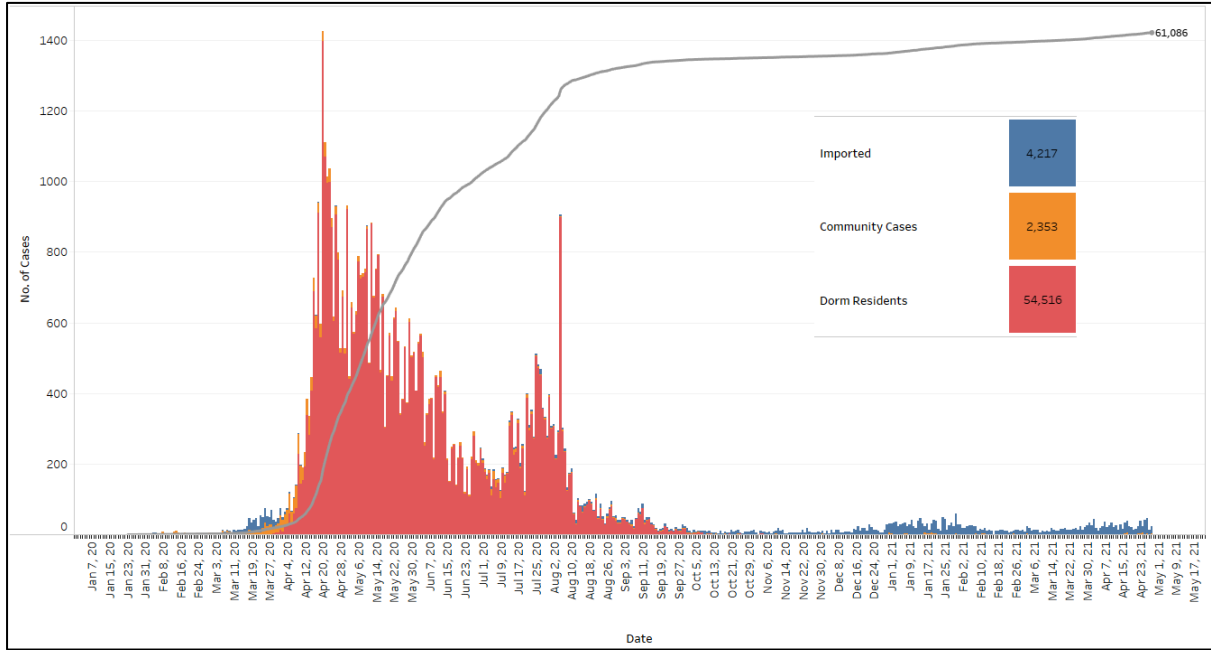


Figure 1.3: Epidemic Split Curve of the COVID-19 Outbreak by Press Release Date

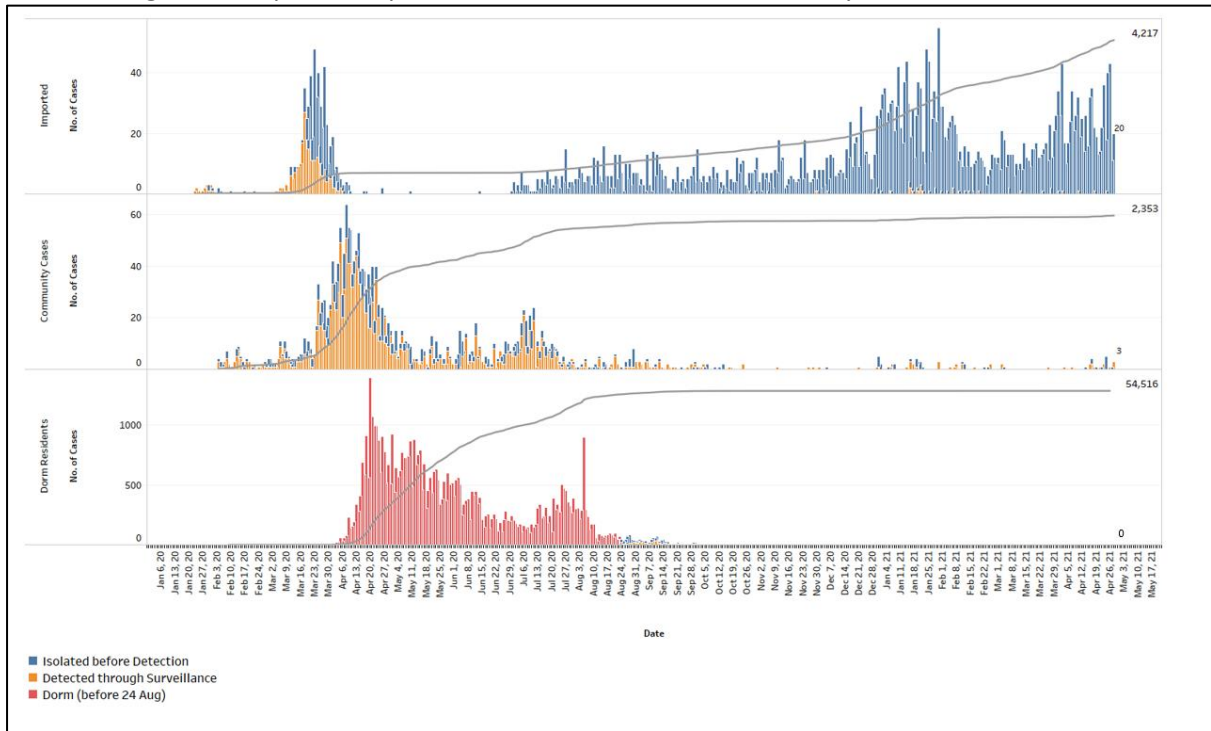


Figure 1.4: Epidemic Curve of COVID-19 Re-infections by Press Release Date

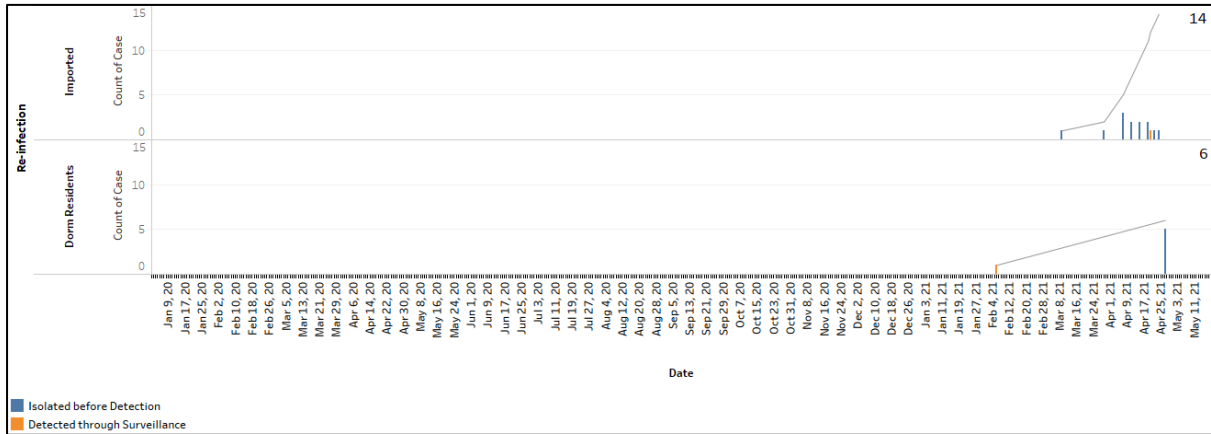


Figure 1.5: Epidemic Curve of Imported Cases by Press Release Date (left panel) and Arrival Date (right panel)

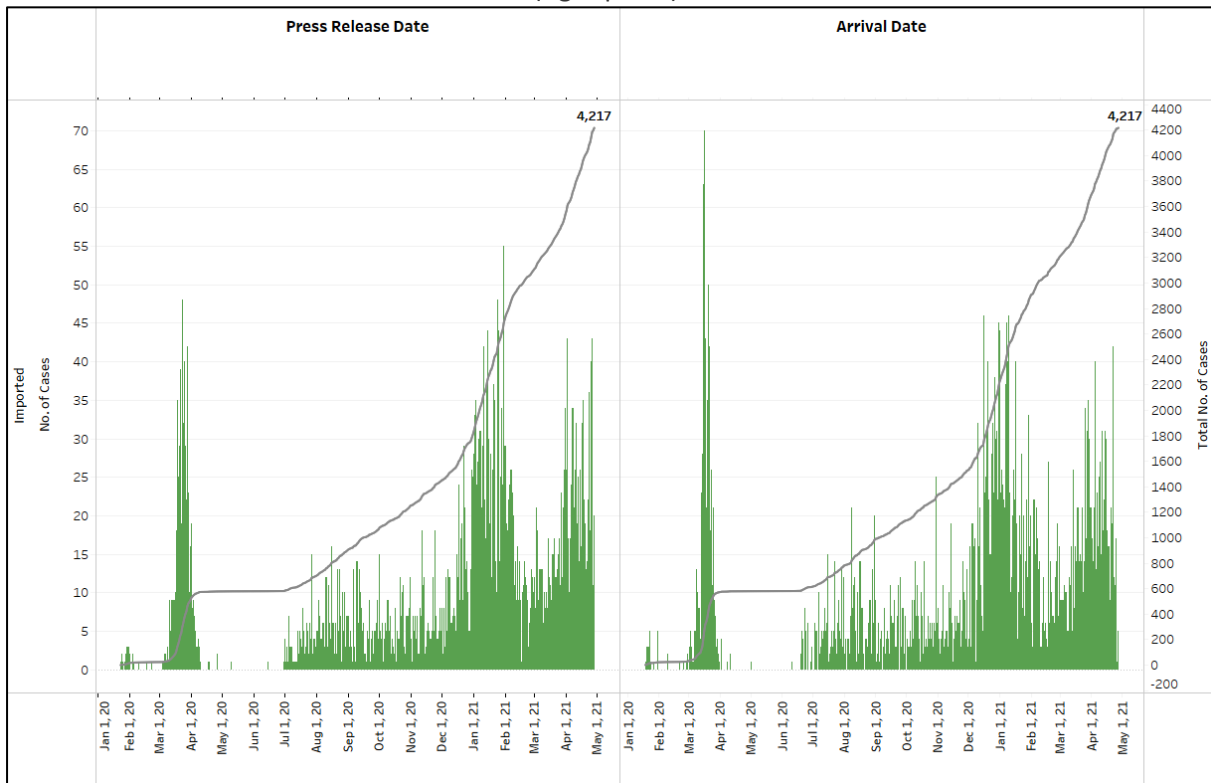


Figure 1.6: Epidemic Curve of Community Cases by Press Release Date (left panel) and by Symptom Onset or Notification Date⁶ (right panel)

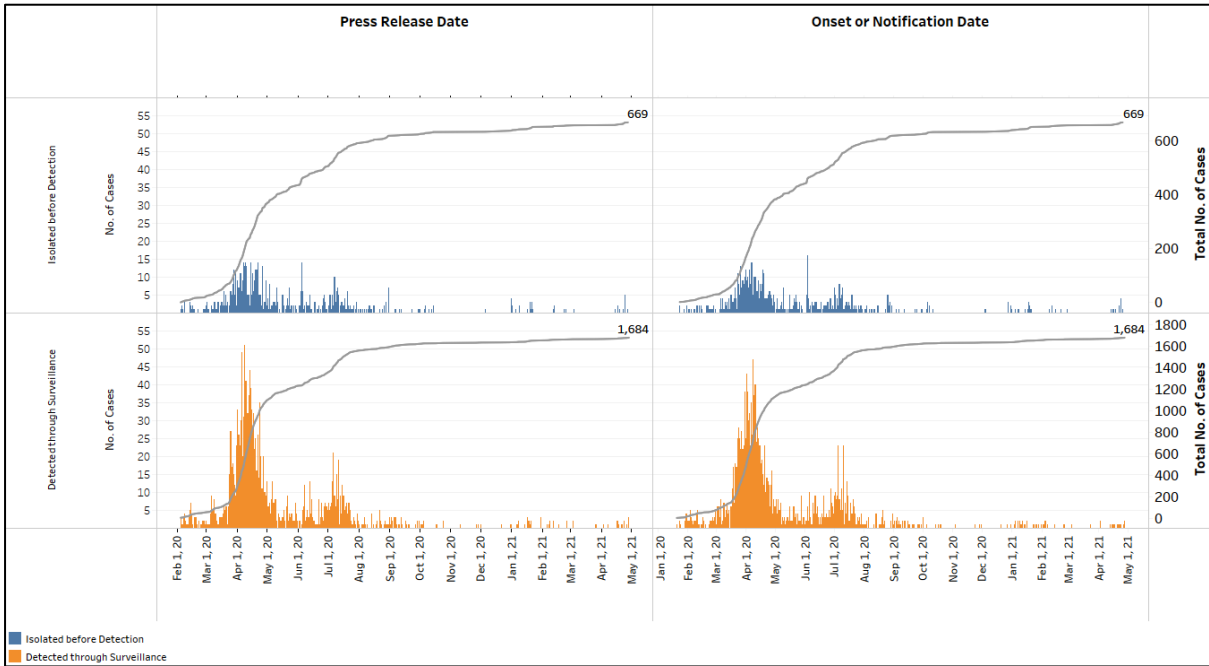
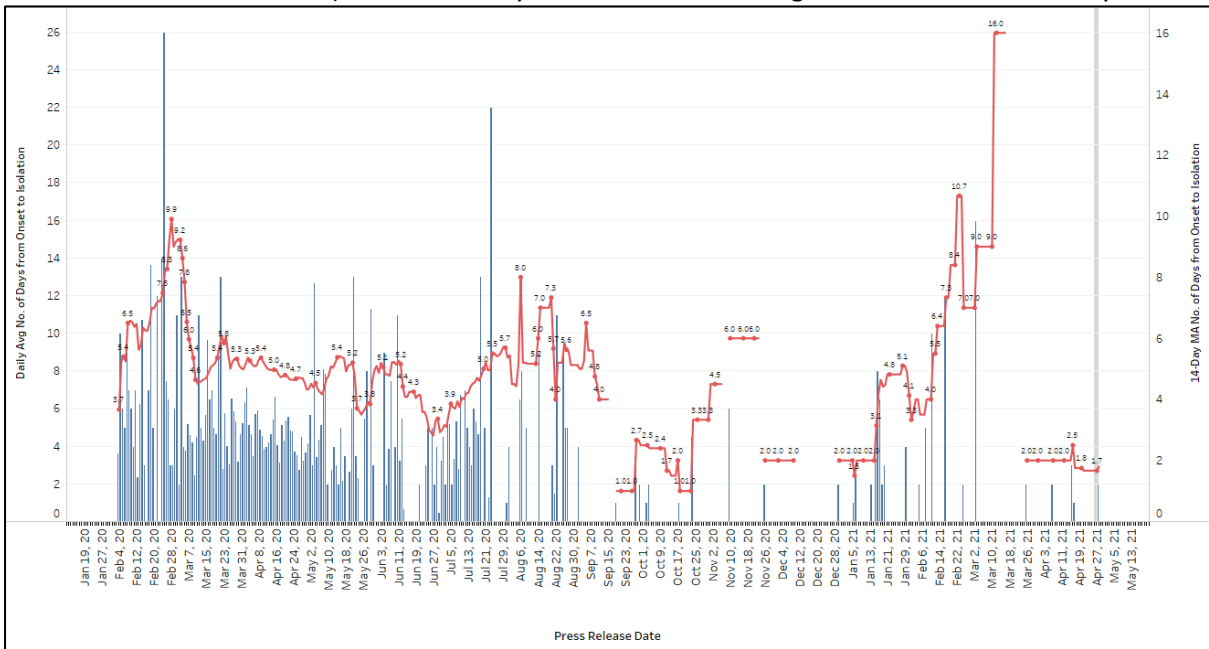


Figure 1.7: Average Number of Days from Onset of Symptoms to Isolation (QO, hospital admission or notification to MOH) for Community Cases Detected through Surveillance in Each Day



Line represents the 14-day moving average; Bar represents the daily average⁷

⁶ Date of notification was used for cases that did not display any symptoms. The numbers with onset in the past few days may see an increase as more cases are notified.

⁷ Area in grey demarcates data points for the past 3 days where some cases may still be pending epidemiological investigation. The bar graph shows the daily average number of days from symptoms onset to isolation, while the line graph shows the moving average for the past 14 days. Both graphs exclude cases with no onset date (asymptomatic) in the computation of the average. Community cases with symptoms who are isolated on the same day that symptoms occurred would have an isolation time of 0. There is a gap in the line graph from 16 to 18 Sep as there are no symptomatic cases in the preceding 14 days.

Figure 1.8: Weekly Reclassifications of Previously Reported Cases (*next update will be on 03 May*)

	Imported	Community Linked	Community Unlinked	Dorm Residents	Total
Total number of cases as at 19 Apr	3,998	1,541	800	54,512	60,851
Cases reported 20 Apr - 26 Apr	186	6	4	4	200
Net reclassifications of previously reported cases, incorporated 20 Apr - 26 Apr	0	2	-2	0	0
Total number of cases as at 26 Apr	4,184	1,549	802	54,516	61,051

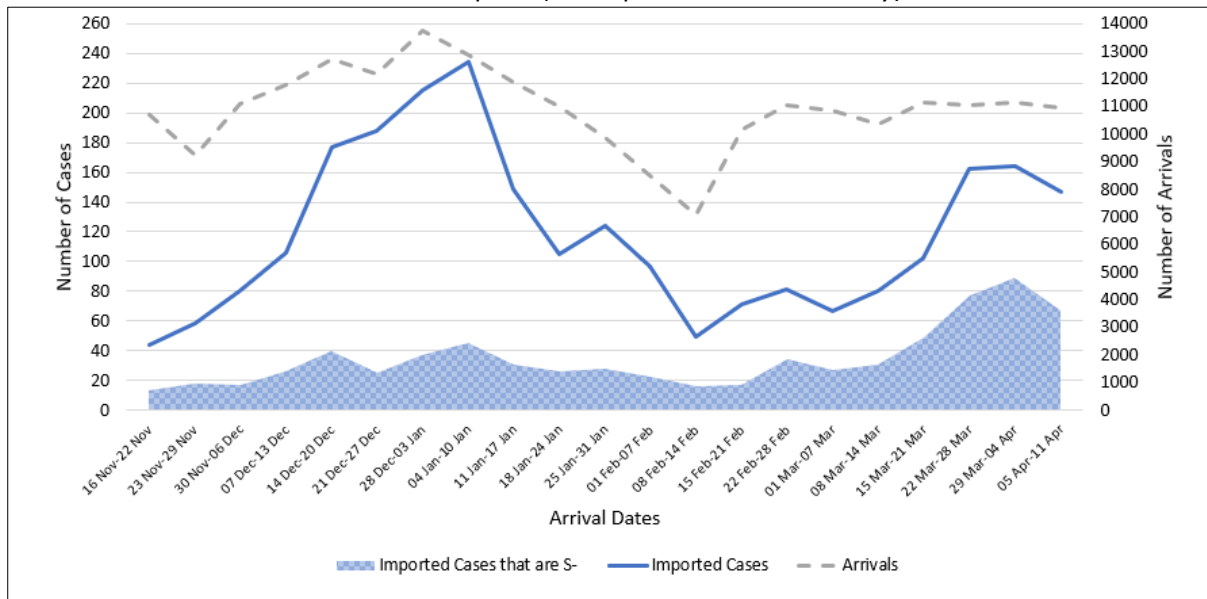
Case Number	PR date	Occupation	Link Reclassification	Rationale for Link Reclassification
59243	13 Jan 21	Construction and General Foreman	Dorm Unlinked → Dorm Linked (Seatown Dorm)	Case is linked to Seatown Dorm due to eight serology positive dorm residents who were close contacts.
60448	25 Feb 21	Steel Lashing Specialist	Community Unlinked → Community Linked (Vessels)	Case is linked to vessels due to his exposure to foreign crew.
62045	17 Apr 21	Accountant	Community Unlinked → Community Linked to Cluster 62045	Cluster 62045 was named on 20 Apr 2021. Case is linked to Case 61536.

(2) Imported COVID-19 Cases

Figure 2.1: Serology and Symptom Status of Imported Cases Reported from 15 Apr to 21 Apr

Symptoms	S+	S-	Not Serology Tested	Pending Serology Result	Total No. of Cases
Asymptomatic	61	70	0	4	135
Symptomatic	2	13	0	1	16
Total	63	83	0	5	151

Figure 2.2: Weekly Total Number of Imported Cases, Imported Cases that are S- and Arrivals from 16 Nov 20 to 11 Apr 21 (next update will be on 3 May)⁸



⁸ Data from the past 2 weeks are excluded as arrivals on SHN who arrived in the past 2 weeks may not have their SHN exit test results yet. "Imported Cases that are S-" comprises imported cases who are (a) serology negative; or (b) not tested for serology. "Imported Cases with Ct values 30 and below" have low Ct values which are suggestive of high viral load. Notwithstanding, Ct values should be interpreted with caution along with other epidemiological and clinical factors.

(3) Number of COVID-19 Cases in Hospitals and Community Care Facilities**Figure 3.1:** Summary of Confirmed Cases by Status in the Past 14 Days

Press Release Date	Currently Admitted in Hospitals		In Care Facilities ⁹	Total Recovered		Total Demised	Total
	ICU	General Wards		Completed Isolation	Discharged from Hospital		
15-Apr	2	55	231	57,183	3,234	30	60,735
16-Apr	2	49	242	57,209	3,237	30	60,769
17-Apr	2	60	253	57,224	3,239	30	60,808
18-Apr	2	66	248	57,241	3,244	30	60,831
19-Apr	1	78	239	57,256	3,247	30	60,851
20-Apr	1	73	221	57,288	3,252	30	60,865
21-Apr	1	69	204	57,315	3,261	30	60,880
22-Apr	1	66	204	57,338	3,265	30	60,904
23-Apr	1	79	220	57,346	3,267	30	60,943
24-Apr	1	87	219	57,356	3,273	30	60,966
25-Apr	1	93	220	57,386	3,276	30	61,006
26-Apr	0	109	230	57,403	3,279	30	61,051
27-Apr	0	108	221	57,418	3,286	30	61,063
28-Apr	0	112	226	57,430	3,288	30	61,086

⁹ Community Care Facilities (i.e. D'Resort, EXPO, Tuas South), Private Hospitals (i.e. Concord International Hospital, Mt Elizabeth Hospital, Gleneagles Hospital, Mt Elizabeth Novena Hospital, Parkway East Hospital), Community Hospitals (i.e. Bright Vision Hospital) and other care facilities.

(4) Number of Stay-Home-Notice (SHN) Issued

Figure 4.1: Daily Number of SHN issued (19 Feb 2020 to 27 Apr 2021)

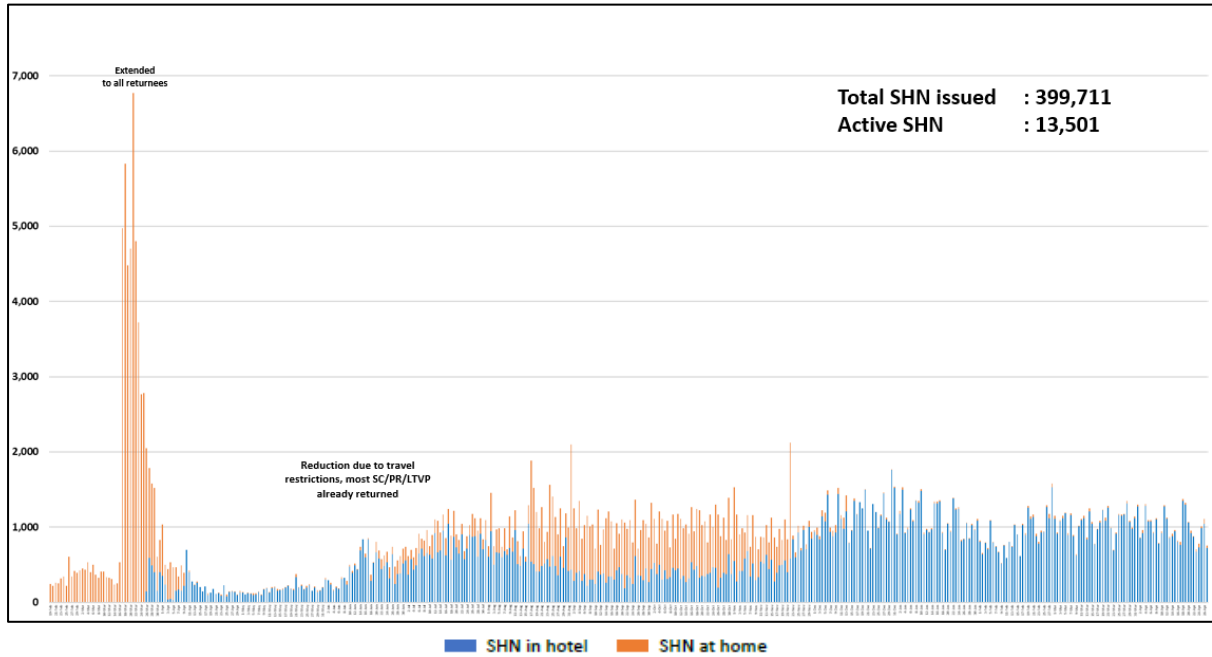
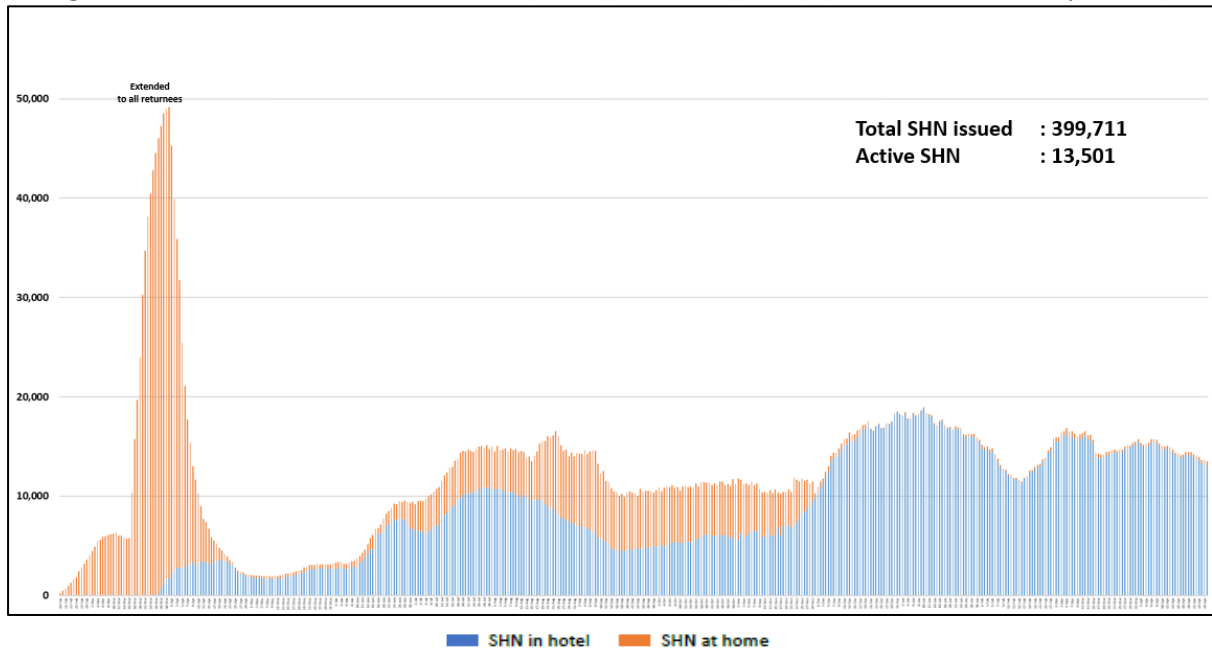


Figure 4.2: Active Stock Number of SHN (Home) and SHN (Hotel) (19 Feb 2020 to 27 Apr 2021)



(5) Number of Quarantine Orders (QO) Generated

Figure 5.1: Daily Number of QOs Generated

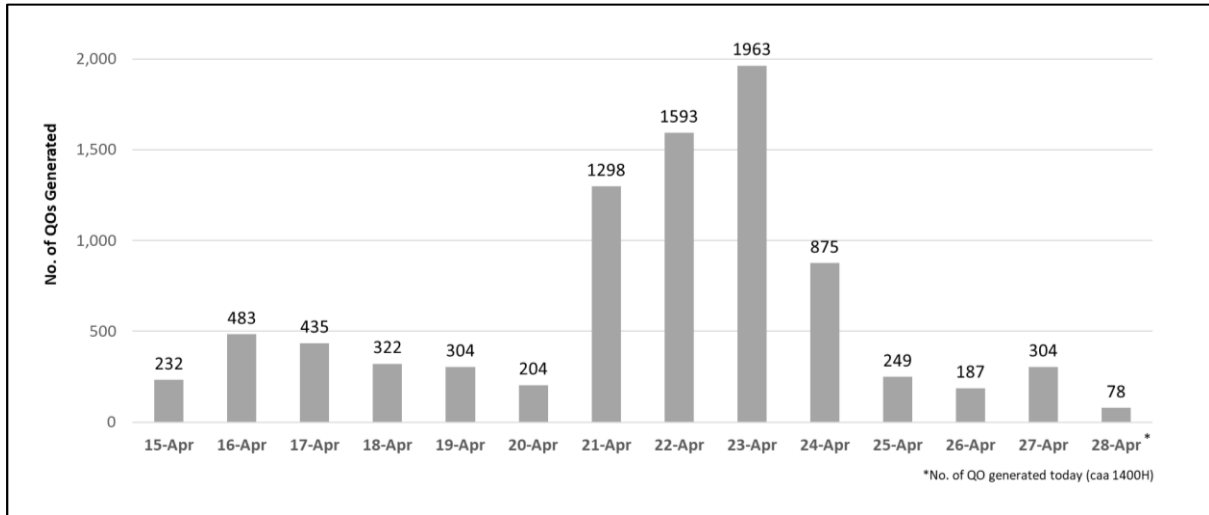


Figure 5.2: Active Number of Persons Under Quarantine (PUQs)

