

30 January 2021 Daily Report on COVID-19**(1) Number of COVID-19 Cases****Figure 1.1:** Breakdown of New Confirmed Cases in the Past 14 Days

Press Release Date	Imported			Non-Imported Cases														All Cases
				Community Cases								Dorm Residents ¹						
	Isolated before Detection	Detected through Surveillance ²	Sub-Total	Isolated before Detection ³				Detected through Surveillance ⁴				Sub-Total	Incidence Rate ⁵ (per 100,000)	Isolated before Detection ³	Detected through Surveillance ⁴	No. of Cases	Incidence Rate ⁵ (per 100,000)	
				SC/PR	G or F	Visitor	Sub-Total	SC/PR	G or F	Visitor	Sub-Total							
Before 17-Jan	1,992	287	2,279	377	265	2	644	1,001	641	10	1,652	2,296	-	54,508		54,508	-	59,083
17-Jan	27	1	28	0	0	0	0	2	0	0	2	2	0.037	0	0	0	0	30
18-Jan	12	0	12	0	0	0	0	1	1	0	2	2	0.037	0	0	0	0	14
19-Jan	24	2	26	1	2	0	3	1	0	0	1	4	0.074	0	0	0	0	30
20-Jan	36	0	36	0	1	0	1	0	3	0	3	4	0.074	0	0	0	0	40
21-Jan	32	2	34	2	1	0	3	1	0	0	1	4	0.074	0	0	0	0	38
22-Jan	13	1	14	0	1	0	1	0	0	0	0	1	0.019	0	0	0	0	15
23-Jan	10	0	10	0	0	0	0	0	0	0	0	0	0	0	0	0	0	10
24-Jan	48	0	48	0	0	0	0	0	0	0	0	0	0	0	0	0	0	48
25-Jan	43	1	44	0	0	0	0	0	0	0	0	0	0	0	0	0	0	44
26-Jan	14	0	14	0	0	0	0	0	0	0	0	0	0	0	0	0	0	14
27-Jan	25	0	25	0	0	0	0	0	0	0	0	0	0	0	0	0	0	25
28-Jan	32	2	34	0	0	0	0	0	0	0	0	0	0	0	0	0	0	34
29-Jan	24	0	24	0	0	0	0	0	0	0	0	0	0	0	0	0	0	24
30-Jan	55	0	55	0	0	0	0	3	0	0	3	3	0.056	0	0	0	0	58
Total since start of outbreak	2,387	296	2,683	380	270	2	652	1,009	645	10	1,664	2,316	-	54,508		54,508	-	59,507
Population at risk												5,381,000				323,000		5,704,000
Prevalence												0.04%				16.88%		1.04%

Notes

¹ Includes PRs and visitors residing in dorms. Breakdown of dorm cases into those detected through surveillance and those isolated before detection is not available before 24 Aug.

² 272 cases were reported before early Apr, and constitute the 1st wave of imported cases.

³ Cases who were already quarantined and tested during quarantine to determine their status.

⁴ Cases who were identified through surveillance testing, such as the bi-weekly Rostered Routine Testing (RRT) of at-risk workers and testing of those with Acute Respiratory Illness (ARI) symptoms.

⁵ Incidence rates are rounded to two significant figures.

Figure 1.2: Epidemic Curve of the COVID-19 Outbreak by Press Release Date

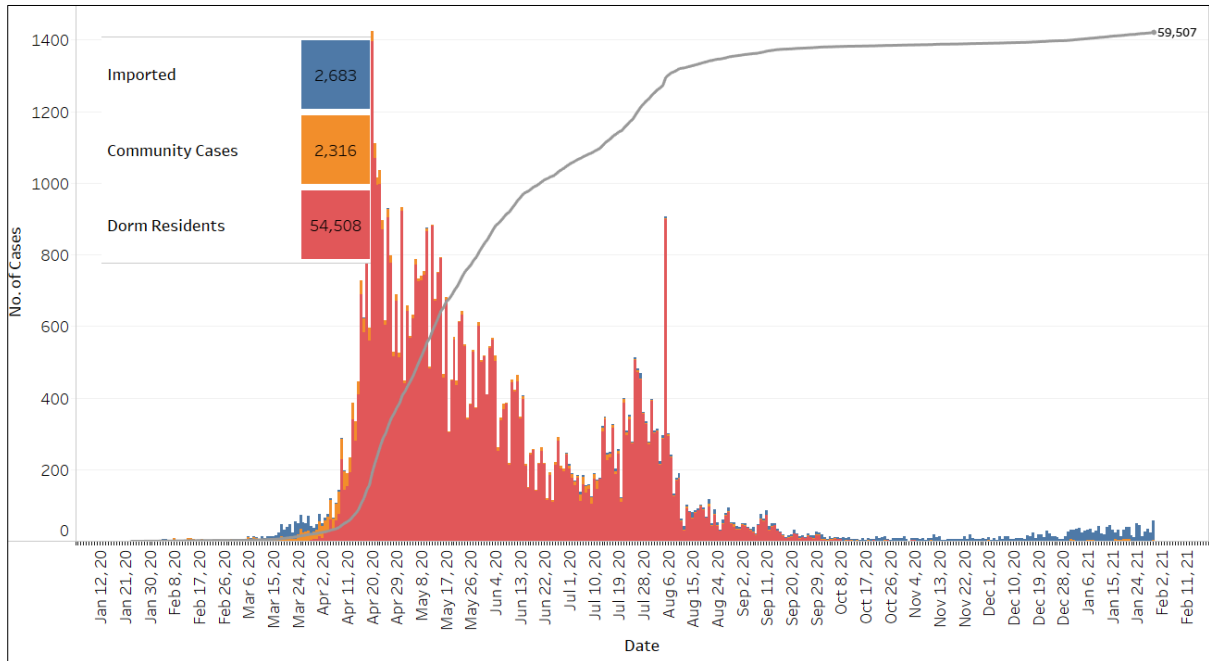


Figure 1.3: Epidemic Split Curve of the COVID-19 Outbreak by Press Release Date

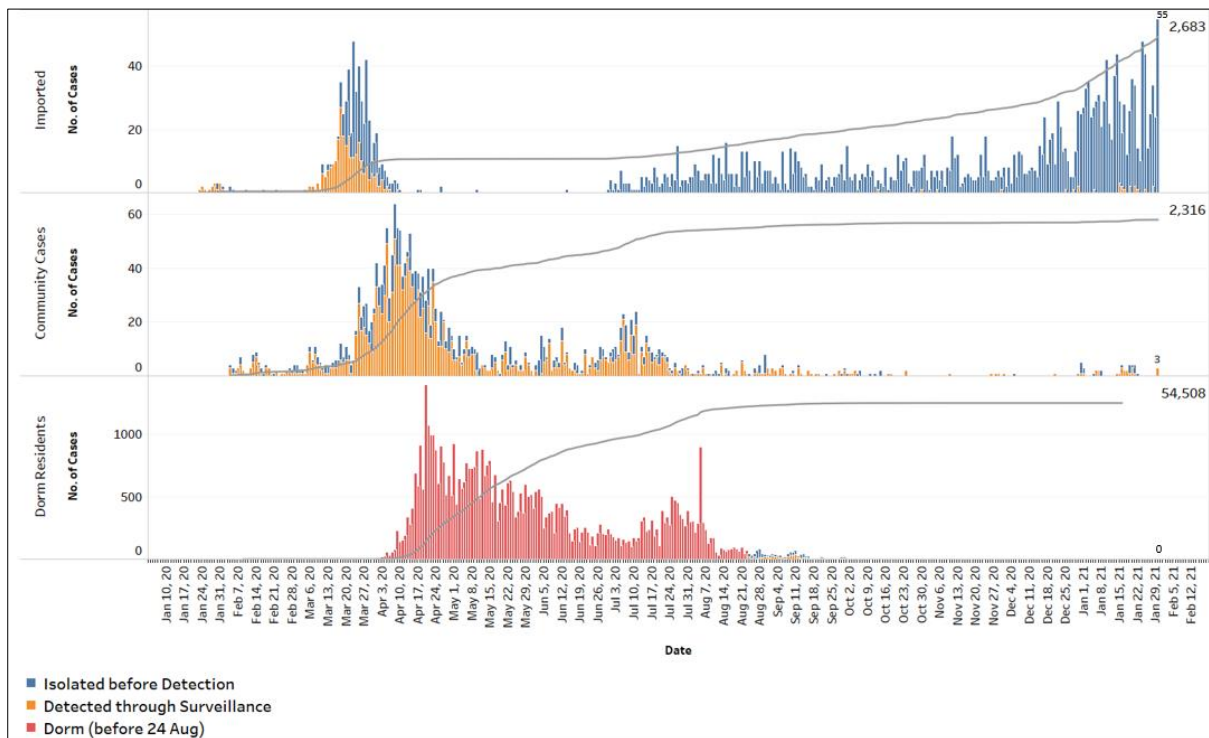


Figure 1.4: Epidemic Curve of Imported Cases by Press Release Date (left panel) and Arrival Date (right panel)

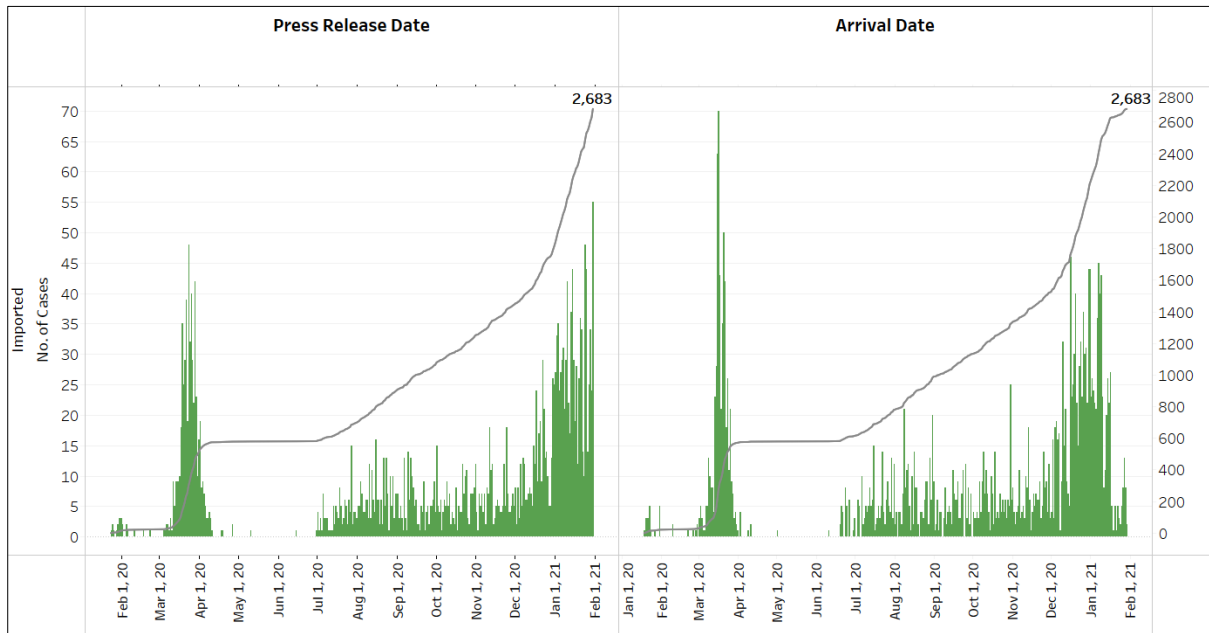
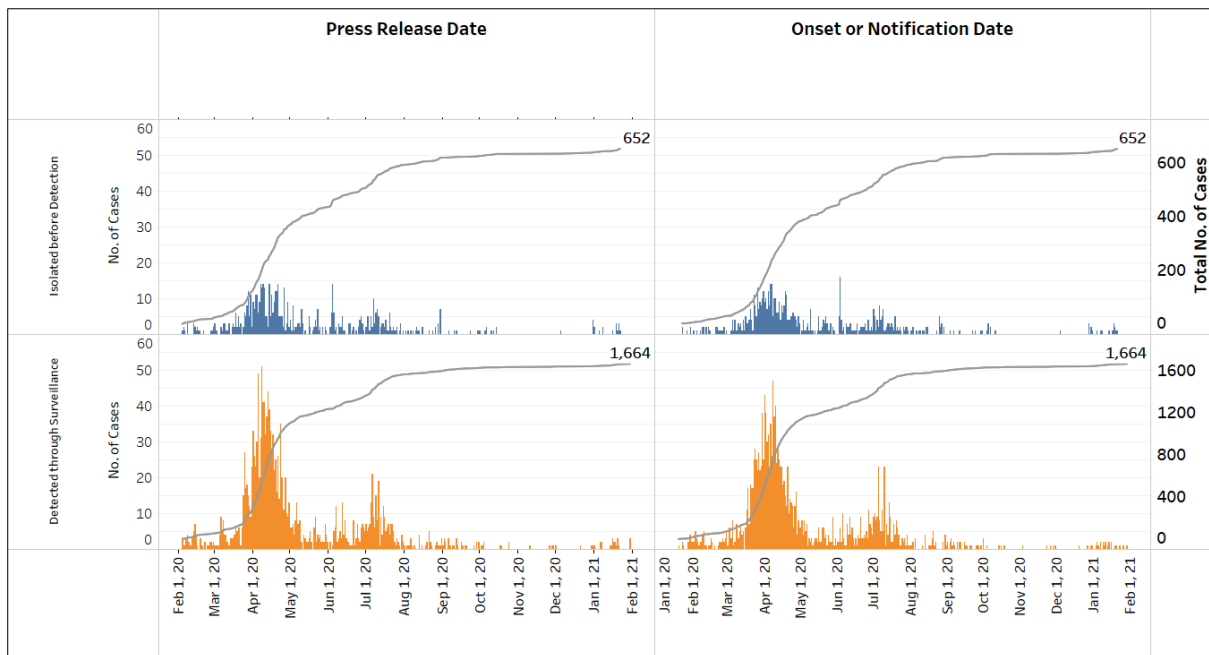
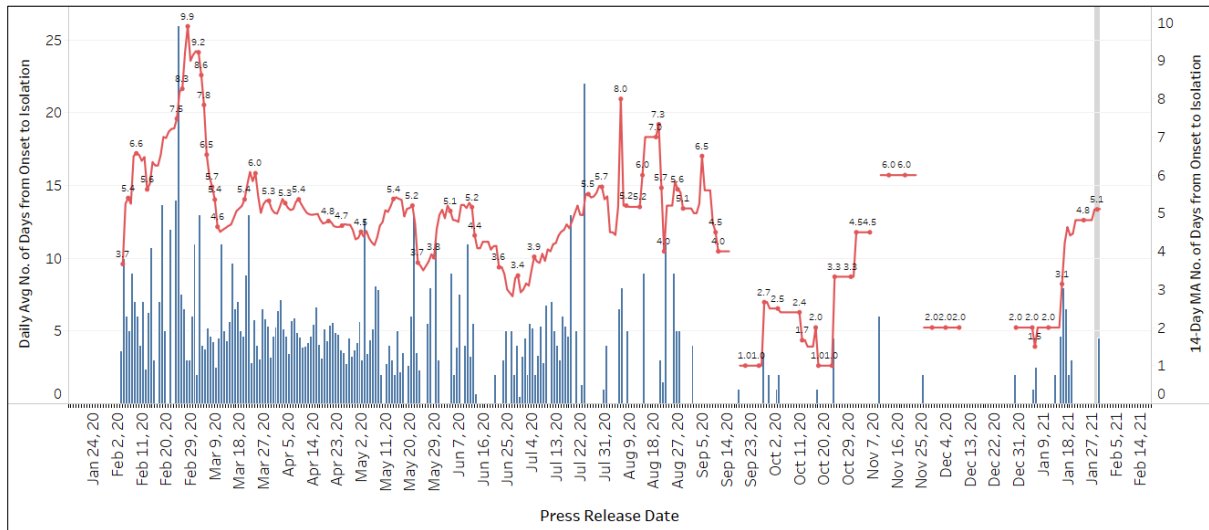


Figure 1.5: Epidemic Curve of Community Cases by Press Release Date (left panel) and by Symptom Onset or Notification Date⁶ (right panel)



⁶ Date of notification was used for cases that did not display any symptoms. The numbers with onset in the past few days may see an increase as more cases are notified.

Figure 1.6: Average Number of Days from Onset of Symptoms to Isolation (QO, hospital admission or notification to MOH) for Community Cases Detected through Surveillance in Each Day



Line represents the 14-day moving average; Bar represents the daily average⁷

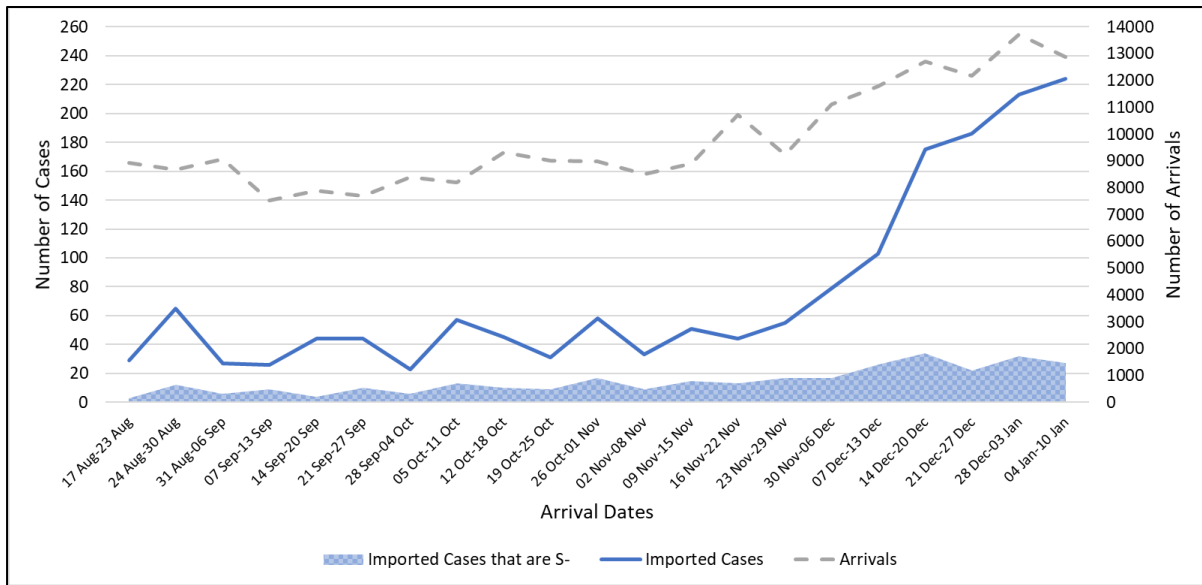
⁷ Area in grey demarcates data points for the past 3 days where some cases may still be pending epidemiological investigation. The bar graph shows the daily average number of days from symptoms onset to isolation, while the line graph shows the moving average for the past 14 days. Both graphs exclude cases with no onset date (asymptomatic) in the computation of the average. Community cases with symptoms who are isolated on the same day that symptoms occurred would have an isolation time of 0. There is a gap in the line graph from 16 to 18 Sep as there are no symptomatic cases in the preceding 14 days.

(2) Imported COVID-19 Cases

Figure 2.1: Serology and Symptom Status of Imported Cases Reported from 17 Jan to 23 Jan

Symptoms	S+	S-	Not Serology Tested	Pending Serology Result	Total No. of Cases
Asymptomatic	128	11	0	8	147
Symptomatic	2	10	0	1	13
Total	130	21	0	9	160

Figure 2.2: Weekly Total Number of Imported Cases, Imported Cases that are S- and Arrivals from 17 Aug 20 to 10 Jan 21⁸ (next update will be on 1 Feb)



⁸ Data from the past 2 weeks are excluded as cases on SHN who arrived in the past 2 weeks may not have their test results yet. "Imported Cases that are S-" comprises imported cases who are (a) serology negative; or (b) not tested for serology.

(3) Number of COVID-19 Cases in Hospitals and Community Care Facilities**Figure 3.1:** Summary of Confirmed Cases by Status in the Past 14 Days

Press Release Date	Currently Admitted in Hospitals		In Care Facilities ⁹	Total Recovered		Total Demised	Total
	ICU	General Wards		Completed Isolation	Discharged from Hospital		
17-Jan	0	49	189	55,881	2,965	29	59,113
18-Jan	0	44	186	55,891	2,977	29	59,127
19-Jan	0	45	189	55,910	2,984	29	59,157
20-Jan	1	44	197	55,938	2,988	29	59,197
21-Jan	1	42	204	55,966	2,993	29	59,235
22-Jan	1	40	197	55,987	2,996	29	59,250
23-Jan	0	38	178	56,016	2,999	29	59,260
24-Jan	0	50	188	56,039	3,002	29	59,308
25-Jan	0	59	198	56,061	3,005	29	59,352
26-Jan	0	50	201	56,072	3,014	29	59,366
27-Jan	0	38	220	56,082	3,022	29	59,391
28-Jan	0	40	208	56,124	3,024	29	59,425
29-Jan	0	47	192	56,154	3,027	29	59,449
30-Jan	0	46	236	56,167	3,029	29	59,507

⁹ Community Care Facilities (i.e. D'Resort, EXPO, Tuas South), Private Hospitals (i.e. Concord International Hospital, Mt Elizabeth Hospital, Gleneagles Hospital, Mt Elizabeth Novena Hospital, Parkway East Hospital), Community Hospitals (i.e. Bright Vision Hospital) and other care facilities.

(4) Number of Stay-Home-Notice (SHN) Issued

Figure 4.1: Daily Number of SHN issued (19 Feb 2020 to 29 Jan 2021)

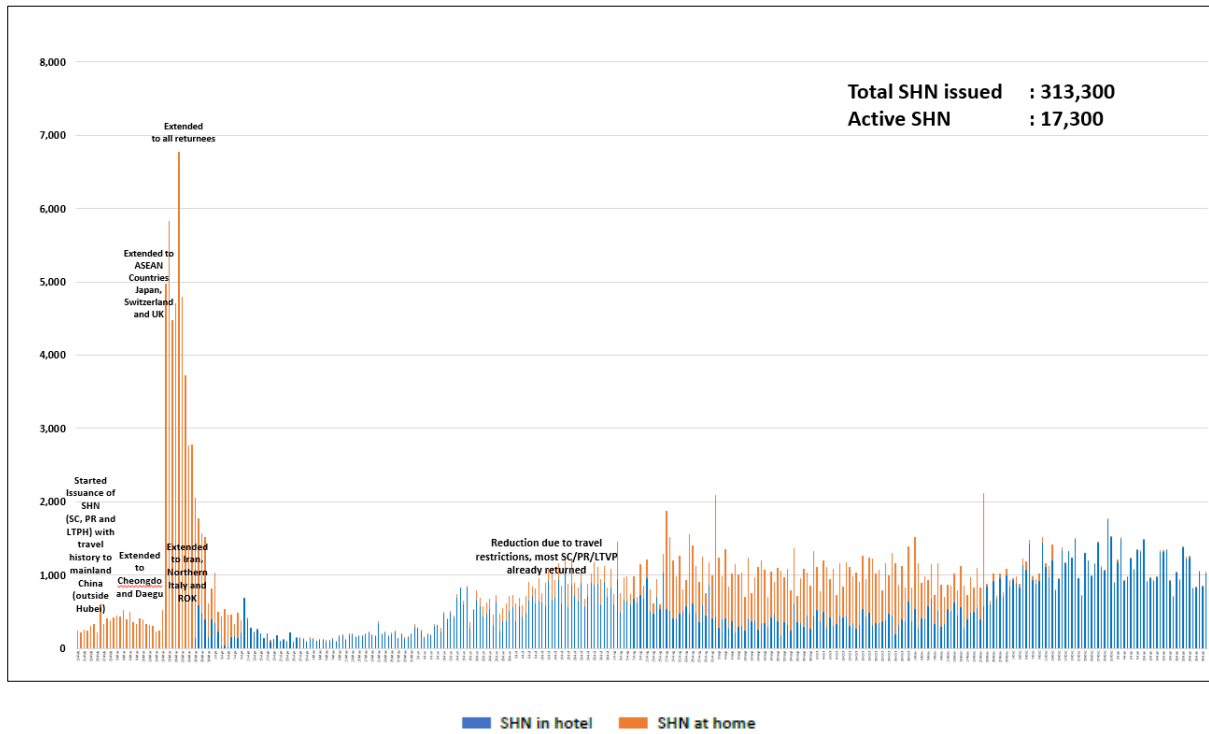
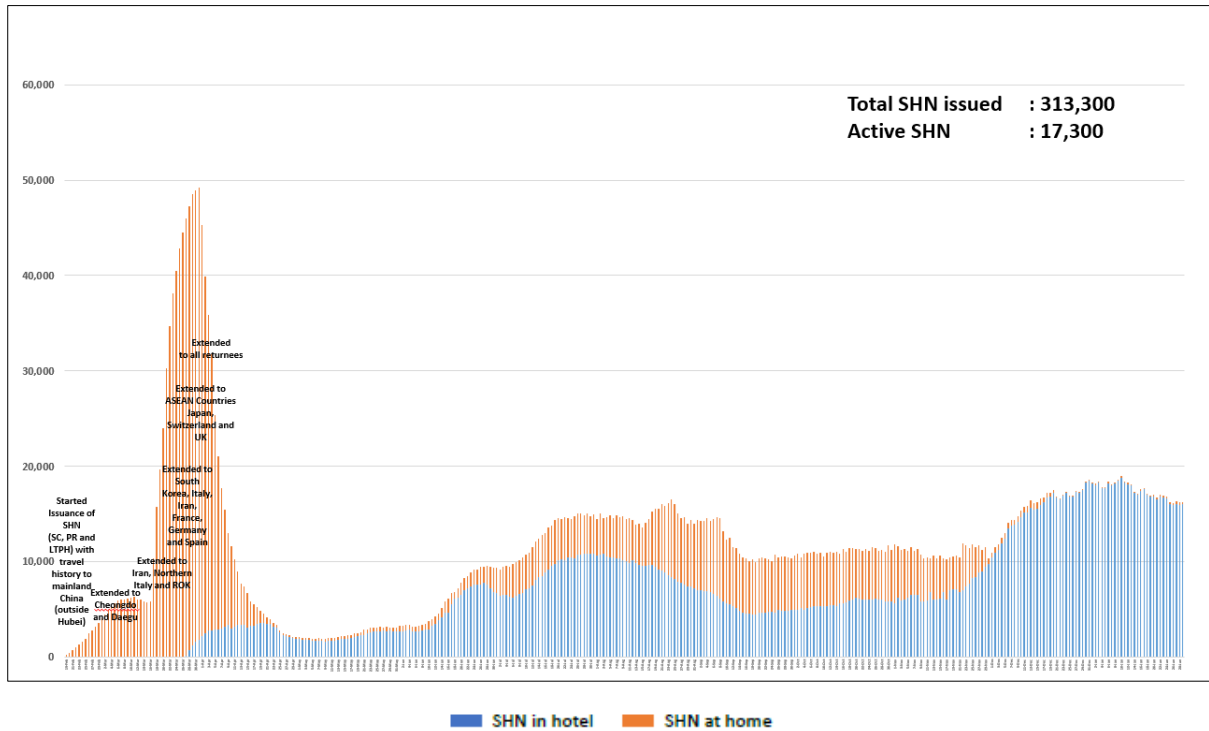


Figure 4.2: Active Stock Number of SHN (Home) and SHN (Hotel) (19 Feb 2020 to 29 Jan 2021)



(5) Number of Quarantine Orders (QO) Issued

Figure 5.1: Daily Number of QOs Issued

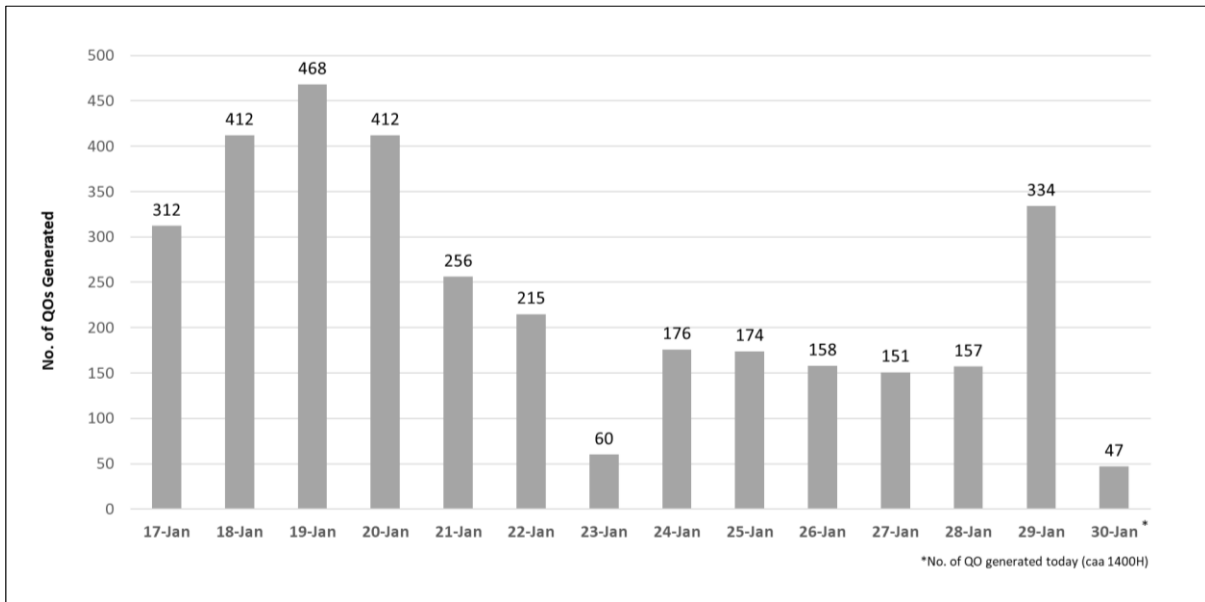


Figure 5.2: Active Number of Persons Under Quarantine (PUQs)

