

**30 June 2020 Daily Report on COVID-19****(1) Number of COVID-19 Cases****Figure 1.1:** Number of Cases Reported over the Past 14 Days

Press Release Date	Imported	Non-Imported Cases														All Cases
		Community Cases <sup>1</sup>										Dorm Residents				
		Linked Cases					Unlinked Cases <sup>2</sup>					Sub-Total	Incidence Rate (per 100,000)	No. of Cases	Incidence Rate (per 100,000)	
		SC/PR	G or F (work permit)	G or F (other pass types) <sup>3</sup>	Visitor	Sub-Total	SC/PR	G or F (work permit)	G or F (other pass types) <sup>4</sup>	Visitor	Sub-Total					
Before 17-Jun	581	755	268	150	4	1,177	437	113	70	4	624	1,801	-	38,587	-	40,969
17-Jun	0	1	2	0	0	3	1	1	0	0	2	5	0.093	242	75	247
18-Jun	0	0	3	0	0	3	1	0	0	0	1	4	0.074	253	78	257
19-Jun	0	0	0	0	0	0	0	0	0	1	1	1	0.019	141	44	142
20-Jun	0	0	1	0	0	1	0	1	0	0	1	2	0.037	216	67	218
21-Jun	0	1	2	4	0	7	2	1	0	0	3	10	0.19	252	78	262
22-Jun	0	0	0	0	0	0	0	1	0	0	1	1	0.019	217	67	218
23-Jun	0	0	1	0	0	1	1	1	1	0	3	4	0.074	115	36	119
24-Jun	0	1	1	2	0	4	1	2	0	0	3	7	0.13	184	57	191
25-Jun	0	0	2	0	0	2	1	0	2	0	3	5	0.093	108	33	113
26-Jun	0	4	0	1	0	5	1	0	0	0	1	6	0.11	213	66	219
27-Jun	0	3	1	1	0	5	2	3	1	0	6	11	0.20	280	87	291
28-Jun	0	2	1	0	0	3	4	2	2	0	8	11	0.20	202	63	213
29-Jun	0	1	1	0	0	2	3	1	0	0	4	6	0.11	196	61	202
30-Jun	1	1	0	0	0	1	1	3	0	0	4	5	0.093	240	74	246
Total since start of outbreak	582	769	283	158	4	1,214	455	129	76	5	665	1,879	-	41,446	-	43,907
Population at risk <sup>4</sup>												5,381,000		323,000		5,704,000
Prevalence												0.03%		12.83%		0.77%

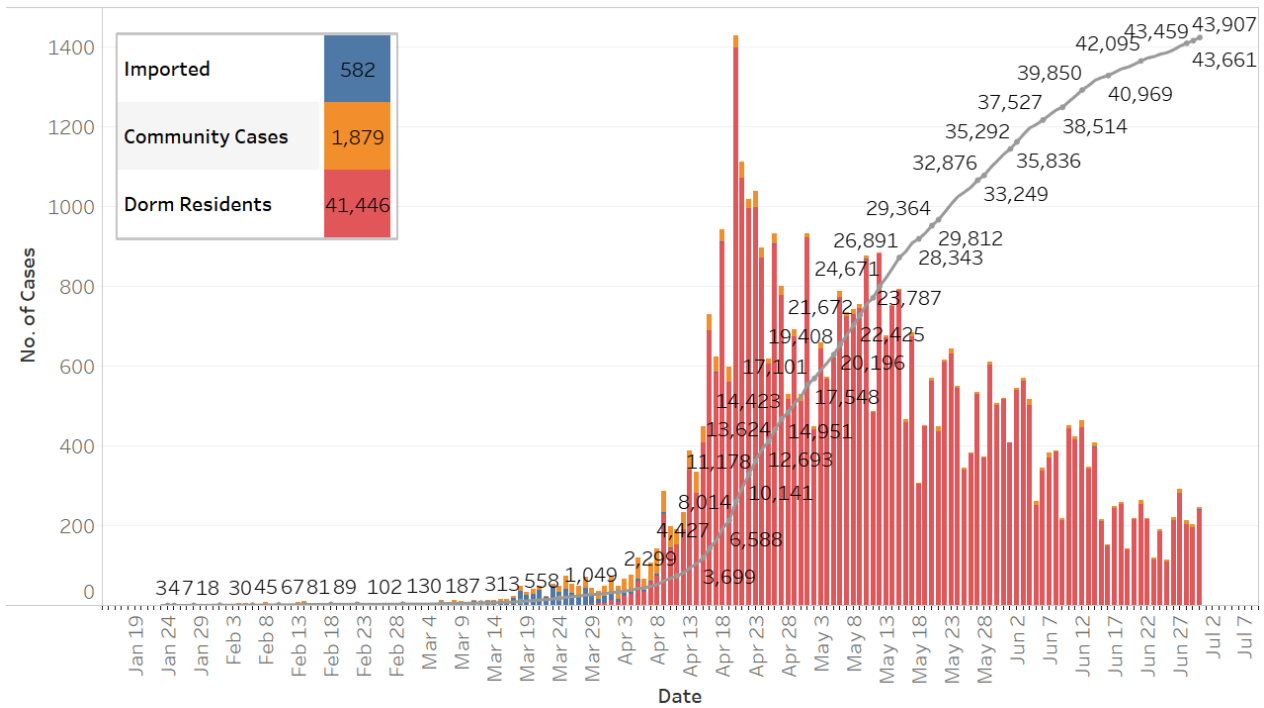
<sup>1</sup> Previously we had tracked the work permit holders living outside dormitories as a separate category, and put a large number of these workers on Stay Home Notices (SHN). The SHN for these workers has since expired. Hence we have now updated the definition of "Cases in the Community" to include all cases (including amongst work permit holders) that are detected outside of the dormitories.

<sup>2</sup> Includes cases pending epi-investigation.

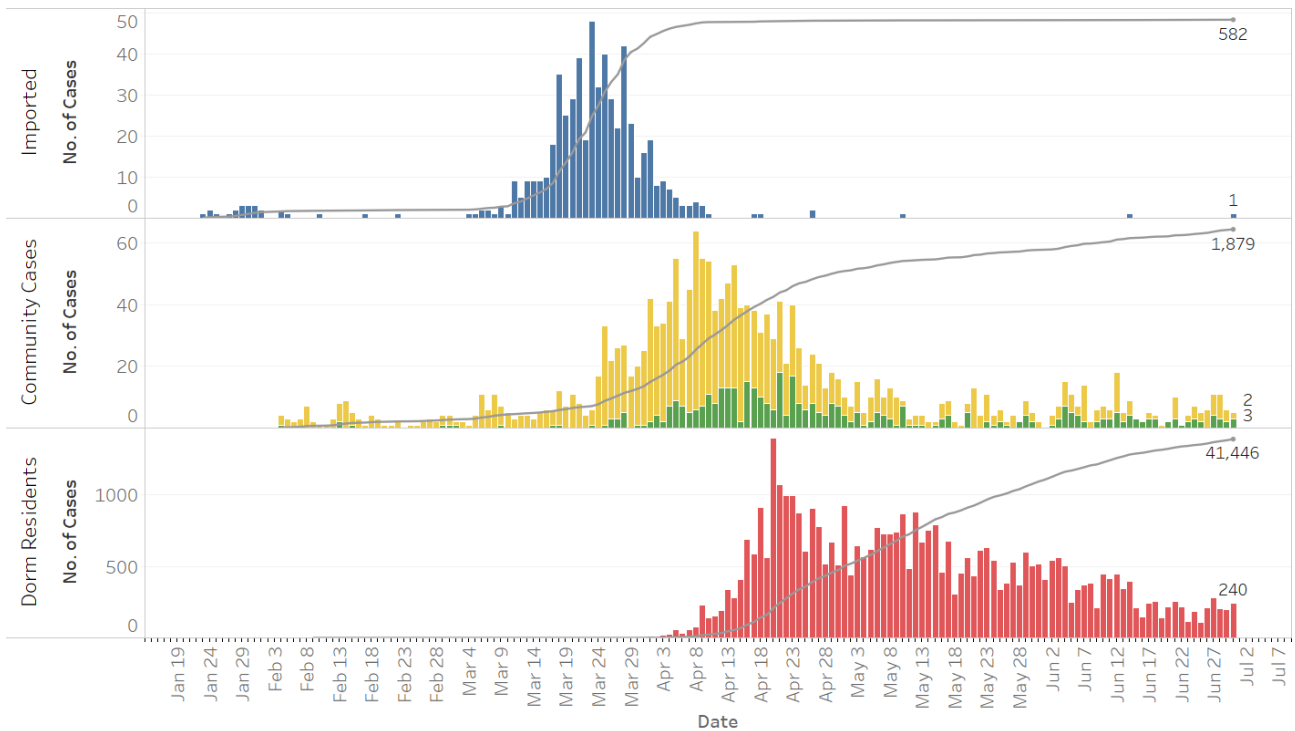
<sup>3</sup> Includes Training Work Permit (TWP) holders.

<sup>4</sup> Population at risk for community cases includes SC/PRs and work pass holders not residing in dormitories. Source: MOM and Singstat.

**Figure 1.2:** Epidemic Curve of the COVID-19 Outbreak by Press Release Date



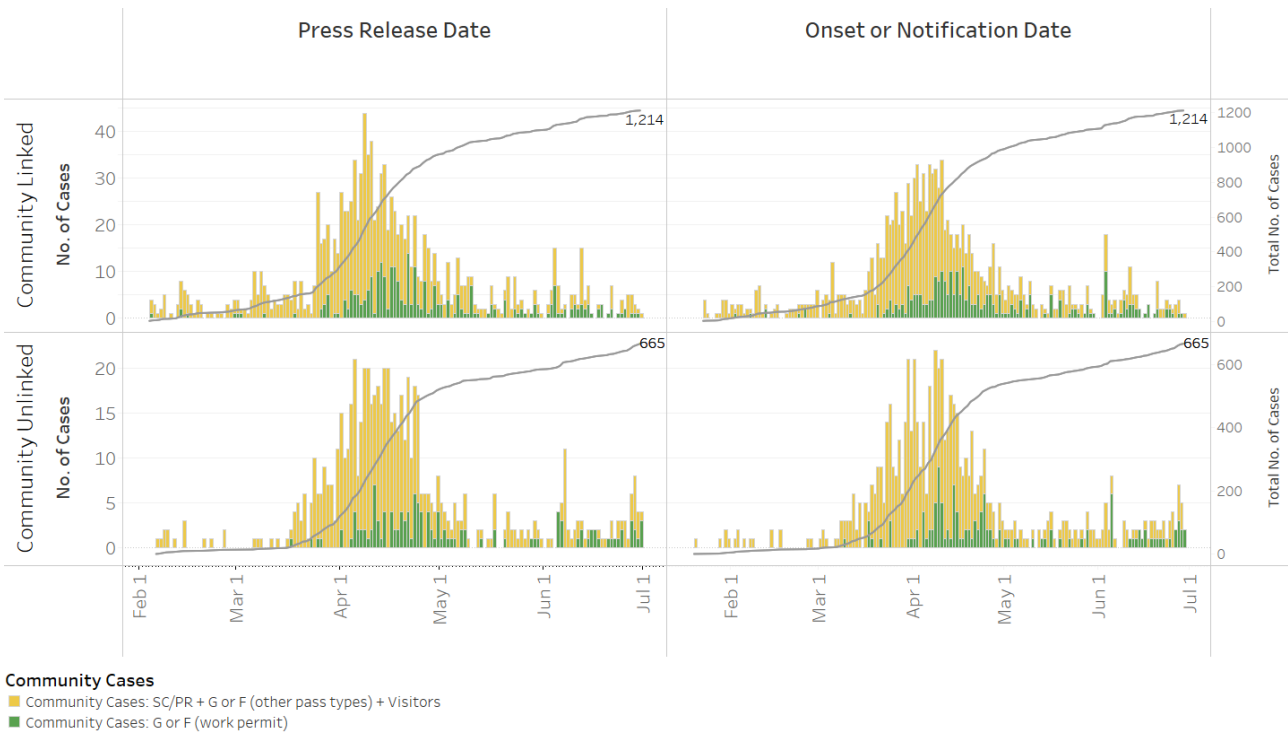
**Figure 1.3:** Epidemic Curve of the COVID-19 Outbreak by Press Release Date



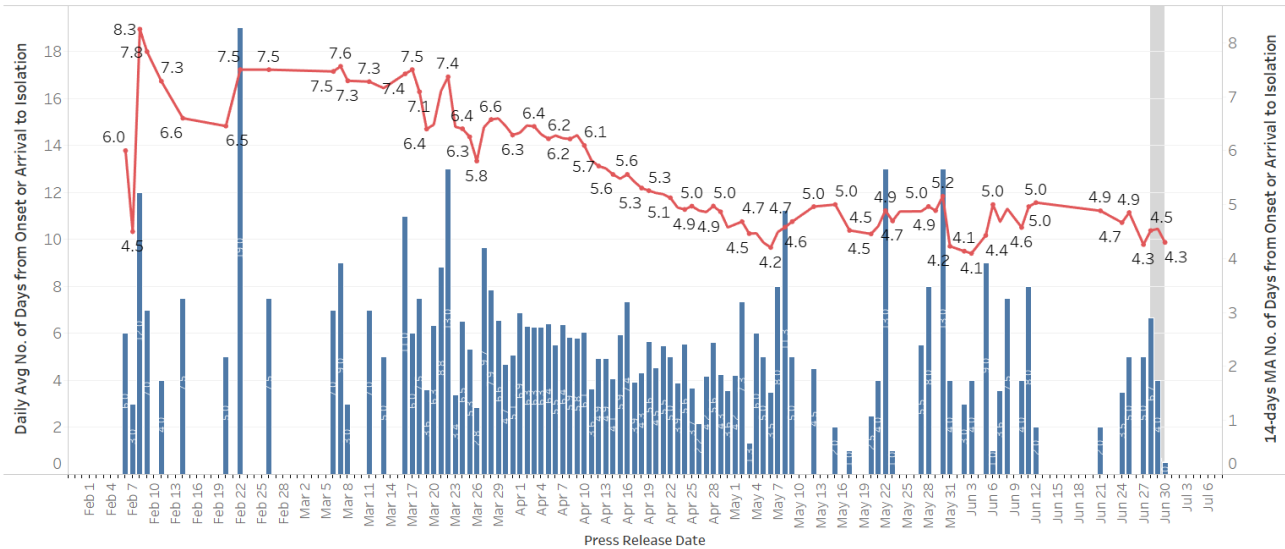
**COVID-19 Cases**

- Imported
- Community Cases: SC/PR + G or F (other pass types) + Visitors
- Community Cases: G or F (work permit)
- Dorm Residents

**Figure 1.4:** Epidemic Curve of Linked and Unlinked Cases among the Community by Press Release Date (left panel) and by Symptom Onset or Notification Date<sup>5</sup> (right panel)



**Figure 1.5:** Average Number of Days from Onset of Symptoms to Isolation (QO, MOH contact, notification or admission) for Community Unlinked Cases in Each Day<sup>6</sup>



*Line represents the 14-day moving average; Bar represents the daily average<sup>7</sup>*

<sup>5</sup> Date of notification was used for cases that did not display any symptoms. The numbers with onset in the past few days may see an increase as more cases are notified.

<sup>6</sup> Area in grey demarcates the data points for the past 3 days where some cases are still pending investigation. The bar chart shows the daily average number of days from onset date to isolation, while the line chart shows the moving average for the past 14 days. Both charts exclude cases with missing onset dates in the computation of the average.

<sup>7</sup> Asymptomatic community unlinked cases are not reflected in this chart. Community unlinked cases with symptoms who are isolated on the same day that symptoms occurred would have an isolation time of 0.

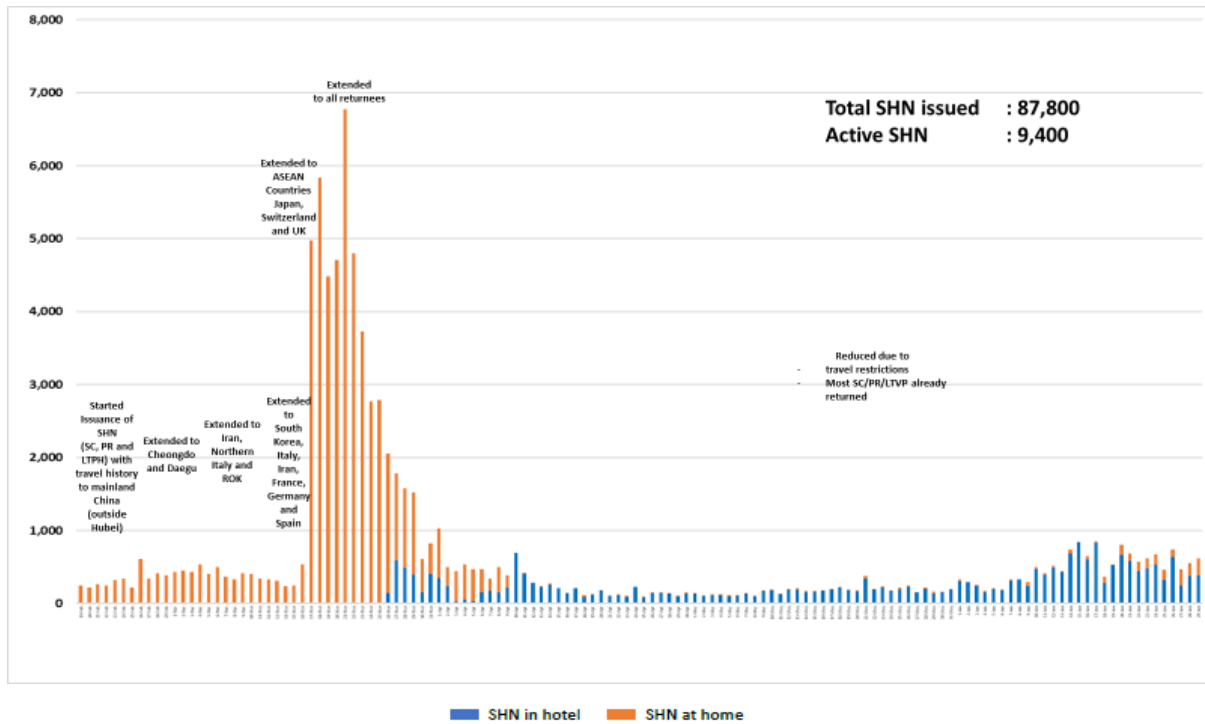
**(2) Number of COVID-19 Cases in Hospitals and Community Care Facilities****Figure 2.1:** Summary of Confirmed Cases by Status in the Past 14 Days

Press Release Date	Currently Admitted in Hospitals		In Care Facilities <sup>8</sup>	Total Recovered		Total Demised	Total
	ICU	General Wards		Completed Isolation	Discharged from Hospital		
17-Jun	2	255	8,995	30,277	1,661	26	41,216
18-Jun	2	223	8,510	31,046	1,666	26	41,473
19-Jun	2	210	7,918	31,781	1,678	26	41,615
20-Jun	1	184	7,398	32,540	1,684	26	41,833
21-Jun	1	178	6,948	33,247	1,695	26	42,095
22-Jun	1	199	6,497	33,882	1,708	26	42,313
23-Jun	1	191	6,219	34,283	1,712	26	42,432
24-Jun	1	188	6,109	34,582	1,717	26	42,623
25-Jun	1	188	5,917	34,886	1,718	26	42,736
26-Jun	1	182	5,921	35,095	1,730	26	42,955
27-Jun	1	173	5,883	35,429	1,734	26	43,246
28-Jun	1	183	5,741	35,756	1,752	26	43,459
29-Jun	1	196	5,453	36,224	1,761	26	43,661
30-Jun	1	214	5,166	36,734	1,766	26	43,907

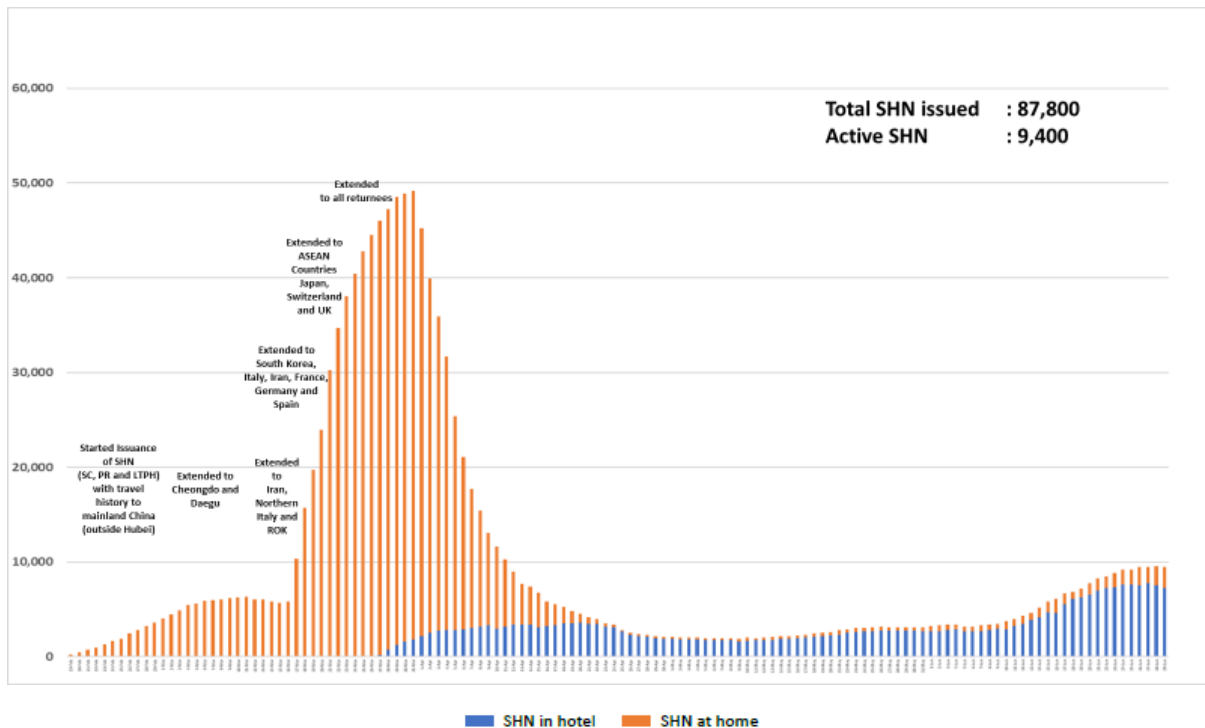
<sup>8</sup> Community Care/Recovery Facilities (i.e. D'Resort, EXPO, Changi Exhibition Centre, Tuas South), Private Hospitals (i.e. Concord International Hospital, Mt Elizabeth Hospital, Gleneagles Hospital, Mt Elizabeth Novena Hospital, Parkway East Hospital), Community Hospitals (i.e. Bright Vision Hospital, St. Andrew's Community Hospital, Jurong Community Hospital) and other care facilities.

### (3) Number of Stay-Home-Notice (SHN) Issued

**Figure 3.1:** Daily Number of SHN issued

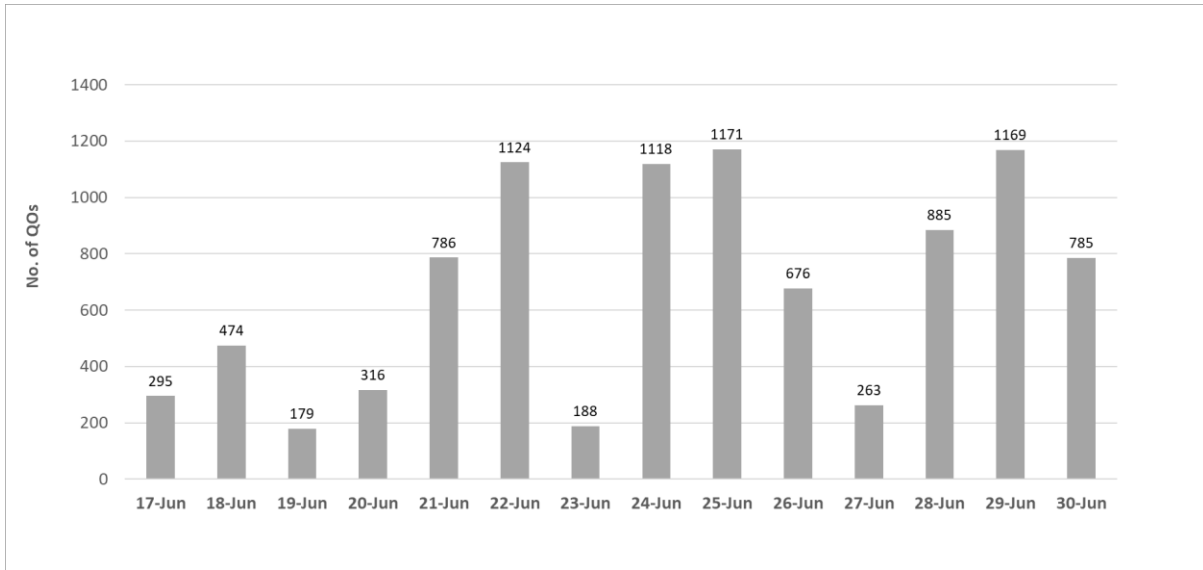


**Figure 3.2:** Active Stock Number of SHN (Home) and SHN (Hotel)

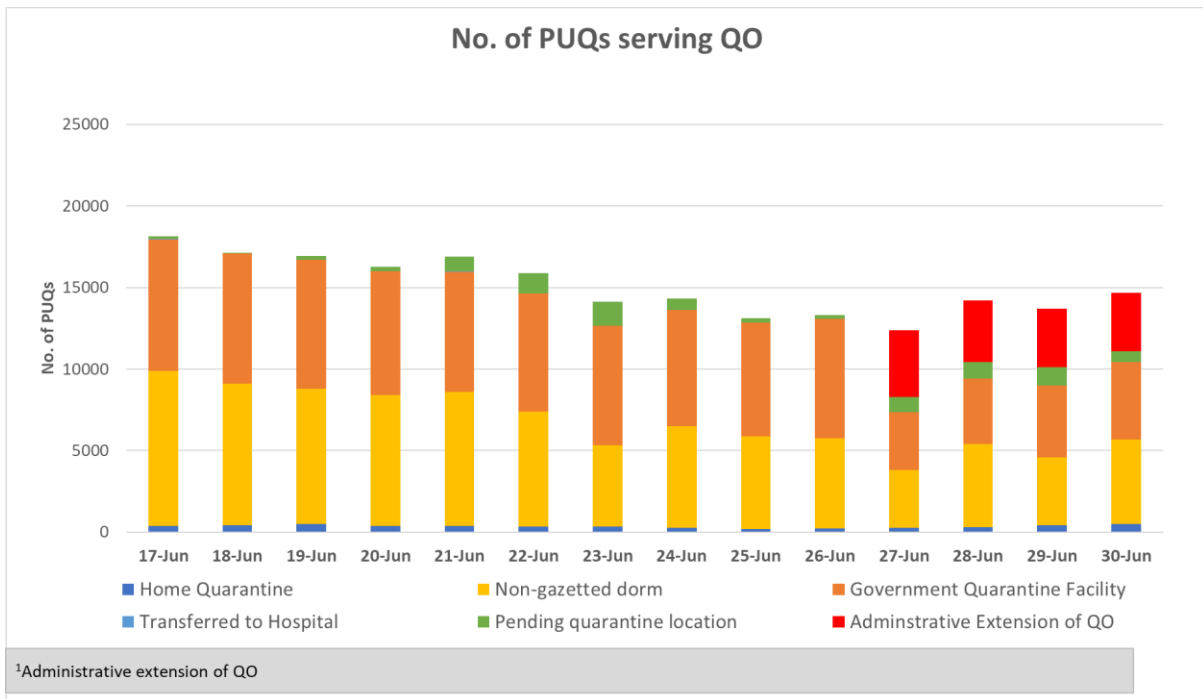


**(4) Number of Quarantine Order (QO) Issued**

**Figure 4.1:** Daily Number of QOs Issued



**Figure 4.2:** Active Number of Persons Under Quarantine (PUQs)<sup>9</sup>



<sup>9</sup> The number of PUQs at GQFs has been revised to align with Foreign Manpower Sub-Group & Tourists and Locals Sub-Group GQF Occupancy Status figures reported by MND.