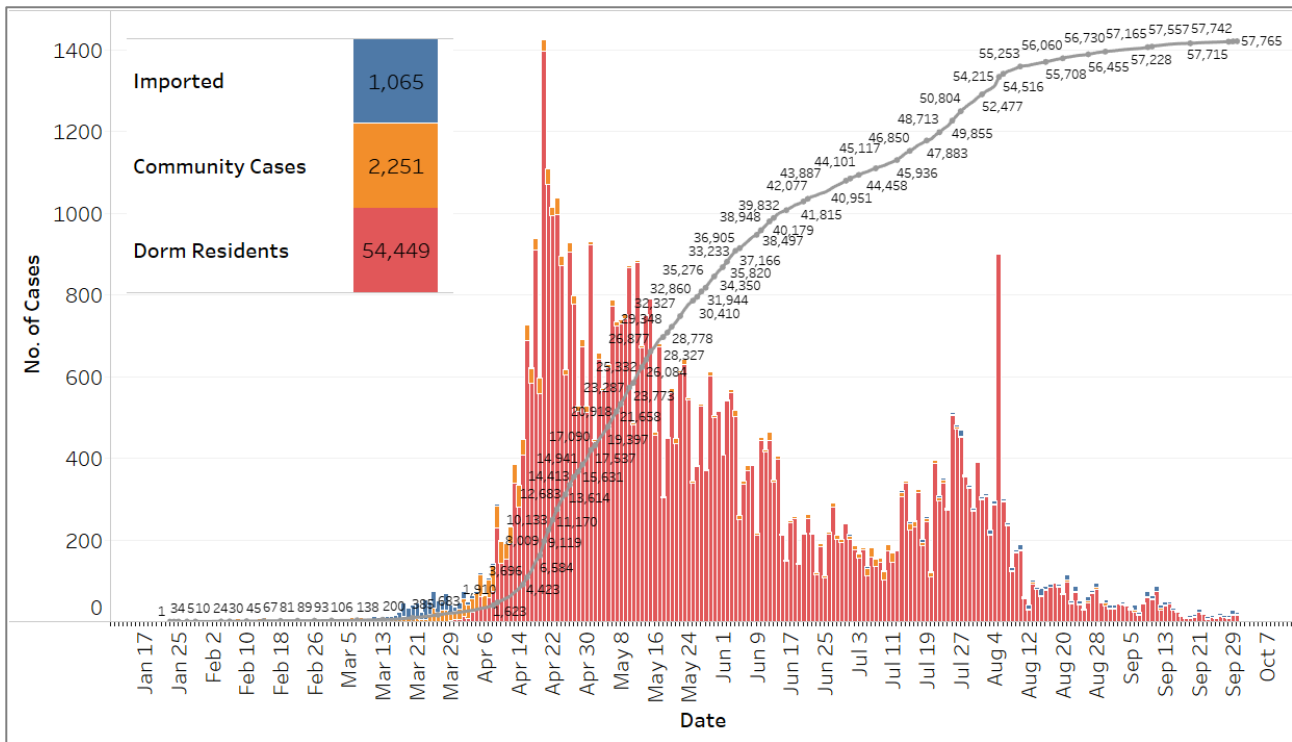


**30 September 2020 Daily Report on COVID-19****(1) Number of COVID-19 Cases****Figure 1.1:** Breakdown of New Confirmed Cases in the Past 14 Days

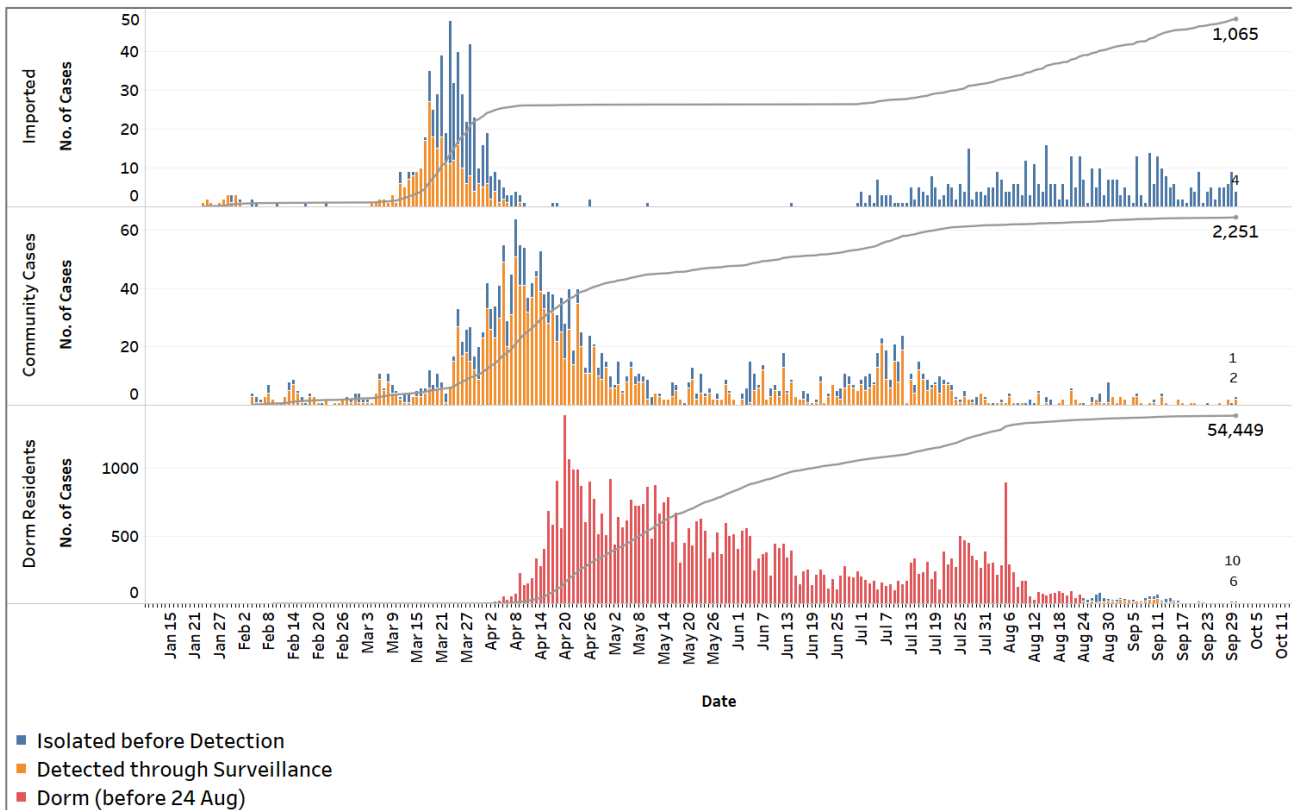
Press Release Date	Imported			Non-Imported Cases														All Cases
	Isolated	Not Isolated <sup>3</sup>	Sub-Total	Community Cases								Dorm Residents <sup>1,2</sup>						
				Isolated before Detection <sup>4</sup>				Detected through Surveillance <sup>5</sup>				Sub-Total	Incidence Rate <sup>6</sup> (per 100,000)	Isolated before Detection <sup>4</sup>	Detected through Surveillance <sup>5</sup>	No. of Cases	Incidence Rate <sup>6</sup> (per 100,000)	
				SC/PR	G or F	Visitor	Sub-Total	SC/PR	G or F	Visitor	Sub-Total							
Before 17-Sep	731	272	1,003	363	258	1	622	986	623	9	1,618	2,240	-	54,271		54,271	-	57,514
17-Sep	2	0	2	0	0	0	0	0	1	0	1	1	0.019	10	5	15	4.6	18
18-Sep	1	0	1	0	0	0	0	0	0	0	0	0	0	5	4	9	2.8	10
19-Sep	5	0	5	0	0	0	0	1	0	0	1	1	0.019	6	3	9	2.8	15
20-Sep	4	0	4	0	0	0	0	0	1	0	1	1	0.019	5	8	13	4.0	18
21-Sep	9	0	9	0	0	0	0	0	0	0	0	0	0	16	6	22	6.8	31
22-Sep	1	0	1	0	0	0	0	0	0	0	0	0	0	6	14	20	6.2	21
23-Sep	4	0	4	0	1	0	1	0	0	0	0	1	0.019	4	3	7	2.2	12
24-Sep	5	0	5	0	0	0	0	0	0	0	0	0	0	5	5	10	3.1	15
25-Sep	2	0	2	0	0	0	0	0	0	0	0	0	0	7	2	9	2.8	11
26-Sep	5	0	5	0	0	0	0	0	1	0	1	1	0.019	7	7	14	4.3	20
27-Sep	5	0	5	0	0	0	0	0	0	0	0	0	0	6	4	10	3.1	15
28-Sep	6	0	6	0	0	0	0	0	2	0	2	2	0.037	4	3	7	2.2	15
29-Sep	9	0	9	0	1	0	1	0	0	0	0	1	0.019	8	9	17	5.3	27
30-Sep	4	0	4	0	1	0	1	0	2	0	2	3	0.056	10	6	16	5.0	23
Total since start of outbreak	793	272	1,065	363	261	1	625	987	630	9	1,626	2,251	-	54,449		54,449	-	57,765
Population at risk												5,381,000				323,000		5,704,000
Prevalence												0.04%				16.86%		1.01%

<sup>1</sup> Includes PRs and visitors residing in dorms.<sup>2</sup> Breakdown of dorm cases into those detected through surveillance and those isolated before detection is not available before 24 Aug.<sup>3</sup> All of these cases were reported before early Apr, and constitute the first wave of imported cases.<sup>4</sup> Cases who were already quarantined and tested during quarantine to determine their status.<sup>5</sup> Cases who were identified through surveillance testing, such as the bi-weekly Rostered Routine Testing (RRT) of at-risk workers and testing of those with Acute Respiratory Illness (ARI) symptoms.<sup>6</sup> Incidence rates are rounded to two significant figures.

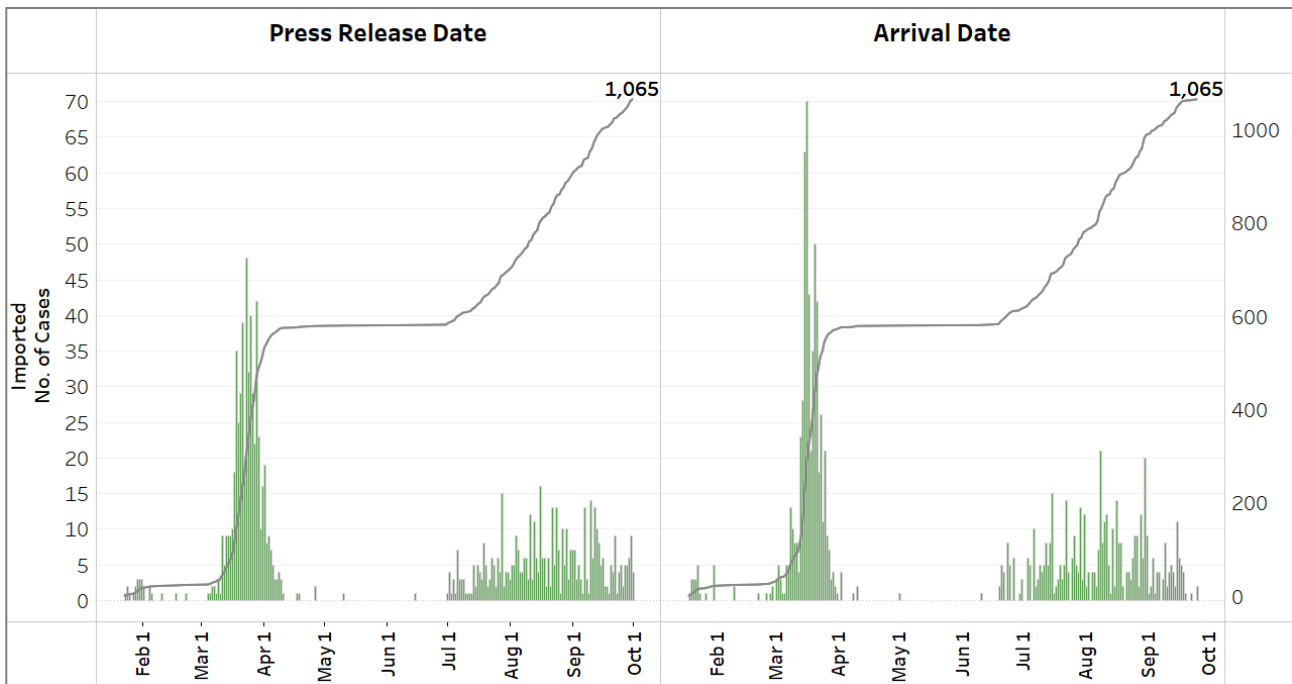
**Figure 1.2:** Epidemic Curve of the COVID-19 Outbreak by Press Release Date



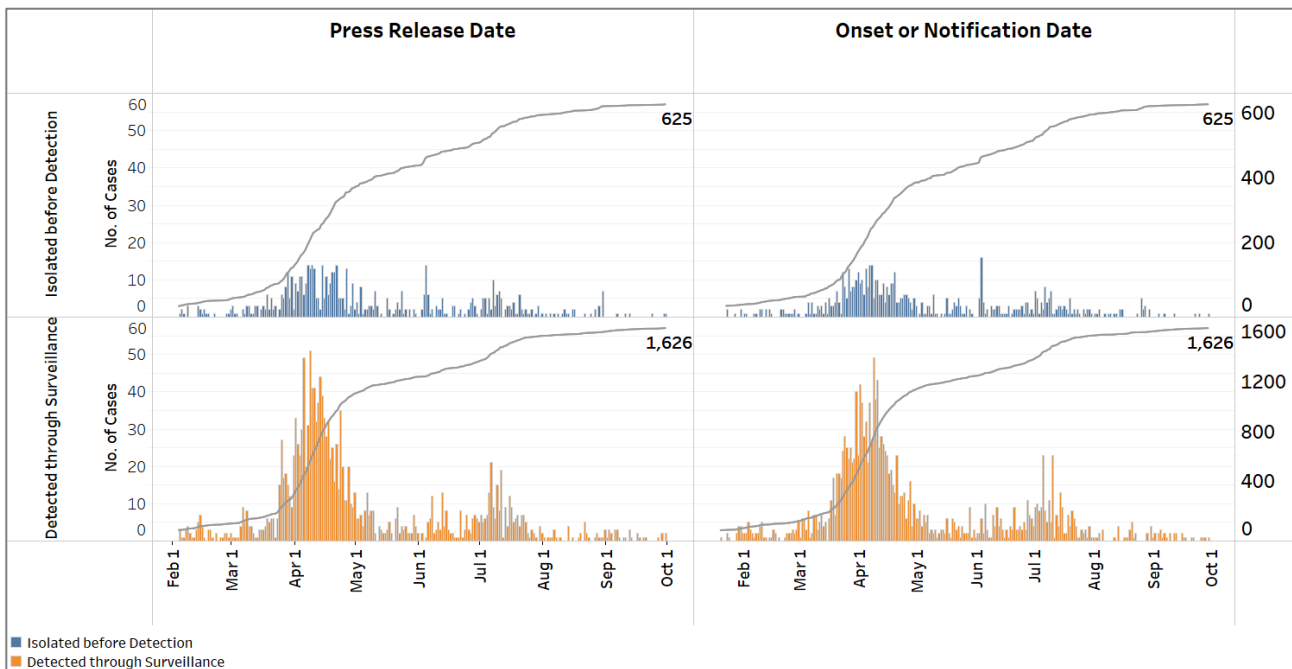
**Figure 1.3:** Epidemic Split Curve of the COVID-19 Outbreak by Press Release Date



**Figure 1.4:** Epidemic Curve of Imported Cases by Press Release Date (left panel) and Arrival Date (right panel)

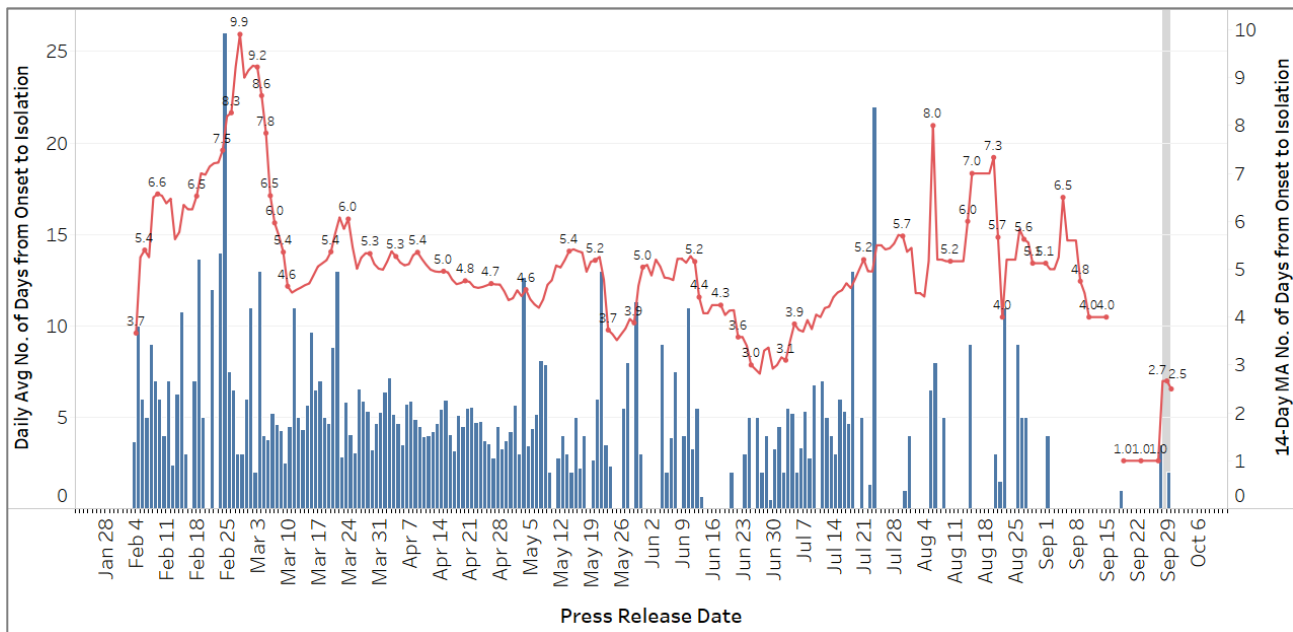


**Figure 1.5:** Epidemic Curve of Community Cases by Press Release Date (left panel) and by Symptom Onset or Notification Date<sup>7</sup> (right panel)



<sup>7</sup> Date of notification was used for cases that did not display any symptoms. The numbers with onset in the past few days may see an increase as more cases are notified.

**Figure 1.6:** Average Number of Days from Onset of Symptoms to Isolation (QO, hospital admission or notification to MOH) for Community Cases Detected through Surveillance in Each Day



*Line represents the 14-day moving average; Bar represents the daily average*<sup>8</sup>

<sup>8</sup> Area in grey demarcates data points for the past 3 days where some cases may still be pending epidemiological investigation. The bar graph shows the daily average number of days from symptoms onset to isolation, while the line graph shows the moving average for the past 14 days. Both graphs exclude cases with no onset date (asymptomatic) in the computation of the average. Community cases with symptoms who are isolated on the same day that symptoms occurred would have an isolation time of 0. There is a gap in the line graph from 16 to 18 Sep as there are no symptomatic cases in the preceding 14 days.

**(2) Number of COVID-19 Cases in Hospitals and Community Care Facilities**

**Figure 2.1:** Summary of Confirmed Cases by Status in the Past 14 Days

Press Release Date	Currently Admitted in Hospitals		In Care Facilities <sup>9</sup>	Total Recovered		Total Demised	Total
	ICU	General Wards		Completed Isolation	Discharged from Hospital		
17-Sep	0	43	423	54,634	2,405	27	57,532
18-Sep	0	38	407	54,658	2,413	27	57,543
19-Sep	0	27	362	54,720	2,422	27	57,558
20-Sep	0	30	338	54,756	2,425	27	57,576
21-Sep	0	36	302	54,817	2,424*	27	57,606
22-Sep	0	37	301	54,833	2,429	27	57,627
23-Sep	0	36	285	54,856	2,435	27	57,639
24-Sep	0	28	266	54,887	2,446	27	57,654
25-Sep	0	30 <sup>+</sup>	268	54,893	2,447 <sup>+</sup>	27	57,665
26-Sep	0	25	274	54,910	2,449	27	57,685
27-Sep	0	31	275	54,918	2,449	27	57,700
28-Sep	0	36	259	54,941	2,452	27	57,715
29-Sep	0	32	217	55,008	2,458	27	57,742
30-Sep	0	41	209	55,029	2,459	27	57,765

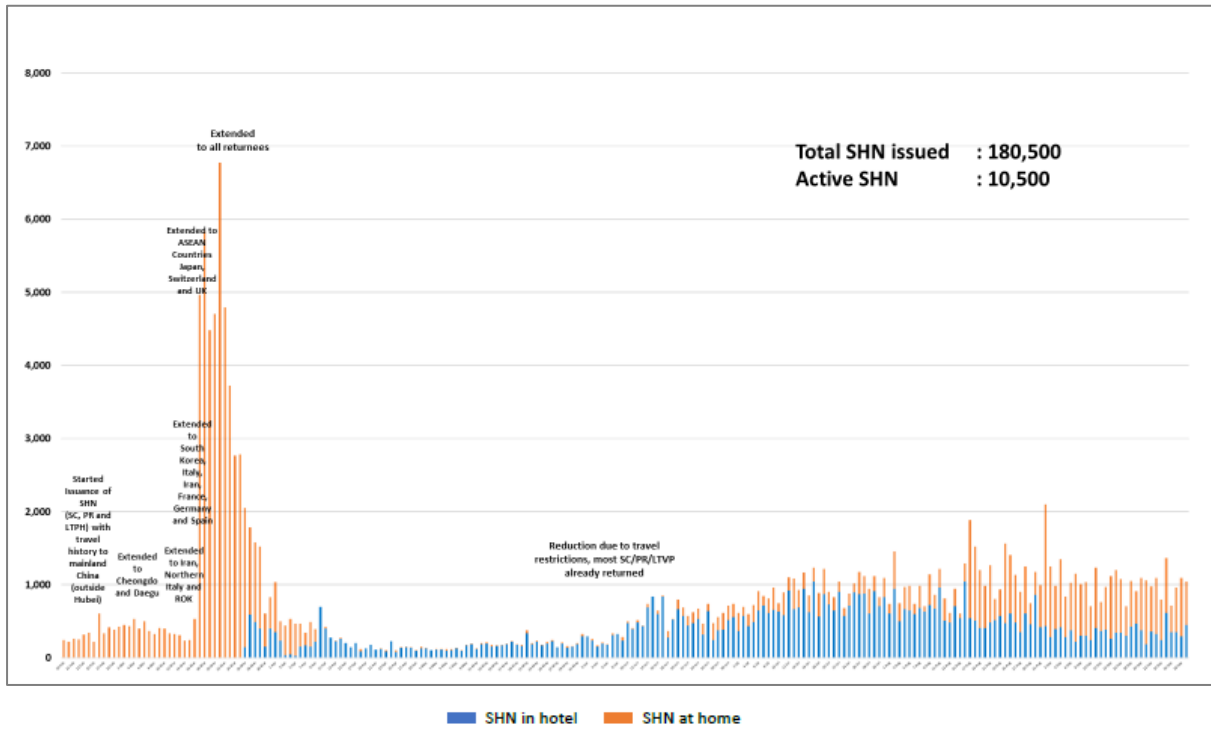
\* Case 57679 was expunged as it was reclassified as a non-Covid infection by the ID expert panel.

\* Case 57694 was reclassified from Discharged from Hospital to Admitted in GW

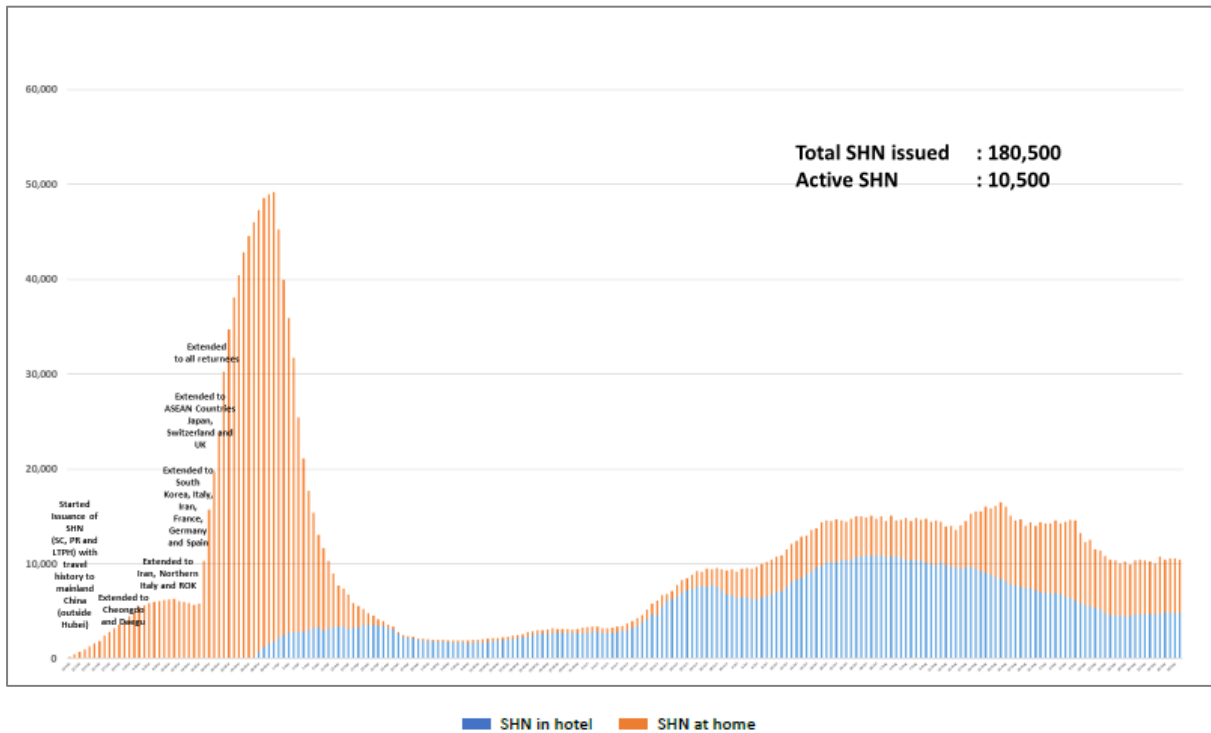
<sup>9</sup> Community Care Facilities (i.e. D'Resort, EXPO, Big Box), Private Hospitals (i.e. Concord International Hospital, Mt Elizabeth Hospital, Gleneagles Hospital, Mt Elizabeth Novena Hospital, Parkway East Hospital), Community Hospitals (i.e. Bright Vision Hospital) and other care facilities.

### (3) Number of Stay-Home-Notice (SHN) Issued

**Figure 3.1:** Daily Number of SHN issued

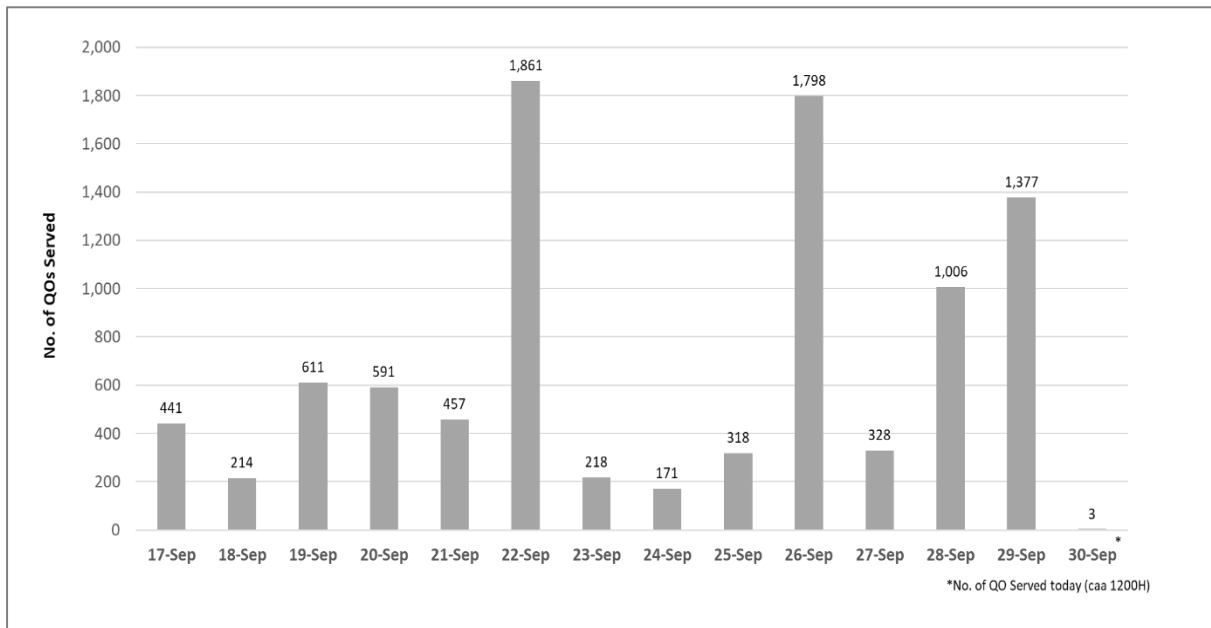


**Figure 3.2:** Active Stock Number of SHN (Home) and SHN (Hotel)



#### (4) Number of Quarantine Order (QO) Issued

**Figure 4.1:** Daily Number of QOs Issued



**Figure 4.2:** Active Number of Persons Under Quarantine (PUQs)

