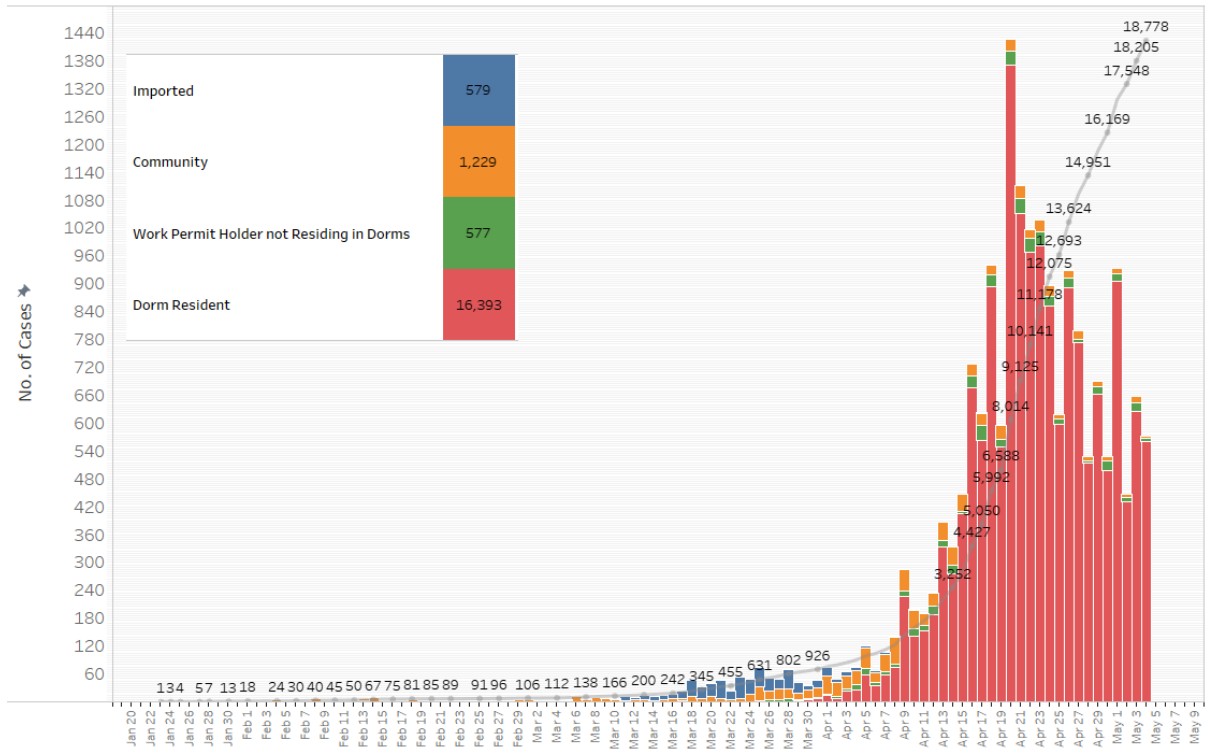


**4 May 2020 Daily Report on COVID-19****(1) Number of COVID-19 Cases****Figure 1.1:** Number of Cases Reported over the Past 14 Days

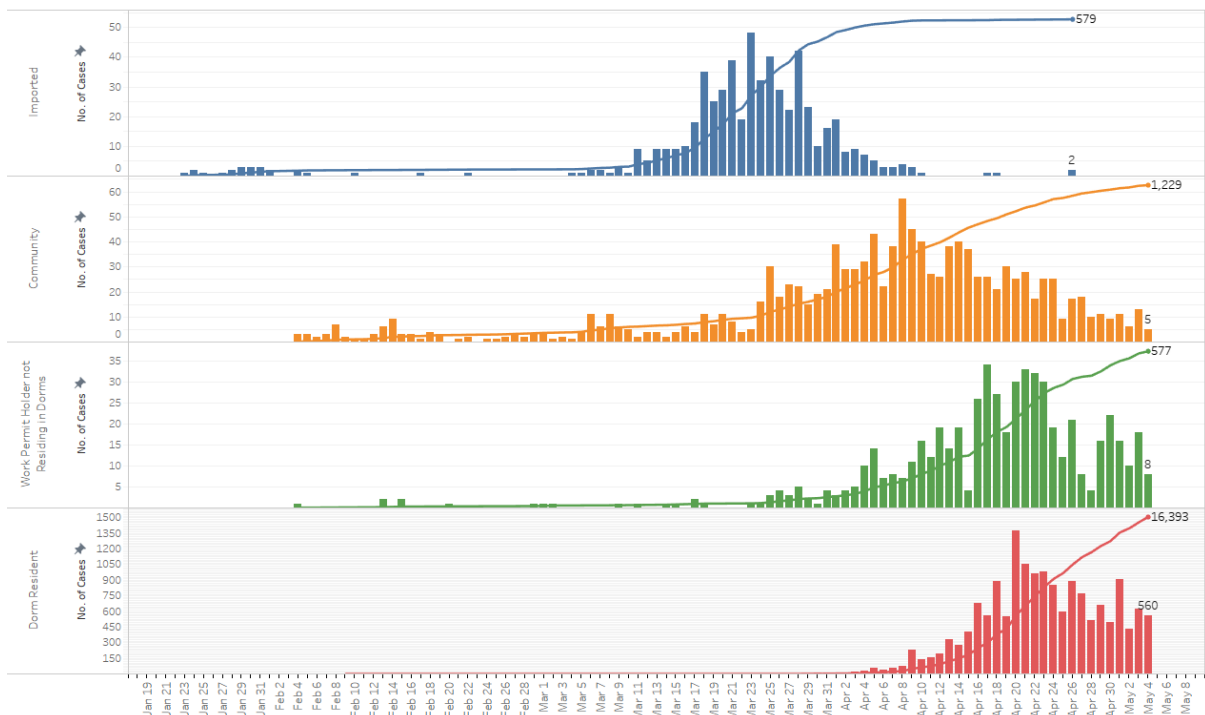
Press Release Date	Imported	Non-Imported Cases																Total Cases
		Community Cases (residents & pass holders excluding work permit holders and dorm residents)								Work permit holders not residing in dorms				Dorm Residents				
		Linked Cases				Unlinked Cases <sup>1</sup>				Sub-Total	Incidence Rate (per 100,000)	Linked Cases	Unlinked Cases <sup>2</sup>	Sub-Total	Incidence Rate (per 100,000)	No. of Cases	Incidence Rate (per 100,000)	
		SC/SPR	G or F	Visitor	Sub-Total	SC/SPR	G or F	Visitor	Sub-Total									
Before 21-Apr	577	522	74	3	599	375	47	4	426	1,025	-	233	95	328	-	6,084	-	8,014
21-Apr	0	2	5	0	7	18	3	0	21	28	0.59	24	9	33	5.0	1,050	330	1,111
22-Apr	0	3	1	0	4	12	1	0	13	17	0.36	27	5	32	4.8	967	300	1,016
23-Apr	0	4	3	0	7	18	0	0	18	25	0.53	24	6	30	4.5	982	300	1,037
24-Apr	0	2	8	0	10	11	4	0	15	25	0.53	12	7	19	2.9	853	260	897
25-Apr	0	4	1	0	5	3	1	0	4	9	0.19	7	5	12	1.8	597	180	618
26-Apr	2	7	2	0	9	6	2	0	8	17	0.36	12	9	21	3.2	891	280	931
27-Apr	0	12	2	0	14	2	2	0	4	18	0.38	3	5	8	1.2	773	240	799
28-Apr	0	2	2	1	5	5	0	0	5	10	0.21	1	3	4	0.60	514	160	528
29-Apr	0	3	1	0	4	3	4	0	7	11	0.23	8	8	16	2.4	663	210	690
30-Apr	0	1	1	0	2	5	2	0	7	9	0.19	19	3	22	3.3	497	150	528
1-May	0	1	4	0	5	4	2	0	6	11	0.23	11	5	16	2.4	905	280	932
2-May	0	2	2	0	4	2	0	0	2	6	0.13	6	4	10	1.5	431	130	447
3-May	0	8	1	0	9	2	2	0	4	13	0.28	16	2	18	2.7	626	190	657
4-May	0	2	0	0	2	3	0	0	3	5	0.11	4	4	8	1.2	560	170	573
Total since start of outbreak	579	575	107	4	686	469	70	4	543	1,229	-	407	170	577	-	16,393	-	18,778
Population at risk <sup>3</sup>										4,717,000				664,000		323,000		5,704,000
Prevalence										0.03%				0.09%		5.08%		0.33%

<sup>1</sup> Includes cases pending epi-investigation.<sup>2</sup> Includes cases pending epi-investigation.<sup>3</sup> Population at risk for community cases includes SC/PRs and other types of passes holders not residing in dormitories. Source: MOM and Singstat.

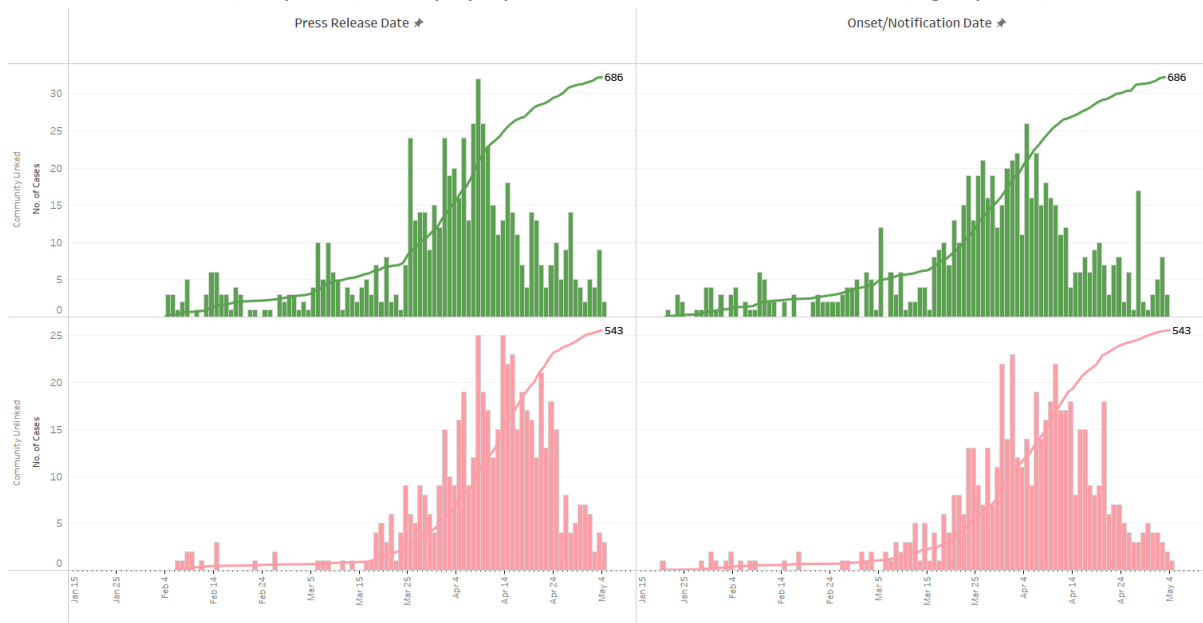
**Figure 1.2:** Epidemic Curve of the COVID-19 Outbreak by Press Release Date



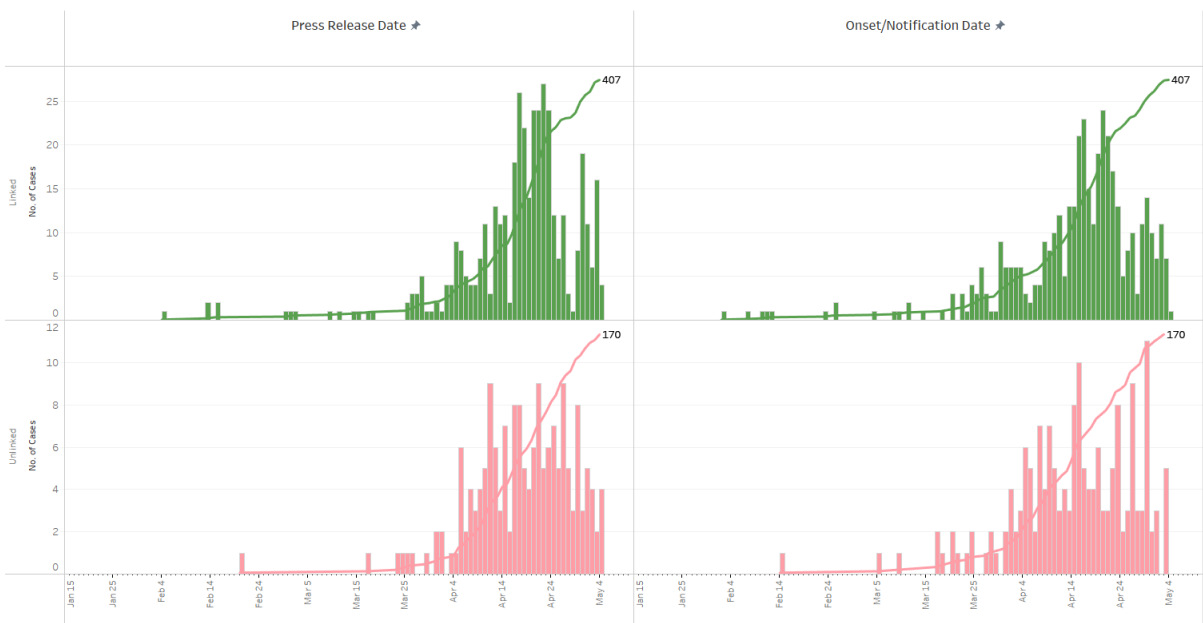
**Figure 1.3:** Epidemic Curve of the COVID-19 Outbreak by Press Release Date



**Figure 1.4:** Epidemic Curve of Linked and Unlinked Cases among the Community by Press Release Date (left panel) and by Symptom Onset or Notification Date<sup>4</sup> (right panel)



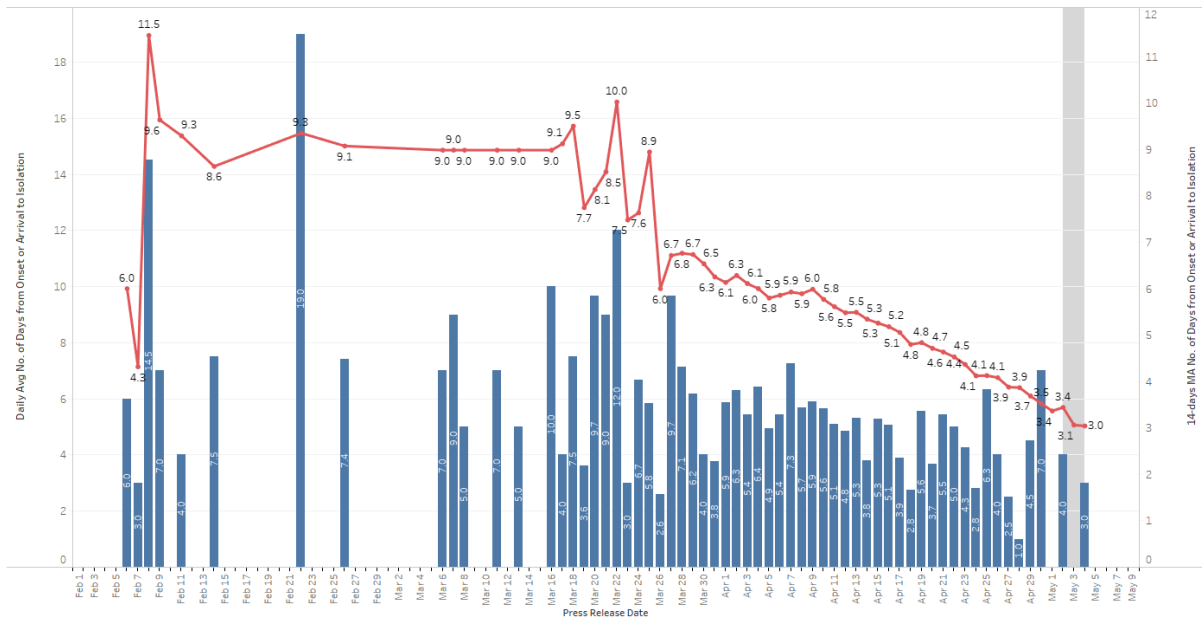
**Figure 1.5:** Epidemic Curve of Linked and Unlinked Cases among Work Permit Holders not Residing in Dorms by Press Release Date (left panel) and by Symptom Onset or Notification Date<sup>5</sup> (right panel)



<sup>4</sup> Date of notification was used for cases that did not display any symptoms. The numbers with onset in the past few days may see an increase as more cases are notified.

<sup>5</sup> Date of notification was used for cases that did not display any symptoms. The numbers with onset in the past few days may see an increase as more cases are notified.

**Figure 1.6:** Average Number of Days from Onset of Symptoms to Isolation (QO, MOH contact, notification or admission) for Community Unlinked Cases in Each Day<sup>6</sup>



Line represents the 14-day moving average, Bar represents the daily average.

<sup>6</sup> Area in grey demarcates the data points for the past 3 days where some cases are still pending investigation. The bar chart shows the daily average number of days from onset date to isolation, and it excludes cases with missing onset dates. The line chart shows the moving average for the past 14 days, and it takes into account cases with missing onset date. For these cases, onset date was substituted using notification date. Based on this methodology, recent data points on the line chart will tend to underestimate the average number of days to isolation for the past 14 days.

**(2) Number of COVID-19 Cases in Hospitals and Community Care Facilities****Figure 2.1:** Summary of Confirmed Cases by Status in the Past 14 Days

Press Release Date	Currently Admitted in Hospitals		In Care Facilities <sup>7</sup>	Recovered		Demised	Total
	ICU	General Wards		Completed Isolation	Discharged from Hospital		
21-Apr	27	1,381	6,881	371	454	11	<b>9,125</b>
22-Apr	25	1,571	7,651	413	469	12	<b>10,141</b>
23-Apr	26	1,342	8,880	434	484	12	<b>11,178</b>
24-Apr	24	1,205	9,878	449	507	12	<b>12,075</b>
25-Apr	24	1,190	10,465	475	527	12	<b>12,693</b>
26-Apr	22	1,289	11,241	514	546	12	<b>13,624</b>
27-Apr	20	1,431	11,863	532	563	14	<b>14,423</b>
28-Apr	21	1,668	12,120	551	577	14	<b>14,951</b>
29-Apr	22	1,692	12,725	594	594	14	<b>15,641</b>
30-Apr	21	1,687	13,202	624	620	15	<b>16,169</b>
1-May	23	1,741	14,053	630	638	16	<b>17,101</b>
2-May	24	1,686	14,474	685	662	17	<b>17,548</b>
3-May	22	1,608	15,149	722	686	18	<b>18,205</b>
4-May	25	1,466	15,812	744	713	18	<b>18,778</b>

<sup>7</sup> Community Care Facilities (i.e. D'Resort, EXPO, Changi Exhibition Centre), Private Hospitals (i.e. Concord International Hospital, Mt Elizabeth Hospital, Gleneagles Hospital, Mt Alvernia Hospital, Mt Elizabeth Novena Hospital, Parkway East Hospital, Farrer Park Hospital), Community Hospitals (i.e. Bright Vision Hospital, St. Andrew's Community Hospital, Yishun Community Hospital, Jurong Community Hospital, Sengkang Community Hospital) and other care facilities.

(3) Number of Stay-Home-Notice (SHN) Issued

Figure 3.1: Daily Number of SHN issued

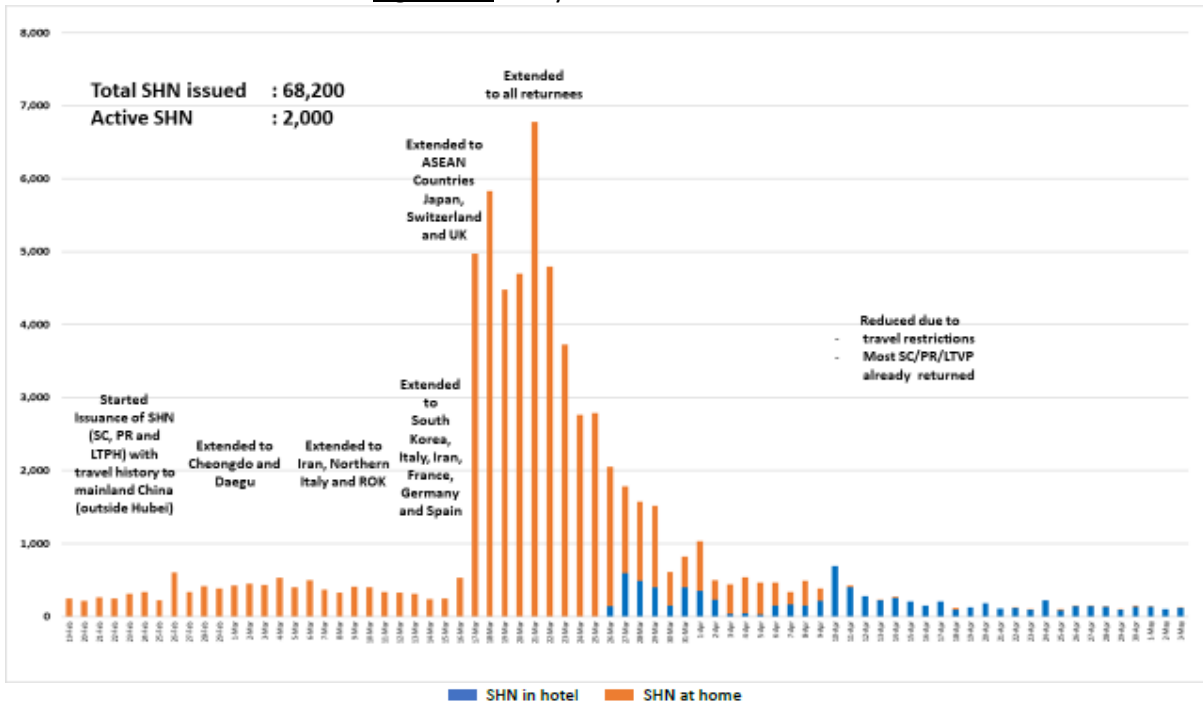
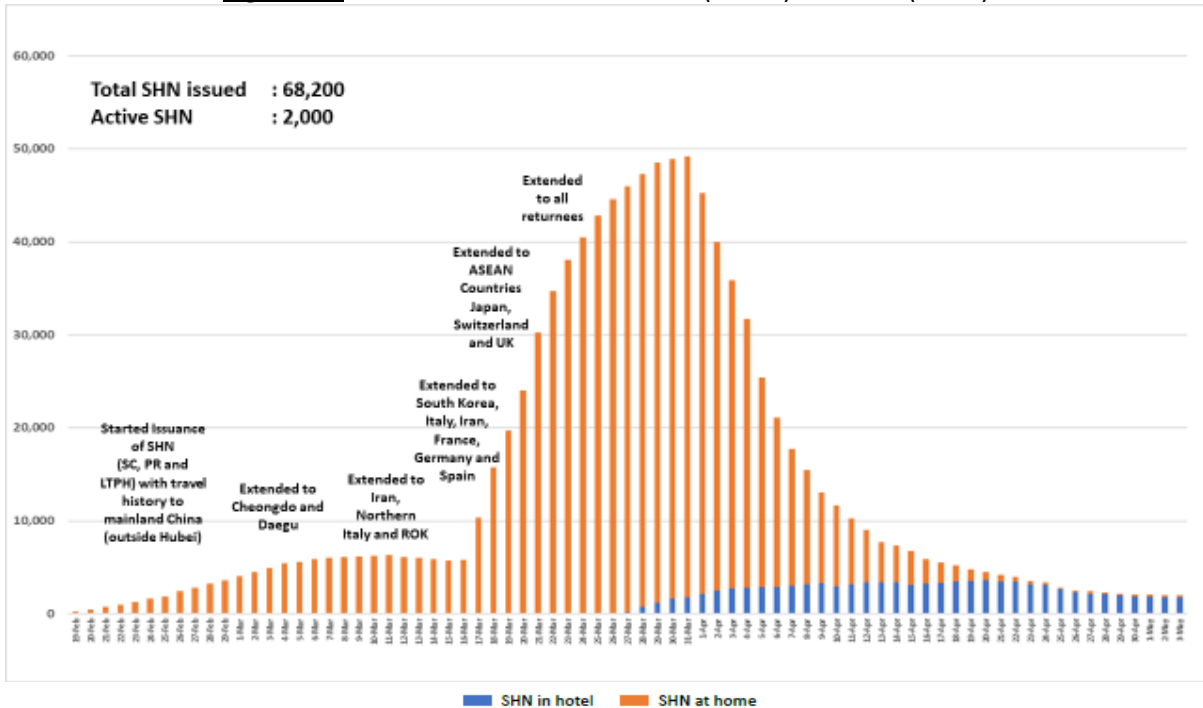
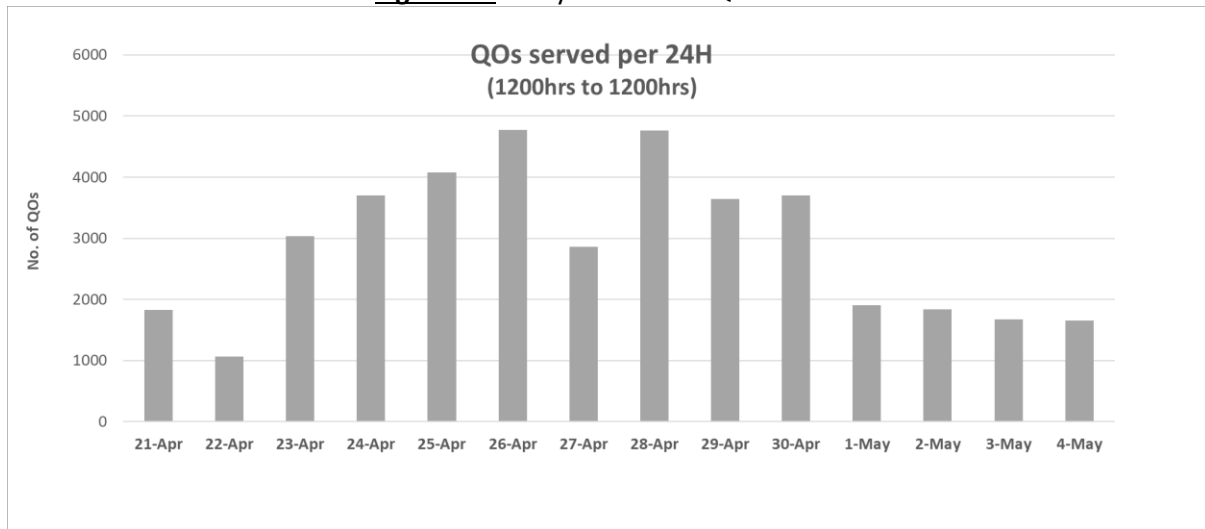


Figure 3.2: Active Stock Number of SHN (Home) and SHN (Hotel)



**(4) Number of Quarantine Order (QO) Issued**

**Figure 4.1:** Daily Number of QOs Issued



**Figure 4.2:** Active Number of Persons Under Quarantine (PUQs)

