

**20 July 2020 Daily Report on COVID-19**

**(1) Number of COVID-19 Cases**

**Figure 1.1:** Number of Cases Reported over the Past 14 Days

Press Release Date	Imported	Non-Imported Cases														All Cases
		Community Cases <sup>1</sup>										Dorm Residents				
		Linked Cases					Unlinked Cases <sup>2</sup>					Sub-Total	Incidence Rate <sup>3</sup> (per 100,000)	No. of Cases	Incidence Rate <sup>3</sup> (per 100,000)	
SC/PR	G or F (work permit)	G or F (other pass types) <sup>4</sup>	Visitor	Sub-Total	SC/PR	G or F (work permit)	G or F (other pass types) <sup>4</sup>	Visitor	Sub-Total							
Before 7-Jul	601	787	312	162	4	1,265	467	144	81	5	697	1,962	-	42,420	-	44,983
7-Jul	3	8	3	0	0	11	3	3	2	0	8	19	0.35	134	41	156
8-Jul	3	2	1	0	0	3	2	2	2	0	6	9	0.17	146	45	158
9-Jul	1	0	8	1	0	9	4	6	2	0	12	21	0.39	103	32	125
10-Jul	1	2	4	1	0	7	4	1	3	0	8	15	0.28	174	54	190
11-Jul	1	6	3	2	0	11	1	8	4	0	13	24	0.45	145	45	170
12-Jul	1	0	0	0	0	0	1	0	0	0	1	1	0.019	176	54	178
13-Jul	5	2	0	2	0	4	0	3	4	0	7	11	0.20	306	95	322
14-Jul	2	1	1	1	0	3	0	2	2	0	4	7	0.13	338	100	347
15-Jul	5	0	4	1	0	5	0	8	2	0	10	15	0.28	229	71	249
16-Jul	4	1	0	3	0	4	1	2	4	0	7	11	0.20	233	72	248
17-Jul	3	4	1	2	0	7	2	0	0	0	2	9	0.17	315	98	327
18-Jul	8	2	0	1	0	3	3	1	0	0	4	7	0.13	187	58	202
19-Jul	5	1	1	0	0	2	1	4	1	0	6	8	0.15	244	76	257
20-Jul	2	2	4	0	0	6	3	1	1	0	5	11	0.20	110	34	123
Total since start of outbreak	645	818	342	176	4	1,340	492	185	108	5	790	2,130	-	45,260	-	48,035
Population at risk <sup>5</sup>												5,381,000		323,000		5,704,000
Prevalence												0.04%		14.01%		0.84%

<sup>1</sup> Previously we had tracked the work permit holders living outside dormitories as a separate category, and put a large number of these workers on Stay Home Notices (SHN). The SHN for these workers has since expired. Hence we have now updated the definition of “Cases in the Community” to include all cases (including amongst work permit holders) that are detected outside of the dormitories.

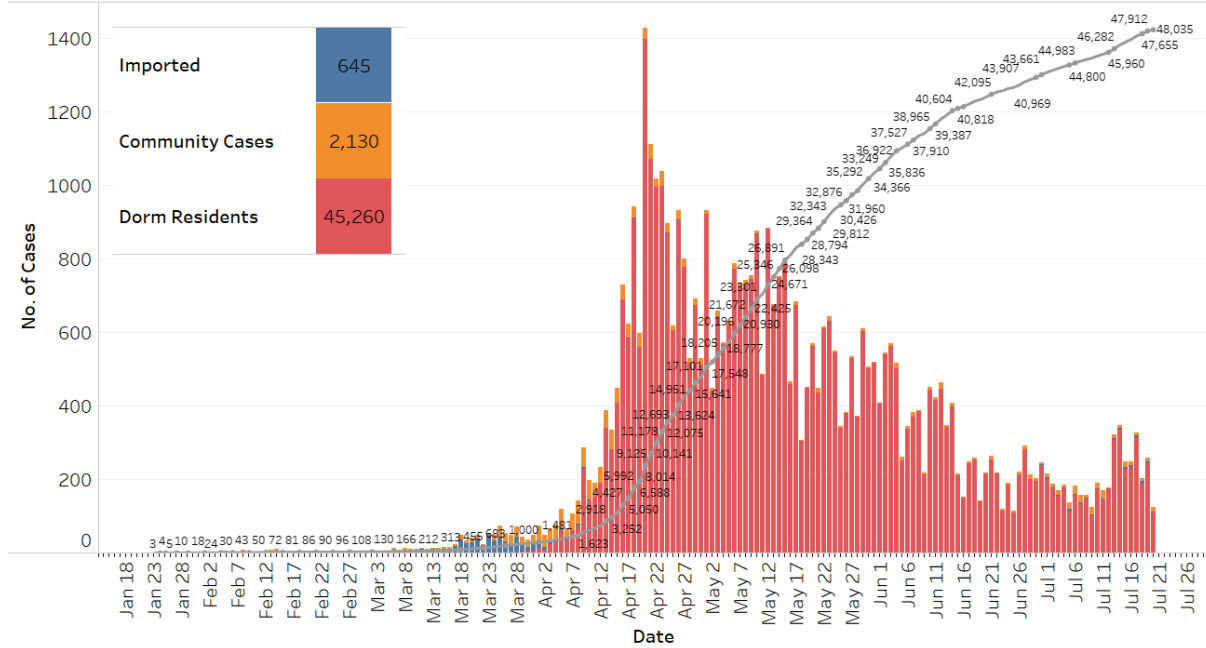
<sup>2</sup> Includes cases pending epi-investigation.

<sup>3</sup> Incidence rates are rounded to two significant figures.

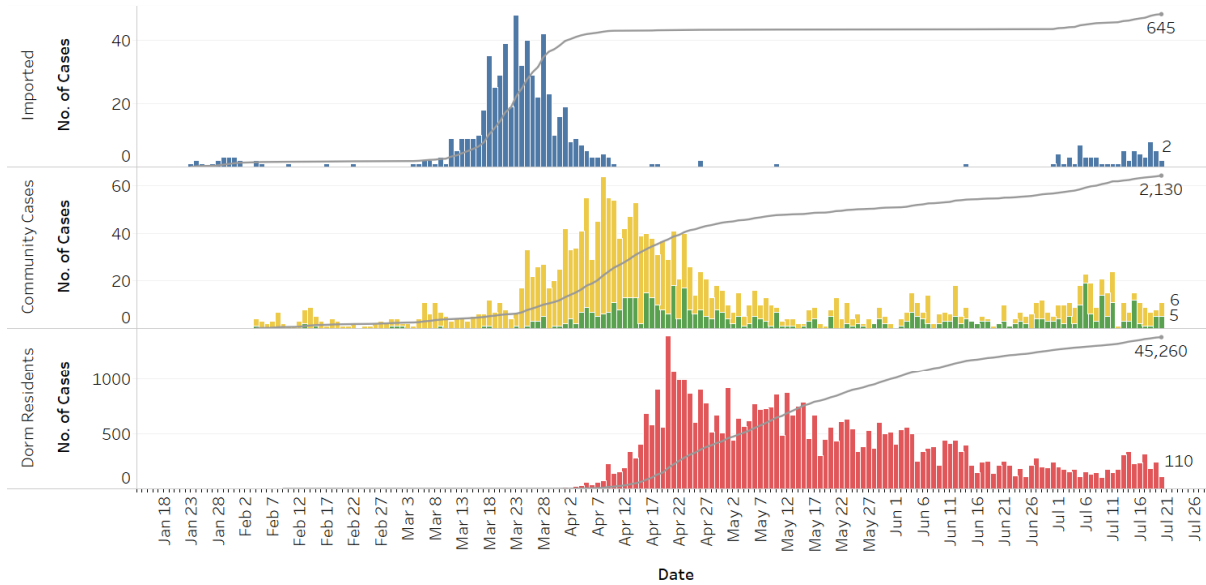
<sup>4</sup> Includes Training Work Permit (TWP) holders.

<sup>5</sup> Population at risk for community cases includes SC/PRs and work pass holders not residing in dormitories. Source: MOM and Singstat.

**Figure 1.2:** Epidemic Curve of the COVID-19 Outbreak by Press Release Date

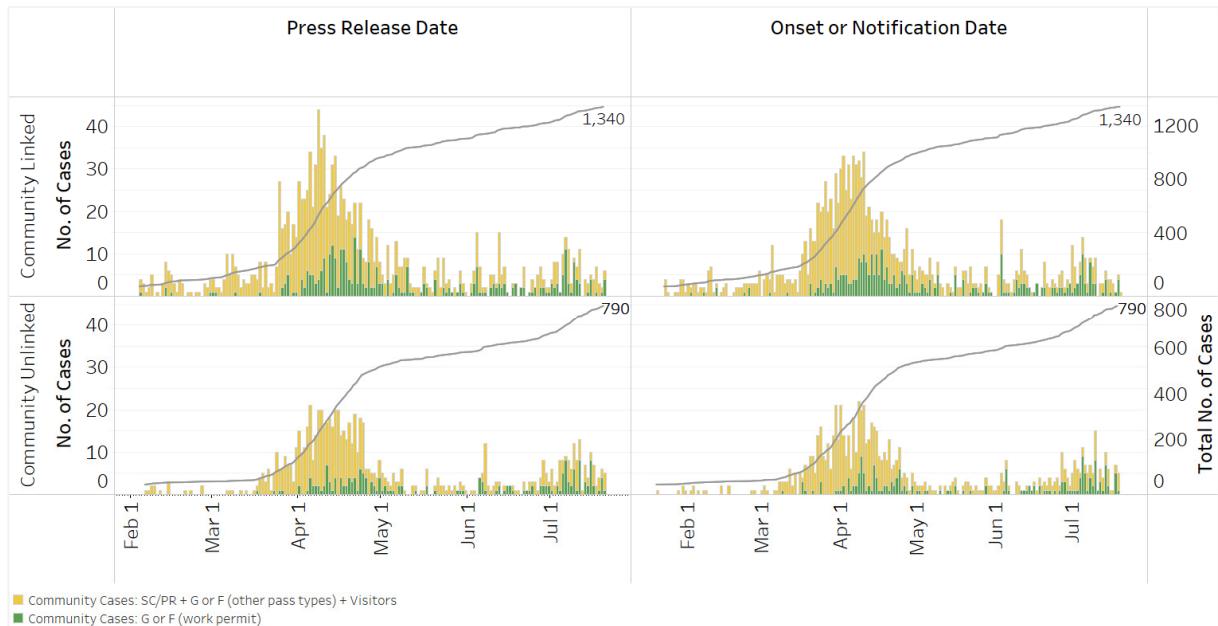


**Figure 1.3:** Epidemic Curve of the COVID-19 Outbreak by Press Release Date

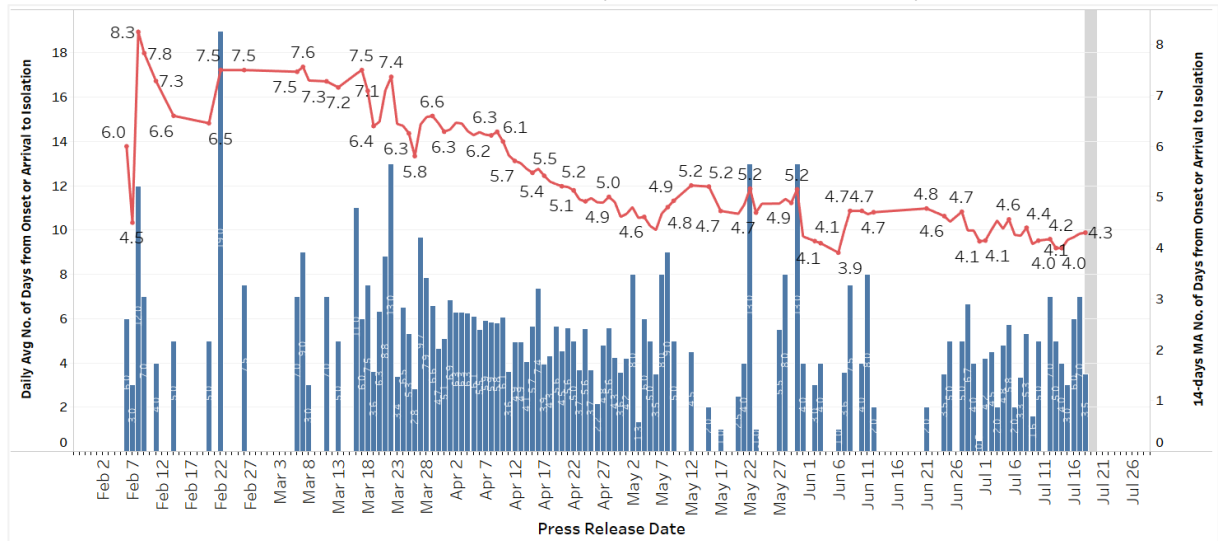


- COVID-19 Cases**
- Imported
  - Community Cases: SC/PR + G or F (other pass types) + Visitors
  - Community Cases: G or F (work permit)
  - Dorm Residents

**Figure 1.4:** Epidemic Curve of Linked and Unlinked Cases among the Community by Press Release Date (left panel) and by Symptom Onset or Notification Date<sup>6</sup> (right panel)



**Figure 1.5:** Average Number of Days from Onset of Symptoms to Isolation (QO, MOH contact, notification or admission) for Community Unlinked Cases in Each Day<sup>7</sup>



Line represents the 14-day moving average; Bar represents the daily average<sup>8</sup>

<sup>6</sup> Date of notification was used for cases that did not display any symptoms. The numbers with onset in the past few days may see an increase as more cases are notified.

<sup>7</sup> Area in grey demarcates the data points for the past 3 days where some cases are still pending investigation. The bar chart shows the daily average number of days from onset date to isolation, while the line chart shows the moving average for the past 14 days. Both charts exclude cases with missing onset dates in the computation of the average.

<sup>8</sup> Asymptomatic community unlinked cases are not reflected in this chart. Community unlinked cases with symptoms who are isolated on the same day that symptoms occurred would have an isolation time of 0.

**(2) Number of COVID-19 Cases in Hospitals and Community Care Facilities****Figure 2.1:** Summary of Confirmed Cases by Status in the Past 14 Days

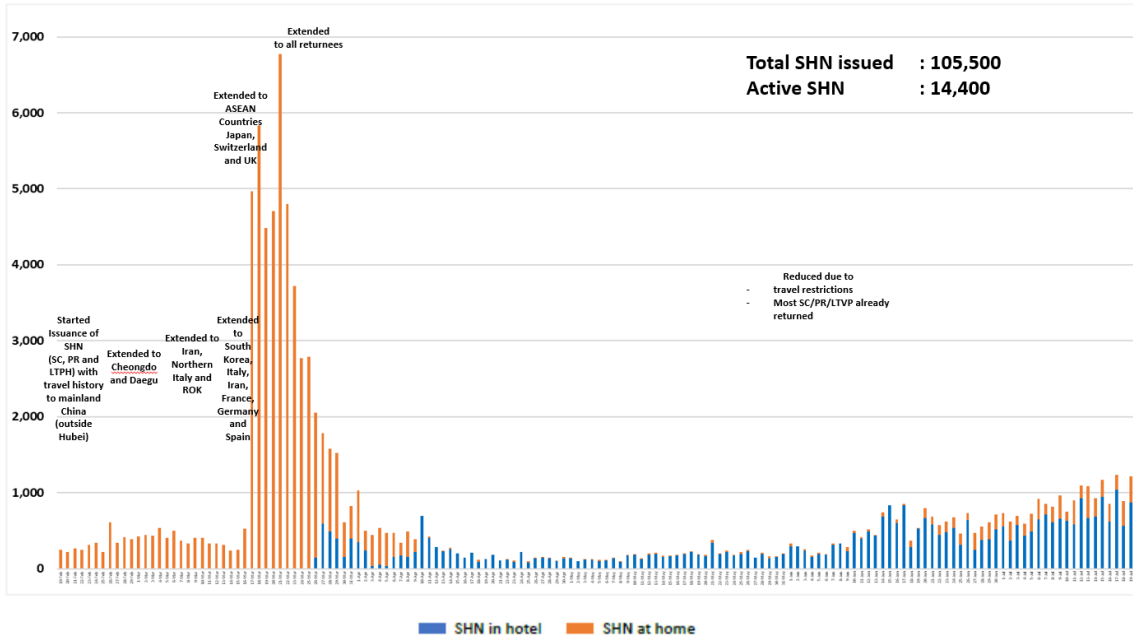
Press Release Date	Currently Admitted in Hospitals		In Care Facilities <sup>9</sup>	Total Recovered		Total Demised	Total
	ICU	General Wards		Completed Isolation	Discharged from Hospital		
7-Jul	1	218	3,893	39,171	1,831	26	<b>45,140</b>
8-Jul	1	213*	3,734	39,482	1,841	26	<b>45,297*</b>
9-Jul	1	196	3,554	39,793	1,852	26	<b>45,422</b>
10-Jul	1	202	3,603*	39,925	1,855	26	<b>45,612*</b>
11-Jul	1	191	3,538	40,151	1,875	26	<b>45,782</b>
12-Jul	1	180	3,468	40,401	1,884	26	<b>45,960</b>
13-Jul	1	165	3,549	40,653	1,888	26	<b>46,282</b>
14-Jul	0	161	3,704	40,842	1,895	27	<b>46,629</b>
15-Jul	0	159	3,704	41,081	1,907	27	<b>46,878</b>
16-Jul	0	146	3,697	41,339	1,917	27	<b>47,126</b>
17-Jul	0	165	3,684	41,654	1,923	27	<b>47,453</b>
18-Jul	0	169	3,626	41,906	1,927	27	<b>47,655</b>
19-Jul	0	181	3,618	42,156	1,930	27	<b>47,912</b>
20-Jul	0	183	3,454	42,436	1,935	27	<b>48,035</b>

\* 1 case on each day were removed after further investigations revealed that they did not fulfil the confirmed case definition.

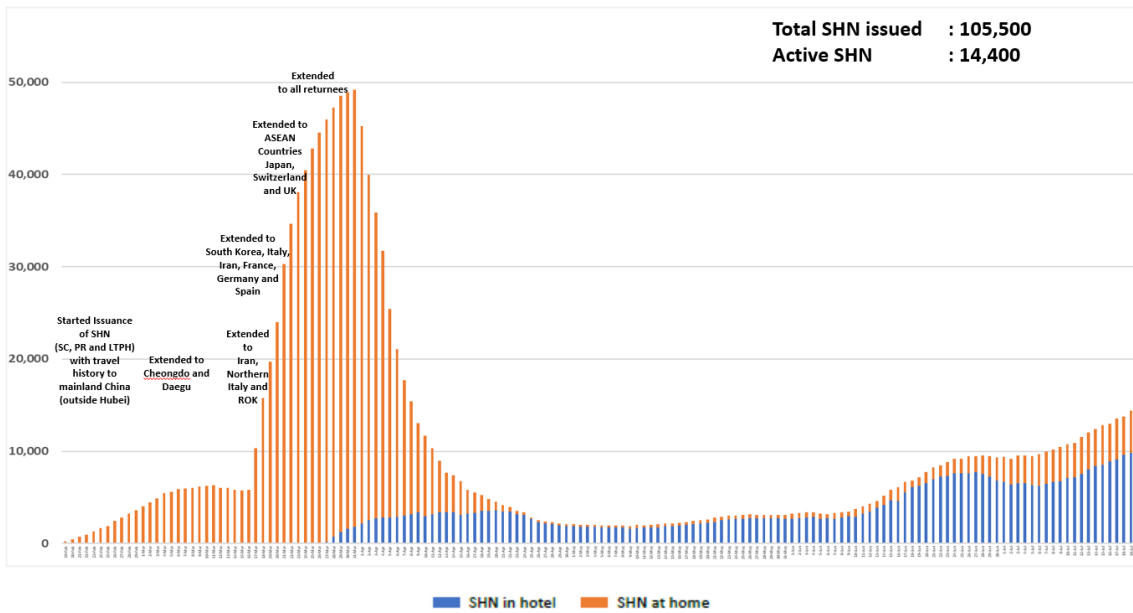
<sup>9</sup> Community Care Facilities (i.e. D'Resort, EXPO, Changi Exhibition Centre, Big Box), Private Hospitals (i.e. Concord International Hospital, Mt Elizabeth Hospital, Gleneagles Hospital, Mt Elizabeth Novena Hospital, Parkway East Hospital), Community Hospitals (i.e. Bright Vision Hospital, St. Andrew's Community Hospital, Jurong Community Hospital) and other care facilities.

### (3) Number of Stay-Home-Notice (SHN) Issued

**Figure 3.1:** Daily Number of SHN issued

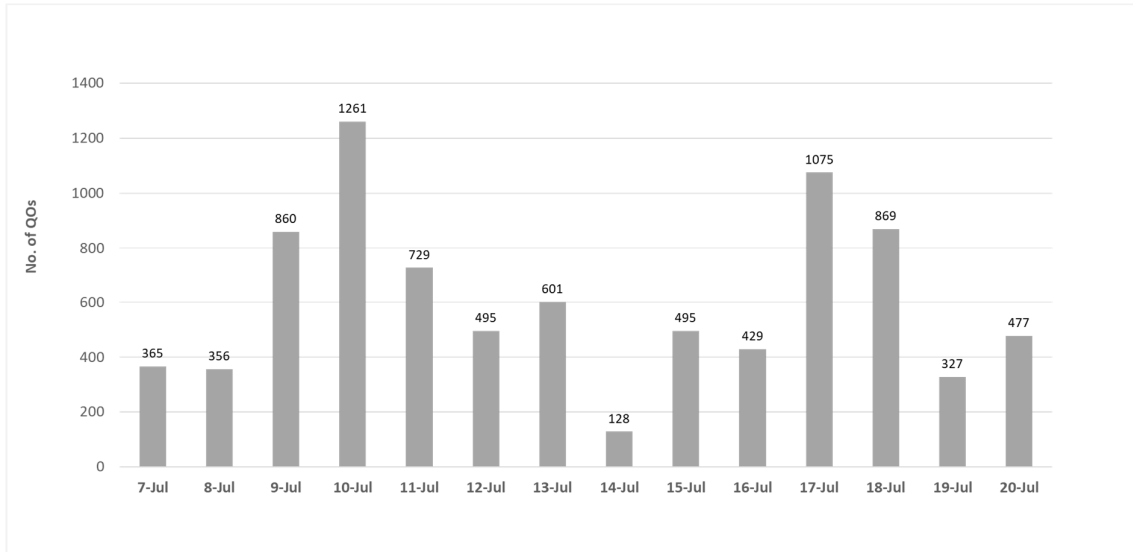


**Figure 3.2:** Active Stock Number of SHN (Home) and SHN (Hotel)



**(4) Number of Quarantine Order (QO) Issued**

**Figure 4.1:** Daily Number of QOs Issued



**Figure 4.2:** Active Number of Persons Under Quarantine (PUQs)

