



WEEKLY INFECTIOUS DISEASE BULLETIN  
EPIDEMIOLOGICAL WEEK 1 31 Dec - 6 Jan 2018

	E Week 1			Cumulative first 1 Weeks		
	2018*	2017	Median 2013 -2017	2018	2017	Median 2013 -2017
<b>FOOD/WATER-BORNE DISEASES</b>						
Acute Hepatitis A	1	2	1	1	2	1
Acute Hepatitis E	0	3	2	0	3	2
Campylobacteriosis	12	7	12	12	7	12
Cholera	0	0	0	0	0	0
Paratyphoid	1	3	1	1	3	1
Poliomyelitis	0	0	0	0	0	0
Salmonellosis	30	48	44	30	48	44
Typhoid	1	3	1	1	3	1
<b>VECTOR-BORNE DISEASES</b>						
Chikungunya Fever	0	0	1	0	0	1
Dengue Fever	83	70	256	83	70	256
Dengue Haemorrhagic Fever	0	0	1	0	0	1
Japanese Encephalitis <sup>^</sup>	0	0	NA	0	0	NA
Leptospirosis <sup>^</sup>	1	2	NA	1	2	NA
Malaria	2	0	1	2	0	1
Murine Typhus <sup>^</sup>	0	0	NA	0	0	NA
Nipah virus infection	0	0	0	0	0	0
Plague	0	0	0	0	0	0
Yellow Fever	0	0	0	0	0	0
Zika Virus Infection	0	0	NA	0	0	NA
<b>AIR/DROPLET-BORNE DISEASES</b>						
Avian Influenza	0	0	NA	0	0	NA
Diphtheria	0	0	0	0	0	0
Ebola Virus Disease	0	0	NA	0	0	NA
<i>Haemophilus influenzae</i> type b	0	1	0	0	1	0
Hand, Foot And Mouth Disease	326	501	417	326	501	417
Legionellosis	0	0	0	0	0	0
Measles	1	3	0	1	3	0
Melioidosis	1	2	2	1	2	2
Meningococcal Disease	0	0	0	0	0	0
Mumps	6	6	8	6	6	8
Pertussis	2	1	1	2	1	1
Pneumococcal Disease (invasive)	1	1	3	1	1	3
Rubella	0	0	0	0	0	0
Severe acute respiratory syndrome	0	0	0	0	0	0
Tetanus <sup>^</sup>	0	0	0	0	0	0
<b>OTHER DISEASES</b>						
Acute hepatitis B	1	2	0	1	2	0
Acute hepatitis C	0	1	1	0	1	1
Botulism <sup>^</sup>	0	0	NA	0	0	NA
<b>MERS-CoV</b>						
Suspect cases tested	2	NA	NA	44	41	NA
Other patients tested	1	NA	NA	18	31	NA
<b>POLYCLINIC ATTENDANCES - AVERAGE DAILY NUMBER</b>						
Acute upper respiratory infections	3158	2721	2766			NA
Acute conjunctivitis	103	106	106			NA
Acute Diarrhoea	580	518	509			NA
Chickenpox	24	20	NA			NA
<b>HIV/STI/TB NOTIFICATIONS</b>						
	2017	Dec		Cumulative 2017		
HIV/AIDS		25		399		
Legally Notifiable STIs**		670		8399		
Tuberculosis		135		1560		

\* Preliminary figures, subject to revision when more information is available.

\*\* *Wef Jan 2010, reporting has changed from all types of STIs to legally notifiable STIs, which comprise gonorrhoea, non-gonococcal urethritis, syphilis (congenital, infectious, non-infectious), chlamydia and genital herpes (first episode and recurrent).*

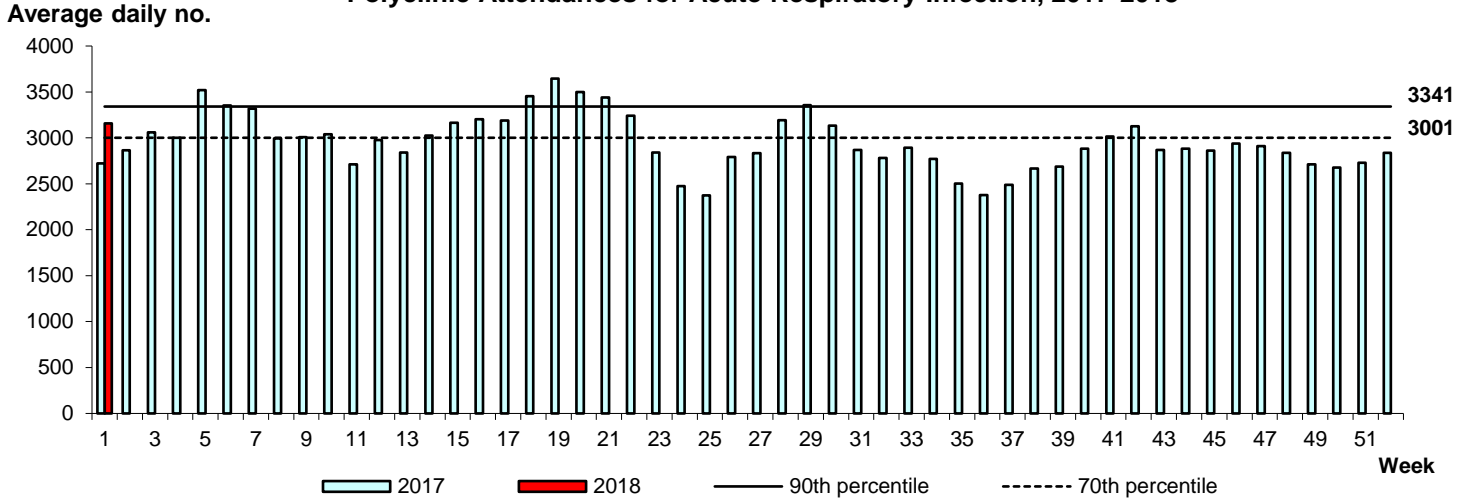
<sup>^</sup> Added to the list of notifiable diseases as of 28 Sep 2016

## Influenza Situation in Singapore 2018

Influenza indicators for E-week 1 (31 Dec 2017- 6 Jan 2018) are as follows:

The average daily number of patients seeking treatment in the polyclinics for ARI increased from 2,836 (over 4.5 working days) in E-week 52 of 2017 to 3,158 (over 4.5 working days) in E-week 1 of 2018.

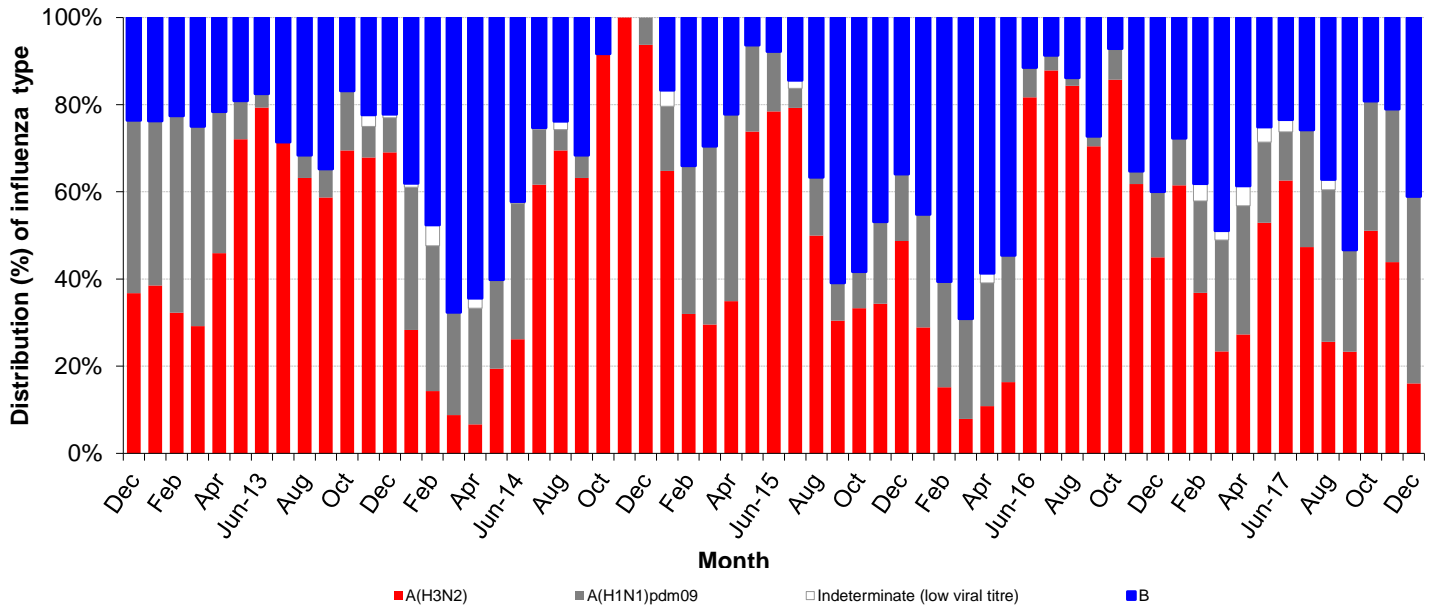
### Polyclinic Attendances for Acute Respiratory Infection, 2017-2018



The proportion of patients with influenza-like illness (ILI) among the polyclinic attendances for ARI is 2.2%.

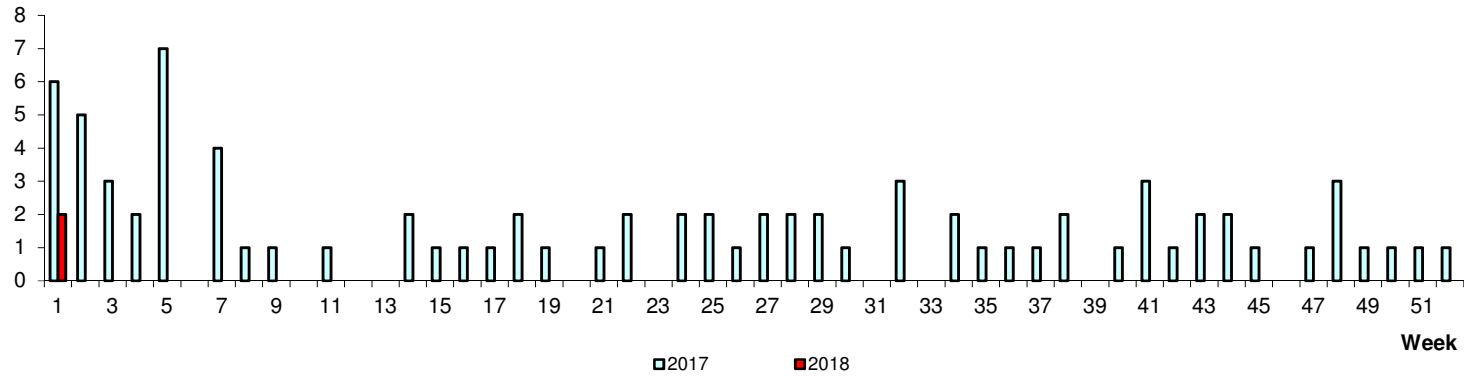
The overall positivity rate for influenza among ILI samples (n=155) in the community was 31.6% in the past 4 weeks. Of the specimens tested positive for influenza in December 2017, these were positive for influenza A(H1N1)pdm09 (42.9%), influenza B (41.1%) and influenza A(H3N2) (16.0%).

### Monthly Influenza Surveillance



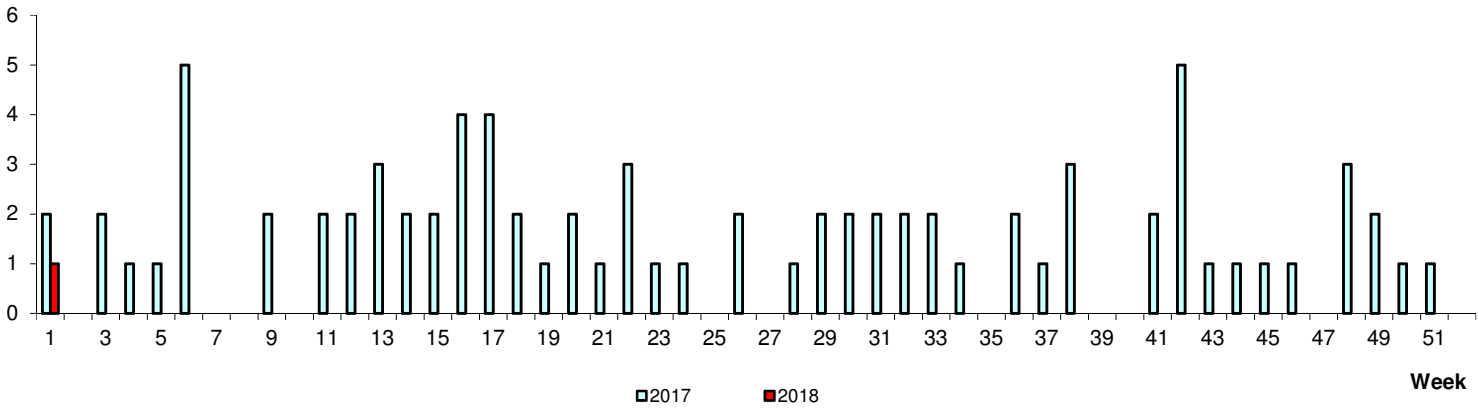
No. of Cases

Paratyphoid/Typhoid



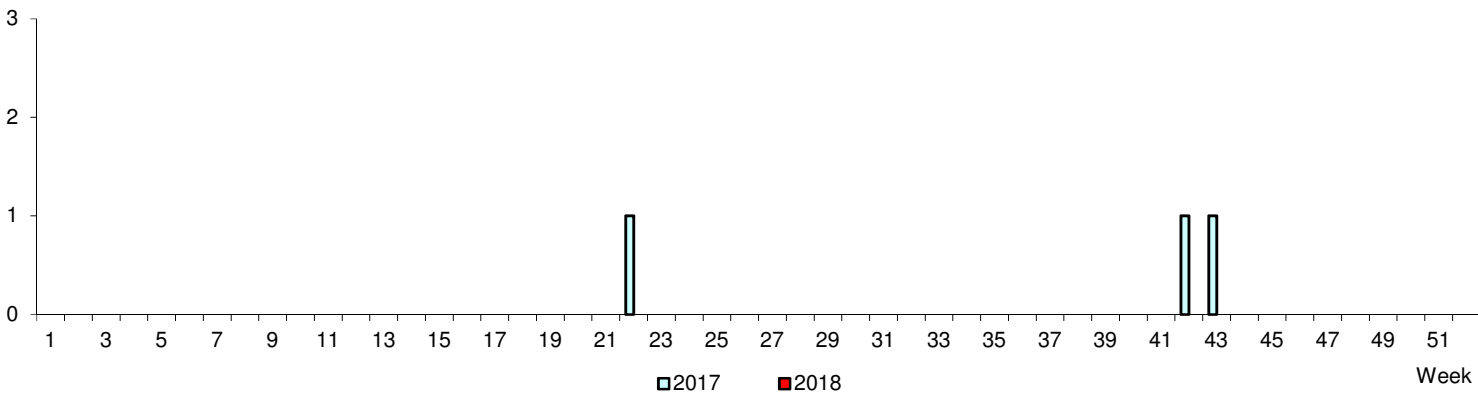
No. of Cases

Acute Hepatitis A



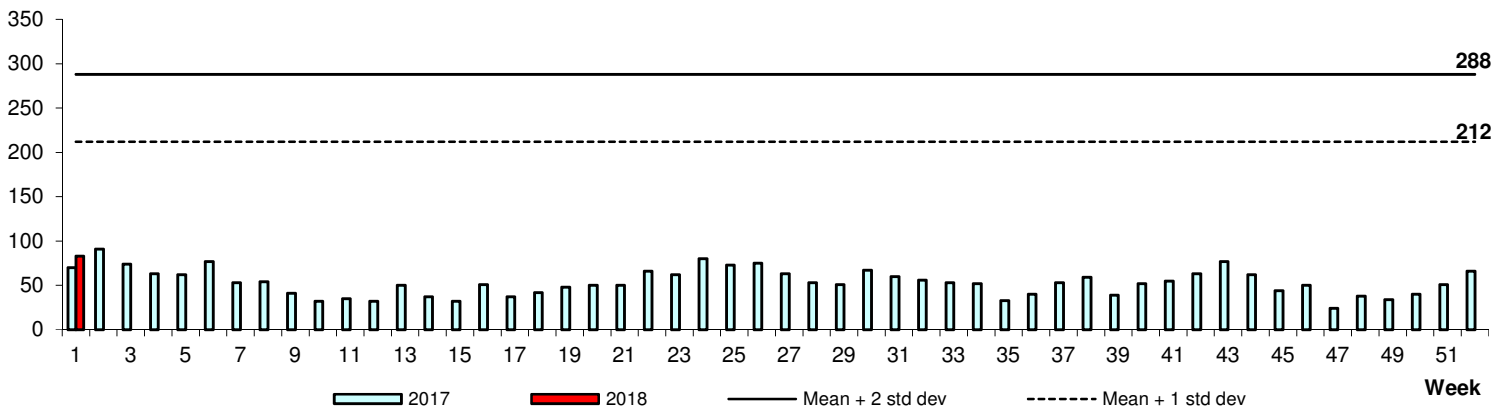
No. of Cases

Cholera



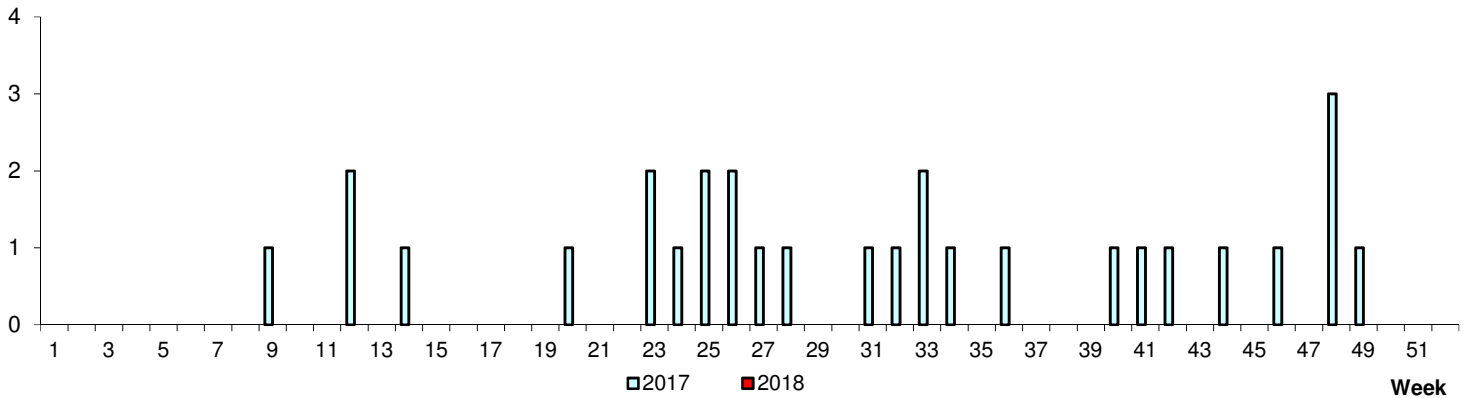
Dengue Fever/Dengue Haemorrhagic Fever

No. of Cases



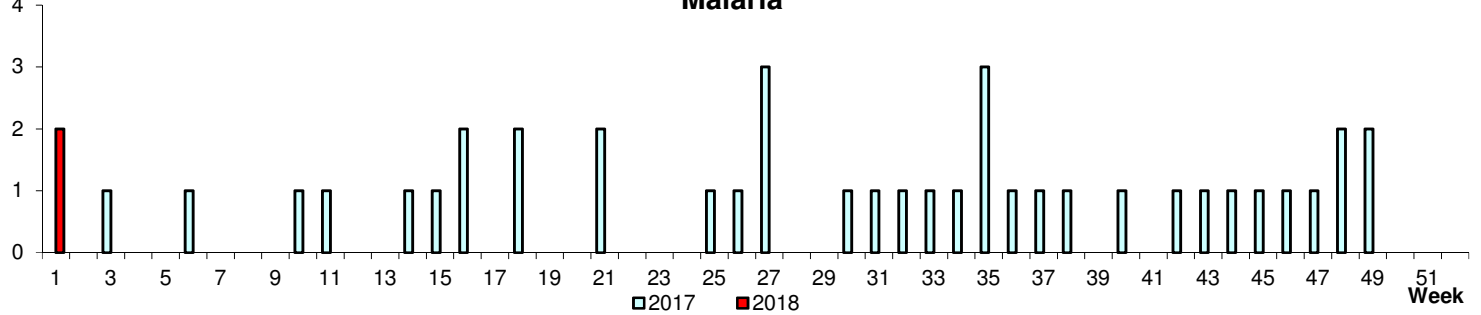
Chikungunya Fever

No. of Cases



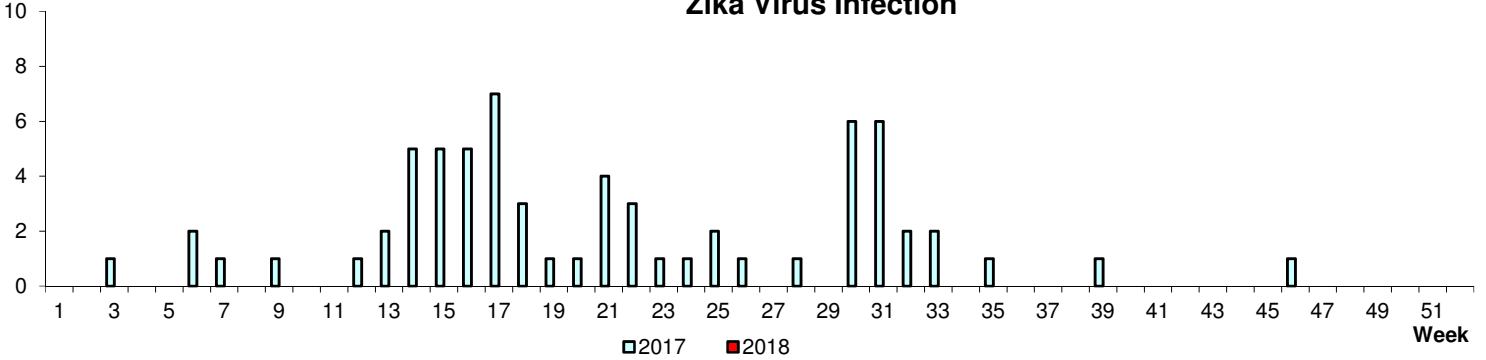
Malaria

No. of Cases

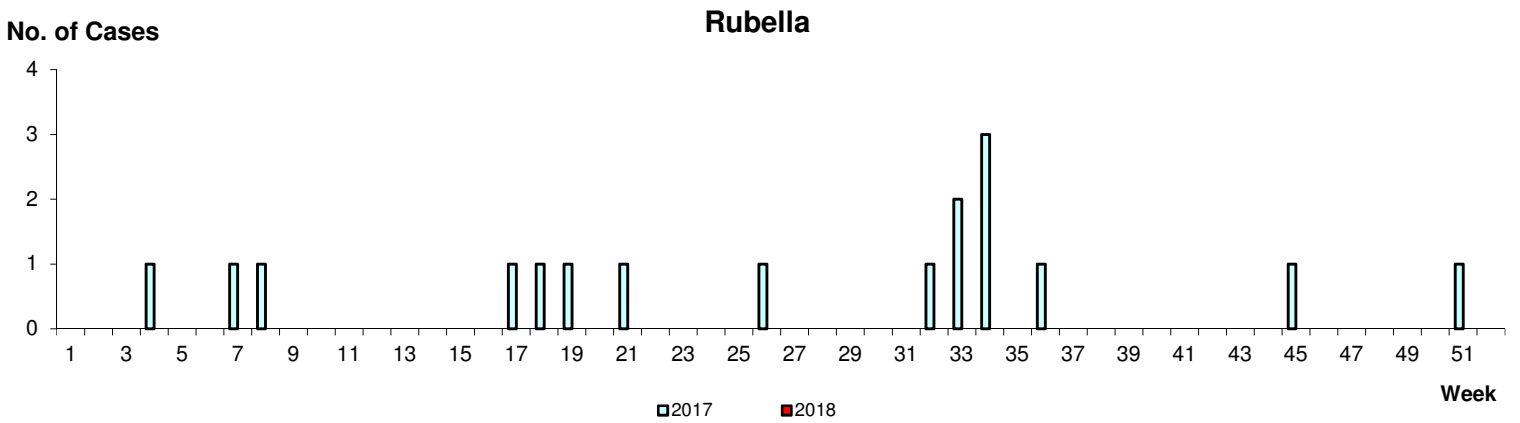
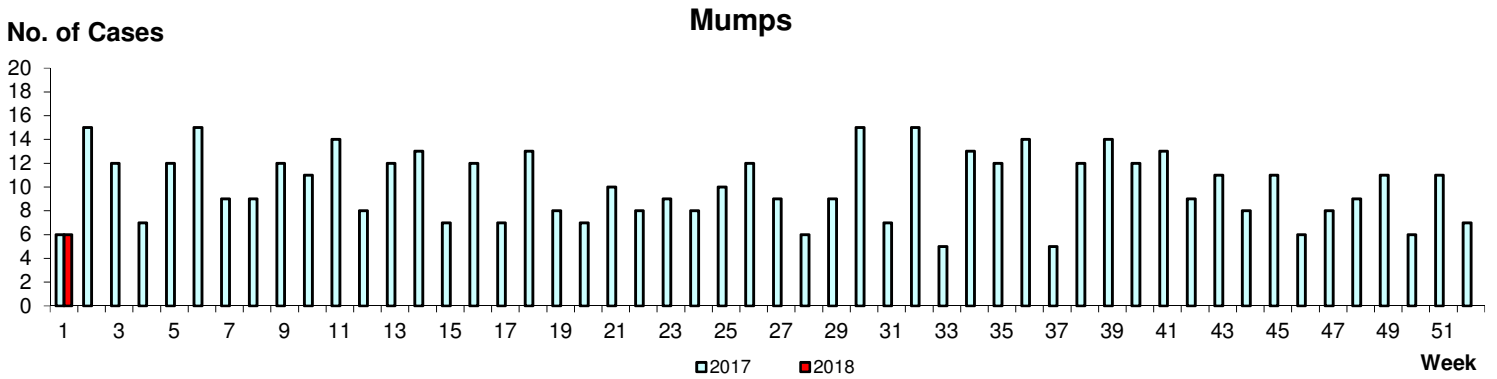
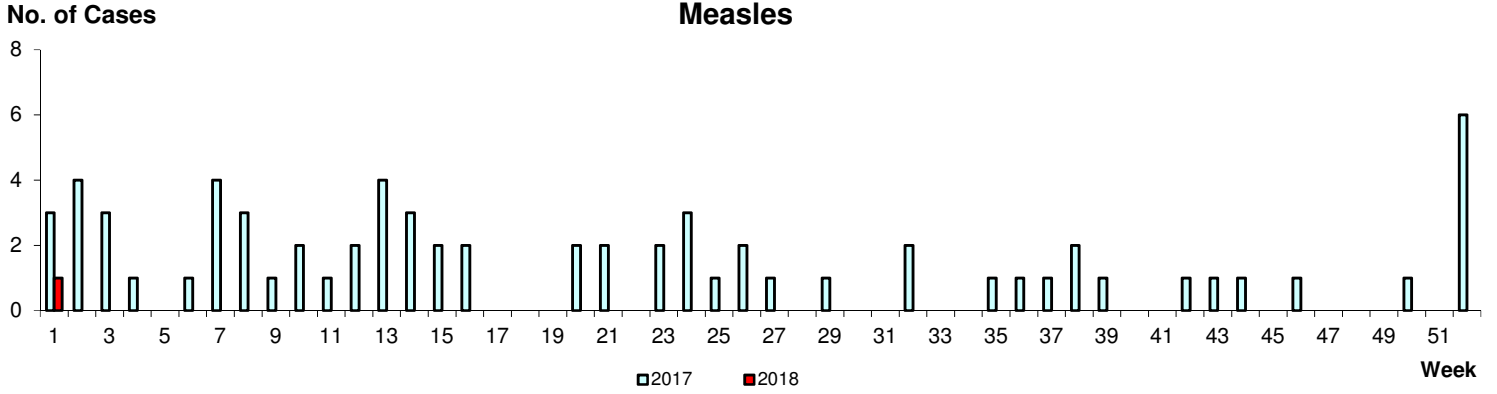


Zika Virus Infection

No. of Cases

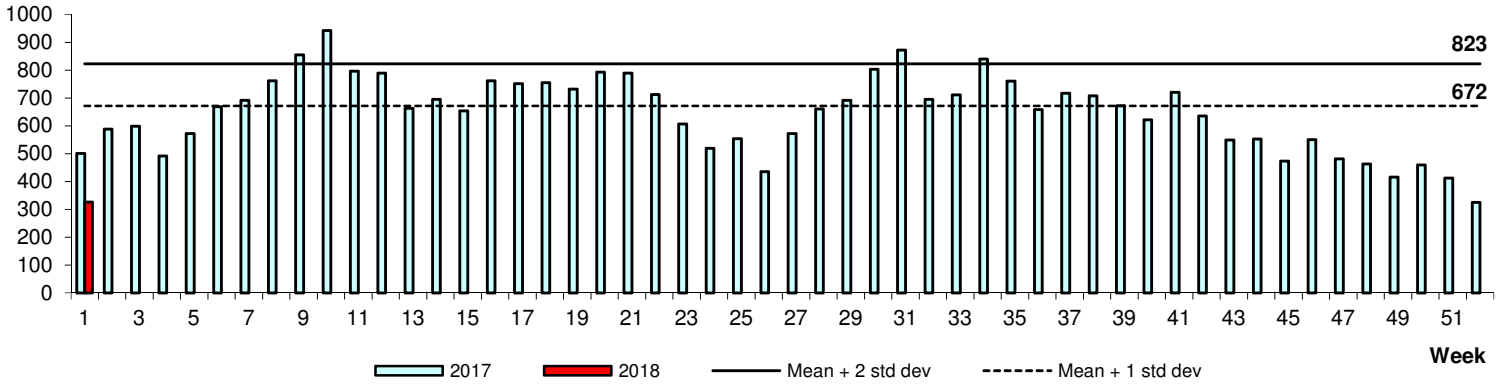


WEEKLY INCIDENCE OF AIR/DROPLET-BORNE DISEASES, 2017-2018



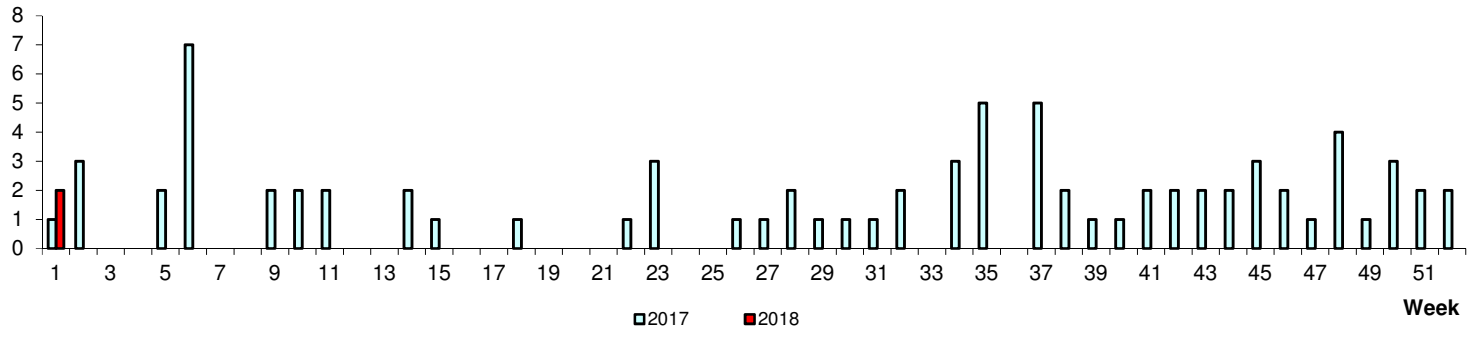
**Hand, Foot & Mouth Disease**

No. of Cases



No. of Cases

**Pertussis**



No. of Cases

**Legionellosis**

