



WEEKLY INFECTIOUS DISEASE BULLETIN
EPIDEMIOLOGICAL WEEK 3 14 - 20 Jan 2018

	E Week 3			Cumulative first 3 Weeks		
	2018*	2017	Median 2013 -2017	2018	2017	Median 2013 -2017
FOOD/WATER-BORNE DISEASES						
Acute Hepatitis A	2	2	3	4	4	6
Acute Hepatitis E	0	2	1	0	6	4
Campylobacteriosis	7	4	5	30	18	27
Cholera	0	0	0	0	0	0
Paratyphoid	0	0	0	2	4	3
Poliomyelitis	0	0	0	0	0	0
Salmonellosis	29	38	30	96	129	114
Typhoid	0	3	2	2	10	6
VECTOR-BORNE DISEASES						
Chikungunya Fever	0	0	0	0	0	2
Dengue Fever	54	73	237	205	233	721
Dengue Haemorrhagic Fever	0	1	1	0	2	1
Japanese Encephalitis [^]	0	0	NA	0	0	NA
Leptospirosis [^]	1	0	NA	2	2	NA
Malaria	0	1	1	3	1	1
Murine Typhus [^]	0	0	NA	0	0	NA
Nipah virus infection	0	0	0	0	0	0
Plague	0	0	0	0	0	0
Yellow Fever	0	0	0	0	0	0
Zika Virus Infection	1	1	NA	1	1	NA
AIR/DROPLET-BORNE DISEASES						
Avian Influenza	0	0	NA	0	0	NA
Diphtheria	0	0	0	0	0	0
Ebola Virus Disease	0	0	NA	0	0	NA
<i>Haemophilus influenzae</i> type b	0	0	0	0	1	0
Hand, Foot And Mouth Disease	542	599	492	1346	1688	1468
Legionellosis	0	0	0	0	0	1
Measles	2	3	0	4	10	1
Melioidosis	1	0	1	3	4	4
Meningococcal Disease	0	0	0	1	0	0
Mumps	11	12	12	30	33	33
Pertussis	2	0	1	7	4	4
Pneumococcal Disease (invasive)	5	3	3	9	6	6
Rubella	0	0	0	0	0	1
Severe acute respiratory syndrome	0	0	0	0	0	0
Tetanus [^]	0	0	0	0	0	
OTHER DISEASES						
Acute hepatitis B	1	0	0	4	3	2
Acute hepatitis C	0	0	0	0	1	1
Botulism [^]	0	0	NA	0	0	NA
MERS-CoV						
Suspect cases tested	2	NA	NA	44	41	NA
Other patients tested	1	NA	NA	18	31	NA
POLYCLINIC ATTENDANCES - AVERAGE DAILY NUMBER						
Acute upper respiratory infections	4234	3060	3060			NA
Acute conjunctivitis	96	91	99			NA
Acute Diarrhoea	583	558	521			NA
Chickenpox	20	16	NA			NA
HIV/STI/TB NOTIFICATIONS						
	2017	Dec		Cumulative 2017		
HIV/AIDS		25		399		
Legally Notifiable STIs**		670		8399		
Tuberculosis		135		1560		

* Preliminary figures, subject to revision when more information is available.

** *Wef Jan 2010, reporting has changed from all types of STIs to legally notifiable STIs, which comprise gonorrhoea, non-gonococcal urethritis, syphilis (congenital, infectious, non-infectious), chlamydia and genital herpes (first episode and recurrent).*

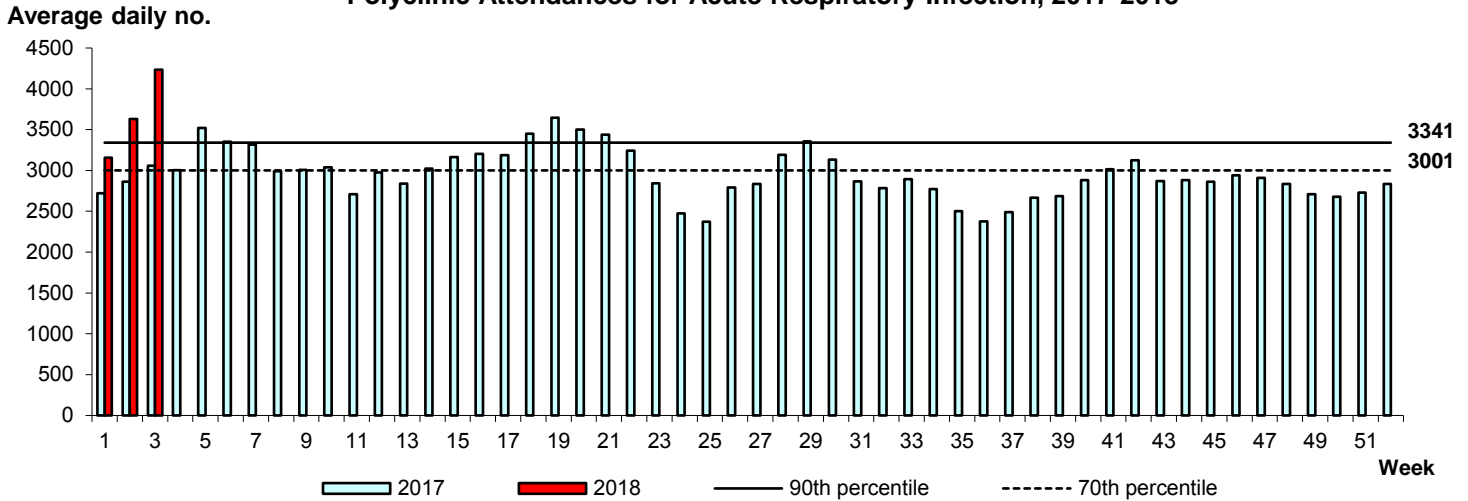
[^] Added to the list of notifiable diseases as of 28 Sep 2016

Influenza Situation in Singapore 2018

Influenza indicators for E-week 3 (14 - 20 Jan 2018) are as follows:

The average daily number of patients seeking treatment in the polyclinics for ARI increased from 3,632 (over 5.5 working days) in E-week 2 to 4,234 (over 5.5 working days) in E-week 3.

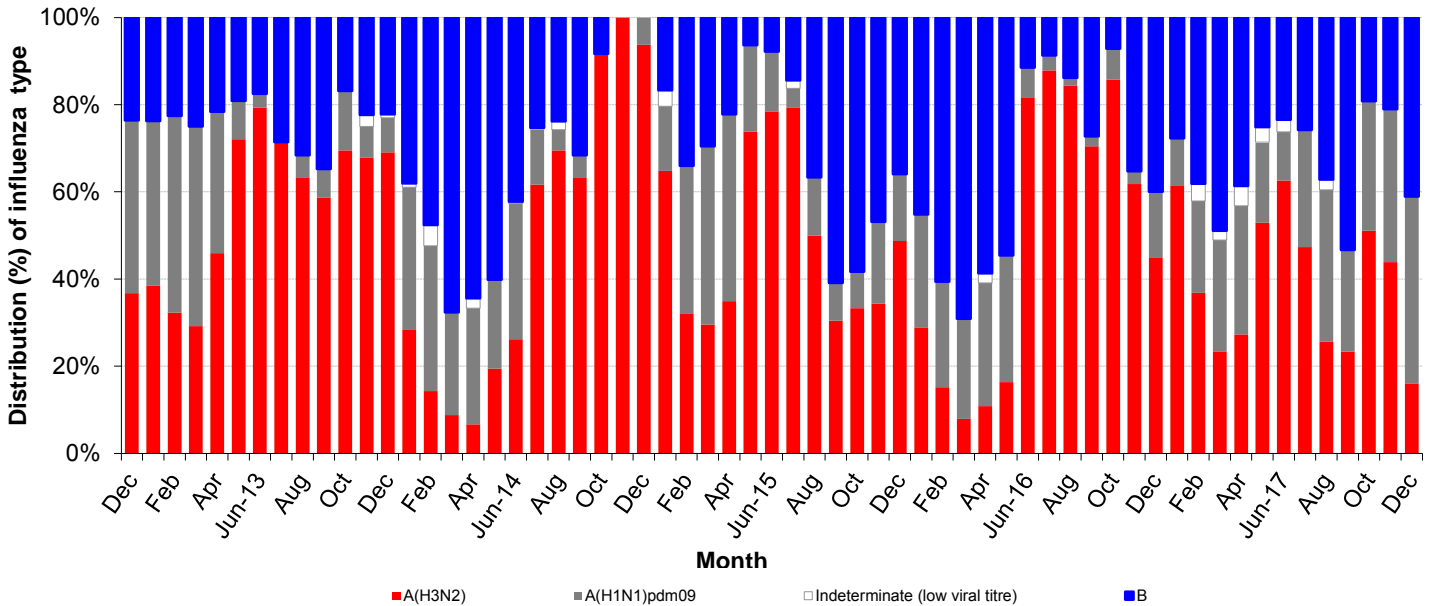
Polyclinic Attendances for Acute Respiratory Infection, 2017-2018

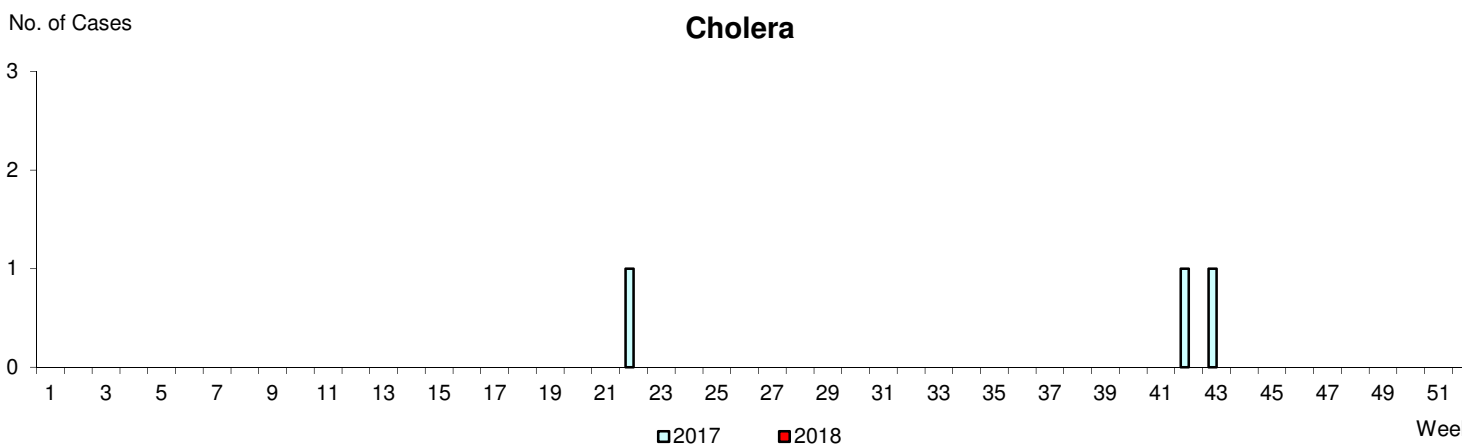
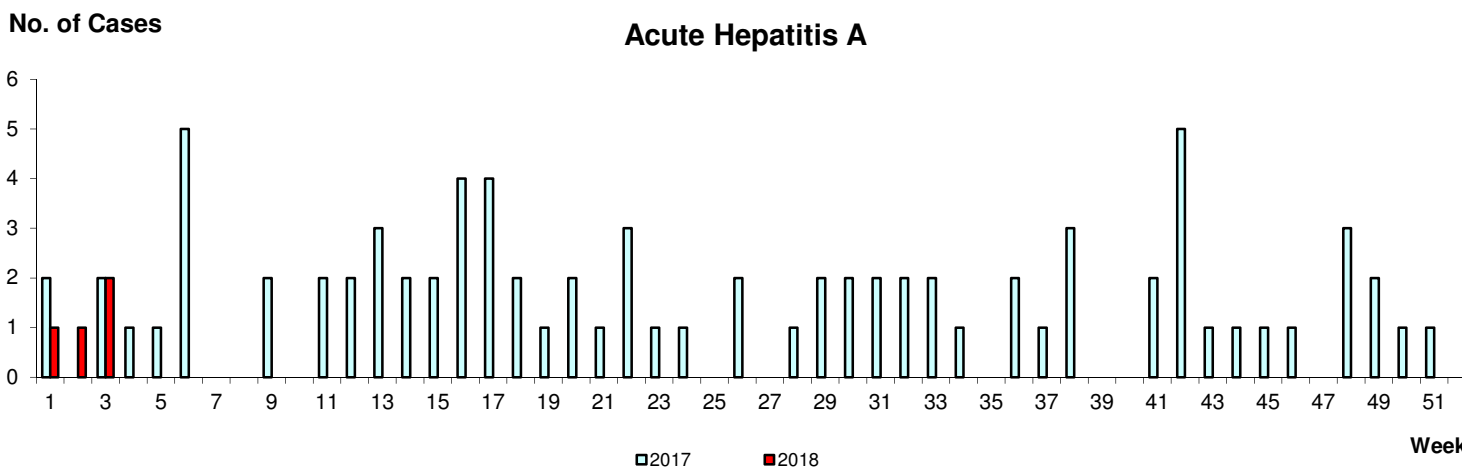
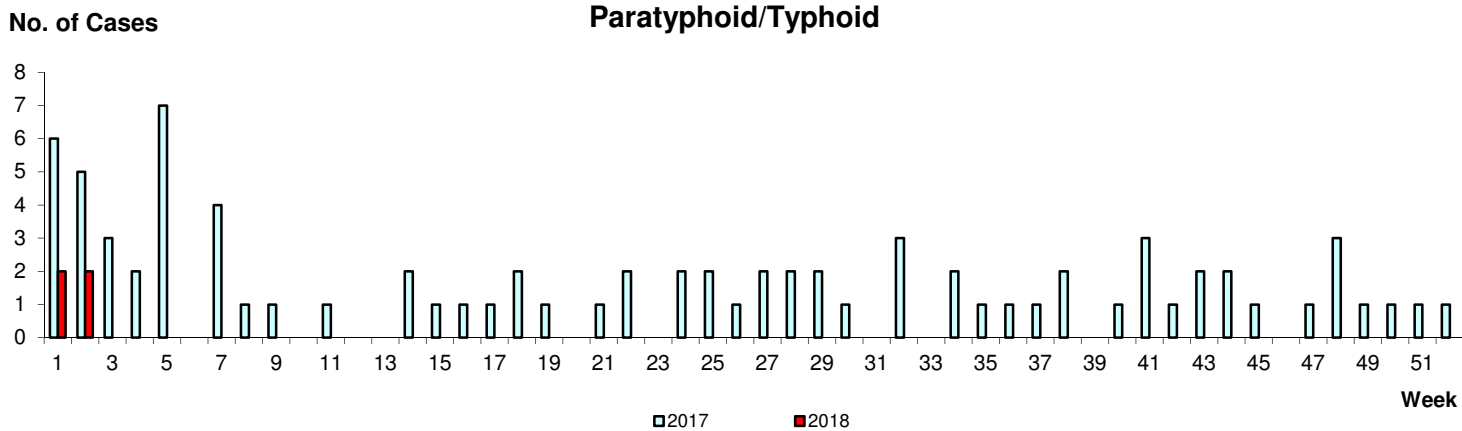


The proportion of patients with influenza-like illness (ILI) among the polyclinic attendances for ARI is 2.6%.

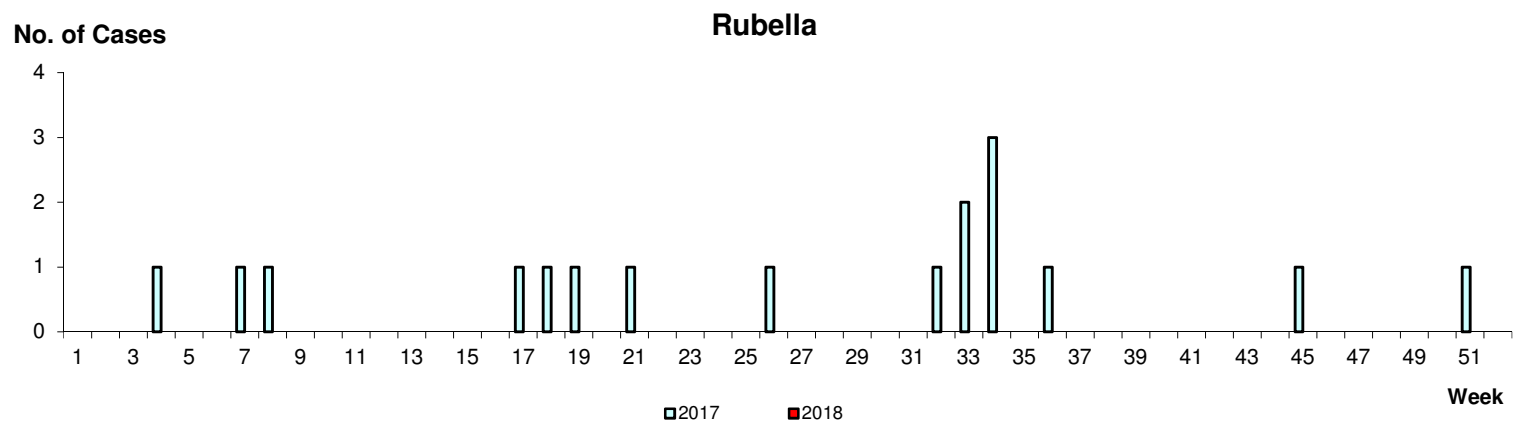
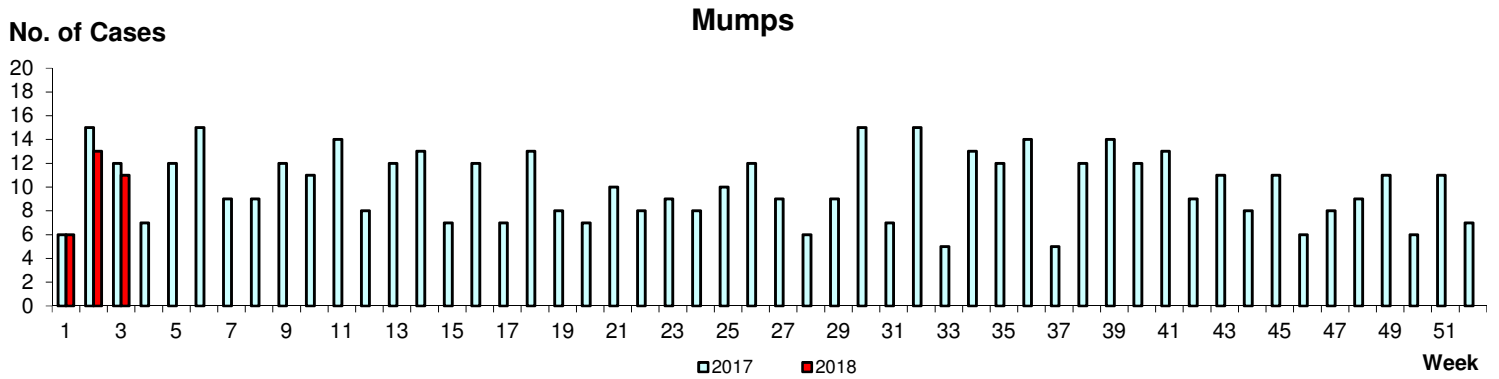
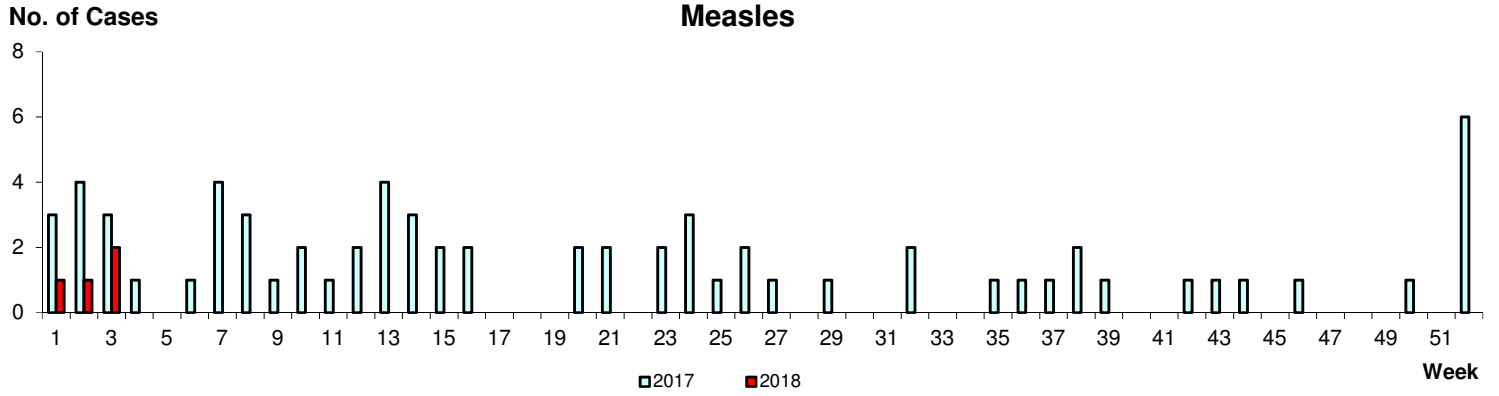
The overall positivity rate for influenza among ILI samples (n=207) in the community was 47.3% in the past 4 weeks. Of the specimens tested positive for influenza in December 2017, these were positive for influenza A(H1N1)pdm09 (42.9%), influenza B (41.1%) and influenza A(H3N2) (16.0%).

Monthly Influenza Surveillance



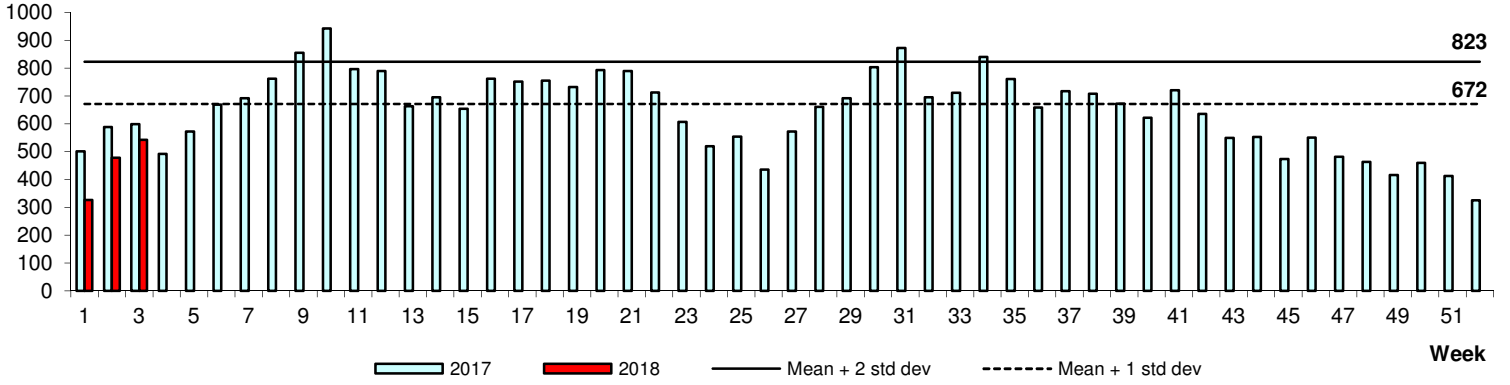


WEEKLY INCIDENCE OF AIR/DROPLET-BORNE DISEASES, 2017-2018



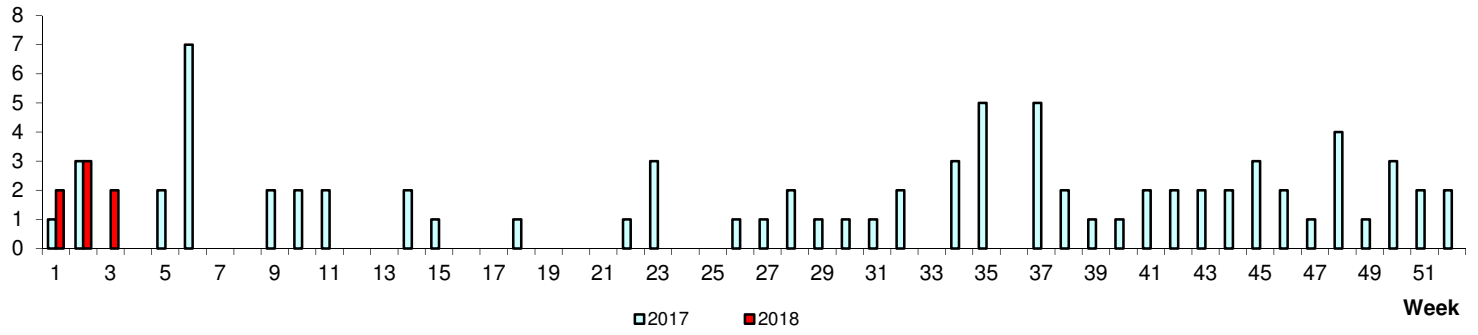
Hand, Foot & Mouth Disease

No. of Cases



No. of Cases

Pertussis



No. of Cases

Legionellosis

