



WEEKLY INFECTIOUS DISEASE BULLETIN
EPIDEMIOLOGICAL WEEK 4 21 - 27 Jan 2018

	E Week 4			Cumulative first 4 Weeks		
	2018*	2017	Median 2013 -2017	2018	2017	Median 2013 -2017
FOOD/WATER-BORNE DISEASES						
Acute Hepatitis A	0	1	0	4	5	6
Acute Hepatitis E	2	0	1	2	6	4
Campylobacteriosis	9	11	6	39	29	33
Cholera	0	0	0	0	0	0
Paratyphoid	1	0	0	3	4	3
Poliomyelitis	0	0	0	0	0	0
Salmonellosis	23	33	32	119	162	135
Typhoid	3	2	4	5	12	9
VECTOR-BORNE DISEASES						
Chikungunya Fever	0	0	1	0	0	3
Dengue Fever	45	63	264	250	296	980
Dengue Haemorrhagic Fever	0	0	0	0	2	2
Japanese Encephalitis [^]	0	0	NA	0	0	NA
Leptospirosis [^]	1	1	NA	3	3	NA
Malaria	0	0	0	3	1	1
Murine Typhus [^]	0	0	NA	0	0	NA
Nipah virus infection	0	0	0	0	0	0
Plague	0	0	0	0	0	0
Yellow Fever	0	0	0	0	0	0
Zika Virus Infection	0	0	NA	1	1	NA
AIR/DROPLET-BORNE DISEASES						
Avian Influenza	0	0	NA	0	0	NA
Diphtheria	0	0	0	0	0	0
Ebola Virus Disease	0	0	NA	0	0	NA
<i>Haemophilus influenzae</i> type b	0	0	0	0	1	0
Hand, Foot And Mouth Disease	645	492	492	1991	2180	1970
Legionellosis	2	0	0	2	0	2
Measles	0	1	0	4	11	1
Melioidosis	0	1	1	3	5	5
Meningococcal Disease	0	0	0	1	0	0
Mumps	12	7	10	42	40	40
Pertussis	2	0	1	9	4	4
Pneumococcal Disease (invasive)	0	1	2	9	7	10
Rubella	0	1	1	0	1	1
Severe acute respiratory syndrome	0	0	0	0	0	0
Tetanus [^]	1	0	0	1	0	
OTHER DISEASES						
Acute hepatitis B	1	1	1	5	4	3
Acute hepatitis C	0	0	0	0	1	1
Botulism [^]	0	0	NA	0	0	NA
MERS-CoV						
Suspect cases tested	2	NA	NA	44	41	NA
Other patients tested	1	NA	NA	18	31	NA
POLYCLINIC ATTENDANCES - AVERAGE DAILY NUMBER						
Acute upper respiratory infections	4048	3002	3111			NA
Acute conjunctivitis	91	82	102			NA
Acute Diarrhoea	607	509	509			NA
Chickenpox	19	13	NA			NA
HIV/STI/TB NOTIFICATIONS						
	2017	Dec		Cumulative 2017		
HIV/AIDS		25		399		
Legally Notifiable STIs**		670		8399		
Tuberculosis		135		1560		

* Preliminary figures, subject to revision when more information is available.

** *Wef Jan 2010, reporting has changed from all types of STIs to legally notifiable STIs, which comprise gonorrhoea, non-gonococcal urethritis, syphilis (congenital, infectious, non-infectious), chlamydia and genital herpes (first episode and recurrent).*

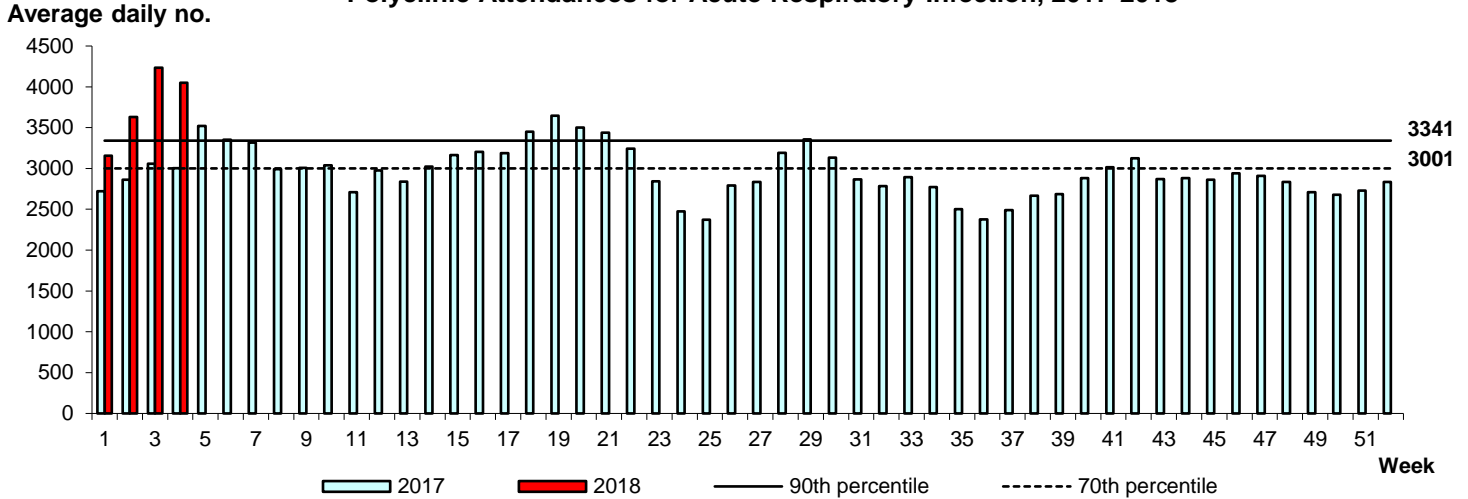
[^] Added to the list of notifiable diseases as of 28 Sep 2016

Influenza Situation in Singapore 2018

Influenza indicators for E-week 4 (21 - 27 Jan 2018) are as follows:

The average daily number of patients seeking treatment in the polyclinics for ARI decreased from 4,234 (over 5.5 working days) in E-week 3 to 4,048 (over 5.5 working days) in E-week 4.

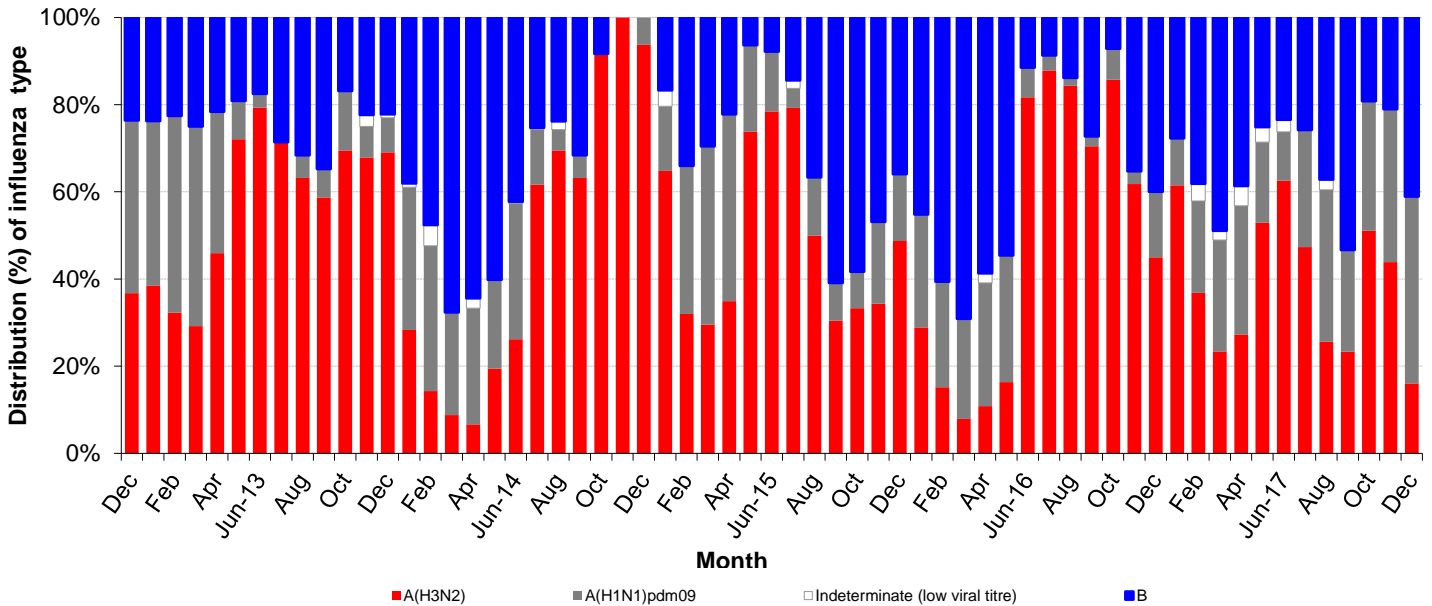
Polyclinic Attendances for Acute Respiratory Infection, 2017-2018

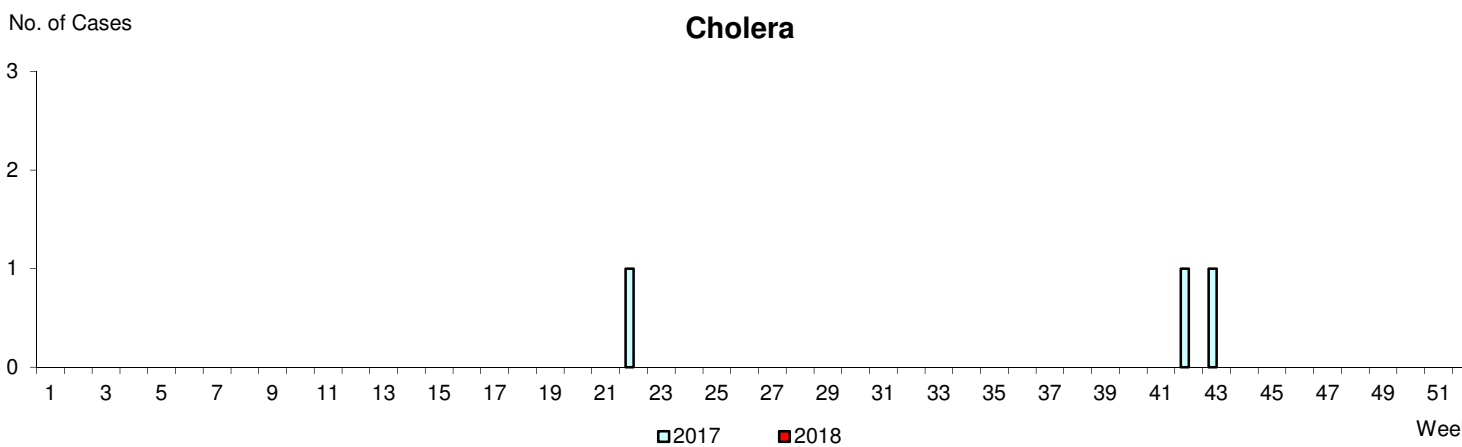
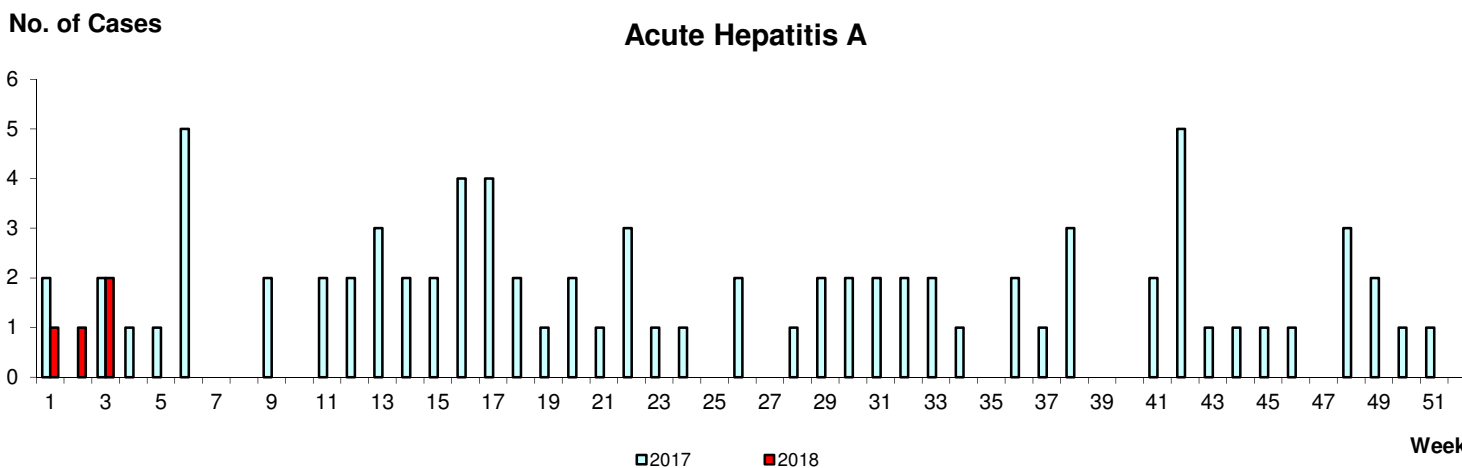
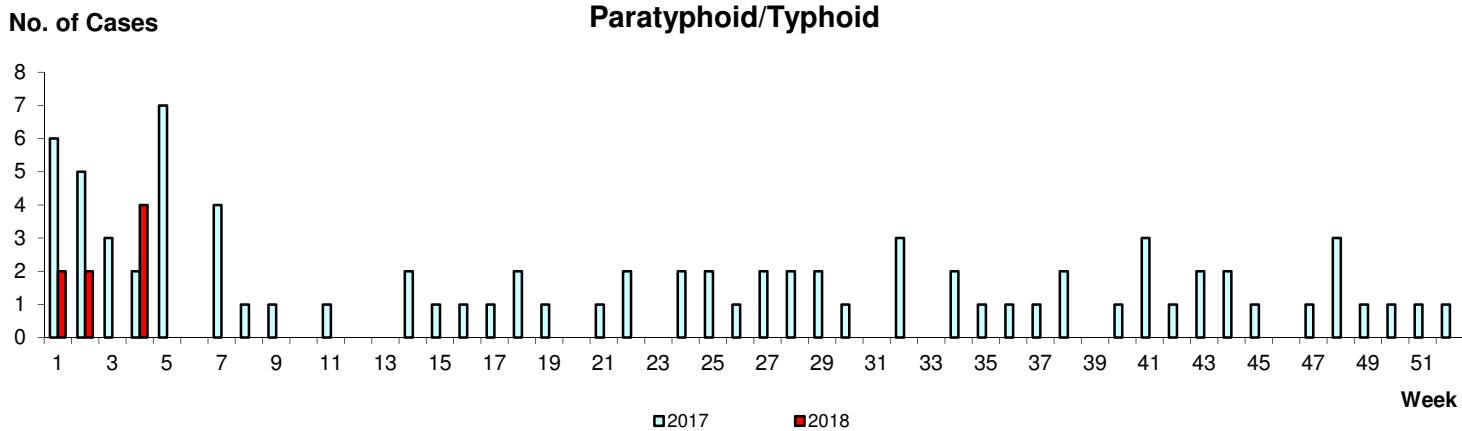


The proportion of patients with influenza-like illness (ILI) among the polyclinic attendances for ARI is 3.1%.

The overall positivity rate for influenza among ILI samples (n=258) in the community was 47.3% in the past 4 weeks. Of the specimens tested positive for influenza in December 2017, these were positive for influenza A(H1N1)pdm09 (42.9%), influenza B (41.1%) and influenza A(H3N2) (16.0%).

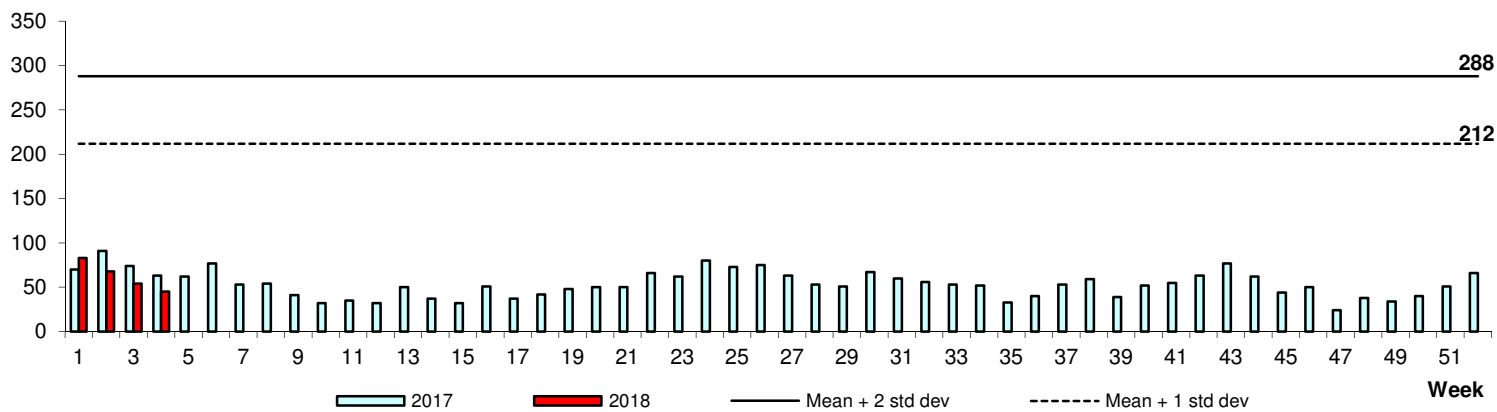
Monthly Influenza Surveillance





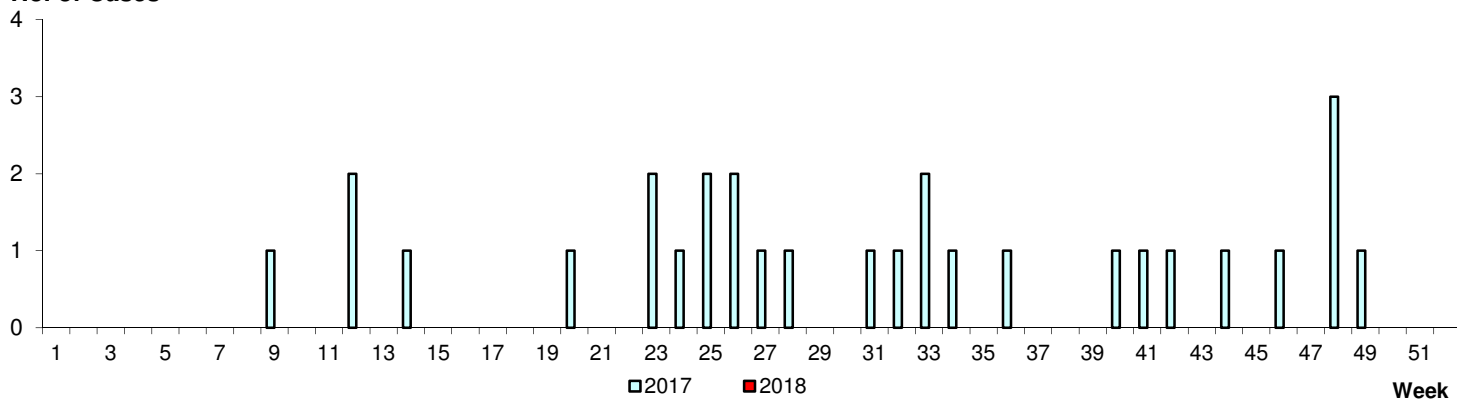
Dengue Fever/Dengue Haemorrhagic Fever

No. of Cases



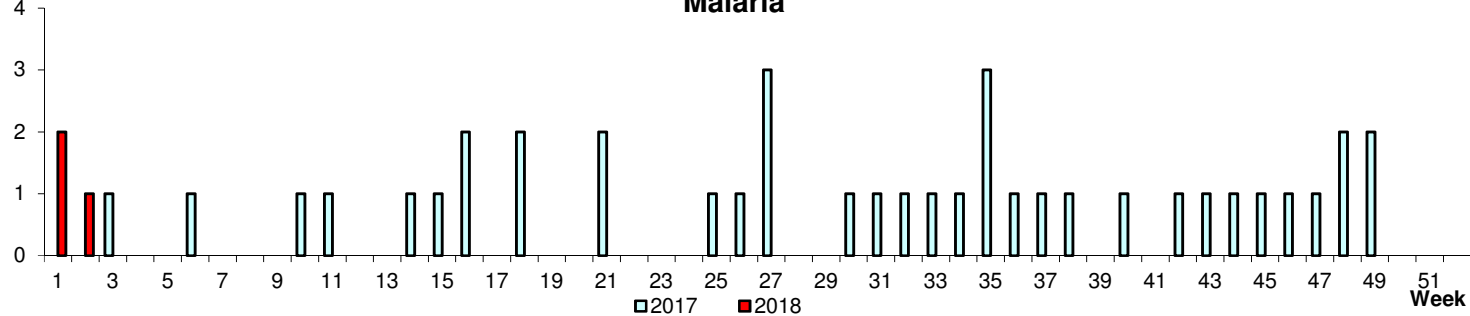
Chikungunya Fever

No. of Cases



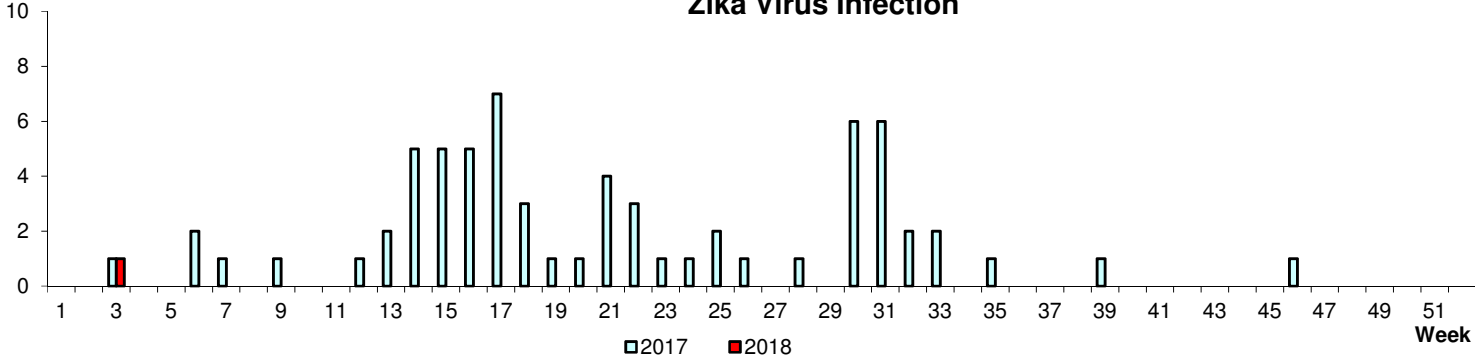
Malaria

No. of Cases



Zika Virus Infection

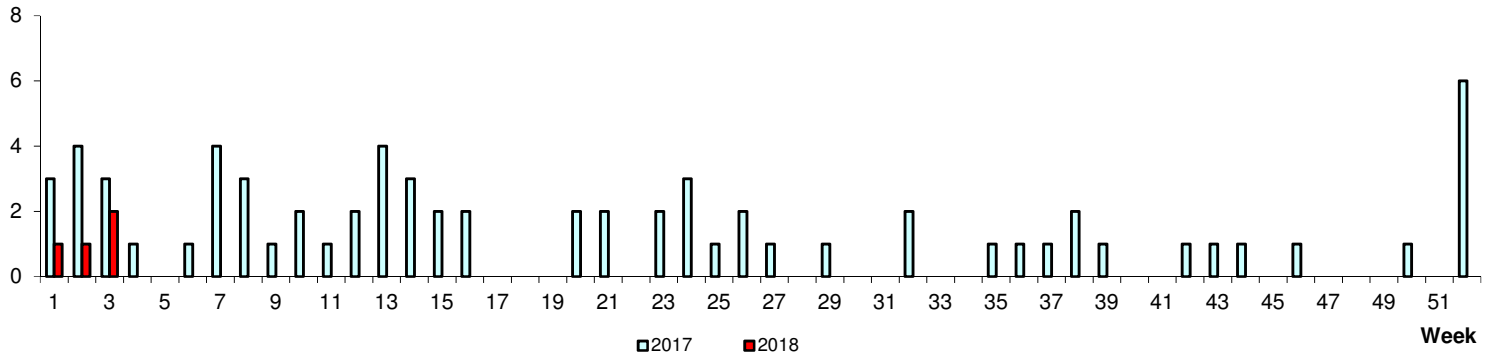
No. of Cases



WEEKLY INCIDENCE OF AIR/DROPLET-BORNE DISEASES, 2017-2018

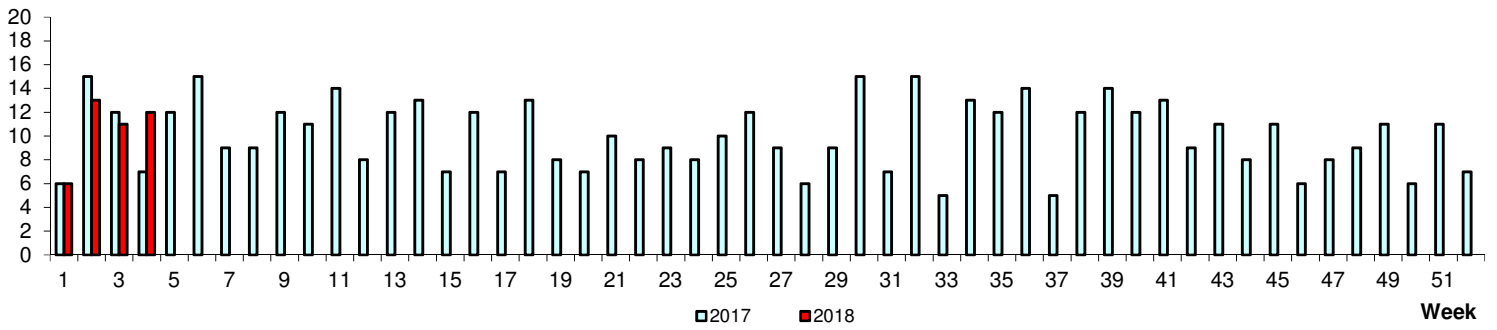
No. of Cases

Measles



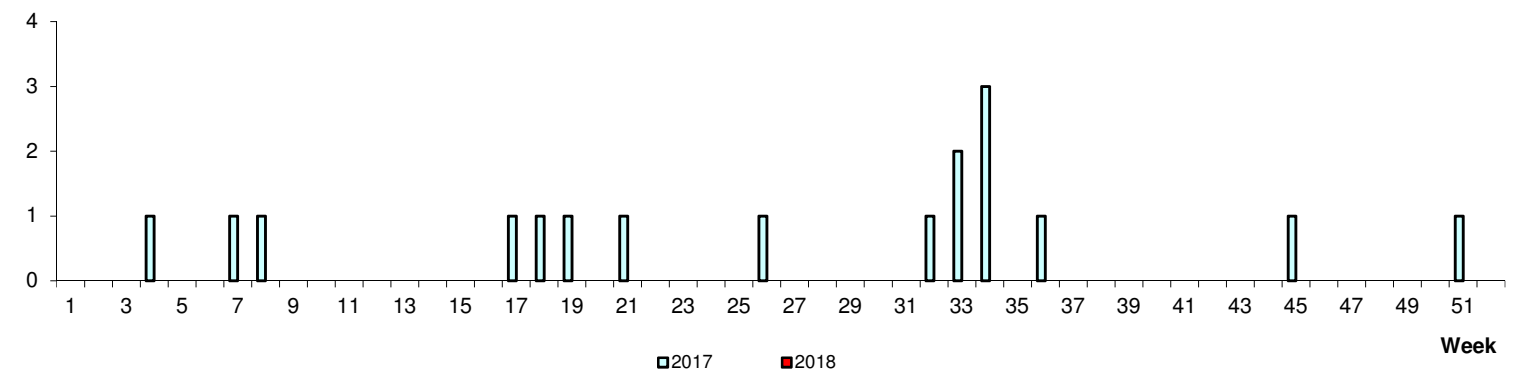
No. of Cases

Mumps



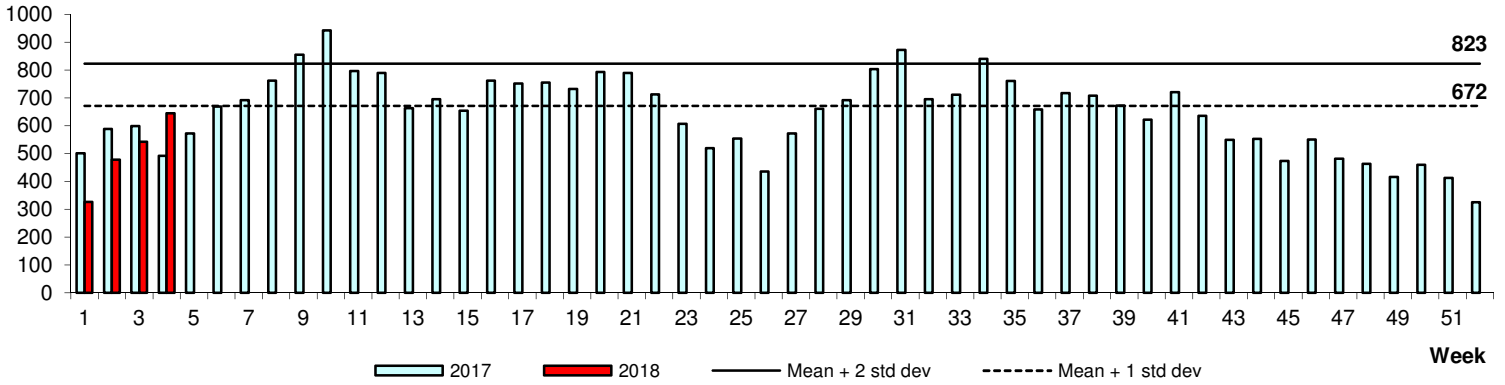
No. of Cases

Rubella



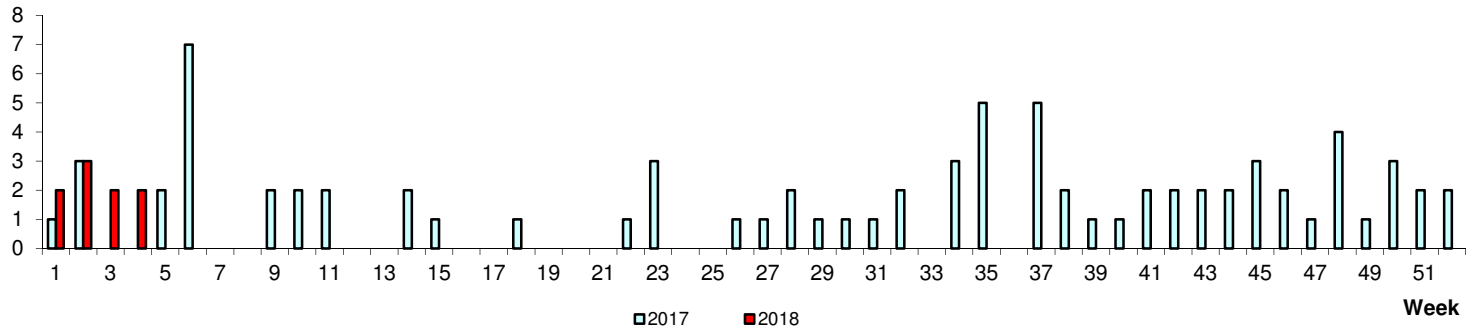
Hand, Foot & Mouth Disease

No. of Cases



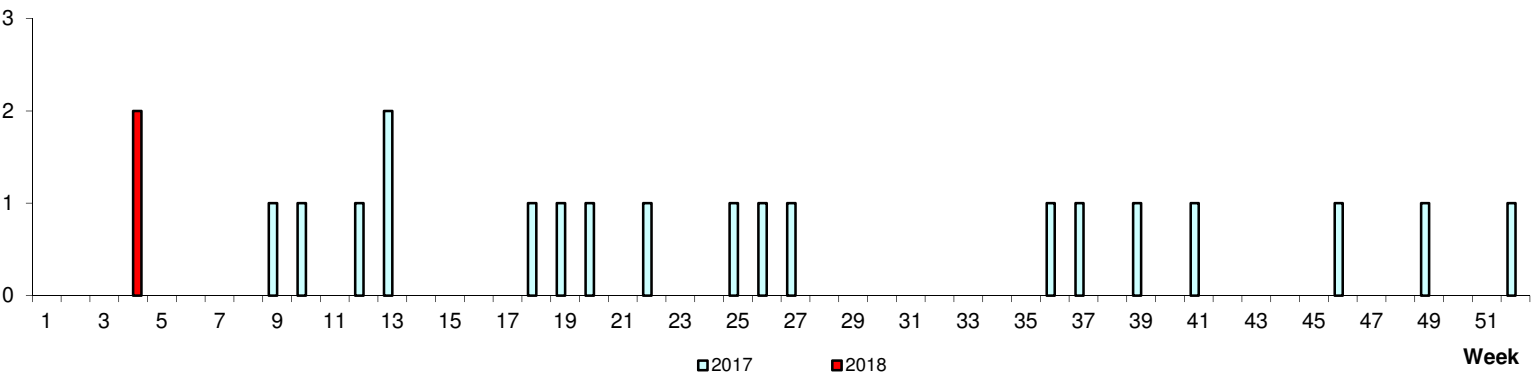
No. of Cases

Pertussis



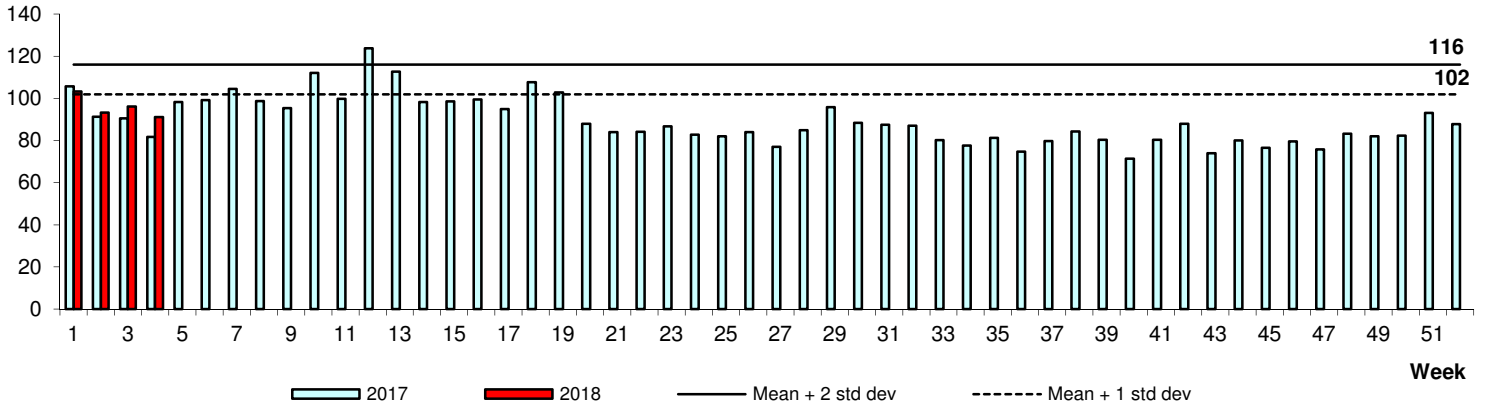
No. of Cases

Legionellosis



Conjunctivitis

Average daily no.



Average daily no.

Diarrhoeal Illness

