



WEEKLY INFECTIOUS DISEASE BULLETIN  
EPIDEMIOLOGICAL WEEK 5 28 Jan - 3 Feb 2018

	E Week 5			Cumulative first 5 Weeks		
	2018*	2017	Median 2013 -2017	2018	2017	Median 2013 -2017
<b>FOOD/WATER-BORNE DISEASES</b>						
Acute Hepatitis A	1	1	1	5	6	7
Acute Hepatitis E	0	2	1	2	8	6
Campylobacteriosis	9	12	7	48	41	41
Cholera	1	0	0	1	0	0
Paratyphoid	0	1	1	3	5	3
Poliomyelitis	0	0	0	0	0	0
Salmonellosis	26	44	30	145	206	157
Typhoid	0	6	1	5	18	10
<b>VECTOR-BORNE DISEASES</b>						
Chikungunya Fever	0	0	0	0	0	3
Dengue Fever	48	62	234	298	358	1192
Dengue Haemorrhagic Fever	0	0	0	0	2	2
Japanese Encephalitis <sup>^</sup>	0	0	NA	0	0	NA
Leptospirosis <sup>^</sup>	0	1	NA	3	4	NA
Malaria	0	0	0	3	1	1
Murine Typhus <sup>^</sup>	0	0	NA	0	0	NA
Nipah virus infection	0	0	0	0	0	0
Plague	0	0	0	0	0	0
Yellow Fever	0	0	0	0	0	0
Zika Virus Infection	0	0	NA	1	1	NA
<b>AIR/DROPLET-BORNE DISEASES</b>						
Avian Influenza	0	0	NA	0	0	NA
Diphtheria	0	0	0	0	0	0
Ebola Virus Disease	0	0	NA	0	0	NA
<i>Haemophilus influenzae</i> type b	0	2	0	0	3	0
Hand, Foot And Mouth Disease	757	572	492	2748	2752	2462
Legionellosis	0	0	0	2	0	2
Measles	1	0	1	5	11	2
Melioidosis	1	1	0	4	6	6
Meningococcal Disease	0	1	0	1	1	1
Mumps	17	12	11	59	52	50
Pertussis	0	2	1	9	6	6
Pneumococcal Disease (invasive)	2	5	3	11	12	13
Rubella	0	0	0	0	1	1
Severe acute respiratory syndrome	0	0	0	0	0	0
Tetanus <sup>^</sup>	0	0	0	1	0	
<b>OTHER DISEASES</b>						
Acute hepatitis B	1	2	1	6	6	4
Acute hepatitis C	0	1	0	0	2	1
Botulism <sup>^</sup>	1	0	NA	1	0	NA
<b>MERS-CoV</b>						
Suspect cases tested	2	NA	NA	44	41	NA
Other patients tested	1	NA	NA	18	31	NA
<b>POLYCLINIC ATTENDANCES - AVERAGE DAILY NUMBER</b>						
Acute upper respiratory infections	3960	3521	3125			NA
Acute conjunctivitis	109	98	98			NA
Acute Diarrhoea	583	583	502			NA
Chickenpox	17	17	NA			NA
<b>HIV/STI/TB NOTIFICATIONS</b>						
	2017	Dec		Cumulative 2017		
HIV/AIDS		25		399		
Legally Notifiable STIs**		670		8399		
Tuberculosis		135		1560		

\* Preliminary figures, subject to revision when more information is available.

\*\* *Wef Jan 2010, reporting has changed from all types of STIs to legally notifiable STIs, which comprise gonorrhoea, non-gonococcal urethritis, syphilis (congenital, infectious, non-infectious), chlamydia and genital herpes (first episode and recurrent).*

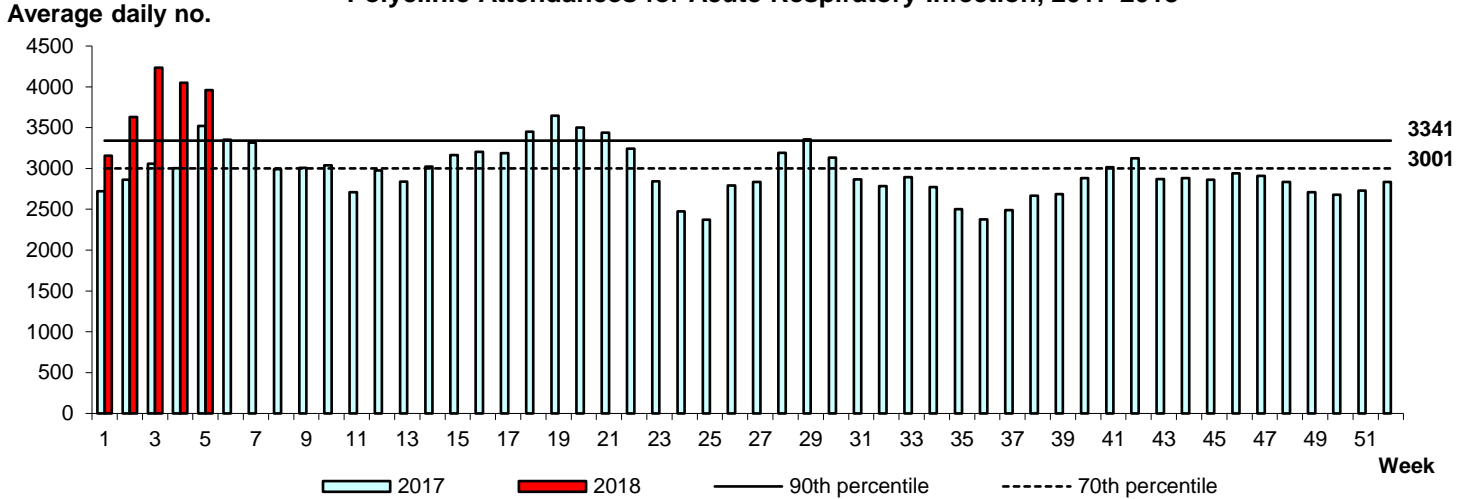
<sup>^</sup> Added to the list of notifiable diseases as of 28 Sep 2016

## Influenza Situation in Singapore 2018

Influenza indicators for E-week 5 (28 Jan - 3 Feb 2018) are as follows:

The average daily number of patients seeking treatment in the polyclinics for ARI decreased from 4,048 (over 5.5 working days) in E-week 4 to 3,960 (over 5.5 working days) in E-week 5.

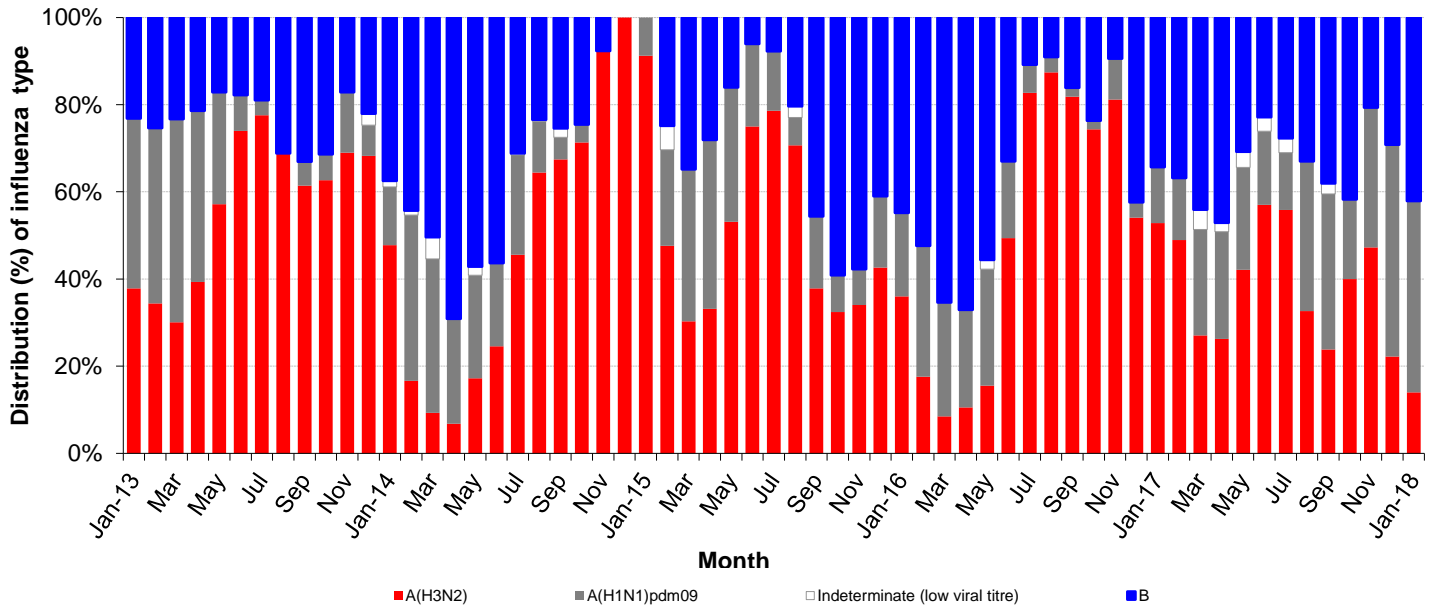
### Polyclinic Attendances for Acute Respiratory Infection, 2017-2018

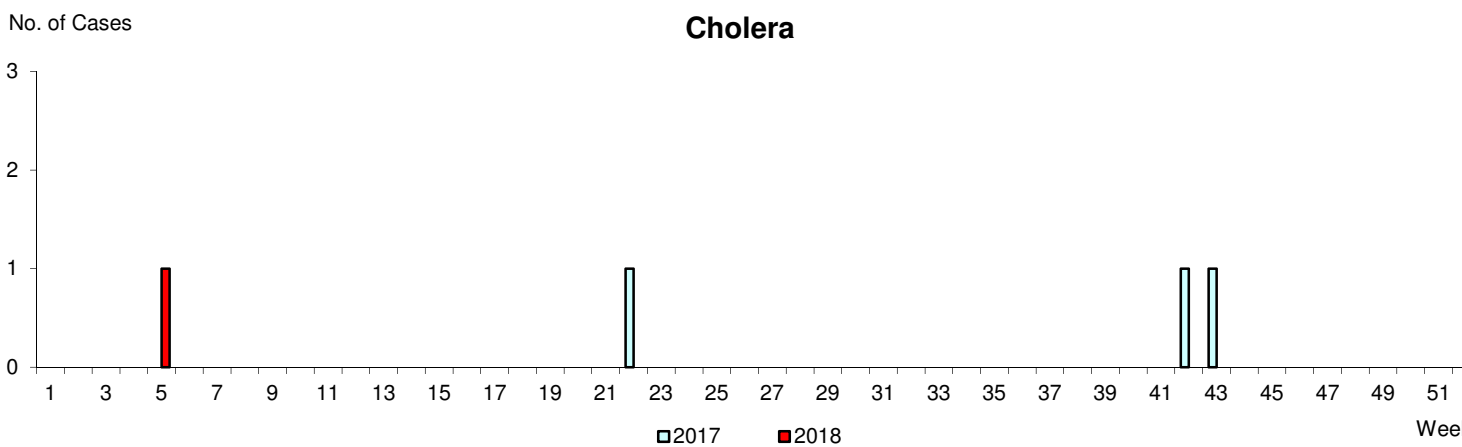
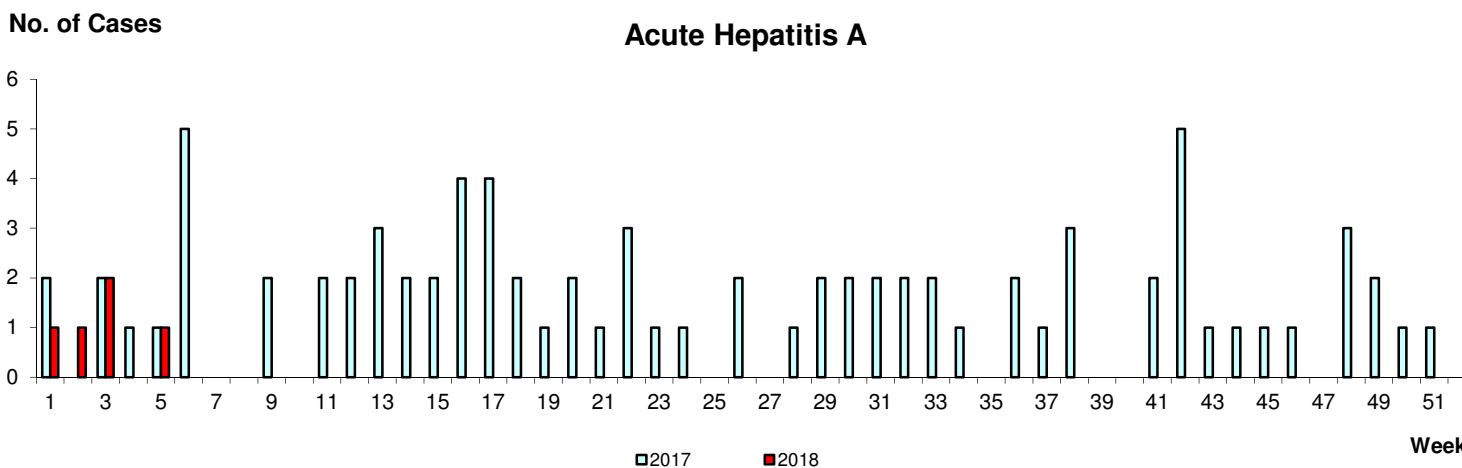
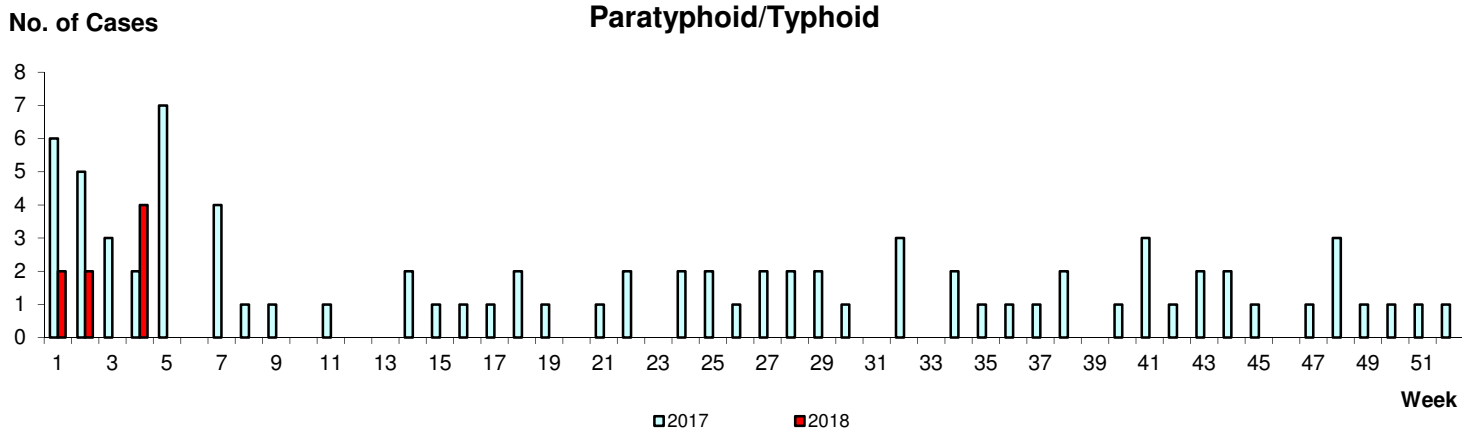


The proportion of patients with influenza-like illness (ILI) among the polyclinic attendances for ARI is 2.6%.

The overall positivity rate for influenza among ILI samples (n=314) in the community was 48.7% in the past 4 weeks. Of the specimens tested positive for influenza in January 2018, these were positive for influenza B (57.1%), influenza A(H1N1)pdm09 (27.9%), influenza A(H3N2) (13.6%) and influenza A (subtype indeterminate due to low viral titre) (1.4%).

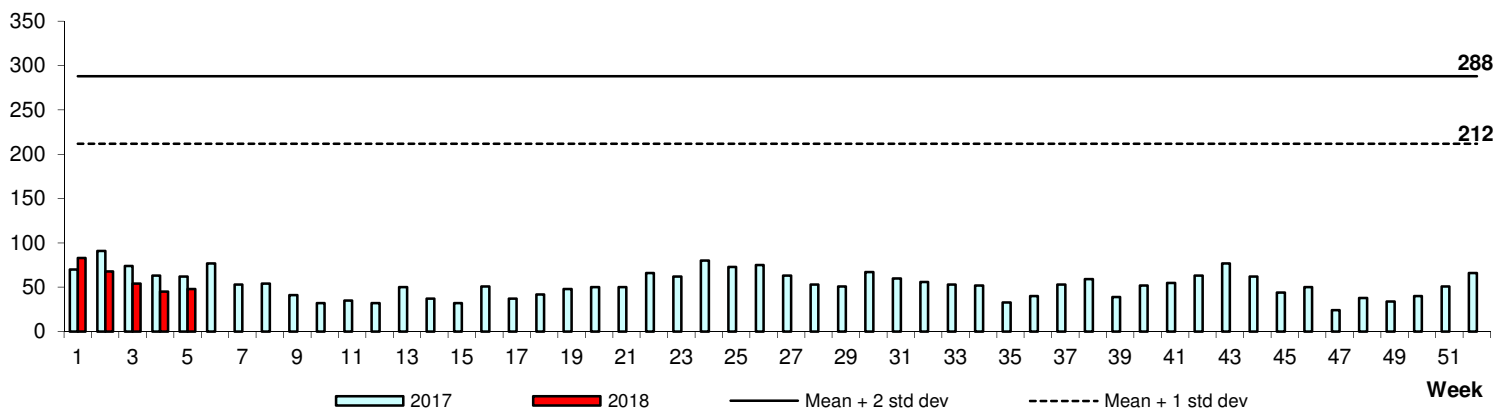
### Monthly Influenza Surveillance





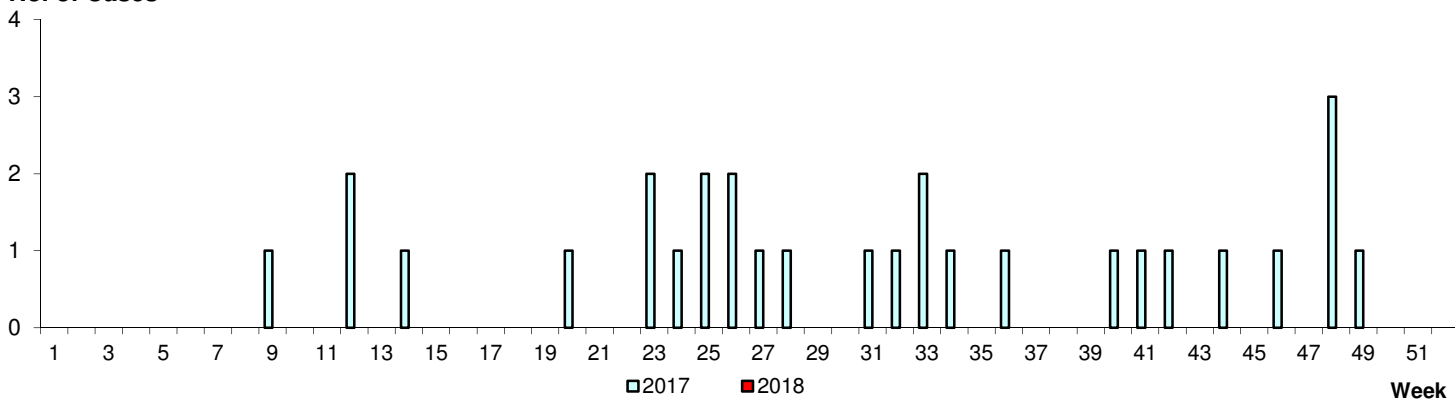
Dengue Fever/Dengue Haemorrhagic Fever

No. of Cases



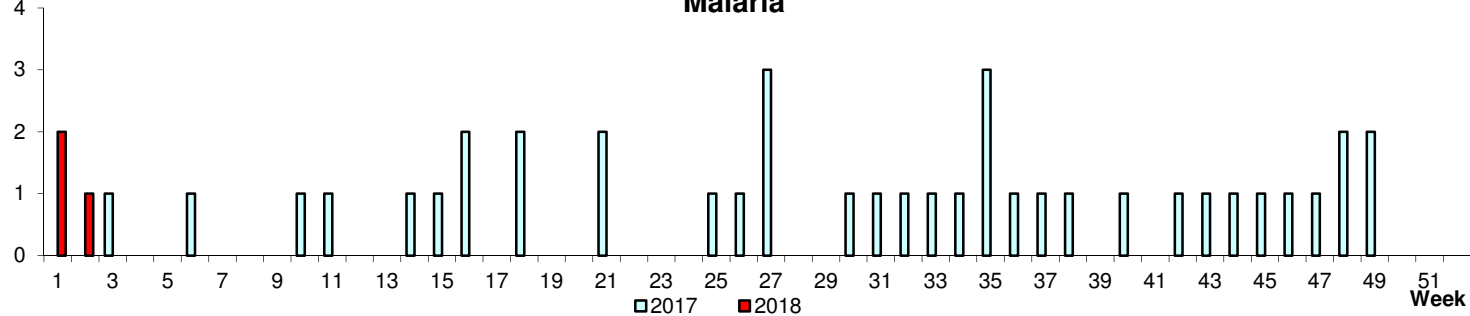
Chikungunya Fever

No. of Cases



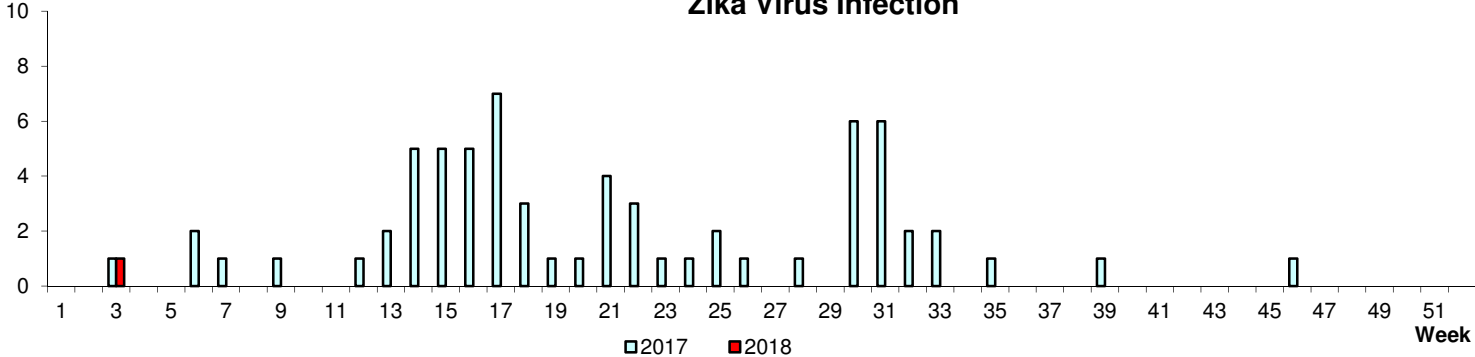
Malaria

No. of Cases



Zika Virus Infection

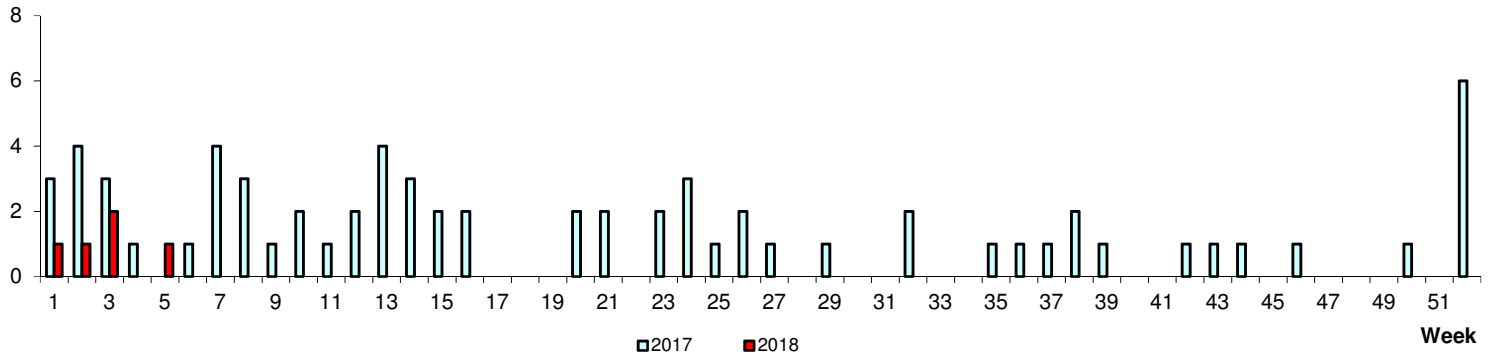
No. of Cases



WEEKLY INCIDENCE OF AIR/DROPLET-BORNE DISEASES, 2017-2018

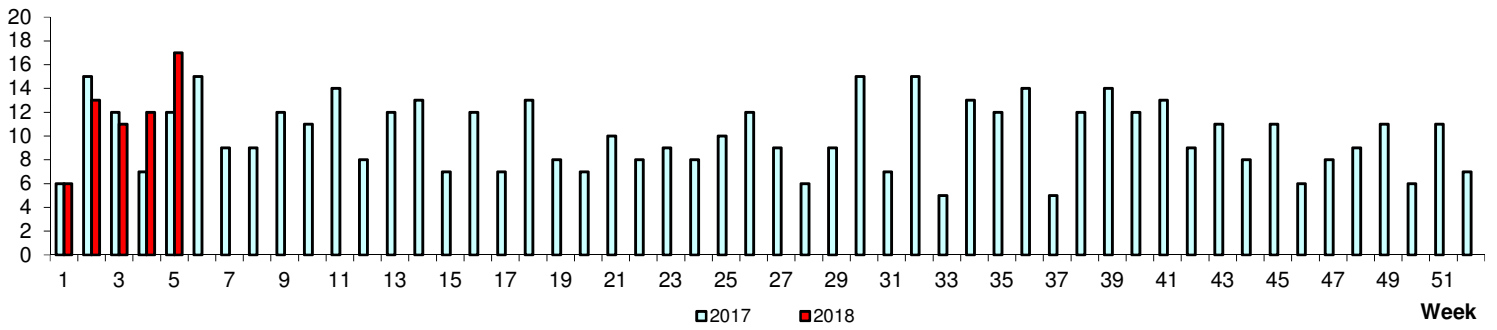
No. of Cases

Measles



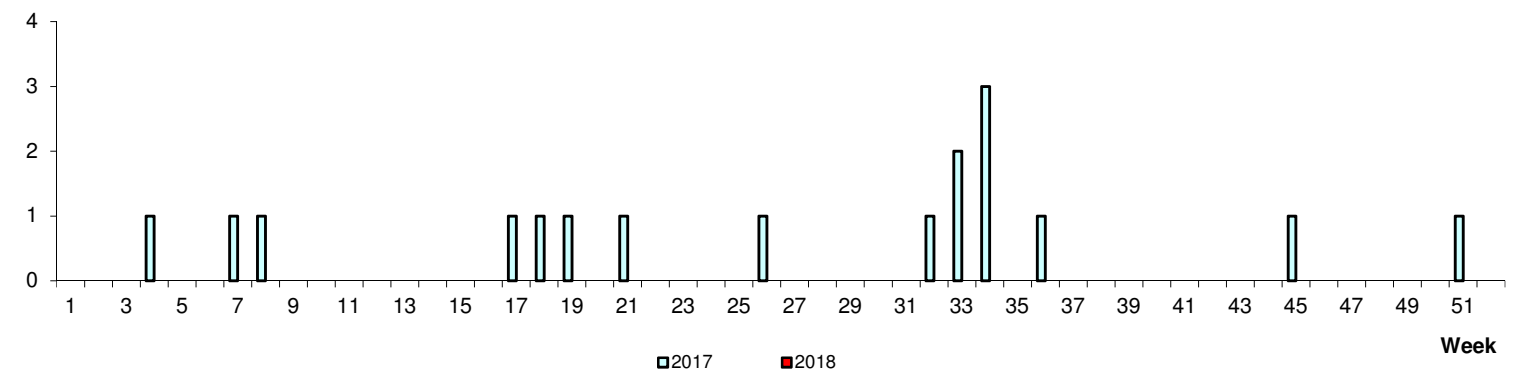
No. of Cases

Mumps



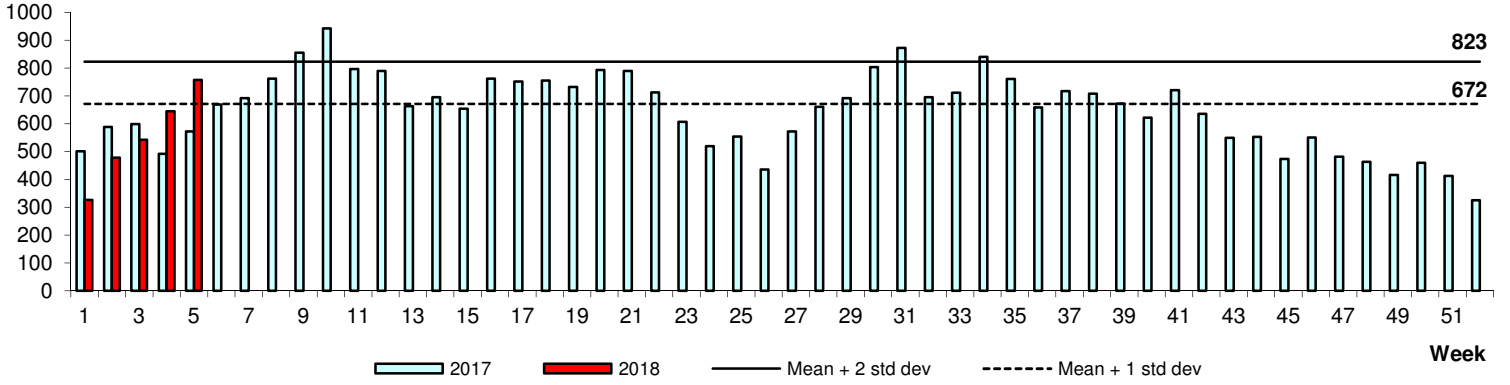
No. of Cases

Rubella



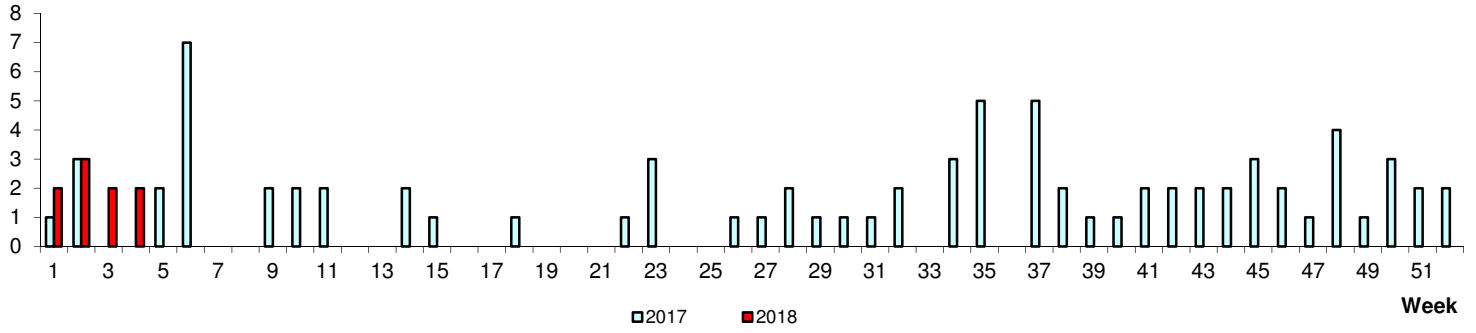
**Hand, Foot & Mouth Disease**

No. of Cases



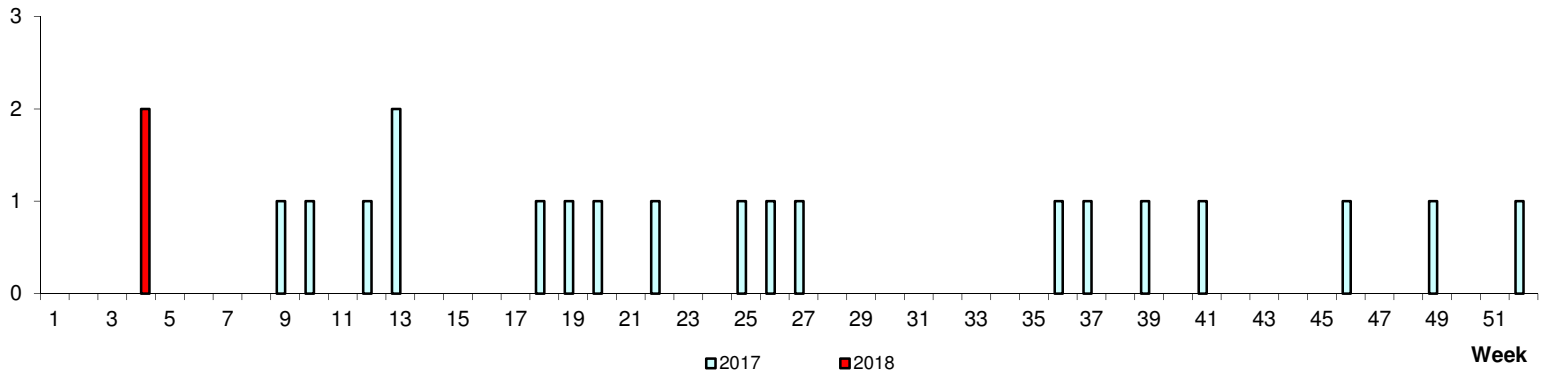
No. of Cases

**Pertussis**



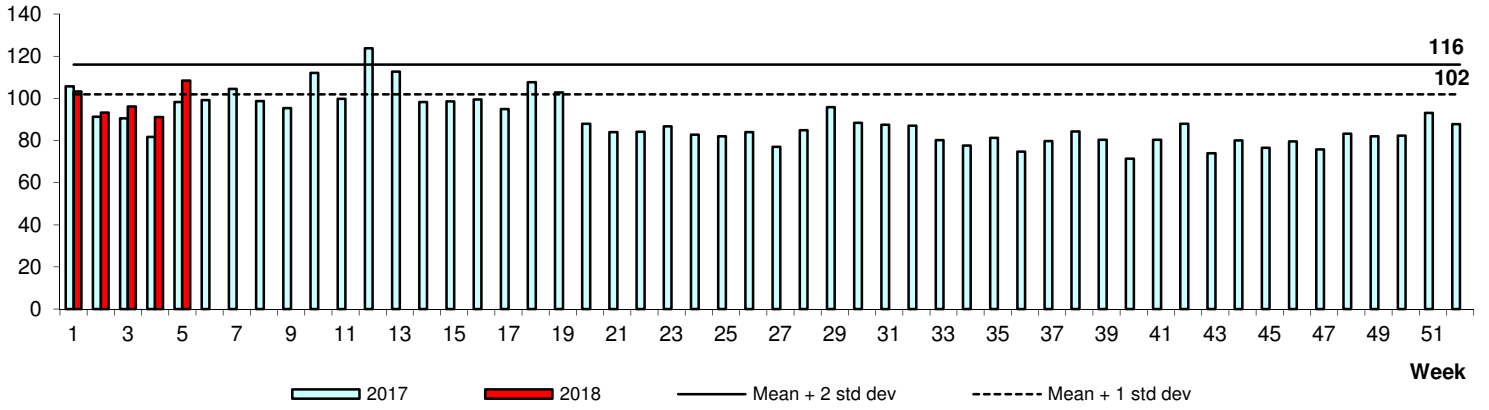
No. of Cases

**Legionellosis**



### Conjunctivitis

Average daily no.



### Diarrhoeal Illness

Average daily no.

