



WEEKLY INFECTIOUS DISEASE BULLETIN
EPIDEMIOLOGICAL WEEK 6 4 - 10 Feb 2018

	E Week 6			Cumulative first 6 Weeks		
	2018*	2017	Median 2013 -2017	2018	2017	Median 2013 -2017
FOOD/WATER-BORNE DISEASES						
Acute Hepatitis A	1	5	3	6	11	11
Acute Hepatitis E	0	0	0	2	8	6
Campylobacteriosis	4	4	5	52	45	48
Cholera	0	0	0	1	0	0
Paratyphoid	1	0	0	4	5	3
Poliomyelitis	0	0	0	0	0	0
Salmonellosis	22	33	31	167	239	188
Typhoid	1	0	0	6	18	11
VECTOR-BORNE DISEASES						
Chikungunya Fever	0	0	0	0	0	5
Dengue Fever	50	77	273	348	435	1431
Dengue Haemorrhagic Fever	0	0	0	0	2	2
Japanese Encephalitis [^]	0	0	NA	0	0	NA
Leptospirosis [^]	0	2	NA	3	6	NA
Malaria	0	1	1	3	2	2
Murine Typhus [^]	0	0	NA	0	0	NA
Nipah virus infection	0	0	0	0	0	0
Plague	0	0	0	0	0	0
Yellow Fever	0	0	0	0	0	0
Zika Virus Infection	0	2	NA	1	3	NA
AIR/DROPLET-BORNE DISEASES						
Avian Influenza	0	0	NA	0	0	NA
Diphtheria	0	0	0	0	0	0
Ebola Virus Disease	0	0	NA	0	0	NA
<i>Haemophilus influenzae</i> type b	0	0	0	0	3	0
Hand, Foot And Mouth Disease	699	669	587	3447	3421	3152
Legionellosis	0	0	0	2	0	3
Measles	0	1	0	5	12	2
Melioidosis	1	2	1	5	8	7
Meningococcal Disease	0	0	0	1	1	1
Mumps	11	15	11	70	67	62
Pertussis	4	7	0	13	13	7
Pneumococcal Disease (invasive)	2	4	3	13	16	16
Rubella	0	0	0	0	1	1
Severe acute respiratory syndrome	0	0	0	0	0	0
Tetanus [^]	0	0	0	1	0	
OTHER DISEASES						
Acute hepatitis B	0	1	1	6	7	5
Acute hepatitis C	1	0	0	1	2	1
Botulism [^]	0	0	NA	1	0	NA
MERS-CoV						
Suspect cases tested	2	NA	NA	44	41	NA
Other patients tested	1	NA	NA	18	31	NA
POLYCLINIC ATTENDANCES - AVERAGE DAILY NUMBER						
Acute upper respiratory infections	3983	3352	3200			NA
Acute conjunctivitis	114	99	94			NA
Acute Diarrhoea	560	587	490			NA
Chickenpox	18	18	NA			NA
HIV/STI/TB NOTIFICATIONS						
	2017	Dec		Cumulative 2017		
HIV/AIDS		25		399		
Legally Notifiable STIs**		670		8399		
Tuberculosis		135		1560		

* Preliminary figures, subject to revision when more information is available.

** *Wef Jan 2010, reporting has changed from all types of STIs to legally notifiable STIs, which comprise gonorrhoea, non-gonococcal urethritis, syphilis (congenital, infectious, non-infectious), chlamydia and genital herpes (first episode and recurrent).*

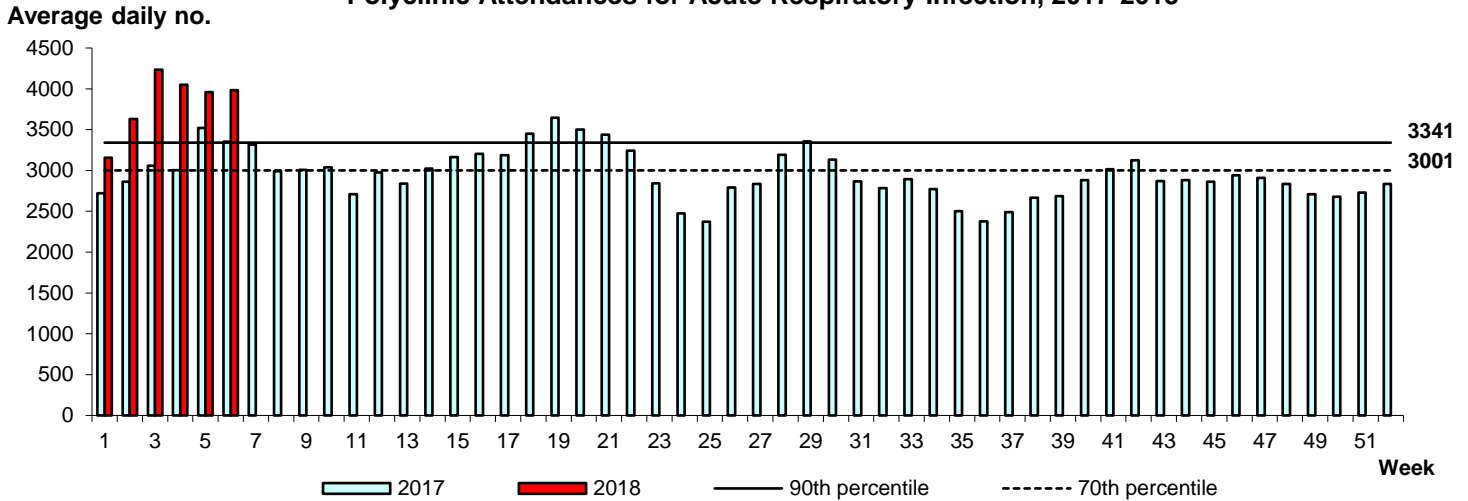
[^] Added to the list of notifiable diseases as of 28 Sep 2016

Influenza Situation in Singapore 2018

Influenza indicators for E-week 6 (4 - 10 Feb 2018) are as follows:

The average daily number of patients seeking treatment in the polyclinics for ARI increased from 3,960 (over 5.5 working days) in E-week 5 to 3,983 (over 5.5 working days) in E-week 6.

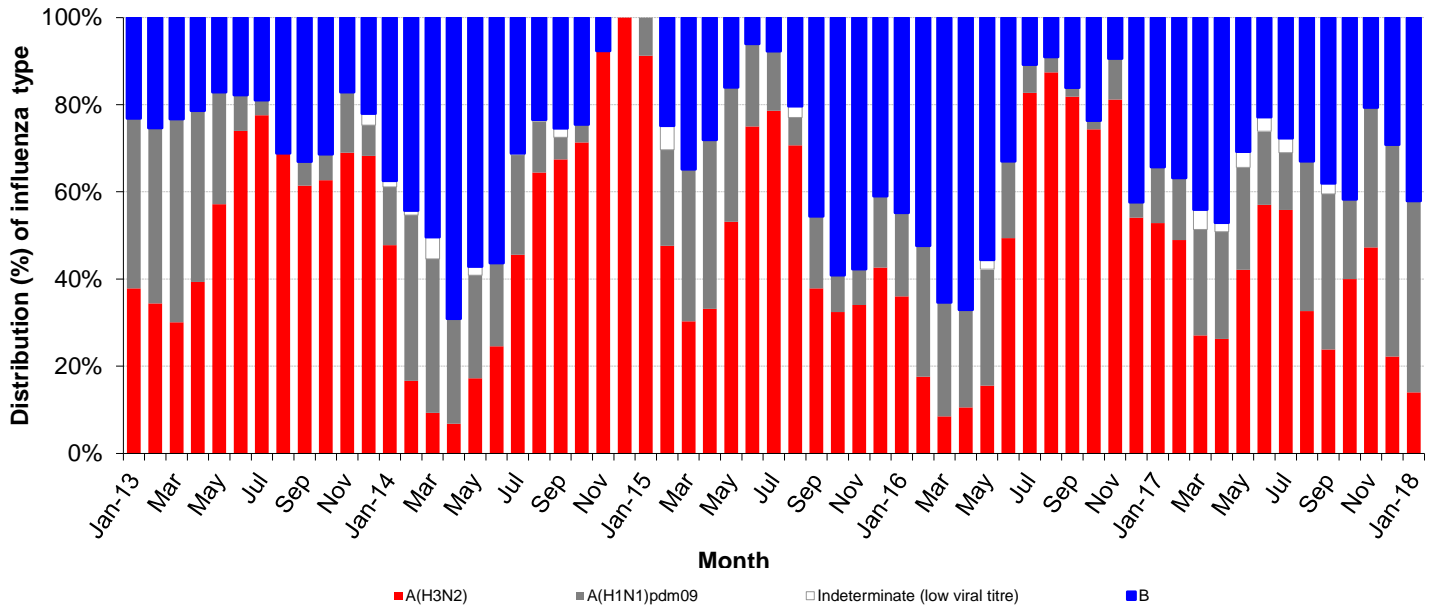
Polyclinic Attendances for Acute Respiratory Infection, 2017-2018

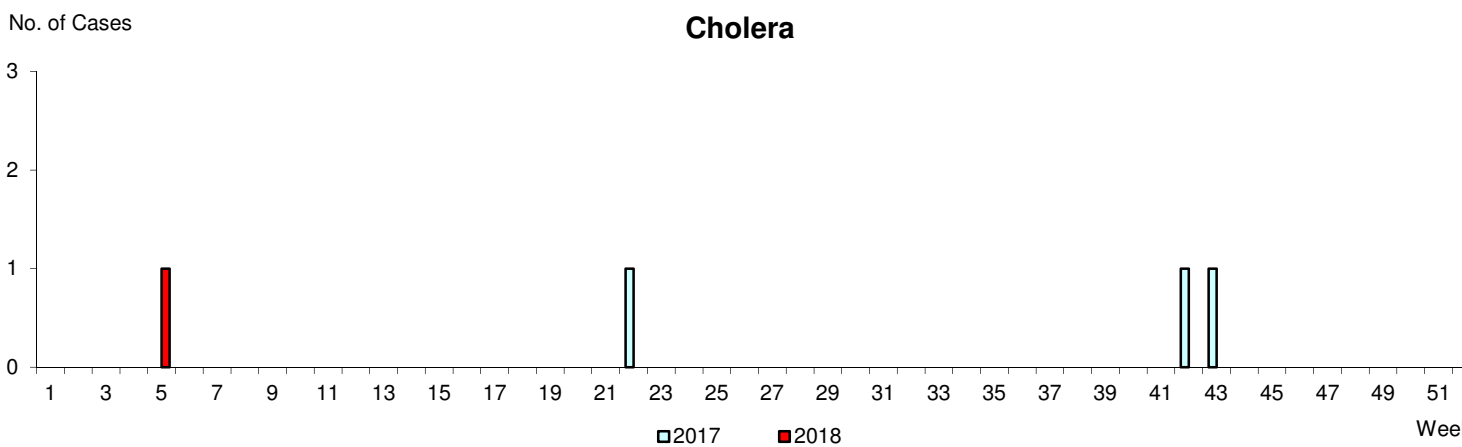
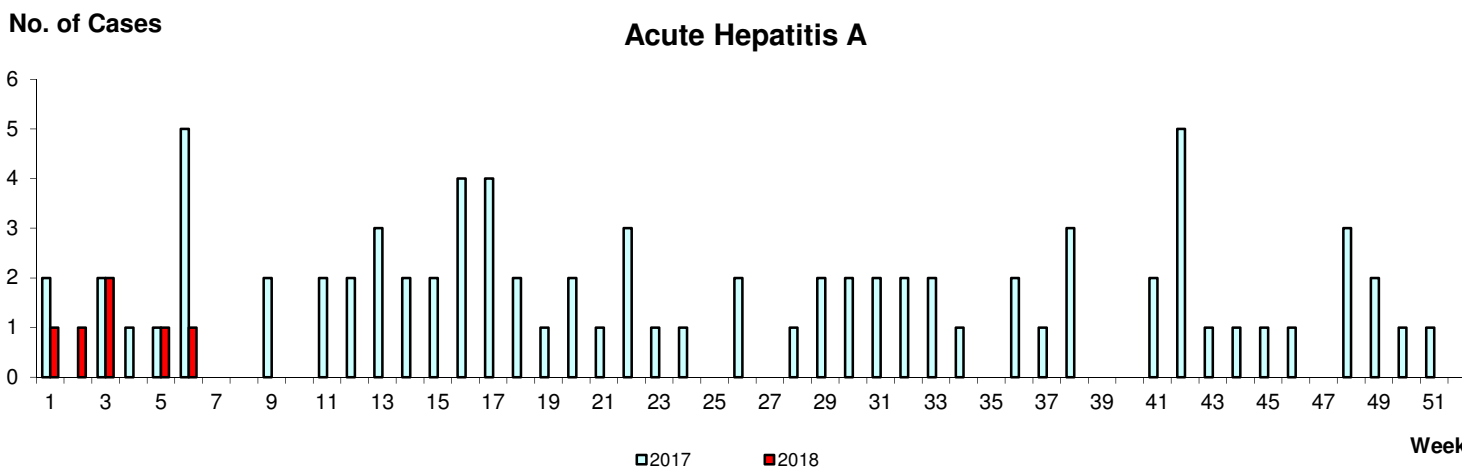
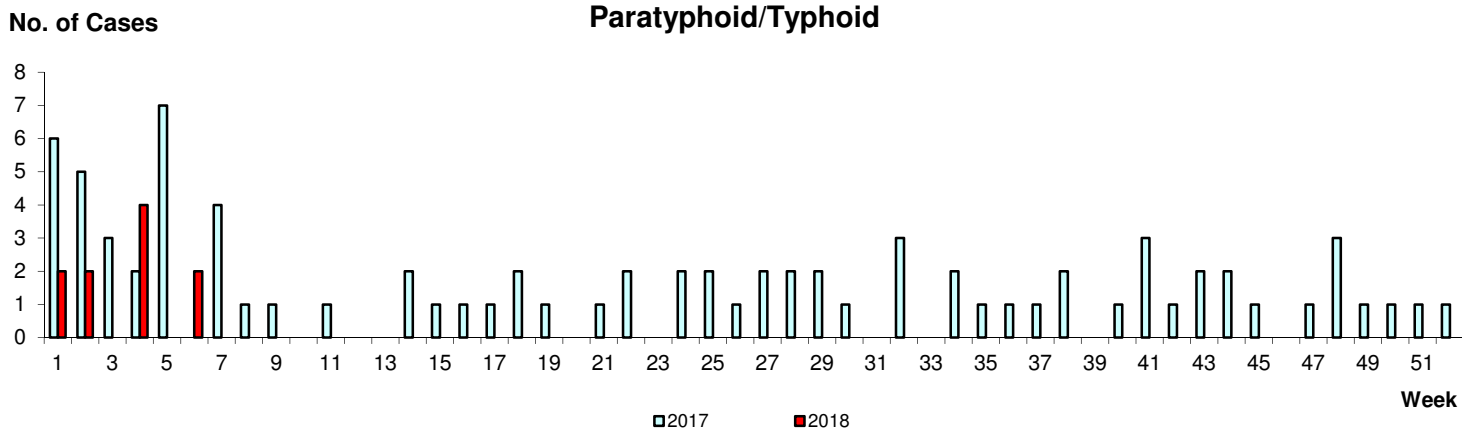


The proportion of patients with influenza-like illness (ILI) among the polyclinic attendances for ARI is 2.9%.

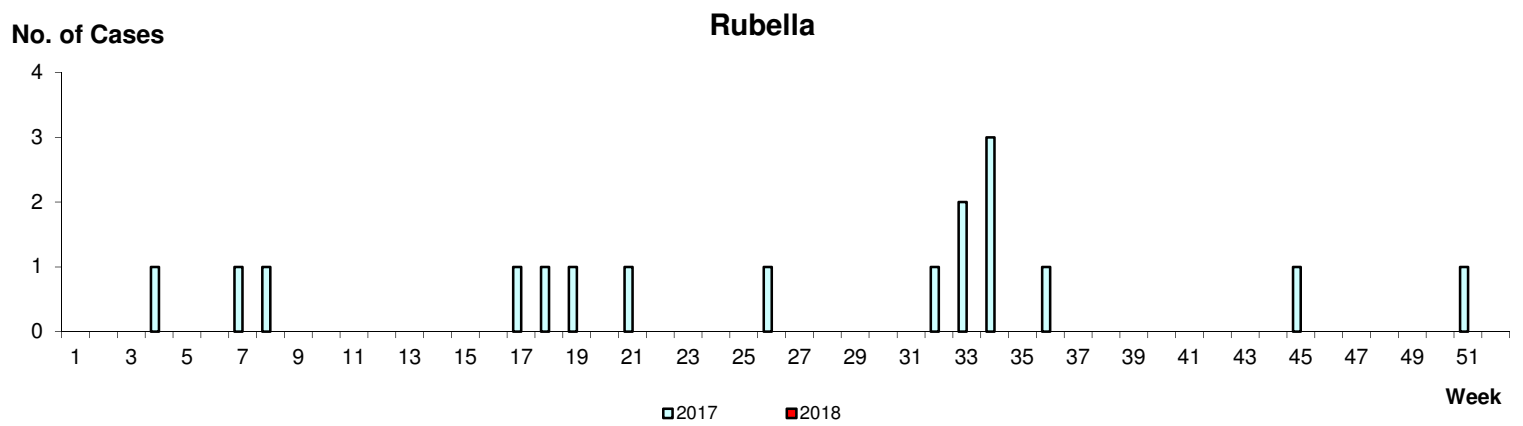
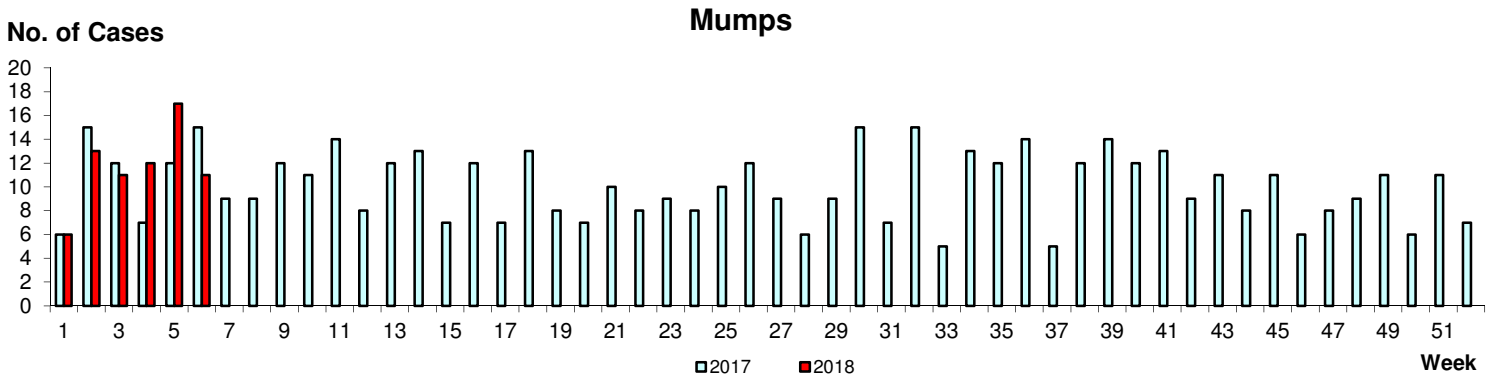
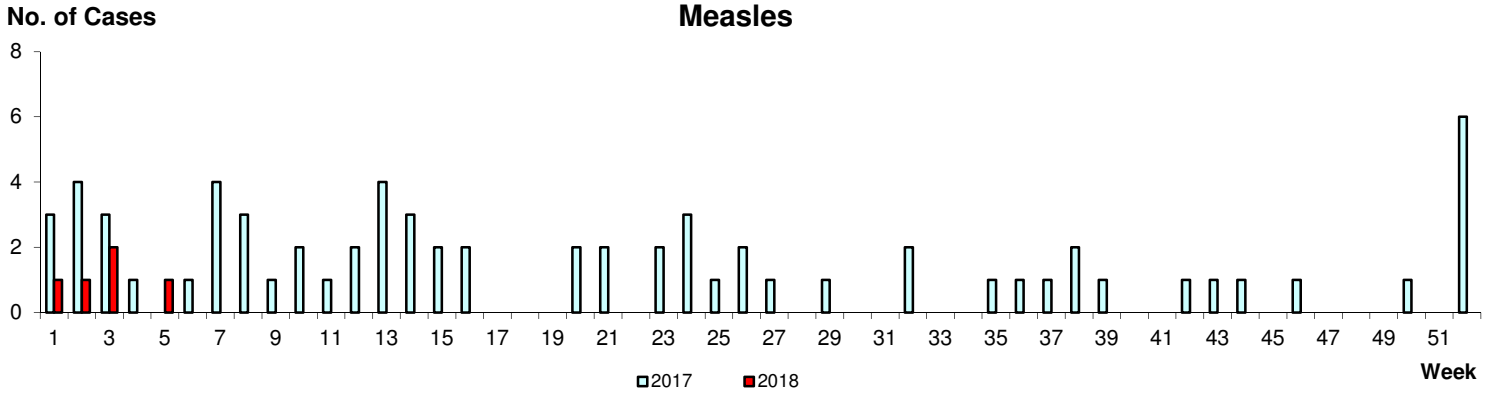
The overall positivity rate for influenza among ILI samples (n=359) in the community was 44.8% in the past 4 weeks. Of the specimens tested positive for influenza in January 2018, these were positive for influenza B (57.1%), influenza A(H1N1)pdm09 (27.9%), influenza A(H3N2) (13.6%) and influenza A (subtype indeterminate due to low viral titre) (1.4%).

Monthly Influenza Surveillance



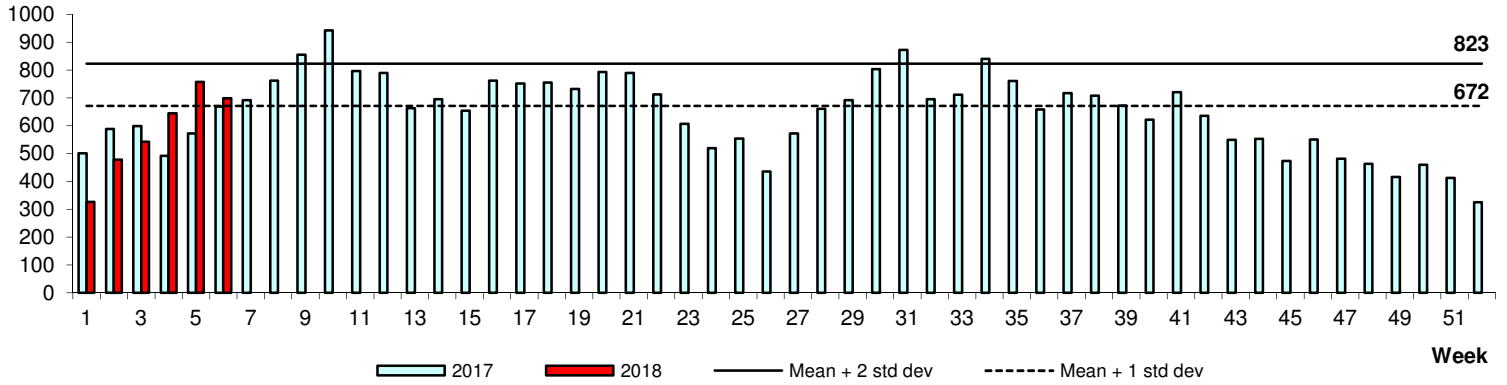


WEEKLY INCIDENCE OF AIR/DROPLET-BORNE DISEASES, 2017-2018



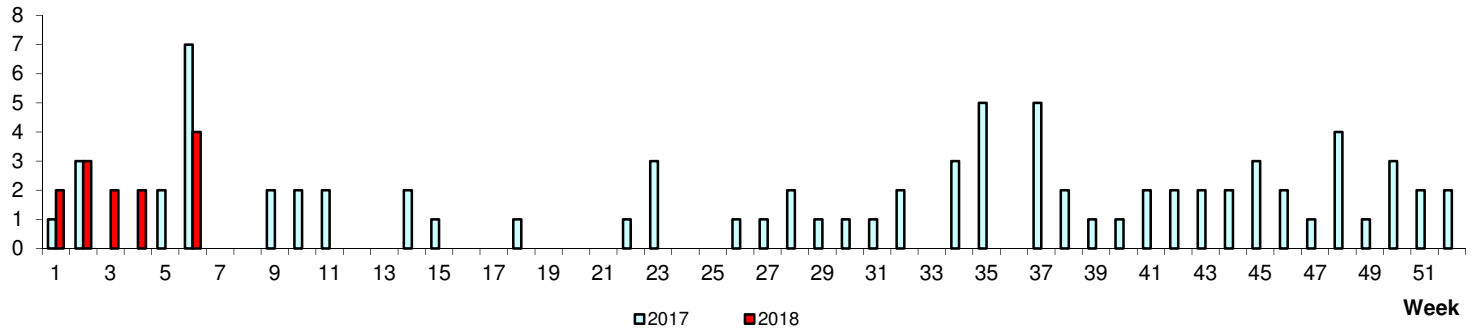
Hand, Foot & Mouth Disease

No. of Cases



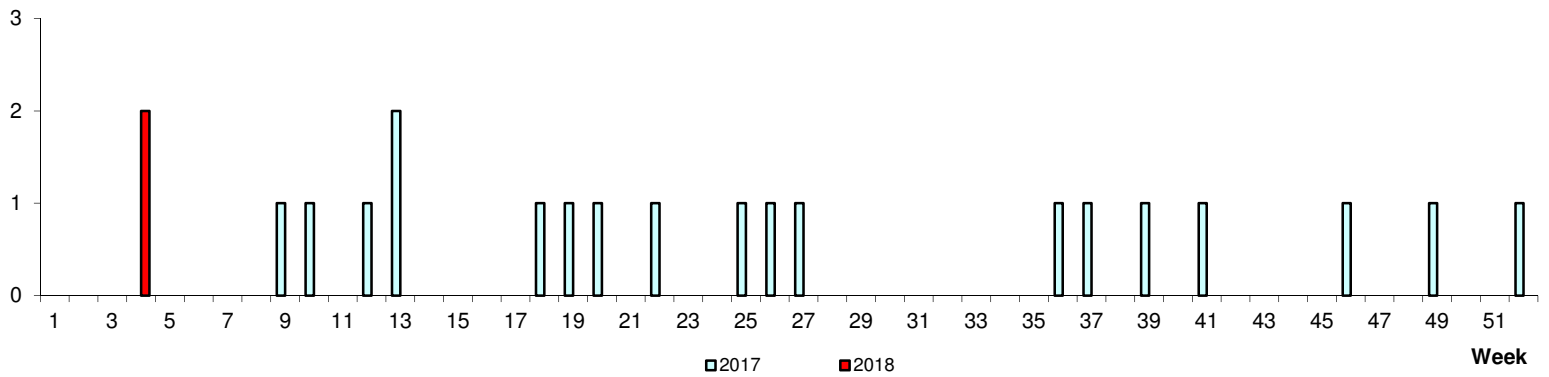
No. of Cases

Pertussis



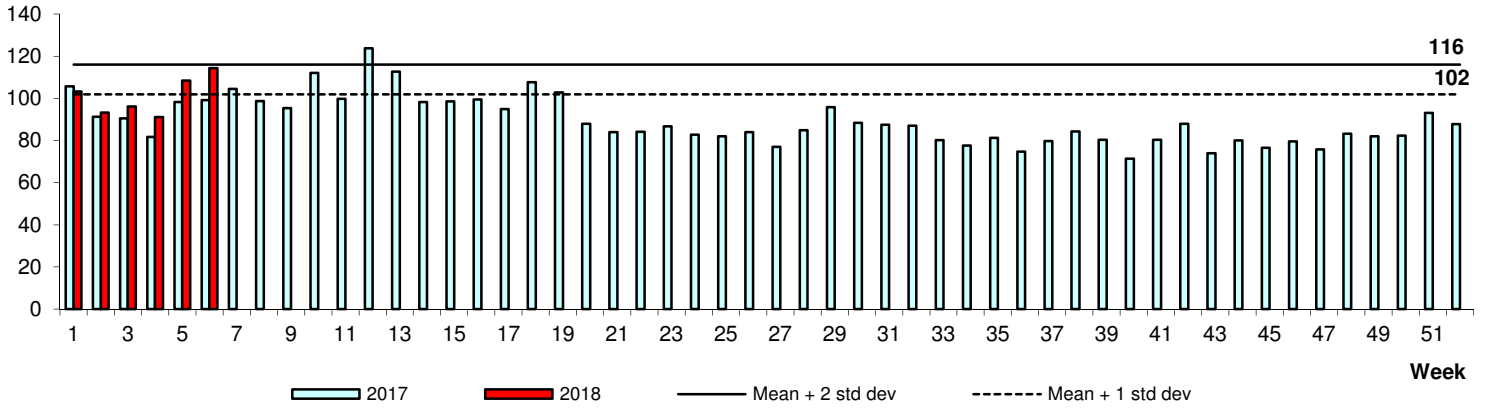
No. of Cases

Legionellosis



Conjunctivitis

Average daily no.



Average daily no.

Diarrhoeal Illness

