



WEEKLY INFECTIOUS DISEASE BULLETIN
EPIDEMIOLOGICAL WEEK 7 11 - 17 Feb 2018

	E Week 7		Median 2013 -2017	Cumulative first 7 Weeks		Median 2013 -2017
	2018*	2017		2018	2017	
FOOD/WATER-BORNE DISEASES						
Acute Hepatitis A	2	0	1	8	11	11
Acute Hepatitis E	0	0	1	2	8	8
Campylobacteriosis	4	3	5	56	48	57
Cholera	0	0	0	1	0	0
Paratyphoid	0	0	0	4	5	3
Poliomyelitis	0	0	0	0	0	0
Salmonellosis	15	25	25	182	264	212
Typhoid	0	4	1	6	22	12
VECTOR-BORNE DISEASES						
Chikungunya Fever	0	0	1	0	0	5
Dengue Fever	28	51	246	376	486	1677
Dengue Haemorrhagic Fever	0	2	1	0	4	4
Japanese Encephalitis [^]	0	0	NA	0	0	NA
Leptospirosis [^]	1	2	NA	4	8	NA
Malaria	0	0	0	3	2	2
Murine Typhus [^]	0	0	NA	0	0	NA
Nipah virus infection	0	0	0	0	0	0
Plague	0	0	0	0	0	0
Yellow Fever	0	0	0	0	0	0
Zika Virus Infection	0	1	NA	1	4	NA
AIR/DROPLET-BORNE DISEASES						
Avian Influenza	0	0	NA	0	0	NA
Diphtheria	0	0	0	0	0	0
Ebola Virus Disease	0	0	NA	0	0	NA
<i>Haemophilus influenzae</i> type b	0	0	0	0	3	0
Hand, Foot And Mouth Disease	546	692	417	3993	4113	3569
Legionellosis	0	0	0	2	0	3
Measles	2	4	2	7	16	3
Melioidosis	0	2	1	5	10	7
Meningococcal Disease	0	1	0	1	2	1
Mumps	2	9	9	72	76	72
Pertussis	2	0	0	15	13	8
Pneumococcal Disease (invasive)	3	2	3	16	18	18
Rubella	0	1	1	0	2	2
Severe acute respiratory syndrome	0	0	0	0	0	0
Tetanus [^]	0	0	0	1	0	
OTHER DISEASES						
Acute hepatitis B	0	1	0	6	8	5
Acute hepatitis C	0	1	0	1	3	1
Botulism [^]	0	0	NA	1	0	NA
MERS-CoV						
Suspect cases tested	2	NA	NA	44	41	NA
Other patients tested	1	NA	NA	18	31	NA
POLYCLINIC ATTENDANCES - AVERAGE DAILY NUMBER						
Acute upper respiratory infections	3911	3316	3033			NA
Acute conjunctivitis	109	105	100			NA
Acute Diarrhoea	543	561	538			NA
Chickenpox	16	17	NA			NA
HIV/STI/TB NOTIFICATIONS						
	2017	Dec		Cumulative 2017		
HIV/AIDS		25		399		
Legally Notifiable STIs**		670		8399		
Tuberculosis		135		1560		

* Preliminary figures, subject to revision when more information is available.

** *Wef Jan 2010, reporting has changed from all types of STIs to legally notifiable STIs, which comprise gonorrhoea, non-gonococcal urethritis, syphilis (congenital, infectious, non-infectious), chlamydia and genital herpes (first episode and recurrent).*

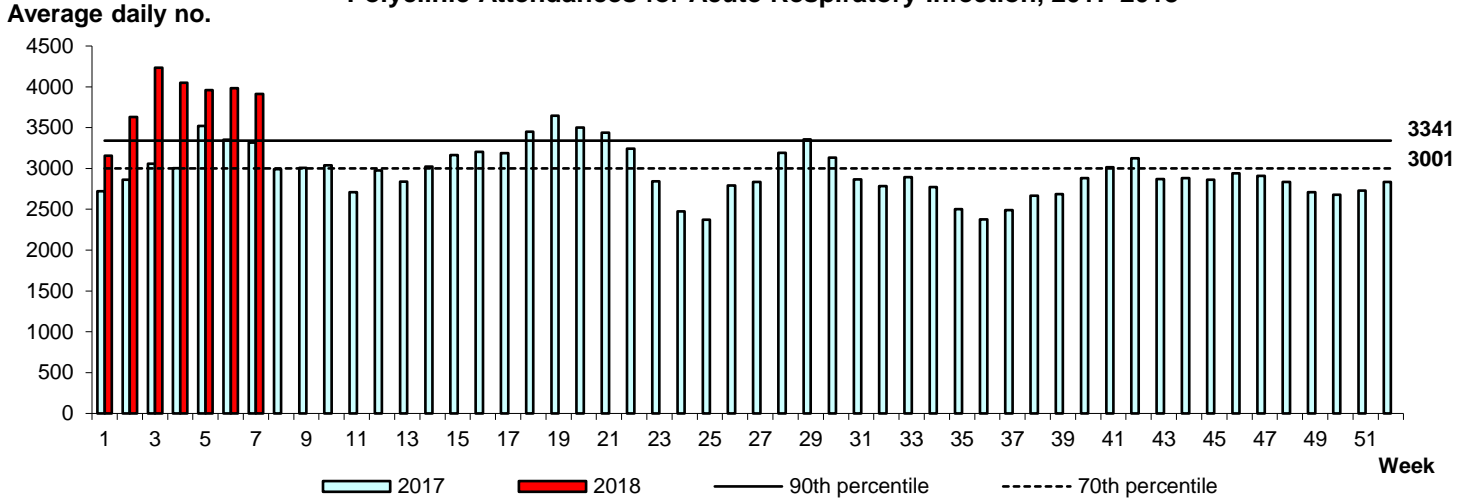
[^] Added to the list of notifiable diseases as of 28 Sep 2016

Influenza Situation in Singapore 2018

Influenza indicators for E-week 7 (11 - 17 Feb 2018) are as follows:

The average daily number of patients seeking treatment in the polyclinics for ARI decreased from 3,983 (over 5.5 working days) in E-week 6 to 3,911 (over 3.5 working days) in E-week 7.

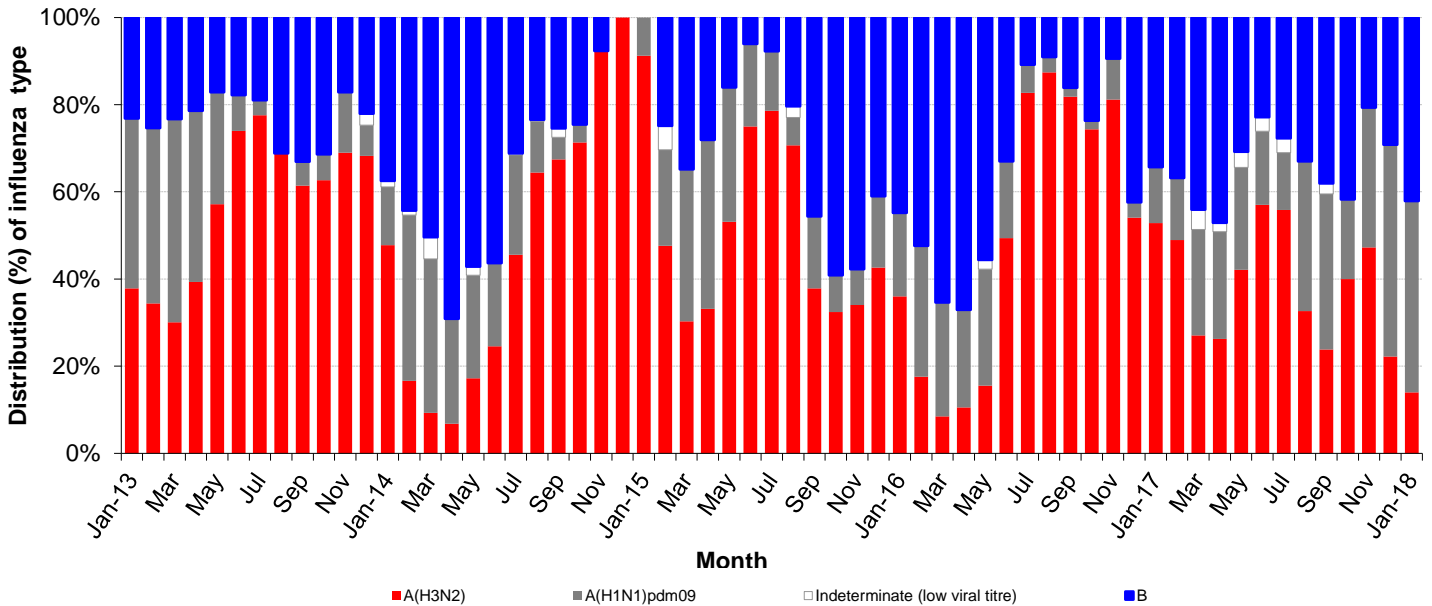
Polyclinic Attendances for Acute Respiratory Infection, 2017-2018



The proportion of patients with influenza-like illness (ILI) among the polyclinic attendances for ARI is 2.3%.

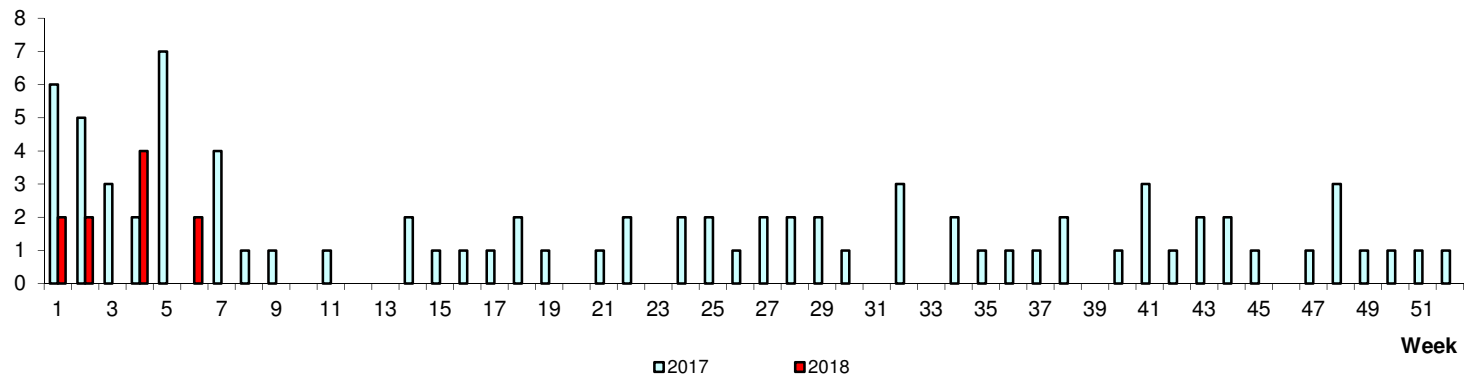
The overall positivity rate for influenza among ILI samples (n=385) in the community was 43.1% in the past 4 weeks. Of the specimens tested positive for influenza in January 2018, these were positive for influenza B (57.1%), influenza A(H1N1)pdm09 (27.9%), influenza A(H3N2) (13.6%) and influenza A (subtype indeterminate due to low viral titre) (1.4%).

Monthly Influenza Surveillance



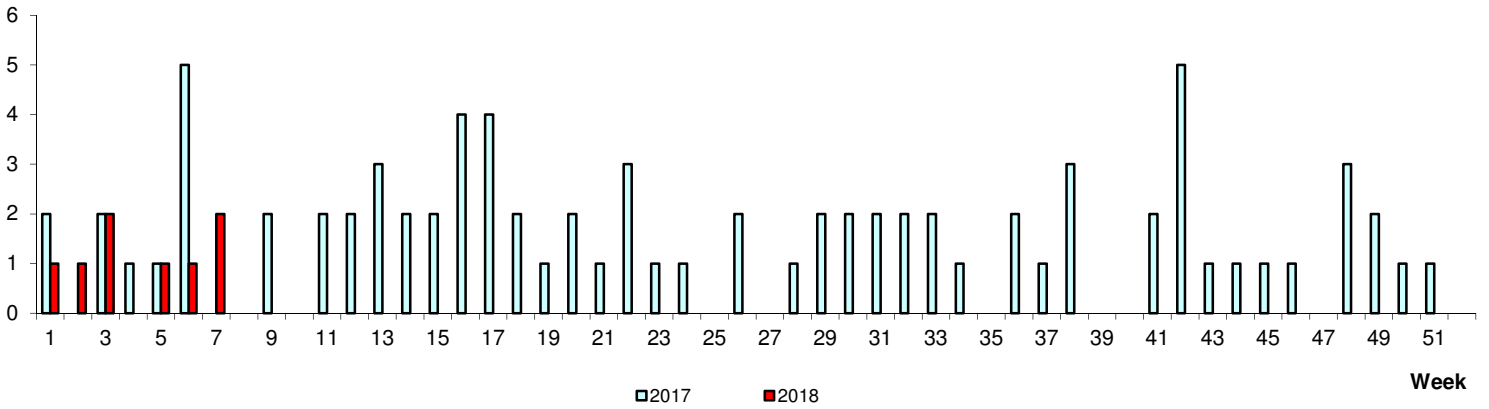
No. of Cases

Paratyphoid/Typhoid



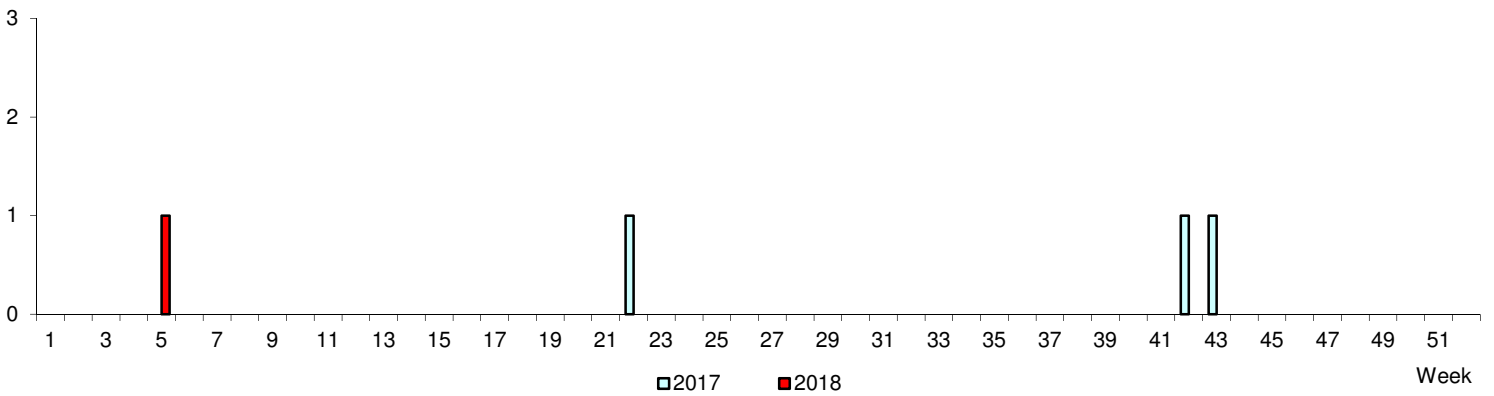
No. of Cases

Acute Hepatitis A



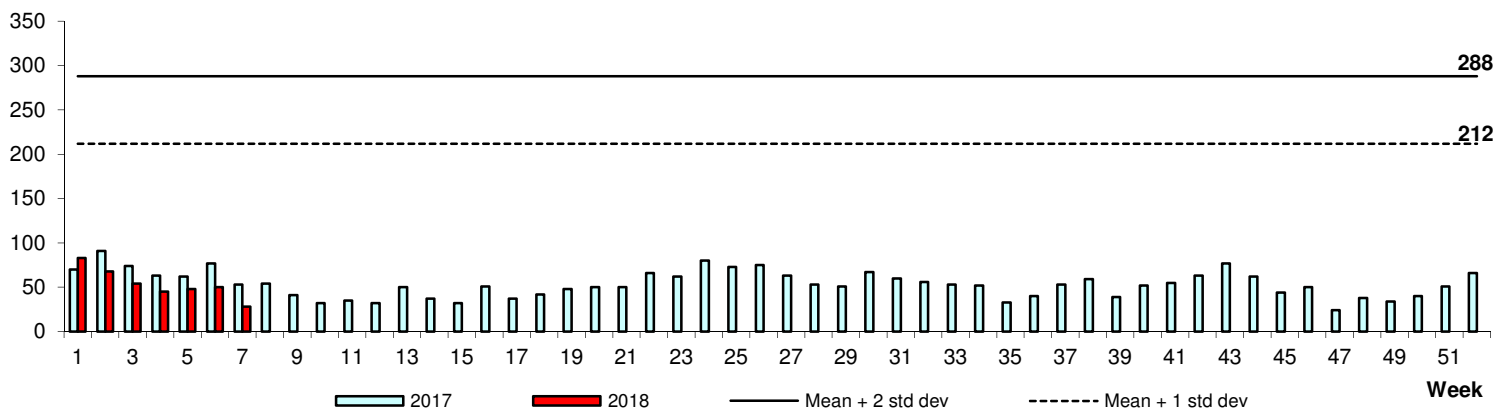
No. of Cases

Cholera



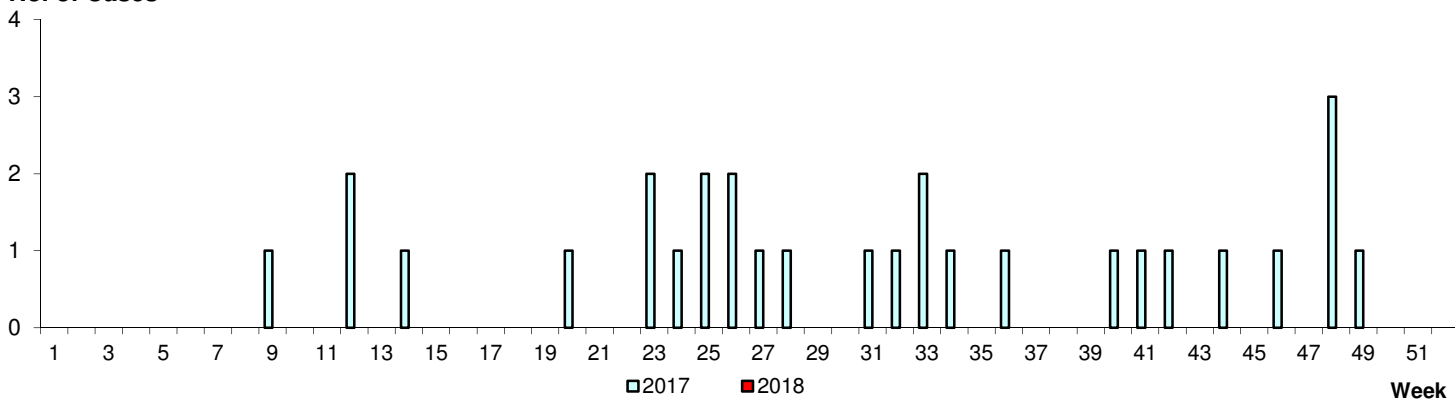
Dengue Fever/Dengue Haemorrhagic Fever

No. of Cases



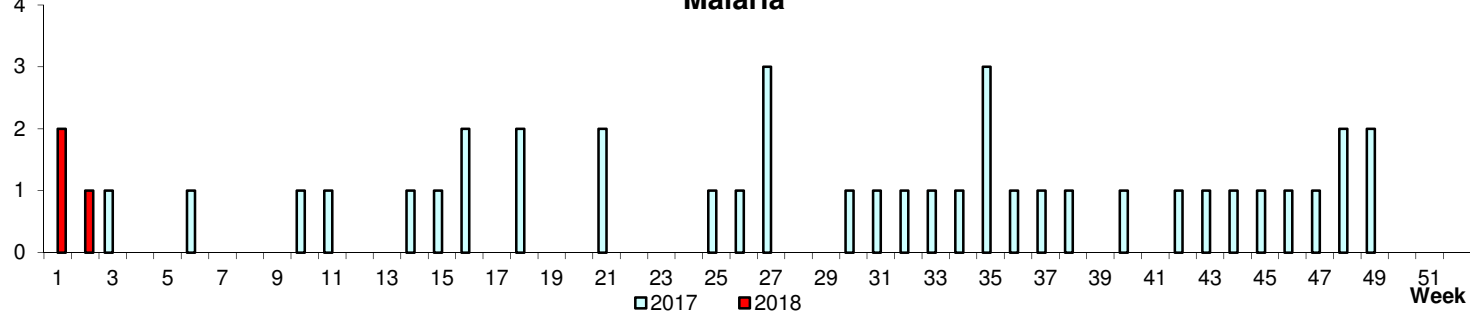
Chikungunya Fever

No. of Cases



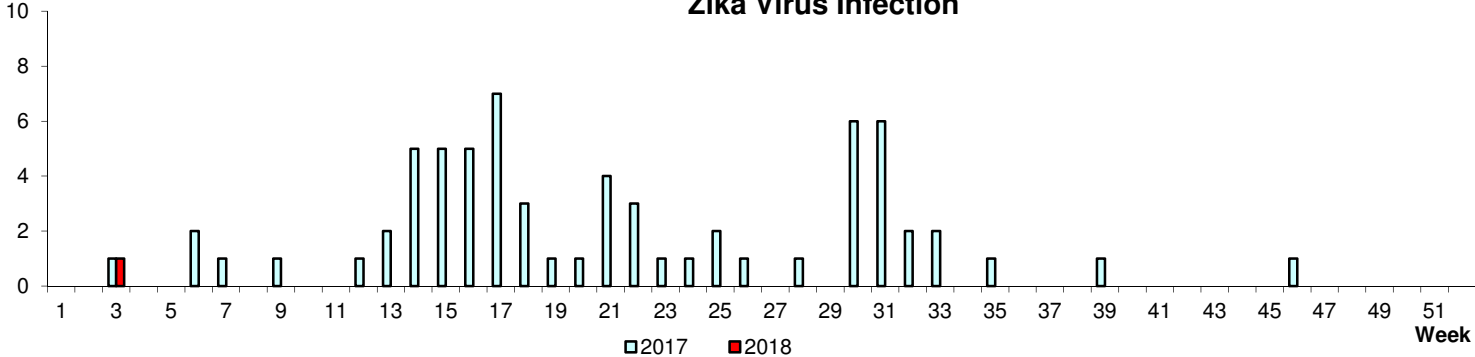
Malaria

No. of Cases



Zika Virus Infection

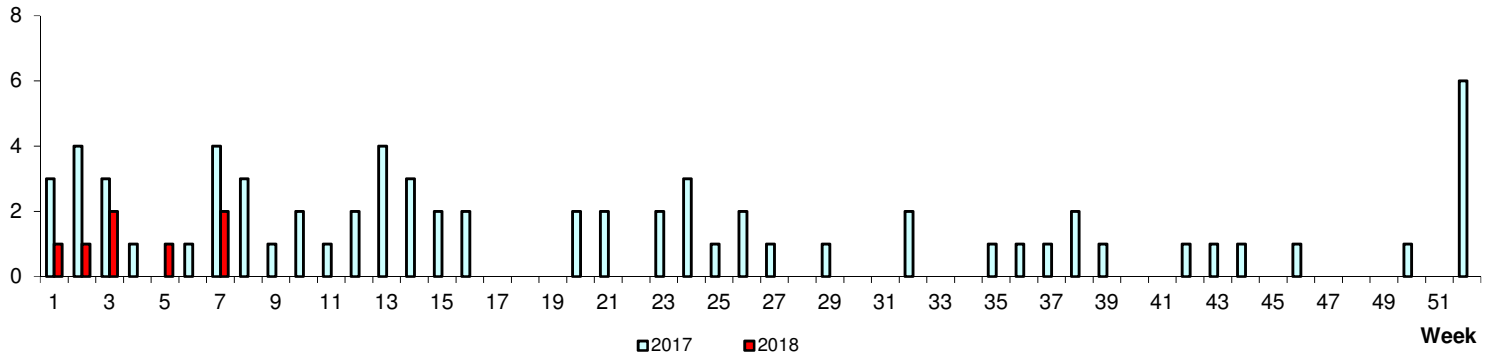
No. of Cases



WEEKLY INCIDENCE OF AIR/DROPLET-BORNE DISEASES, 2017-2018

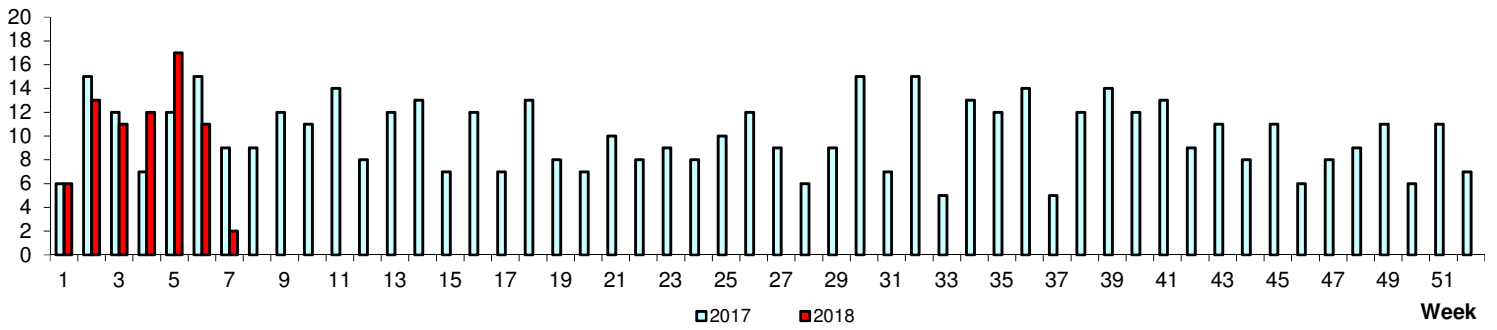
No. of Cases

Measles



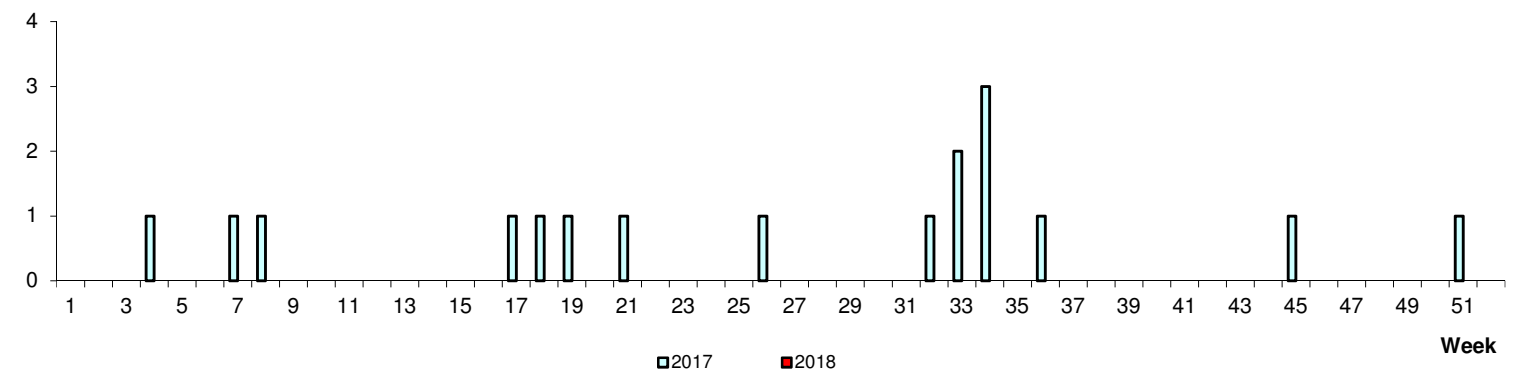
No. of Cases

Mumps



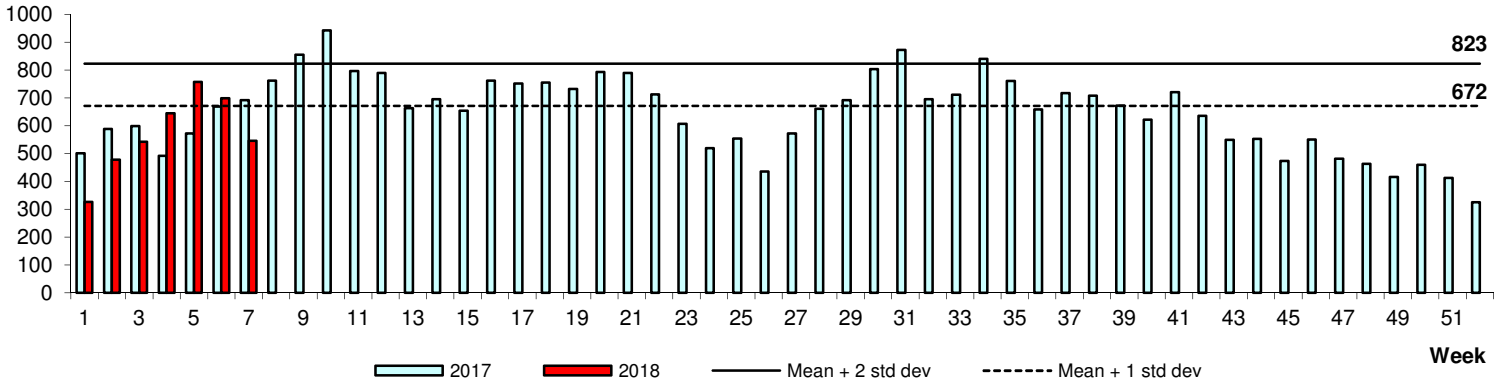
No. of Cases

Rubella



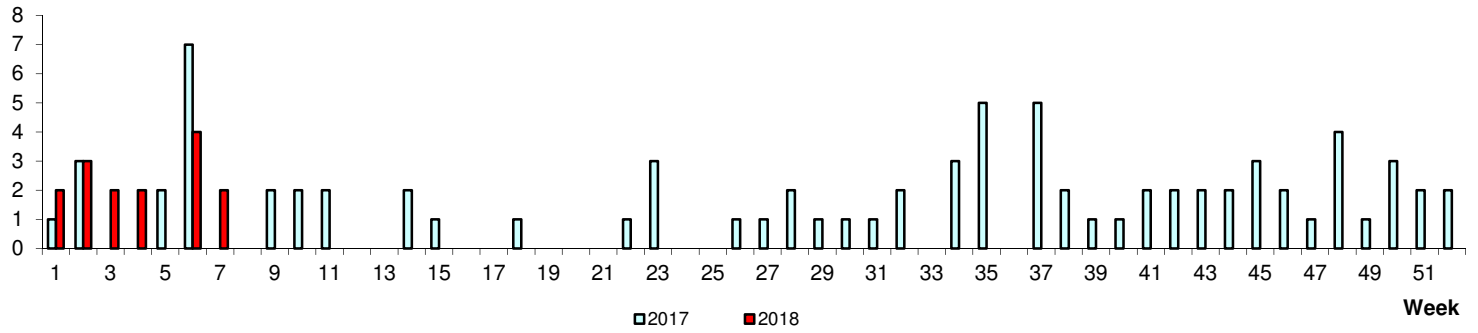
Hand, Foot & Mouth Disease

No. of Cases



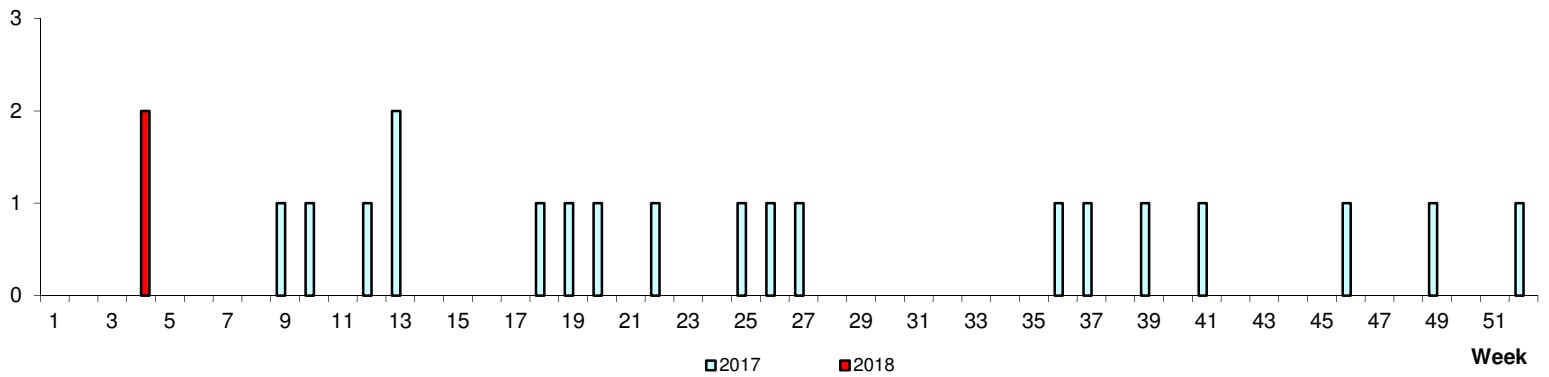
No. of Cases

Pertussis



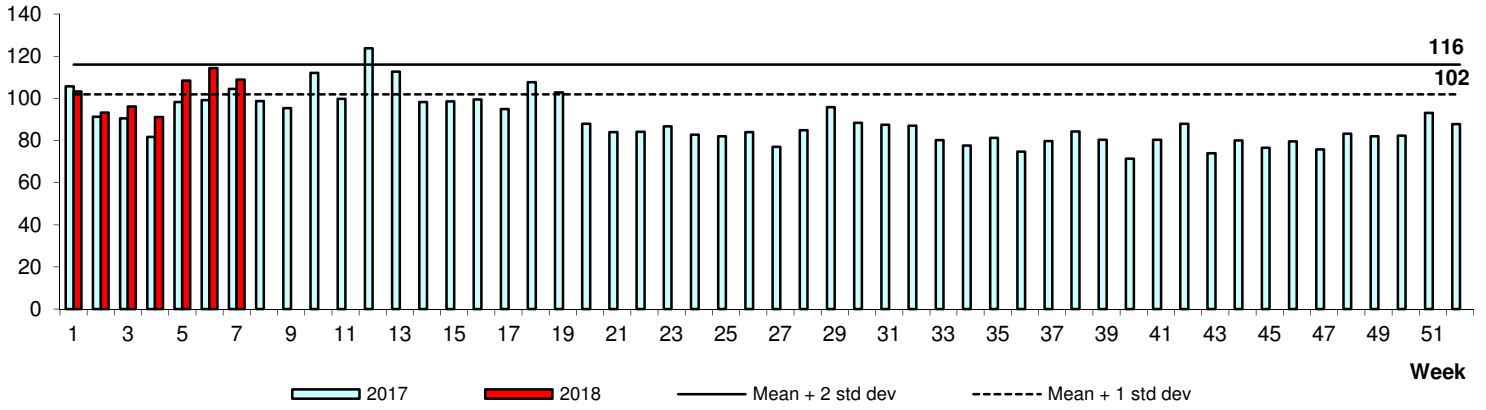
No. of Cases

Legionellosis



Conjunctivitis

Average daily no.



Average daily no.

Diarrhoeal Illness

