



WEEKLY INFECTIOUS DISEASE BULLETIN  
EPIDEMIOLOGICAL WEEK 8 18 - 24 Feb 2018

	E Week 8			Cumulative first 8 Weeks		
	2018*	2017	Median 2013 -2017	2018	2017	Median 2013 -2017
<b>FOOD/WATER-BORNE DISEASES</b>						
Acute Hepatitis A	2	0	1	10	11	13
Acute Hepatitis E	0	0	0	2	8	8
Campylobacteriosis	8	10	13	64	58	71
Cholera	0	0	0	1	0	0
Paratyphoid	0	1	0	4	6	4
Poliomyelitis	0	0	0	0	0	0
Salmonellosis	14	46	30	196	310	242
Typhoid	2	0	0	8	22	12
<b>VECTOR-BORNE DISEASES</b>						
Chikungunya Fever	0	0	0	0	0	5
Dengue Fever	38	54	193	414	540	1971
Dengue Haemorrhagic Fever	1	0	1	1	4	4
Japanese Encephalitis <sup>^</sup>	0	0	NA	0	0	NA
Leptospirosis <sup>^</sup>	1	0	NA	5	8	NA
Malaria	1	0	0	4	2	2
Murine Typhus <sup>^</sup>	0	0	NA	0	0	NA
Nipah virus infection	0	0	0	0	0	0
Plague	0	0	0	0	0	0
Yellow Fever	0	0	0	0	0	0
Zika Virus Infection	0	0	NA	1	4	NA
<b>AIR/DROPLET-BORNE DISEASES</b>						
Avian Influenza	0	0	NA	0	0	NA
Diphtheria	0	0	0	0	0	0
Ebola Virus Disease	0	0	NA	0	0	NA
<i>Haemophilus influenzae</i> type b	0	0	0	0	3	0
Hand, Foot And Mouth Disease	670	762	573	4663	4875	4142
Legionellosis	0	0	0	2	0	3
Measles	0	3	2	7	19	5
Melioidosis	1	0	0	6	10	9
Meningococcal Disease	0	0	0	1	2	1
Mumps	8	9	10	80	85	81
Pertussis	1	0	0	16	13	9
Pneumococcal Disease (invasive)	4	6	4	20	24	23
Rubella	0	1	1	0	3	3
Severe acute respiratory syndrome	0	0	0	0	0	0
Tetanus <sup>^</sup>	0	0	0	1	0	
<b>OTHER DISEASES</b>						
Acute hepatitis B	0	2	1	6	10	5
Acute hepatitis C	1	1	0	2	4	3
Botulism <sup>^</sup>	0	0	NA	1	0	NA
<b>MERS-CoV</b>						
Suspect cases tested	2	NA	NA	44	41	NA
Other patients tested	1	NA	NA	18	31	NA
<b>POLYCLINIC ATTENDANCES - AVERAGE DAILY NUMBER</b>						
Acute upper respiratory infections	3513	2993	2942			NA
Acute conjunctivitis	117	99	99			NA
Acute Diarrhoea	585	536	510			NA
Chickenpox	18	18	NA			NA
<b>HIV/STI/TB NOTIFICATIONS</b>						
	2017	Dec		Cumulative 2017		
HIV/AIDS		25		399		
Legally Notifiable STIs**		670		8399		
Tuberculosis		135		1560		

\* Preliminary figures, subject to revision when more information is available.

\*\* *Wef Jan 2010, reporting has changed from all types of STIs to legally notifiable STIs, which comprise gonorrhoea, non-gonococcal urethritis, syphilis (congenital, infectious, non-infectious), chlamydia and genital herpes (first episode and recurrent).*

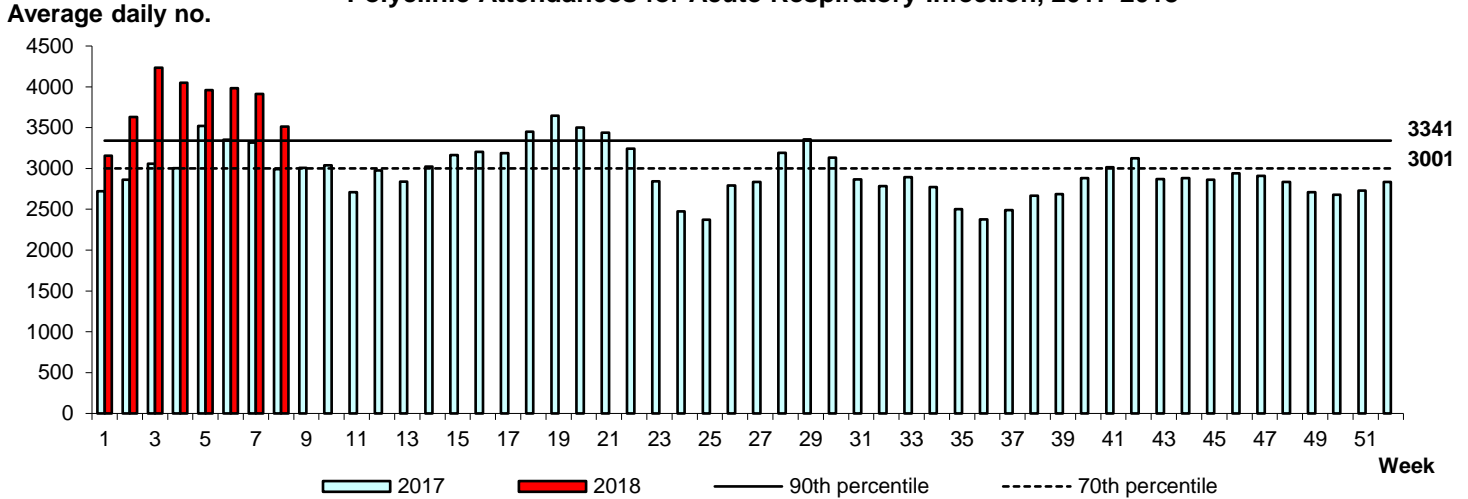
<sup>^</sup> Added to the list of notifiable diseases as of 28 Sep 2016

## Influenza Situation in Singapore 2018

Influenza indicators for E-week 8 (18 - 24 Feb 2018) are as follows:

The average daily number of patients seeking treatment in the polyclinics for ARI decreased from 3,911 (over 3.5 working days) in E-week 7 to 3,513 (over 5.5 working days) in E-week 8.

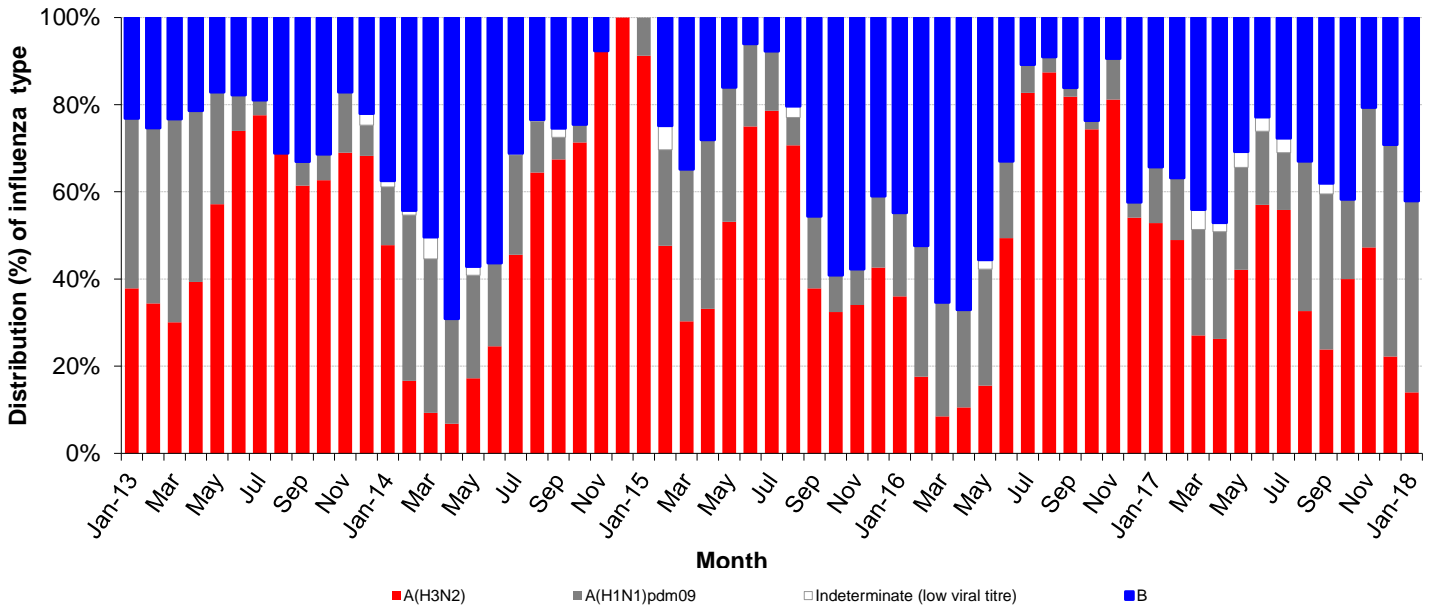
### Polyclinic Attendances for Acute Respiratory Infection, 2017-2018

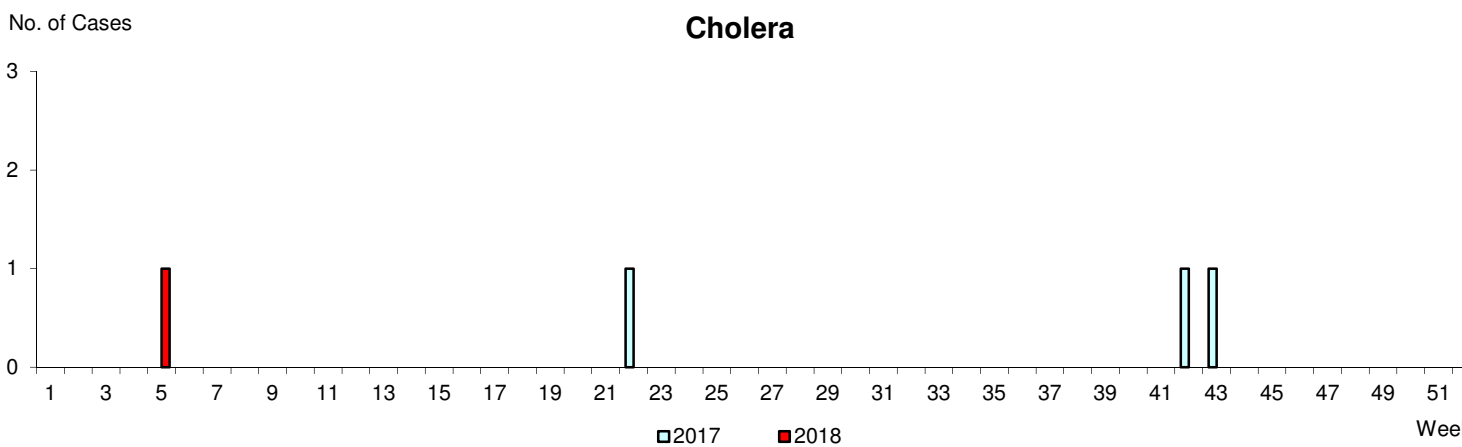
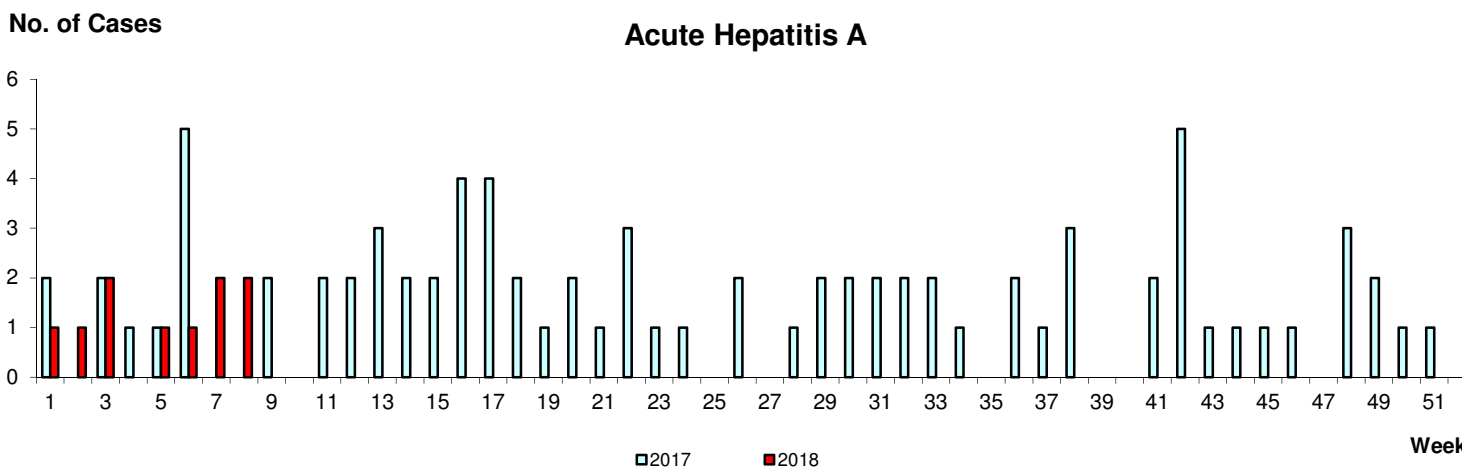
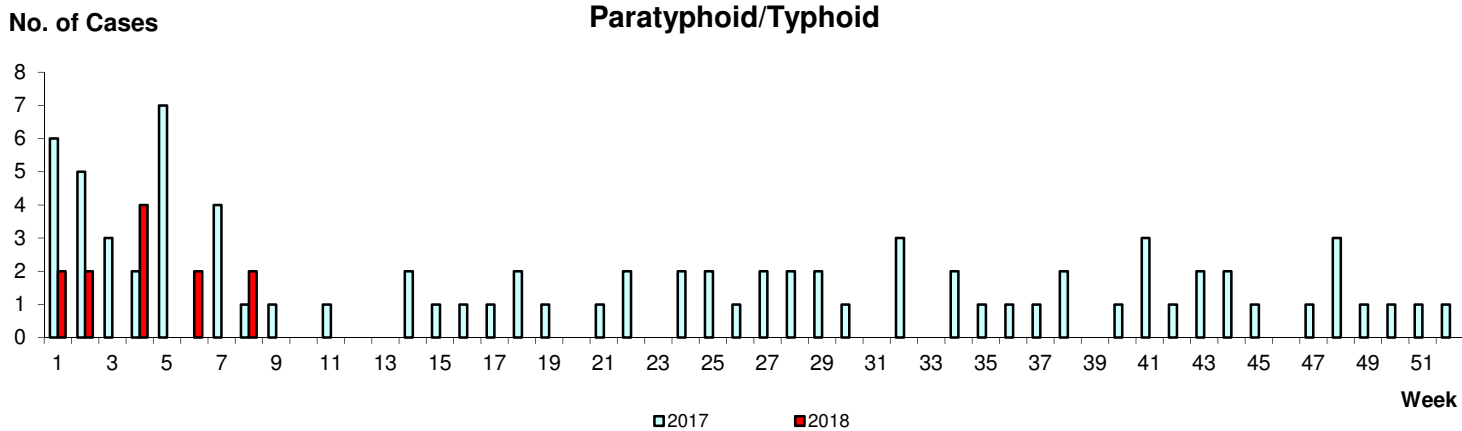


The proportion of patients with influenza-like illness (ILI) among the polyclinic attendances for ARI is 1.9%.

The overall positivity rate for influenza among ILI samples (n=370) in the community was 39.7% in the past 4 weeks. Of the specimens tested positive for influenza in January 2018, these were positive for influenza B (57.1%), influenza A(H1N1)pdm09 (27.9%), influenza A(H3N2) (13.6%) and influenza A (subtype indeterminate due to low viral titre) (1.4%).

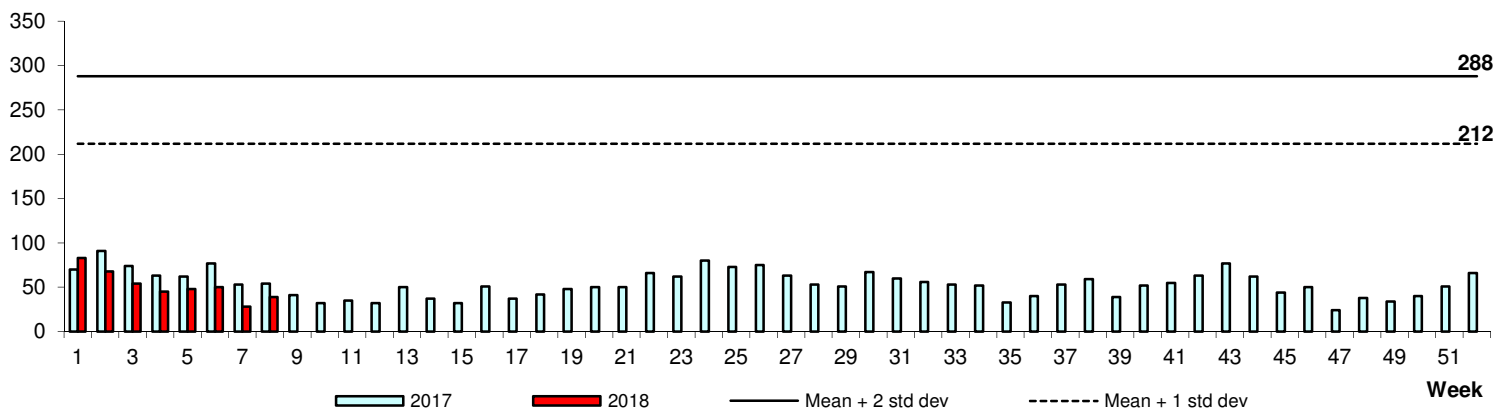
### Monthly Influenza Surveillance





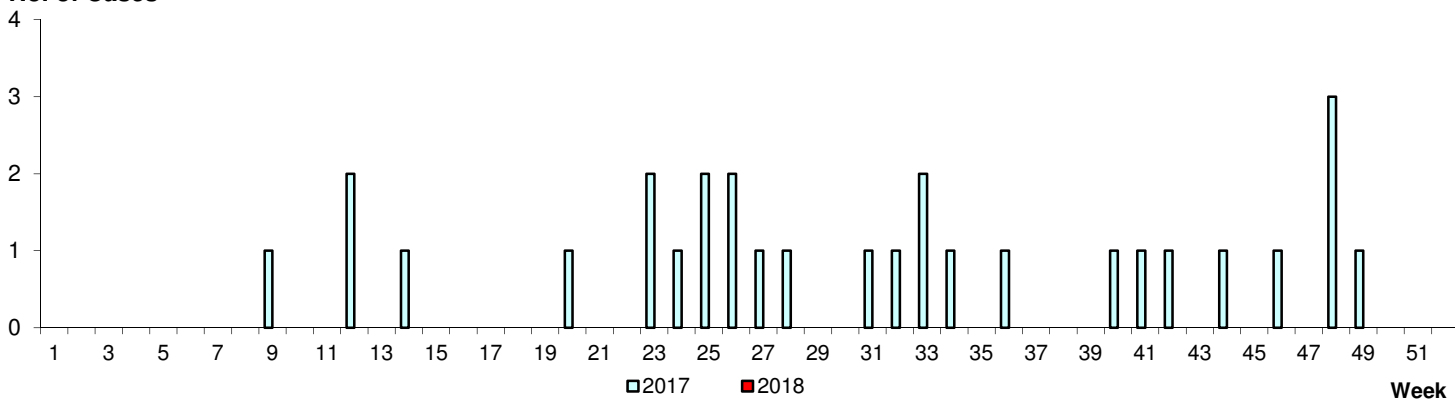
Dengue Fever/Dengue Haemorrhagic Fever

No. of Cases



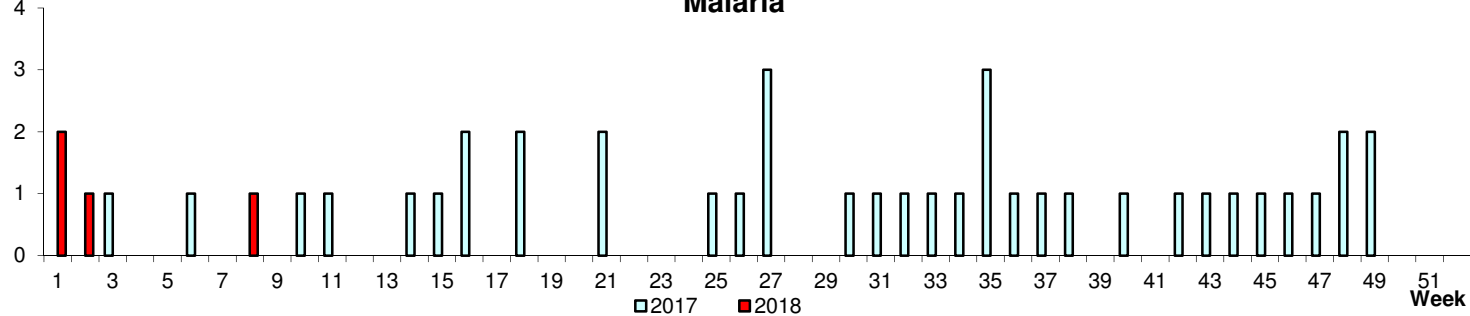
Chikungunya Fever

No. of Cases



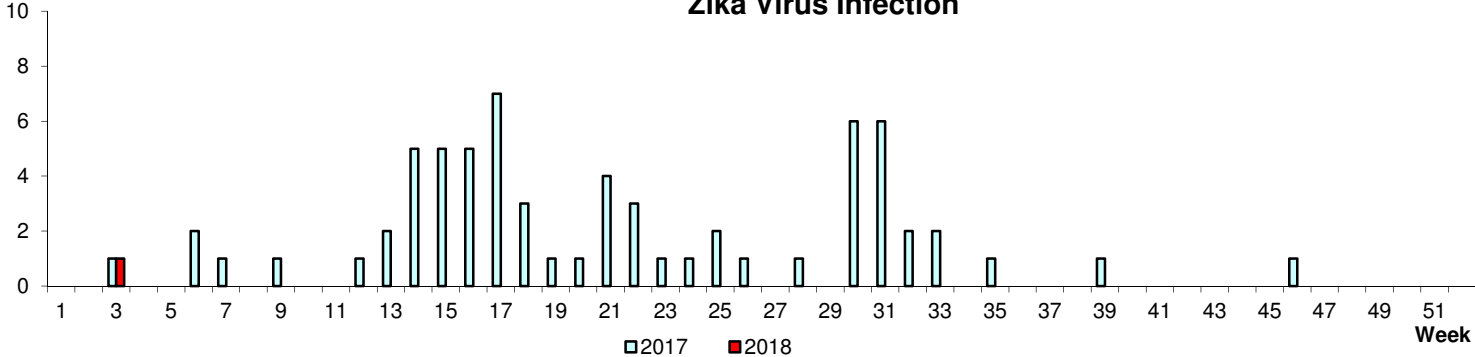
Malaria

No. of Cases

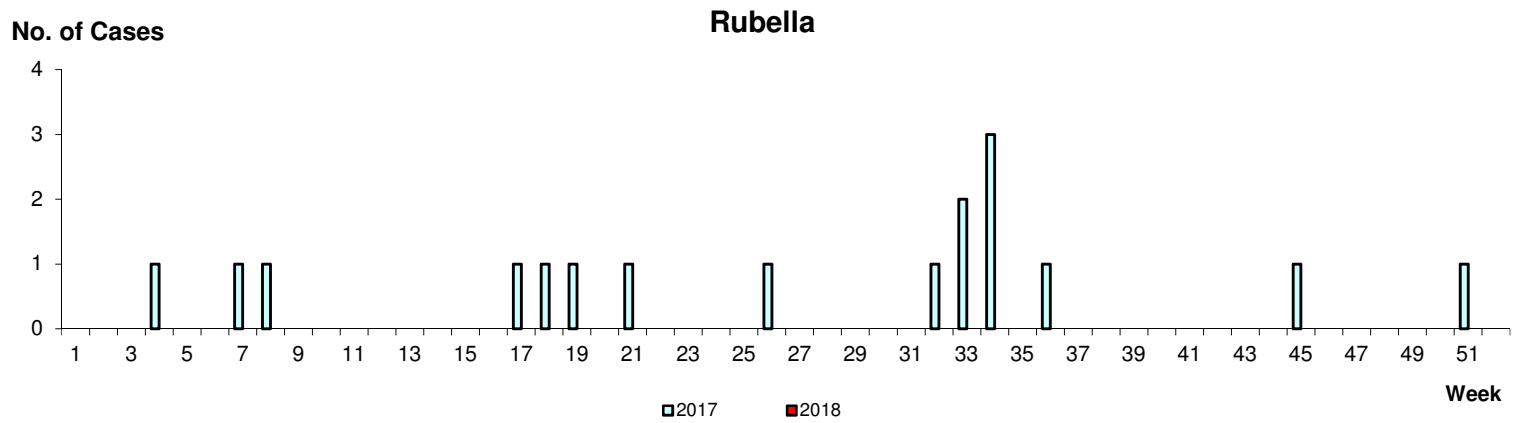
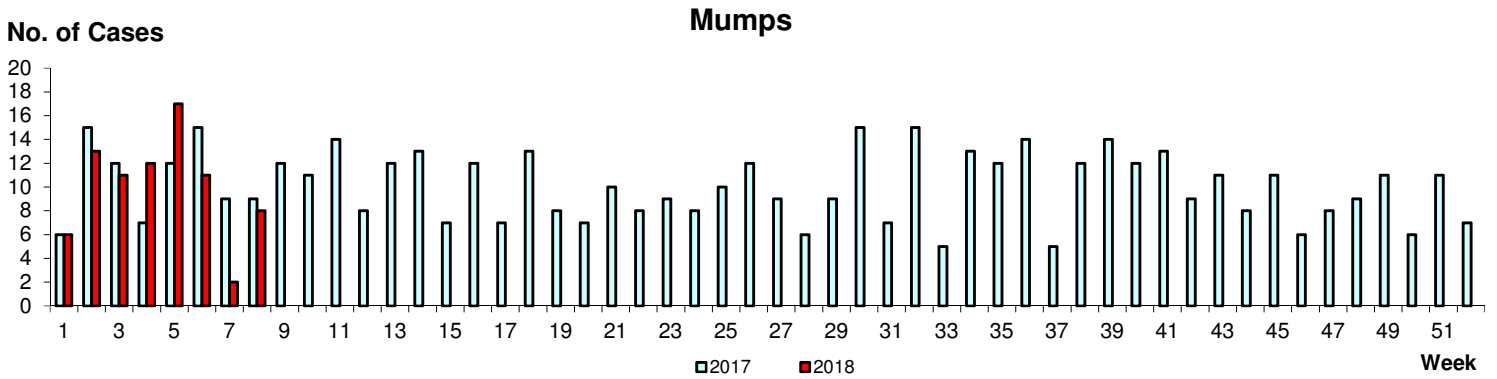
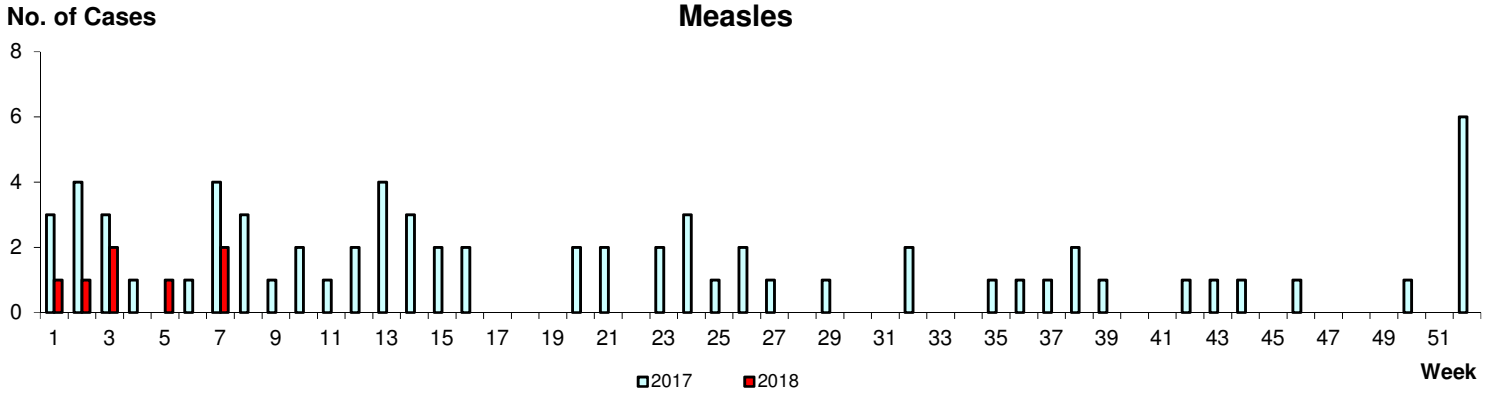


Zika Virus Infection

No. of Cases

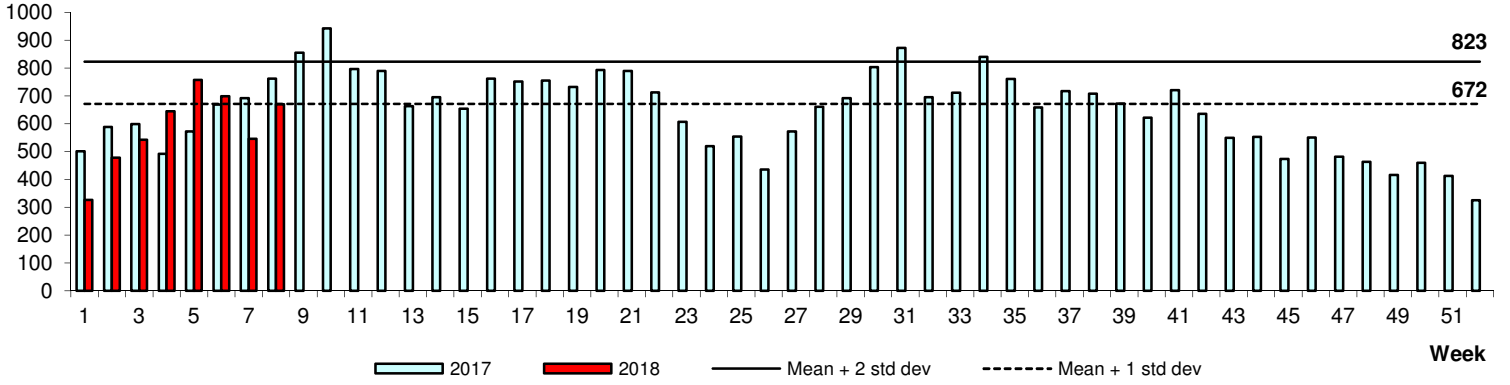


WEEKLY INCIDENCE OF AIR/DROPLET-BORNE DISEASES, 2017-2018



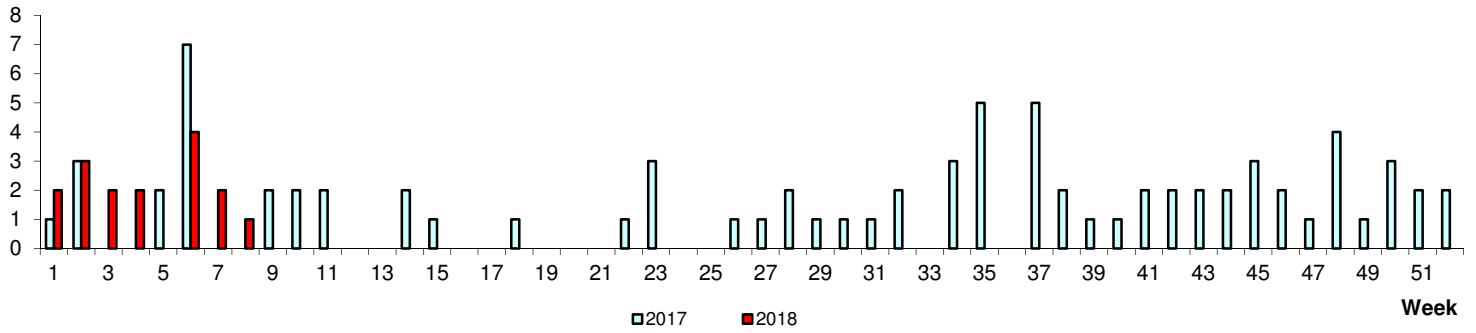
**Hand, Foot & Mouth Disease**

**No. of Cases**



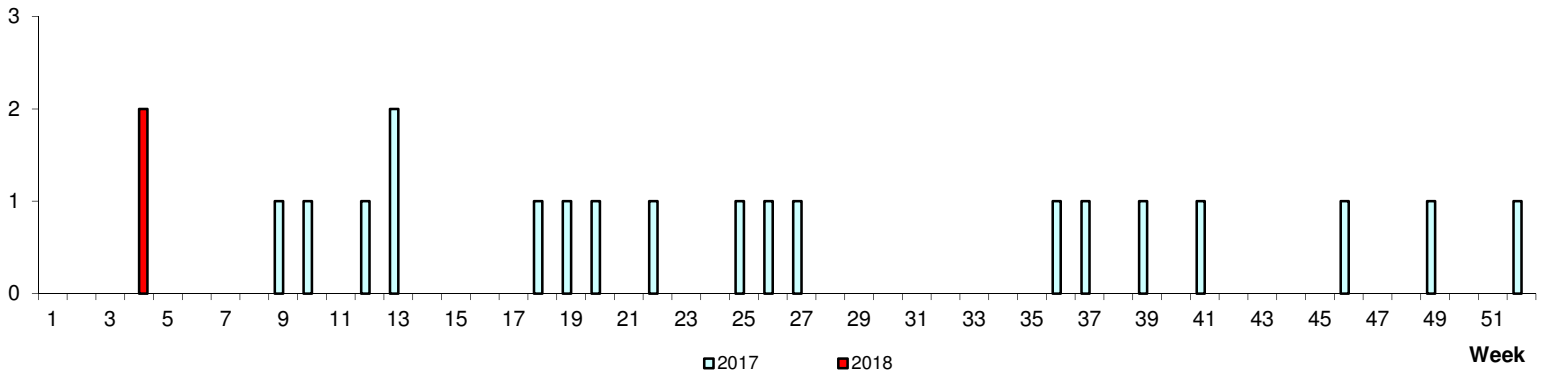
**No. of Cases**

**Pertussis**



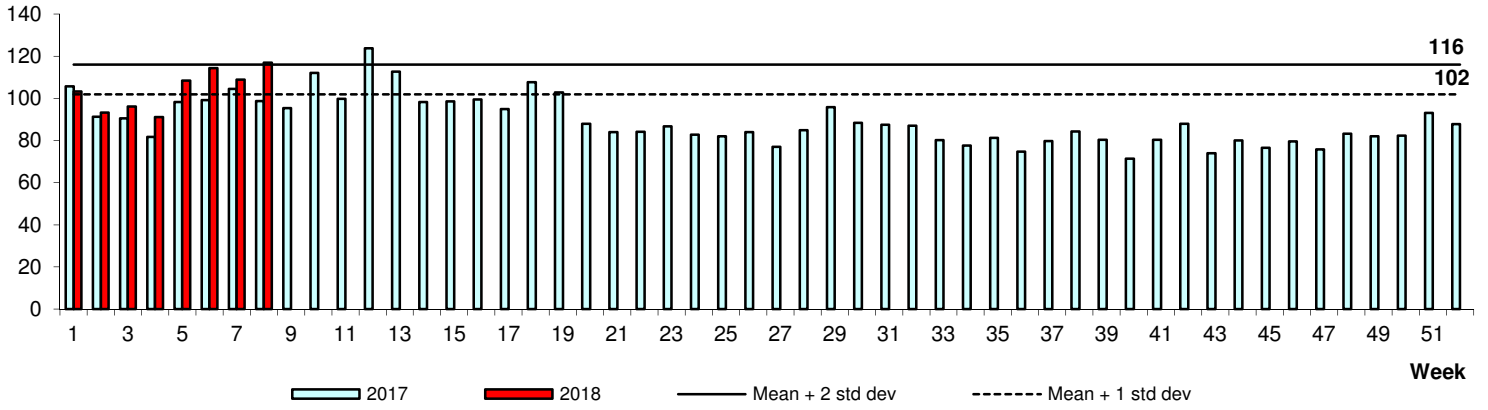
**No. of Cases**

**Legionellosis**



### Conjunctivitis

Average daily no.



Average daily no.

### Diarrhoeal Illness

