



WEEKLY INFECTIOUS DISEASE BULLETIN  
EPIDEMIOLOGICAL WEEK 9 25 Feb - 3 Mar 2018

	E Week 9			Cumulative first 9 Weeks		
	2018*	2017	Median 2013 -2017	2018	2017	Median 2013 -2017
<b>FOOD/WATER-BORNE DISEASES</b>						
Acute Hepatitis A	0	2	2	10	13	13
Acute Hepatitis E	2	2	0	4	10	9
Campylobacteriosis	4	6	8	68	64	79
Cholera	0	0	0	1	0	0
Paratyphoid	1	0	1	5	6	5
Poliomyelitis	0	0	0	0	0	0
Salmonellosis	32	45	32	228	355	273
Typhoid	1	1	1	9	23	12
<b>VECTOR-BORNE DISEASES</b>						
Chikungunya Fever	1	1	1	1	1	7
Dengue Fever	51	41	189	465	581	2218
Dengue Haemorrhagic Fever	0	0	1	1	4	4
Japanese Encephalitis <sup>^</sup>	0	0	NA	0	0	NA
Leptospirosis <sup>^</sup>	0	1	NA	5	9	NA
Malaria	0	0	0	4	2	2
Murine Typhus <sup>^</sup>	1	0	NA	1	0	NA
Nipah virus infection	0	0	0	0	0	0
Plague	0	0	0	0	0	0
Yellow Fever	0	0	0	0	0	0
Zika Virus Infection	0	1	NA	1	5	NA
<b>AIR/DROPLET-BORNE DISEASES</b>						
Avian Influenza	0	0	NA	0	0	NA
Diphtheria	0	0	0	0	0	0
Ebola Virus Disease	0	0	NA	0	0	NA
<i>Haemophilus influenzae</i> type b	0	0	0	0	3	0
Hand, Foot And Mouth Disease	780	855	645	5443	5730	4787
Legionellosis	0	1	1	2	1	4
Measles	1	1	1	8	20	5
Melioidosis	0	0	0	6	10	10
Meningococcal Disease	1	0	0	2	2	1
Mumps	10	12	11	90	97	92
Pertussis	4	2	0	20	15	12
Pneumococcal Disease (invasive)	3	4	2	23	28	26
Rubella	0	0	0	0	3	3
Severe acute respiratory syndrome	0	0	0	0	0	0
Tetanus <sup>^</sup>	0	0	0	1	0	
<b>OTHER DISEASES</b>						
Acute hepatitis B	1	2	2	7	12	8
Acute hepatitis C	0	0	0	2	4	3
Botulism <sup>^</sup>	0	0	NA	1	0	NA
<b>MERS-CoV</b>						
Suspect cases tested	2	NA	NA	44	41	NA
Other patients tested	1	NA	NA	18	31	NA
<b>POLYCLINIC ATTENDANCES - AVERAGE DAILY NUMBER</b>						
Acute upper respiratory infections	3174	3008	2753			NA
Acute conjunctivitis	101	95	96			NA
Acute Diarrhoea	572	527	469			NA
Chickenpox	23	14	NA			NA
<b>HIV/STI/TB NOTIFICATIONS</b>						
	2017	Dec		Cumulative 2017		
HIV/AIDS		25		399		
Legally Notifiable STIs**		670		8399		
Tuberculosis		135		1560		

\* Preliminary figures, subject to revision when more information is available.

\*\* *Wef Jan 2010, reporting has changed from all types of STIs to legally notifiable STIs, which comprise gonorrhoea, non-gonococcal urethritis, syphilis (congenital, infectious, non-infectious), chlamydia and genital herpes (first episode and recurrent).*

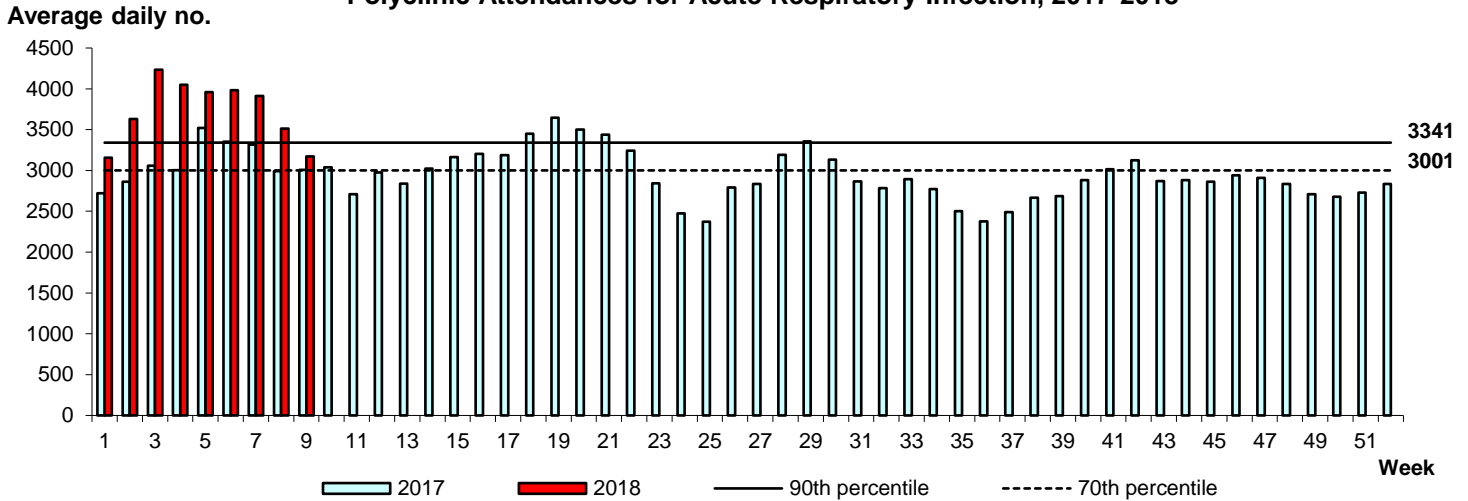
<sup>^</sup> Added to the list of notifiable diseases as of 28 Sep 2016

## Influenza Situation in Singapore 2018

Influenza indicators for E-week 9 (25 Feb- 3 Mar 2018) are as follows:

The average daily number of patients seeking treatment in the polyclinics for ARI decreased from 3,513 (over 5.5 working days) in E-week 8 to 3,174 (over 5.5 working days) in E-week 9.

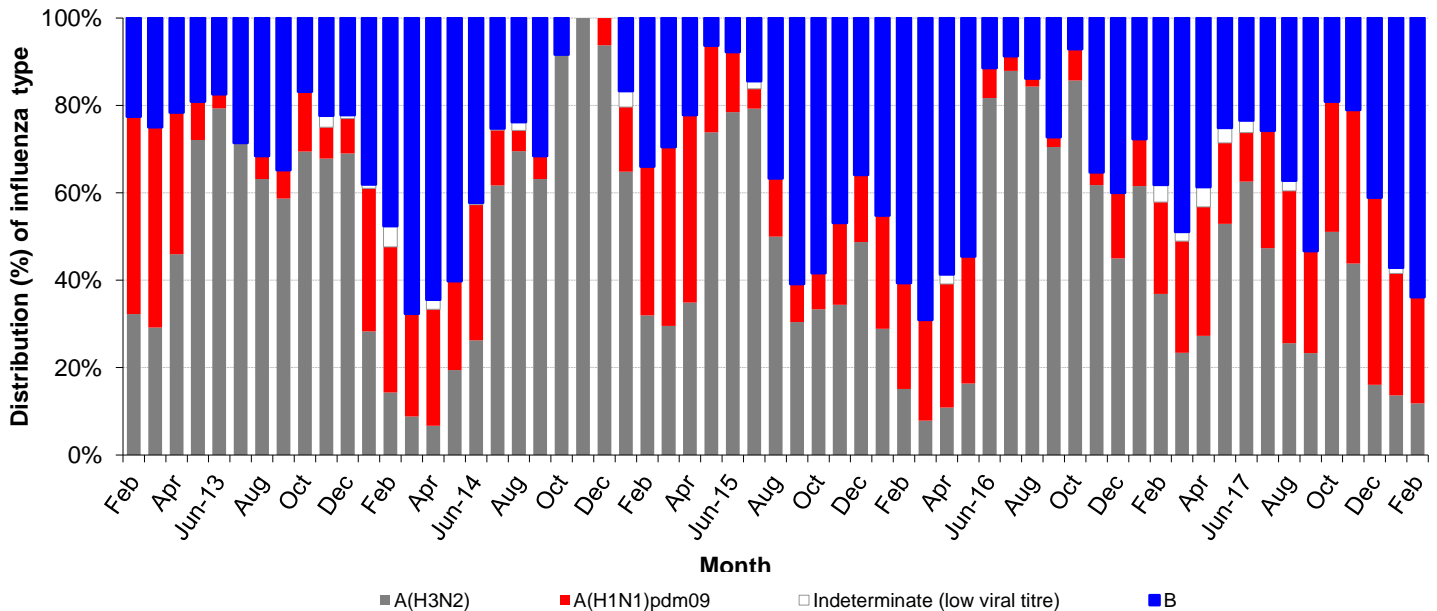
### Polyclinic Attendances for Acute Respiratory Infection, 2017-2018



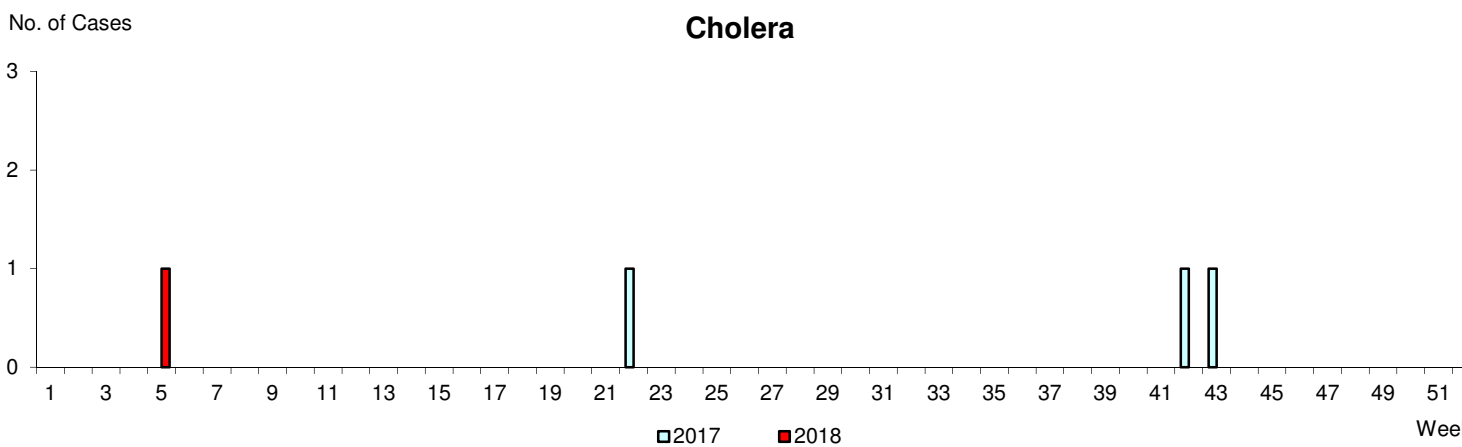
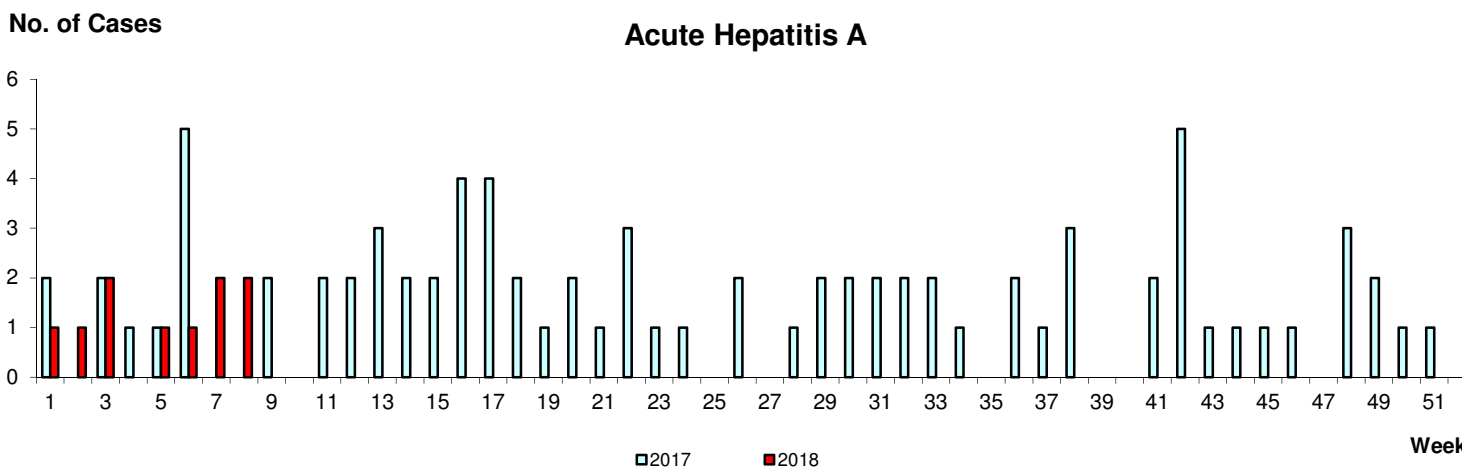
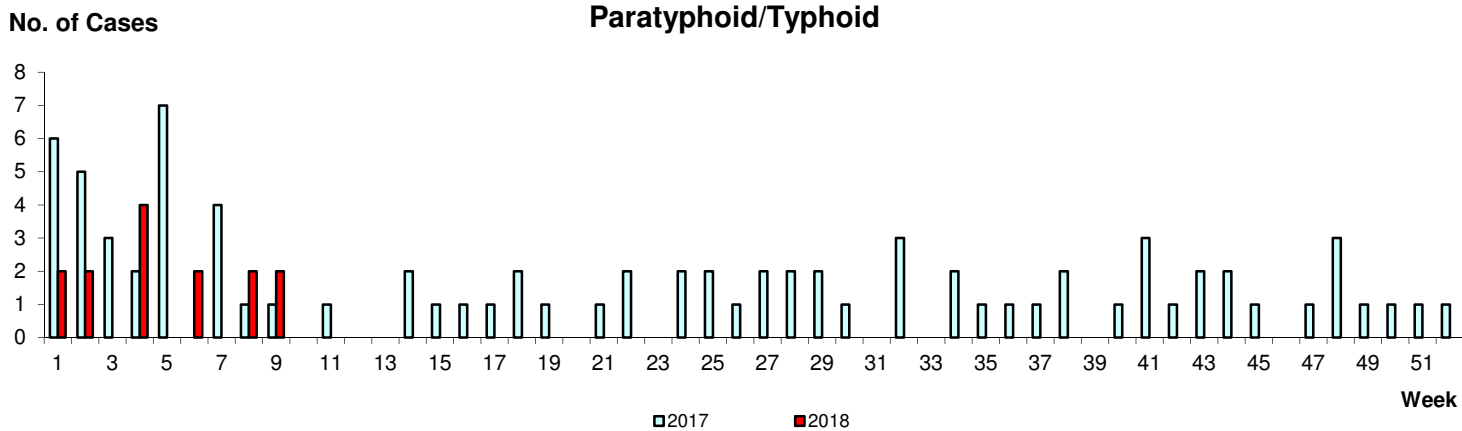
The proportion of patients with influenza-like illness (ILI) among the polyclinic attendances for ARI is 2.1%.

The overall positivity rate for influenza among ILI samples (n=392) in the community was 37.0% in the past 4 weeks. Of the specimens tested positive for influenza in February 2018, these were positive for influenza B (63.9%), influenza A(H1N1)pdm09 (24.3%) and influenza A(H3N2) (11.8%).

### Monthly Influenza Surveillance

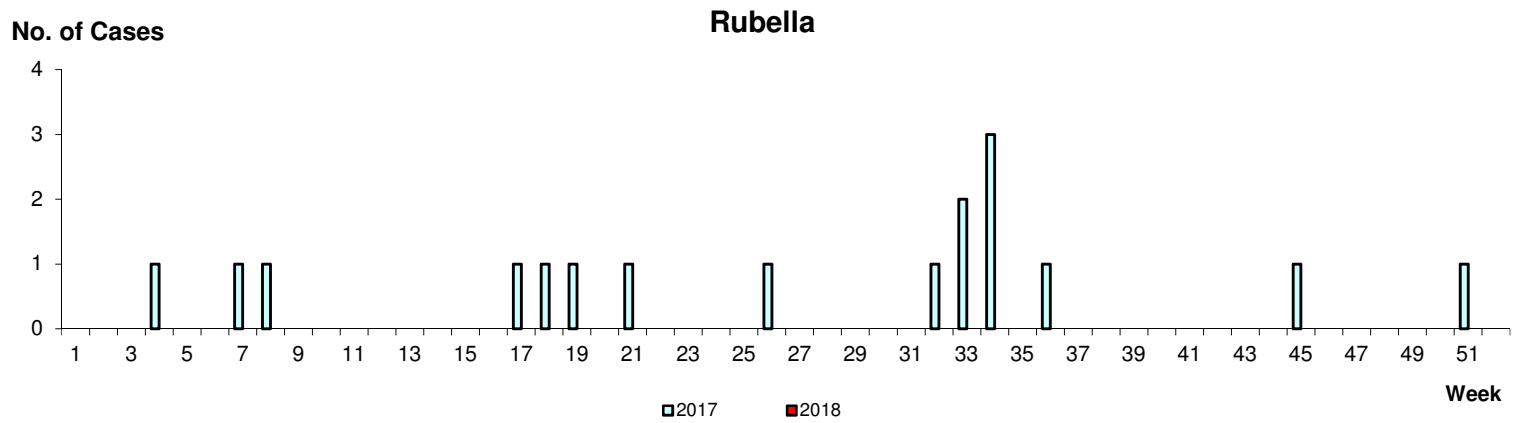
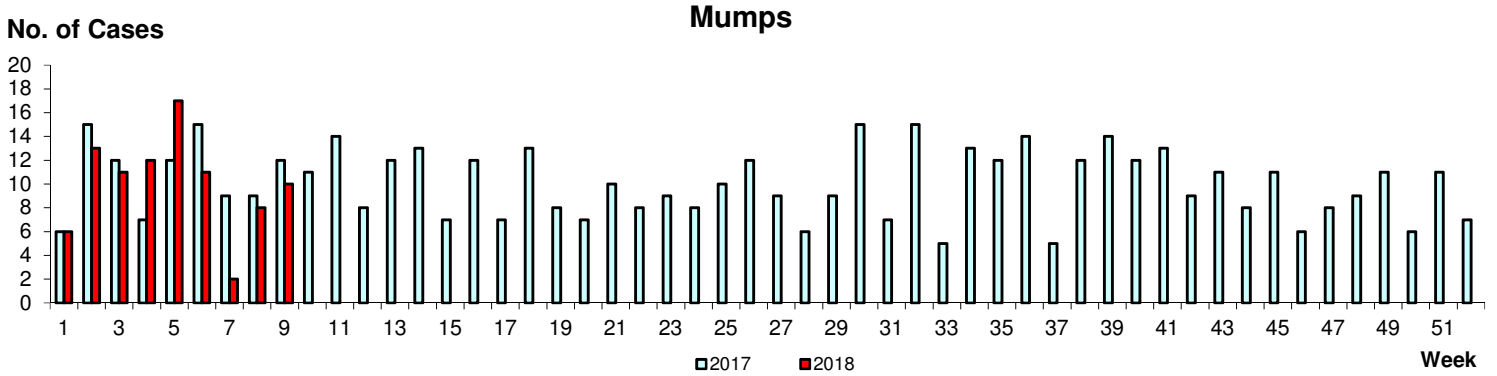
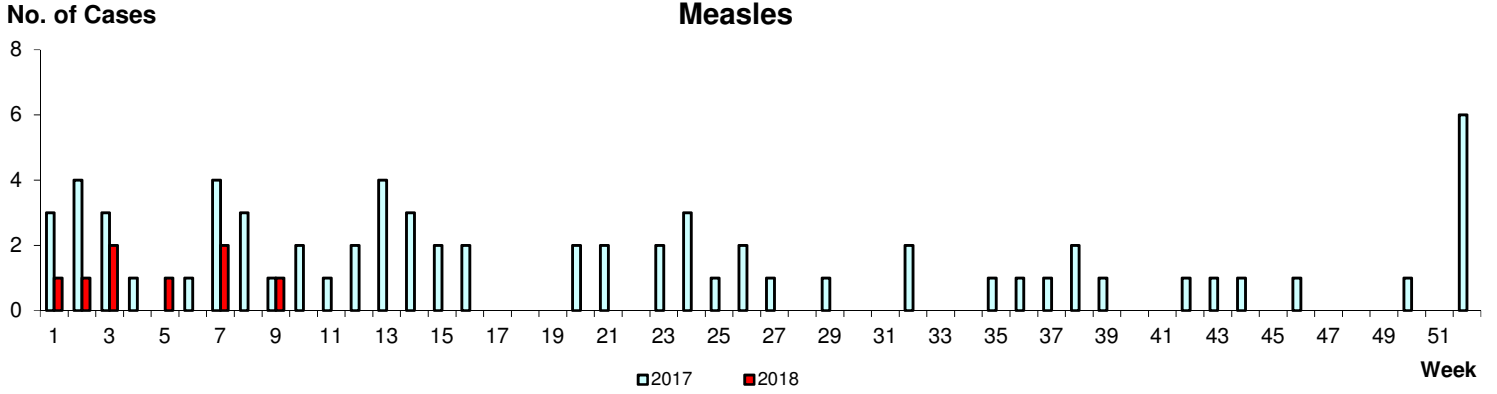


\* Based on influenza-like illness (ILI) samples from GPs and polyclinics



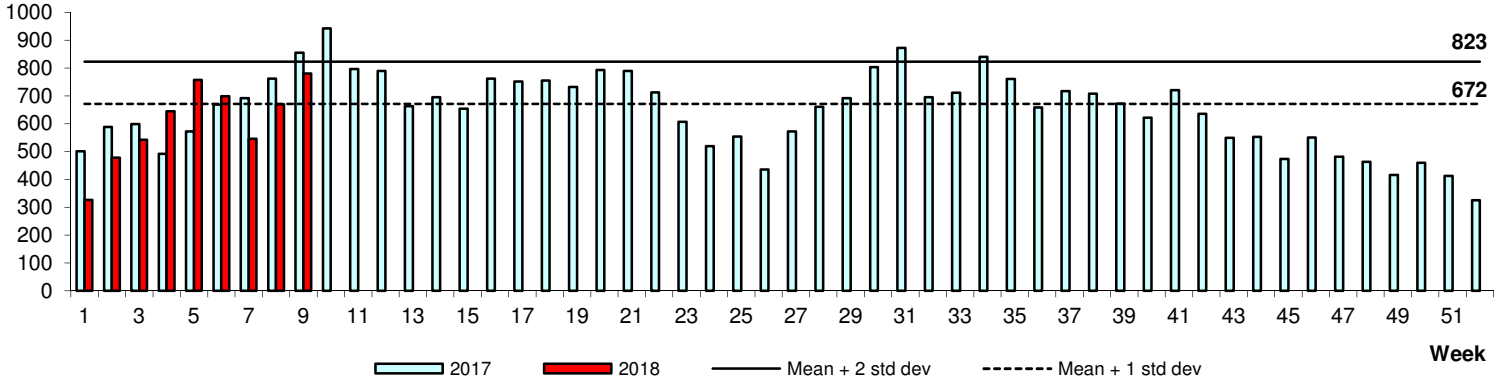


WEEKLY INCIDENCE OF AIR/DROPLET-BORNE DISEASES, 2017-2018



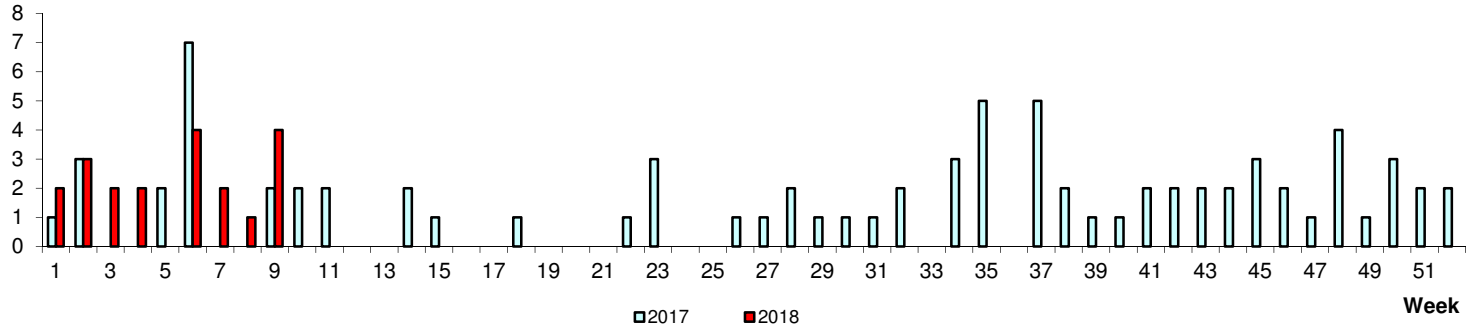
**Hand, Foot & Mouth Disease**

No. of Cases



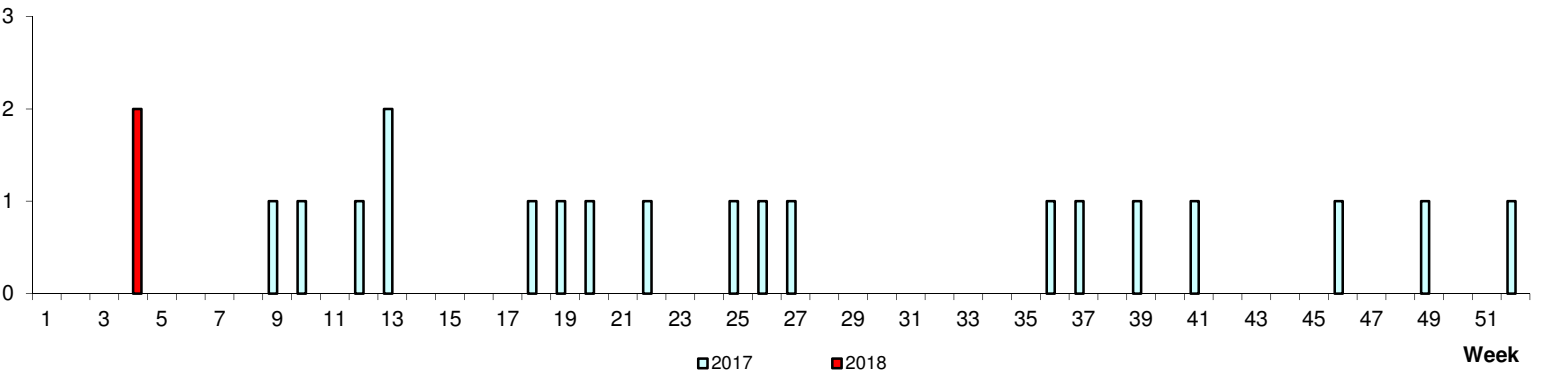
No. of Cases

**Pertussis**



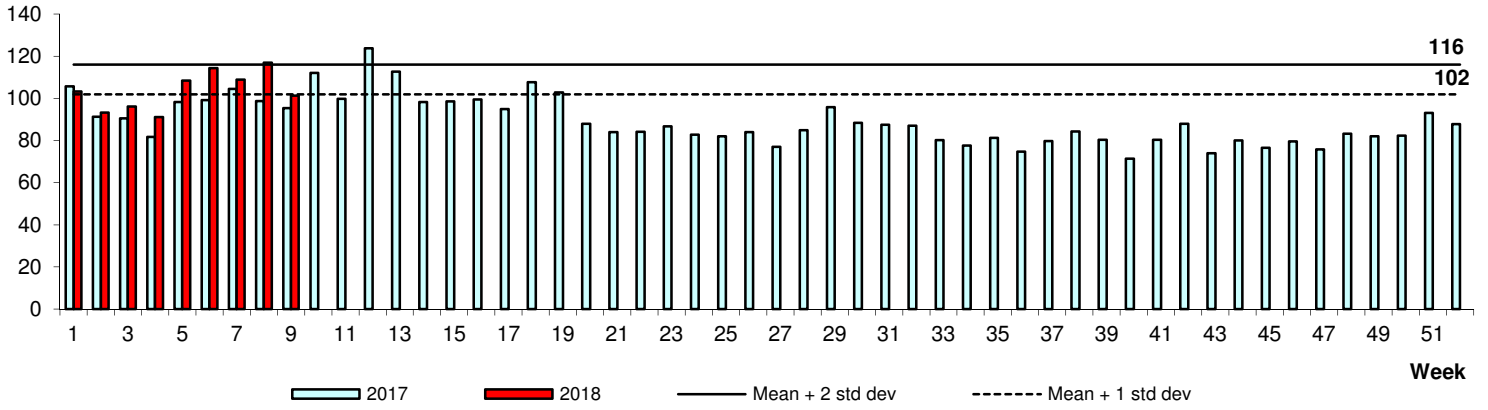
No. of Cases

**Legionellosis**



### Conjunctivitis

Average daily no.



### Diarrhoeal Illness

Average daily no.

