



WEEKLY INFECTIOUS DISEASE BULLETIN  
EPIDEMIOLOGICAL WEEK 10 4 - 10 Mar 2018

	E Week 10			Cumulative first 10 Weeks		
	2018*	2017	Median 2013 -2017	2018	2017	Median 2013 -2017
<b>FOOD/WATER-BORNE DISEASES</b>						
Acute Hepatitis A	1	0	0	11	13	13
Acute Hepatitis E	0	1	1	6	11	11
Campylobacteriosis	4	8	7	72	72	87
Cholera	0	0	0	1	0	0
Paratyphoid	0	0	1	5	6	6
Poliomyelitis	0	0	0	0	0	0
Salmonellosis	32	32	27	259	387	300
Typhoid	0	0	1	9	23	16
<b>VECTOR-BORNE DISEASES</b>						
Chikungunya Fever	0	0	0	1	1	7
Dengue Fever	37	32	209	502	613	2490
Dengue Haemorrhagic Fever	0	0	1	1	4	5
Japanese Encephalitis^	0	0	NA	0	0	NA
Leptospirosis^	0	1	NA	5	10	NA
Malaria	0	1	1	4	3	3
Murine Typhus^	0	0	NA	0	0	NA
Nipah virus infection	0	0	0	0	0	0
Plague	0	0	0	0	0	0
Yellow Fever	0	0	0	0	0	0
Zika Virus Infection	0	0	NA	1	5	NA
<b>AIR/DROPLET-BORNE DISEASES</b>						
Avian Influenza	0	0	NA	0	0	NA
Diphtheria	0	0	0	0	0	0
Ebola Virus Disease	0	0	NA	0	0	NA
<i>Haemophilus influenzae</i> type b	0	0	0	0	3	1
Hand, Foot And Mouth Disease	1105	943	609	6546	6673	5396
Legionellosis	0	1	1	2	2	4
Measles	2	2	2	10	22	7
Melioidosis	0	0	0	6	10	10
Meningococcal Disease	0	0	0	2	2	1
Mumps	5	11	6	95	108	99
Pertussis	0	2	1	20	17	13
Pneumococcal Disease (invasive)	4	2	3	27	30	30
Rubella	0	0	0	0	3	3
Severe acute respiratory syndrome	0	0	0	0	0	0
Tetanus^	0	0	0	1	0	
<b>OTHER DISEASES</b>						
Acute hepatitis B	0	1	1	7	13	8
Acute hepatitis C	0	0	0	3	4	3
Botulism^	0	0	NA	1	0	NA
<b>MERS-CoV</b>						
Suspect cases tested	5	NA	NA	49	48	NA
Other patients tested	0	NA	NA	18	31	NA
<b>POLYCLINIC ATTENDANCES - AVERAGE DAILY NUMBER</b>						
Acute upper respiratory infections	3012	3038	2702			NA
Acute conjunctivitis	103	112	99			NA
Acute Diarrhoea	549	533	481			NA
Chickenpox	21	16	NA			NA
<b>HIV/STI/TB NOTIFICATIONS</b>						
	2017	Dec		Cumulative 2017		
HIV/AIDS		25		399		
Legally Notifiable STIs**		670		8399		
Tuberculosis		135		1560		

\* Preliminary figures, subject to revision when more information is available.

\*\* Wef Jan 2010, reporting has changed from all types of STIs to legally notifiable STIs, which comprise gonorrhoea, non-gonococcal urethritis, syphilis (congenital, infectious, non-infectious), chlamydia and genital herpes (first episode and recurrent).

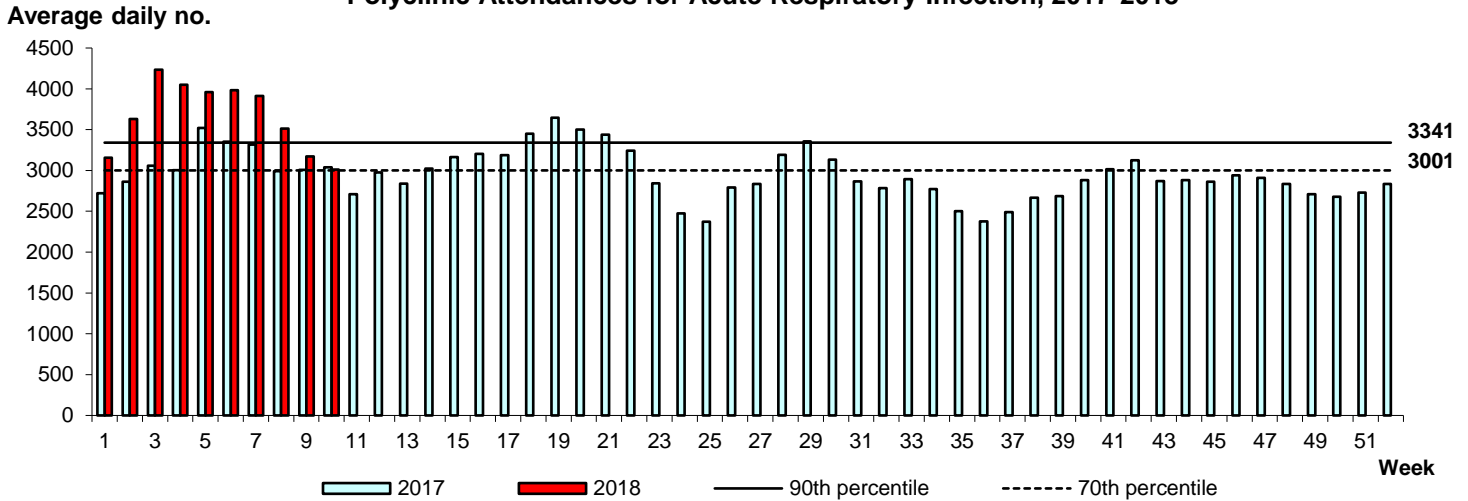
^ Added to the list of notifiable diseases as of 28 Sep 2016

## Influenza Situation in Singapore 2018

Influenza indicators for E-week 10 (4 - 10 Mar 2018) are as follows:

The average daily number of patients seeking treatment in the polyclinics for ARI decreased from 3,174 (over 5.5 working days) in E-week 9 to 3,012 (over 5.5 working days) in E-week 10.

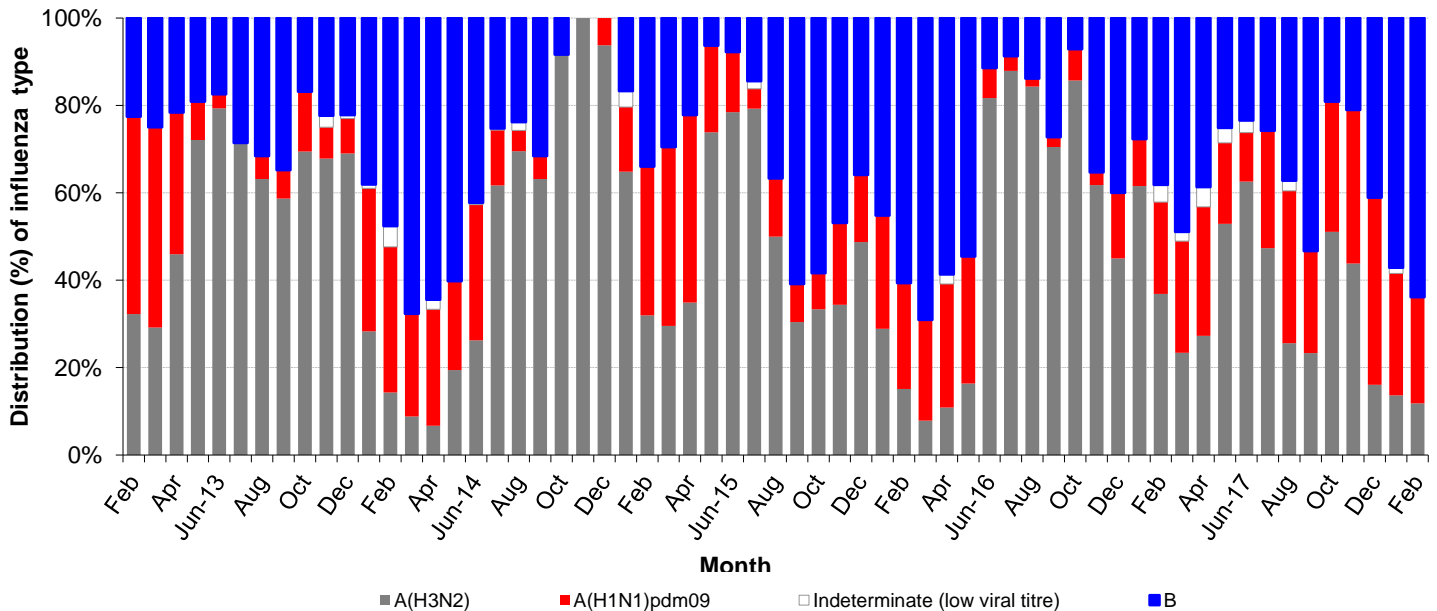
### Polyclinic Attendances for Acute Respiratory Infection, 2017-2018



The proportion of patients with influenza-like illness (ILI) among the polyclinic attendances for ARI is 2.5%.

The overall positivity rate for influenza among ILI samples (n=340) in the community was 32.4% in the past 4 weeks. Of the specimens tested positive for influenza in February 2018, these were positive for influenza B (63.9%), influenza A(H1N1)pdm09 (24.3%) and influenza A(H3N2) (11.8%).

### Monthly Influenza Surveillance

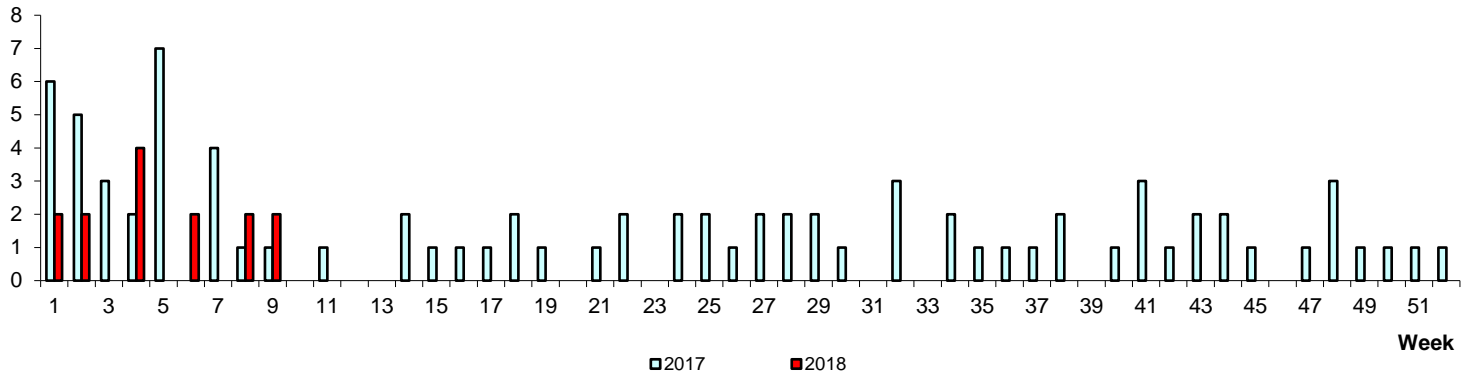


\* Based on influenza-like illness (ILI) samples from GPs and polyclinics

WEEKLY INCIDENCE OF FOOD/WATER-BORNE DISEASES, 2017-2018

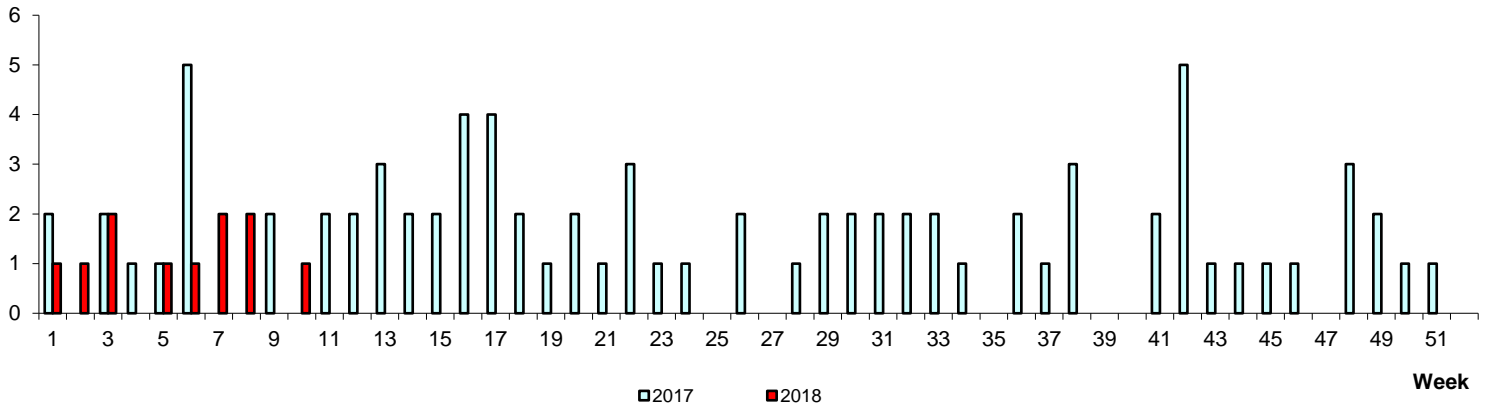
No. of Cases

Paratyphoid/Typhoid



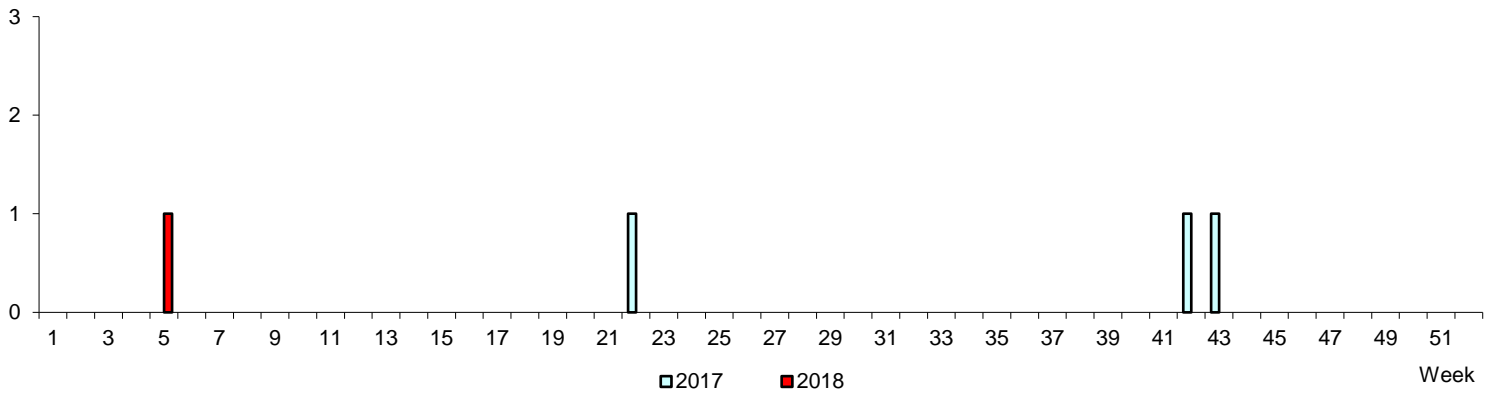
No. of Cases

Acute Hepatitis A



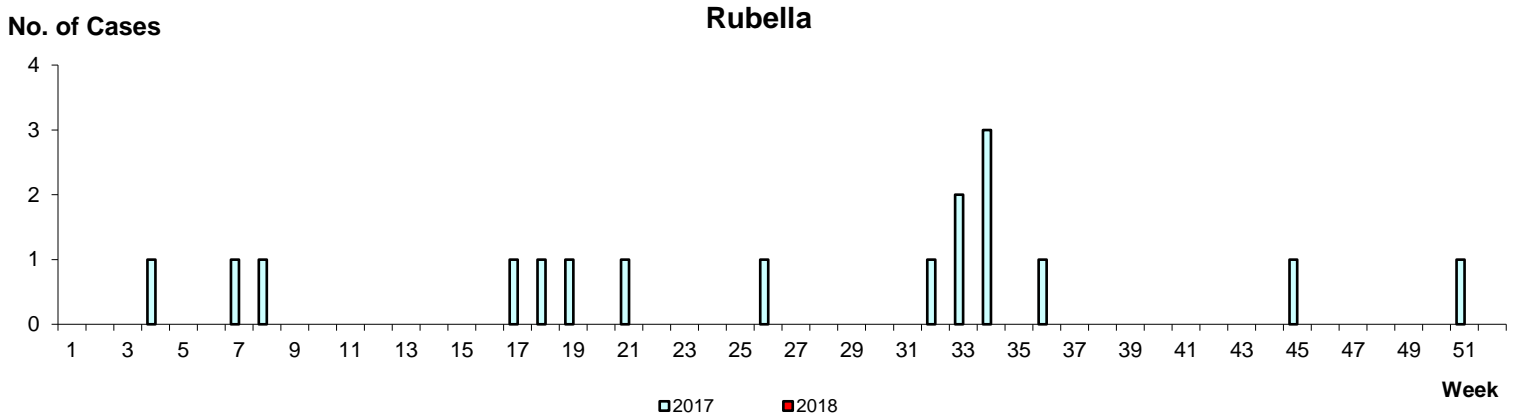
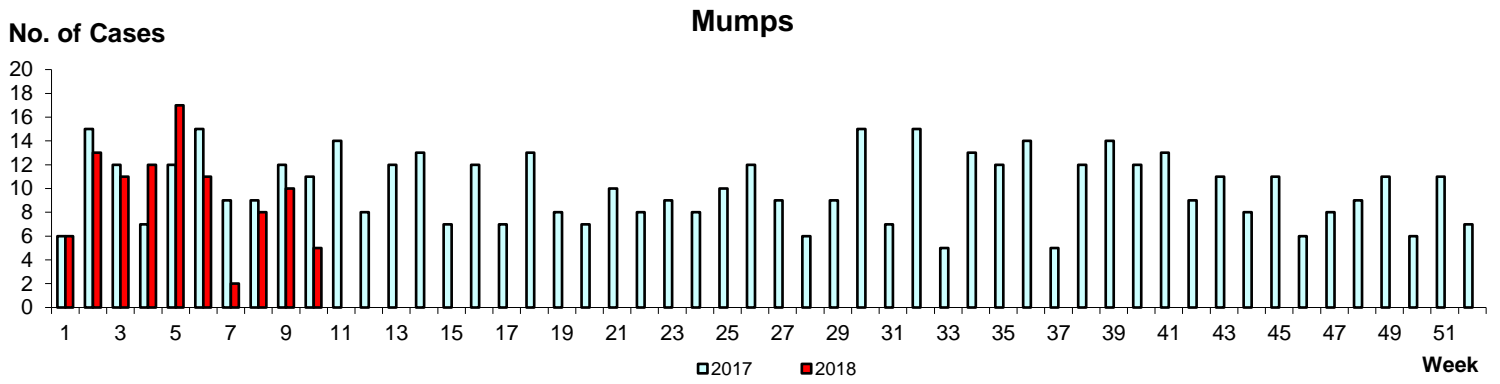
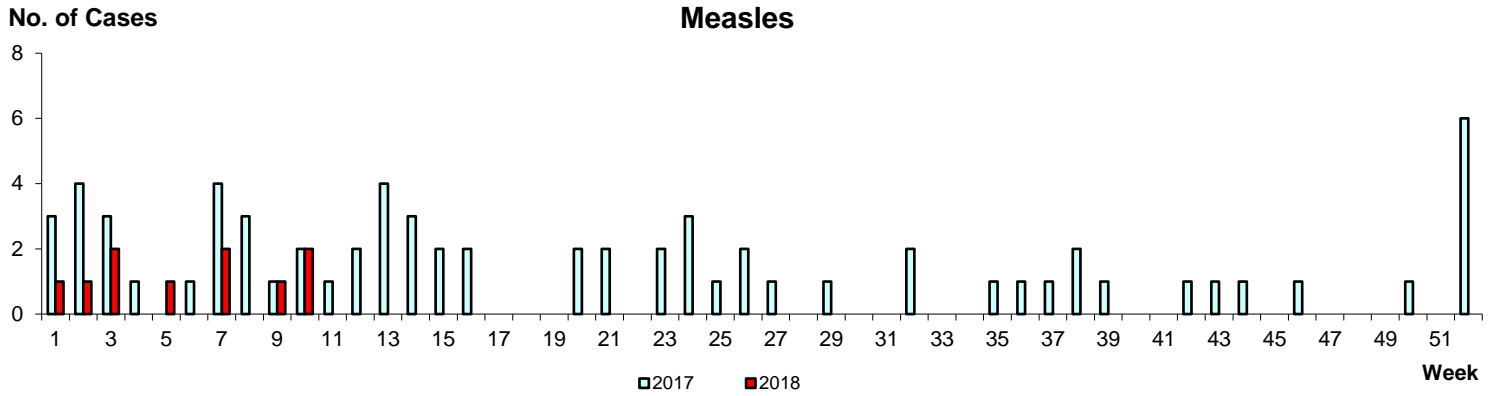
No. of Cases

Cholera



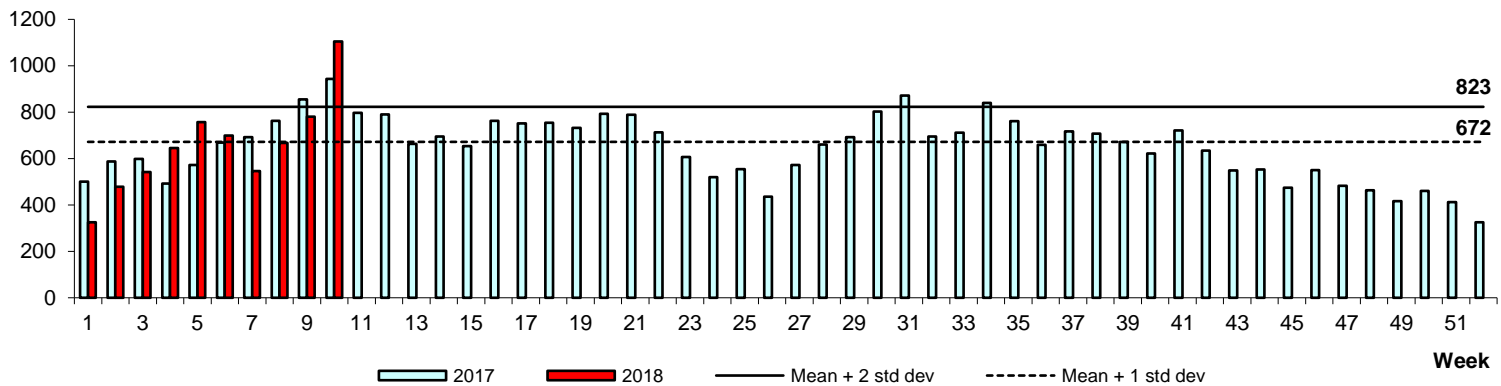


## WEEKLY INCIDENCE OF AIR/DROPLET-BORNE DISEASES, 2017-2018



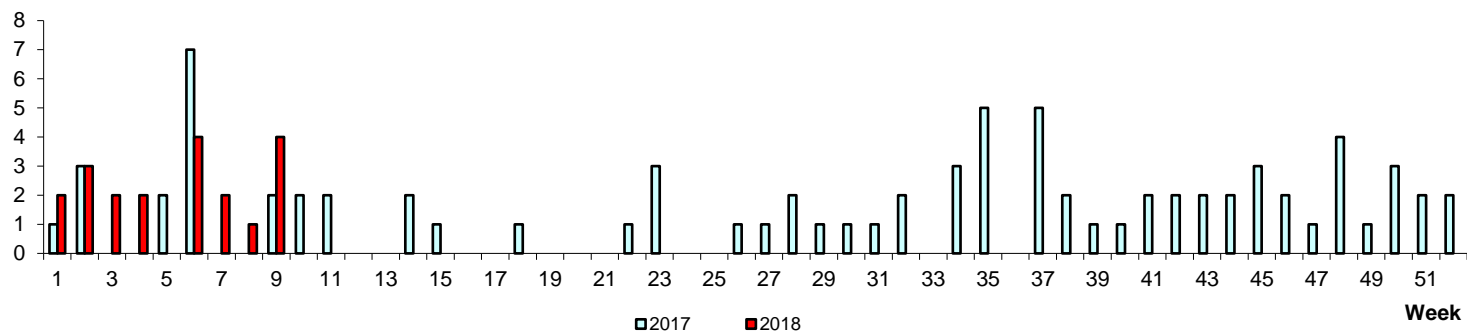
Hand, Foot & Mouth Disease

No. of Cases



No. of Cases

Pertussis



No. of Cases

Legionellosis

