



WEEKLY INFECTIOUS DISEASE BULLETIN  
EPIDEMIOLOGICAL WEEK 12 18 - 24 Mar 2018

	E Week 12			Cumulative first 12 Weeks		Median 2013 -2017
	2018*	2017	Median 2013 -2017	2018	2017	
<b>FOOD/WATER-BORNE DISEASES</b>						
Acute Hepatitis A	2	2	1	15	17	17
Acute Hepatitis E	3	3	2	9	14	14
Campylobacteriosis	12	7	4	89	87	98
Cholera	0	0	0	1	0	0
Paratyphoid	0	0	1	5	6	7
Poliomyelitis	0	0	0	0	0	0
Salmonellosis	30	63	40	321	481	369
Typhoid	0	0	0	9	24	18
<b>VECTOR-BORNE DISEASES</b>						
Chikungunya Fever	0	2	2	1	3	8
Dengue Fever	36	32	210	575	679	3101
Dengue Haemorrhagic Fever	0	0	1	3	5	6
Japanese Encephalitis <sup>^</sup>	0	0	NA	0	0	NA
Leptospirosis <sup>^</sup>	1	0	NA	7	11	NA
Malaria	1	0	1	7	4	4
Murine Typhus <sup>^</sup>	0	0	NA	0	0	NA
Nipah virus infection	0	0	0	0	0	0
Plague	0	0	0	0	0	0
Yellow Fever	0	0	0	0	0	0
Zika Virus Infection	0	1	NA	1	6	NA
<b>AIR/DROPLET-BORNE DISEASES</b>						
Avian Influenza	0	0	NA	0	0	NA
Diphtheria	0	0	0	0	0	0
Ebola Virus Disease	0	0	NA	0	0	NA
<i>Haemophilus influenzae</i> type b	0	0	0	0	3	1
Hand, Foot And Mouth Disease	983	790	558	8475	8260	6510
Legionellosis	0	1	0	2	3	5
Measles	1	2	2	12	25	11
Melioidosis	2	1	0	8	14	10
Meningococcal Disease	0	0	0	3	2	1
Mumps	11	8	7	117	130	118
Pertussis	6	0	0	26	19	16
Pneumococcal Disease (invasive)	2	3	0	32	35	33
Rubella	0	0	0	0	3	3
Severe acute respiratory syndrome	0	0	0	0	0	0
Tetanus <sup>^</sup>	0	0	0	1	0	
<b>OTHER DISEASES</b>						
Acute hepatitis B	0	0	2	9	13	13
Acute hepatitis C	0	0	0	4	4	4
Botulism <sup>^</sup>	0	0	NA	1	0	NA
<b>MERS-CoV</b>						
Suspect cases tested	7	NA	NA	62	62	NA
Other patients tested	7	NA	NA	25	41	NA
<b>POLYCLINIC ATTENDANCES - AVERAGE DAILY NUMBER</b>						
Acute upper respiratory infections	2806	2977	2401			NA
Acute conjunctivitis	112	124	91			NA
Acute Diarrhoea	552	515	448			NA
Chickenpox	15	17	NA			NA
<b>HIV/STI/TB NOTIFICATIONS</b>						
	2018	Feb		Cumulative 2018		
HIV/AIDS		26		50		
Legally Notifiable STIs		784		1676		
Tuberculosis		117		276		

\* Preliminary figures, subject to revision when more information is available.

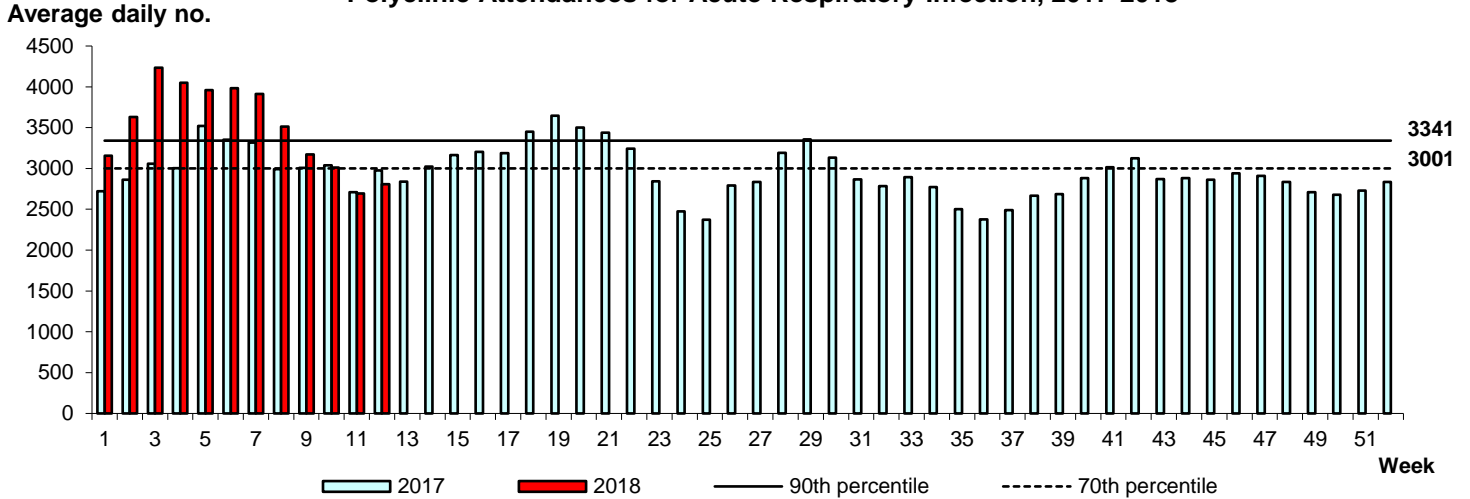
<sup>^</sup> Added to the list of notifiable diseases as of 28 Sep 2016

## Influenza Situation in Singapore 2018

Influenza indicators for E-week 12 (18 - 24 Mar 2018) are as follows:

The average daily number of patients seeking treatment in the polyclinics for ARI increased from 2,694 (over 5.5 working days) in E-week 11 to 2,806 (over 5.5 working days) in E-week 12.

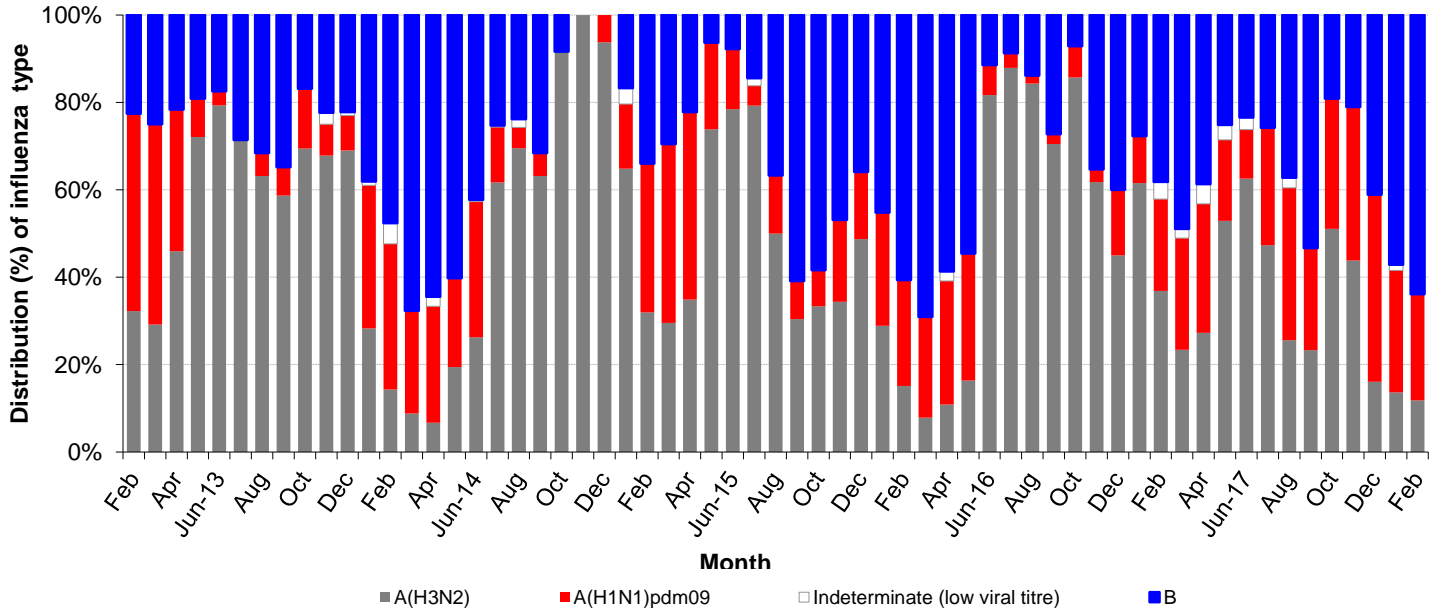
### Polyclinic Attendances for Acute Respiratory Infection, 2017-2018



The proportion of patients with influenza-like illness (ILI) among the polyclinic attendances for ARI is 2.0%.

The overall positivity rate for influenza among ILI samples (n=335) in the community was 30.7% in the past 4 weeks. Of the specimens tested positive for influenza in February 2018, these were positive for influenza B (63.9%), influenza A(H1N1)pdm09 (24.3%) and influenza A(H3N2) (11.8%).

### Monthly Influenza Surveillance

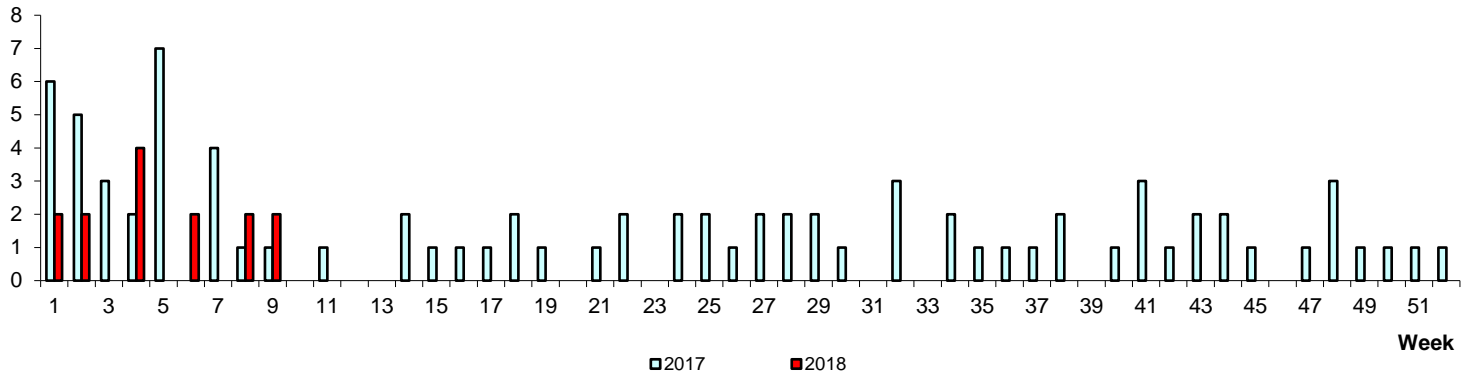


\* Based on influenza-like illness (ILI) samples from GPs and polyclinics

WEEKLY INCIDENCE OF FOOD/WATER-BORNE DISEASES, 2017-2018

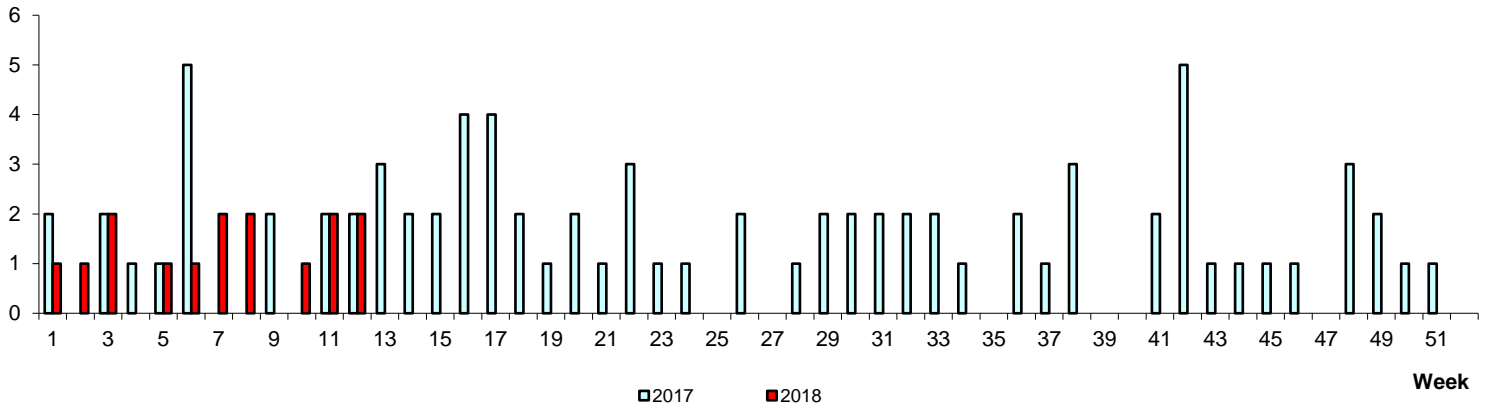
No. of Cases

Paratyphoid/Typhoid



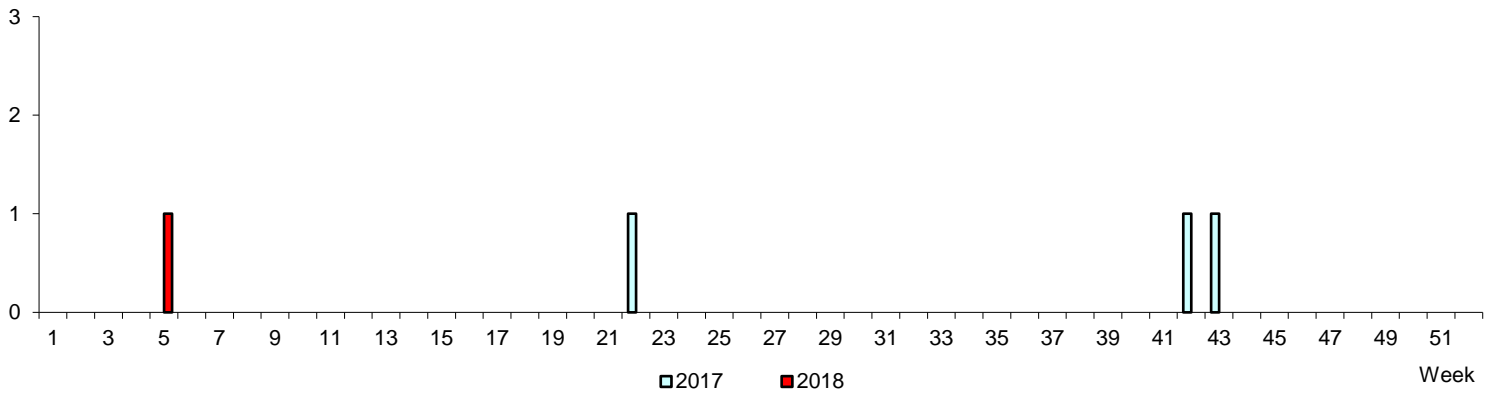
No. of Cases

Acute Hepatitis A



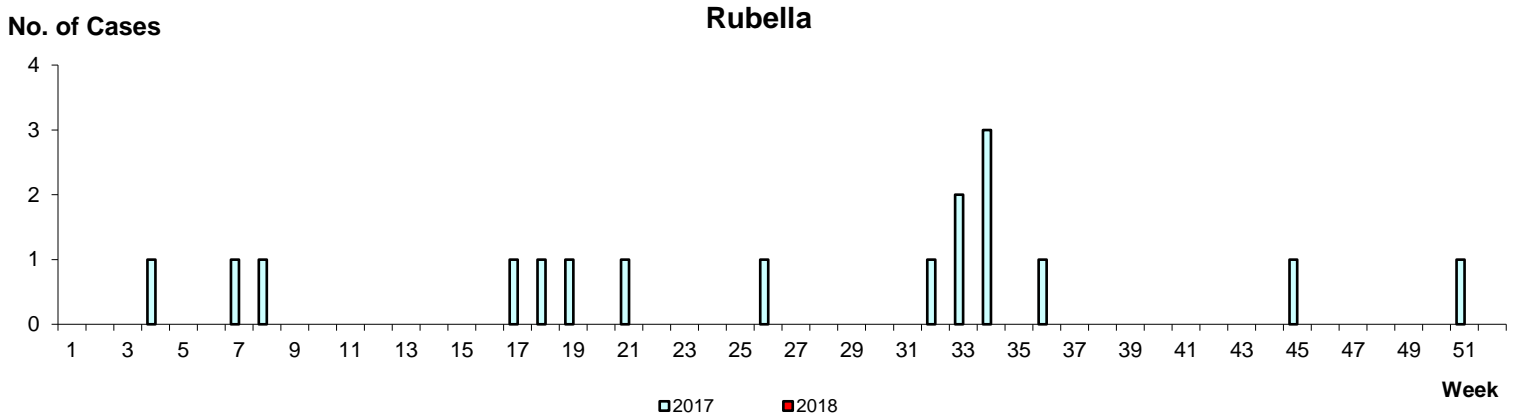
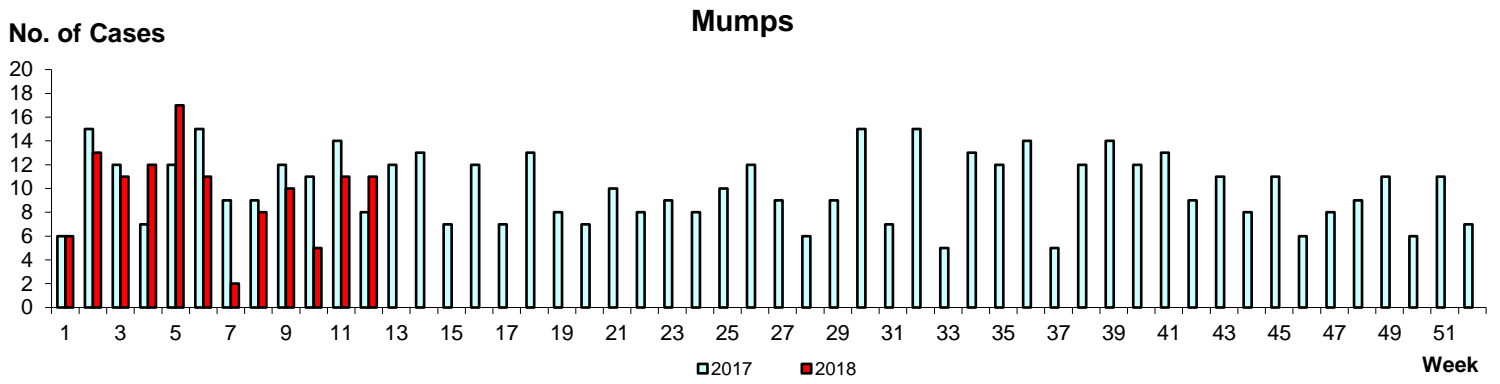
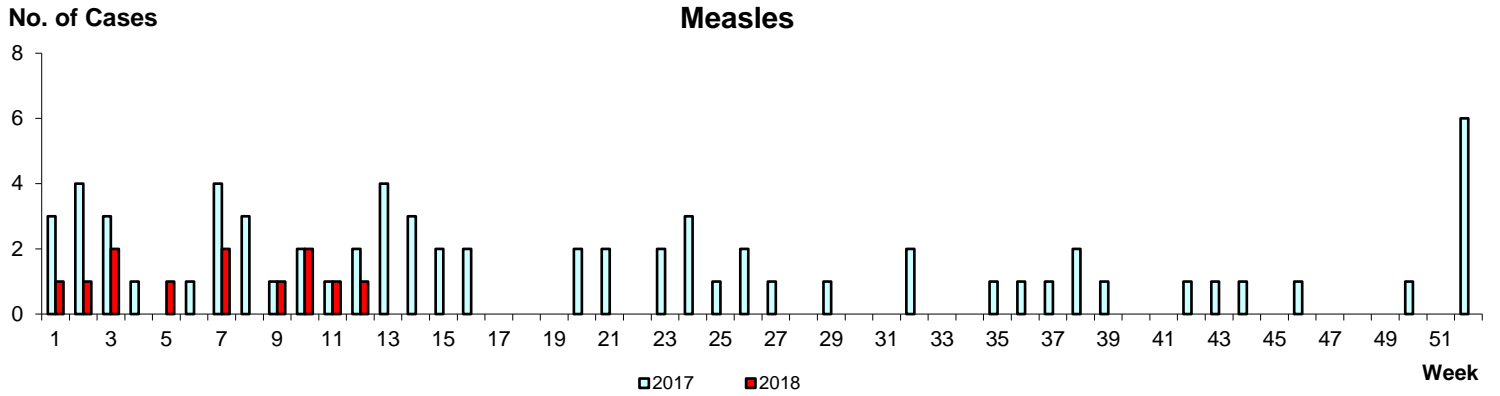
No. of Cases

Cholera



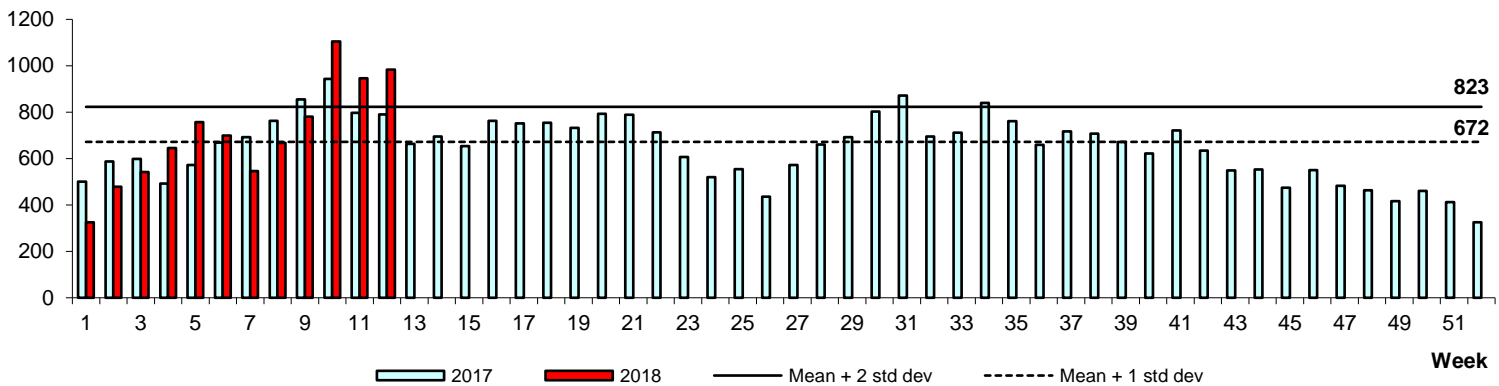


## WEEKLY INCIDENCE OF AIR/DROPLET-BORNE DISEASES, 2017-2018



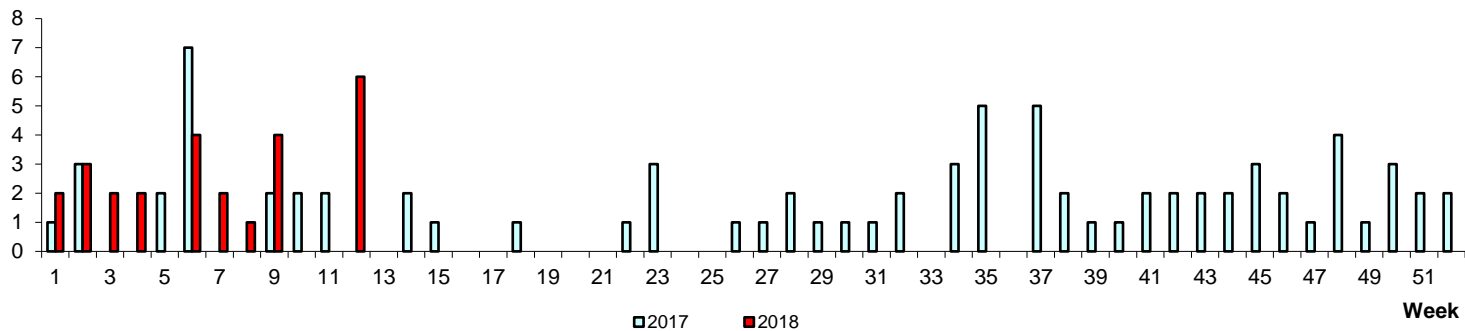
Hand, Foot & Mouth Disease

No. of Cases



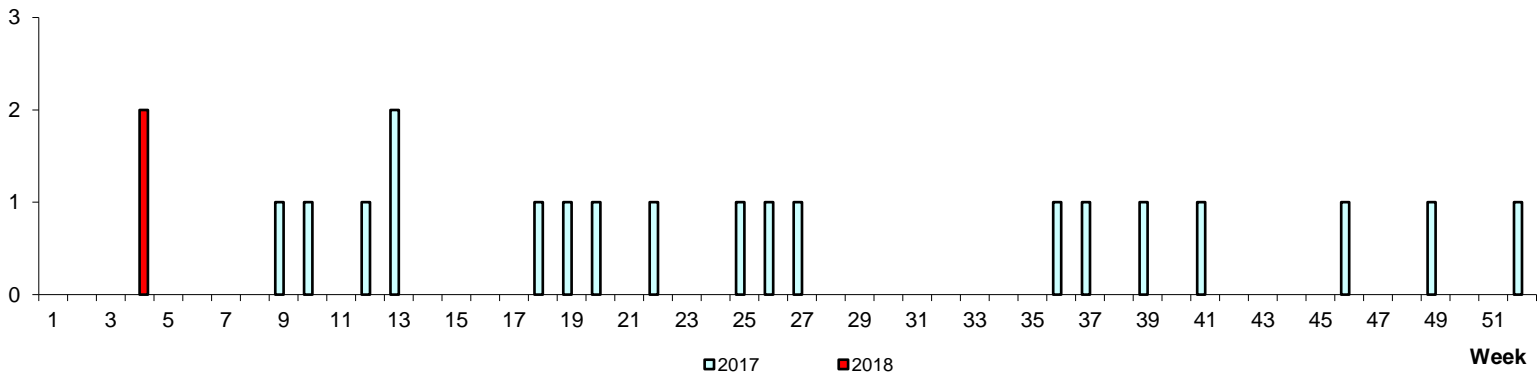
No. of Cases

Pertussis



No. of Cases

Legionellosis



POLYCLINIC ATTENDANCES, 2017-2018

