



WEEKLY INFECTIOUS DISEASE BULLETIN
EPIDEMIOLOGICAL WEEK 14 1 - 7 Apr 2018

	E Week 14			Cumulative first 14 Weeks		Median 2013 -2017
	2018*	2017	Median 2013 -2017	2018	2017	
FOOD/WATER-BORNE DISEASES						
Acute Hepatitis A	1	2	1	17	22	22
Acute Hepatitis E	2	1	1	12	17	15
Campylobacteriosis	10	9	9	110	103	115
Cholera	0	0	0	1	0	0
Paratyphoid	0	0	0	5	6	10
Poliomyelitis	0	0	0	0	0	0
Salmonellosis	32	33	37	375	559	437
Typhoid	3	2	1	12	26	22
VECTOR-BORNE DISEASES						
Chikungunya Fever	0	1	1	1	4	9
Dengue Fever	38	37	240	637	765	3815
Dengue Haemorrhagic Fever	0	0	0	3	6	6
Japanese Encephalitis [^]	0	0	NA	0	0	NA
Leptospirosis [^]	1	1	NA	9	12	NA
Malaria	0	1	1	7	5	9
Murine Typhus [^]	0	0	NA	0	0	NA
Nipah virus infection	0	0	0	0	0	0
Plague	0	0	0	0	0	0
Yellow Fever	0	0	0	0	0	0
Zika Virus Infection	0	5	NA	1	13	NA
AIR/DROPLET-BORNE DISEASES						
Avian Influenza	0	0	NA	0	0	NA
Diphtheria	0	0	0	0	0	0
Ebola Virus Disease	0	0	NA	0	0	NA
<i>Haemophilus influenzae</i> type b	0	1	0	0	4	1
Hand, Foot And Mouth Disease	1010	693	537	10328	9602	7510
Legionellosis	1	0	0	3	5	5
Measles	2	3	3	15	32	16
Melioidosis	0	0	0	8	15	14
Meningococcal Disease	0	1	0	3	4	1
Mumps	12	13	11	139	155	142
Pertussis	5	2	1	32	21	17
Pneumococcal Disease (invasive)	0	0	2	34	40	38
Rubella	0	0	1	0	3	5
Severe acute respiratory syndrome	0	0	0	0	0	0
Tetanus [^]	0	0	0	1	0	
OTHER DISEASES						
Acute hepatitis B	0	0	0	13	13	13
Acute hepatitis C	1	0	0	6	4	4
Botulism [^]	0	0	NA	1	0	NA
MERS-CoV						
Suspect cases tested	2	NA	NA	73	71	NA
Other patients tested	0	NA	NA	32	55	NA
POLYCLINIC ATTENDANCES - AVERAGE DAILY NUMBER						
Acute upper respiratory infections	2968	3023	2395			NA
Acute conjunctivitis	104	98	84			NA
Acute Diarrhoea	565	531	463			NA
Chickenpox	19	16	NA			NA
HIV/STI/TB NOTIFICATIONS						
	2018	Mar		Cumulative 2018		
HIV/AIDS		29		79		
Legally Notifiable STIs		807		2483		
Tuberculosis		142		408		

* Preliminary figures, subject to revision when more information is available.

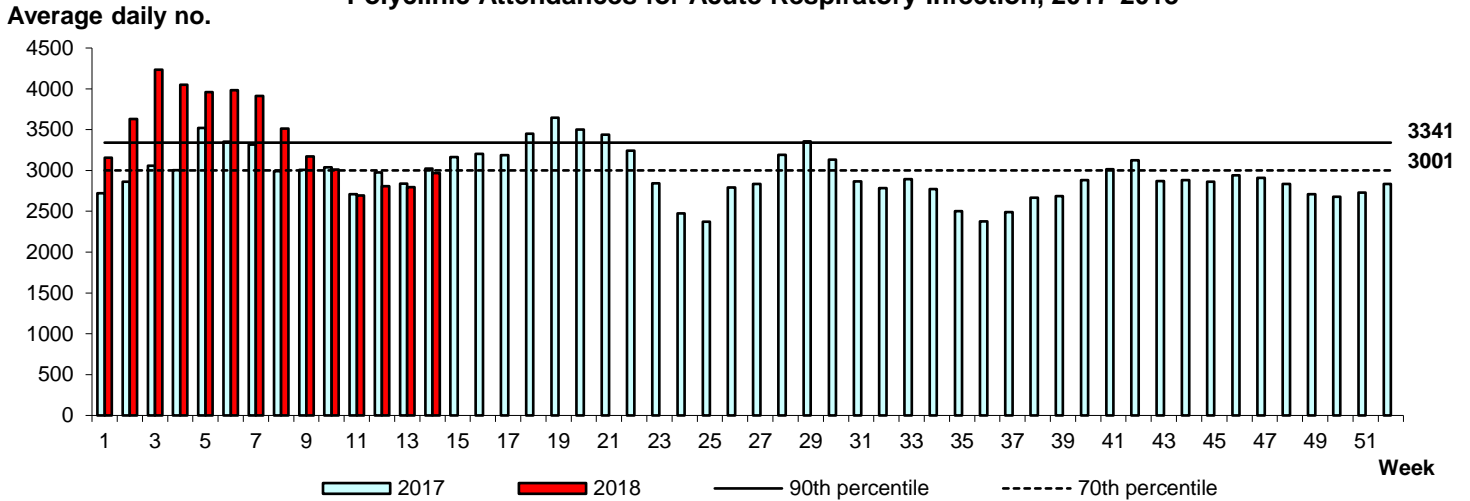
[^] Added to the list of notifiable diseases as of 28 Sep 2016

Influenza Situation in Singapore 2018

Influenza indicators for E-week 14 (1 - 7 Apr 2018) are as follows:

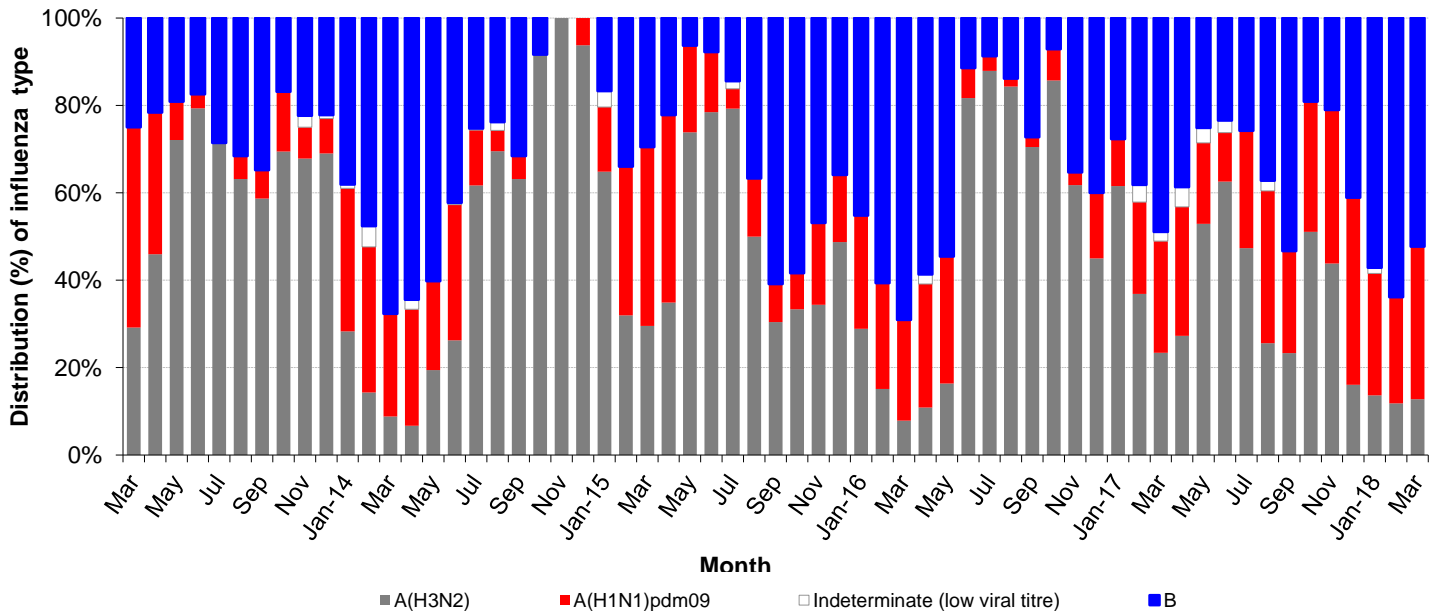
The average daily number of patients seeking treatment in the polyclinics for ARI increased from 2,797 (over 4.5 working days) in E-week 13 to 2,968 (over 5.5 working days) in E-week 14.

Polyclinic Attendances for Acute Respiratory Infection, 2017-2018



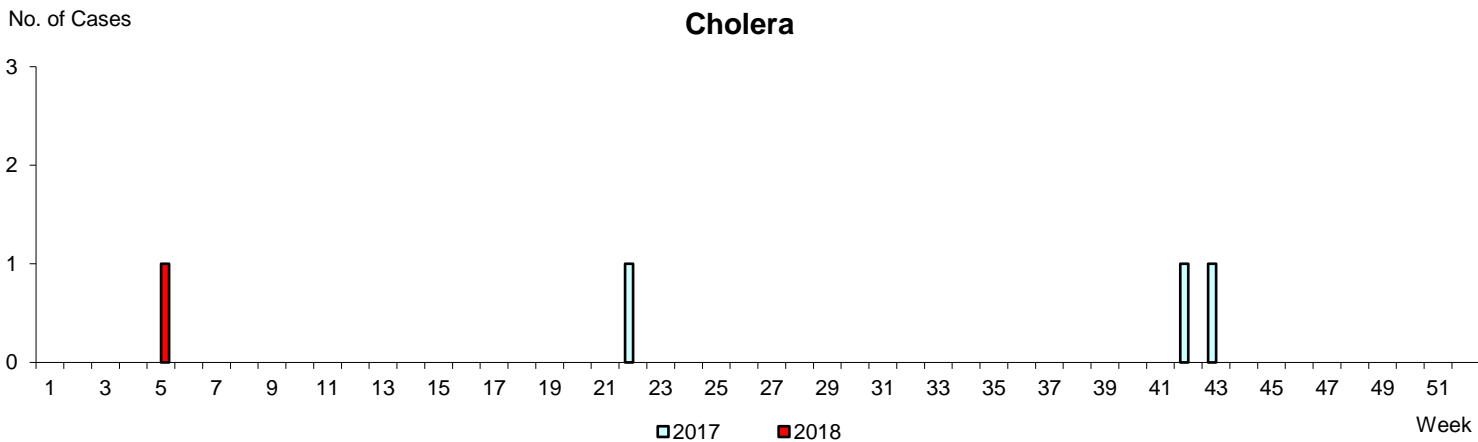
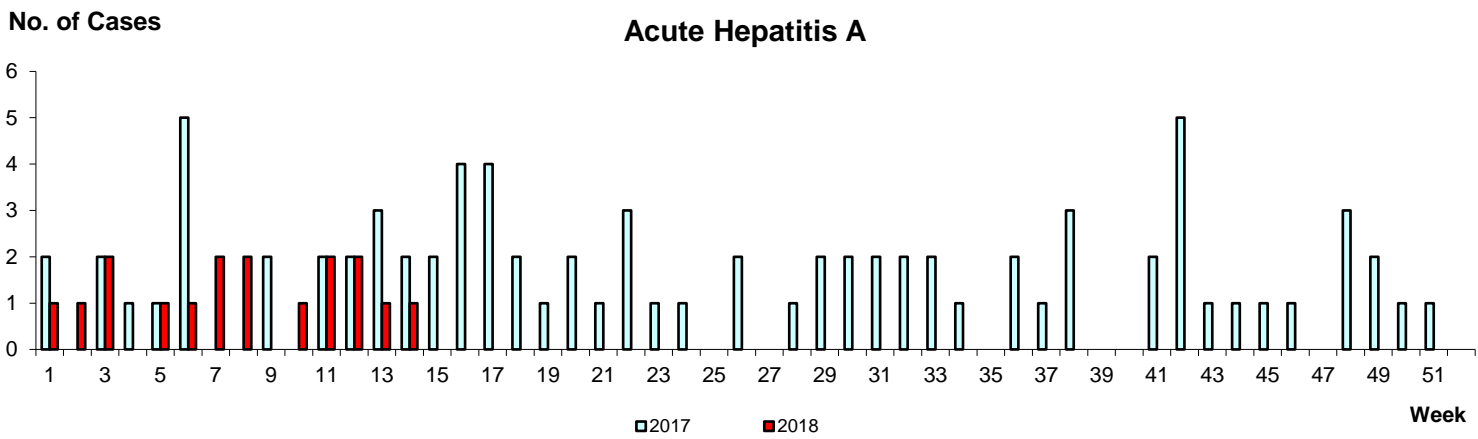
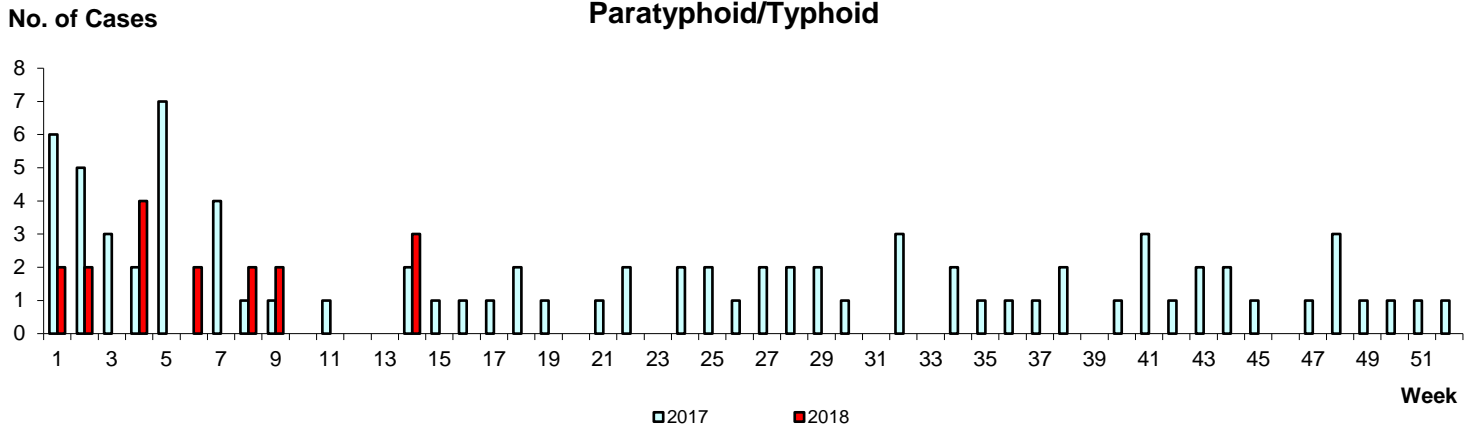
The proportion of patients with influenza-like illness (ILI) among the polyclinic attendances for ARI is 2.1%. The overall positivity rate for influenza among ILI samples (n=309) in the community was 23.3% in the past 4 weeks. Of the specimens tested positive for influenza in March 2018, these were positive for influenza B (52.3%), influenza A(H1N1)pdm09 (34.9%) and influenza A(H3N2) (12.8%).

Monthly Influenza Surveillance



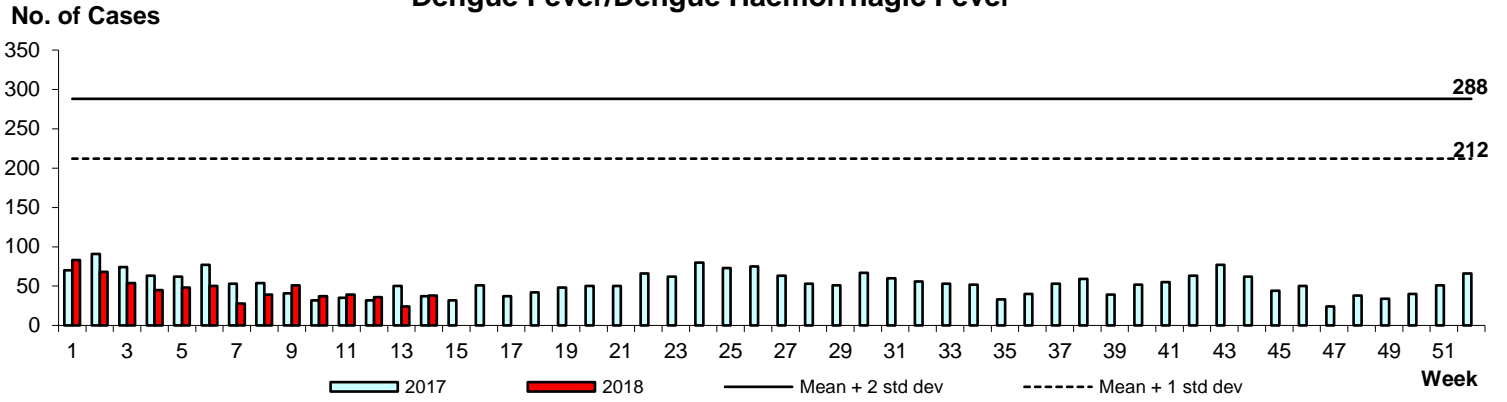
Based on influenza-like illness (ILI) samples from GPs and polyclinics

WEEKLY INCIDENCE OF FOOD/WATER-BORNE DISEASES, 2017-2018

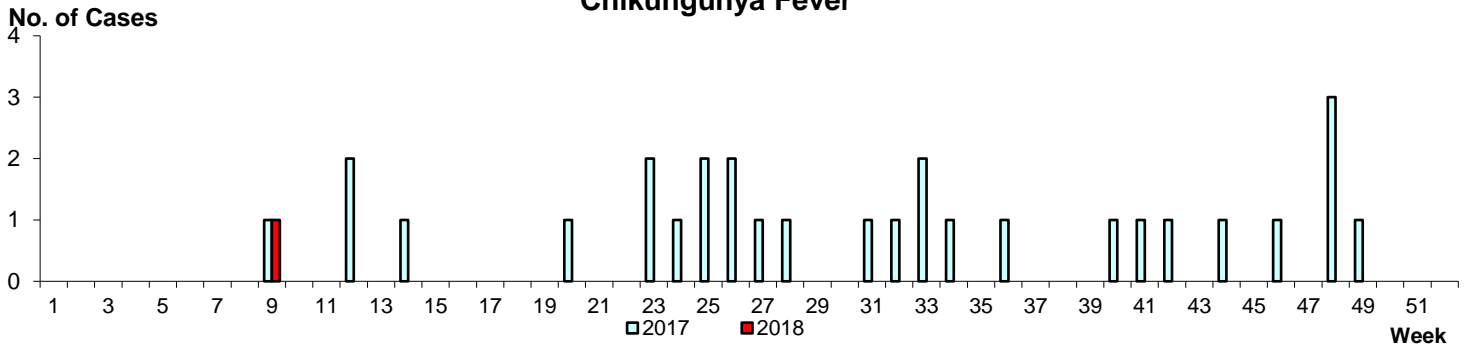


WEEKLY INCIDENCE OF VECTOR-BORNE DISEASES, 2017-2018

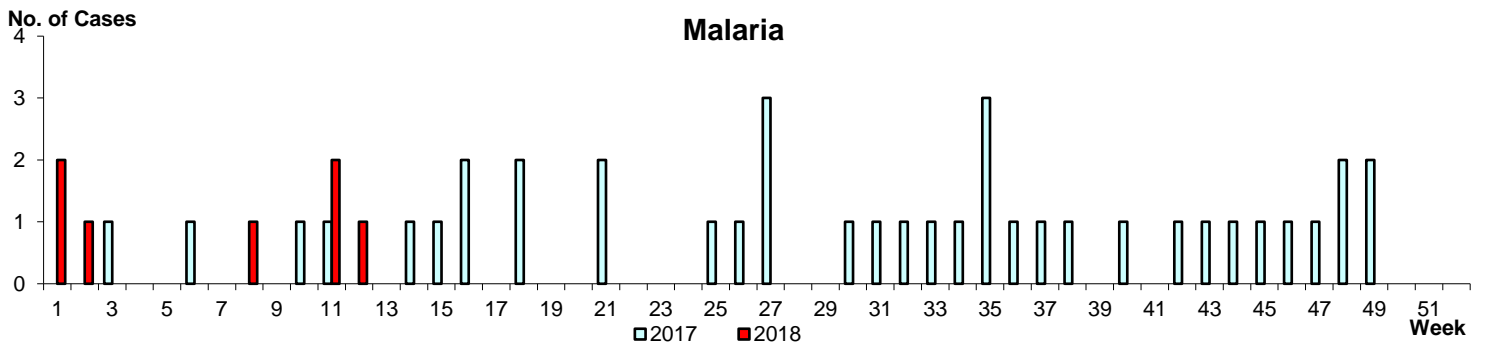
Dengue Fever/Dengue Haemorrhagic Fever



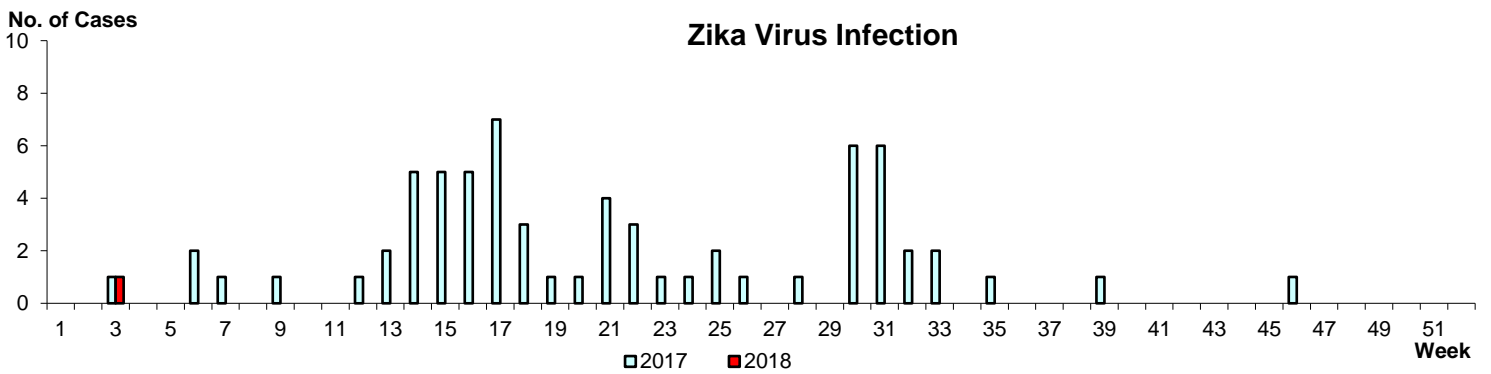
Chikungunya Fever



Malaria



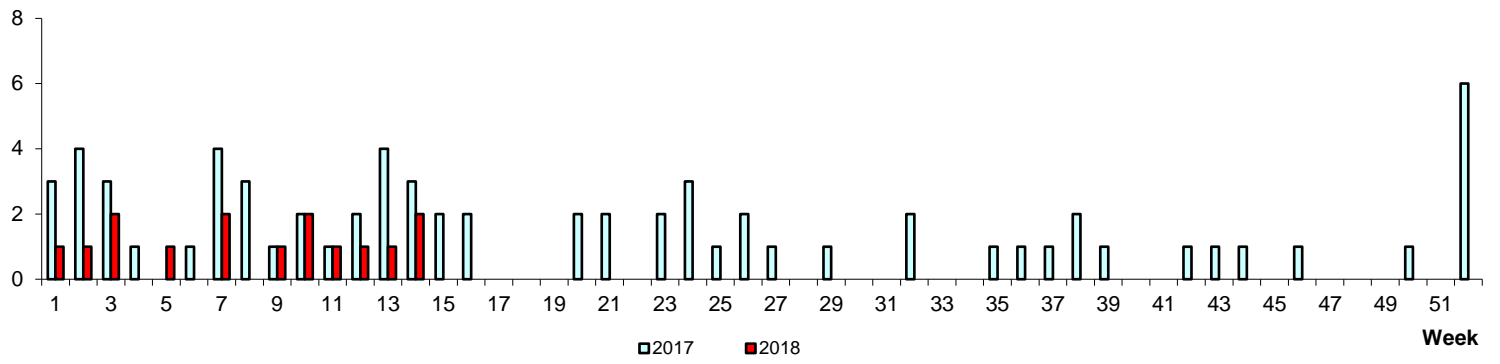
Zika Virus Infection



WEEKLY INCIDENCE OF AIR/DROPLET-BORNE DISEASES, 2017-2018

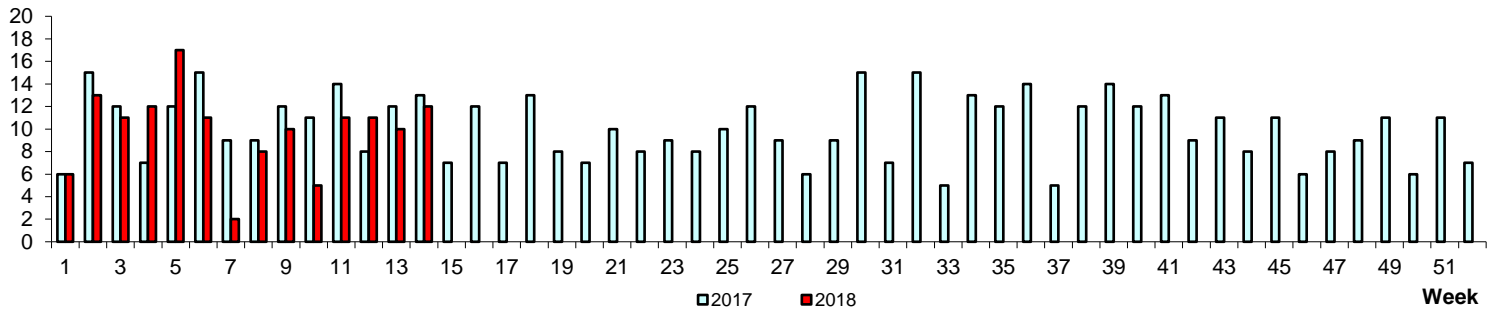
No. of Cases

Measles



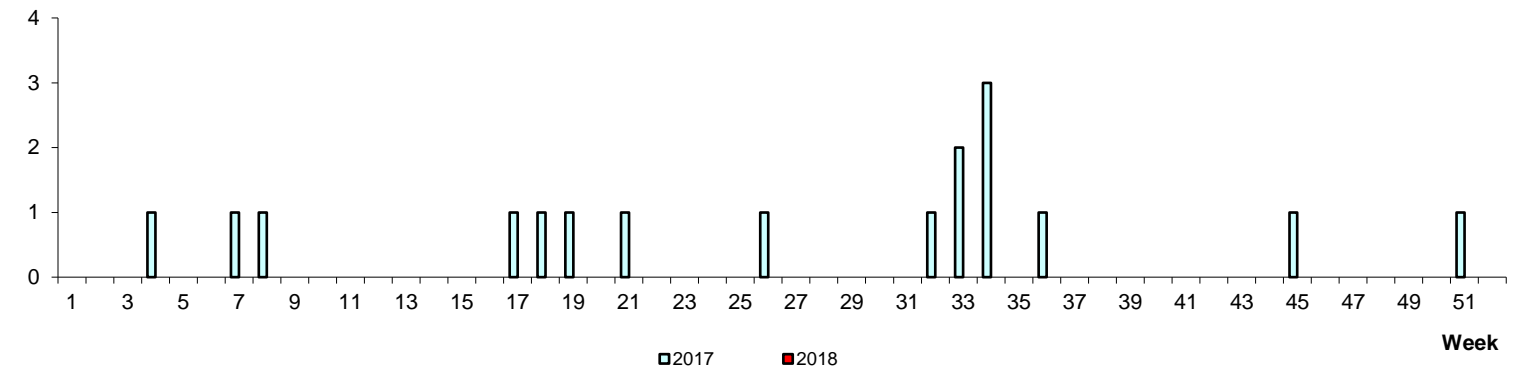
No. of Cases

Mumps



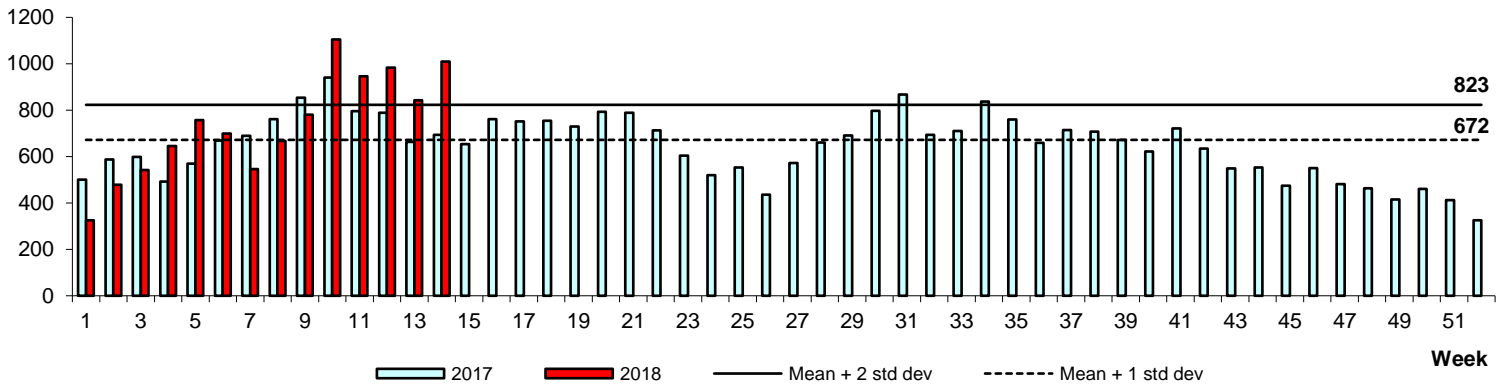
No. of Cases

Rubella



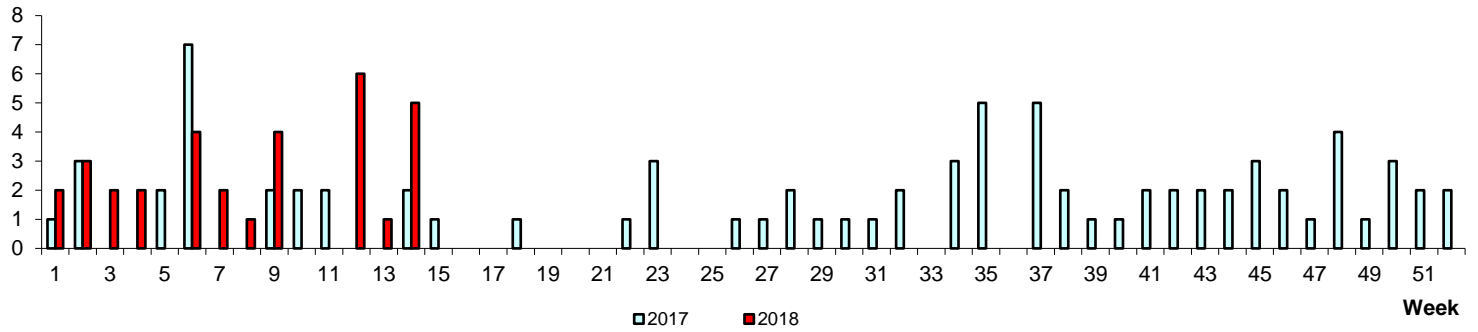
Hand, Foot & Mouth Disease

No. of Cases



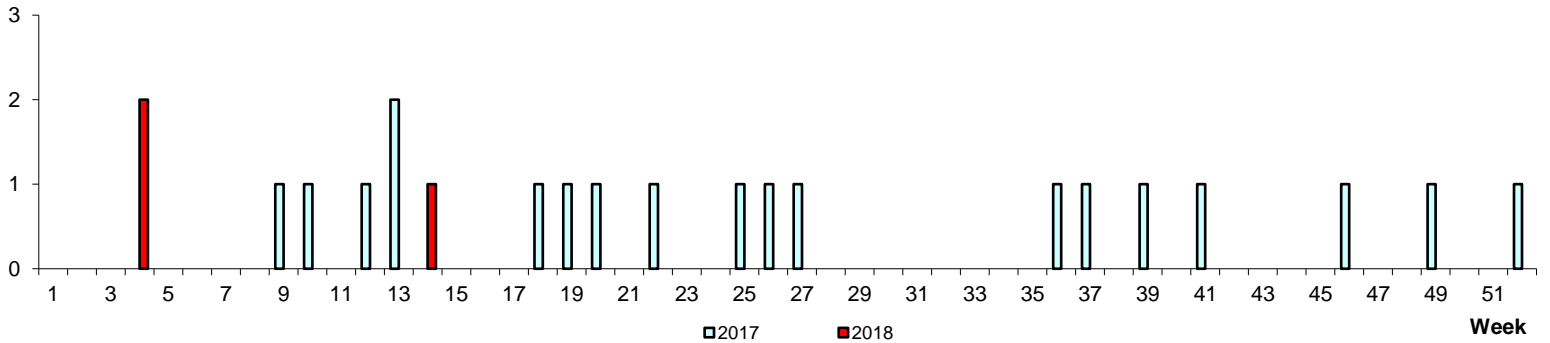
No. of Cases

Pertussis



No. of Cases

Legionellosis



POLYCLINIC ATTENDANCES, 2017-2018

