



WEEKLY INFECTIOUS DISEASE BULLETIN
EPIDEMIOLOGICAL WEEK 15 8 - 14 Apr 2018

	E Week 15			Cumulative first 15 Weeks		Median 2013 -2017
	2018*	2017	Median 2013 -2017	2018	2017	
FOOD/WATER-BORNE DISEASES						
Acute Hepatitis A	2	2	1	19	24	24
Acute Hepatitis E	2	1	2	14	18	18
Campylobacteriosis	13	4	9	123	107	125
Cholera	0	0	0	1	0	0
Paratyphoid	0	0	0	5	6	10
Poliomyelitis	0	0	0	0	0	0
Salmonellosis	32	42	41	407	601	471
Typhoid	0	1	1	12	27	23
VECTOR-BORNE DISEASES						
Chikungunya Fever	0	0	1	1	4	10
Dengue Fever	38	32	224	675	797	4259
Dengue Haemorrhagic Fever	0	0	0	3	6	7
Japanese Encephalitis [^]	0	0	NA	0	0	NA
Leptospirosis [^]	2	1	NA	10	13	NA
Malaria	1	1	1	8	6	9
Murine Typhus [^]	0	0	NA	0	0	NA
Nipah virus infection	0	0	0	0	0	0
Plague	0	0	0	0	0	0
Yellow Fever	0	0	0	0	0	0
Zika Virus Infection	0	5	NA	1	18	NA
AIR/DROPLET-BORNE DISEASES						
Avian Influenza	0	0	NA	0	0	NA
Diphtheria	0	0	0	0	0	0
Ebola Virus Disease	0	0	NA	0	0	NA
<i>Haemophilus influenzae</i> type b	0	0	0	0	4	1
Hand, Foot And Mouth Disease	985	653	633	11313	10255	8143
Legionellosis	0	0	1	3	5	6
Measles	2	2	2	16	34	18
Melioidosis	1	0	0	9	15	14
Meningococcal Disease	0	1	0	3	5	1
Mumps	11	7	11	150	162	156
Pertussis	5	1	1	37	22	18
Pneumococcal Disease (invasive)	1	2	2	35	42	40
Rubella	0	0	0	0	3	5
Severe acute respiratory syndrome	0	0	0	0	0	0
Tetanus [^]	0	0	0	1	0	
OTHER DISEASES						
Acute hepatitis B	1	0	1	14	13	16
Acute hepatitis C	0	0	0	6	4	4
Botulism [^]	0	0	NA	1	0	NA
MERS-CoV						
Suspect cases tested	0	NA	NA	73	72	NA
Other patients tested	1	NA	NA	33	57	NA
POLYCLINIC ATTENDANCES - AVERAGE DAILY NUMBER						
Acute upper respiratory infections	2959	3164	2469			NA
Acute conjunctivitis	101	99	92			NA
Acute Diarrhoea	601	548	475			NA
Chickenpox	16	22	NA			NA
HIV/STI/TB NOTIFICATIONS						
	2018	Mar		Cumulative 2018		
HIV/AIDS		29		79		
Legally Notifiable STIs		807		2483		
Tuberculosis		142		408		

* Preliminary figures, subject to revision when more information is available.

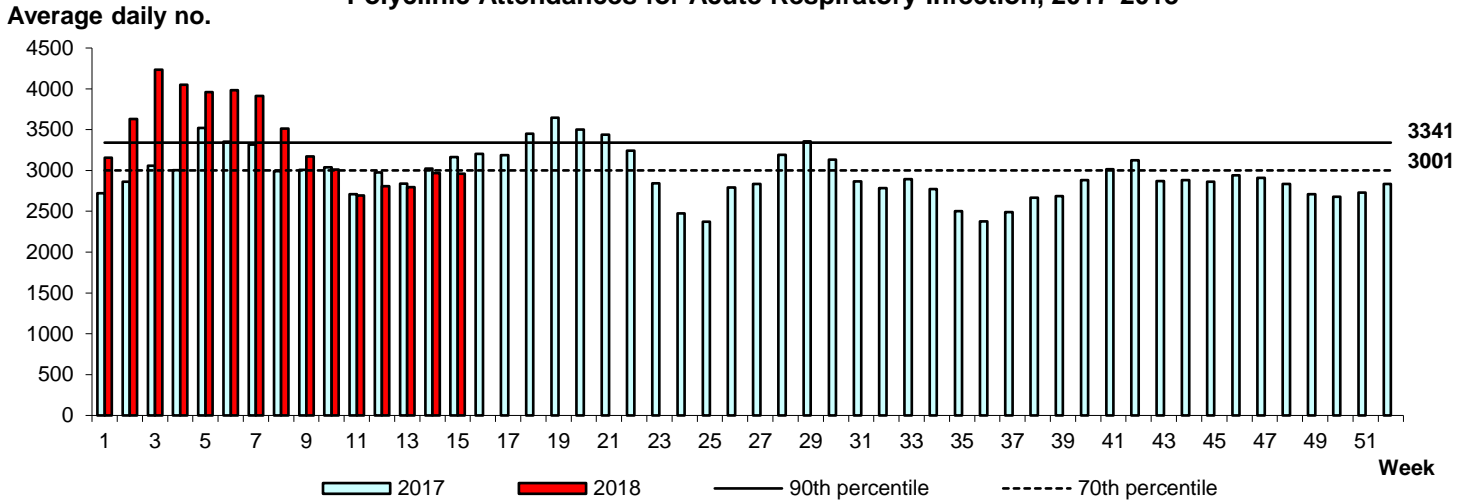
[^] Added to the list of notifiable diseases as of 28 Sep 2016

Influenza Situation in Singapore 2018

Influenza indicators for E-week 15 (8 - 14 Apr 2018) are as follows:

The average daily number of patients seeking treatment in the polyclinics for ARI decreased from 2,968 (over 5.5 working days) in E-week 14 to 2,959 (over 5.5 working days) in E-week 15.

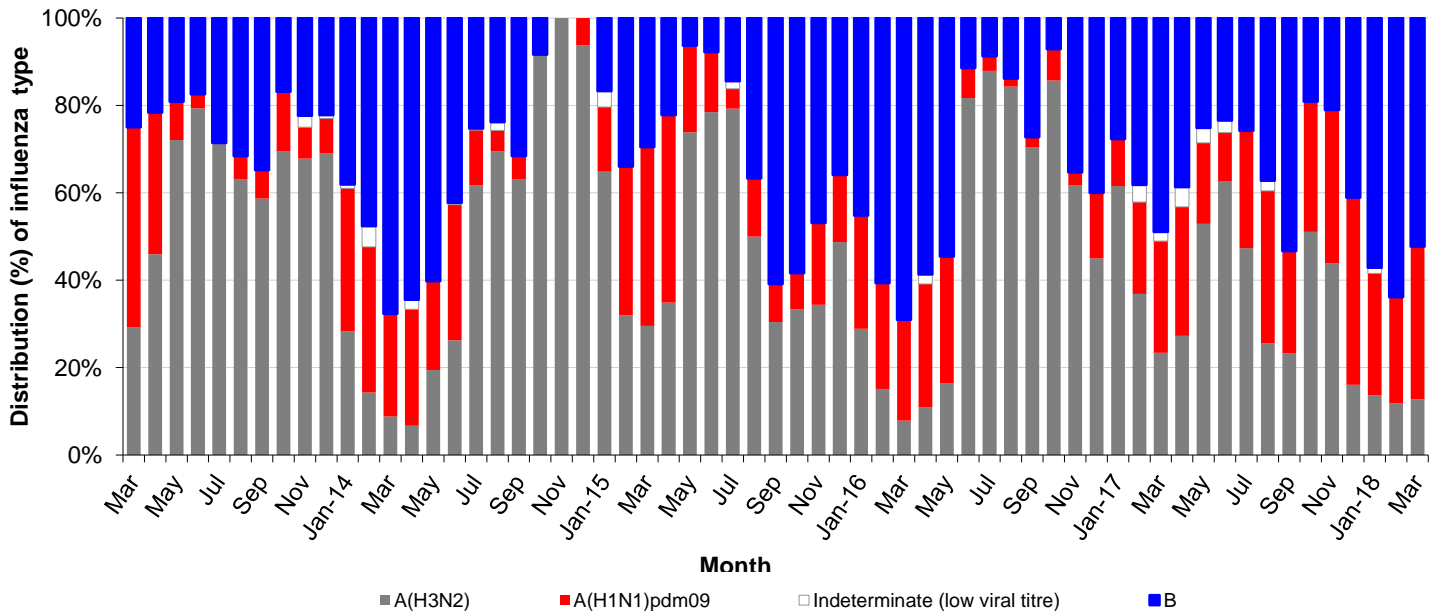
Polyclinic Attendances for Acute Respiratory Infection, 2017-2018



The proportion of patients with influenza-like illness (ILI) among the polyclinic attendances for ARI is 2.0%.

The overall positivity rate for influenza among ILI samples (n=295) in the community was 21.7% in the past 4 weeks. Of the specimens tested positive for influenza in March 2018, these were positive for influenza B (52.3%), influenza A(H1N1)pdm09 (34.9%) and influenza A(H3N2) (12.8%).

Monthly Influenza Surveillance

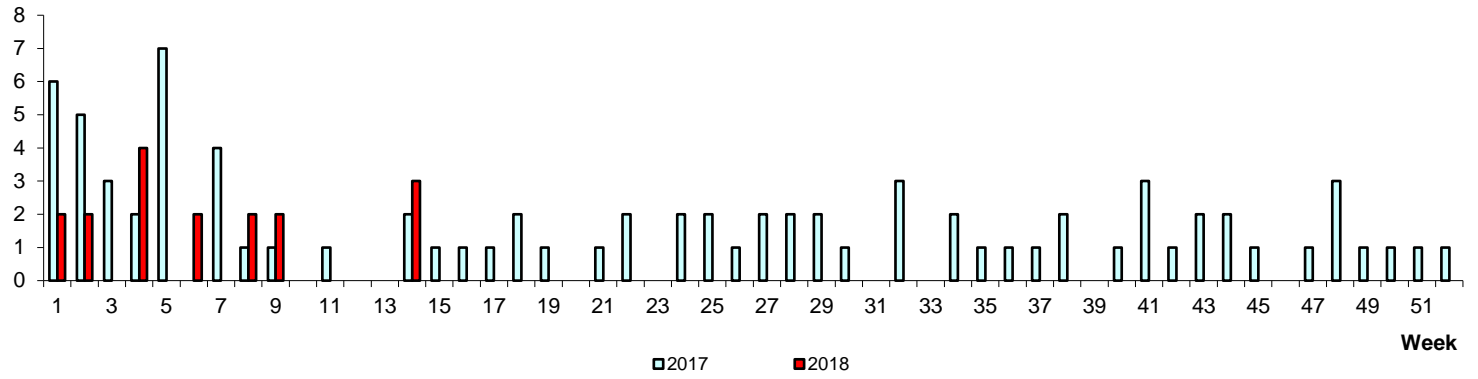


Based on influenza-like illness (ILI) samples from GPs and polyclinics

WEEKLY INCIDENCE OF FOOD/WATER-BORNE DISEASES, 2017-2018

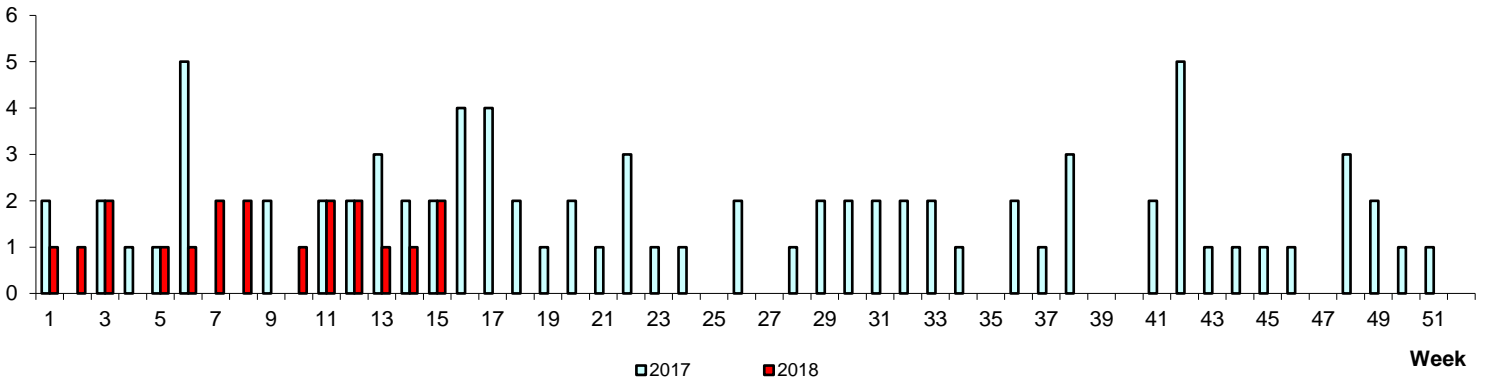
No. of Cases

Paratyphoid/Typhoid



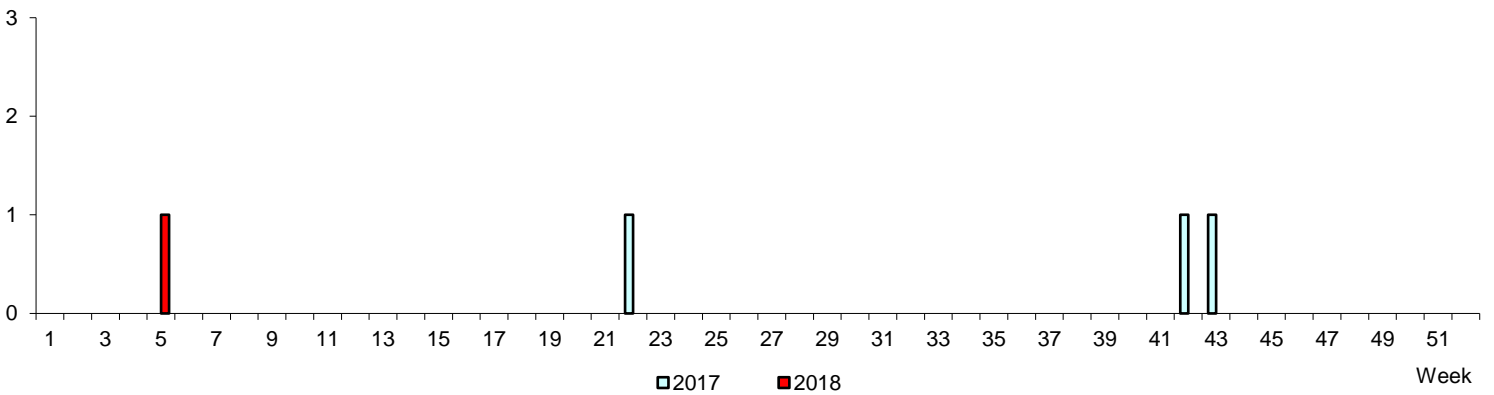
No. of Cases

Acute Hepatitis A



No. of Cases

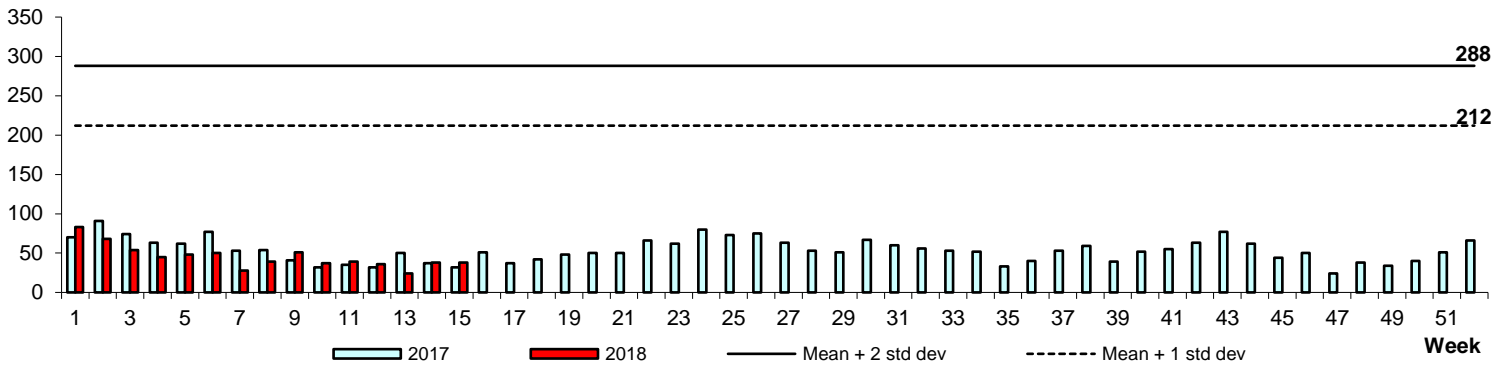
Cholera



WEEKLY INCIDENCE OF VECTOR-BORNE DISEASES, 2017-2018

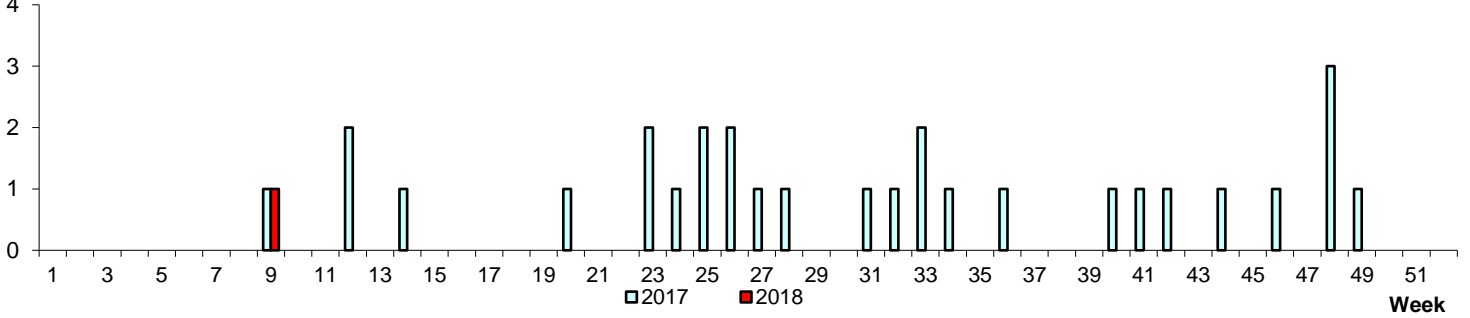
Dengue Fever/Dengue Haemorrhagic Fever

No. of Cases



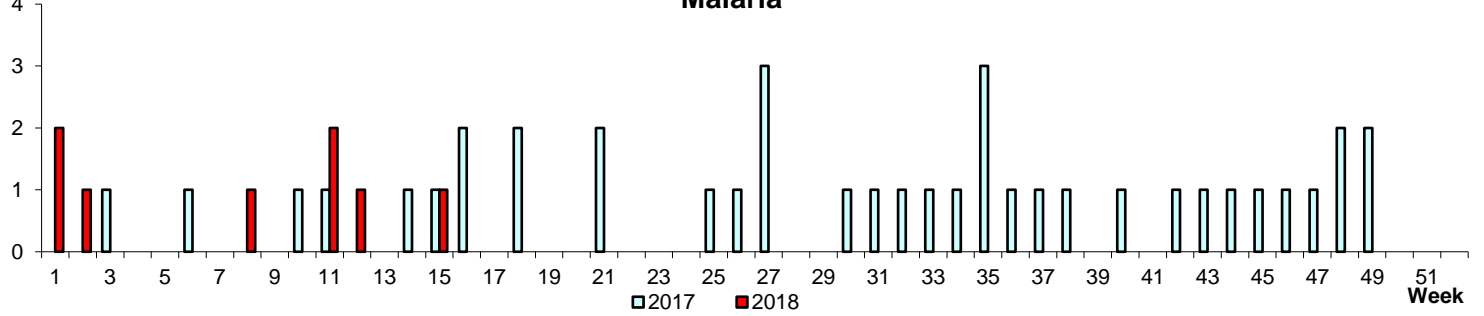
Chikungunya Fever

No. of Cases



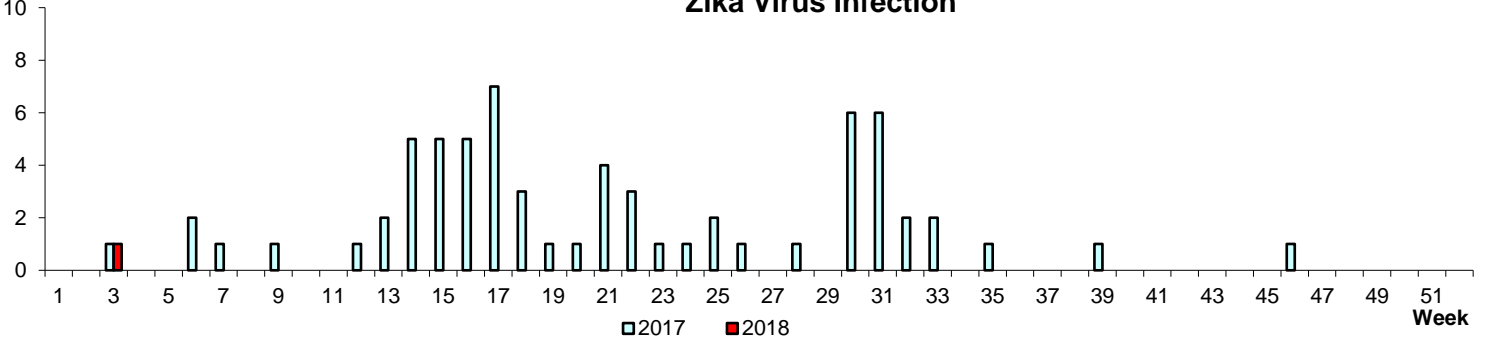
Malaria

No. of Cases



Zika Virus Infection

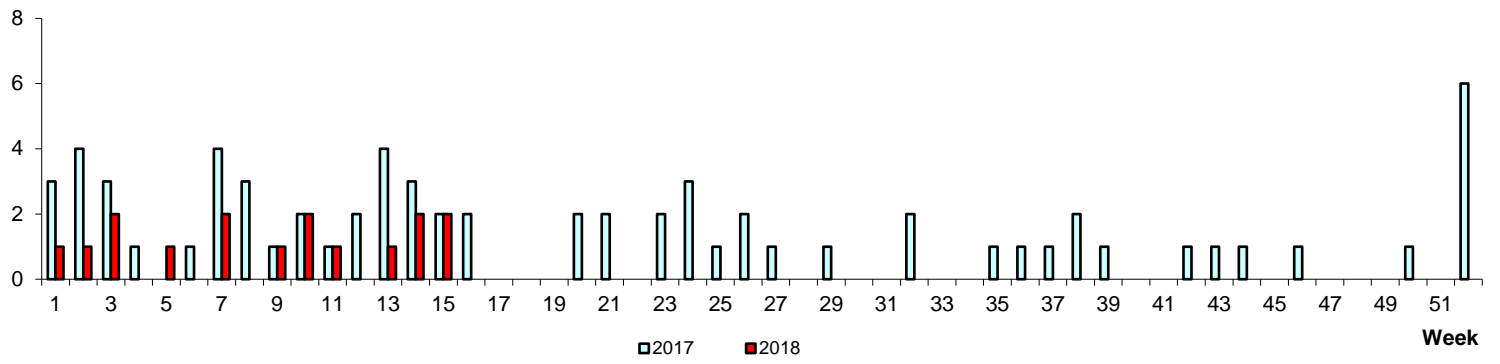
No. of Cases



WEEKLY INCIDENCE OF AIR/DROPLET-BORNE DISEASES, 2017-2018

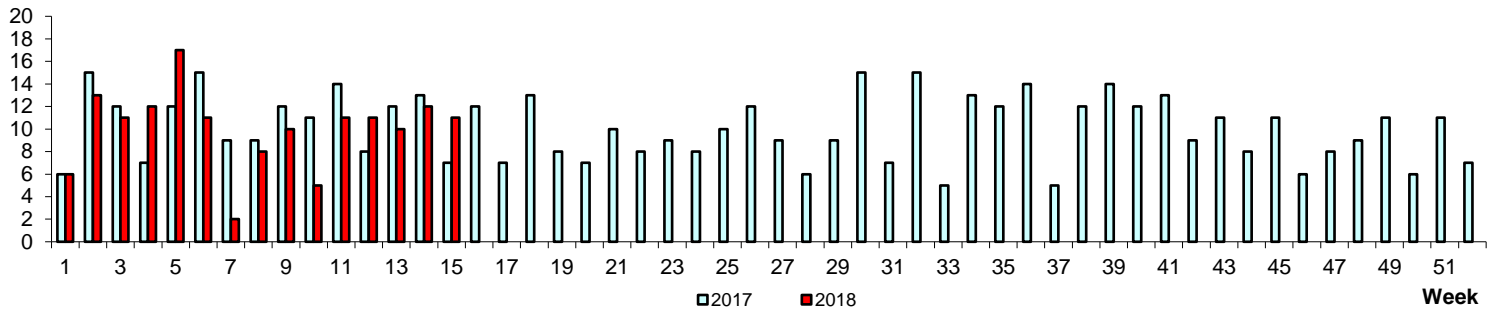
No. of Cases

Measles



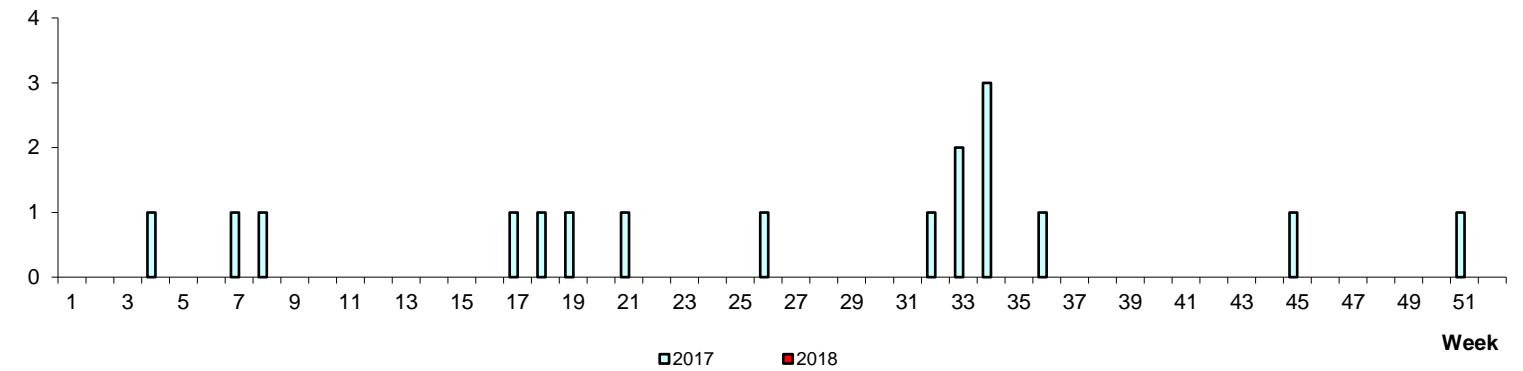
No. of Cases

Mumps



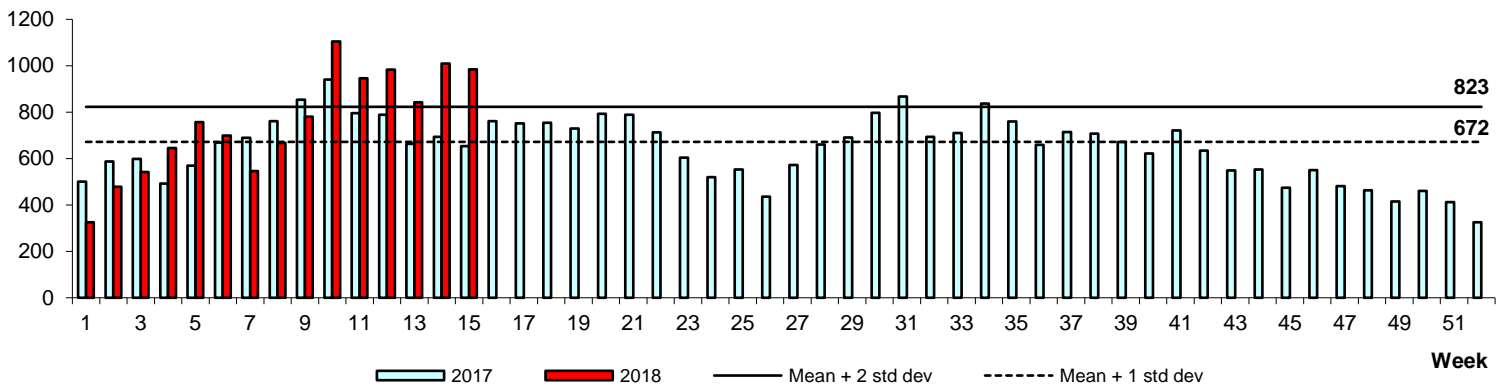
No. of Cases

Rubella



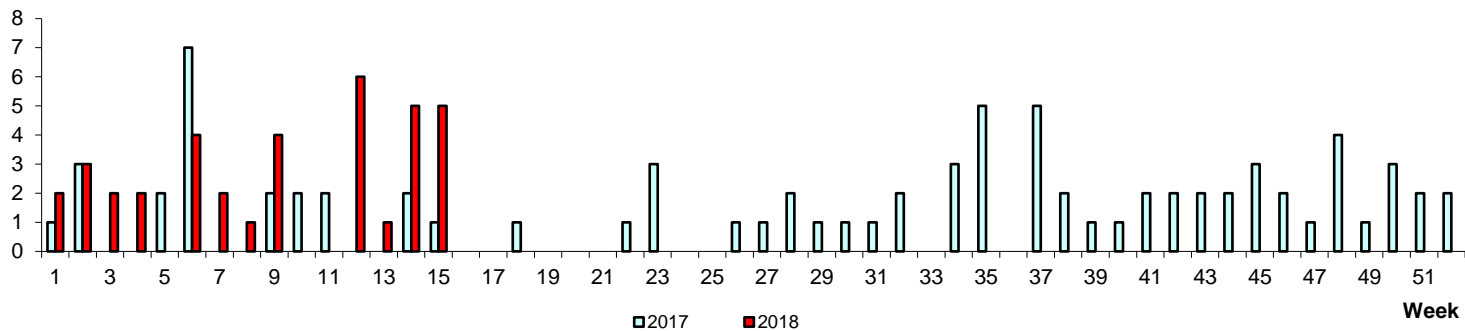
Hand, Foot & Mouth Disease

No. of Cases



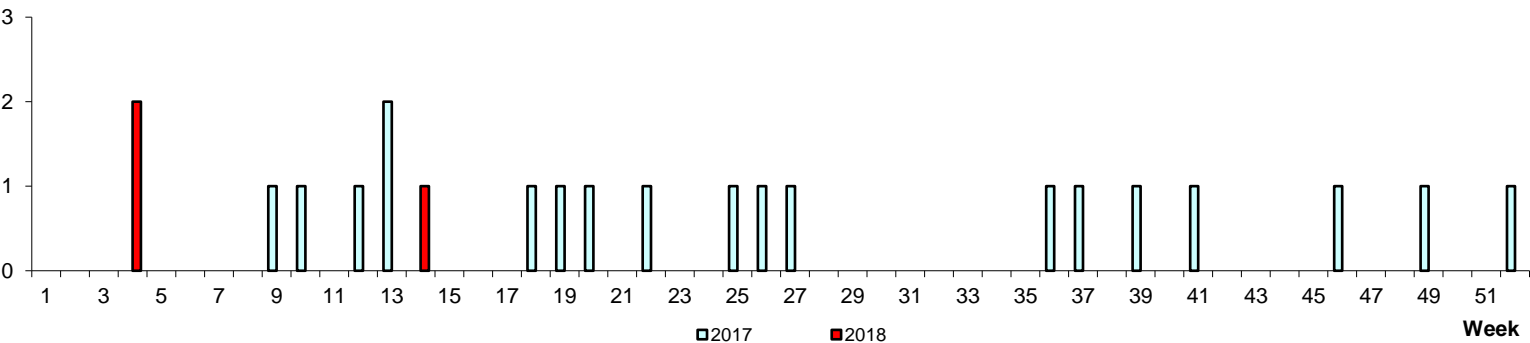
No. of Cases

Pertussis



No. of Cases

Legionellosis



POLYCLINIC ATTENDANCES, 2017-2018

