



WEEKLY INFECTIOUS DISEASE BULLETIN
EPIDEMIOLOGICAL WEEK 16 15 - 21 Apr 2018

	E Week 16			Cumulative first 16 Weeks		
	2018*	2017	Median 2013 -2017	2018	2017	Median 2013 -2017
FOOD/WATER-BORNE DISEASES						
Acute Hepatitis A	2	4	1	21	28	28
Acute Hepatitis E	2	0	1	14	18	18
Campylobacteriosis	4	8	13	126	115	138
Cholera	0	0	0	1	0	0
Paratyphoid	1	0	0	6	6	10
Poliomyelitis	0	0	0	0	0	0
Salmonellosis	32	31	40	438	632	511
Typhoid	1	1	1	13	28	23
VECTOR-BORNE DISEASES						
Chikungunya Fever	0	0	2	1	4	12
Dengue Fever	56	51	229	731	848	4494
Dengue Haemorrhagic Fever	0	0	0	3	6	7
Japanese Encephalitis [^]	0	0	NA	0	0	NA
Leptospirosis [^]	0	2	NA	10	15	NA
Malaria	1	2	2	9	8	10
Murine Typhus [^]	0	0	NA	0	0	NA
Nipah virus infection	0	0	0	0	0	0
Plague	0	0	0	0	0	0
Yellow Fever	0	0	0	0	0	0
Zika Virus Infection	0	5	NA	1	23	NA
AIR/DROPLET-BORNE DISEASES						
Avian Influenza	0	0	NA	0	0	NA
Diphtheria	0	0	0	0	0	0
Ebola Virus Disease	0	0	NA	0	0	NA
<i>Haemophilus influenzae</i> type b	0	0	0	0	4	1
Hand, Foot And Mouth Disease	996	761	693	12309	11016	8836
Legionellosis	0	0	0	3	5	6
Measles	1	2	2	17	36	24
Melioidosis	0	2	1	9	17	15
Meningococcal Disease	1	0	0	4	5	1
Mumps	11	12	12	161	174	167
Pertussis	4	0	0	41	22	19
Pneumococcal Disease (invasive)	1	2	2	36	44	42
Rubella	0	0	0	0	3	5
Severe acute respiratory syndrome	0	0	0	0	0	0
Tetanus [^]	0	0	0	1	0	
OTHER DISEASES						
Acute hepatitis B	0	0	1	14	13	16
Acute hepatitis C	2	1	0	8	5	4
Botulism [^]	0	0	NA	1	0	NA
MERS-CoV						
Suspect cases tested	3	NA	NA	76	75	NA
Other patients tested	2	NA	NA	35	59	NA
POLYCLINIC ATTENDANCES - AVERAGE DAILY NUMBER						
Acute upper respiratory infections	2984	3202	2534			NA
Acute conjunctivitis	91	99	85			NA
Acute Diarrhoea	575	546	471			NA
Chickenpox	19	16	NA			NA
HIV/STI/TB NOTIFICATIONS						
	2018	Mar		Cumulative 2018		
HIV/AIDS		29		79		
Legally Notifiable STIs		807		2483		
Tuberculosis		142		408		

* Preliminary figures, subject to revision when more information is available.

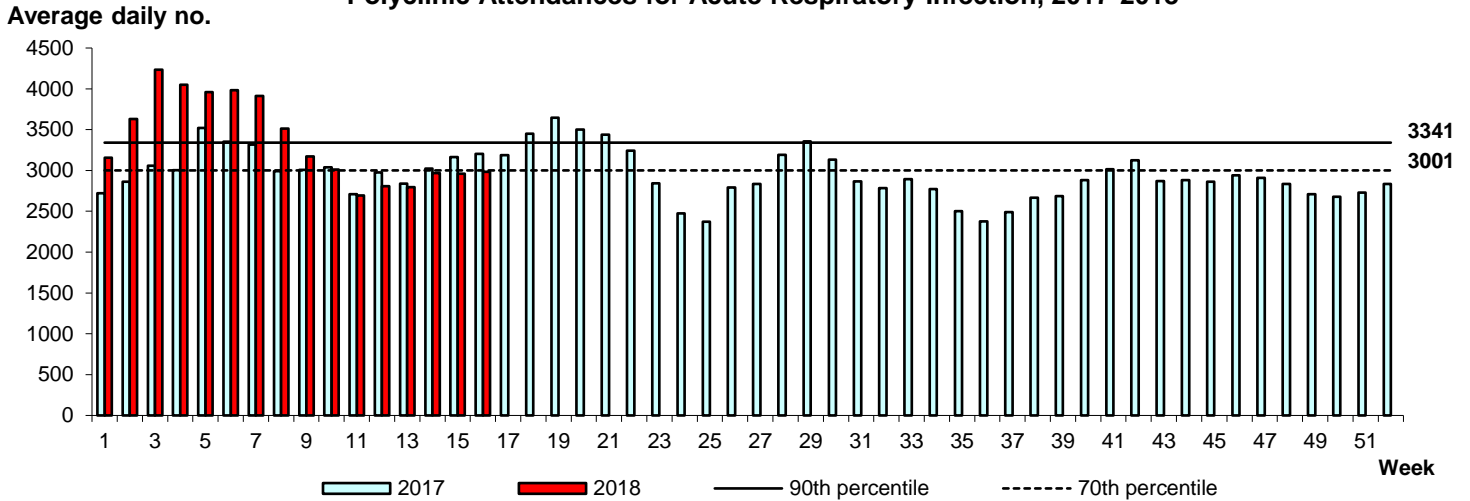
[^] Added to the list of notifiable diseases as of 28 Sep 2016

Influenza Situation in Singapore 2018

Influenza indicators for E-week 16 (15 - 21 Apr 2018) are as follows:

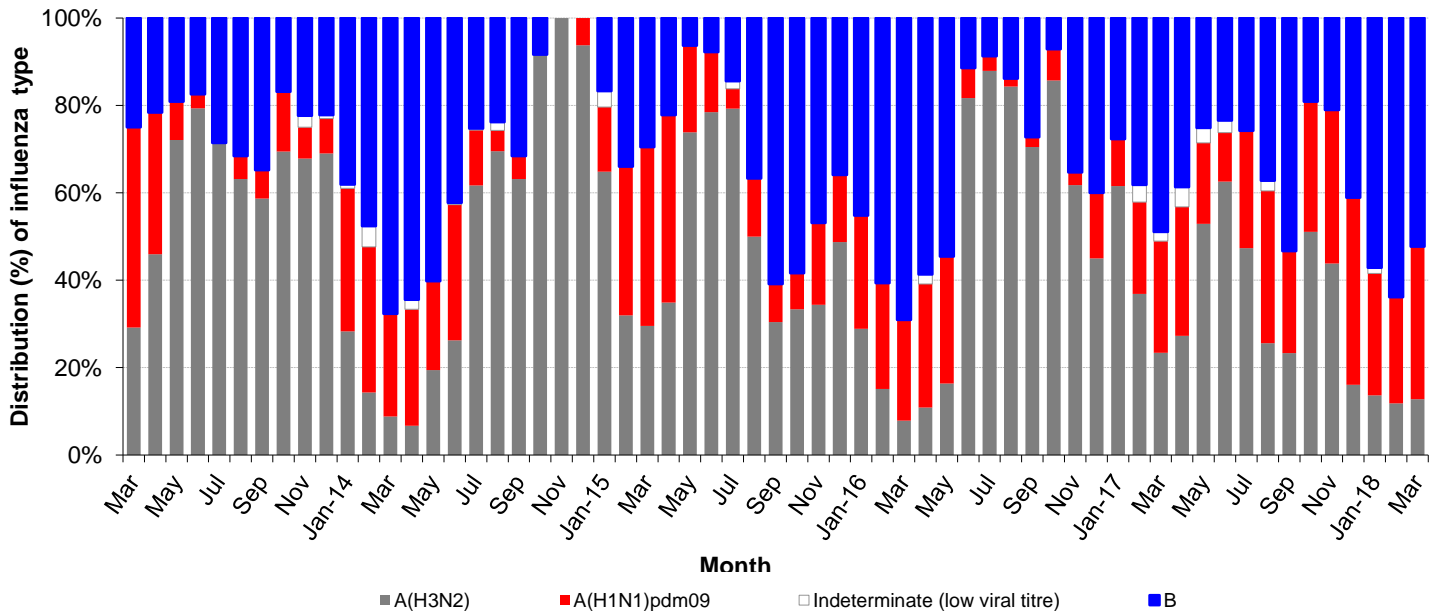
The average daily number of patients seeking treatment in the polyclinics for ARI increased from 2,959 (over 5.5 working days) in E-week 15 to 2,984 (over 5.5 working days) in E-week 16.

Polyclinic Attendances for Acute Respiratory Infection, 2017-2018



The proportion of patients with influenza-like illness (ILI) among the polyclinic attendances for ARI is 1.8%. The overall positivity rate for influenza among ILI samples (n=298) in the community was 20.8% in the past 4 weeks. Of the specimens tested positive for influenza in March 2018, these were positive for influenza B (52.3%), influenza A(H1N1)pdm09 (34.9%) and influenza A(H3N2) (12.8%).

Monthly Influenza Surveillance

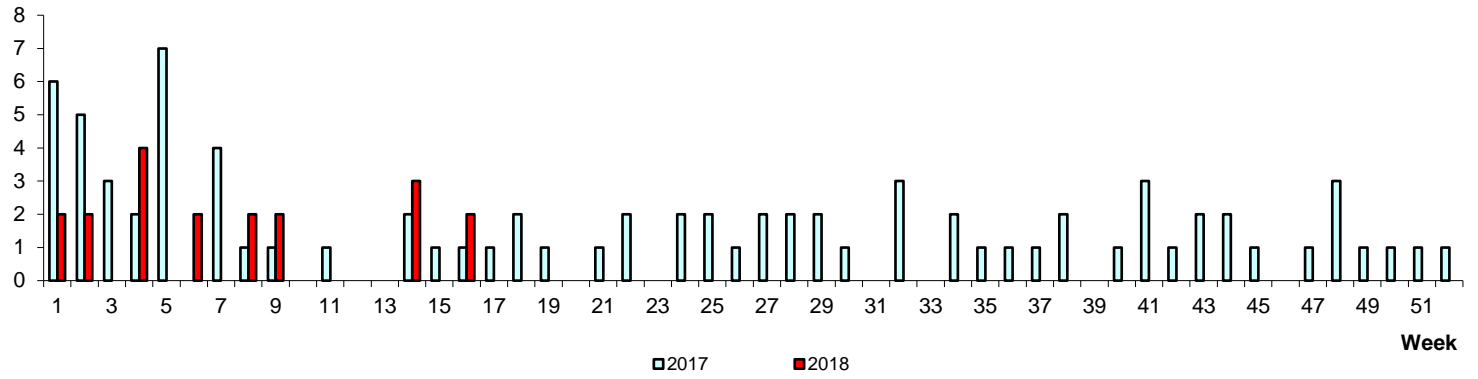


Based on influenza-like illness (ILI) samples from GPs and polyclinics

WEEKLY INCIDENCE OF FOOD/WATER-BORNE DISEASES, 2017-2018

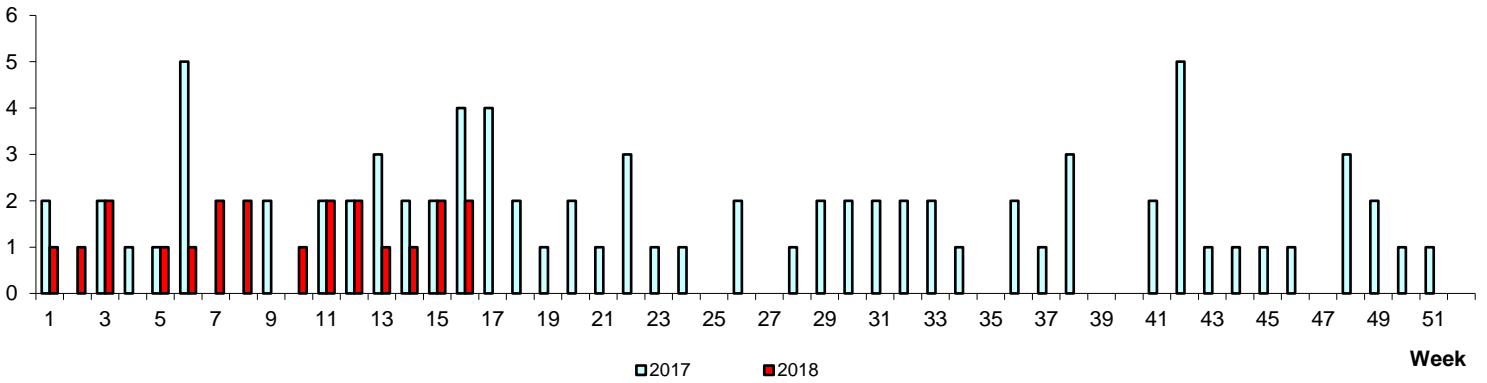
No. of Cases

Paratyphoid/Typhoid



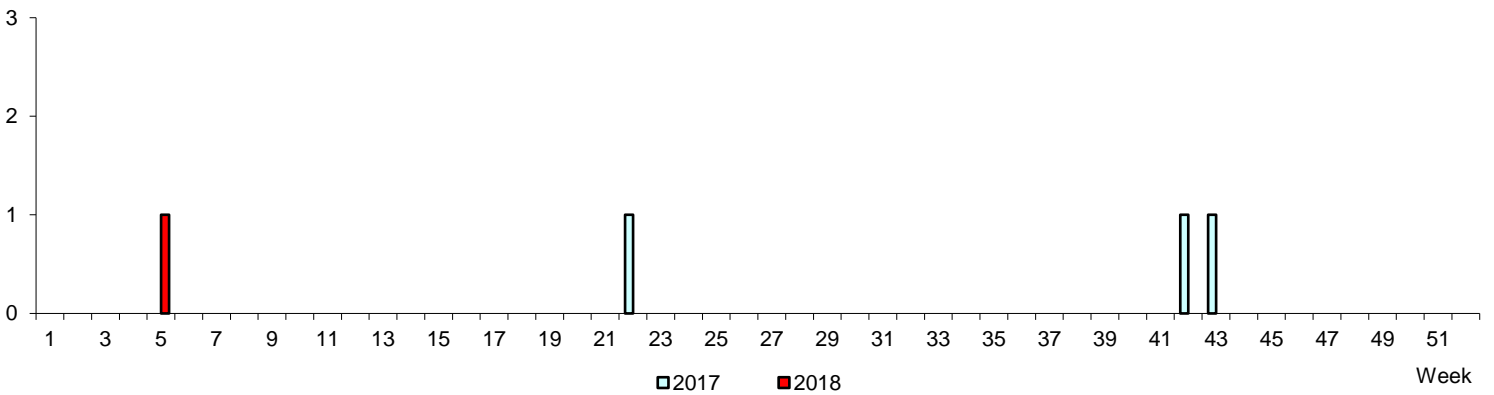
No. of Cases

Acute Hepatitis A



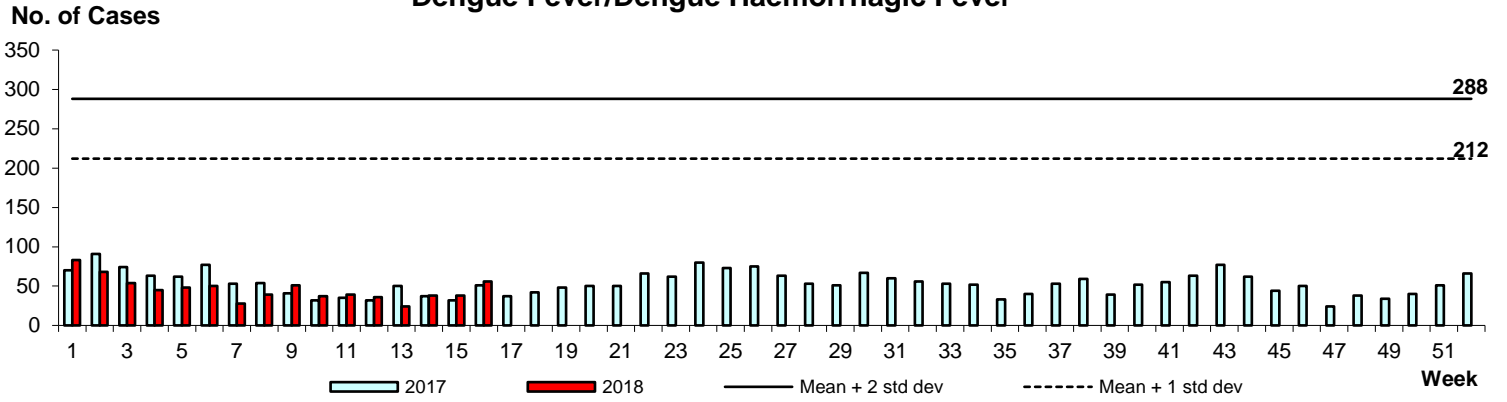
No. of Cases

Cholera

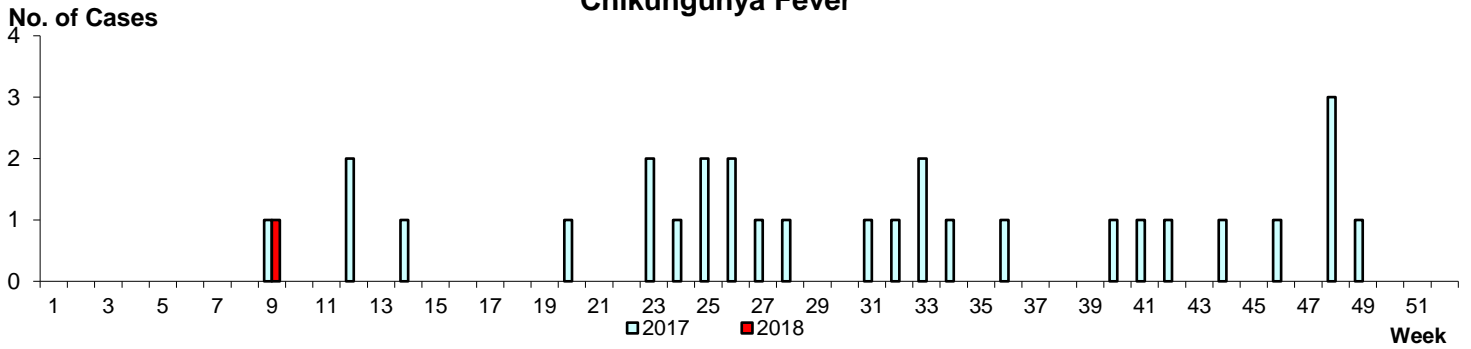


WEEKLY INCIDENCE OF VECTOR-BORNE DISEASES, 2017-2018

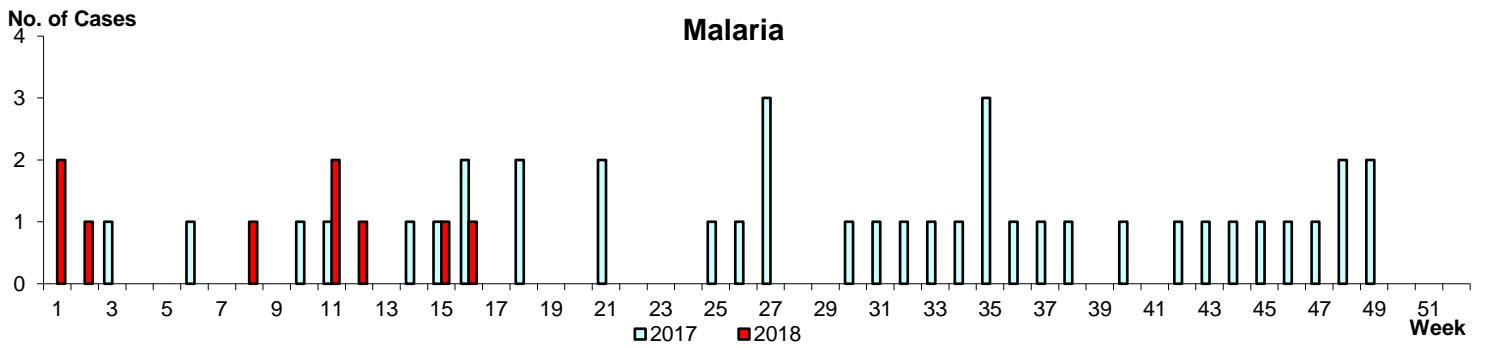
Dengue Fever/Dengue Haemorrhagic Fever



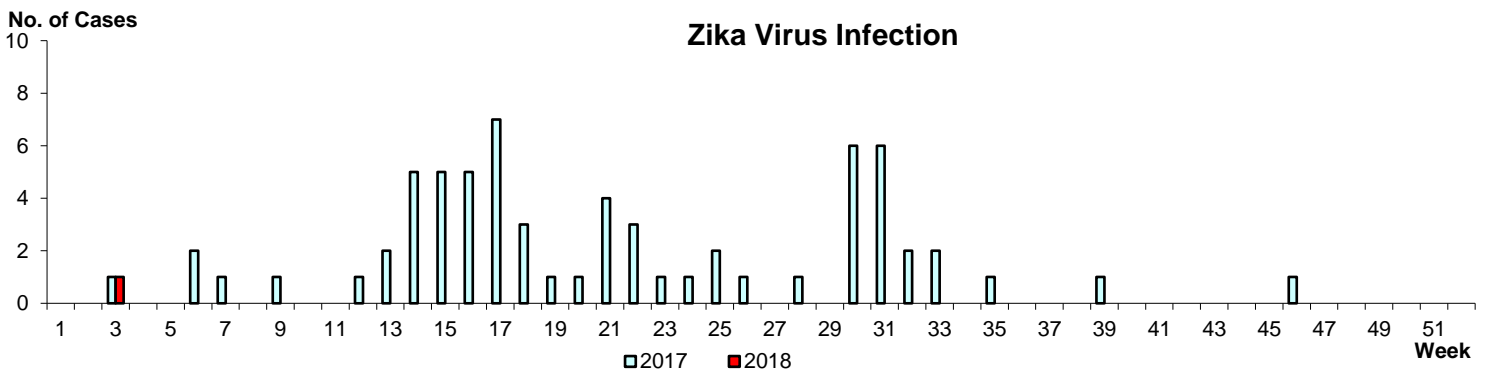
Chikungunya Fever



Malaria



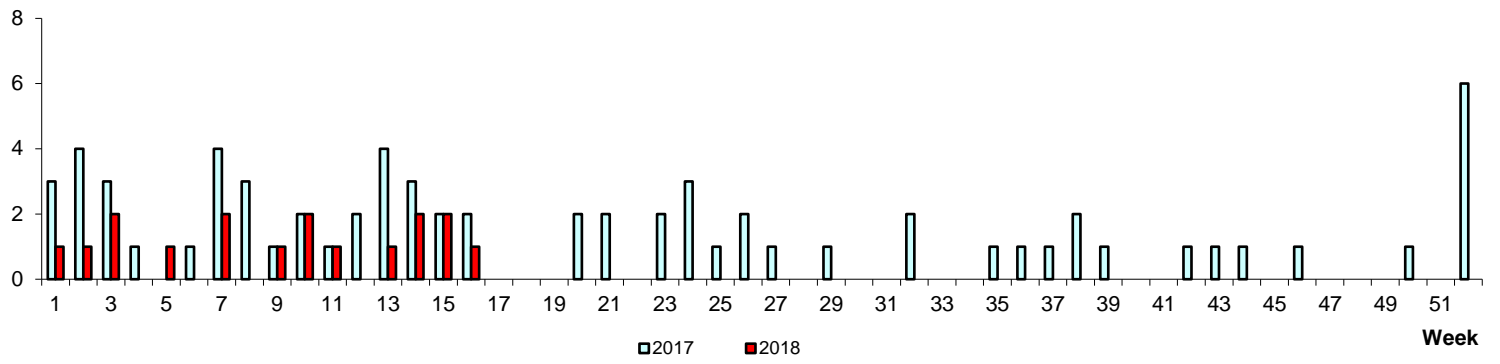
Zika Virus Infection



WEEKLY INCIDENCE OF AIR/DROPLET-BORNE DISEASES, 2017-2018

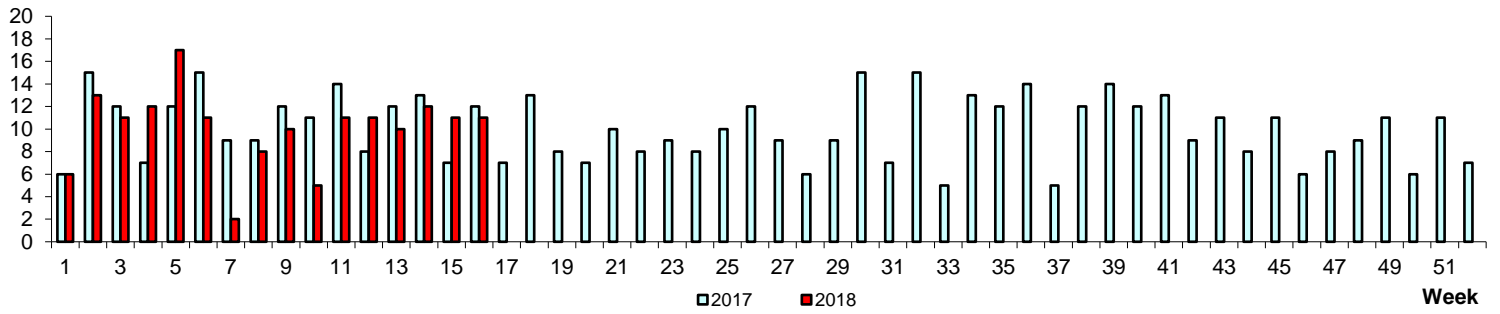
No. of Cases

Measles



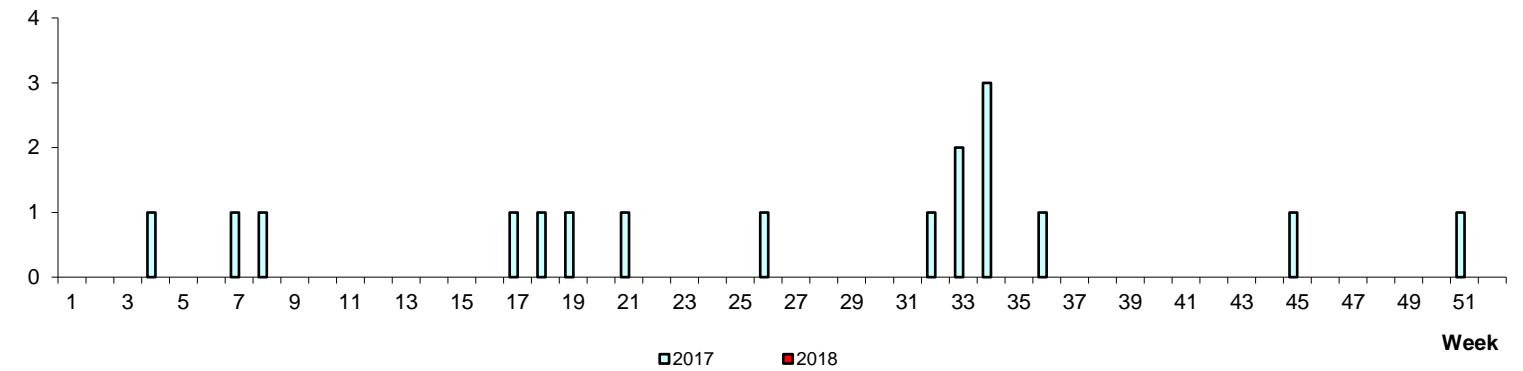
No. of Cases

Mumps



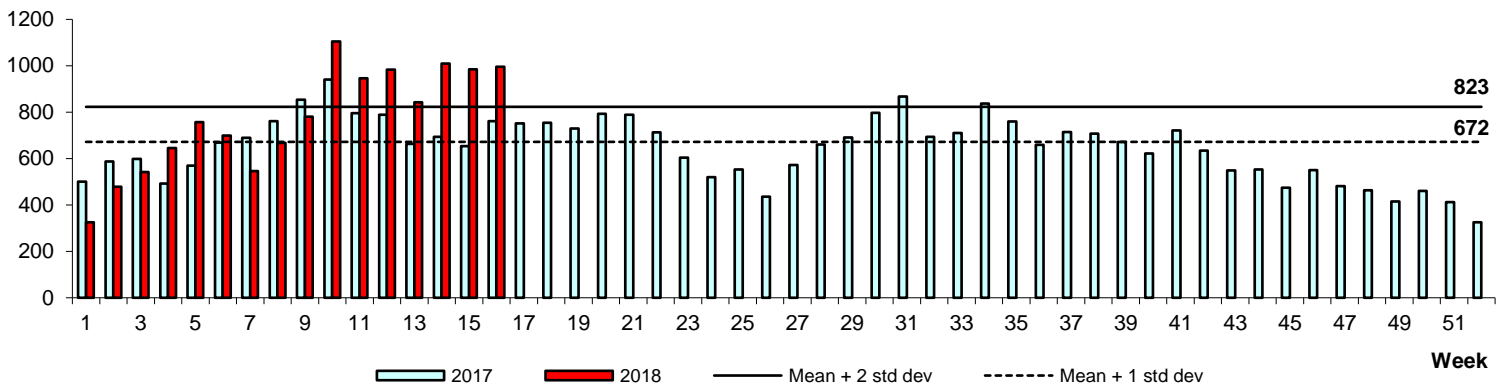
No. of Cases

Rubella



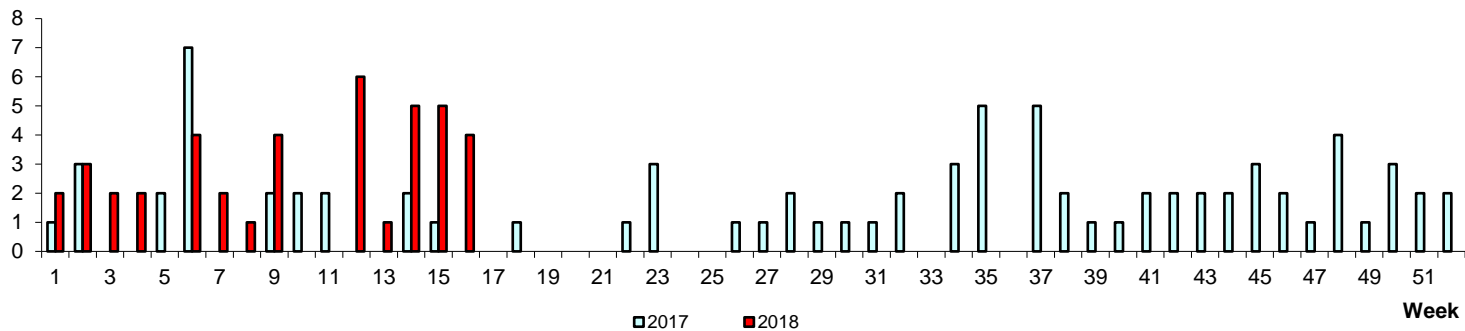
Hand, Foot & Mouth Disease

No. of Cases



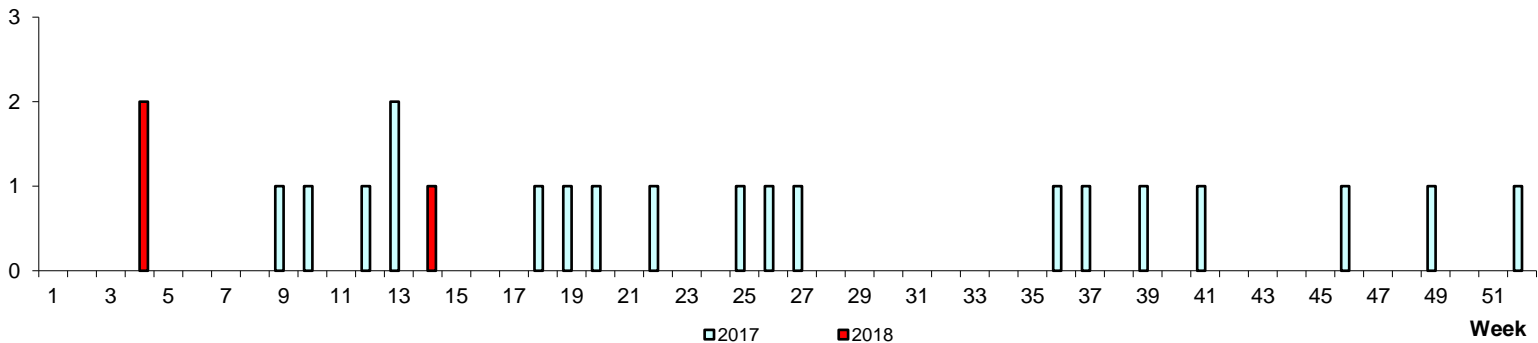
No. of Cases

Pertussis



No. of Cases

Legionellosis



POLYCLINIC ATTENDANCES, 2017-2018

