



WEEKLY INFECTIOUS DISEASE BULLETIN
EPIDEMIOLOGICAL WEEK 20 13 - 19 May 2018

	E Week 20			Cumulative first 20 Weeks		
	2018*	2017	Median 2013 -2017	2018	2017	Median 2013 -2017
FOOD/WATER-BORNE DISEASES						
Acute Hepatitis A	3	2	2	25	37	37
Acute Hepatitis E	1	2	2	28	22	22
Campylobacteriosis	6	10	10	152	151	168
Cholera	0	0	0	1	0	0
Paratyphoid	0	0	1	6	8	13
Poliomyelitis	0	0	0	0	0	0
Salmonellosis	41	40	40	585	785	686
Typhoid	0	0	1	14	30	30
VECTOR-BORNE DISEASES						
Chikungunya Fever	1	1	1	2	5	13
Dengue Fever	64	48	212	986	1023	5579
Dengue Haemorrhagic Fever	1	2	0	8	8	8
Japanese Encephalitis [^]	0	0	NA	0	0	NA
Leptospirosis [^]	0	1	NA	0	18	NA
Malaria	1	0	1	13	10	13
Murine Typhus [^]	0	0	NA	0	0	NA
Nipah virus infection	0	0	0	0	0	0
Plague	0	0	0	0	0	0
Yellow Fever	0	0	0	0	0	0
Zika Virus Infection	0	1	NA	1	35	NA
AIR/DROPLET-BORNE DISEASES						
Avian Influenza	0	0	NA	0	0	NA
Diphtheria	0	0	0	0	0	0
Ebola Virus Disease	0	0	NA	0	0	NA
<i>Haemophilus influenzae</i> type b	1	0	0	2	4	2
Hand, Foot And Mouth Disease	1022	793	793	16527	14046	11972
Legionellosis	0	1	0	5	8	8
Measles	1	2	2	21	38	38
Melioidosis	0	1	1	13	21	16
Meningococcal Disease	0	0	0	4	5	1
Mumps	17	7	9	211	209	202
Pertussis	1	0	0	52	23	23
Pneumococcal Disease (invasive)	2	3	3	46	52	52
Rubella	0	0	0	1	4	7
Severe acute respiratory syndrome	0	0	0	0	0	0
Tetanus [^]	0	0	0	1	0	
OTHER DISEASES						
Acute hepatitis B	0	1	1	19	15	20
Acute hepatitis C	0	0	0	8	5	5
Botulism [^]	0	0	NA	1	0	NA
MERS-CoV						
Suspect cases tested	4	NA	NA	88	80	NA
Other patients tested	0	NA	NA	36	68	NA
POLYCLINIC ATTENDANCES - AVERAGE DAILY NUMBER						
Acute upper respiratory infections	3075	3500	2828			NA
Acute conjunctivitis	90	88	82			NA
Acute Diarrhoea	598	565	495			NA
Chickenpox	13	15	NA			NA
HIV/STI/TB NOTIFICATIONS						
	2018	April		Cumulative 2018		
HIV/AIDS		26		105		
Legally Notifiable STIs		921		3404		
Tuberculosis		136		536		

* Preliminary figures, subject to revision when more information is available.

[^] Added to the list of notifiable diseases as of 28 Sep 2016.

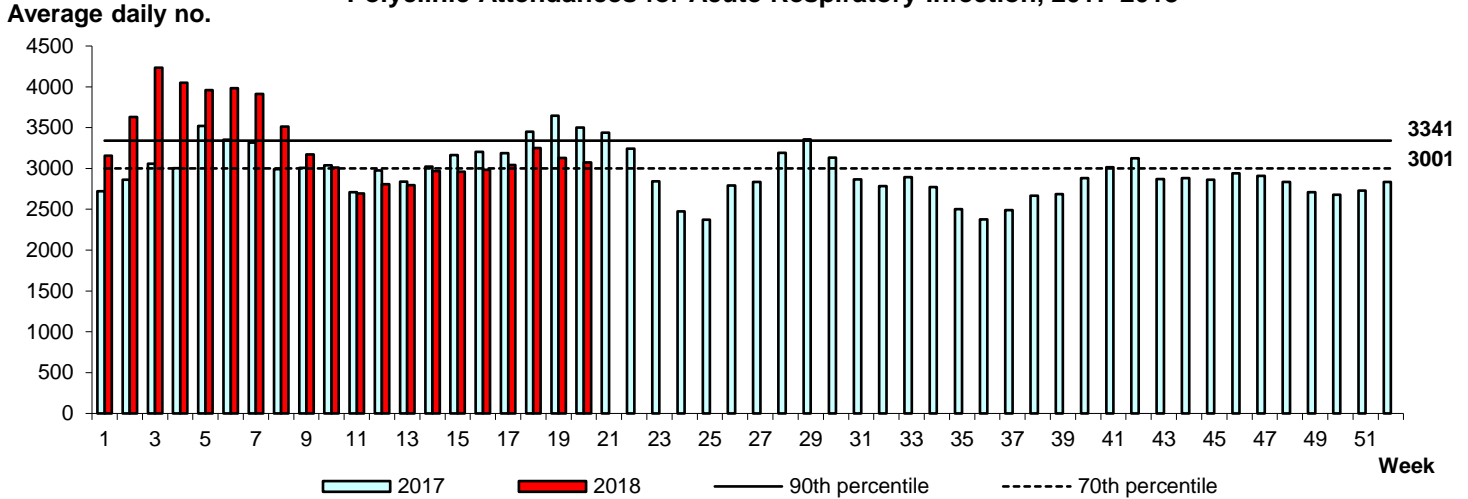
Updated case counts due to change in case definitions w.e.f. 1 Jan 2018

Influenza Situation in Singapore 2018

Influenza indicators for E-week 20 (13 May - 19 May 2018) are as follows:

The average daily number of patients seeking treatment in the polyclinics for ARI decreased from 3,131 (over 5.5 working days) in E-week 19 to 3,075 (over 5.5 working days) in E-week 20.

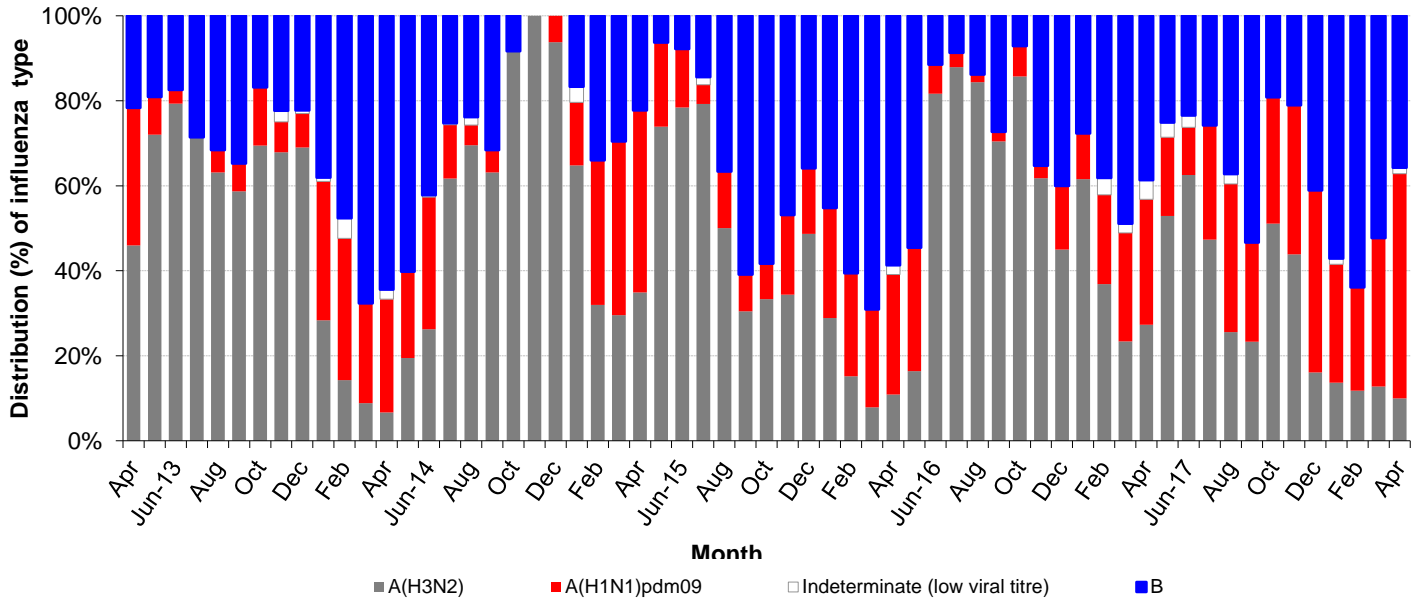
Polyclinic Attendances for Acute Respiratory Infection, 2017-2018



The proportion of patients with influenza-like illness (ILI) among the polyclinic attendances for ARI is 1.9%.

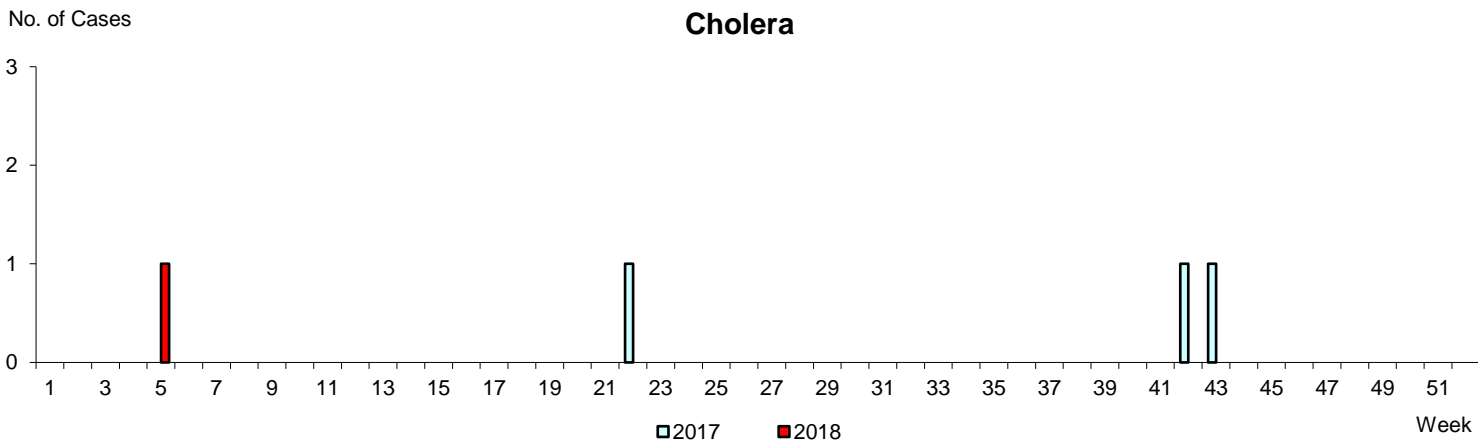
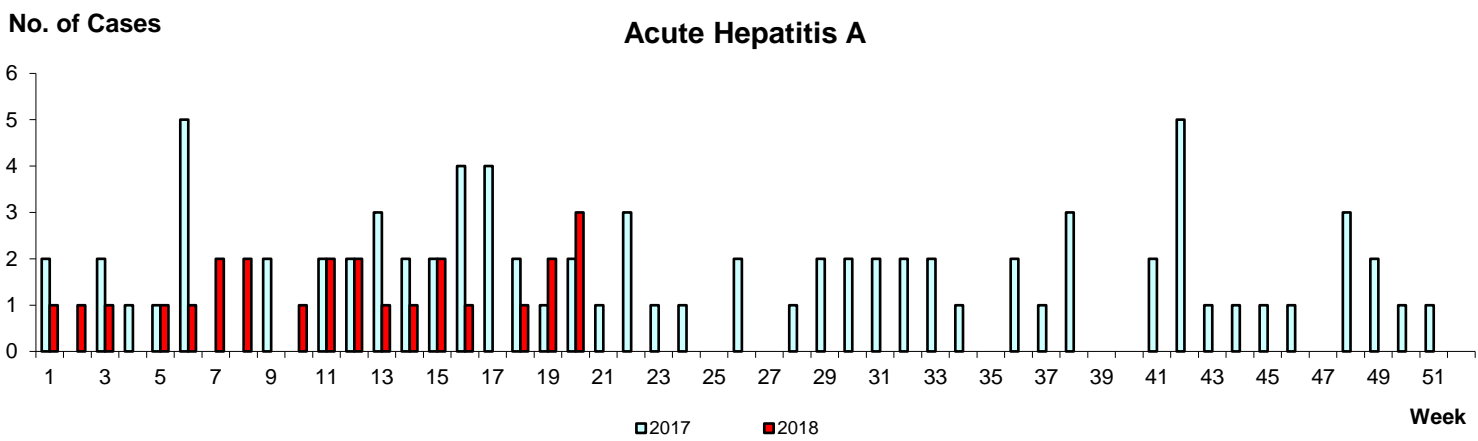
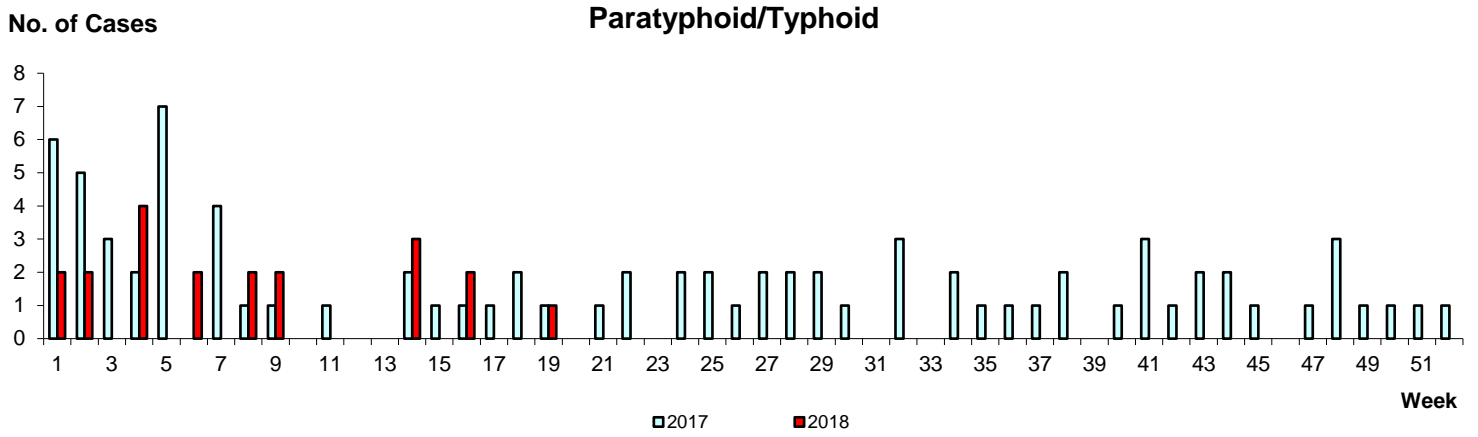
The overall positivity rate for influenza among ILI samples (n=240) in the community was 24.2% in the past 4 weeks. Of the specimens tested positive for influenza in April 2018, these were positive for influenza A(H1N1)pdm09 (52.9%), influenza B (35.7%) and influenza A(H3N2) (10.0%). 1.4% of the influenza A specimens were untypable due to low viral titre.

Monthly Influenza Surveillance



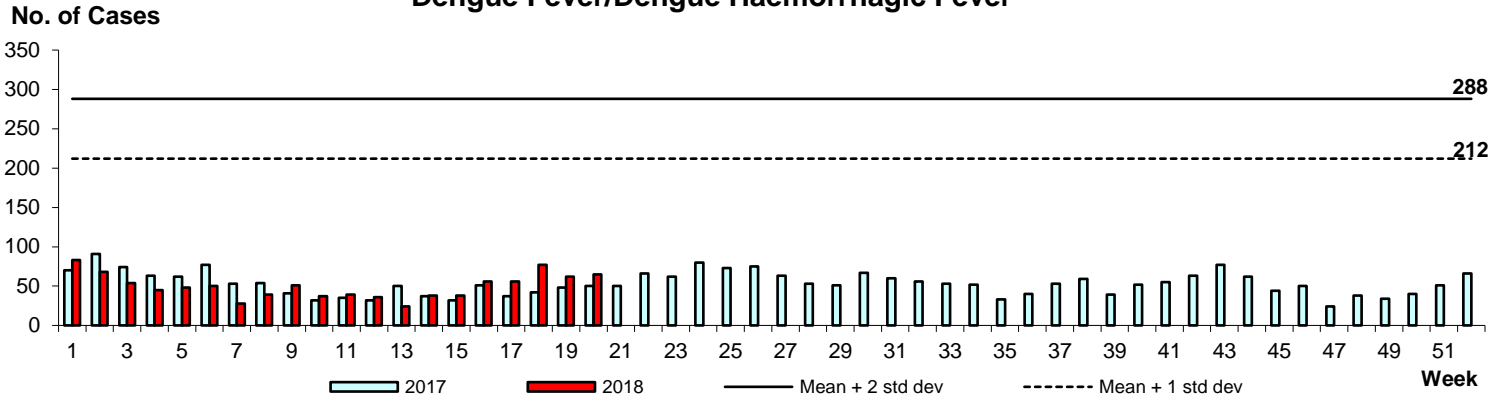
Based on influenza-like illness (ILI) samples from GPs and polyclinics

WEEKLY INCIDENCE OF FOOD/WATER-BORNE DISEASES, 2017-2018

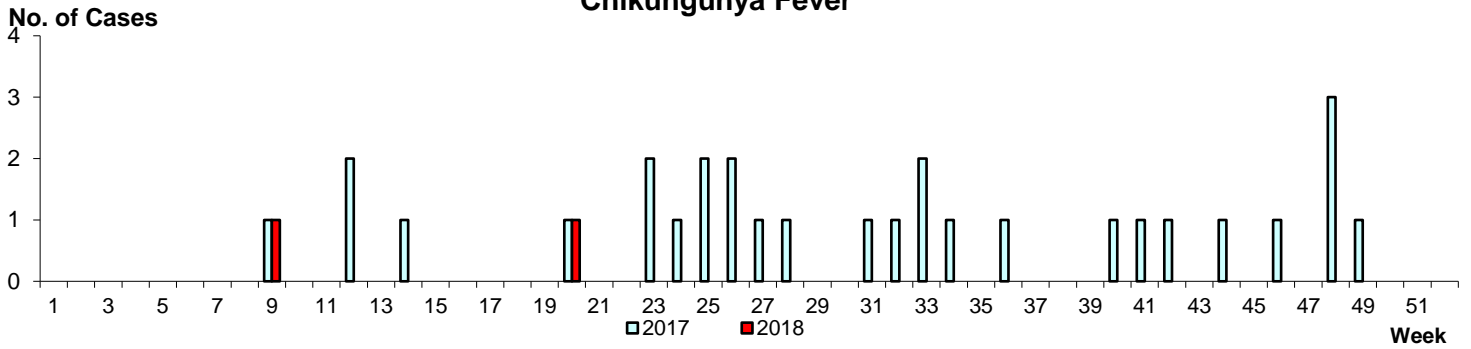


WEEKLY INCIDENCE OF VECTOR-BORNE DISEASES, 2017-2018

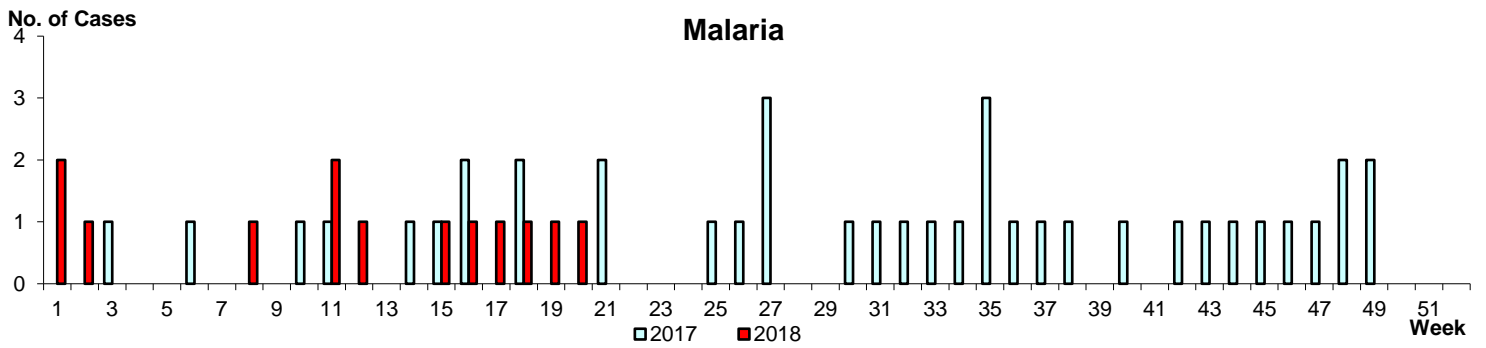
Dengue Fever/Dengue Haemorrhagic Fever



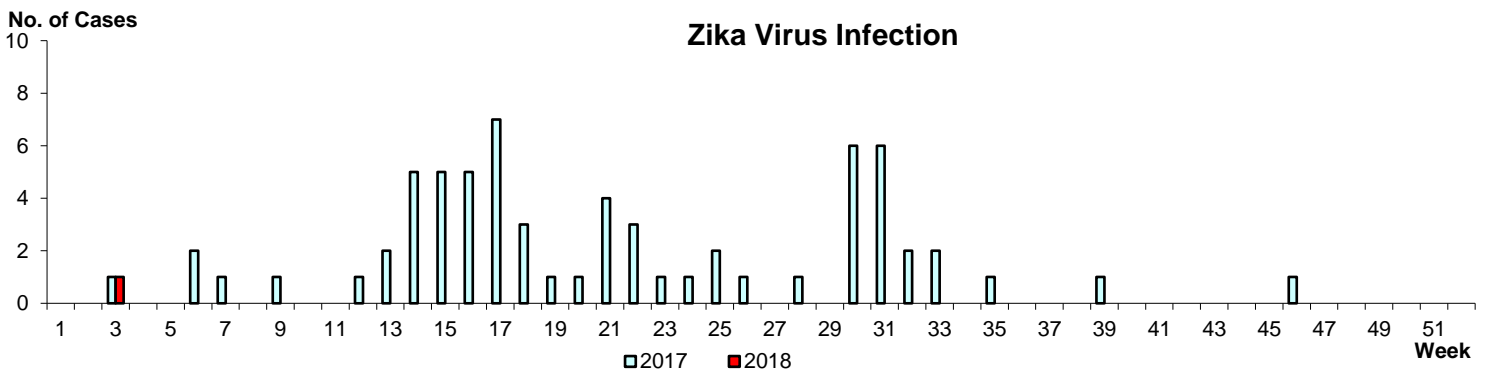
Chikungunya Fever



Malaria



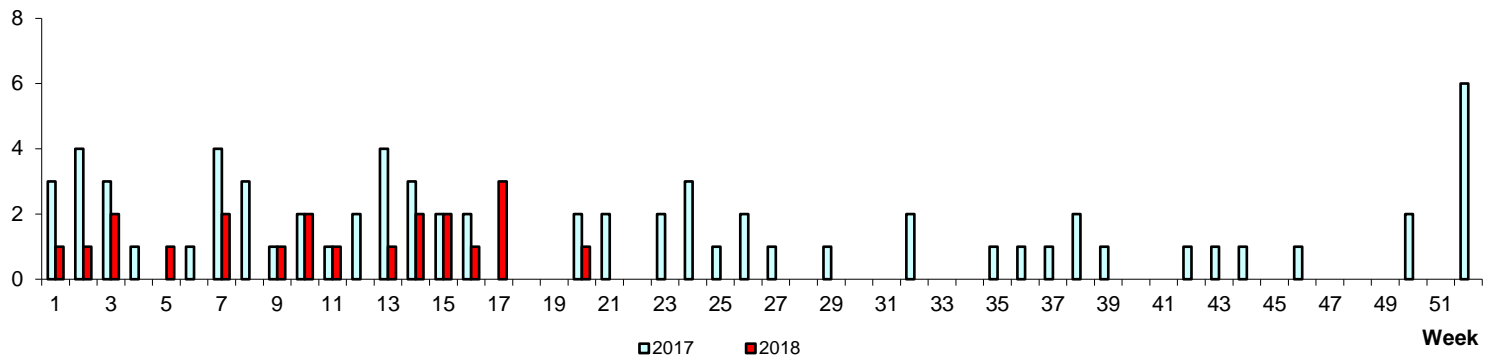
Zika Virus Infection



WEEKLY INCIDENCE OF AIR/DROPLET-BORNE DISEASES, 2017-2018

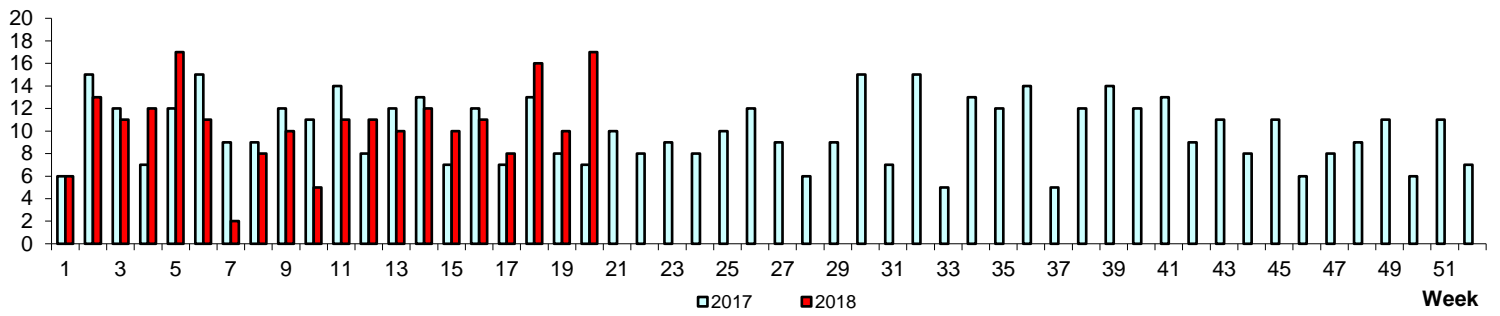
No. of Cases

Measles



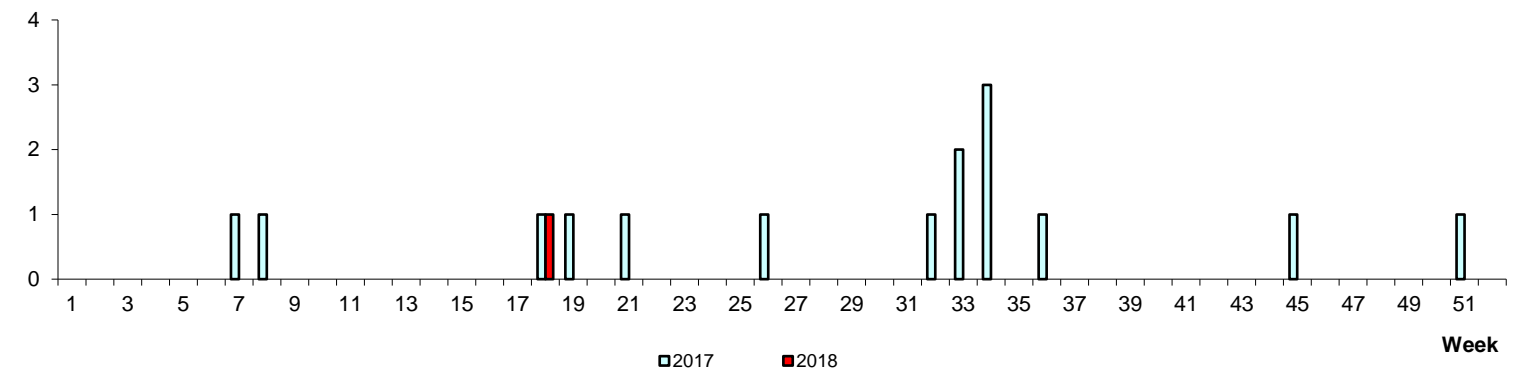
No. of Cases

Mumps



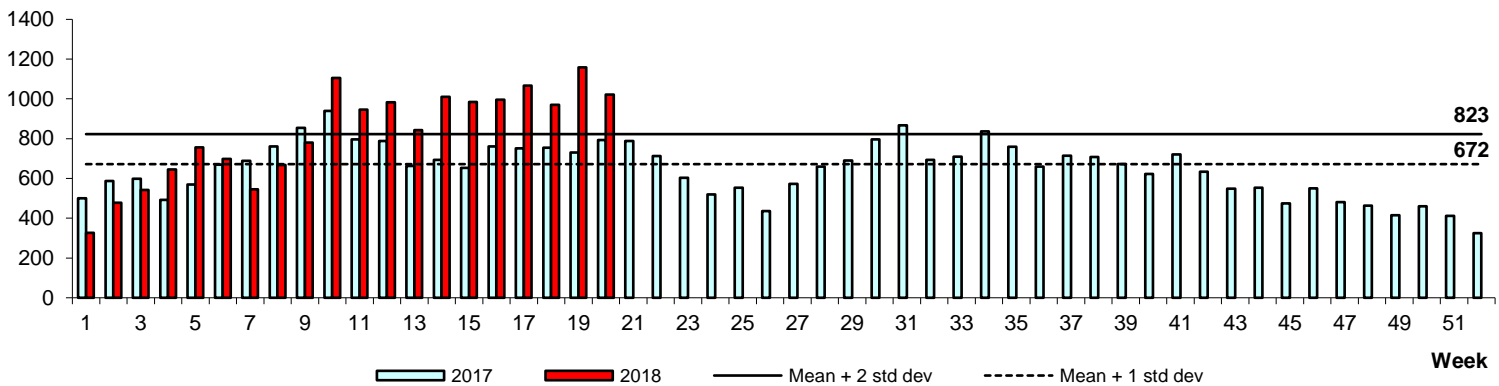
No. of Cases

Rubella



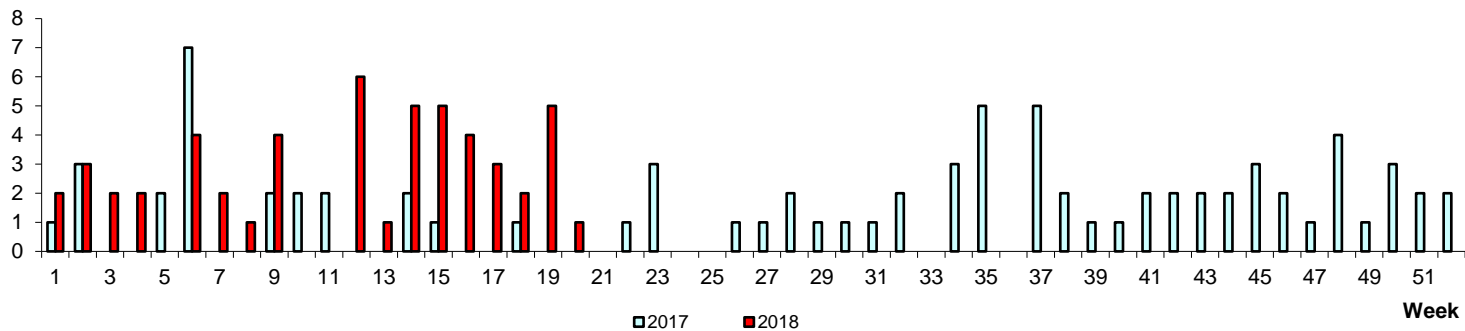
Hand, Foot & Mouth Disease

No. of Cases



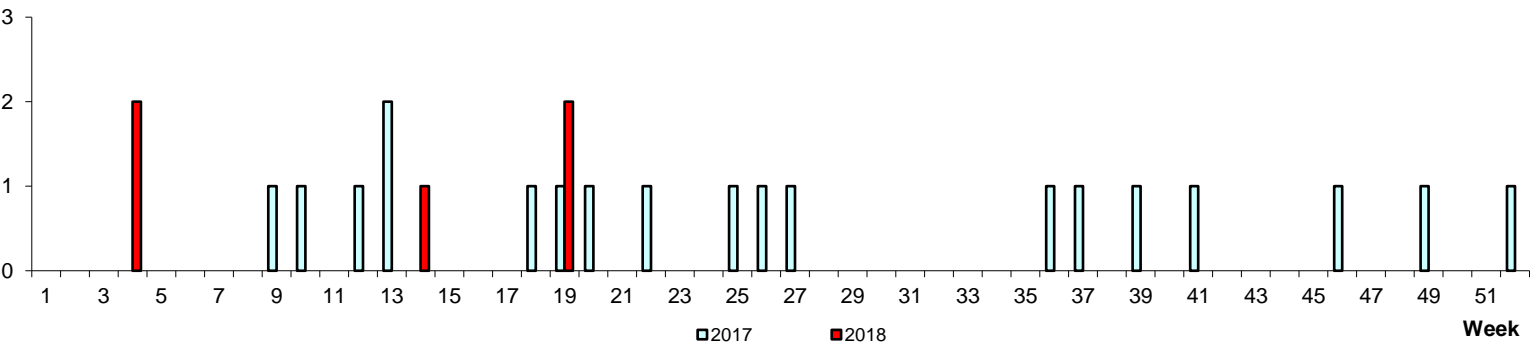
No. of Cases

Pertussis



No. of Cases

Legionellosis



POLYCLINIC ATTENDANCES, 2017-2018

