



WEEKLY INFECTIOUS DISEASE BULLETIN
EPIDEMIOLOGICAL WEEK 24 10 - 16 Jun 2018

	E Week 24			Cumulative first 24 Weeks		
	2018*	2017	Median 2013 -2017	2018	2017	Median 2013 -2017
FOOD/WATER-BORNE DISEASES						
Acute Hepatitis A	3	1	1	34	43	41
Acute Hepatitis E	0	0	2	29	24	26
Campylobacteriosis	10	4	5	181	180	196
Cholera	0	0	0	1	1	0
Paratyphoid	0	0	0	7	9	14
Poliomyelitis	0	0	0	0	0	0
Salmonellosis	31	49	38	745	979	881
Typhoid	1	2	2	15	34	34
VECTOR-BORNE DISEASES						
Chikungunya Fever	0	1	1	4	8	16
Dengue Fever	55	78	207	1231	1277	7426
Dengue Haemorrhagic Fever	0	1	1	11	9	10
Japanese Encephalitis [^]	0	0	NA	0	0	NA
Leptospirosis [^]	0	1	NA	0	26	NA
Malaria	0	0	1	14	12	17
Murine Typhus [^]	0	0	NA	0	0	NA
Nipah virus infection	0	0	0	0	0	0
Plague	0	0	0	0	0	0
Yellow Fever	0	0	0	0	0	0
Zika Virus Infection	0	1	NA	1	44	NA
AIR/DROPLET-BORNE DISEASES						
Avian Influenza	0	0	NA	0	0	NA
Diphtheria	0	0	0	0	0	0
Ebola Virus Disease	0	0	NA	0	0	NA
<i>Haemophilus influenzae</i> type b	0	0	0	3	5	3
Hand, Foot And Mouth Disease	734	520	541	20069	16672	14778
Legionellosis	0	0	0	9	9	9
Measles	0	3	1	25	45	45
Melioidosis	1	0	0	15	24	22
Meningococcal Disease	0	0	0	4	5	2
Mumps	8	8	8	252	244	233
Pertussis	4	0	0	63	27	24
Pneumococcal Disease (invasive)	5	3	3	60	74	65
Rubella	0	0	0	1	5	9
Severe acute respiratory syndrome	0	0	0	0	0	0
Tetanus [^]	0	0	0	1	0	
OTHER DISEASES						
Acute hepatitis B	0	1	1	21	16	25
Acute hepatitis C	0	0	0	8	6	5
Botulism [^]	0	0	NA	1	0	NA
MERS-CoV						
Suspect cases tested	2	NA	NA	92	81	NA
Other patients tested	0	NA	NA	37	70	NA
POLYCLINIC ATTENDANCES - AVERAGE DAILY NUMBER						
Acute upper respiratory infections	2403	2476	2476			NA
Acute conjunctivitis	74	83	79			NA
Acute Diarrhoea	466	464	424			NA
Chickenpox	15	10	NA			NA
HIV/STI/TB NOTIFICATIONS						
	2018	April		Cumulative 2018		
HIV/AIDS		26		105		
Legally Notifiable STIs		921		3404		
Tuberculosis		136		536		

* Preliminary figures, subject to revision when more information is available.

[^] Added to the list of notifiable diseases as of 28 Sep 2016.

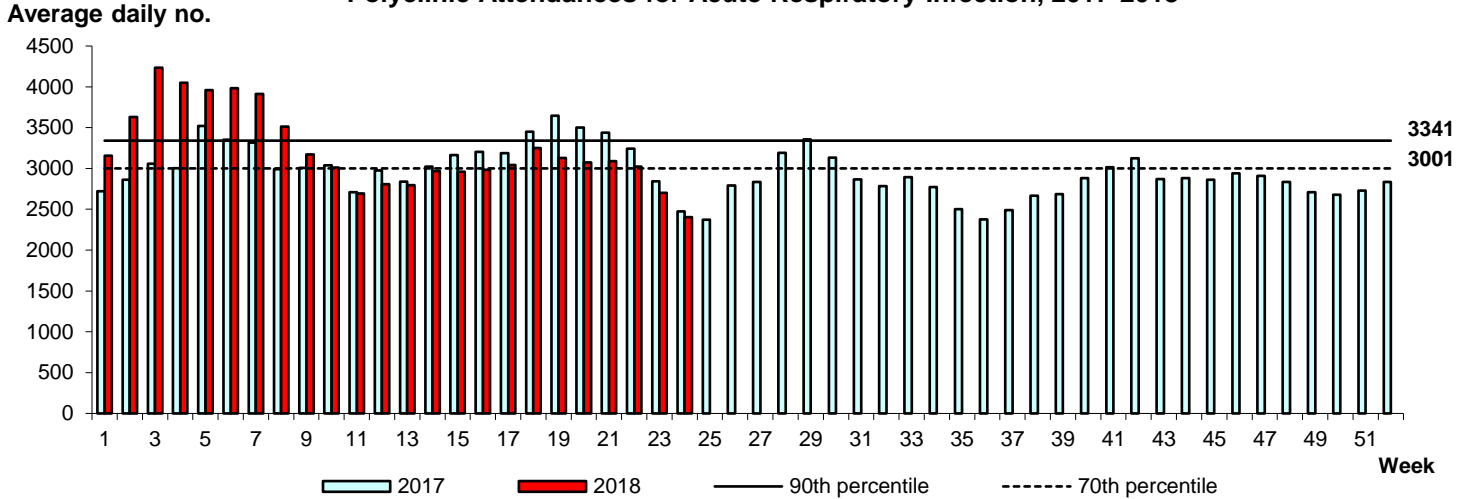
Updated case counts due to change in case definitions w.e.f. 1 Jan 2018

Influenza Situation in Singapore 2018

Influenza indicators for E-week 24 (10 Jun - 16 Jun 2018) are as follows:

The average daily number of patients seeking treatment in the polyclinics for ARI decreased from 2,701 (over 5.5 working days) in E-week 23 to 2,403 (over 4.5 working days) in E-week 24.

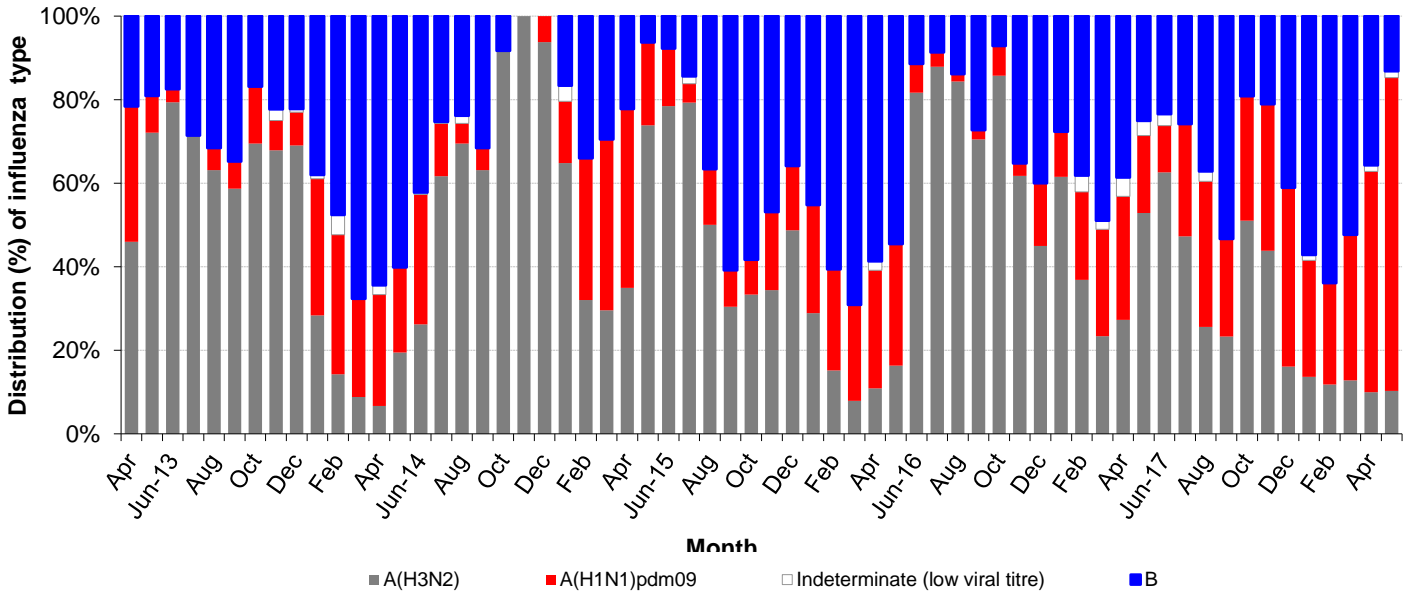
Polyclinic Attendances for Acute Respiratory Infection, 2017-2018



The proportion of patients with influenza-like illness (ILI) among the polyclinic attendances for ARI is 1.9%.

The overall positivity rate for influenza among ILI samples (n=205) in the community was 24.4% in the past 4 weeks. Of the specimens tested positive for influenza in May 2018, these were positive for influenza A(H1N1)pdm09 (78.5%), influenza B (13.8%) and influenza A(H3N2) (6.2%). 1.5% of the influenza A specimens were untypable due to low viral titre.

Monthly Influenza Surveillance

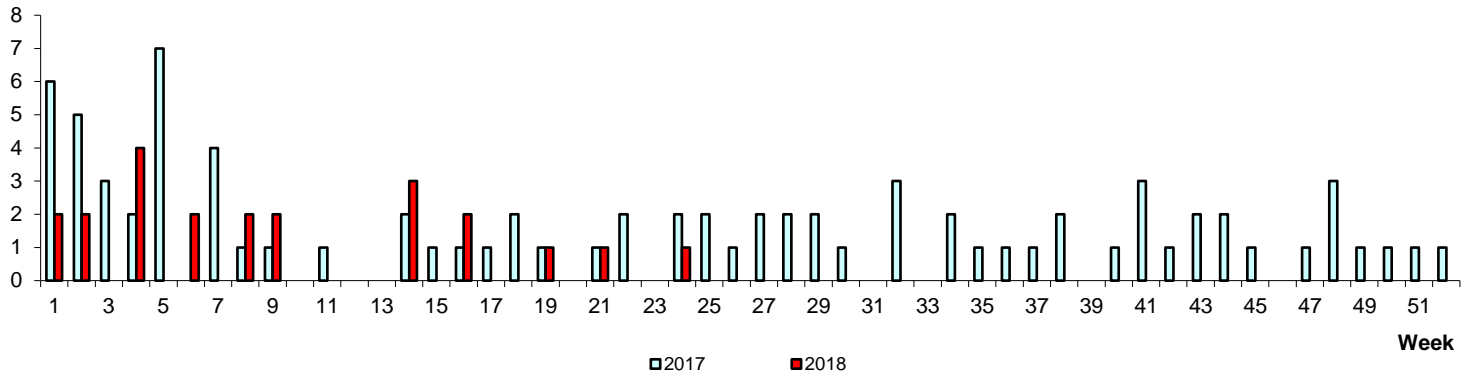


Based on influenza-like illness (ILI) samples from GPs and polyclinics

WEEKLY INCIDENCE OF FOOD/WATER-BORNE DISEASES, 2017-2018

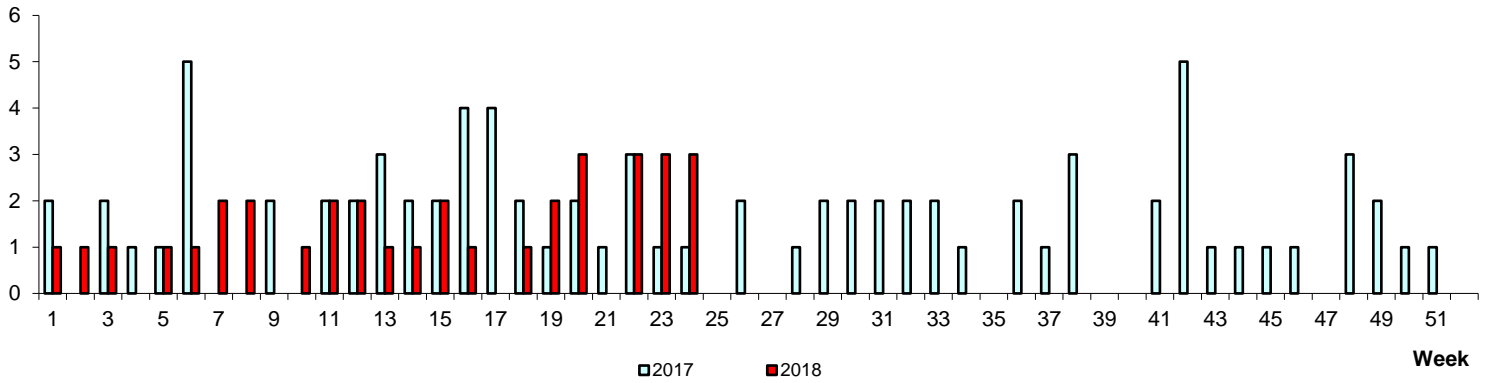
No. of Cases

Paratyphoid/Typhoid



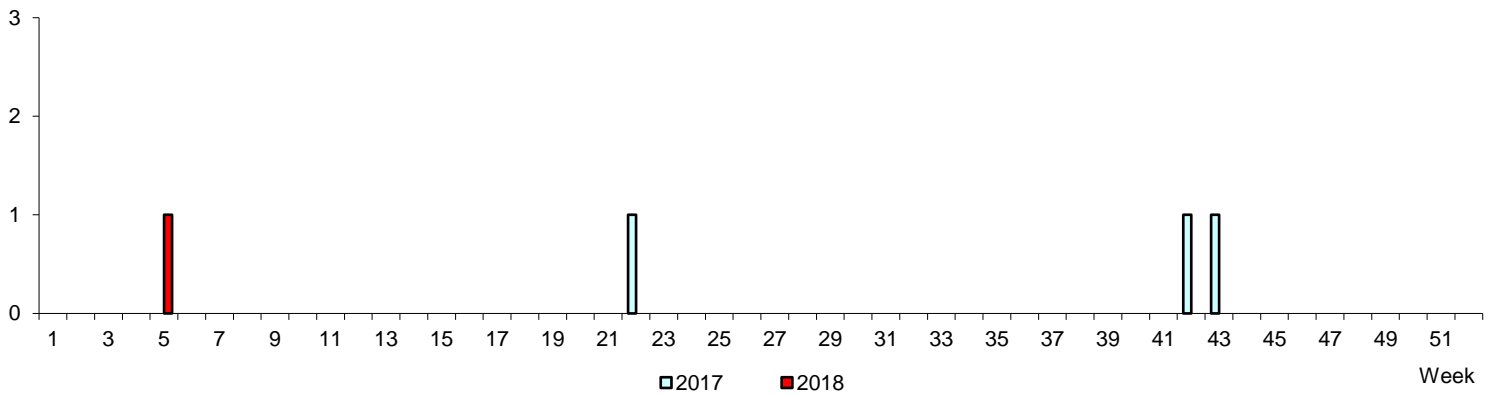
No. of Cases

Acute Hepatitis A



No. of Cases

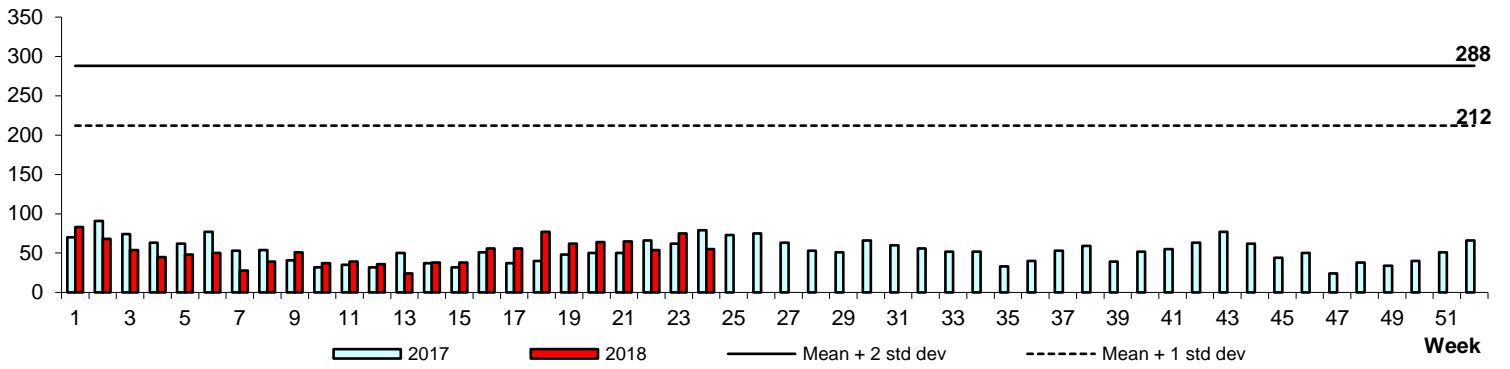
Cholera



WEEKLY INCIDENCE OF VECTOR-BORNE DISEASES, 2017-2018

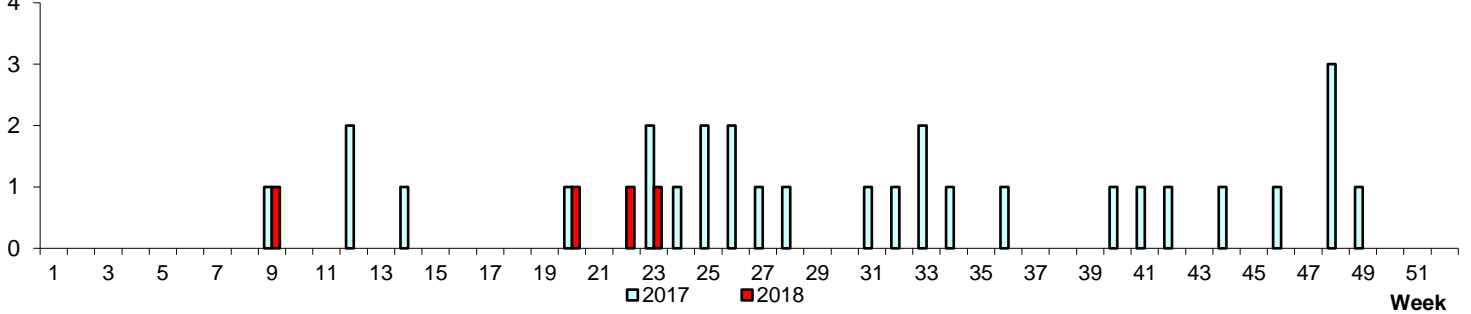
Dengue Fever/Dengue Haemorrhagic Fever

No. of Cases



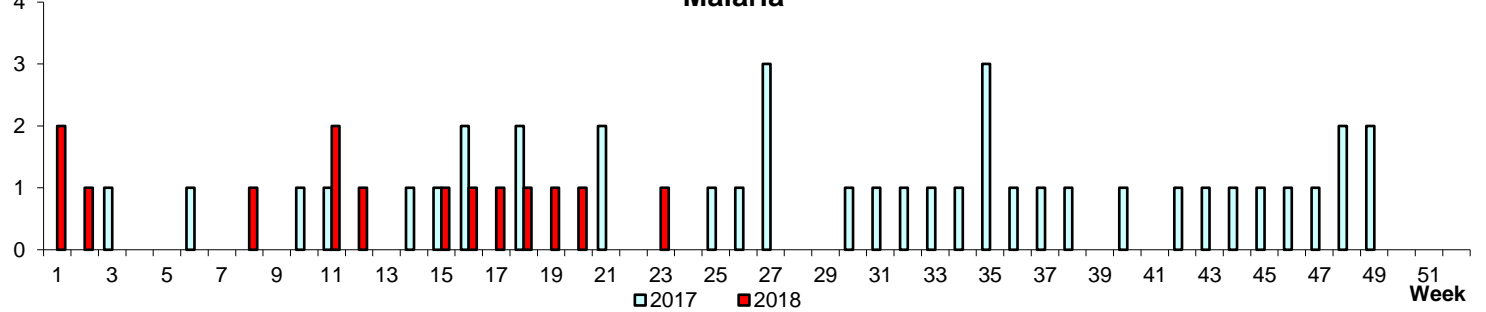
Chikungunya Fever

No. of Cases



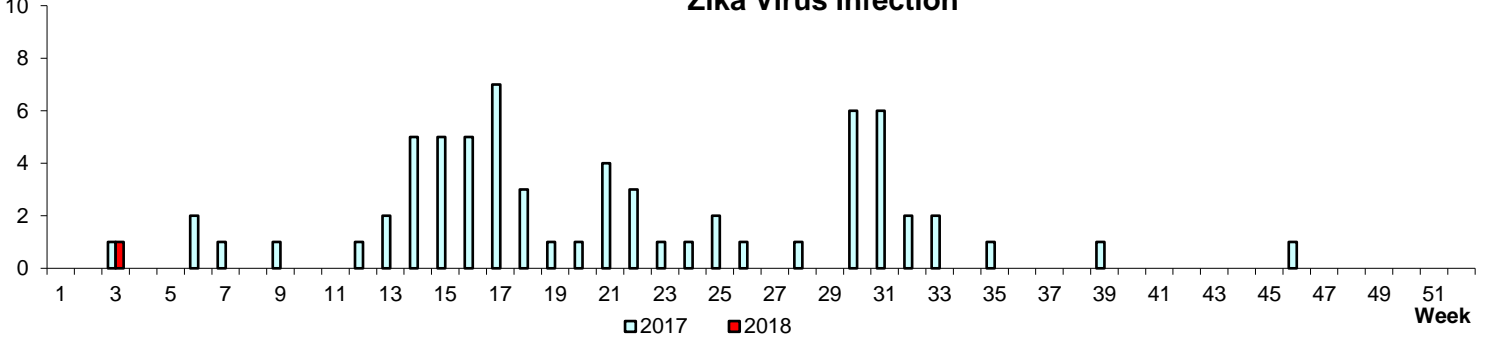
Malaria

No. of Cases



Zika Virus Infection

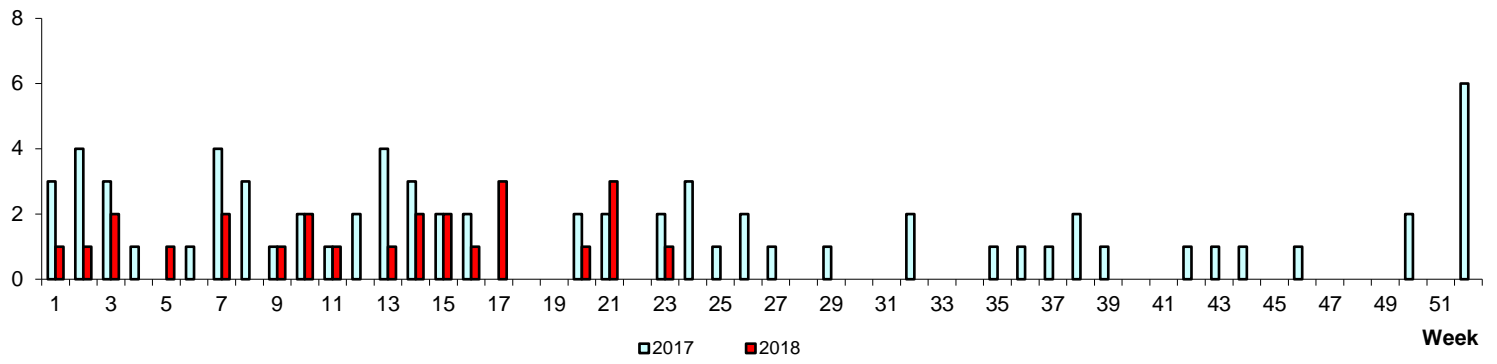
No. of Cases



WEEKLY INCIDENCE OF AIR/DROPLET-BORNE DISEASES, 2017-2018

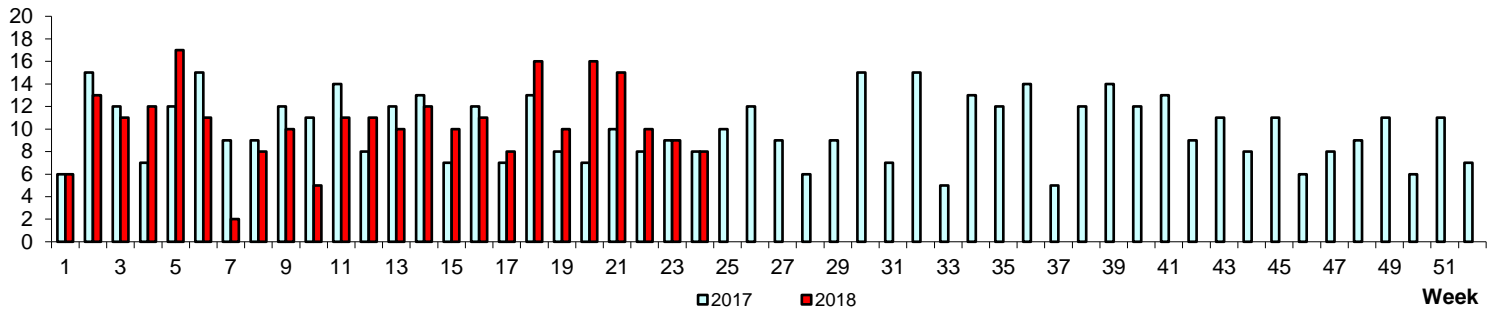
No. of Cases

Measles



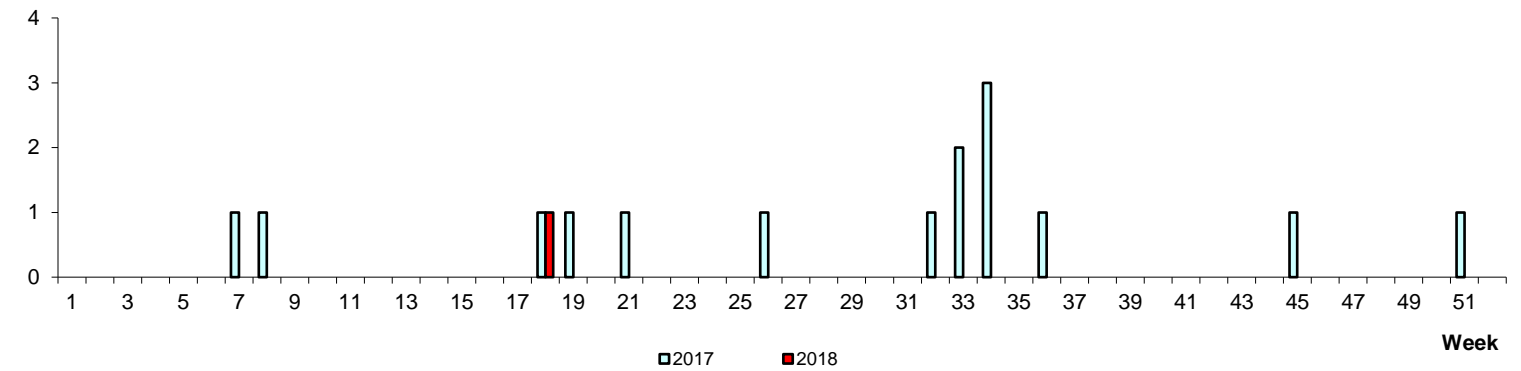
No. of Cases

Mumps



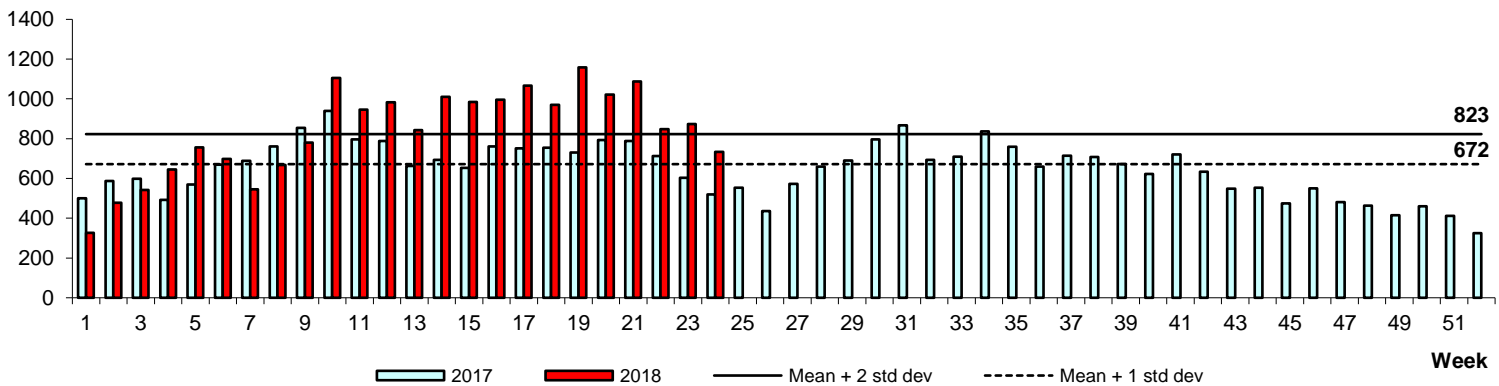
No. of Cases

Rubella



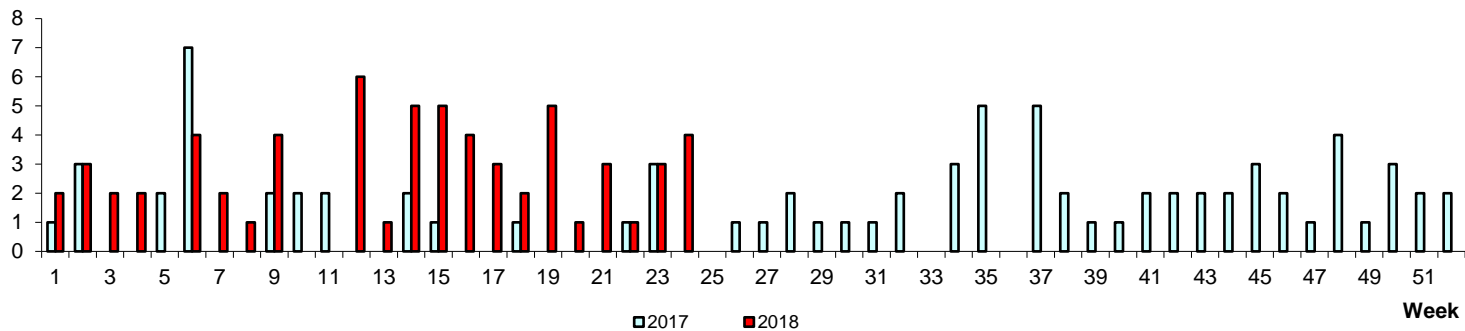
Hand, Foot & Mouth Disease

No. of Cases



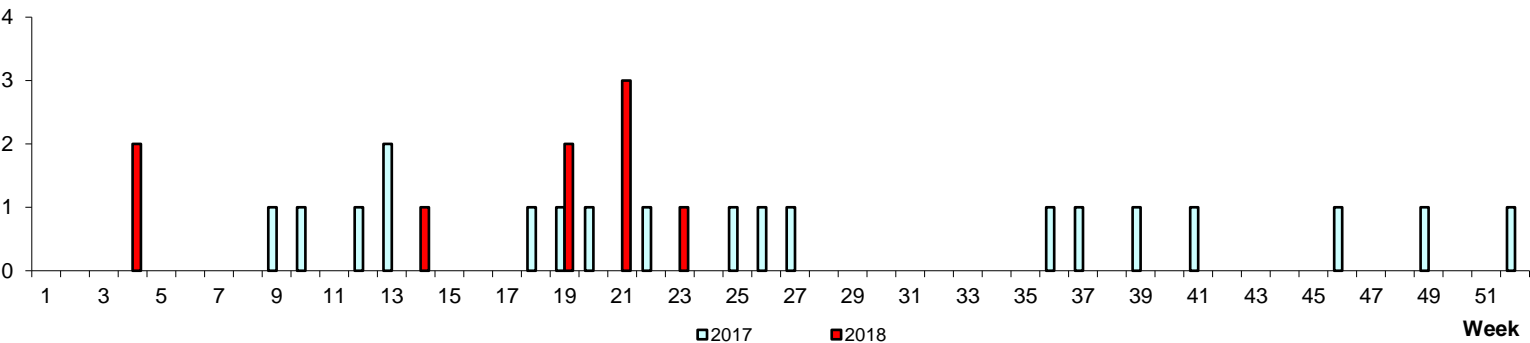
No. of Cases

Pertussis



No. of Cases

Legionellosis



POLYCLINIC ATTENDANCES, 2017-2018

